

**DEPARTMENT OF NATURAL RESOURCES  
AND CONSERVATION**

**Southwestern Land Office - Missoula Unit**

STEVE BULLOCK, GOVERNOR



**STATE OF MONTANA**

PHONE: (406) 542-4201  
FAX: (406) 542-5807

3206 MAVERICK LANE  
MISSOULA, MT 59804

**INITIAL PROPOSAL  
BLACKFOOT BOAT LAUNCH IMPROVEMENT  
APRIL 24, 2017**

The Montana Department of Natural Resources and Conservation, Missoula Unit is proposing to conduct activities to address water quality concerns that have arisen due to the public's use of an unofficial boat launch site on the Blackfoot River on DNRC lands in:

**Section 1 T13N R17W**

This site, approximately 10.75 miles east of Bonner, Montana was acquired by the DNRC in 2010 as part of the Montana Legacy Project. Prior to that date, the land was owned by Plum Creek Timber Co. While the exact date and method of the construction of the parking area and river access ramp/trail at this location are unknown, they have been in use since at least the 1980's. At the present time, both the river access ramp/trail and the puddles which form in the parking lot are directly contributing sediment to the Blackfoot River and impacting water quality. The DNRC is proposing to grade and gravel the parking area and reduce and armor the slope of the river access ramp/trail to address these issues. Also being considered is the installation of a gate/barrier which would eliminate trailer access to the river either during periods of low water or year-round. In addition, to address forest health issues and help defray the cost of the improvements to the boat launch site, the DNRC is also proposing to remove approximately 20-40 thousand board feet of timber from the forested area immediately downstream of the boat launch. Harvest activities would be low impact and limited to diseased, suppressed and genetically inferior trees. These activities would occur in late autumn during periods of low river flow.

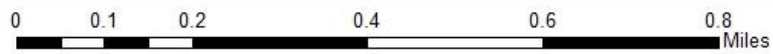
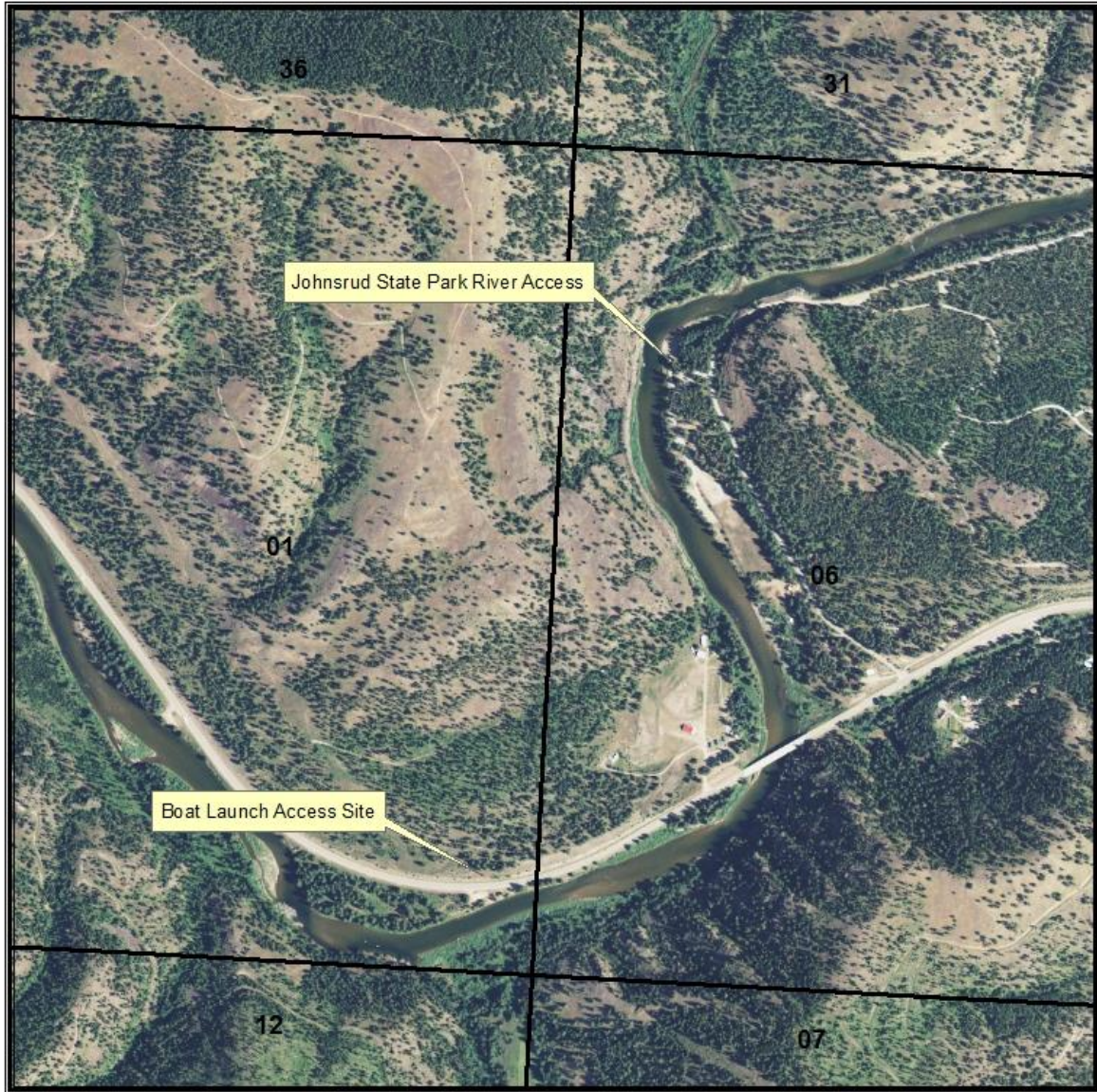
The DNRC is in the scoping phase of the project's environmental assessment. In preparation for this project, specialists such as wildlife biologists, hydrologists, soil scientists and archaeologists will be consulted.

The Montana DNRC invites written comments and suggestions concerning this proposal. Please respond by May 24, 2017 to:

Jonathan Hansen  
Department of Natural Resources and Conservation  
Missoula Unit  
3206 Maverick Ln.  
Missoula, MT 59804



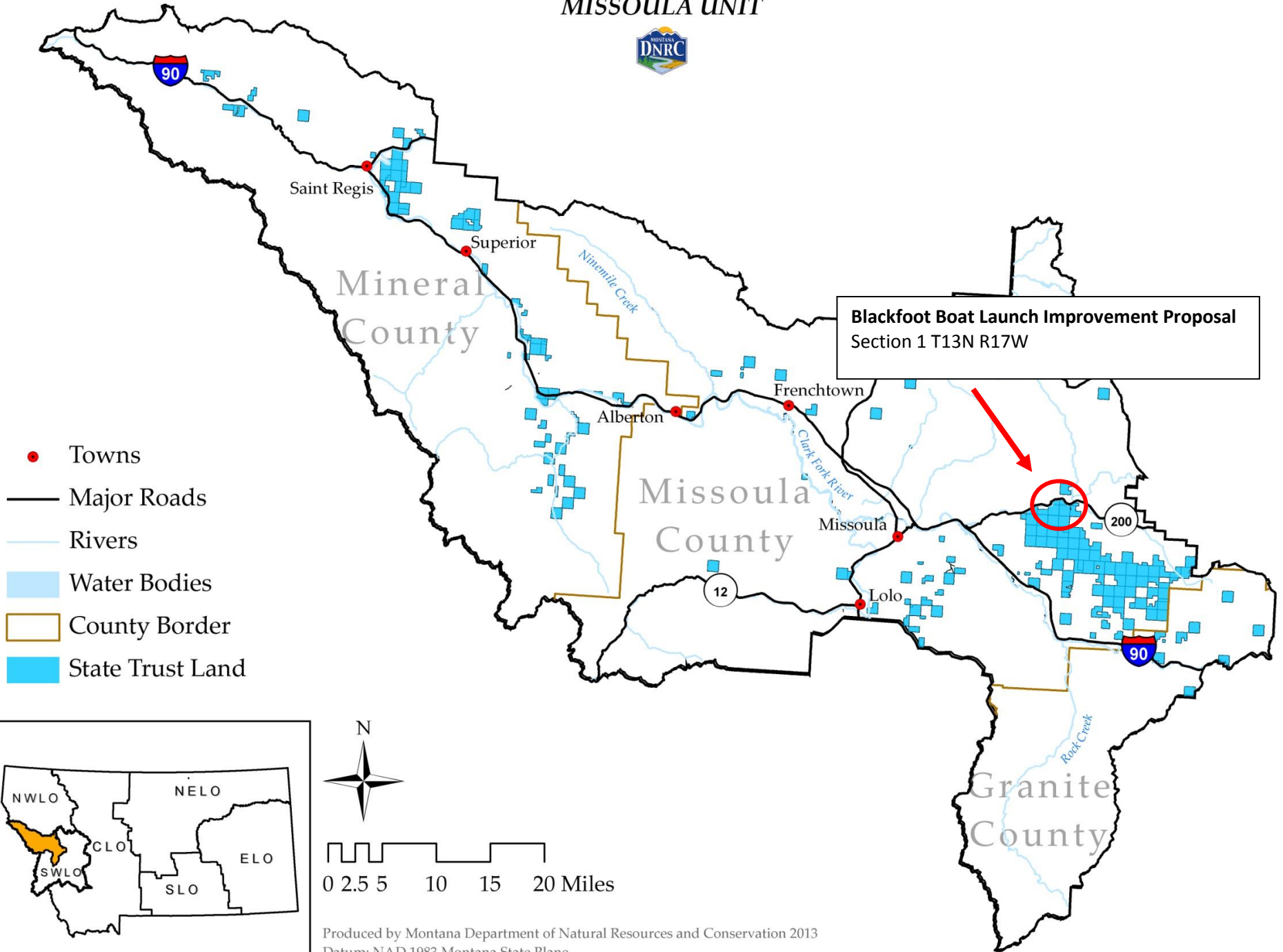
**Blackfoot Boat Launch Improvement Site**  
3/4 mile downstream of Johnsrud Park River Access  
Section 1 T13N R17W  
Missoula Unit



A. Helena  
4/24/2017

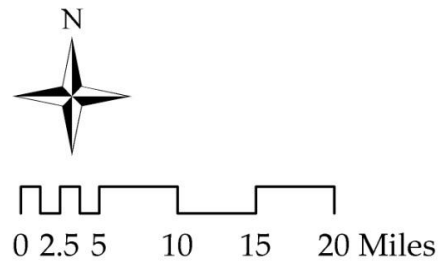
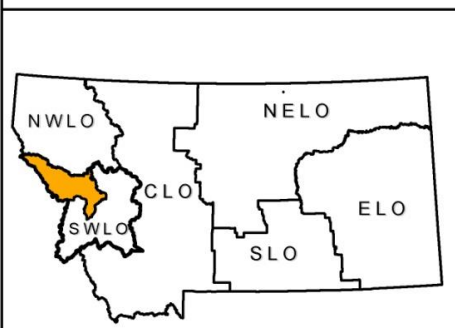
# Blackfoot Boat Launch Improvement Proposal Vicinity Map

## MISSOULA UNIT



**Blackfoot Boat Launch Improvement Proposal**  
Section 1 T13N R17W

- Towns
- Major Roads
- Rivers
- Water Bodies
- County Border
- State Trust Land



Produced by Montana Department of Natural Resources and Conservation 2013  
Datum: NAD 1983 Montana State Plane