

**DEPARTMENT OF NATURAL RESOURCES
AND CONSERVATION**

Northwestern Land Office - Kalispell Unit

STEVE BULLOCK, GOVERNOR



STATE OF MONTANA

PHONE: (406) 751-2241
FAX: (406) 751-2286

655 TIMBERWOLF PKWY, SUITE 2
KALISPELL, MT 59901

**Initial Proposal
Glacier Nordic Club Trail Project
June 22, 2017**

The Department of Natural Resources and Conservation (DNRC), Kalispell Unit, is proposing to approve approximately 1.5 miles of groomed cross-country ski trails to the ski course operated by the Glacier Nordic Club (GNC) on the following state owned parcel:

Section 16, T31N, R21W

The Glacier Nordic Club Trail Project is located approximately 3 miles northeast of Whitefish, MT.

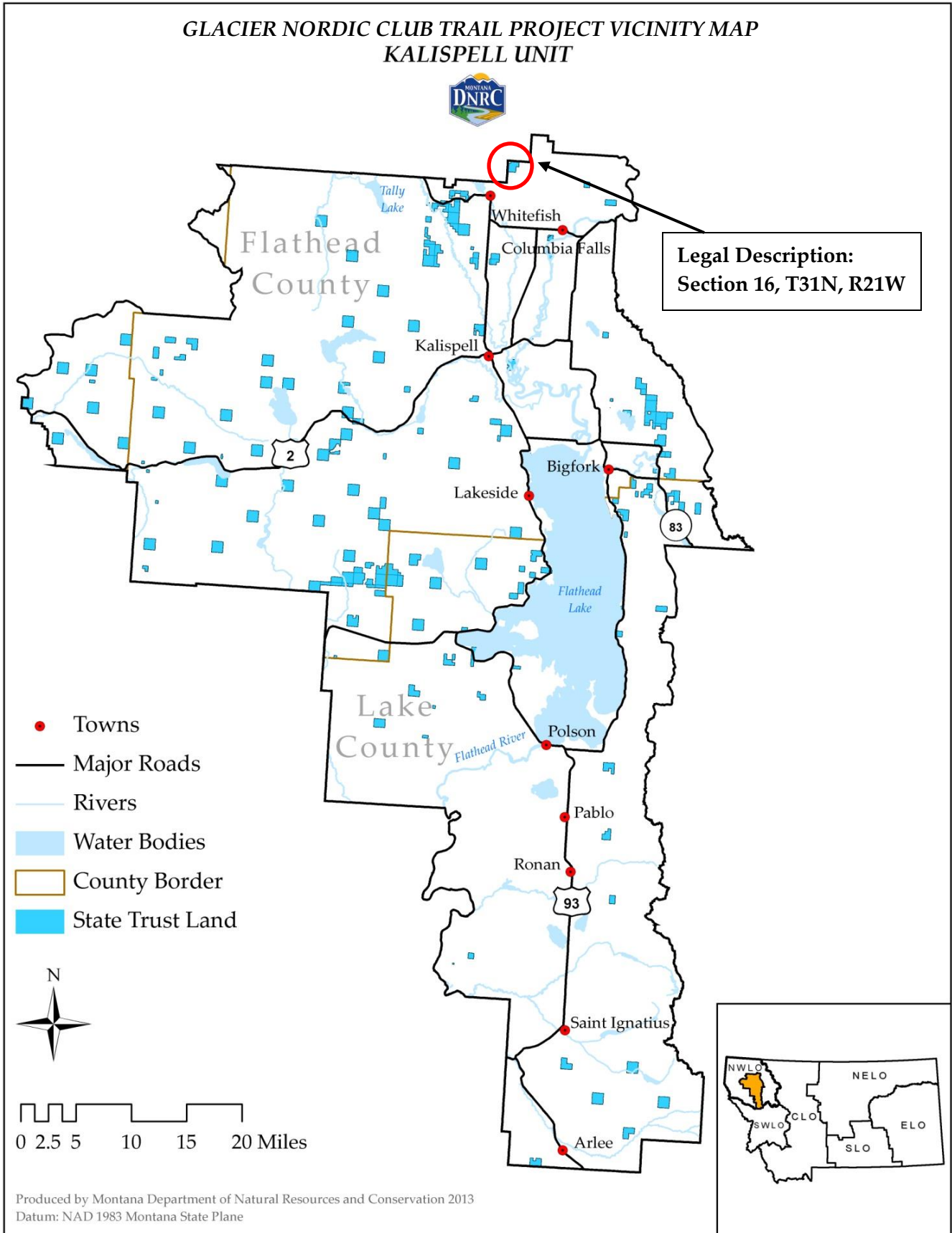
All trails would be located on existing logging roads. GNC is proposing to groom the trails from December 1st through March 31st.

DNRC is in the scoping phase of this project. All distances are preliminary estimates. In preparation for this project, specialists such as wildlife biologists, hydrologists, soil scientists, and archaeologists will be consulted.

The Montana DNRC invites written comments and suggestions concerning this proposal. Please respond by **July 15th, 2017** to:

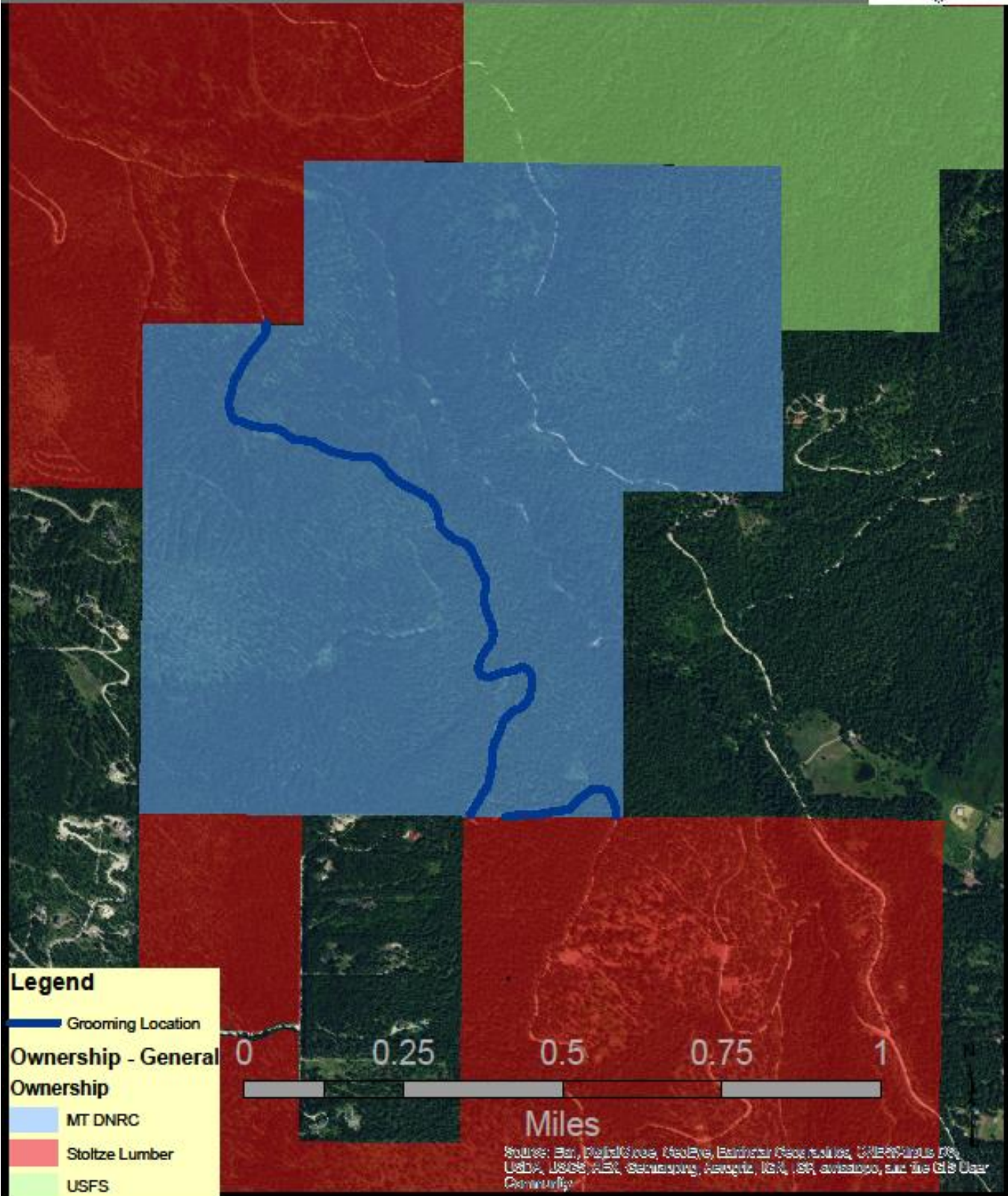
Department of Natural Resources and Conservation
Attn: Nathan Cole
Kalispell Unit
655 Timberwolf Parkway, Kalispell MT 59901
ncole@mt.gov

A-1: Vicinity Map



Proposed Groomed Nordic Trails.

N.C. 6/17



Legend

- Grooming Location
- Ownership - General Ownership**
- MT DNRC
- Stoltze Lumber
- USFS



Source: Esri, DigitalGlobe, GeoEye, Earthstar Geographics, CNES/Airbus DS, USDA, USGS, AeroGRID, IGN, SIA, Swisstopo, and the GIS User Community