

DEPARTMENT OF NATURAL RESOURCES AND CONSERVATION



GREG GIANFORTE, GOVERNOR

1539 ELEVENTH AVENUE

STATE OF MONTANA

DIRECTOR'S OFFICE: (406) 444-2074
FAX: (406) 444-2684

PO BOX 201601
HELENA, MONTANA 59620-1601

Initial Proposal Wolfagator Limited Access Timber Sale 8/16/2022

The Montana Department of Natural Resources and Conservation (DNRC), Lewistown Unit is proposing to harvest timber on the following state owned parcel:

Section 36 Township 15N Range 20E

The Wolfagator LA Timber Sale is located approximately 15 miles southeast of Lewistown, Montana.

The primary objectives of this project are:

- Generation of revenue for the Common Schools Trust
- Improve stand health and vigor by removing overly mature and dead trees
- Create opportunity for natural regeneration

An estimated 1.5 million board feet (MMBF) would be harvested from approximately 160 acres. A seed tree harvest prescription would be used to accomplish forest management activities. The proposed harvest would contribute to the DNRC's sustained yield as mandated by state statute 77-5-222.

B&M Trucking INC. is approved sole access to the state section through the Smith property. The State of Montana allows for the department to negotiate fair market value for Limited Access timber sale not to exceed 2 million board feet.

Approximately 0.25 miles of permanent road will be constructed on state land, along with minor road resurfacing on existing roads where applicable.

The DNRC is in the scoping phase of the project environmental assessment, so all volumes, acreages and road distances are preliminary estimates. In preparation for this project, specialists such as wildlife biologists, hydrologists, soil scientists, and archeologists will be consulted.

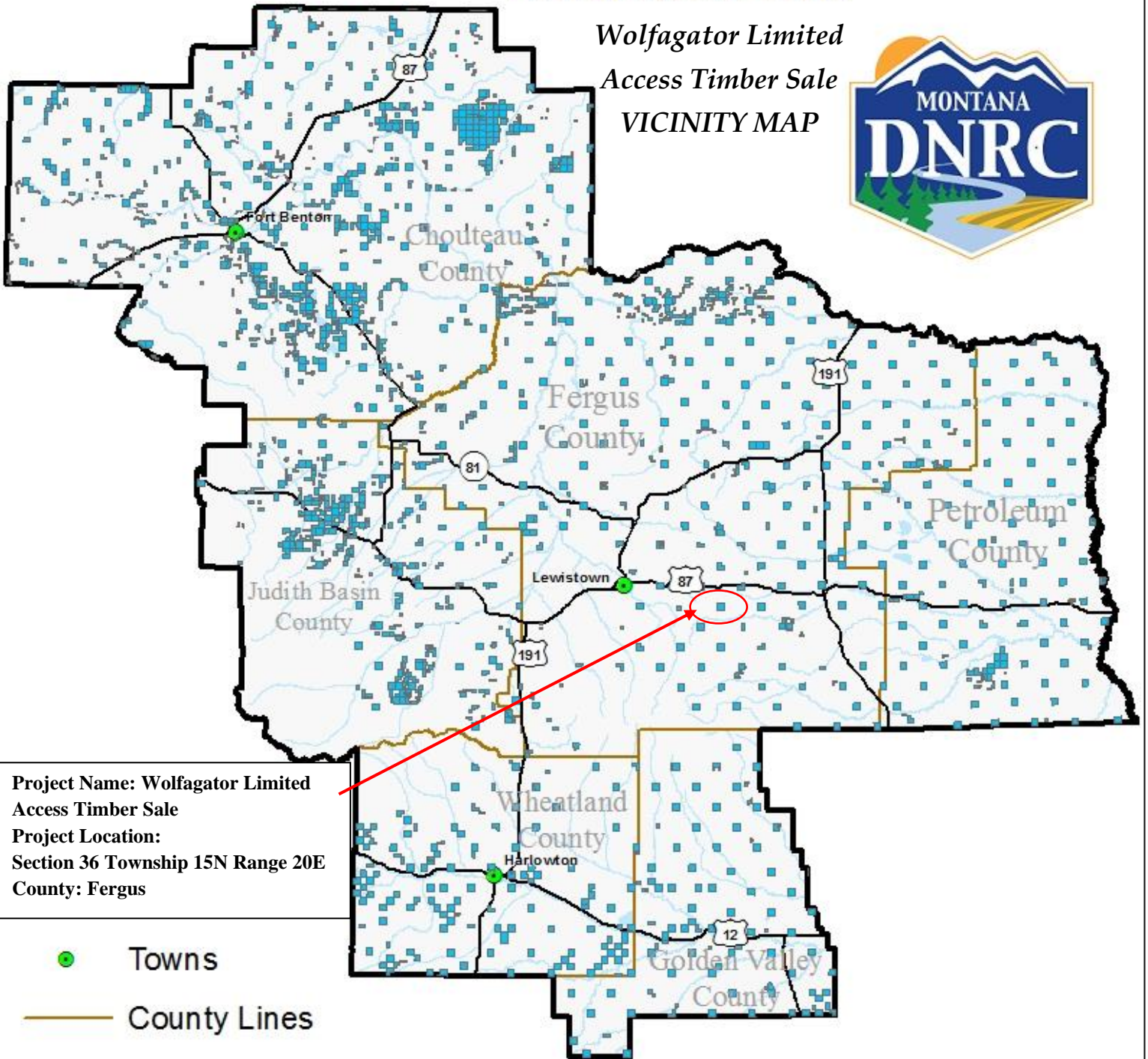
The Montana DNRC invites written comments and suggestions concerning this proposal. Please respond by **September 1st, 2022** to:

Department of Natural Resources and Conservation
Attn: **Josh Stoychoff**
Lewistown Unit
613 Northeast Main Street
Lewistown, MT 59457
jstoychoff@mt.gov
406-535-1903

State Trust Land Vicinity Map

Lewistown Unit

Wolfagator Limited
Access Timber Sale
VICINITY MAP



Project Name: Wolfagator Limited
Access Timber Sale
Project Location:
Section 36 Township 15N Range 20E
County: Fergus

- Towns
- County Lines
- Major Roads
- Rivers
- State Trust Land
- Water Bodies

