

DEPARTMENT OF NATURAL RESOURCES
AND CONSERVATION



GREG GIANFORTE, GOVERNOR

1539 ELEVENTH AVENUE

STATE OF MONTANA

DIRECTOR'S OFFICE: (406) 444-2074
FAX: (406) 444-2684

PO BOX 201601
HELENA, MONTANA 59620-1601

Initial Proposal
Ronan Creek Fire Salvage
August 16, 2022

The Montana Department of Natural Resources and Conservation (DNRC), Kalispell Unit is proposing to harvest timber on the following state owned parcels:

Section 26, T25N, R22W
Section 16, T24N, R22W

The Ronan Creek Fire Salvage is in the initial stages of planning. These lands were burned in the Elmo 2 Fire and are located approximately 6 miles west of Elmo, Montana.

Approximately 1,280 acres of State land burned in the fire. Timber land in section 16 is located on steeper side slopes with very limited road access. A field evaluation will have to determine if this parcel can be economically salvaged. State lands in section 26 were recently harvested. Initial field reconnaissance indicates there is a high percent of mortality in the leave trees.

Based on initial estimates, approximately 2 to 3 million board feet of timber would be harvested. Sale activity would most likely start this fall and finish by the end of December 2023, in an effort to minimize the loss of value in the burnt timber. The proposed harvest would contribute to the DNRC's sustained yield as mandated by state statute 77-5-222 and generate revenue for Trust beneficiaries by salvaging burned timber before it loses economic value as directed in MCA 77-5-207.

The DNRC is in the scoping phase of the project environmental assessment, so all volumes, acreages and road distances are preliminary estimates. In preparation for this project, specialists such as wildlife biologists, hydrologists, soil scientists, and archeologists will be consulted.

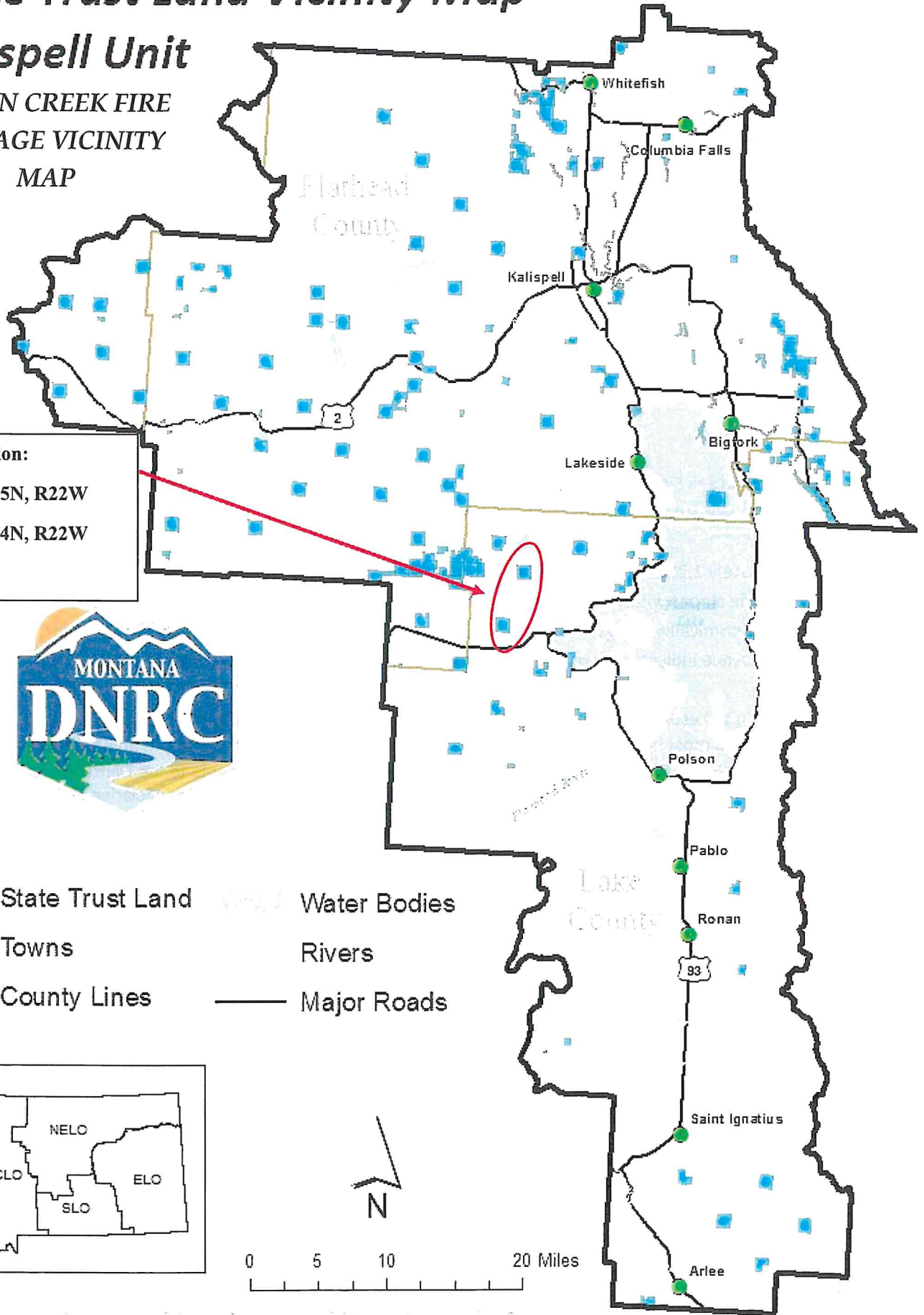
The Montana DNRC invites written comments and suggestions concerning this proposal. Please respond by September 15, 2022, to:

Department of Natural Resources and Conservation
Attn: Pete Seigmund
Kalispell Unit
655 Timberwolf Parkway, Kalispell MT 59901
pseigmund@mt.gov
406 751-2266

State Trust Land Vicinity Map

Kalispell Unit

RONAN CREEK FIRE
SALVAGE VICINITY
MAP



Project Location:
Section 26, T25N, R22W
Section 16, T24N, R22W
County: Lake



- State Trust Land
- Towns
- County Lines
- Water Bodies
- Rivers
- Major Roads

