

# DEPARTMENT OF NATURAL RESOURCES AND CONSERVATION



GREG GIANFORTE, GOVERNOR

1539 ELEVENTH AVENUE

## STATE OF MONTANA

DIRECTOR'S OFFICE: (406) 444-2074  
FAX: (406) 444-2684

PO BOX 201601  
HELENA, MONTANA 59620-1601

### **Initial Proposal Brown's Ranch Timber Sale August 8, 2022**

The Montana Department of Natural Resources and Conservation (DNRC), Kalispell Unit is proposing to harvest timber on the following state-owned parcels:

#### **Section 16, Township 25N, Range 23W & Section 36, Township 25N, Range 24W**

The Brown's Ranch Timber Sale is located approximately 13 miles south of Marion, Montana in Flathead County.

The primary objectives of the proposed project are:

- Promote a healthy, productive forest and return the area to more historic forest conditions
- Reduce fuel loading and increase the stand's fire resiliency
- Manage outbreaks of insects and disease in the stands
- Generate revenue for the Common School Trust

The prospected area would harvest approximately 2.5 million board feet within an estimated 700 acre project area. Harvest prescriptions could include, but are not limited to, commercial thinning and overstory removal. The proposed harvest would contribute to the DNRC's sustained yield as mandated by state statute 77-5-222.

Pre-existing road systems will need improvement and maintenance in areas to promote function, drainages, and ensure personnel safety. Approximately a mile of new road construction will be needed in section 36.

Noxious weed management, site preparation, rehabilitation and pile burning all may occur once harvesting has been completed.

The DNRC is in the scoping phase of the project environmental assessment, so all volumes, acreages and road distances are preliminary estimates. In preparation for this project, specialists such as wildlife biologists, hydrologists, soil scientists, and archeologists will be consulted.

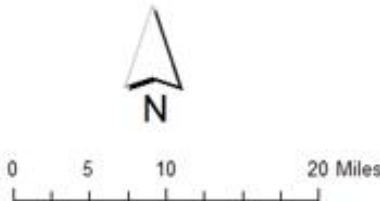
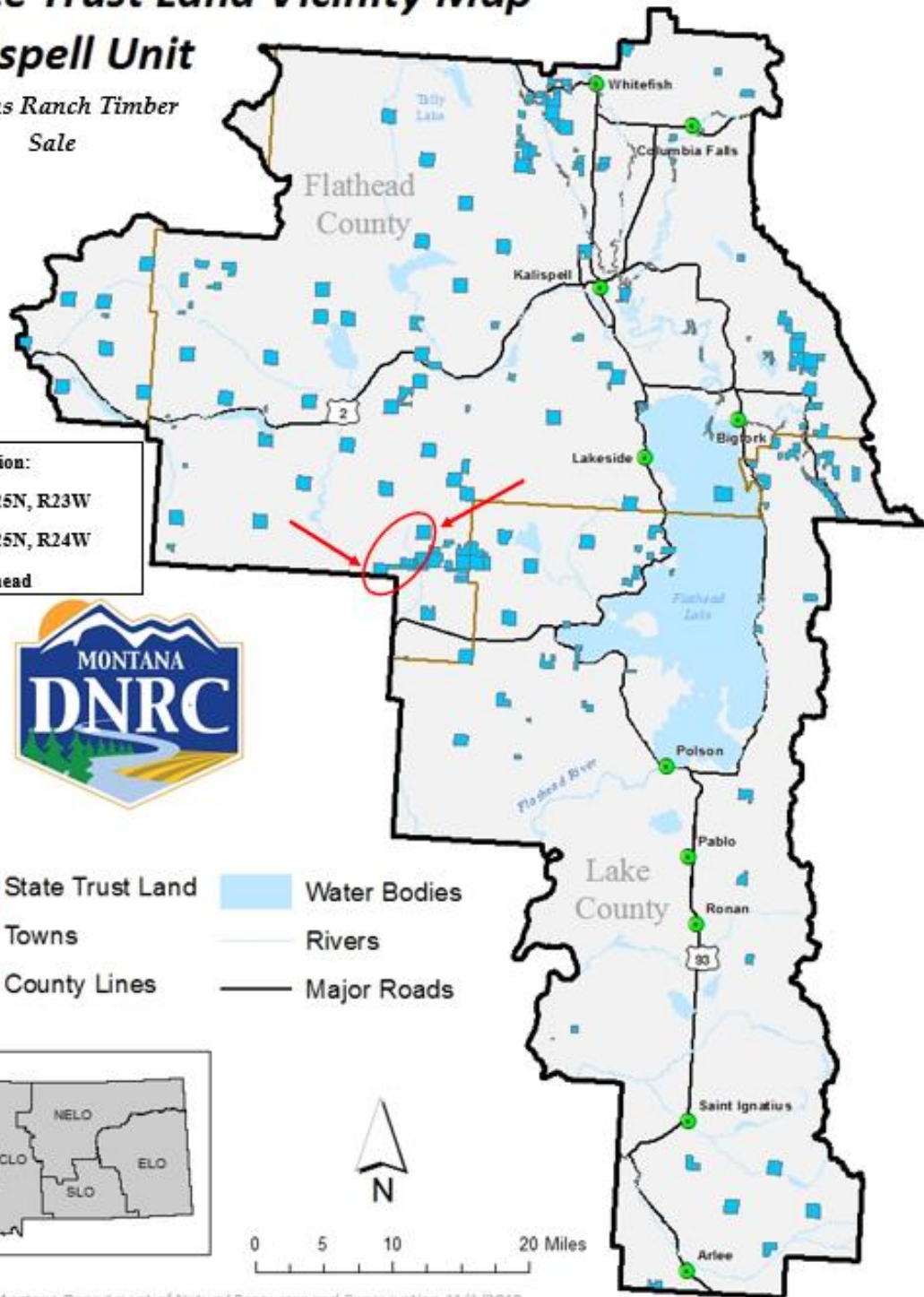
The Montana DNRC invites written comments and suggestions concerning this proposal. Please respond by September 9<sup>th</sup>, 2022, to:

Department of Natural Resources and Conservation  
Attn: Kayla Johnson  
Kalispell Unit  
655 Timberwolf Parkway, Kalispell MT 59901  
[Kayla.johnson@mt.gov](mailto:Kayla.johnson@mt.gov)  
(406) 751-2264

# State Trust Land Vicinity Map

## Kalispell Unit

Browns Ranch Timber Sale



Produced by Montana Department of Natural Resources and Conservation 11/1/2019  
Datum: NAD 1983 StatePlane