

DEPARTMENT OF NATURAL RESOURCES AND CONSERVATION



GREGGIANFORTE, GOVERNOR

1539 ELEVENTH AVENUE

STATE OF MONTANA

DIRECTOR'S OFFICE: (406) 444-2074
FAX: (406) 444-2684

PO BOX 201
HELENA, MONTANA 59601

Initial Proposal Klinger Timber Sale July 9, 2021

The Department of Natural Resources and Conservation, Libby Unit is proposing a timber harvest on approximately 640 acres on State Trust Land located in Sec.36, T29N, R31W within the Libby Creek drainage located approximately 8 miles south of Libby, MT. A brief description of the proposed action is listed below:

- 1) Sell approximately 5-6 million board feet of timber to generate revenue for the Common Schools trust, and to meet annual timber harvest levels mandated by State law.
- 2) Use silvicultural treatments to promote the development of historic stand conditions, emphasizing retention and/or regeneration of Ponderosa Pine, Western White Pine and Western Larch.
- 3) Manage these lands in a way that would remove diseased trees, reduce fuels, and the potential of a stand replacing fire, putting at risk the timber asset that currently exists, and capture the value of that asset before tree mortality erodes additional value.

Preliminary field observations indicate that approximately 640 acres would be harvested. Ground based logging systems would be utilized on approximately 500 acres, cable based logging systems would be utilized on the remainder of acres.

Proposed silvicultural harvest treatments would include seed tree, shelterwood, and seed tree removal. The proposed harvest would contribute to the DNRC's sustained yield as mandated by state statute 77-5-222. Pre-commercial thinning would also be considered if existing regeneration stands in the project area are found to be overstocked.

During the duration of the sale approximately 1.75 miles of new road would be constructed along with 7.6 miles of road maintenance and 0.2 miles of road reconstruction.

Follow-up treatments could include machine piling and scarification, slash burning, noxious weed spraying, hand planting tree seedlings and pre-commercial thinning. Road construction and harvest activities could begin during 2022.

The DNRC is in the scoping phase of the project environmental assessment so all volumes, acreages and road distances are preliminary estimates. In preparation for this project, specialists such as wildlife biologists, hydrologists, soil scientists and archeologists will be consulted.

The Montana DNRC invites written comments and suggestions concerning this proposal. Please respond by 5:00 PM on August 9th, 2021.

Department of Natural Resources and Conservation

Jess Paoli

Libby Unit

177 State Lands Office Road

Libby, MT 59923

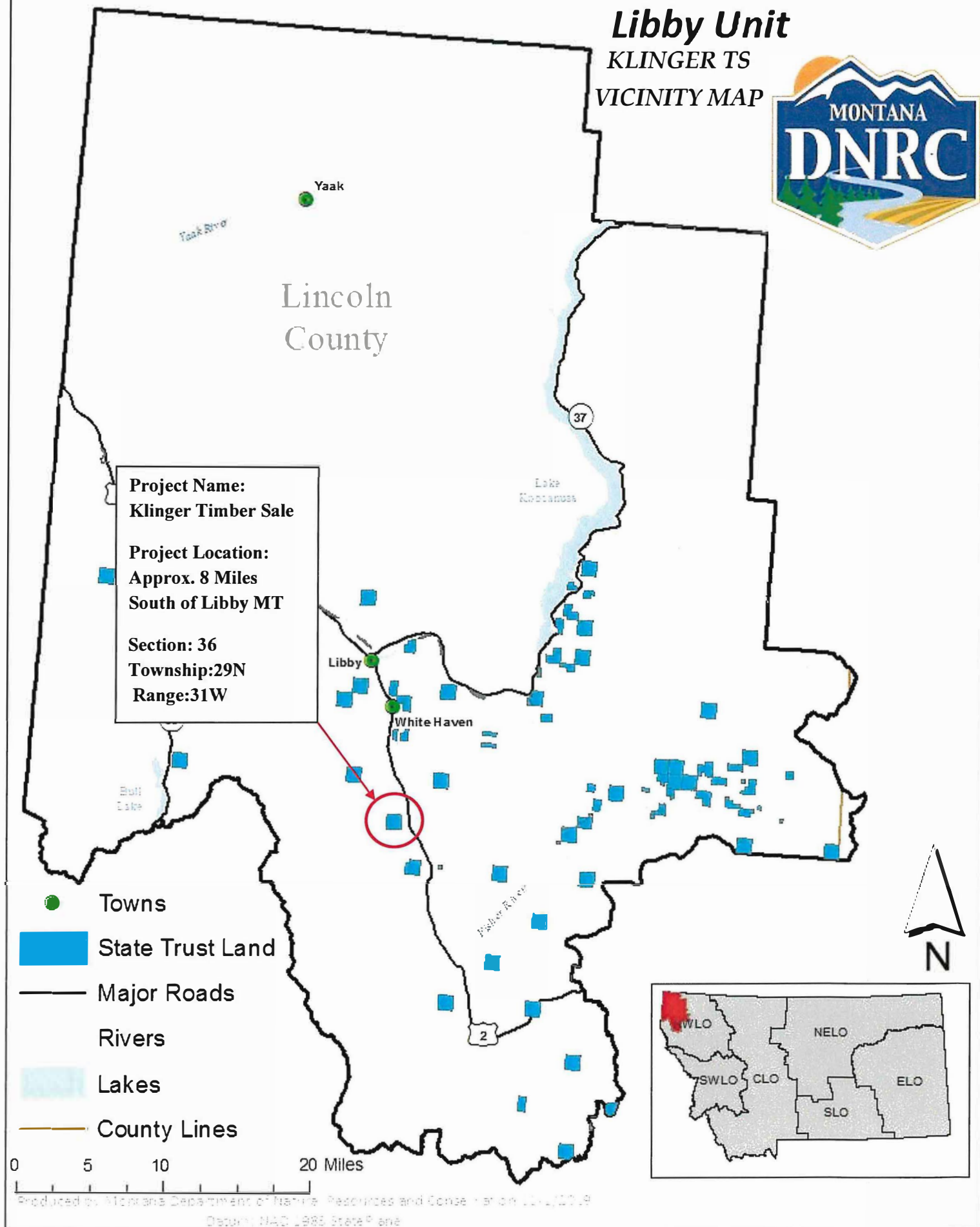
Jess.paoli@mt.gov

406-283-3529

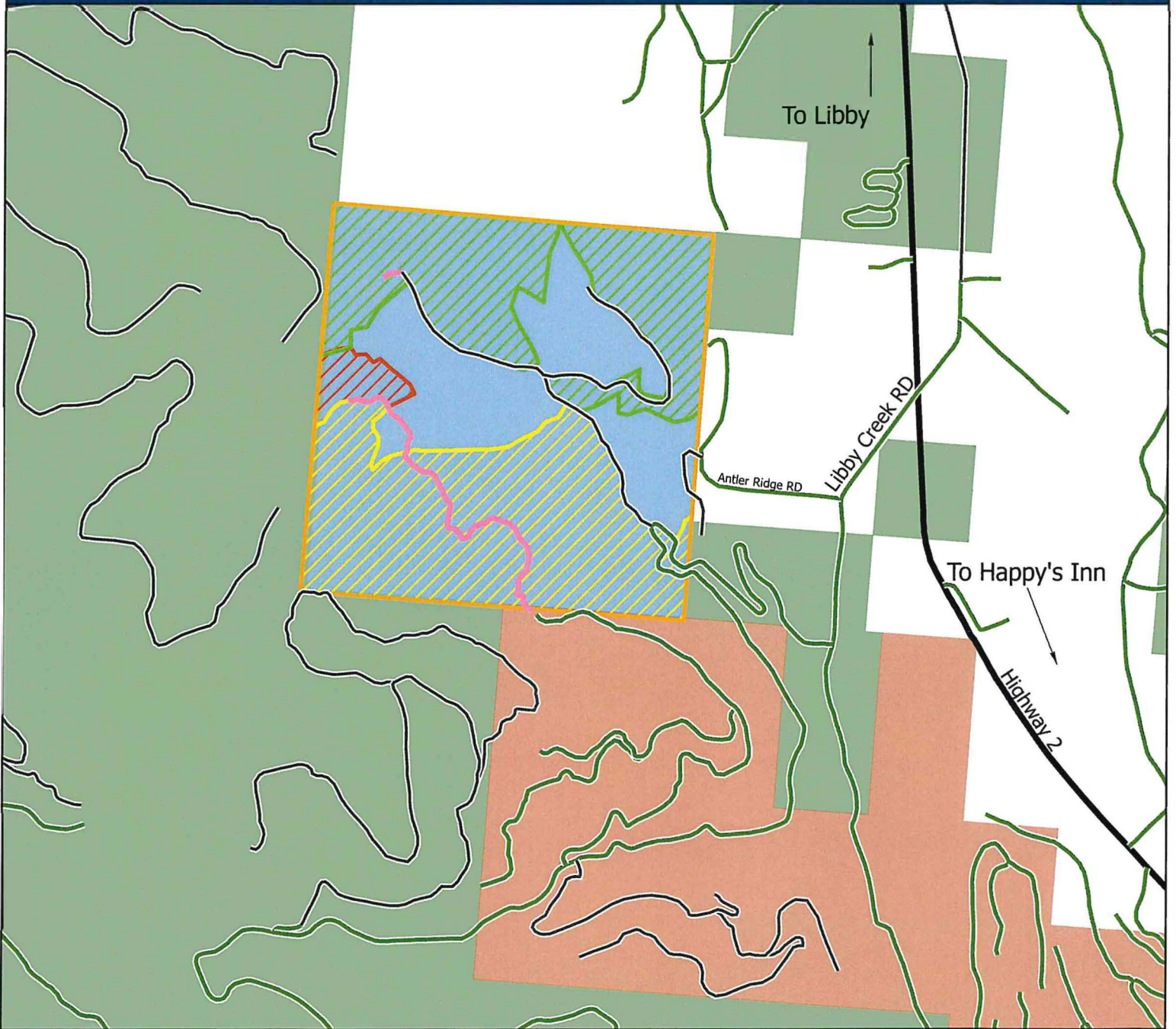
State Trust Land Vicinity Map

Libby Unit

KLINGER TS
VICINITY MAP



Klinger Timber Sale Project Area
T29N R31W Sec. 36



Legend

- Highway
- Open/Public Roads
- Restricted Class A
- Other
- P-Line
- Cable
- Combination
- Tractor
- Stimson Lumber
- Montana State Trust Lands
- US Forest Service

0 0.25 0.5 1 Miles

Scale: 1:24,000

Jess Paoli
MT DNRC
7/7/21

