

**DEPARTMENT OF NATURAL RESOURCES
AND CONSERVATION**

Southwestern Land Office - Missoula Unit

STEVE BULLOCK, GOVERNOR



STATE OF MONTANA

PHONE: (406) 542-4201
FAX: (406) 542-5807

3206 MAVERICK LANE
MISSOULA, MT 59804

**Initial Proposal
Camas Back Timber Sale
10/23/2017**

The Montana Department of Natural Resources and Conservation (DNRC), Missoula Unit is proposing to harvest timber on the following state owned parcels:

Sections 16,17, 20 & 21 T12N R15W

These sections are located approximately 26 air miles south and east of Missoula, Montana in the Cramer Creek drainage in Missoula County.

The primary objectives of the proposed project are:

- Commercially thin stands that show signs of limited growth due to overstocking.
- Remove forked top, diseased, crooked and/or insect infested trees.
- Return the stand to the desired future condition by promoting seral species
- Generate revenue for the Common Schools Trust and Acquired Land Trust

The proposal would harvest approximately 1 million board feet from an estimated 800 acres, using a combination of commercial thin, sanitation and salvage harvest prescriptions. The proposed harvest would contribute to the DNRC's sustained yield as mandated by state statute 77-5-222 MCA.

Road maintenance would take place on portions of existing roads within the project, to improve function and drainage of the road surface and bring the roads up to BMP standards. No new permanent roads are proposed. Temporary spur roads may be constructed, if needed, to access timber.

Noxious weed management, pre-commercial thinning and tree planting may also occur under the proposed action.

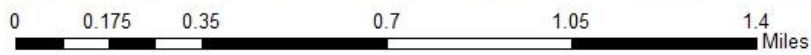
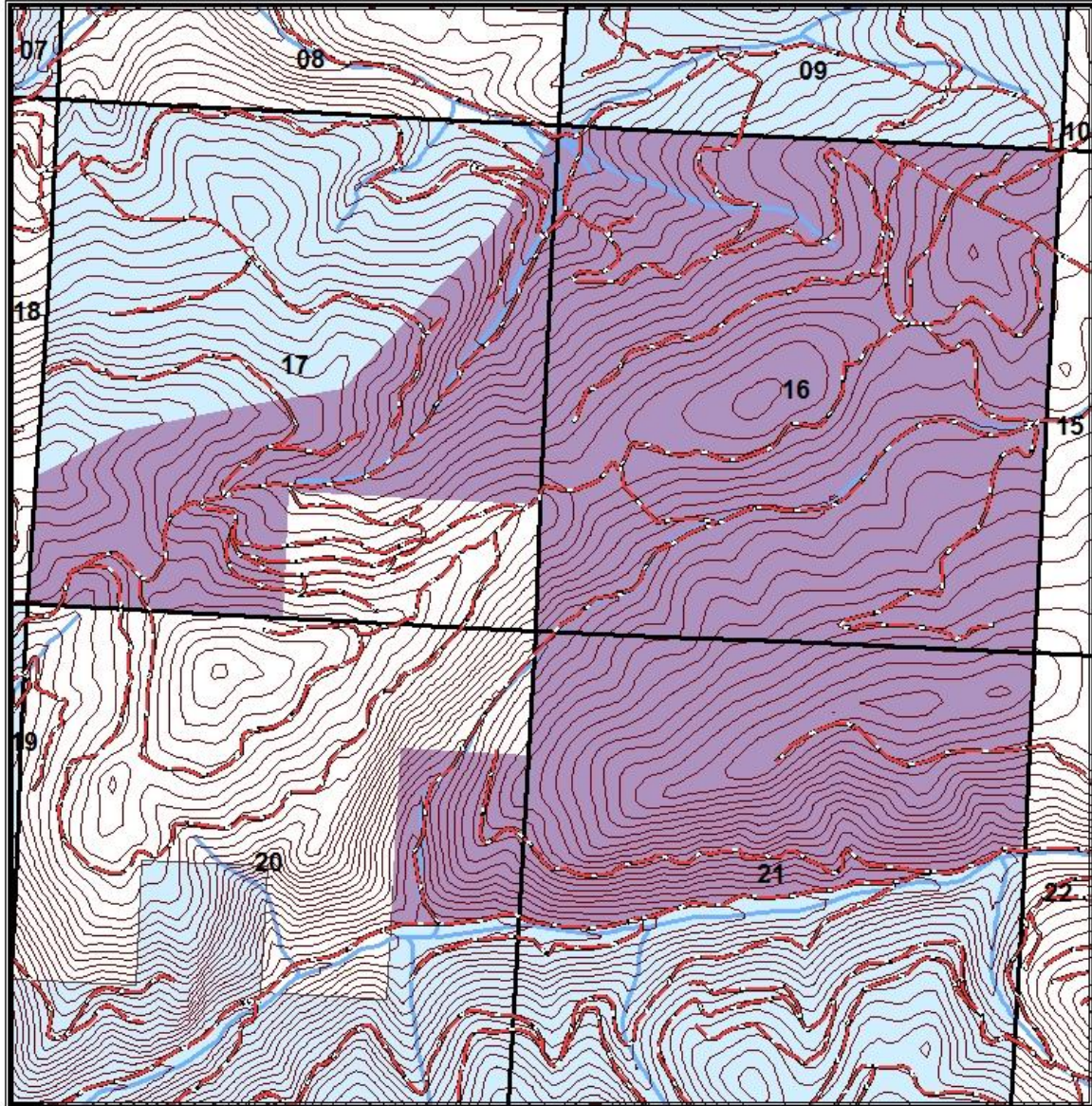
The DNRC is in the scoping phase of the project environmental assessment so all volumes, acreages and road distances are preliminary estimates. In preparation for this project, specialists such as wildlife biologists, hydrologists, soil scientists, and archeologists will be consulted.

The Montana DNRC invites written comments and suggestions concerning this proposal. Please respond by November 30, 2017 to:

Department of Natural Resources and Conservation
Attn: Amy Helena
Missoula Unit
3206 Maverick Lane
Missoula, MT 59804



Camas Back Project Area
Sections 16,17,20 & 21 T12N R15W
Missoula Unit



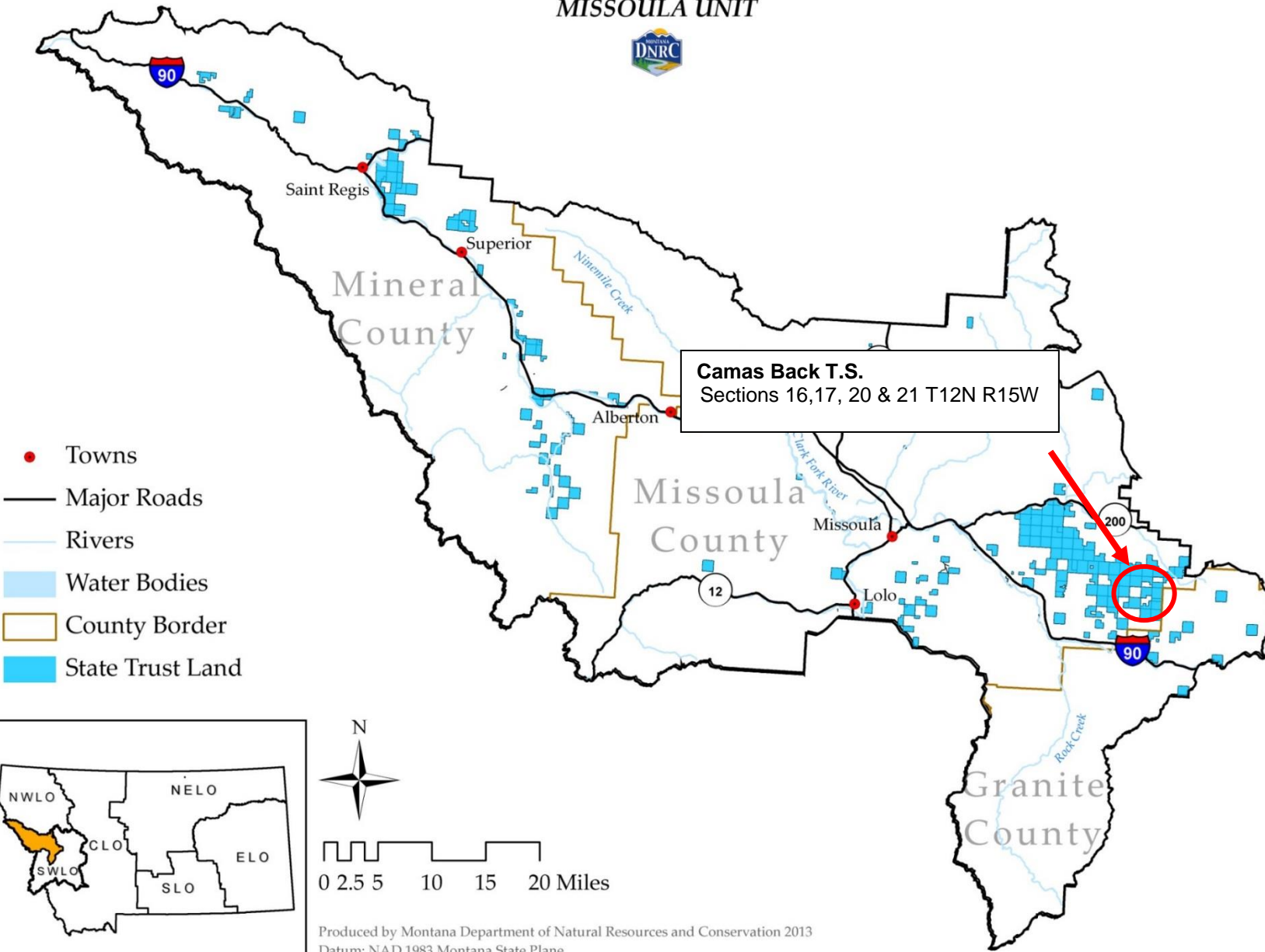
- Roads
- Streams
- Project Area



A. Helena
10/16/2017

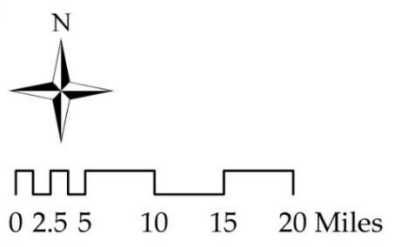
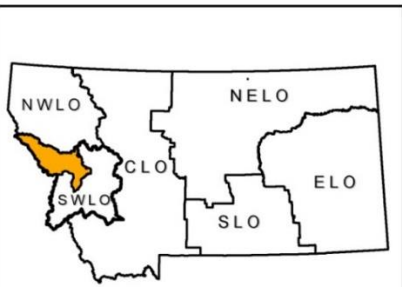
Camas Back Timber Sale Vicinity Map

MISSOULA UNIT



Camas Back T.S.
Sections 16, 17, 20 & 21 T12N R15W

- Towns
- Major Roads
- Rivers
- Water Bodies
- County Border
- State Trust Land



Produced by Montana Department of Natural Resources and Conservation 2013
Datum: NAD 1983 Montana State Plane