

Id	Gage_ID	Name	POR (water years)	PeakQ	Status
1	6027700	Fish Creek near Silver Star	1959 - 1991	33	Discontinued
2	6030300	Jefferson River trib no. 2 near Whitehall	1958 - 2012	55	Discontinued
3	6030200	Jefferson River trib near Whitehall	1960 - 1975	16	Discontinued
4	6029000	Whitetail Creek near Whitehall	1950 - 53, 1955 - 68, 1981	19	Discontinued
5	6033000	Boulder River near Boulder	1929 - 32, 1934 - 72, 1975, 1981, 1985 - 2017	78	Active
6	6031950	Cataract Creek near Basin	1973 - 2016	44	Active
7	6030500	Boulder River ab Rock Cr nr Basin	1947 - 53, 1955 - 57, 1975, 1981	12	Discontinued
8	6061500	Prickly Pear Creek near Clancy	1911 - 16, 1923 - 33, 1946 - 53, 1955 - 69, 1975, 1979 - 2002, 2006 - 17	77	Active
9	6061900	McClellan Creek nr East Helena	1960 - 75, 1981, 1989 - 90	19	Discontinued
10	6058700	Mitchell Gulch near East Helena	1959 - 2003	45	Discontinued
11	6061800	Crystal Creek near East Helena	1961 - 75, 1981, 1989 - 90	18	Discontinued
12	6061700	Jackson Creek near East Helena	1961 - 75, 1981, 1989 - 90	18	Discontinued

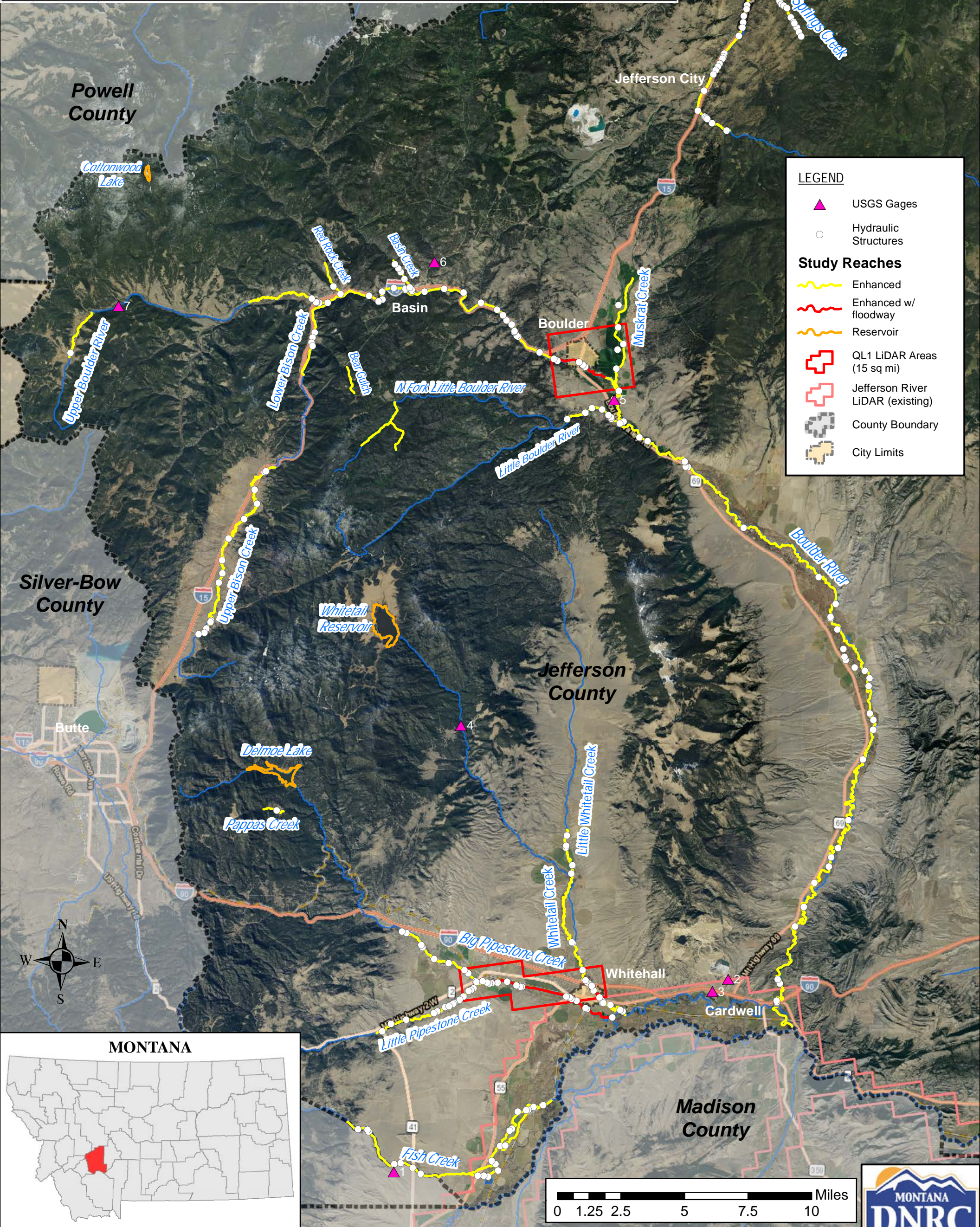
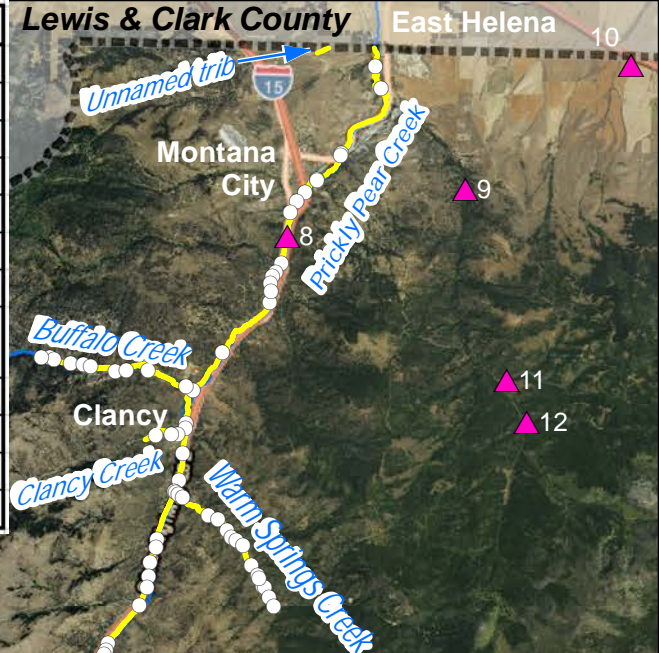


FIGURE 1: Jefferson Countywide Extents
 Project: Jefferson Countywide Study
 Drawn By: NLD
 Checked By: SES
 DATE:
 June 2018

