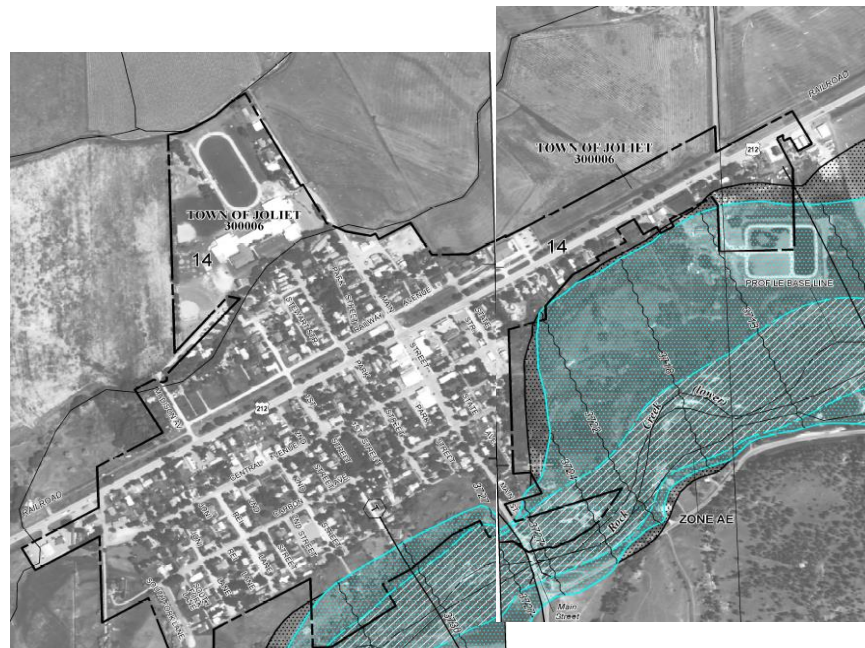


Background on the floodplain maps in the County:

Carbon County floodplain maps were modernized through a Digitized Flood Insurance Rate Map (DFIRM) project in 2012. The maps were converted from paper to the digital environment. Most of the mapped floodplains in the county are still based off flood studies from the late 1970s and early 1980s. The 2012 DFIRM project entailed digital conversion of the effective floodplains in the county, except for revised hydraulics and mapping on 9 miles of the Clarks Fork of the Yellowstone (upstream from the Carbon/Yellowstone County border). This revision, however, did not include updated hydrology or survey data. In 2017 a Partial Mapping Revision (PMR) was completed for the portion of the Yellowstone River in the county. The PMR leveraged US Army Corps of Engineers information from a Yellowstone River corridor study and updated floodplain mapping in Stillwater and Yellowstone Counties to update and replace the approximate floodplain mapping on the Carbon County side of the Yellowstone River with enhanced and floodway mapping.



Town of Joliet map from original 1980 study



Town of Joliet map from 2012 DFIRM conversion