

FOR SALE at PUBLIC AUCTION

PROPERTY IN LIBERTY COUNTY

Sale No.
1069

Montana Trust Lands 40+ Ag/Grazing Lands North of Chester, Montana

Auction
July 30, 2020
1:30p.m.
Liberty County
Courthouse
111 1st St. E
Chester, MT

Minimum bid on land:
\$15,000.00

Deposit of \$3,000.00 must
be received by the DNRC
by July 10, 2020

The State of Montana is auctioning
this trust land located in Liberty
County. Any improvements must be
purchased from the owner separately.
For more information on State Trust
Land Banking Sales go to [http://
dnrc.mt.gov/divisions/trust/real-
estate/land-banking](http://dnrc.mt.gov/divisions/trust/real-estate/land-banking)



MONTANA DNRC

Deidra Kloberdanz
Real Estate Management Bureau
PO Box 201601
1539 11th Avenue
Helena, MT 59620-1601

Phone: 406-444-4165
E-mail: deidra.kloberdanz@mt.gov



40+ deeded acres of rolling to steep slopes composed of native rangeland.

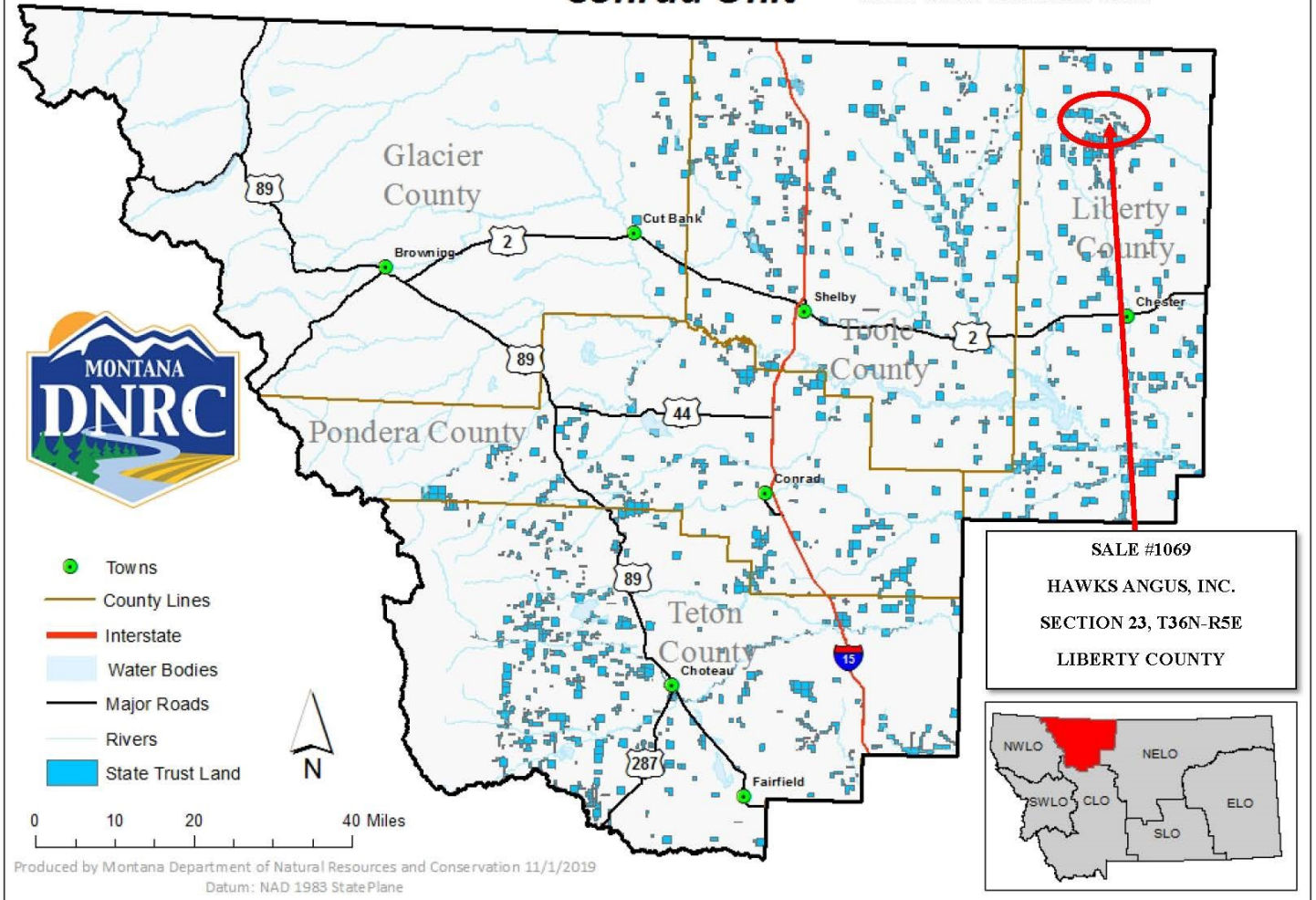
The Northern Mixed Grassed Prairie is dominated by grasses which include Western wheatgrass, Green needle grass, Needle and thread grass, Blue bunch wheatgrass, Rough fescue, Idaho fescue, Sandberg bluegrass and Prairie junegrass. This tract provides habitat for a variety of big game species (elk, mule deer, whitetail deer, and pronghorn antelope), predators (coyote, fox, and badger), upland game birds (sharp tail grouse and Hungarian partridge), other non-game mammals, raptors and various songbirds.

This 40+ acres is currently leased for grazing and produces 13 AUMs. There is no record of legal access to this property.

State Trust Land Vicinity Map

Conrad Unit

SALE #1069 VICINITY MAP



Legal description: NE4NE4, Section 23, T36N-R5E

****To participate in the auction you must be registered and have deposited the minimum 20% bid amount not later than twenty days before the date of the auction.**