

LION MOUNTAIN #2 TIMBER SALE

NOTICE OF SALE

Department of Natural Resources & Conservation Timber Sale

The Lion Mountain #2 Timber Sale is located within Section 34, T31N-R22W on the State's Kalispell Unit. Approximately 1,761 tons, consisting primarily of Douglas-fir and western larch is offered for sale.

Sealed bids will be opened at the Department of Natural Resources & Conservation, 2705 Spurgin Road, Missoula, Montana on **July 27, 2009 at 2:00 p.m.** Bids may be hand delivered or mailed and will be accepted any time prior to the bid opening. **DNRC recommends that bidders contact the Trust Land Management Division (406-542-4300) prior to the bid opening to ensure that your bid has been received.** Bids must be accompanied by a deposit of **\$822.00**, representing 5% of the minimum bid value of the sale in cashier's check, certified check, bank money order or bank draft to be applied to the stumpage for the successful bidder. Bid bonds will be accepted and, for the successful bidder, will be closed upon execution of the Timber Sale Contract and Timber Sale Bond.

The sale will be awarded to the highest responsible bidder. If the successful bidder is unable to execute the contract within **45** calendar days from the date the sale is awarded, the bid deposit will be retained by the Department as liquidated damages. The right is reserved to reject any or all bids.

Prospective bidders can obtain the sale prospectus, sale contract and bid forms from the Department of Natural Resources & Conservation, Trust Land Management Division, in Missoula (406-542-4300), the Northwestern Land Office, in Kalispell (406-751-2240), or the Kalispell Unit Office in Kalispell, MT (406-751-2266).

Visit our website at www.dnrc.mt.gov Online Services for upcoming sales and bid results.

/s/ SHAWN THOMAS, Chief
Forest Management Bureau
Trust Land Mgmt Division

Publication Dates: June 25, July 2, 9, 16, 2009

TIMBER SALE PROSPECTUS
MONTANA DEPARTMENT OF NATURAL RESOURCES AND CONSERVATION

Timber Sale Name: Lion Mountain #2			
Timber Sale Location: Section 34, T31N-R22W			
For specific sale information, contact: Pete Seigmund			
Phone	406-751-2266	Kalispell Unit Office	
For copies of the Timber Sale Contract and bid forms, contact:			
Phone	406-542-4300	Forest Management Bureau	DNRC Missoula Office
Phone	406-751-2240	Northwestern Land Office	

General Bidding Information

1. Bids must be submitted on standard Department of Natural Resources & Conservation (Dept) bid forms.
2. Timber will be sold to the highest responsible bidder; however, the Dept reserves the right to reject any or all bids.
3. The Dept recommends that bidders contact the Forest Management Bureau, Trust Land Management Division (406-542-4300) prior to the bid opening to ensure that your bid has been received.
4. A **Bid Guarantee** must accompany all bids and must be in the form of cash, cashiers check, certified check, money order, bank draft, surety bond or irrevocable letter of credit.
5. The Purchaser must submit a **Performance Bond** to the Dept within a maximum of 45 days of notification of sale award. The bond amount will be at a minimum of **\$5,000.00 or 10% of the total bid value of the sale**, whichever is greater. The performance bond may be in the form of cash, irrevocable letter of credit, surety bond or certificate of deposit. The performance bond must be maintained separately from other payments for the duration of the sale contract. See the Timber Sale Contract for additional information.
6. The Purchaser must submit an **Advance Stumpage Payment** prior to cutting any timber. The amount of the advance stumpage payment will be based on the expected harvest rate and the bid value of the stumpage. The advance stumpage payment may be in the form of cash, irrevocable letter of credit, payment bond or certificate of deposit.
7. This sale is being sold based on the gross weight of all species. Minimum price and bid price are on a per ton basis. Unless specified, the price applies to all species, green and dead. Price may vary by product. Billing will be based on gross weight. A weight ticket from a certified scale is required for each load hauled, regardless of product type.
8. The Dept has estimated the net scale merchantable sawlog volume to be available for purchase under this contract. Other products may be part of this sale. All delivered wood will be weighed and billed at per ton bid rates. The Dept recognizes that a percentage of delivered wood may not meet the log manufacturing and recovery standards of the timber sale contract. The actual percentage will vary based on the log manufacturing and recovery specifications of the purchaser and tree conditions in the sale area. The actual delivered weight may vary, resulting in an overrun or under-run of the estimated tonnage. The Dept strongly recommends that bidders evaluate these effects before bidding.
9. The Dept does not conduct detailed road appraisals. All appraised costs are gross estimates or averages, provided only to show the relative amount of work required, and not the true market value. The Dept strongly recommends that bidders make their own estimates based on contract requirements. Cost estimates provided are not guaranteed.
10. Bidders are encouraged to examine the complete Timber Sale Package and Sale Area prior to bidding. Additional information is available at the phone numbers shown above.
11. Estimates for sale volume, species percents, defect, product class, etc. provided in this prospectus and volume estimates listed in the sale contract are not guaranteed.
12. The Timber Sale Information Sheet is included as part of this prospectus.
13. This prospectus is provided for information purposes only. If the prospectus is in error or contradicts the Timber Sale Contract, the contract governs.
14. **Non-Sawlog and Biomass Removal** – This timber sale contains an unestimated amount of optional non-sawlog material. This material is available at \$1.50/ton.
15. **High Hazard Slash Reduction** – The Purchaser will be required to meet high hazard slash reduction standards in portions of harvest units adjacent to private property boundaries and open roads. Any required slash burning will be completed by the State.

Timber Sale Information Sheet
Montana Department of Natural Resources and Conservation

Timber Sale Cruise Data										
SPECIES	PP	DF	WL	LP	ES	WF	CE	WP	Dead	TOTAL or AVE
Minimum Bid										\$9.32/ton
Pounds per cubic foot	62.0	61.7	58.3	56.0					40.0	
Estimated tons of sawlogs (5.6" top DIB)	17.9	1268.6	358.2	57.7					58.7	1,761 tons
Estimated tons of other material (pulp, etc)										0 tons
Gross MBF (Scribner 5.6" top DIB)	2.5	184.1	54.8	7.0					41.9	290 MBF
% Cull and Breakage	15	12	10	18					70	24.4%
Net MBF (Scribner 5.6" top DIB)	2.1	151.0	48.3	5.8					12.3	220 MBF
Average logs per MBF	44.5	77.6	56.2	258.5					65	71.1 logs/M
Average DBH	11.0	10	9.2	7.4					14	10.0 in.
Average tons per acre harvested in leave-tree marked units	→									28 tons/ac
Average tons per acre harvested in cut-tree-marked units	→									0 tons/ac
Average MBF to cut per acre on the timber sale	→									3.4 MBF/ac
Range of cut trees per acre based on unit cruise	→									165
Calculated Sampling Error: Total cruised volume will fall between	1,586 and 1,936 Net MBF in 9 out of 10 cruises									9.9%
Tons Per Thousand Board Feet										
Contract Value - Estimated tons hauled per thousand Scribner board feet	1,761 estimated tons to a 5.6 inch top / 220 Net MBF Scribner to a 5.6 inch top DIB									8.02 tons/MBF

Contract Information	
Contract ending date	7/31/2010
Contract length	24 months
Operating Season:	Year round - When soil conditions are dry, frozen or snow covered.

Timber Sale Information Sheet
Montana Department of Natural Resources and Conservation

Logging Information	
% of volume logged by clearcut or seed tree cut	00%
% of volume logged with tractors	100%
% of volume logged by ground lead (jammer)	00%
% of volume logged by skyline	00%
Yarding distance tractor	600 ft.
Yarding distance ground lead	n/a
Yarding distance skyline	n/a
Estimated haul distance (paved)	17.0 miles
Estimated haul distance (unpaved)	0.5 miles

Road development and maintenance fees and estimates	
Estimated development cost total	\$10,218.00
Estimated development cost per ton	\$5.80/ton
Estimated development cost perMBF	\$46.55/MBF
Estimated State road maintenance cost total	\$203.00
Estimated State road maintenance cost per ton	\$0.12/ton
Private road maintenance charges per ton	\$0.00/ton
USFS road maintenance charges per ton	\$0.00/ton
Miles of road construction	0.3 miles
Miles of road reconstruction	0.3 miles
Miles of road with site improvements	0.1 miles
Miles of road reclamation or abandonment	0.0 miles
Miles of road maintenance and blading	0.0 miles

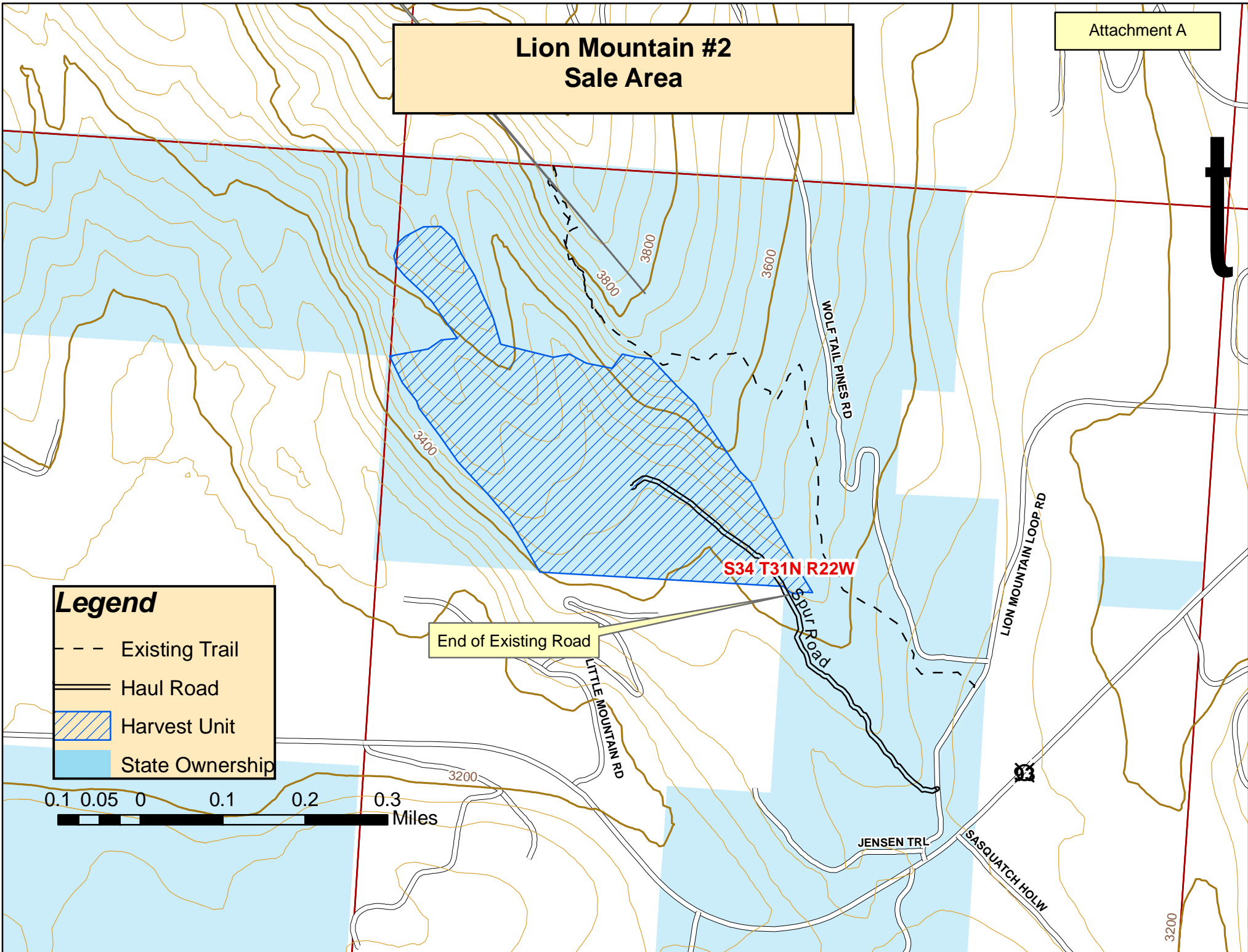
Purchaser fees and estimated costs	
Forest Improvement fee perMBF	\$0.00/MBF
Forest Improvement fee per ton	\$0.00/ton
Forest Improvement fee estimated total	\$0.00
Forest Improvement fee quarterly installment	\$0.00
Estimated Purchaser-do FI total \$	\$0
Estimated Purchaser-do FI per ton	\$0.00/ton
Estimated Purchaser-do slash disposal work total	\$200.00
Estimated Purchaser-do slash disposal work per ton	\$0.11/ton
Bid Guarantee (total \$)	\$822.00
Performance Bond (total \$)	\$5,000 minimum

Unit harvest volume				
Unit #	Acres	Est Tons	Est MBF	Harvest date
1	64	1,761	220	March 15, 2010
	64 Ac.	1,761 tons	220 MBF	

Timber Sale Information Sheet
Montana Department of Natural Resources and Conservation

Legal description by trust					Unit harvest volume			
Legal description - subdivisions	Section	Twn	Rge	Grant	Unit #	Acres	Est Tons	Est MBF
NW 1/4	34	31N	22W	A.C.I.	1	64	1,761	220
See <u>Instructions</u> for how to fill in this table								
Totals						64 Ac.	1,761 T	220 M

Lion Mountain #2 Sale Area



Legend

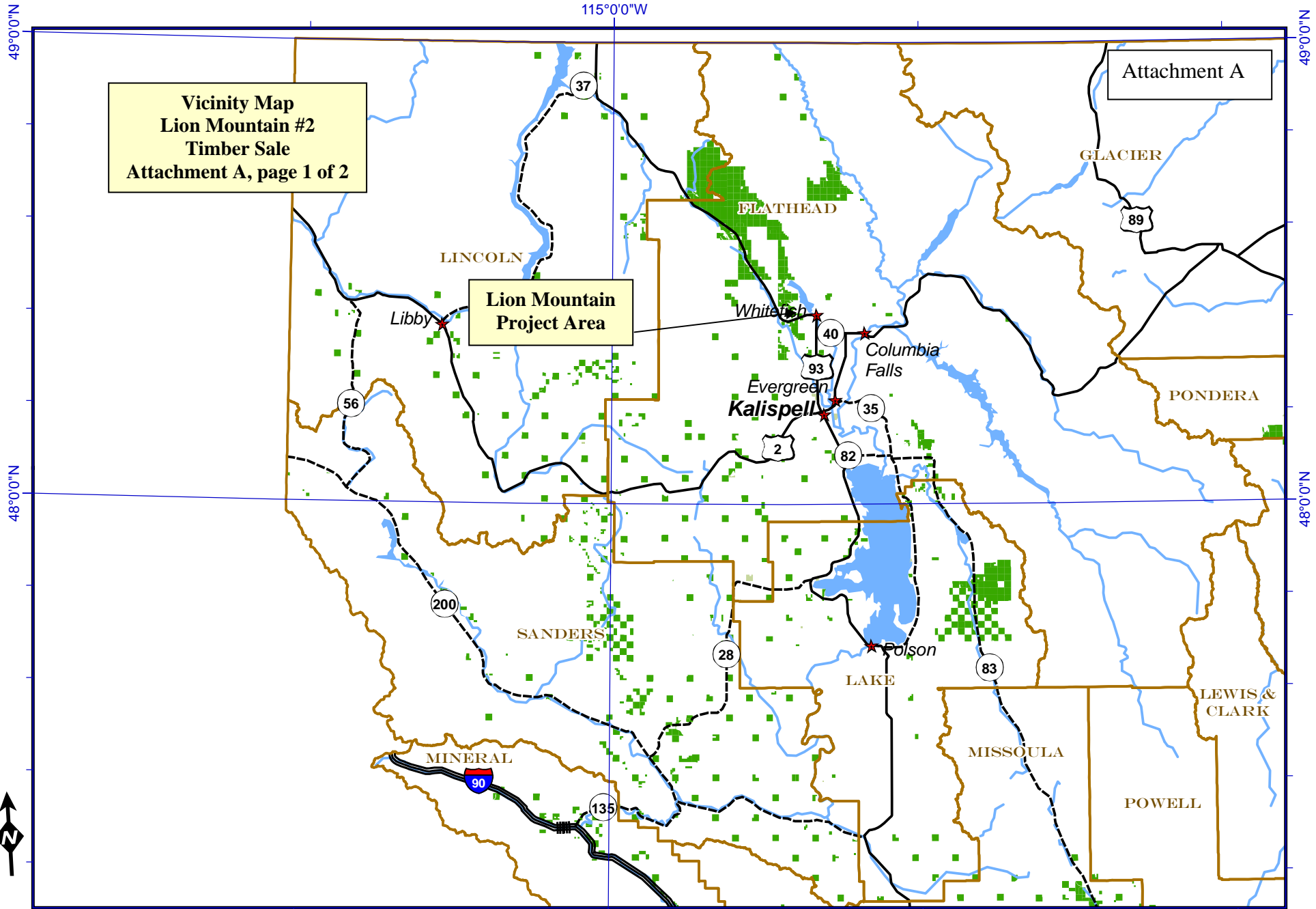
- - - Existing Trail
- Haul Road
- ▨ Harvest Unit
- State Ownership



End of Existing Road

S34 T31N R22W

3200



Vicinity Map
 Lion Mountain #2
 Timber Sale
 Attachment A, page 1 of 2

Lion Mountain
 Project Area

Attachment A



	Interstate Highway		Rivers		Lakes
	U.S. Route		City		DNRC managed for timber
	State Highway		County		DNRC other

21 February 2007
 Montana DNRC
 Technical Services Section/dr

