

NOTICE OF SALE

**Department of Natural Resources & Conservation Timber Sale**

The Windy Pass Salvage Timber Sale is located within Section 36, T23N-R23W, on the State's Kalispell Unit. Approximately 4,770 tons, consisting primarily of Douglas-fir and ponderosa pine sawlogs is offered for sale.

Sealed bids will be opened at the Department of Natural Resources & Conservation, 2705 Spurgin Road, Missoula, Montana on **November 26, 2012 at 2:00 p.m.** Bids may be hand delivered or mailed and will be accepted any time prior to the bid opening. **DNRC recommends that bidders contact the Trust Land Management Division (406-542-4300) prior to the bid opening to ensure that your bid has been received.** Bids must be accompanied by a deposit of **\$4,369.00**, representing 5% of the minimum bid value of the sale in cashier's check, certified check, bank money order or bank draft to be applied to the stumpage for the successful bidder. Bid bonds will be accepted and, for the successful bidder, will be closed upon execution of the Timber Sale Contract and Timber Sale Bond.

The sale will be awarded to the highest responsible bidder. **Award of the timber sale is conditional upon approval of the timber sale by the State Board of Land Commissioners at their November 19, 2012 meeting.** If the successful bidder is unable to execute the contract within **21** calendar days from the date the sale is awarded, the bid deposit will be retained by the Department as liquidated damages. The right is reserved to reject any or all bids.

Prospective bidders can obtain the sale prospectus, sale contract and bid forms from the Department of Natural Resources & Conservation, Trust Land Management Division, in Missoula (406-542-4300), the Northwest Land Office, in Missoula (406-751-2257), or Brent Kallander at the Kalispell Unit, (406-751-2265).

Visit our website at <http://www.dnrc.mt.gov/trust/timber/bids.asp> for upcoming sales and bid results

/s/ SONYA GERMANN, Chief  
Forest Management Bureau  
Trust Land Mgmt Division

Publication Dates: November 8, 15, 22, 2012

**Timber Sale Information Sheet**  
**Montana Department of Natural Resources and Conservation**

<b>TIMBER SALE NAME</b>											
<b>Timber Sale Cruise Data</b>											
SPECIES	PP	DF	WL	LP	ES	WF	CE	WP	Dead	TOTAL or AVE	
Minimum Bid										<b>\$12.07/ton</b>	
Pounds per cubic foot	62	62	58								
Estimated tons of sawlogs (5.6" top DIB)	2,134	2,497	139							<b>4,770 tons</b>	
Estimated tons of other material (pulp, etc)										0 tons	
Gross MBF (Scribner 5.6" top DIB)	479	489	31							999 MBF	
% Cull and Breakage	5	9	19							7.7%	
Net MBF (Scribner 5.6" top DIB)	453	444	25							922 MBF	
Average logs per MBF	23	25	34							24.0 logs/M	
Average DBH	12.3	13.1	12.5							13.0 in.	
Average tons per acre harvested in leave-tree marked units	_____→									31 tons/ac	
Average tons per acre harvested in cut-tree-marked units	_____→									0 tons/ac	
Average MBF to cut per acre on the timber sale	_____→									5.9 MBF/ac	
Range of cut trees per acre based on unit cruise	_____→									21	
Calculated Sampling Error: Total cruised volume will fall between	790 and 1,064 Net MBF in 9 out of 10 cruises									14.8%	
<b>Tons Per Thousand Board Feet</b>											
Contract Value - Estimated tons hauled per thousand Scribner board feet	4,770 estimated tons to a 5.6 inch top / 922 Net MBF Scribner to a 5.6 inch top DIB									5.17 tons/MBF	

<b>Contract Information</b>	
Contract ending date	11/1/2013
Contract length	11 months
Operating Season:	Jan 1- April 15; July 1-Dec 31

**Timber Sale Information Sheet**  
**Montana Department of Natural Resources and Conservation**

<b>Logging Information</b>	
% of volume logged by clearcut or seed tree cut	100%
% of volume logged with tractors	100%
% of volume logged by ground lead (jammer)	00%
% of volume logged by skyline	00%
Yarding distance tractor (average)	500 ft.
Yarding distance ground lead (average)	0 ft.
Yarding distance skyline (average)	0 ft.
Estimated haul distance (paved)	40.0 miles
Estimated haul distance (unpaved)	17.0 miles

<b>Purchaser fees and estimated costs</b>	
Forest Improvement fee perMBF	\$25.13/MBF
Forest Improvement fee per ton	\$4.86/ton
Forest Improvement fee estimated total	\$23,182.20
Forest Improvement fee quarterly installment	\$3,863.70
Estimated Purchaser-do FI total \$	\$0
Estimated Purchaser-do FI per ton	\$0.00/ton
Estimated Purchaser-do slash disposal work total	\$0.00
Estimated Purchaser-do slash disposal work per ton	\$0.00/ton
Bid Guarantee (total \$)	<b>\$4,369.00</b>
Performance Bond (total \$)	<b>20% of bid value</b>

<b>Road development and maintenance fees and estimates</b>	
Estimated road development cost total	\$375
Estimated road development cost per ton	\$0.08/ton
Estimated road development cost perMBF	\$0.41/MBF
Estimated Purchaser-do road maintenance cost total	\$455
Estimated Purchaser-do road maintenance cost per ton	\$0.10/ton
Private road maintenance charges per ton	\$0.00/ton
USFS road maintenance charges per ton	\$0.00/ton
Miles of road construction	0.0 miles
Miles of road reconstruction	0.0 miles
Miles of road with site improvements	0.0 miles
Miles of road reclamation or abandonment	0.0 miles
Miles of road maintenance and blading	1.3 miles

<b>Unit harvest volume</b>				
Unit #	Acres	Est Tons	Est MBF	Harvest date
1	39	926	163	October 1, 2013
2	93	2,942	633	April 15, 2013
3	24	902	126	October 1, 2013
	156 Ac.	4,770 tons	922 MBF	

**Timber Sale Information Sheet**  
**Montana Department of Natural Resources and Conservation**

Legal description by trust					Unit harvest volume			
Legal description - subdivisions	Section	Twn	Rge	Grant	Unit #	Acres	Est Tons	Est MBF
S½N½, S½	36	23N	23W	C.S.	1	39	926	163
					2	93	2,942	633
					3	24	902	126
See <u>Instructions</u> for how to fill in this table								
Totals						156 Ac.	4,770 T	922 M

**TIMBER SALE PROSPECTUS**  
**MONTANA DEPARTMENT OF NATURAL RESOURCES AND CONSERVATION**

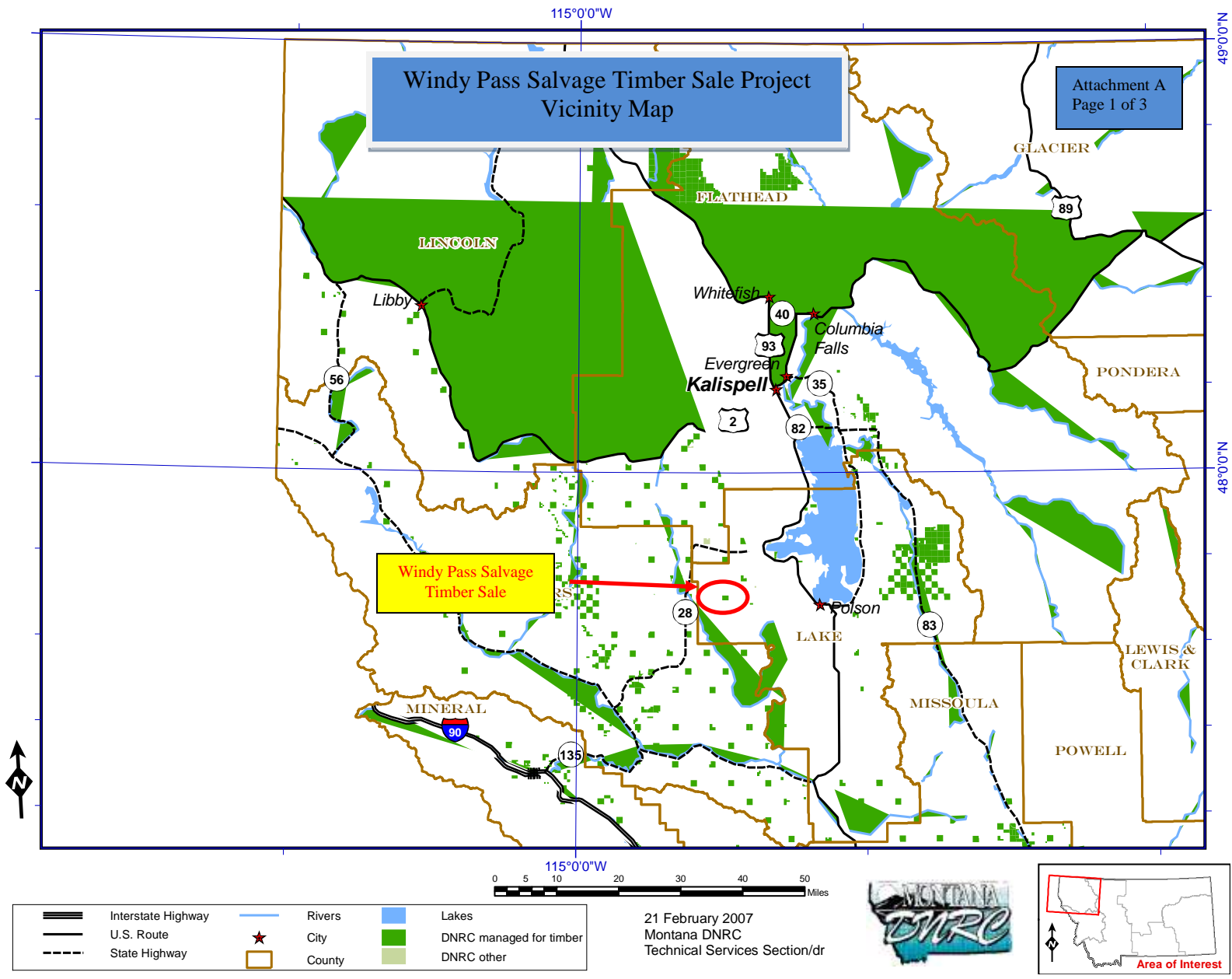
<b>Timber Sale Name: Windy Pass Salvage</b>			
<b>Timber Sale Location: Section 36, T23N-R23W</b>			
<b>For specific sale information, contact:</b>			
Phone	406-751-2265	Brent Kallander	Kalispell Unit Office
<b>For copies of the Timber Sale Contract and bid forms, contact:</b>			
Phone	406-542-4300	Forest Management Bureau	DNRC Missoula Office
Phone	406-751-2257	Northwestern	Land Office

**General Bidding Information**

1. Bids must be submitted on standard Department of Natural Resources & Conservation (Dept) bid forms. **Award of the timber sale is conditional upon approval of the timber sale by the State Board of Land Commissioners at their November 19, 2012 meeting.**
2. Timber will be sold to the highest responsible bidder; however, the Dept reserves the right to reject any or all bids.
3. The Dept recommends that bidders contact the Forest Management Bureau, Trust Land Management Division (406-542-4300) prior to the bid opening to ensure that your bid has been received.
4. A **Bid Guarantee** must accompany all bids and must be in the form of cash, cashiers check, certified check, money order, bank draft, surety bond or irrevocable letter of credit.
5. The Purchaser must submit a **Performance Bond** to the Dept within a maximum of **21** days of notification of sale award. The bond amount will be, at a minimum, 20% of the total bid value of the sale. The performance bond may be in the form of cash, irrevocable letter of credit, surety bond or certificate of deposit. The performance bond must be maintained separately from other payments for the duration of the sale contract. See the Timber Sale Contract for additional information.
6. The Purchaser must submit an **Advance Stumpage Payment** prior to cutting any timber. The amount of the advance stumpage payment will be based on the expected harvest rate and the bid value of the stumpage. The advance stumpage payment may be in the form of cash, irrevocable letter of credit, payment bond or certificate of deposit.
7. At rates specified in the Contract, the Purchaser will pay **Forest Improvement Fees** on all sawlog volume. All applicable **Road Use and/or Maintenance fees** will also be paid by the Purchaser in addition to stumpage payments.
8. This sale is being sold based on the gross weight of all species. Minimum price and bid price are on a per ton basis. Unless specified, the price applies to all species, green and dead. Price may vary by product. Billing will be based on gross weight. A weight ticket from a certified scale is required for each load hauled, regardless of product type.
9. The Dept has estimated the net scale merchantable sawlog volume to be available for purchase under this contract. Other products may be part of this sale. All delivered wood will be weighed and billed at per ton bid rates. The Dept recognizes that a percentage of delivered wood may not meet the log manufacturing and recovery standards of the timber sale contract. The actual percentage will vary based on the log manufacturing and recovery specifications of the purchaser and tree conditions in the sale area. The actual delivered weight may vary, resulting in an overrun or under-run of the estimated tonnage. The Dept strongly recommends that bidders evaluate these effects before bidding.
10. The Dept does not conduct detailed road appraisals. All appraised costs are gross estimates or averages, provided only to show the relative amount of work required, and not the true market value. The Dept strongly recommends that bidders make their own estimates based on contract requirements. Cost estimates provided are not guaranteed.
11. Bidders are encouraged to examine the complete Timber Sale Package and Sale Area prior to bidding. Additional information is available at the phone numbers shown above.
12. Estimates for sale volume, species percents, defect, product class, etc. provided in this prospectus and volume estimates listed in the sale contract are not guaranteed.
13. This prospectus is provided for information purposes only. If the prospectus is in error or contradicts the Timber Sale Contract, the contract governs.

**Additional Sale Information:**

1. Season of operation is from January 1- April 15 and July 1- December 31. No harvest activities allowed between April 15 and July 1 due to the black –backed woodpecker nesting period.
2. Slashing of logging damaged trees is required.
3. The rate for blue stained sawlogs is \$3.00/ton. The volume is not estimated.
4. Other material may be removed from the sale if approved by the Forest Officer at a negotiated rate and covered by a contract amendment.
5. Unit 2 must be completed by April 15, 2012.



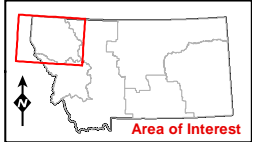
**Windy Pass Salvage Timber Sale Project  
Vicinity Map**

Attachment A  
Page 1 of 3

**Windy Pass Salvage  
Timber Sale**

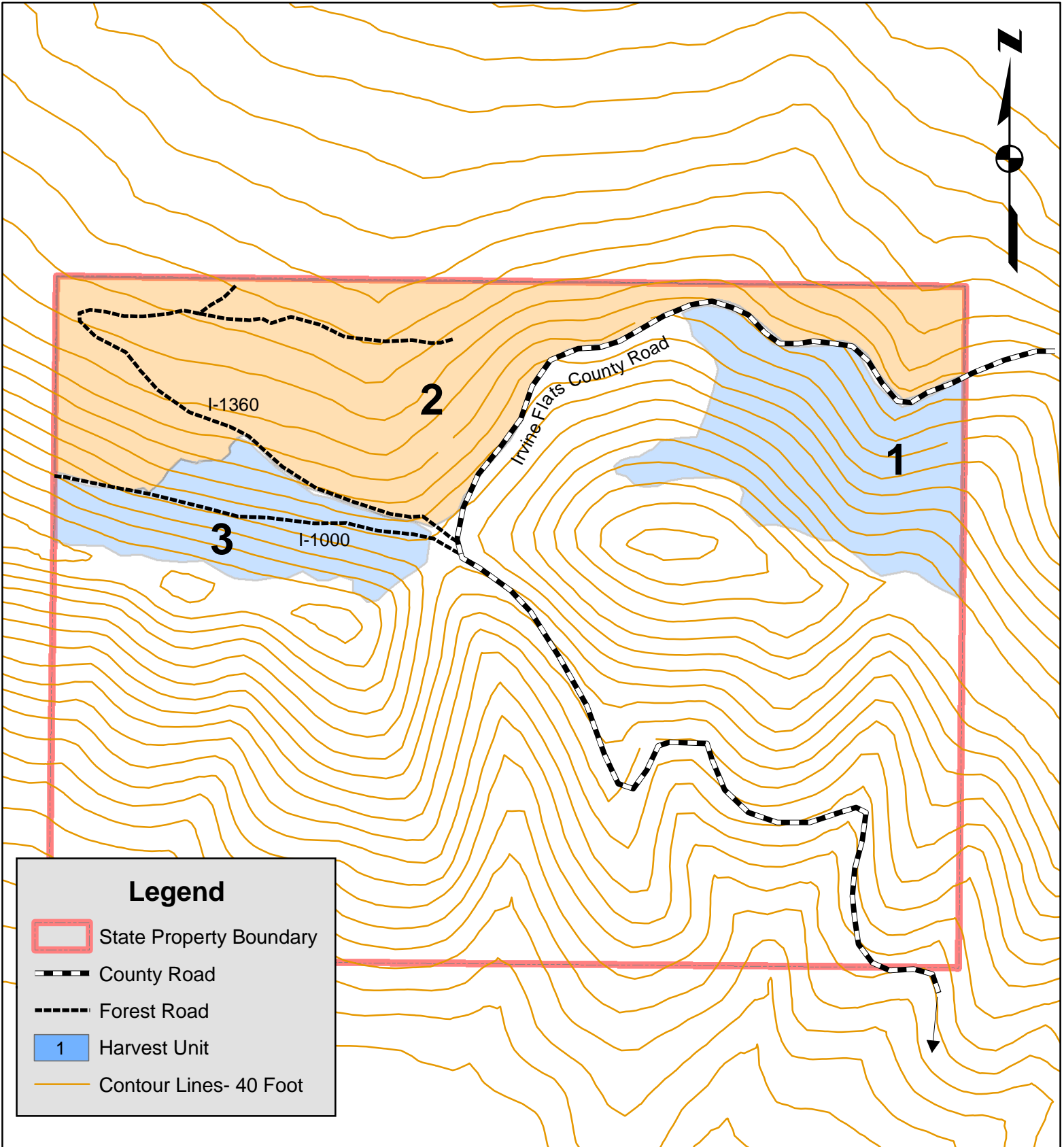
- |                    |        |                         |
|--------------------|--------|-------------------------|
| Interstate Highway | Rivers | Lakes                   |
| U.S. Route         | City   | DNRC managed for timber |
| State Highway      | County | DNRC other              |

21 February 2007  
Montana DNRC  
Technical Services Section/dr



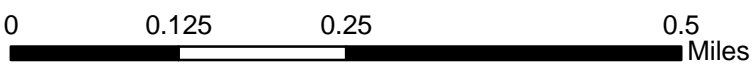


# Windy Pass Salvage Harvest Unit Map Sec. 36, T23N, R23W



**Legend**

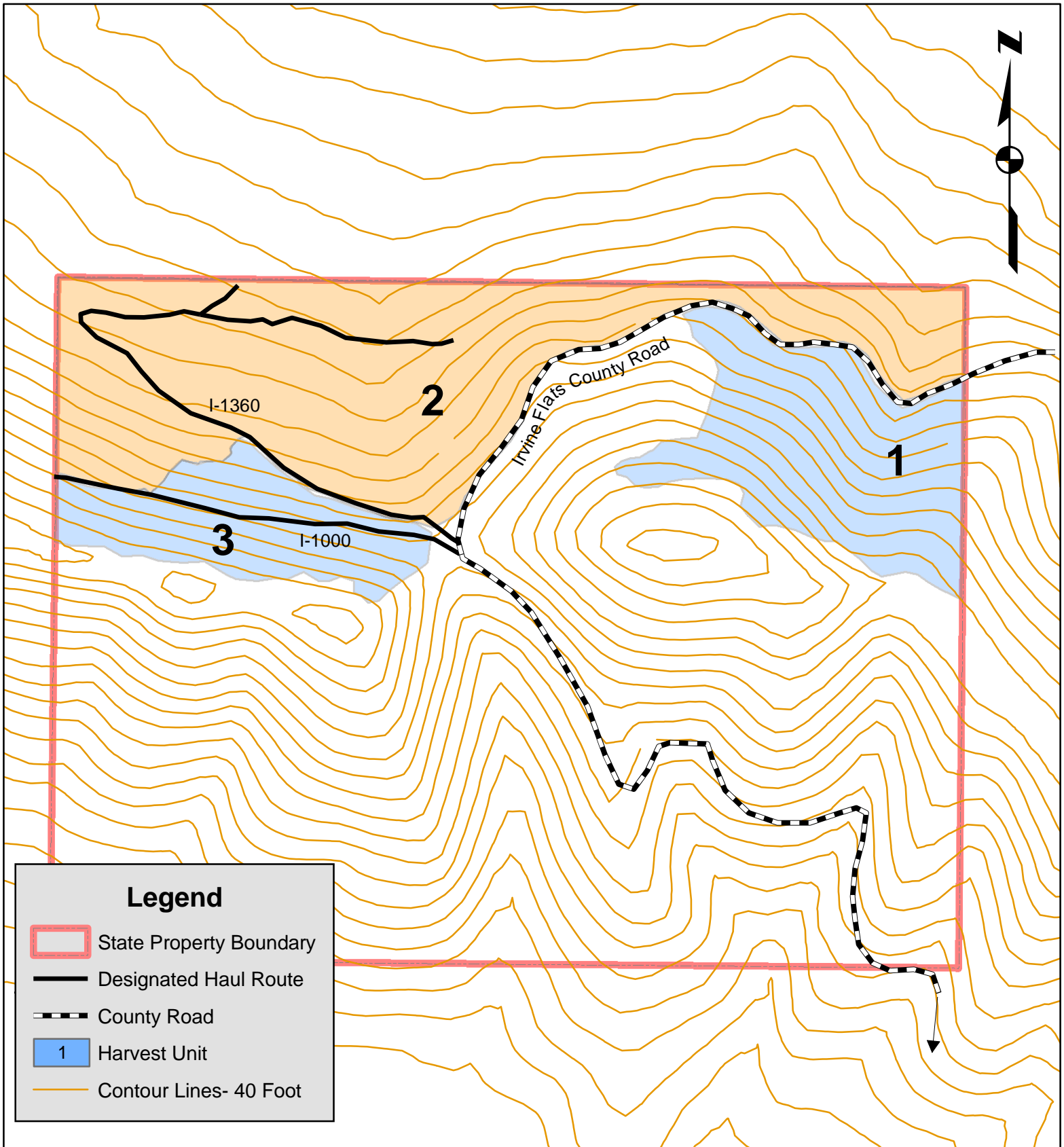
- State Property Boundary
- County Road
- Forest Road
- Harvest Unit
- Contour Lines- 40 Foot







# Windy Pass Salvage Designated Haul Route Map Sec. 36, T23N, R23W



**Legend**

- State Property Boundary
- Designated Haul Route
- County Road
- 1 Harvest Unit
- Contour Lines- 40 Foot

