

NOTICE OF SALE

Department of Natural Resources & Conservation Timber Sale

The Tarkio Timber Sale is located within Sections 35 & 36, T15N-R25W, and Section 2, T14N-R25W on the State's Missoula Unit. Approximately 17,673 tons, consisting primarily of ponderosa pine sawlogs, is offered for sale.

Sealed bids will be opened at the Department of Natural Resources & Conservation, 2705 Spurgin Road, Missoula, Montana on **May 9, 2011 at 2:00 p.m.** Bids may be hand delivered or mailed and will be accepted any time prior to the bid opening. **DNRC recommends that bidders contact the Trust Land Management Division (406-542-4300) prior to the bid opening to ensure that your bid has been received.** Bids must be accompanied by a deposit of **\$16,975.00**, representing 5% of the minimum bid value of the sale in cashier's check, certified check, bank money order or bank draft to be applied to the stumpage for the successful bidder. Bid bonds will be accepted and, for the successful bidder, will be closed upon execution of the Timber Sale Contract and Timber Sale Bond.

The sale will be awarded to the highest responsible bidder. If the successful bidder is unable to execute the contract within **45** calendar days from the date the sale is awarded, the bid deposit will be retained by the Department as liquidated damages. The right is reserved to reject any or all bids.

Prospective bidders can obtain the sale prospectus, sale contract and bid forms from the Department of Natural Resources & Conservation, Trust Land Management Division, in Missoula (406-542-4300), the Southwestern Land Office in Missoula (406-542-4200), or the Missoula Unit Office (406-542-4245).

Visit our website at <http://www.dnrc.mt.gov/trust/timber/bids.asp> for upcoming sales and bid results

/s/ Shawn Thomas, Chief
Forest Management Bureau
Trust Land Mgmt Division

Publication Dates: April 6, 13, 20, 27, 2011

TIMBER SALE PROSPECTUS
MONTANA DEPARTMENT OF NATURAL RESOURCES AND CONSERVATION

Timber Sale Name: Tarkio Timber Sale			
Timber Sale Location: Sections 35 & 36, T15N-R25W and Section 2, T14N-R25W			
For specific sale information, contact: Wayne Lyngholm			
Phone	406-542-4245	Missoula	Unit Office
For copies of the Timber Sale Contract and bid forms, contact:			
Phone	406-542-4300	Forest Management Bureau	DNRC Missoula Office
Phone	406-542-4264	Southwest	Land Office

General Bidding Information

1. Bids must be submitted on standard Department of Natural Resources & Conservation (Dept) bid forms.
2. Timber will be sold to the highest responsible bidder; however, the Dept reserves the right to reject any or all bids.
3. The Dept recommends that bidders contact the Forest Management Bureau, Trust Land Management Division (406-542-4300) prior to the bid opening to ensure that your bid has been received.
4. A **Bid Guarantee** must accompany all bids and must be in the form of cash, cashiers check, certified check, money order, bank draft, surety bond or irrevocable letter of credit.
5. The Purchaser must submit a **Performance Bond** to the Dept within a maximum of 45 days of notification of sale award. The bond amount will be 10% of the total bid value of the sale. The performance bond may be in the form of cash, irrevocable letter of credit, surety bond or certificate of deposit. The performance bond must be maintained separately from other payments for the duration of the sale contract. See the Timber Sale Contract for additional information.
6. The Purchaser must submit an **Advance Stumpage Payment** prior to cutting any timber. The amount of the advance stumpage payment will be based on the expected harvest rate and the bid value of the stumpage. The advance stumpage payment may be in the form of cash, irrevocable letter of credit, payment bond or certificate of deposit.
7. At rates specified in the Contract, the Purchaser will pay **Forest Improvement Fees** on all sawlog volume. All applicable **Road Use and/or Maintenance fees** will also be paid by the Purchaser in addition to stumpage payments.
8. This sale is being sold based on the gross weight of all species. Minimum price and bid price are on a per ton basis. Unless specified, the price applies to all species, green and dead. Price may vary by product. Billing will be based on gross weight. A weight ticket from a certified scale is required for each load hauled, regardless of product type.
9. The Dept has estimated the net scale merchantable sawlog volume to be available for purchase under this contract. Other products may be part of this sale. All delivered wood will be weighed and billed at per ton bid rates. The Dept recognizes that a percentage of delivered wood may not meet the log manufacturing and recovery standards of the timber sale contract. The actual percentage will vary based on the log manufacturing and recovery specifications of the purchaser and tree conditions in the sale area. The actual delivered weight may vary, resulting in an overrun or under-run of the estimated tonnage. The Dept strongly recommends that bidders evaluate these effects before bidding.
10. The Dept does not conduct detailed road appraisals. All appraised costs are gross estimates or averages, provided only to show the relative amount of work required, and not the true market value. The Dept strongly recommends that bidders make their own estimates based on contract requirements. Cost estimates provided are not guaranteed.
11. Bidders are encouraged to examine the complete Timber Sale Package and Sale Area prior to bidding. Additional information is available at the phone numbers shown above.
12. Estimates for sale volume, species percents, defect, product class, etc. provided in this prospectus and volume estimates listed in the sale contract are not guaranteed.
13. This prospectus is provided for information purposes only. If the prospectus is in error or contradicts the Timber Sale Contract, the contract governs.

Additional Sale Information:

1. The Purchaser may elect to remove non-sawlog material at the rate of \$1.00/ton if approved by the Forest Officer.
2. The Purchaser shall exercise caution when skidding, felling and processing logs in the vicinity of overhead and buried utilities including power and communication lines. Decking, processing, loading logs and piling slash is prohibited within 200 feet of overhead lines.
3. All road work and herbicide application specified in the timber sale contract must be completed prior to initiating harvest operations.
4. The timber sale contract specifies harvest operations may only be conducted from December 1 – March 1 of each year. Operations in harvest unit 3 are further restricted to the period December 1 – January 31 to minimize potential disturbances to nesting bald eagles.

Timber Sale Information Sheet
Montana Department of Natural Resources and Conservation

TARKIO TIMBER SALE

Timber Sale Cruise Data										
SPECIES	PP	DF	WL	LP	ES	WF	CE	WP	Dead	TOTAL or AVE
Minimum Bid										\$19.21/ton
Pounds per cubic foot	62		58							
Estimated tons of sawlogs (5.6" top DIB)	17,276		397							17,673 tons
Estimated tons of other material (pulp, etc)	0		0							0 tons
Gross MBF (Scribner 5.6" top DIB)	2,814		72							2,886 MBF
% Cull and Breakage	0.1%		0.0%							0.1%
Net MBF (Scribner 5.6" top DIB)	2,810		72							2,882 MBF
Average logs per MBF	14.6		14							14.6 logs/M
Average DBH	14.4		15.1							14.4 in.
Average tons per acre harvested in leave-tree marked units	—————→									45 tons/ac
Average tons per acre harvested in cut-tree-marked units	—————→									0 tons/ac
Average MBF to cut per acre on the timber sale	—————→									7.4 MBF/ac
Range of cut trees per acre based on unit cruise	—————→									27-65 TPA
Calculated Sampling Error: Total cruised volume will fall between	2,476 and 3,296 Net MBF in 9 out of 10 cruises									14.2%
Tons Per Thousand Board Feet										
Contract Value - Estimated tons hauled per thousand Scribner board feet	17,673 estimated tons to a 5.6 inch top / 2,882 Net MBF Scribner to a 5.6 inch top DIB									6.13 tons/MBF

Contract Information	
Contract ending date	7/30/2014
Contract length	38 months
Operating Season:	December 1 - March 1

Timber Sale Information Sheet
Montana Department of Natural Resources and Conservation

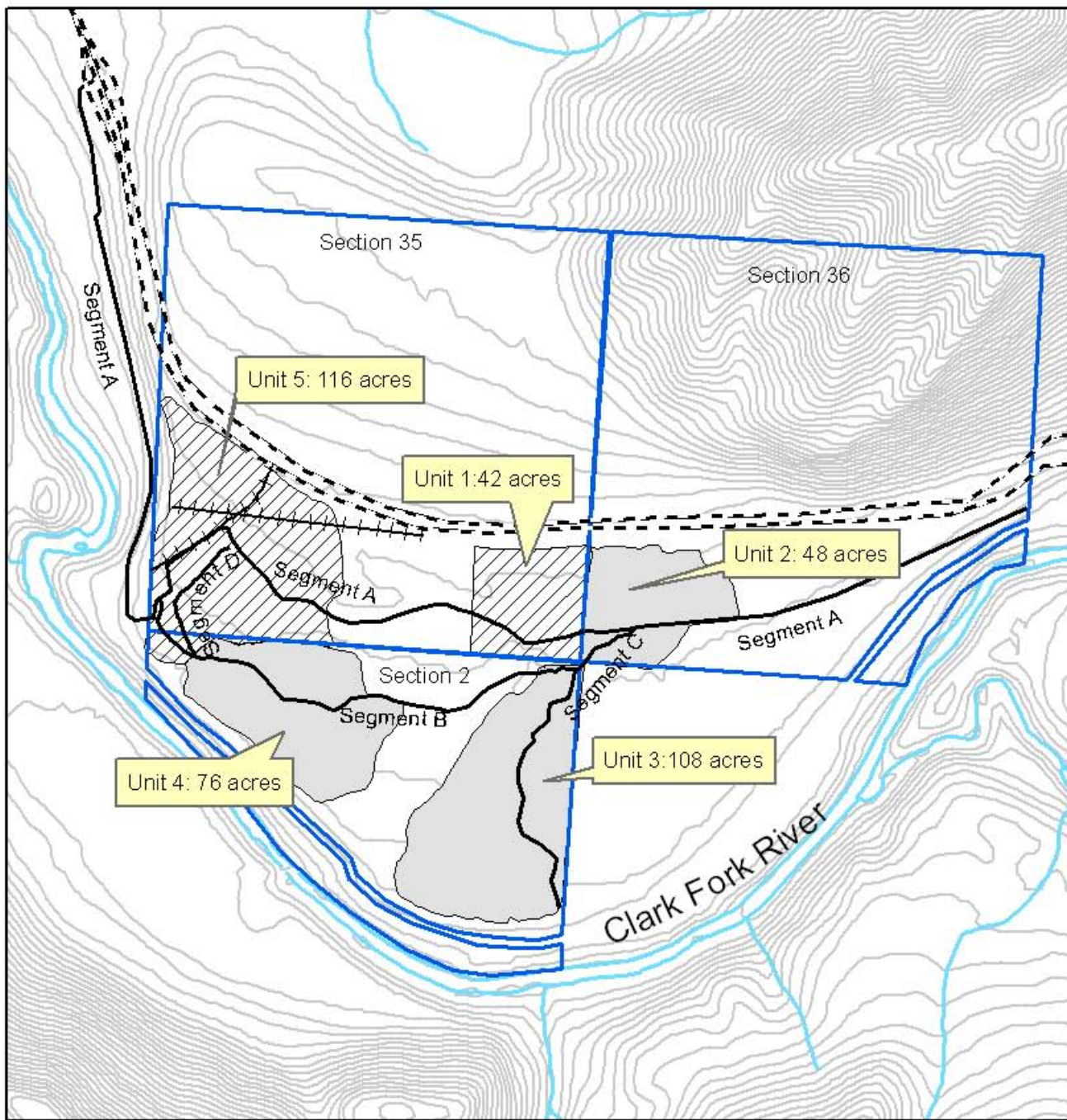
TARKIO TIMBER SALE

Legal description by trust					Unit harvest volume			
Legal description - subdivisions	Section	Twn	Rge	Grant	Unit #	Acres	Est Tons	Est MBF
SE4SE4_S2S2NE4SE4	35	15N	25W	CS	1	42	2,392	377
SW4SW4, SE4SW4	36	15N	25W	CS	2	48	1,795	303
LOTS 1,7,8, S2NE4	2	14N	25W	SNS	3	108	4,039	683
LOTS 3,4,6	2	14N	25W	SNS	4	76	2,842	480
SW4	35	15N	25W	SNS	5	116	6,605	1,039
See <u>Instructions</u> for how to fill in this table								
Totals						390 Ac.	17,673 T	2,882 M

Tarkio Timber Sale Harvest Units

Sections 35 and 36 T15N R25W

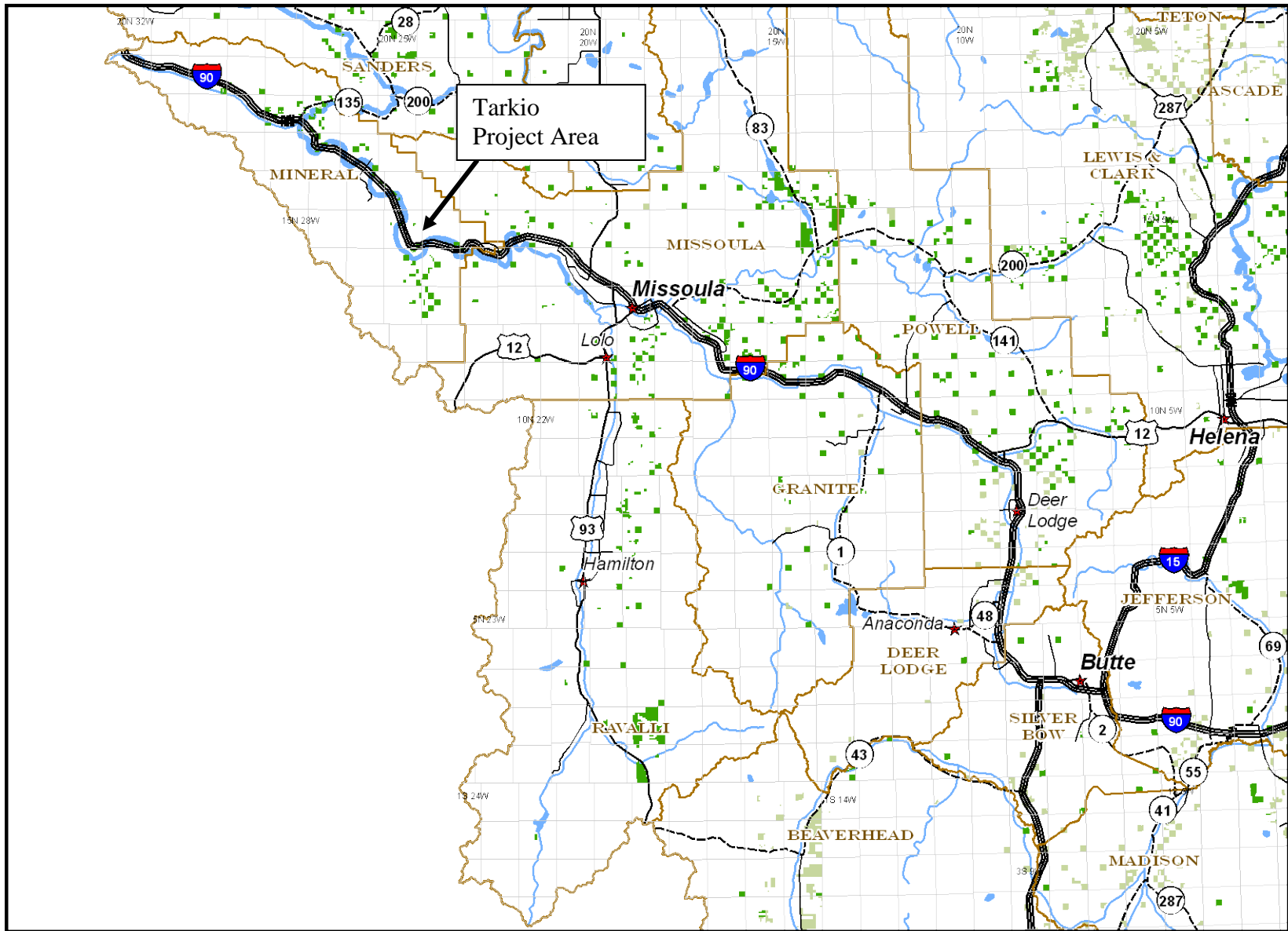
Section 2 T14N R25W



Legend

- +++ Power Lines
- - - I-90
- Tarkio haul route
- ▭ Tarkio School Trust Lands
- ▭ Individual Tree Selection
- ▨ Commercial Thin





	Interstate Highway		Rivers		Lakes
	U.S. Route		City		DNRC managed for timber
	State Highway		County		DNRC other
	Secondary Roads		Township/Range		

21 February 2007
 Montana DNRC
 Technical Services Section/dr

