

SPENCER LAKE SOUTH

NOTICE OF SALE

Department of Natural Resources & Conservation Timber Sale

The Spencer Lake South Timber Sale is located within Sections 9, 15, & 16, T30N-R22W on the State's Kalispell Unit. Approximately 15,948 tons, consisting primarily of Douglas-fir, spruce, and larch sawlogs is offered for sale.

Sealed bids will be opened at the Department of Natural Resources & Conservation, 2705 Spurgin Road, Missoula, Montana on **May 9, 2013 at 2:00 p.m.** Bids may be hand delivered or mailed and will be accepted any time prior to the bid opening. **DNRC recommends that bidders contact the Trust Land Management Division (406-542-4300) prior to the bid opening to ensure that your bid has been received.** Bids must be accompanied by a deposit of **\$12,734.00** representing 5% of the minimum bid value of the sale in cashier's check, certified check, bank money order or bank draft to be applied to the stumpage for the successful bidder. Bid bonds will be accepted and, for the successful bidder, will be closed upon execution of the Timber Sale Contract and Timber Sale Bond.

The sale will be awarded to the highest responsible bidder. If the successful bidder is unable to execute the contract within **45** calendar days from the date the sale is awarded, the bid deposit will be retained by the Department as liquidated damages. The right is reserved to reject any or all bids.

Prospective bidders can obtain the sale prospectus, sale contract and bid forms from the Department of Natural Resources & Conservation, Trust Land Management Division, in Missoula (406-542-4300), the Northwest Land Office (406-751-2257), or the Unit Office in Kalispell, MT (406-751-2263).

Visit our website at <http://www.dnrc.mt.gov/trust/timber/bids.asp> for upcoming sales and bid results.

/s/ SONYA GERMANN, Chief
Forest Management Bureau
Trust Land Mgmt Division

Publication Dates: April 10, 17, 24, May 1, 2013

TIMBER SALE PROSPECTUS
MONTANA DEPARTMENT OF NATURAL RESOURCES AND CONSERVATION

Timber Sale Name: Spencer Lake South			
Timber Sale Location: Sections 9, 15, 16, T30N-R22W			
For specific sale information, contact:			
Phone	406-751-2263	Greg Poncin	Kalispell Unit Office
For copies of the Timber Sale Contract and bid forms, contact:			
Phone	406-542-4300	Forest Management Bureau	DNRC Missoula Office
Phone	406-751-2257	Northwestern Land Office	

General Bidding Information

1. Bids must be submitted on standard Department of Natural Resources & Conservation (Dept) bid forms.
2. Timber will be sold to the highest responsible bidder; however, the Dept reserves the right to reject any or all bids.
3. The Dept recommends that bidders contact the Forest Management Bureau, Trust Land Management Division (406-542-4300) prior to the bid opening to ensure that your bid has been received.
4. A **Bid Guarantee** must accompany all bids and must be in the form of cash, cashiers check, certified check, money order, bank draft, surety bond or irrevocable letter of credit.
5. The Purchaser must submit a **Performance Bond** to the Dept within a maximum of 45 days of notification of sale award. The bond amount will be, at a minimum, 20% of the total bid value of the sale. The performance bond may be in the form of cash, irrevocable letter of credit, surety bond or certificate of deposit. The performance bond must be maintained separately from other payments for the duration of the sale contract. See the Timber Sale Contract for additional information.
6. The Purchaser must submit an **Advance Stumpage Payment** prior to cutting any timber. The amount of the advance stumpage payment will be based on the expected harvest rate and the bid value of the stumpage. The advance stumpage payment may be in the form of cash, irrevocable letter of credit, payment bond or certificate of deposit.
7. At rates specified in the Contract, the Purchaser will pay **Forest Improvement Fees** on all sawlog volume. All applicable **Road Use and/or Maintenance fees** will also be paid by the Purchaser in addition to stumpage payments.
8. This sale is being sold based on the gross weight of all species. Minimum price and bid price are on a per ton basis. Unless specified, the price applies to all species, green and dead. Price may vary by product. Billing will be based on gross weight. A weight ticket from a certified scale is required for each load hauled, regardless of product type.
9. The Dept has estimated the net scale merchantable sawlog volume to be available for purchase under this contract. Other products may be part of this sale. All delivered wood will be weighed and billed at per ton bid rates. The Dept recognizes that a percentage of delivered wood may not meet the log manufacturing and recovery standards of the timber sale contract. The actual percentage will vary based on the log manufacturing and recovery specifications of the purchaser and tree conditions in the sale area. The actual delivered weight may vary, resulting in an overrun or under-run of the estimated tonnage. The Dept strongly recommends that bidders evaluate these effects before bidding.
10. The Dept does not conduct detailed road appraisals. All appraised costs are gross estimates or averages, provided only to show the relative amount of work required, and not the true market value. The Dept strongly recommends that bidders make their own estimates based on contract requirements. Cost estimates provided are not guaranteed.
11. Bidders are encouraged to examine the complete Timber Sale Package and Sale Area prior to bidding. Additional information is available at the phone numbers shown above.
12. Estimates for sale volume, species percents, defect, product class, etc. provided in this prospectus and volume estimates listed in the sale contract are not guaranteed.
13. This prospectus is provided for information purposes only. If the prospectus is in error or contradicts the Timber Sale Contract, the contract governs.

Additional Sale Information:

1. **NONSAWLOG REMOVAL** – The Purchaser has the option of removing non-sawlog material if approved by the Forest Officer. This material would be billed at a negotiated rate as detailed in a contract amendment.
2. **RESTRICTED OPERATING PERIOD:** Logging activities must be conducted between November 1 and March 15, unless otherwise approved by the Forest Officer in writing.
3. **ROAD IMPROVEMENT AND MAINTENANCE:** To be completed between September 1 and October 31 on roads used for the winter harvest season.
4. **HIGH STANDARD SLASH REDUCTION:** Required along property boundaries and open roads.
5. **SLASHING OF LOGGING DAMAGED TREES REQUIRED:** The Purchaser shall fell all submerchantable trees with logging-related root or stem damage, causing lean. The stem shall be completely severed from the stump below the lowest live limb. Maximum stump height shall be 12 inches on the uphill side.

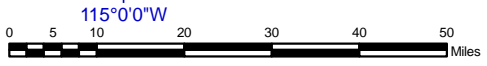
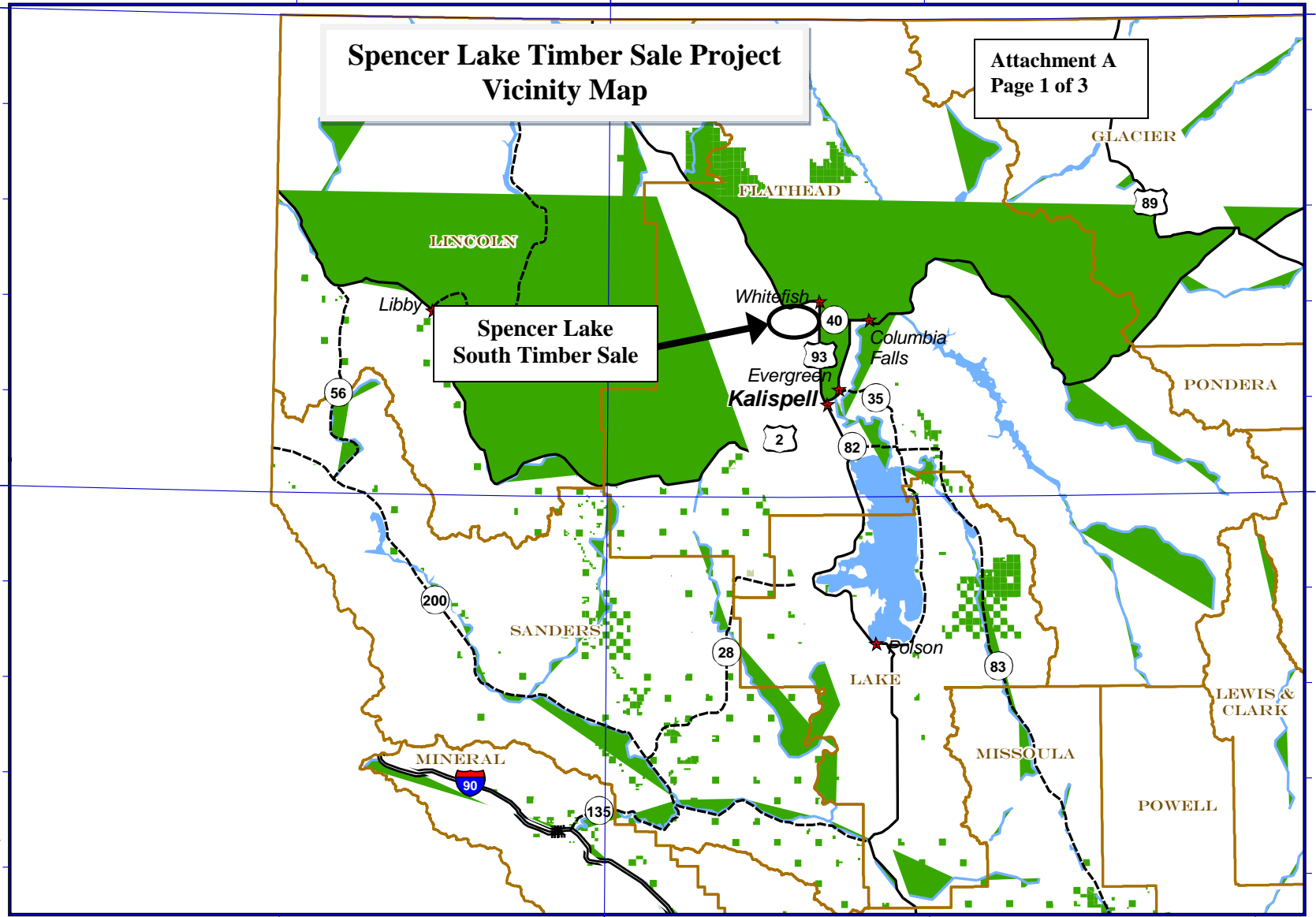
Timber Sale Information Sheet
Montana Department of Natural Resources and Conservation

SPENCER LAKE SOUTH											
Timber Sale Cruise Data											
SPECIES	PP	DF	WL	LP	ES	WF	CE	GF	Dead	TOTAL or AVE	
Minimum Bid										\$15.97/ton	
Pounds per cubic foot		62	58	56	57	60					
Estimated tons of sawlogs (5.6" top DIB)		14,501	420	80	886	61				15,948 tons	
Estimated tons of other material (pulp, etc)										0 tons	
Gross MBF (Scribner 5.6" top DIB)		2,355	66	13	138	10				2,582 MBF	
% Cull and Breakage		5	2	8	2	10				5.0%	
Net MBF (Scribner 5.6" top DIB)		2,231	65	12	136	9				2,453 MBF	
Average logs per MBF		24.9	34.4	36.7	18.8	20.7				27.1 logs/M	
Average DBH		11.2	9.5	8	13.1	14				11.2 in.	
Average tons per acre harvested in leave-tree marked units	→									0 tons/ac	
Average tons per acre harvested in cut-tree-marked units	→									23 tons/ac	
Average MBF to cut per acre on the timber sale	→									3.6 MBF/ac	
Range of cut trees per acre based on unit cruise	→									56	
Calculated Sampling Error: Total cruised volume will fall between	2,193 and 2,714 Net MBF in 9 out of 10 cruises									10.6%	
Tons Per Thousand Board Feet											
Contract Value - Estimated tons hauled per thousand Scribner board feet	15,948 estimated tons to a 5.6 inch top / 2,453 Net MBF Scribner to a 5.6 inch top DIB									6.50 tons/MBF	

Contract Information	
Contract ending date	11/1/2016
Contract length	40 months
Operating Season:	Winter Logging: November 1 thru March 15

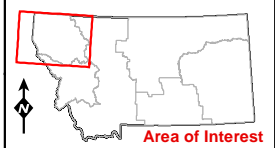
Spencer Lake Timber Sale Project Vicinity Map

Attachment A
Page 1 of 3



	Interstate Highway		Rivers		Lakes
	U.S. Route		City		DNRC managed for timber
	State Highway		County		DNRC other

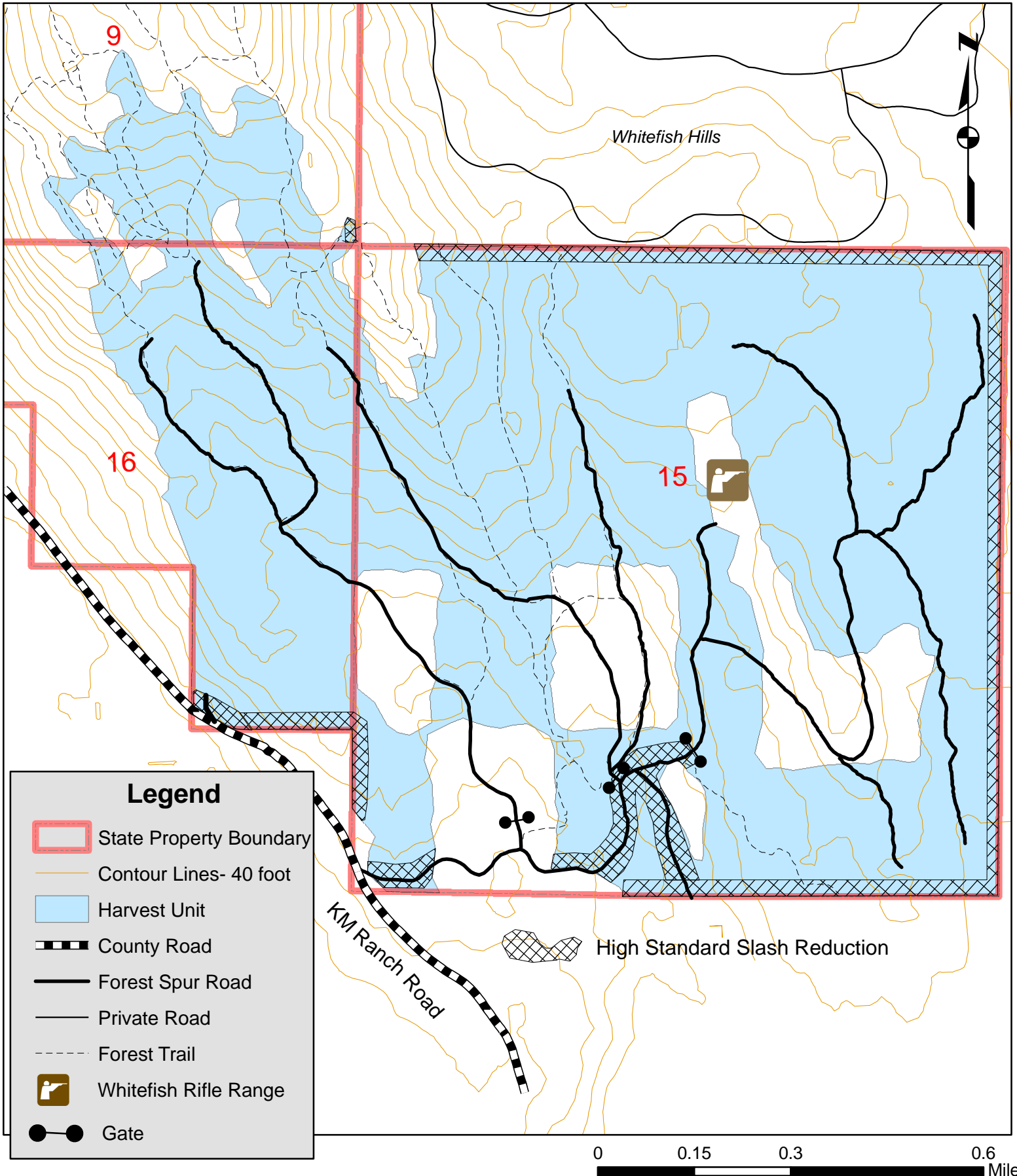
21 February 2007
Montana DNRC
Technical Services Section/dr





Spencer Lake South Timber Sale Harvest Unit Map

Sec. 9,15,16, T30N, R22W



Legend

- State Property Boundary
- Contour Lines- 40 foot
- Harvest Unit
- County Road
- Forest Spur Road
- Private Road
- Forest Trail
- Whitefish Rifle Range
- Gate

0 0.15 0.3 0.6 Miles



Spencer Lake South Timber Sale Designated Haul Route Map Sec. 9,15,16, T30N, R22W

