

SKYLES LAKE TIMBER SALE

NOTICE OF SALE

Department of Natural Resources & Conservation Timber Sale

The Skyles Lake Timber Sale is located within Section 33, T31N-R22W on the State's Kalispell Unit. Approximately 7,320 tons, consisting of Douglas-fir, cedar, and western larch sawlogs is offered for sale.

Sealed bids will be opened at the Department of Natural Resources & Conservation, 2705 Spurgin Road, Missoula, Montana on **June 26, 2009 at 2:00 p.m.** Bids may be hand delivered or mailed and will be accepted any time prior to the bid opening. **DNRC recommends that bidders contact the Trust Land Management Division (406-542-4300) prior to the bid opening to ensure that your bid has been received.** Bids must be accompanied by a deposit of **\$4,828.00**, representing 5% of the minimum bid value of the sale in cashier's check, certified check, bank money order or bank draft to be applied to the stumpage for the successful bidder. Bid bonds will be accepted and, for the successful bidder, will be closed upon execution of the Timber Sale Contract and Timber Sale Bond.

The sale will be awarded to the highest responsible bidder. **Award of the timber sale is conditional upon approval of the timber sale by the State Board of Land Commissioners at their June 23, 2009 meeting.** If the successful bidder is unable to execute the contract within 45 calendar days from the date the sale is awarded, the bid deposit will be retained by the Department as liquidated damages. The right is reserved to reject any or all bids.

Prospective bidders can obtain the sale prospectus, sale contract and bid forms from the Department of Natural Resources & Conservation, Trust Land Management Division, in Missoula (406-542-4300), the Northwestern Land Office, in Kalispell (406-751-2240), or the Kalispell Unit Office in Kalispell, MT (406-751-2266).

Visit our website at www.dnrc.mt.gov Online Services for upcoming sales and bid results.

/s/ SHAWN THOMAS, Chief
Forest Management Bureau
Trust Land Mgmt Division

Publication Dates: May 22, 29, June 5, 12, 2009

TIMBER SALE PROSPECTUS
MONTANA DEPARTMENT OF NATURAL RESOURCES AND CONSERVATION

Timber Sale Name: Skyles Lake			
Timber Sale Location: Section 33, T31N-R22W			
For specific sale information, contact:			
Phone	406-751-2266	Pete Seigmund	Unit Office: Kalispell
For copies of the Timber Sale Contract and bid forms, contact:			
Phone	406-542-4300	Forest Management Bureau	DNRC Missoula Office
Phone	406-751-2240	Northwestern Land Office	Land Office

General Bidding Information

1. Bids must be submitted on standard Department of Natural Resources & Conservation (Dept) bid forms.
2. Timber will be sold to the highest responsible bidder; however, the Dept reserves the right to reject any or all bids. **Award of the timber sale is conditional upon approval of the timber sale by the State Board of Land Commissioners at their June 23, 2009 meeting.**
3. The Dept recommends that bidders contact the Forest Management Bureau, Trust Land Management Division (406-542-4300) prior to the bid opening to ensure that your bid has been received.
4. A **Bid Guarantee** must accompany all bids and must be in the form of cash, cashiers check, certified check, money order, bank draft, surety bond or irrevocable letter of credit.
5. The Purchaser must submit a **Performance Bond** to the Dept within a maximum of 45 days of notification of sale award. The bond amount will be **\$10,000.00 minimum or 5% of the total bid value of the sale**, whichever is greater. The performance bond may be in the form of cash, irrevocable letter of credit, surety bond or certificate of deposit. The performance bond must be maintained separately from other payments for the duration of the sale contract. See the Timber Sale Contract for additional information.
6. The Purchaser must submit an **Advance Stumpage Payment** prior to cutting any timber. The amount of the advance stumpage payment will be based on the expected harvest rate and the bid value of the stumpage. The advance stumpage payment may be in the form of cash, irrevocable letter of credit, payment bond or certificate of deposit.
7. All applicable **Road Use and/or Maintenance fees** will also be paid by the Purchaser in addition to stumpage payments.
8. This sale is being sold based on the gross weight of all species. Minimum price and bid price are on a per ton basis. Unless specified, the price applies to all species, green and dead. Price may vary by product. Billing will be based on gross weight. A weight ticket from a certified scale is required for each load hauled, regardless of product type.
9. The Dept has estimated the net scale merchantable sawlog volume to be available for purchase under this contract. Other products may be part of this sale. All delivered wood will be weighed and billed at per ton bid rates. The Dept recognizes that a percentage of delivered wood may not meet the log manufacturing and recovery standards of the timber sale contract. The actual percentage will vary based on the log manufacturing and recovery specifications of the purchaser and tree conditions in the sale area. The actual delivered weight may vary, resulting in an overrun or under-run of the estimated tonnage. The Dept strongly recommends that bidders evaluate these effects before bidding.
10. The Dept does not conduct detailed road appraisals. All appraised costs are gross estimates or averages, provided only to show the relative amount of work required, and not the true market value. The Dept strongly recommends that bidders make their own estimates based on contract requirements. Cost estimates provided are not guaranteed.
11. Bidders are encouraged to examine the complete Timber Sale Package and Sale Area prior to bidding. Additional information is available at the phone numbers shown above.
12. Estimates for sale volume, species percents, defect, product class, etc. provided in this prospectus and volume estimates listed in the sale contract are not guaranteed.
13. This prospectus is provided for information purposes only. If the prospectus is in error or contradicts the Timber Sale Contract, the contract governs.

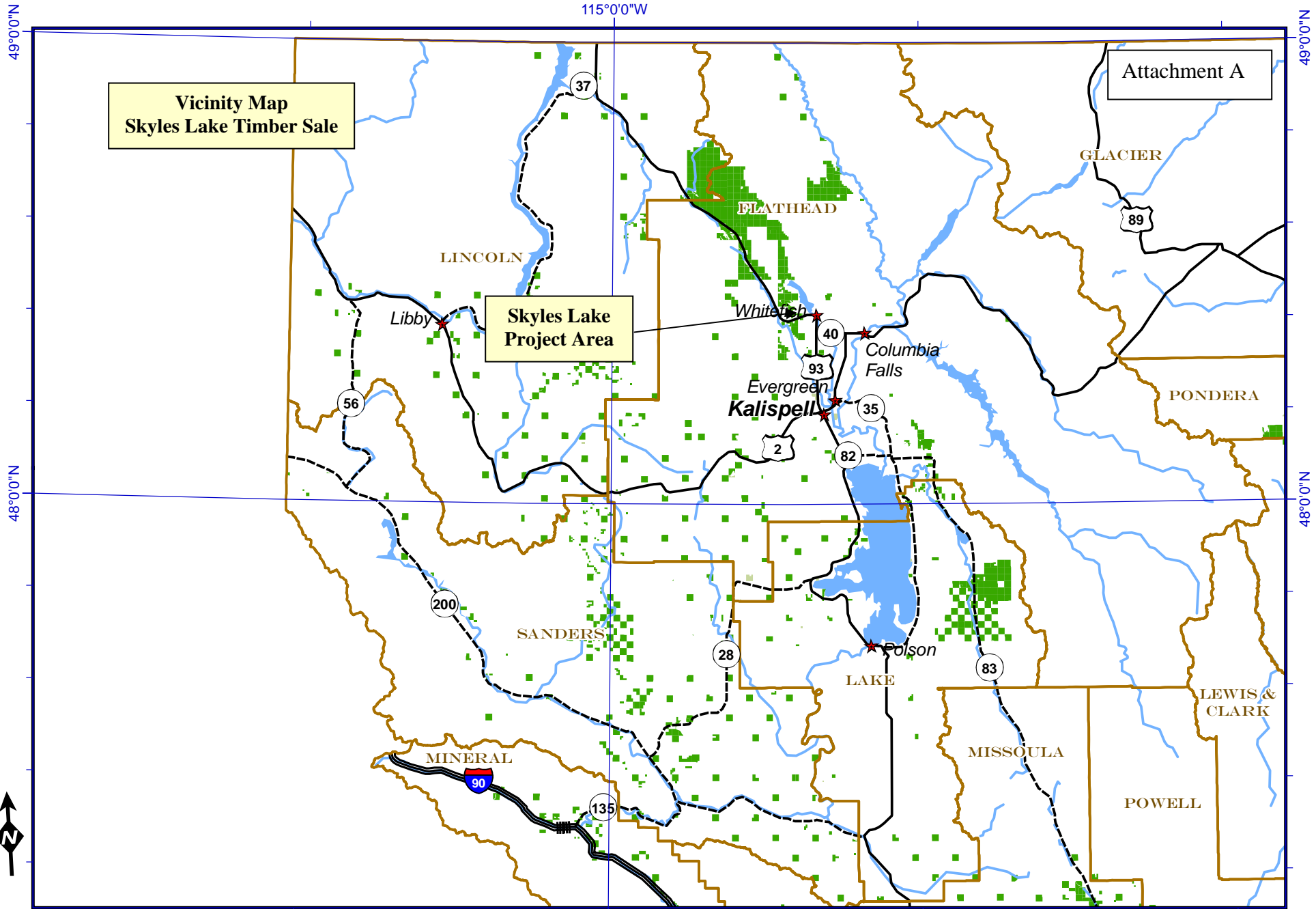
Additional Sale Information:

1. Winter logging is required in Unit 2.

Timber Sale Information Sheet
Montana Department of Natural Resources and Conservation

Timber Sale Cruise Data										
SPECIES	PP	DF	WL	LP	ES	WF	CE	WP	Dead	TOTAL or AVE
Minimum Bid										\$13.19/ton
Pounds per cubic foot	62.0	61.7	58.3	56.0	57.0	55.0	40.0			
Estimated tons of sawlogs (5.6" top DIB)	42	6,394	216	188	228	151	101			7,320 tons
Estimated tons of other material (pulp, etc)										0 tons
Gross MBF (Scribner 5.6" top DIB)	7	1,061	34	25	38	23	63			1,251 MBF
% Cull and Breakage	0	12	10	10	3	1	30			13.9%
Net MBF (Scribner 5.6" top DIB)	6	938.0	31.0	23.0	37.0	23.0	19.0			1,077 MBF
Average logs per MBF	6.7	20.4	56.2	114.4	31.9	30.1	58.5			24.5 logs/M
Average DBH	17.0	13.3	9.8	8.1	11	11.4	12			12.5 in.
Average tons per acre harvested in leave-tree marked units	→									52 tons/ac
Average tons per acre harvested in cut-tree-marked units	→									27 tons/ac
Average MBF to cut per acre on the timber sale	→									6.1 MBF/ac
Range of cut trees per acre based on unit cruise	→									56-81
Calculated Sampling Error: Total cruised volume will fall between	6,712 and 7,926 Net MBF in 9 out of 10 cruises									8.3%
Tons Per Thousand Board Feet										
Contract Value - Estimated tons hauled per thousand Scribner board feet	7,320 estimated tons to a 5.6 inch top / 1,077 Net MBF Scribner to a 5.6 inch top DIB									6.80 tons/MBF

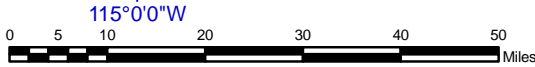
Contract Information	
Contract ending date	9/1/2011
Contract length	27 months
Operating Season:	Unit 1 - When soil conditions are dry, frozen or snow covered. Unit 2 - winter logging required (see contract spec.s)



Vicinity Map
Skyles Lake Timber Sale

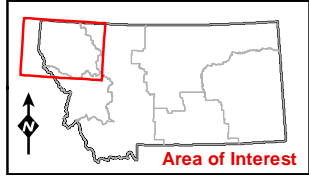
Skyles Lake
Project Area

Attachment A

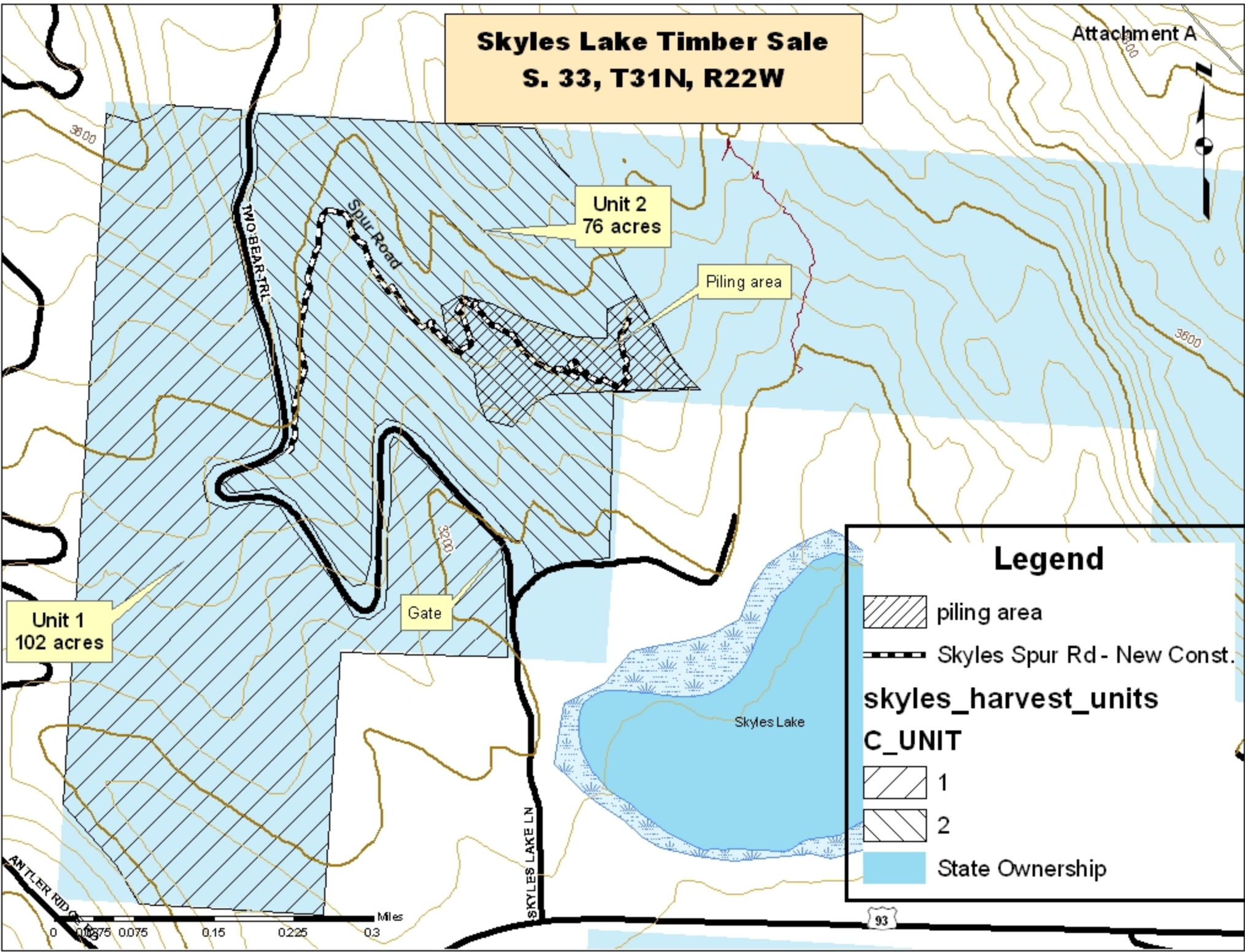


	Interstate Highway		Rivers		Lakes
	U.S. Route		City		DNRC managed for timber
	State Highway		County		DNRC other

21 February 2007
Montana DNRC
Technical Services Section/dr



Skyles Lake Timber Sale S. 33, T31N, R22W





Unit 1
102 acres

Unit 2
76 acres

Piling area


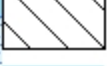

Gate

Legend

-  piling area
-  Skyles Spur Rd - New Const.

skyles_harvest_units

C_UNIT

-  1
-  2
-  State Ownership

0 0.0625 0.075 0.15 0.225 0.3 Miles

93