

REID DIVIDE TIMBER SALE

NOTICE OF SALE

Department of Natural Resources & Conservation Timber Sale

The Reid Divide Timber Sale is located within Section 36, T30N-R24W on the State's Kalispell Unit. Approximately 27,497 tons, consisting primarily of Douglas-fir, spruce, alpine fir, and western larch sawlogs is offered for sale.

Sealed bids will be opened at the Department of Natural Resources & Conservation, 2705 Spurgin Road, Missoula, Montana on **June 28, 2012 at 2:00 p.m.** Bids may be hand delivered or mailed and will be accepted any time prior to the bid opening. **DNRC recommends that bidders contact the Trust Land Management Division (406-542-4300) prior to the bid opening to ensure that your bid has been received.** Bids must be accompanied by a deposit of **\$20,444.00** representing 5% of the minimum bid value of the sale in cashier's check, certified check, bank money order or bank draft to be applied to the stumpage for the successful bidder. Bid bonds will be accepted and, for the successful bidder, will be closed upon execution of the Timber Sale Contract and Timber Sale Bond.

The sale will be awarded to the highest responsible bidder. If the successful bidder is unable to execute the contract within **30** calendar days from the date the sale is awarded, the bid deposit will be retained by the Department as liquidated damages. The right is reserved to reject any or all bids.

Prospective bidders can obtain the sale prospectus, sale contract and bid forms from the Department of Natural Resources & Conservation, Trust Land Management Division, in Missoula (406-542-4300), the Northwest Land Office in Kalispell (406-752-2257), or the Kalispell Unit Office in Kalispell, MT (406-751-2266).

Visit our website at <http://www.dnrc.mt.gov/trust/timber/bids.asp> for upcoming sales and bid results.

/s/ SONYA GERMANN, Chief
Forest Management Bureau
Trust Land Mgmt Division

Publication Dates: May 30, June 6, 13, 20, 2012

TIMBER SALE PROSPECTUS
MONTANA DEPARTMENT OF NATURAL RESOURCES AND CONSERVATION

Timber Sale Name: Reid Divide			
Timber Sale Location: Section 36, T30N-R24W			
For specific sale information, contact: Pete Seigmund			
Phone	406-751-2266	Kalispell Unit Office	
For copies of the Timber Sale Contract and bid forms, contact:			
Phone	406-542-4300	Forest Management Bureau	DNRC Missoula Office
Phone	406-751-2240	Northwestern Land Office	

General Bidding Information

1. Bids must be submitted on standard Department of Natural Resources & Conservation (Dept) bid forms.
2. Timber will be sold to the highest responsible bidder; however, the Dept reserves the right to reject any or all bids.
3. The Dept recommends that bidders contact the Forest Management Bureau, Trust Land Management Division (406-542-4300) prior to the bid opening to ensure that your bid has been received.
4. A **Bid Guarantee** must accompany all bids and must be in the form of cash, cashiers check, certified check, money order, bank draft, surety bond or irrevocable letter of credit.
5. The Purchaser must submit a **Performance Bond** to the Dept within a maximum of 30 days of notification of sale award. The bond amount will be, at a minimum of **15%** of the total bid value of the sale. The performance bond may be in the form of cash, irrevocable letter of credit, surety bond or certificate of deposit. The performance bond must be maintained separately from other payments for the duration of the sale contract. See the Timber Sale Contract for additional information.
6. The Purchaser must submit an **Advance Stumpage Payment** prior to cutting any timber. The amount of the advance stumpage payment will be based on the expected harvest rate and the bid value of the stumpage. The advance stumpage payment may be in the form of cash, irrevocable letter of credit, payment bond or certificate of deposit.
7. This sale is being sold based on the gross weight of all species. Minimum price and bid price are on a per ton basis. Unless specified, the price applies to all species, green and dead. Price may vary by product. Billing will be based on gross weight. A weight ticket from a certified scale is required for each load hauled, regardless of product type.
8. The Dept has estimated the net scale merchantable sawlog volume to be available for purchase under this contract. Other products may be part of this sale. All delivered wood will be weighed and billed at per ton bid rates. The Dept recognizes that a percentage of delivered wood may not meet the log manufacturing and recovery standards of the timber sale contract. The actual percentage will vary based on the log manufacturing and recovery specifications of the purchaser and tree conditions in the sale area. The actual delivered weight may vary, resulting in an overrun or under-run of the estimated tonnage. The Dept strongly recommends that bidders evaluate these effects before bidding.
9. The Dept does not conduct detailed road appraisals. All appraised costs are gross estimates or averages, provided only to show the relative amount of work required, and not the true market value. The Dept strongly recommends that bidders make their own estimates based on contract requirements. Cost estimates provided are not guaranteed.
10. Bidders are encouraged to examine the complete Timber Sale Package and Sale Area prior to bidding. Additional information is available at the phone numbers shown above.
11. Estimates for sale volume, species percents, defect, product class, etc. provided in this prospectus and volume estimates listed in the sale contract are not guaranteed.
12. The Timber Sale Information Sheet is included as part of this prospectus.
13. This prospectus is provided for information purposes only. If the prospectus is in error or contradicts the Timber Sale Contract, the contract governs.

Additional Sale Information:

14. **NON-SAWLOG AND BIOMASS REMOVAL** – The Purchaser has the option of removing non-sawlog material at the rate of \$1.00/ton.
15. **FELLING OF OVERSIZED TREES:** The Purchaser is required to minimize logging damage to larger diameter trees (over 30 inches in diameter on the stump) during felling operations. This includes hand felling if mechanical felling is causing excessive damage or stump heights greater than 12 inches.
16. **HOT DECKING IS REQUIRED TO REDUCE LANDING SIZE:** Due to limited landing size, the Purchaser is required to keep hauling concurrent with skidding and decking. The Purchaser is required to keep roads passable if practicable when no logging operations are active.
17. **TRAIL PROTECTION:** A motorized use/hiking trail passes through the southeast corner of the harvest unit #2. The Purchaser will be required to take reasonable measures to limit any damage to the trail tread and keep the trail free from logging slash.
18. **RESTRICTED OPERATING PERIOD:** No timber sale activities may occur from April 1 to June 15. This includes all activities associated with timber harvest, road work, post harvest clean-up, and other contract requirements. **This restriction applies to Units 3 and 4 only.**
19. **SLASHING OF LOGGING DAMAGED TREES REQUIRED:** The Purchaser shall fell all submerchantable trees with logging-related root or stem damage, causing lean. The stem shall be completely severed from the stump below the lowest live limb. Maximum stump height shall be 12 inches on the uphill side.

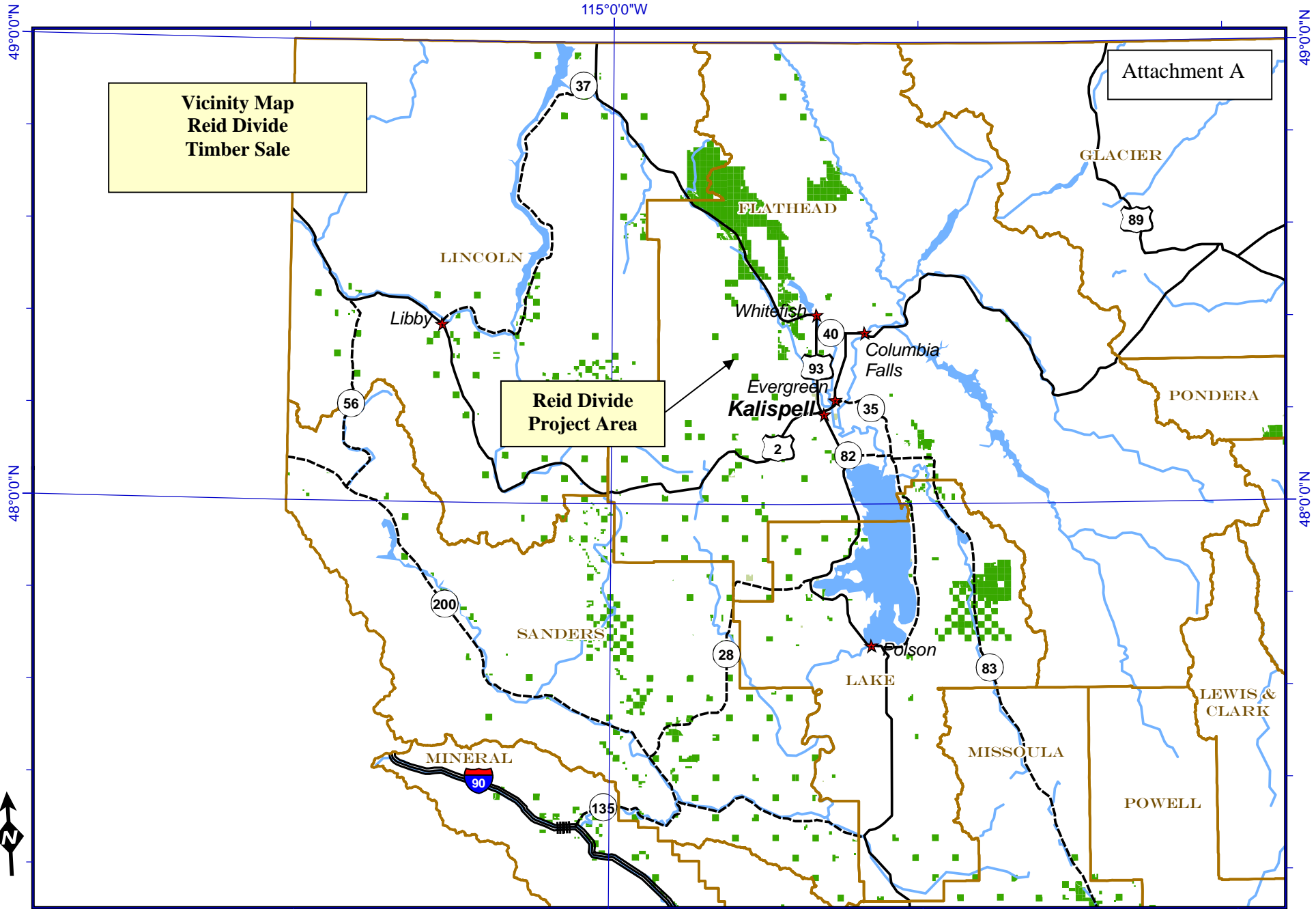
Timber Sale Information Sheet
Montana Department of Natural Resources and Conservation

Reid Divide Timber Sale										
Timber Sale Cruise Data										
SPECIES	AF	DF	WL	LP	ES	WF	CE	WP	Dead	TOTAL or AVE
Minimum Bid										\$14.87/ton
Pounds per cubic foot	55.0	61.7	58.3	56.0	57.0				40.0	
Estimated tons of sawlogs (5.6" top DIB)	5,683.50	11888.6	2565.1	646.7	5818.2				895.1	27,497 tons
Estimated tons of other material (pulp, etc)										0 tons
Gross MBF (Scribner 5.6" top DIB)	848.9	1,972.5	489.4	103.6	1,131.7				419.0	4,965 MBF
% Cull and Breakage	2	3	2	12	1				51	6.6%
Net MBF (Scribner 5.6" top DIB)	831.3	1,917.5	479.0	91.4	1,115.9				204.4	4,640 MBF
Average logs per MBF	28.9	12.6	12.5	30.1	11.4				27.7	16.2 logs/M
Average DBH	8.8	16.1	15.1	9.3	13.9				13.2	12.0 in.
Average tons per acre harvested in leave-tree marked units	→									95 tons/ac
Average tons per acre harvested in cut-tree-marked units	→									0 tons/ac
Average MBF to cut per acre on the timber sale	→									16.0 MBF/ac
Range of cut trees per acre based on unit cruise	→									105 to 170
Calculated Sampling Error: Total cruised volume will fall between	5,160 and 4,111 Net MBF in 9 out of 10 cruises									11.2%
Tons Per Thousand Board Feet										
Contract Value - Estimated tons hauled per thousand Scribner board feet	27,497 estimated tons to a 5.6 inch top / 4,640 Net MBF Scribner to a 5.6 inch top DIB									5.93 tons/MBF

Contract Information	
Contract ending date	10/31/2014
Contract length	28 months
Operating Season:	When soil conditions are dry, frozen or snow covered.

Timber Sale Information Sheet
Montana Department of Natural Resources and Conservation

Legal description by trust					Unit harvest volume			
Legal description - subdivisions	Section	Twn	Rge	Grant	Unit #	Acres	Est Tons	Est MBF
all	36	30N	24W	C.S.	1	59	5,356	809
					2	161	15,847	2,752
					3	38	3,129	558
					4	32	3,166	521
See <u>Instructions</u> for how to fill in this table								
Totals						290 Ac.	27,498 T	4,640 M



Vicinity Map
Reid Divide
Timber Sale

Attachment A

Reid Divide
Project Area



	Interstate Highway		Rivers		Lakes
	U.S. Route		City		DNRC managed for timber
	State Highway		County		DNRC other

21 February 2007
Montana DNRC
Technical Services Section/dr

