

NOTICE OF SALE

Department of Natural Resources & Conservation Timber Sale

The Mistle Dog Timber Sale is located within Sections 19 & 20, T33N-R23W on the State's Stillwater Unit. Approximately 2,708 tons, consisting primarily of western larch, cedar, white fir, and Engelmann spruce sawlogs are offered for sale.

Sealed bids will be opened at the Department of Natural Resources & Conservation, 2705 Spurgin Road, Missoula, Montana on **September 5, 2013 at 2:00 p.m.** Bids may be hand delivered or mailed and will be accepted any time prior to the bid opening. **DNRC recommends that bidders contact the Trust Land Management Division (406-542-4300) prior to the bid opening to ensure that your bid has been received.** Bids must be accompanied by a deposit of **\$4,712.00**, representing 5% of the minimum bid value of the sale in cashier's check, certified check, bank money order or bank draft to be applied to the stumpage for the successful bidder. Bid bonds will be accepted and, for the successful bidder, will be closed upon execution of the Timber Sale Contract and Timber Sale Bond.

The sale will be awarded to the highest responsible bidder. If the successful bidder is unable to execute the contract within **30** calendar days from the date the sale is awarded, the bid deposit will be retained by the Department as liquidated damages. The right is reserved to reject any or all bids.

Prospective bidders can obtain the sale prospectus, sale contract and bid forms from the Department of Natural Resources & Conservation, Trust Land Management Division, in Missoula (406-542-4300), the Northwestern Land Office, in Kalispell (406-751-2257), or the Stillwater Unit Office in Olney, MT (406-881-2673).

Visit our website at <http://www.dnrc.mt.gov/trust/timber/bids.asp> for upcoming sales and bid results.

/s/ Sonya Germann, Chief
Forest Management Bureau
Trust Land Mgmt Division

Publication Dates: August 7, 14, 21, 28, 2013

TIMBER SALE PROSPECTUS
MONTANA DEPARTMENT OF NATURAL RESOURCES AND CONSERVATION

Timber Sale Name:	Mistle Dog		
Timber Sale Location:	Sections 19 & 20, T33N-R23W		
For specific sale information, contact: Zack Miller			
Phone	406-881-2673	Stillwater Unit Office	
For copies of the Timber Sale Contract and bid forms, contact:			
Phone	406-542-4300	Forest Management Bureau	DNRC Missoula Office
Phone	406-751-2257	Bill Pursell	Northwest Land Office

General Bidding Information

1. Bids must be submitted on standard Department of Natural Resources & Conservation (Dept) bid forms.
2. Timber will be sold to the highest responsible bidder; however, the Dept reserves the right to reject any or all bids.
3. The Dept recommends that bidders contact the Forest Management Bureau, Trust Land Management Division (542-4300) prior to the bid opening to ensure that your bid has been received.
4. A **Bid Guarantee** must accompany all bids and must be in the form of cash, cashier's check, certified check, money order, bank draft, surety bond or irrevocable letter of credit.
5. The Purchaser must submit a **Performance Bond** to the Dept within a maximum of 45 days of notification of sale award. The bond amount will be, at a minimum, 20% of the total bid value of the sale. The performance bond may be in the form of cash, irrevocable letter of credit, surety bond or certificate of deposit. The performance bond must be maintained separately from other payments for the duration of the sale contract. See the Timber Sale Contract for additional information.
6. The purchaser must submit an **Advance Stumpage Payment** prior to cutting any timber. The amount of the advance stumpage payment will be based on the expected harvest rate and the bid value of the stumpage. The advance stumpage payment may be in the form of cash, irrevocable letter of credit, payment bond or certificate of deposit.
7. At rates specified in the Contract, the purchaser will pay **Forest Improvement Fees** on all sawlog volume. All applicable **Road Use and/or Maintenance fees** will also be paid by the Purchaser in addition to stumpage payments.
8. This sale is being sold based on the gross weight of all species. Minimum price and bid price are on a per ton basis. Unless specified, the price applies to all species, green and dead. Price may vary by product. Billing will be based on gross weight. A weight ticket from a certified scale is required for each load hauled, regardless of product type.
9. The Dept has estimated the net scale merchantable sawlog volume to be available for purchase under this contract. Other products may be part of this sale. All delivered wood will be weighed and billed at per ton bid rates. The Dept recognizes that a percentage of delivered wood may not meet the log manufacturing and recovery standards of the timber sale contract. The actual percentage will vary based on the log manufacturing and recovery specifications of the purchaser and tree conditions in the sale area. The actual delivered weight may vary, resulting in an overrun or under-run of the estimated tonnage. The Dept strongly recommends that bidders evaluate these effects before bidding.
10. The Dept does not conduct detailed road appraisals. All appraised costs are gross estimates or averages, provided only to show the relative amount of work required, and not the true market value. The Dept strongly recommends that bidders make their own estimates based on contract requirements. Cost estimates provided are not guaranteed.
11. Bidders are encouraged to examine the complete Timber Sale Package and Sale Area prior to bidding. Additional information is available at the phone numbers shown above.
12. Estimates for sale volume, species percents, defect, product class, etc. provided in this prospectus and volume estimates listed in the sale contract are not guaranteed.
13. This prospectus is provided for information purposes only. If the prospectus is in error or contradicts the Timber Sale Contract, the contract governs.

Additional Sale Information:

1. The Purchaser will slash all non-merchantable material, including leaners and pushovers, taller than 18 inches after harvesting operations in this unit are completed and approved. Cull trees and snags do not have to be slashed. Stems shall be completely severed from the stumps. Stumps shall not exceed 8 inches in height on the uphill side. Slashed material must be felled directionally to remain within the harvest unit. Slashing is not allowed in the SMZ's.
2. Non-sawlog material may be purchased if approved by the Forest Officer. This material would be billed at a negotiated rate as detailed in a contract amendment.
3. Operating Period is between June 16 and March 31. No operations can occur between April 1 and June 15.

Timber Sale Information Sheet
Montana Department of Natural Resources and Conservation

Mistle Dog Timber Sale										
Timber Sale Cruise Data										
SPECIES	PP	DF	WL	LP	ES	WF	CE	WP	Dead	TOTAL or AVE
Minimum Bid										\$34.80/ton
Pounds per cubic foot		62	58	56	57	57	44.0	60.0		
Estimated tons of sawlogs (5.6" top DIB)		83	1,646	68	124	290	475	23		2,708 tons
Estimated tons of other material (pulp, etc)										0 tons
Gross MBF (Scribner 5.6" top DIB)		18	379	13	23	49	113	21		615 MBF
% Cull and Breakage		18	15	20	11	10	24	85		18.8%
Net MBF (Scribner 5.6" top DIB)		15	323	11	20	44	85	3		499 MBF
Average logs per MBF		14	12	33	25	33	33	36		18.5 logs/M
Average DBH		19	18	9	11	9	12	12		15.7 in.
Average tons per acre harvested in leave-tree marked units	→									75 tons/ac
Average tons per acre harvested in cut-tree-marked units	→									90 tons/ac
Average MBF to cut per acre on the timber sale	→									13.5 MBF/ac
Range of cut trees per acre based on unit cruise	→									15
Calculated Sampling Error: Total cruised volume will fall between	430 and 575 Net MBF in 9 out of 10 cruises									14.7%
Tons Per Thousand Board Feet										
Contract Value - Estimated tons hauled per thousand Scribner board feet	2,708 estimated tons to a 5.6 inch top / 499 Net MBF Scribner to a 5.6 inch top DIB									5.42 tons/MBF

Contract Information	
Contract ending date	October 15,2014
Contract length	13 Months
Operating Season:	June 16 through March 31 and when soil restrictions are met

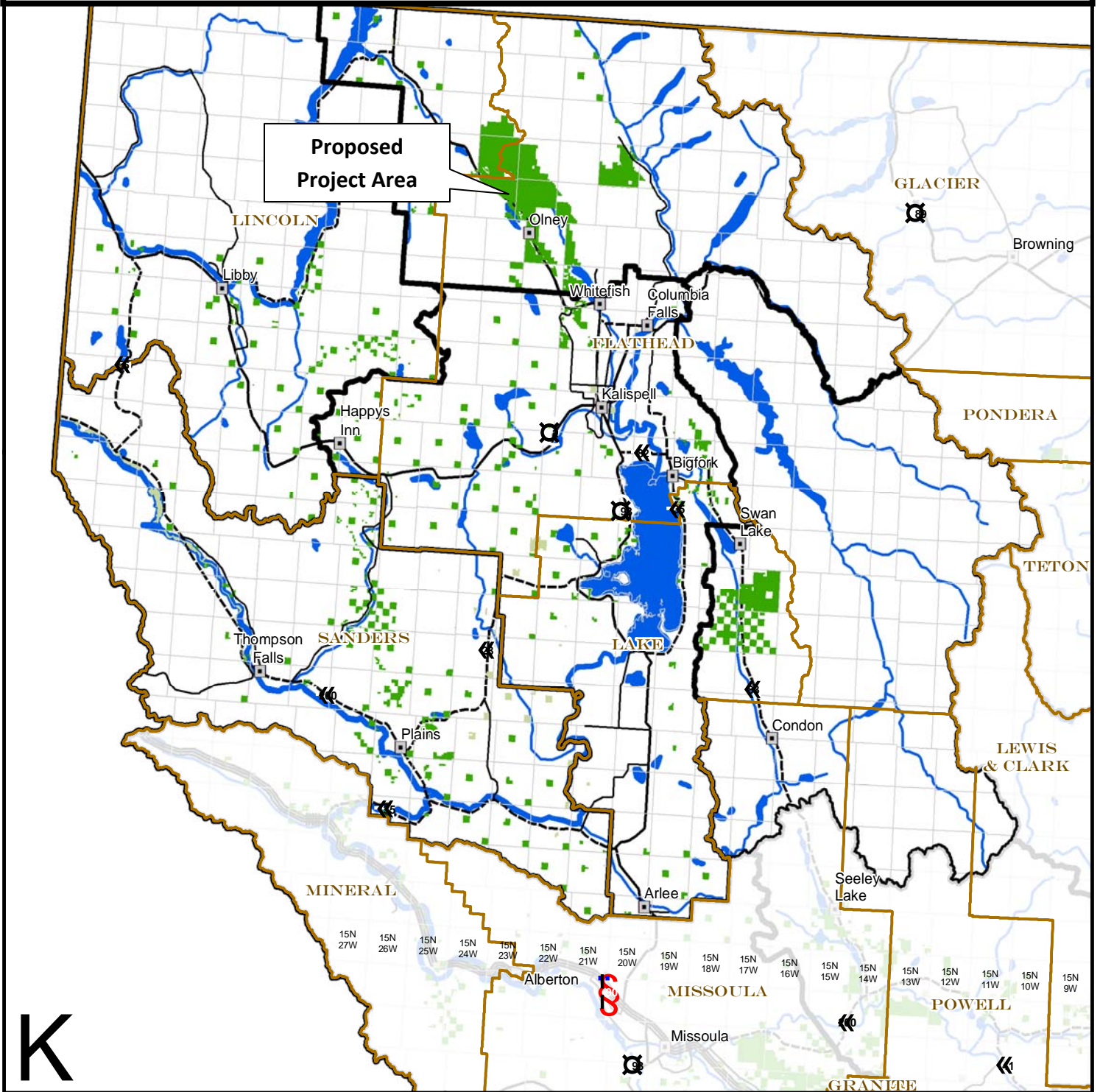
Mistle Dog Timber Sale Vicinity Map

Sections 19 & 20, T33N R23W

Flathead County

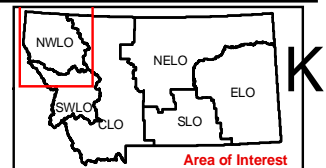
DNRC – Stillwater Unit, Olney, Montana

Att. A 1 of 2



K

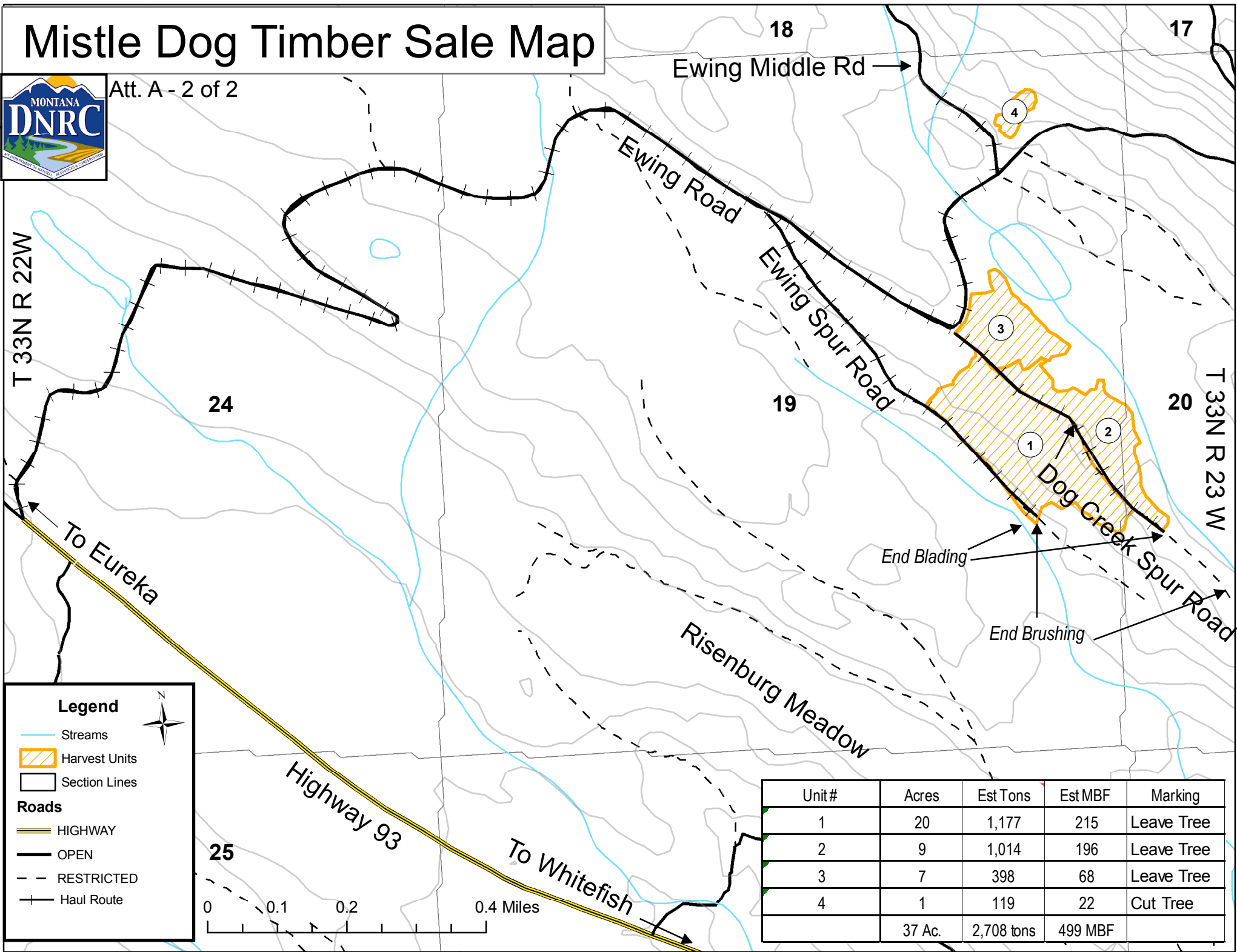
	Interstate Highway		County		City
	U.S. Route		DNRC other		Township/Range
	State Highway		DNRC managed for timber		Management Unit
	Secondary Roads				



Mistle Dog Timber Sale Map



Att. A - 2 of 2



Unit#	Acres	Est Tons	Est MBF	Marking
1	20	1,177	215	Leave Tree
2	9	1,014	196	Leave Tree
3	7	398	68	Leave Tree
4	1	119	22	Cut Tree
	37 Ac.	2,708 tons	499 MBF	