

FISH BULL FACE TIMBER SALE

NOTICE OF SALE

Department of Natural Resources & Conservation Timber Sale

The Fish Bull Face Timber Sale is located within Sections 19, 20, 29, 30, 32, 33, & 34, T34N-R24W, and Sections 3 & 4, T33N-R24W on the State's Stillwater Unit. Approximately 10,783 tons, consisting primarily of western larch, lodgepole pine, Douglas-fir, and white fir sawlogs is offered for sale.

Sealed bids will be opened at the Department of Natural Resources & Conservation, 2705 Spurgin Road, Missoula, Montana on **September 25, 2012 at 2:00 p.m.** Bids may be hand delivered or mailed and will be accepted any time prior to the bid opening. **DNRC recommends that bidders contact the Trust Land Management Division (406-542-4300) prior to the bid opening to ensure that your bid has been received.** Bids must be accompanied by a deposit of **\$820.00**, representing 5% of the minimum bid value of the sale in cashier's check, certified check, bank money order or bank draft to be applied to the stumpage for the successful bidder. Bid bonds will be accepted and, for the successful bidder, will be closed upon execution of the Timber Sale Contract and Timber Sale Bond.

The sale will be awarded to the highest responsible bidder. If the successful bidder is unable to execute the contract within **45** calendar days from the date the sale is awarded, the bid deposit will be retained by the Department as liquidated damages. The right is reserved to reject any or all bids.

Prospective bidders can obtain the sale prospectus, sale contract and bid forms from the Department of Natural Resources & Conservation, Trust Land Management Division, in Missoula (406-542-4300), the Northwestern Land Office, in Kalispell (406-751-2257), or the Stillwater Unit Office in Olney, MT (406-881-2371).

Visit our website at <http://www.dnrc.mt.gov/trust/timber/bids.asp> for upcoming sales and bid results.

/s/ SONYA GERMANN, Chief
Forest Management Bureau
Trust Land Mgmt Division

Publication Dates: August 24, 31, September 7, 14, 2012

TIMBER SALE PROSPECTUS
MONTANA DEPARTMENT OF NATURAL RESOURCES AND CONSERVATION

Timber Sale Name:	Fish Bull Face		
Timber Sale Location:	Sections 19, 20, 29, 30, 32, 33 & 34, T34N-R24W; and Sections 3 & 4, T33N-R24W		
For specific sale information, contact: Mike McMahon			
Phone	406-881-2371	Stillwater Unit Office	
For copies of the Timber Sale Contract and bid forms, contact:			
Phone	406-542-4300	Forest Management Bureau	DNRC Missoula Office
Phone	406-751-2257	Northwest	Land Office

General Bidding Information

1. Bids must be submitted on standard Department of Natural Resources & Conservation (Dept) bid forms.
2. Timber will be sold to the highest responsible bidder; however, the Dept reserves the right to reject any or all bids.
3. The Dept recommends that bidders contact the Forest Management Bureau, Trust Land Management Division (406) 542-4300 prior to the bid opening to ensure that your bid has been received.
4. A **Bid Guarantee** must accompany all bids and must be in the form of cash, cashiers check, certified check, money order, bank draft, surety bond or irrevocable letter of credit.
5. The Purchaser must submit a **Performance Bond** to the Dept within a maximum of 45 days of notification of sale award. The bond amount will be **\$20,000.00**. The performance bond may be in the form of cash, irrevocable letter of credit, surety bond or certificate of deposit. A letter of credit must be automatically renewable without amendment for the term of the Contract. The performance bond must be maintained separately from other payments for the duration of the sale contract. See the Timber Sale Contract for additional information.
6. The Purchaser must submit an **Advance Stumpage Payment** prior to cutting any timber. The amount of the advance stumpage payment will be based on the expected harvest rate and the bid value of the stumpage. The advance stumpage payment may be in the form of cash, irrevocable letter of credit, payment bond or certificate of deposit.
7. At rates specified in the Contract, the Purchaser will pay **Forest Improvement Fees** on all sawlog volume. All applicable **Road Use and/or Maintenance fees** will also be paid by the Purchaser in addition to stumpage payments.
8. This sale is being sold based on the gross weight of all species. Minimum price and bid price are on a per ton basis. Unless specified, the price applies to all species, green and dead. Price may vary by product. Billing will be based on gross weight. A weight ticket from a certified scale is required for each load hauled, regardless of product type.
9. The Dept has estimated the net scale merchantable sawlog volume to be available for purchase under this contract. Other products may be part of this sale. All delivered wood will be weighed and billed at per ton bid rates. The Dept recognizes that a percentage of delivered wood may not meet the log manufacturing and recovery standards of the timber sale contract. The actual percentage will vary based on the log manufacturing and recovery specifications of the purchaser and tree conditions in the sale area. The actual delivered weight may vary, resulting in an overrun or under-run of the estimated tonnage. The Dept strongly recommends that bidders evaluate these effects before bidding.
10. The Dept does not conduct detailed road appraisals. All appraised costs are gross estimates or averages, provided only to show the relative amount of work required, and not the true market value. The Dept strongly recommends that bidders make their own estimates based on contract requirements. Cost estimates provided are not guaranteed.
11. Bidders are encouraged to examine the complete Timber Sale Package and Sale Area prior to bidding. Additional information is available at the phone numbers shown above.
12. Estimates for sale volume, species percents, defect, product class, etc. provided in this prospectus and volume estimates listed in the sale contract are not guaranteed.
13. This prospectus is provided for information purposes only. If the prospectus is in error or contradicts the Timber Sale Contract, the contract governs.

Additional Sale Information:

1. Prospective bidders may obtain a key to the gate accessing the Ewing Fish Crossover Road and Spur 19 during regular office hours (7 a.m. to 4:30 p.m. Monday through Friday). An ATV or equivalent vehicle is recommended for travel on the Ewing Fish Crossover Road.
2. The price for nonsawlog material may be negotiated. If this material is to be removed then specific criteria will be developed defining what the designation for harvest will be; some harvest units will require a specific prescription to be met. Areas within the project area have an estimated 20 tons per acre of small diameter lodgepole pine and western larch.
3. Units 1, 3, 4, 7, and 9 are to be "Cut by Description". Each of these prescriptions varies by unit therefore it is recommended potential bidders review the contract and/or contact the Stillwater Unit prior to viewing the sale.
4. Dust abatement such as Magnesium Chloride or Calcium Chloride is required on a portion of the Stillwater River Road and Loon's Echo Road. Additional dust abatement may be required when hauling during dusty conditions.
5. This project has an extensive road package; potential bidders should review the contract and/or contact the Stillwater Unit prior to bidding on the sale.
6. Several timing restrictions will apply to both road construction and timber harvests; potential bidders should review the contract and/or contact the Stillwater Unit prior to bidding on the sale.
7. Purchaser slashing required on Unit 4.

Timber Sale Information Sheet
Montana Department of Natural Resources and Conservation

FISH BULL FACE TIMBER SALE										
Timber Sale Cruise Data										
SPECIES	PP	DF	WL	LP	ES	WF	CE	WP	Dead	TOTAL or AVE
Minimum Bid										\$1.52/ton
Pounds per cubic foot		62	58	56	57	58	44.0			
Estimated tons of sawlogs (5.6" top DIB)		2,261	3,071	2,556	760	1,782	353			10,783 tons
Estimated tons of other material (pulp, etc)										not estimated
Gross MBF (Scribner 5.6" top DIB)		352	520	392	115	303	73			1,755 MBF
% Cull and Breakage		17	10	9	6	15	17			12.1%
Net MBF (Scribner 5.6" top DIB)		292	466	358	108	257	61			1,542 MBF
Average logs per MBF		31.6	27.5	34.4	29.8	33.9	35.5			30.9 logs/M
Average DBH		10.1	9.7	8.3	9.7	9.9	10.6			9.3 in.
Range of tons per acre to be harvested	—————→									11-50 tons/ac
Average MBF to cut per acre on the timber sale	—————→									3.8 MBF/ac
Range of cut trees per acre based on unit cruise	—————→									23-137
Calculated Sampling Error: Total cruised volume will fall between	1,249 and 1,735 Net MBF in 9 out of 10 cruises									14.1%
Tons Per Thousand Board Feet										
Contract Value - Estimated tons hauled per thousand Scribner board feet	10,783 estimated tons to a 5.6 inch top / 1,542 Net MBF Scribner to a 5.6 inch top DIB									6.99 tons/MBF

Contract Information	
Contract ending date	11/15/2015
Contract length	36 months
Operating Season:	Varies by unit, geographic area, and road system. Units 1-5 July 1-March 15; Units 11 & 12 may operate 30 days before Nov 15 and from Nov 15 -Mar 15; remaining units when soil restriction conditions are met.

Timber Sale Information Sheet
Montana Department of Natural Resources and Conservation

Logging Information	
% of volume logged by clearcut or seed tree cut	36%
% of volume logged with tractors	100%
% of volume logged by ground lead (jammer)	00%
% of volume logged by skyline	00%
Yarding distance tractor (average)	600 ft.
Yarding distance ground lead (average)	0 ft.
Yarding distance skyline (average)	0 ft.
Estimated haul distance (paved)	38.6 miles
Estimated haul distance (unpaved)	6.5 miles

Purchaser fees and estimated costs	
Forest Improvement fee perMBF	\$25.13/MBF
Forest Improvement fee per ton	\$3.60/ton
Forest Improvement fee estimated total	\$38,818.80
Forest Improvement fee quarterly installment	\$6,469.80
Estimated Purchaser-do FI total \$	\$0
Estimated Purchaser-do FI per ton	\$0.00/ton
Estimated Purchaser-do slash disposal work total	\$2,975.00
Estimated Purchaser-do slash disposal work per ton	\$0.28/ton
Bid Guarantee (total \$)	\$820.00
Performance Bond (total \$)	\$20,000.00

Road development and maintenance fees and estimates	
Estimated road development cost total	\$125,925
Estimated road development cost per ton	\$11.68/ton
Estimated road development cost perMBF	\$81.66/MBF
Estimated Purchaser-do road maintenance cost total	\$4,346
Estimated Purchaser-do road maintenance cost per ton	\$0.40/ton
Private road maintenance charges per ton	\$0.00/ton
USFS road maintenance charges per ton	\$0.00/ton
Miles of road construction	1.5 miles
Miles of road reconstruction	3.4 miles
Miles of temporary road with reclamation	1.7 miles
Miles of road reclamation or abandonment	0.9 miles
Miles of road maintenance, blading, and site improvements	5.5 miles

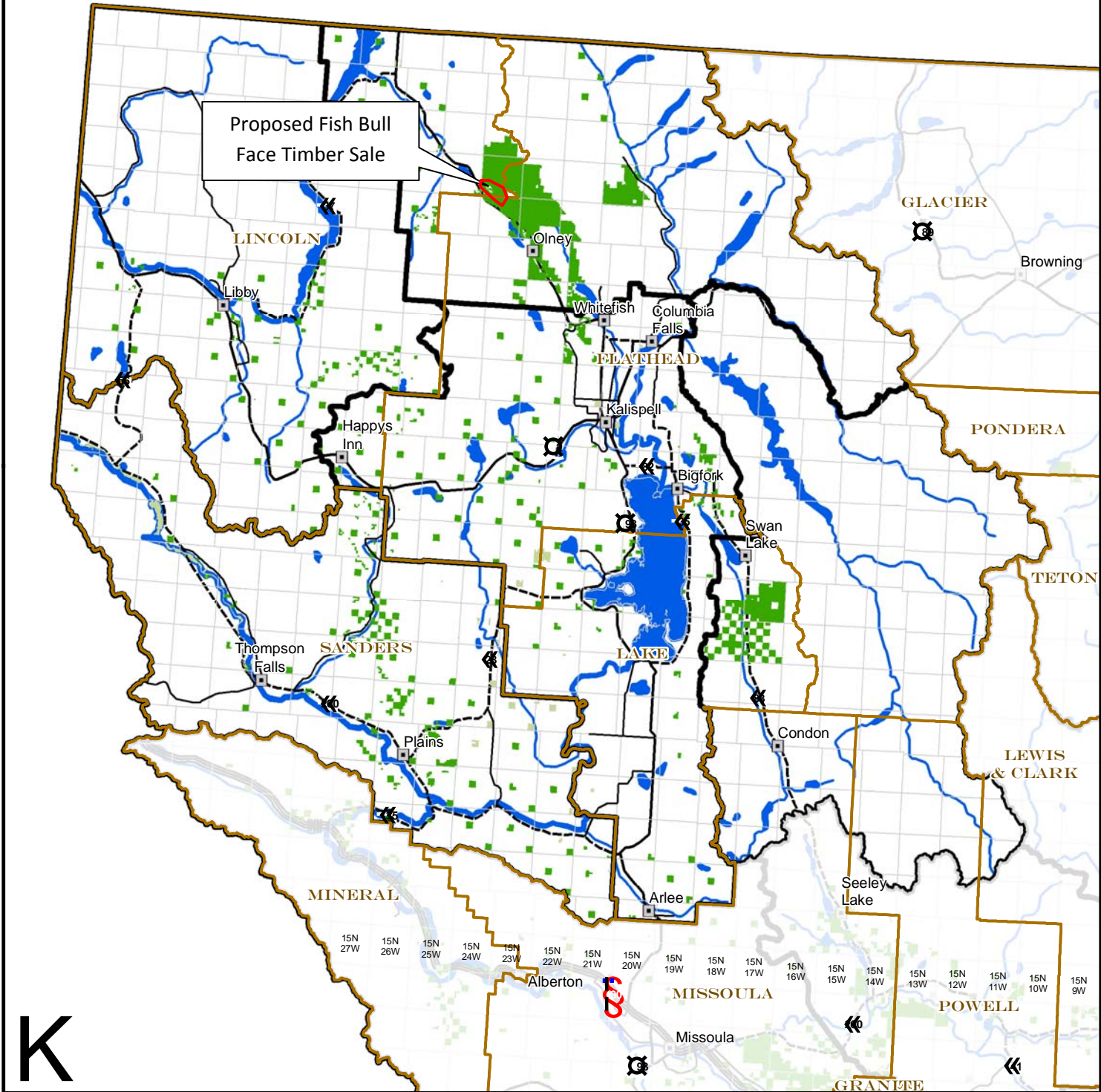
Unit harvest volume				
Unit #	Acres	Est Tons	Est MBF	Harvest date
1	39	1,438	197	October 1, 2015
2	47	2,358	362	October 1, 2015
3	134	2,762	387	October 1, 2015
4	37	489	69	October 1, 2015
5	6	242	35	October 1, 2015
6	9	303	45	October 1, 2015
7	12	672	115	October 1, 2015
8	32	363	52	October 1, 2015
9	87	1,832	239	October 1, 2015
ROW	7	325	42	August 1, 2015
	410 Ac.	10,783 tons	1,542 MBF	

Timber Sale Information Sheet
Montana Department of Natural Resources and Conservation

Legal description by trust					Unit harvest volume			
Legal description - subdivisions	Section	Twn	Rge	Grant	Unit #	Acres	Est Tons	Est MBF
SE1/4	33	34N	24W	CS	1	9	332	45
SW1/4	34	34N	24W	CS	1	30	1,106	152
S1/2	34	34N	24W	CS	2	24	1,204	185
N1/2	3	33N	24W	CS	2	23	1,154	177
NW1/4	3	33N	24W	CS	3	114	2,350	329
NE1/4	4	33N	24W	CS	3	13	268	38
SE 1/4	33	34N	24W	CS	3	7	144	20
NE1/4	33	34N	24W	CS	4	37	489	69
NW 1/4	33	34N	24W	CS	5	6	242	35
NE 1/4	32	34N	24W	CS	6	2	67	10
NW 1/4	33	34N	24W	CS	6	7	236	35
NE 1/4	32	34N	24W	CS	7	10	470	88
NW1/4	33	34N	24W	CS	7	3	202	27
E 1/2	19	34N	24W	CS	8	32	363	52
W 1/2	19	34N	24W	CS	9	87	1,832	239
E1/2	29	34N	24W	CS	ROW	3	139	18
NE1/4	32	34N	24W	CS	ROW	1	46	6
NW1/4;S1/2	33	34N	24W	CS	ROW	3	139	17
See <u>Instructions</u> for how to fill in this table								
Totals						410 Ac.	10,783 T	1,542 M

Fish Bull Face Timber Sale Vicinity Map

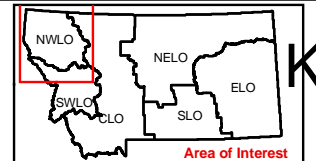
Sections 19, 20, 29, 30, 32, 33 & 34 of T34N R24W
and Sections 3 & 4 of T33N, R24W
Lincoln County and Flathead County



K

	Interstate Highway		County		City
	U.S. Route		DNRC other		Township/Range
	State Highway		DNRC managed for timber		Management Unit
	Secondary Roads				

6 December 2010
Montana DNRC
Technical Services Section/dr

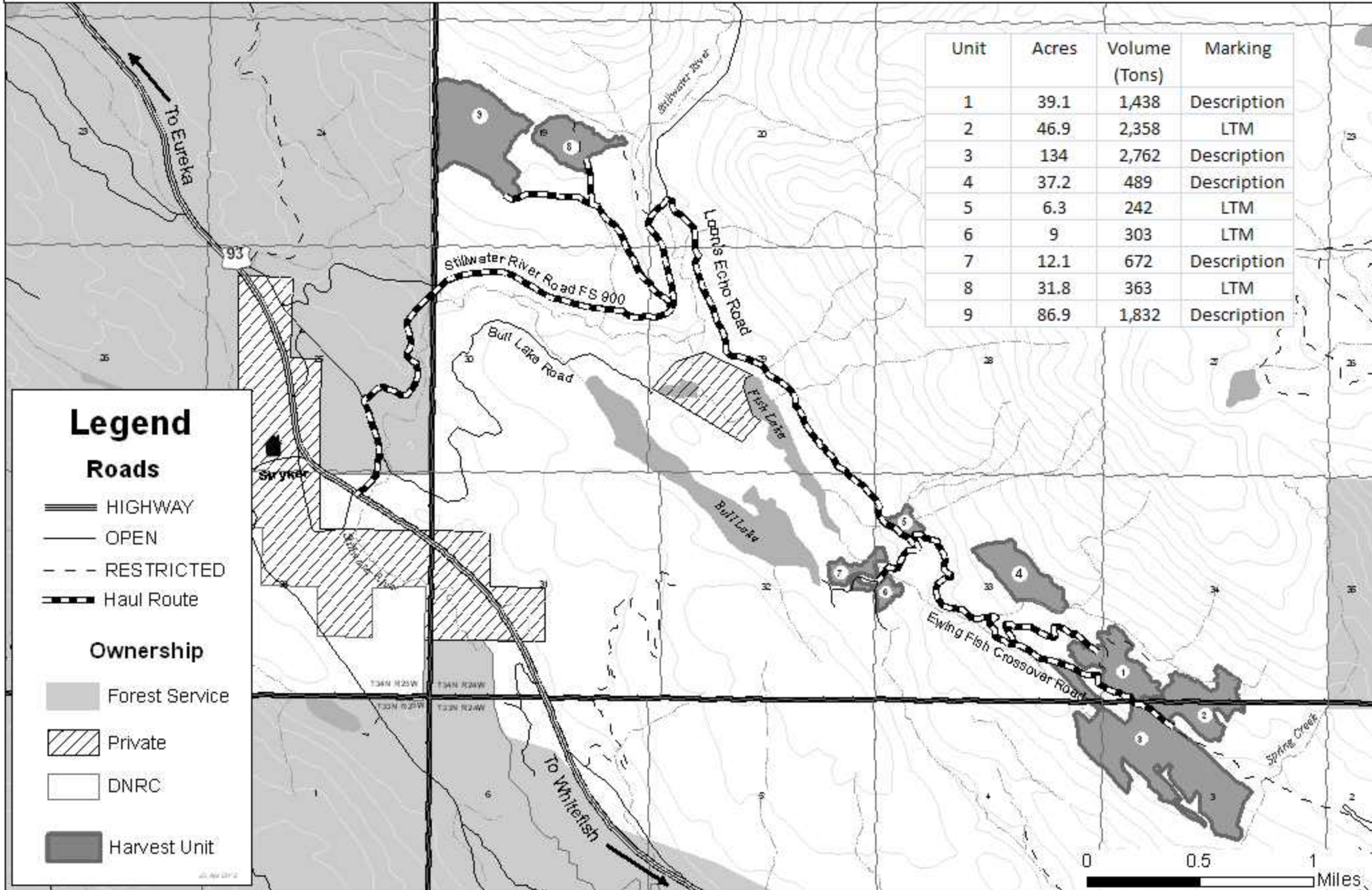




Fish Bull Face Timber Sale Project Harvest Units & Haul Route Map

Attachment A, page 2 of 4

Sections 19, 32, 33, 34, T34N, R24W & Sections 3, 4, T33N, R24W



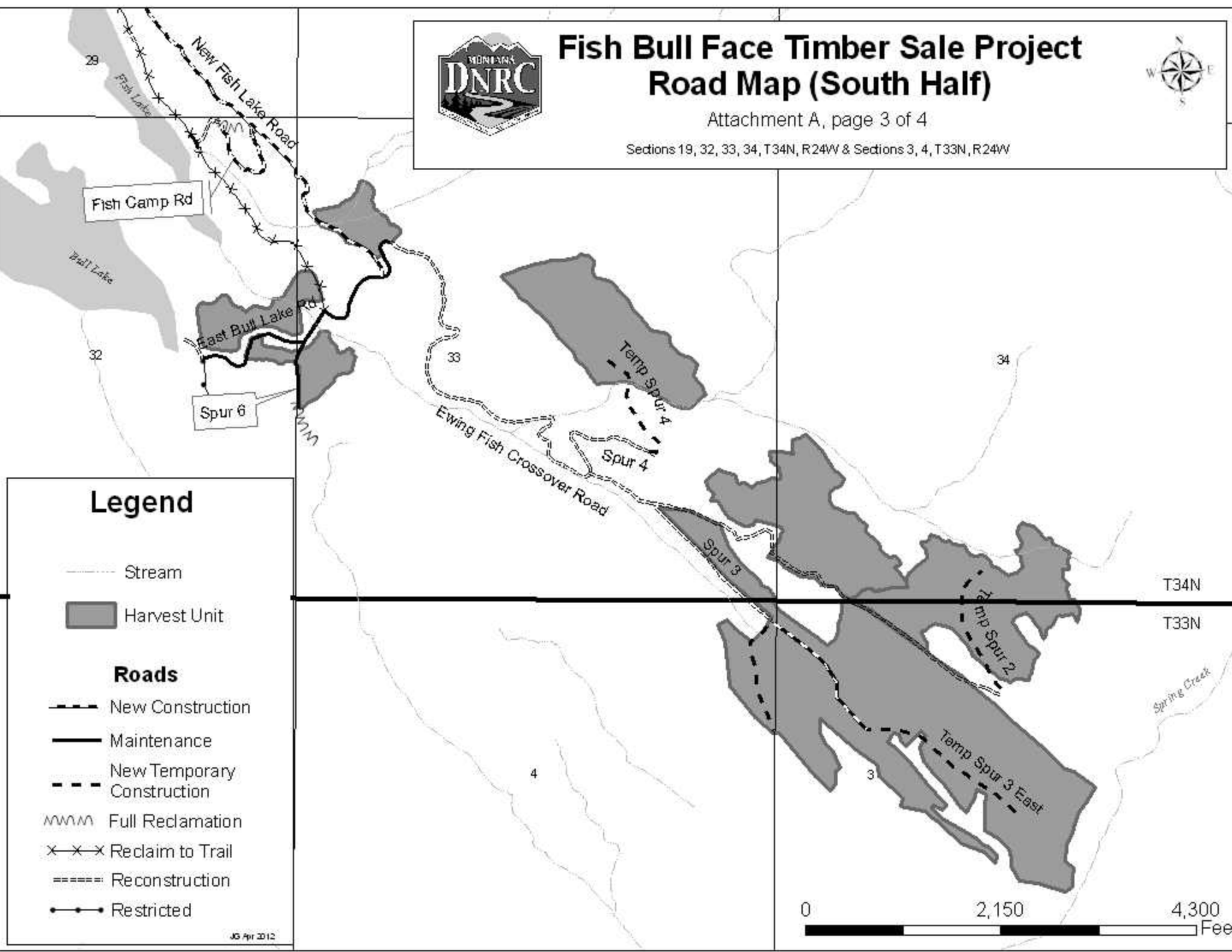


Fish Bull Face Timber Sale Project Road Map (South Half)



Attachment A, page 3 of 4

Sections 19, 32, 33, 34, T34N, R24W & Sections 3, 4, T33N, R24W



Legend

Stream

Harvest Unit

Roads

New Construction

Maintenance

New Temporary Construction

Full Reclamation

Reclaim to Trail

Reconstruction

Restricted

0 2,150 4,300 Feet

FS

24

19



Fish Bull Face Timber Sale Project Road Map (North Half)

Attachment A, page 4 of 4

Sections 19, 32, 33, 34, T34N, R24W & Sections 3, 4, T33N, R24W



Legend

- Stream
- Harvest Unit

Roads

- New Construction
- Maintenance
- New Temporary Construction
- Full Reclamation
- Reclaim to Trail
- Reconstruction
- Restricted

30 Apr 2012

