

## NOTICE OF SALE

### Department of Natural Resources & Conservation Timber Sale

The Parrot Creek West Timber Sale is located within Section 36, T8N-R26E on the State's Southern Land Office. Approximately 2,046 tons of ponderosa pine sawlogs are offered for sale.

Sealed bids will be opened at the Department of Natural Resources & Conservation, 2705 Spurgin Road, Missoula, Montana on **June 27, 2017 at 2:00 p.m.** Bids may be hand delivered or mailed and will be accepted any time prior to the bid opening. **DNRC recommends that bidders contact the Trust Land Management Division (406-542-4300) prior to the bid opening to ensure that your bid has been received.** Bids must be accompanied by a deposit of **\$205.00**, representing 5% of the minimum bid value of the sale in cashier's check, certified check, bank money order or bank draft to be applied to the first sale invoice for the successful bidder. Bid bonds will be accepted and, for the successful bidder, will be closed upon execution of the Timber Sale Contract and Timber Sale Bond.

The sale will be awarded to the highest responsible bidder. **Award of the timber sale is conditional upon approval of the timber sale by the State Board of Land Commissioners at their June 19, 2017 meeting.** If the successful bidder is unable to execute the contract within **30** calendar days from the date the sale is awarded, the bid deposit will be retained by the Department as liquidated damages. The right is reserved to reject any or all bids.

Prospective bidders can obtain the sale prospectus, sale contract and bid forms from the Department of Natural Resources & Conservation, Trust Land Management Division, in Missoula (406-542-4300).

Visit our website at <http://dnrc.mt.gov/divisions/trust/forest-management/timber-sale-information> for upcoming sales and bid results.

**TIMBER SALE PROSPECTUS**  
**MONTANA DEPARTMENT OF NATURAL RESOURCES AND CONSERVATION**

<b>Timber Sale Name: PARROT CREEK WEST</b>		
<b>Timber Sale Location: Section 36, T8N-R26E</b>		
<b>For specific sale information, contact: Jeff Hermanns</b>		
Phone	406-247-4403	Southern Area Office
<b>For copies of the Timber Sale Contract and bid forms, contact:</b>		
Phone	406-542-4300	Forest Management Bureau DNRC Missoula Office

**General Bidding Information**

1. Bids must be submitted on standard Department of Natural Resources & Conservation (Dept) bid forms.
2. Timber will be sold to the highest responsible bidder; however, the Dept reserves the right to reject any or all bids.
3. The Dept recommends that bidders contact the Forest Management Bureau, Trust Land Management Division (542-4300) prior to the bid opening to ensure that your bid has been received.
4. A **Bid Guarantee** must accompany all bids and must be in the form of cash, cashiers check, certified check, money order, bank draft, surety bond or irrevocable letter of credit.
5. The Purchaser must submit a **Performance Bond** to the Dept within a maximum of 30 days of notification of sale award. The bond amount will be, at a minimum, 20% of the total bid value of the sale. The performance bond may be in the form of cash, irrevocable letter of credit, surety bond or certificate of deposit. The performance bond must be maintained separately from other payments for the duration of the sale contract. See the Timber Sale Contract for additional information.
6. The purchaser must submit an **Advance Stumpage Payment** prior to cutting any timber. The amount of the advance stumpage payment will be based on the expected harvest rate and the bid value of the stumpage. The advance stumpage payment may be in the form of cash, irrevocable letter of credit, payment bond or certificate of deposit.
7. At rates specified in the Contract, the purchaser will pay **Forest Improvement Fees** on all sawlog volume. All applicable **Road Use and/or Maintenance fees** will also be paid by the Purchaser in addition to stumpage payments.
8. This sale is being sold based on the gross weight of all species. Minimum price and bid price are on a per ton basis. Unless specified, the price applies to all species, green and dead. Price may vary by product. Billing will be based on gross weight. A weight ticket from a certified scale is required for each load hauled, regardless of product type.
9. The Dept has estimated the net scale merchantable sawlog volume to be available for purchase under this contract. Other products may be part of this sale. All delivered wood will be weighed and billed at per ton bid rates. The Dept recognizes that a percentage of delivered wood may not meet the log manufacturing and recovery standards of the timber sale contract. The actual percentage will vary based on the log manufacturing and recovery specifications of the purchaser and tree conditions in the sale area. The actual delivered weight may vary, resulting in an overrun or under-run of the estimated tonnage. The Dept strongly recommends that bidders evaluate these effects before bidding.
10. The Dept does not conduct detailed road appraisals. All appraised costs are gross estimates or averages, provided only to show the relative amount of work required, and not the true market value. The Dept strongly recommends that bidders make their own estimates based on contract requirements. Cost estimates provided are not guaranteed.
11. Bidders are encouraged to examine the complete Timber Sale Package and Sale Area prior to bidding. Additional information is available at the phone numbers shown above.
12. Estimates for sale volume, species percents, defect, product class, etc. provided in this prospectus and volume estimates listed in the sale contract are not guaranteed.
13. This prospectus is provided for information purposes only. If the prospectus is in error or contradicts the Timber Sale Contract, the contract governs.

**Additional Sale Information:**

1. PURCHASER CUT TREE SELECTION: Trees are required to be cut as described in the contract.
2. NON-SAWLOG MATERIAL REQUIRED: All trees that are not designated to leave to meet the prescription will be cut and then disposed of using a combination of the following: cut into a pulp/ firewood log, skidded to a landing pile or slashed in the unit as directed by the Forest Officer. Non-sawlog material may be hauled at the rate of \$50.00 per load.

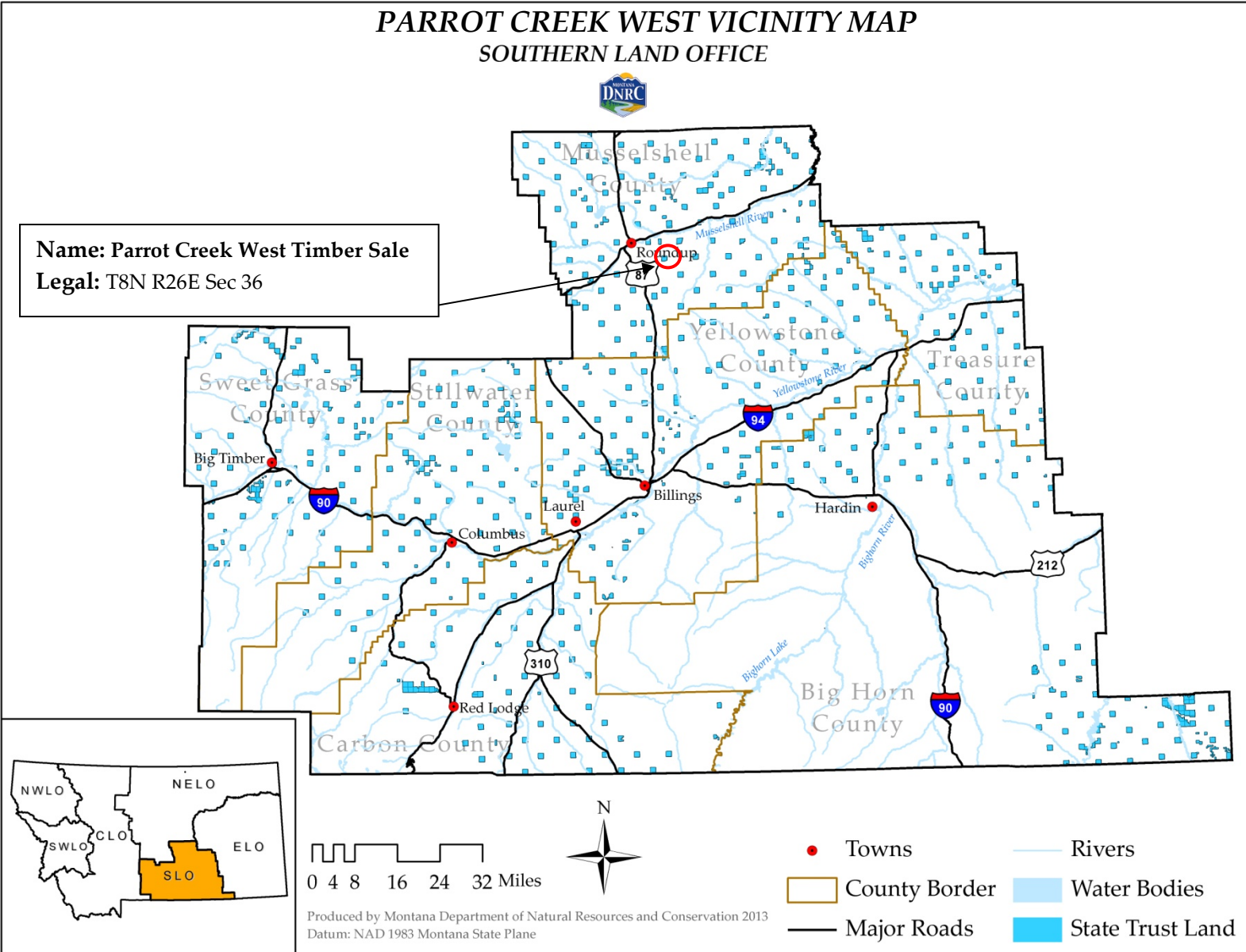
**Timber Sale Information Sheet**  
**Montana Department of Natural Resources and Conservation**

<b>Parrot Creek West</b>											
<b>Timber Sale Cruise Data</b>											
SPECIES	PP	DF	WL	LP	ES	WF	CE	WP	Dead	TOTAL or AVE	
Minimum Bid										\$2.00 per ton	
Pounds per cubic foot											
Estimated tons of sawlogs (5.6" top DIB)	2,046									<b>2,046 tons</b>	
Estimated tons of other material (pulp, etc)	4154									4,154 tons	
Gross MBF (Scribner 5.6" top DIB)	992									992 MBF	
% Cull and Breakage	15									66.6%	
Net MBF (Scribner 5.6" top DIB)	331									331 MBF	
Average logs per MBF										0.0 logs/M	
Average DBH										0.0 in.	
Average tons per acre harvested in leave-tree marked units	→									0 tons/ac	
Average tons per acre harvested in cut-tree-marked units	→									0 tons/ac	
Average MBF to cut per acre on the timber sale	→									1.3 MBF/ac	
Range of cut trees per acre based on unit cruise	→									0	
Calculated Sampling Error: Total cruised volume will fall between	0 and 0 Net MBF in 9 out of 10 cruises									0.0%	
<b>Tons Per Thousand Board Feet</b>											
Contract Value - Estimated tons hauled per thousand Scribner board feet	2,046 estimated tons to a 5.6 inch top / 331 Net MBF Scribner to a 5.6 inch top DIB									6.18 tons/MBF	

<b>Contract Information</b>	
Contract ending date	12/31/2022
Contract length	5 years
Operating Season:	8 months

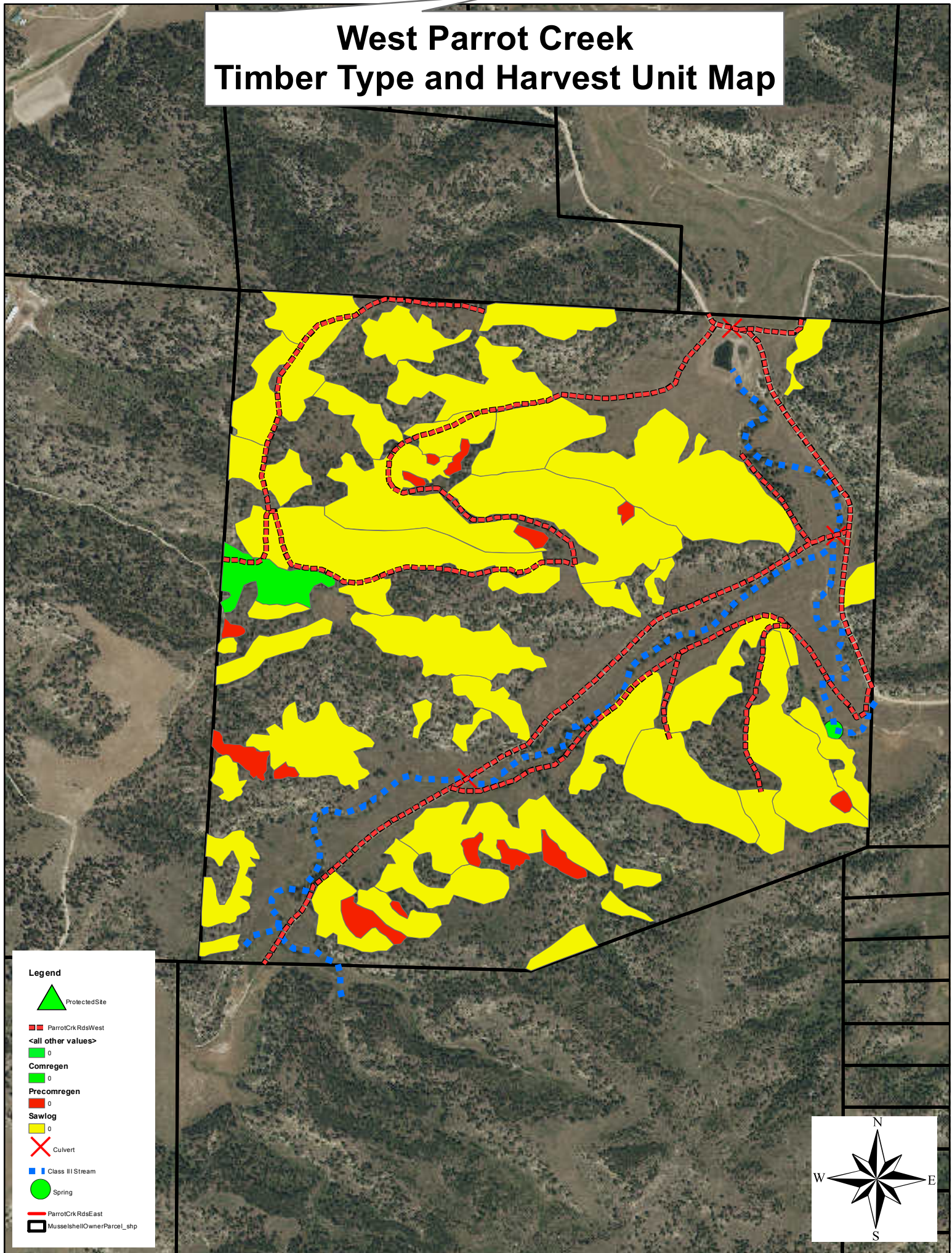


A-1: Timber Sale Vicinity Map



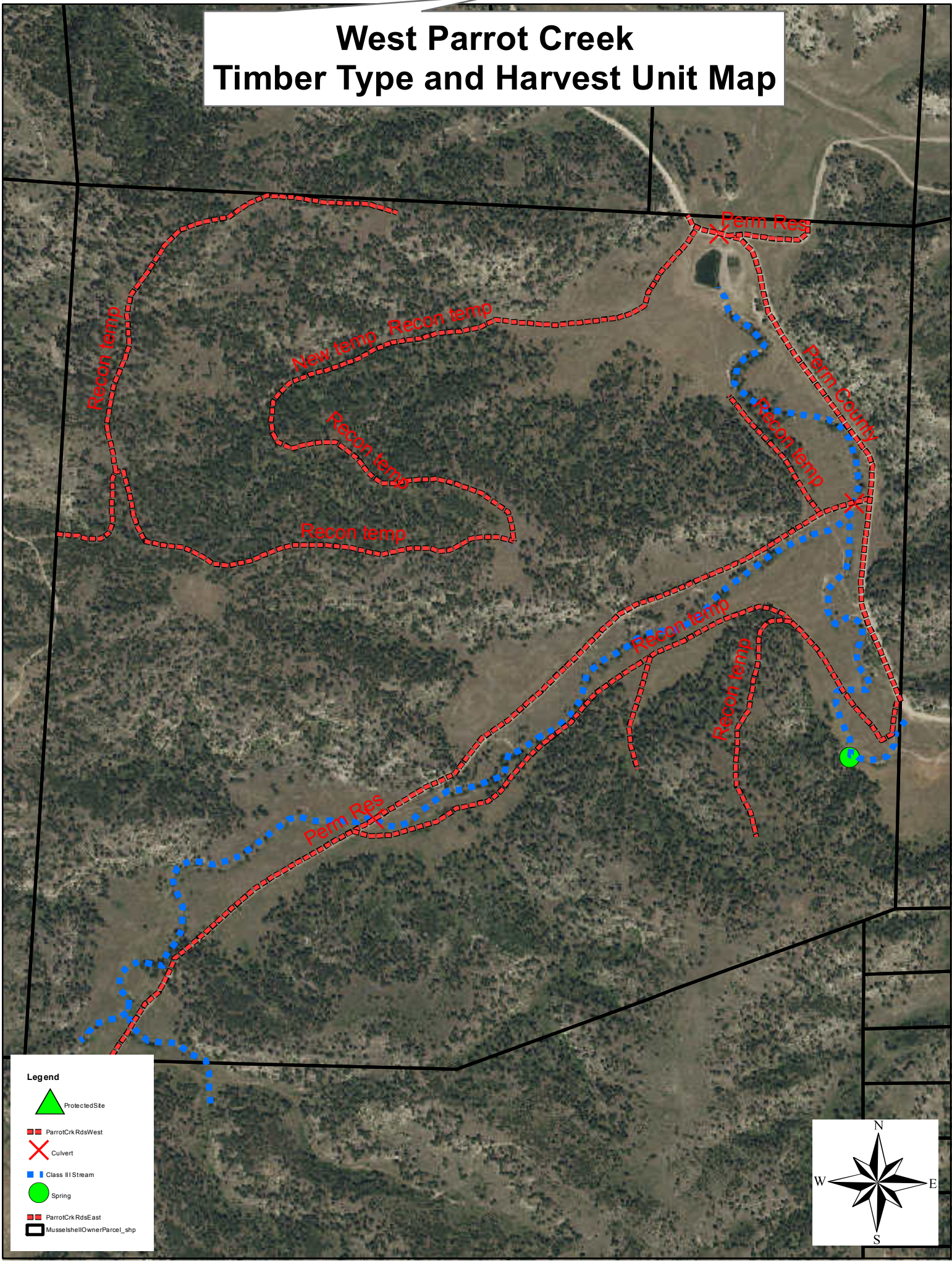


# West Parrot Creek Timber Type and Harvest Unit Map












# West Parrot Creek Timber Type and Harvest Unit Map



## Legend

-  Protected Site
-  ParrotCrkRdsWest
-  Culvert
-  Class III Stream
-  Spring
-  ParrotCrkRdsEast
-  MusselshellOwnerParcel\_shp

