

## NOTICE OF SALE

### Department of Natural Resources & Conservation Timber Sale

The Devil Mountain 2 Timber Sale is located within Section 36, T12N-R11W on the State's Anaconda Unit. Approximately 8,703 tons, consisting primarily of Douglas-fir sawlogs, are offered for sale. Bidders may bid on all Units (8,703 tons) or Tractor Units only (5,838 tons). The sale will be awarded based on highest total bid value from a responsible bidder.

Sealed bids will be opened at the Department of Natural Resources & Conservation, 2705 Spurgin Road, Missoula, Montana on **June 14, 2017 at 2:00 p.m.** Bids may be hand delivered or mailed and will be accepted any time prior to the bid opening. **DNRC recommends that bidders contact the Trust Land Management Division (406-542-4300) prior to the bid opening to ensure that your bid has been received.** Bids must be accompanied by a deposit of **\$2,426.00**, in cashier's check, certified check, bank money order or bank draft to be applied to the first sale invoice for the successful bidder. Bid bonds will be accepted and, for the successful bidder, will be closed upon execution of the Timber Sale Contract and Timber Sale Bond.

If the successful bidder is unable to execute the contract within **30** calendar days from the date the sale is awarded, the bid deposit will be retained by the Department as liquidated damages. The right is reserved to reject any or all bids.

Prospective bidders can obtain the sale prospectus, sale contract and bid forms from the Department of Natural Resources & Conservation, Trust Land Management Division, in Missoula (406-542-4300).

Visit our website at <http://dnrc.mt.gov/divisions/trust/forest-management/timber-sale-information> for upcoming sales and bid results.

**TTIMBER SALE PROSPECTUS**  
**MONTANA DEPARTMENT OF NATURAL RESOURCES AND CONSERVATION**

<b>Timber Sale Name: Devil Mountain 2</b>			
<b>Timber Sale Location: Approximately 12 miles NE of Drummond, MT</b>			
<b>For specific sale information, contact: Brian Robbins</b>			
Phone	406-563-6078	Unit Office: Anaconda	
<b>For copies of the Timber Sale Contract and bid forms, contact:</b>			
Phone	406-542-4300	Forest Management Bureau	DNRC Missoula Office
Phone	406-542-4200	Southwestern	Land Office

**General Bidding Information**

1. Bids must be submitted on standard Department of Natural Resources & Conservation (Dept) bid forms.
2. Timber will be sold to the highest responsible bidder; however, the Dept reserves the right to reject any or all bids.
3. The Dept recommends that bidders contact the Forest Management Bureau, Trust Land Management Division (542-4300) prior to the bid opening to ensure that your bid has been received.
4. A **Bid Guarantee** must accompany all bids and must be in the form of cash, cashiers check, certified check, money order, bank draft, surety bond or irrevocable letter of credit.
5. The Purchaser must submit a **Performance Bond** to the Dept within a maximum of 30 days of notification of sale award. The bond amount will be, at a minimum, 20% of the total bid value of the sale. The performance bond may be in the form of cash, irrevocable letter of credit, surety bond or certificate of deposit. The performance bond must be maintained separately from other payments for the duration of the sale contract. See the Timber Sale Contract for additional information.
6. The purchaser must submit an **Advance Stumpage Payment** prior to cutting any timber. The amount of the advance stumpage payment will be based on the expected harvest rate and the bid value of the stumpage. The advance stumpage payment may be in the form of cash, irrevocable letter of credit, payment bond or certificate of deposit.
7. At rates specified in the Contract, the purchaser will pay **Forest Improvement Fees** on all sawlog volume. All applicable **Road Use and/or Maintenance fees** will also be paid by the Purchaser in addition to stumpage payments.
8. This sale is being sold based on the gross weight of all species. Minimum price and bid price are on a per ton basis. Unless specified, the price applies to all species, green and dead. Price may vary by product. Billing will be based on gross weight. A weight ticket from a certified scale is required for each load hauled, regardless of product type.
9. The Dept has estimated the net scale merchantable sawlog volume to be available for purchase under this contract. Other products may be part of this sale. All delivered wood will be weighed and billed at per ton bid rates. The Dept recognizes that a percentage of delivered wood may not meet the log manufacturing and recovery standards of the timber sale contract. The actual percentage will vary based on the log manufacturing and recovery specifications of the purchaser and tree conditions in the sale area. The actual delivered weight may vary, resulting in an overrun or under-run of the estimated tonnage. The Dept strongly recommends that bidders evaluate these effects before bidding.
10. The Dept does not conduct detailed road appraisals. All appraised costs are gross estimates or averages, provided only to show the relative amount of work required, and not the true market value. The Dept strongly recommends that bidders make their own estimates based on contract requirements. Cost estimates provided are not guaranteed.
11. Bidders are encouraged to examine the complete Timber Sale Package and Sale Area prior to bidding. Additional information is available at the phone numbers shown above.
12. Estimates for sale volume, species percents, defect, product class, etc. provided in this prospectus and volume estimates listed in the sale contract are not guaranteed.
13. This prospectus is provided for information purposes only. If the prospectus is in error or contradicts the Timber Sale Contract, the contract governs.

**Additional Sale Information:**

1. Purchasers may bid on this sale with the cable volume included (all Units) or without (Tractor Units only). The sale will be awarded based on highest total stumpage bid value from a responsible bidder. If the highest bid value received is for Tractor Units only, Cable ground will not be required. If the highest bid value received includes the Cable ground, Cable ground will be required removal.
2. This Prospectus and the Devil Mountain 2 Sample Contract reflects all Units' volume and requirements. If the highest bid received is Tractor only, the Cable units, associated volume, and associated roadwork (approximately 1.1 miles of new construction) will be deleted from the final Contract.
3. Access to the sale is from State highway 271. The county access road begins in the town of Helmsville just east of the County shop and directly across from Geary Lane. Proceed approximately 3 miles south to a 90 degree bend in the road. The private access road is through a powder river style gate.
4. The private road is extremely difficult under wet conditions. Please use only under dry conditions, or use an ATV if wet conditions are present. Road Junctions will be flagged in pink/blue flagging.
5. Non-sawlog material will be required removal from Tractor Units, at a rate of \$1/ton, as long as the price per ton for delivered material to Willis Enterprises is \$32/ton or higher. If the delivered price to Willis is lower than \$32/ton, purchaser will be required to cut non-sawlog material but hauling would be optional.

**Timber Sale Information Sheet**  
**Montana Department of Natural Resources and Conservation**

DEVIL MOUNTAIN 2										
Timber Sale Cruise Data										
SPECIES		DF		LP		WF		Dead DF	Dead LP	TOTAL or AVE
Minimum Bid - ALL UNITS										\$5.57 per ton
Minimum Bid - TRACTOR ONLY										\$8.31 per ton
Pounds per cubic foot										
ALL UNITS- Estimated sawlog tons (5.6" top DIB)		7,697		214		46		352	394	8,703 tons
TRACTOR ONLY- Estimated sawlog tons (5.6" top DIB)		5,663		175						5,838 tons
Estimated tons of other material (pulp, etc)		550		1000				250	250	2,050 tons
Gross MBF (Scribner 5.6" top DIB)		1,404		41		7		134	98	1,684 MBF
% Cull and Breakage		25		27		20		45	31	26.7%
ALL UNITS - Net MBF (Scribner 5.6" top DIB)		1,058		30		5		74	67	1,234 MBF
TRACTOR ONLY - Net MBF (Scribner 5.6" top DIB)		809		25						834 MBF
Average logs per MBF		33		61		45		28	62	35.0 logs/M
Average DBH		10.9		8		9		17	8	10.6 in.
Average tons per acre harvested in leave-tree marked units	→									35 tons/ac
Average tons per acre harvested in cut-tree-marked units	→									0 tons/ac
Average MBF to cut per acre on the timber sale	→									5.0 MBF/ac
Range of cut trees per acre based on unit cruise	→									153
Calculated Sampling Error: Total cruised volume will fall between	1,033 and 1,435 Net MBF in 9 out of 10 cruises									16.3%
Tons Per Thousand Board Feet										
Contract Value - Estimated tons hauled per thousand Scribner board feet	8,703 estimated tons to a 5.6 inch top / 1,234 Net MBF Scribner to a 5.6 inch top DIB									7.05 tons/MBF

Contract Information	
Contract ending date	12/1/2020
Operating Season:	June 15 - March 1 (Depending upon soil moisture and road conditions)

**Timber Sale Information Sheet**  
**Montana Department of Natural Resources and Conservation**

<b>Logging Information</b>	
% of volume logged by clearcut or seed tree cut	20%
% of volume logged with tractors	62%
% of volume logged by ground lead (jammer)	00%
% of volume logged by skyline	38%
Yarding distance tractor (average)	600 ft.
Yarding distance ground lead (average)	0 ft.
Yarding distance skyline (average)	500 ft.
Estimated haul distance (paved)	50.0 miles
Estimated haul distance (unpaved)	11.0 miles

<b>Purchaser fees and estimated costs</b>	
Forest Improvement fee per MBF	\$20.60/MBF
Forest Improvement fee per ton	\$2.92/ton
Estimated Purchaser-do FI total \$	\$0
Estimated Purchaser-do slash disposal work total (All Units)	\$15,000.00
Estimated Purchaser-do slash disposal work total (Tractor Only)	\$0.00
Bid Guarantee (total \$)	\$2,426.00
Performance Bond (total \$)	20% of bid value

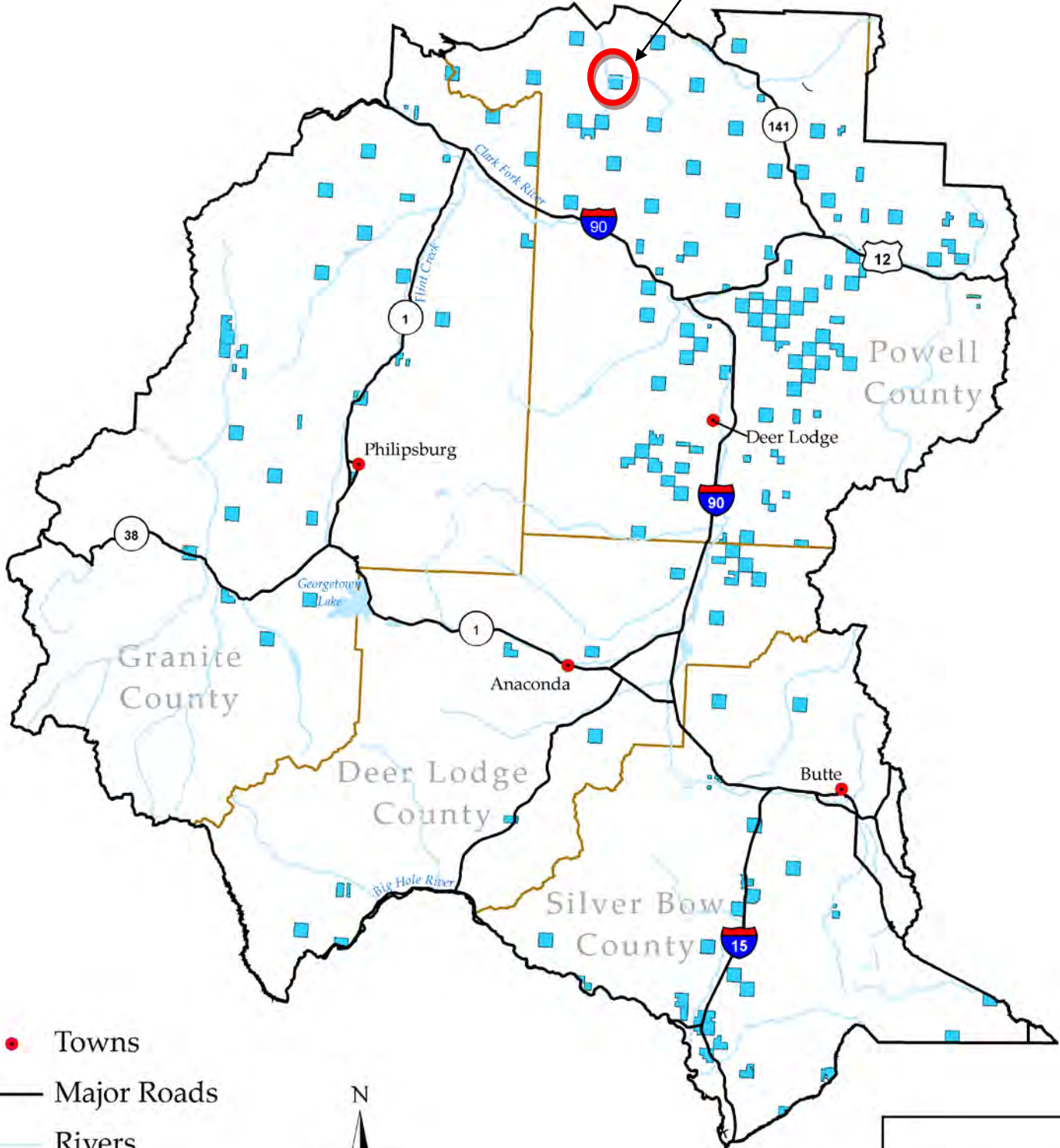
<b>Road development and maintenance fees and estimates</b>	
Estimated road development cost total (All Units)	\$38,151
Estimated road development cost total (Tractor Only)	\$20,000
Estimated road development cost per ton	\$4.38/ton
Estimated road development cost perMBF	\$30.92/MBF
Estimated Purchaser-do road maintenance cost total	\$10,000
Estimated Purchaser-do road maintenance cost per ton	\$1.15/ton
Private road maintenance charges per ton	\$0.00/ton
USFS road maintenance charges per ton	\$0.00/ton
Miles of road construction (All Units)	2.9 miles
Miles of road construction (Tractor Only)	1.8 miles
Miles of road reconstruction	0.0 miles
Miles of road with site improvements	8.6 miles
Miles of road reclamation or abandonment	0.0 miles
Miles of road maintenance and blading	8.6 miles

<b>Unit harvest volume</b>				
Unit #	Acres	Est Tons	Est MBF	Harvest date
1	103.1	4,660	637	October 15, 2020
2	23.4	588	90	October 15, 2020
3	16.32	415	82	October 15, 2020
4	7.78	175	25	October 15, 2020
7 (CABLE)	47.62	1,540	213	October 15, 2020
8 (CABLE)	32.31	1,042	147	October 15, 2020
9 (accessed from Cable Roads)	10.93	283	40	October 15, 2020
	241 Ac.	8,703 tons	1,234 MBF	

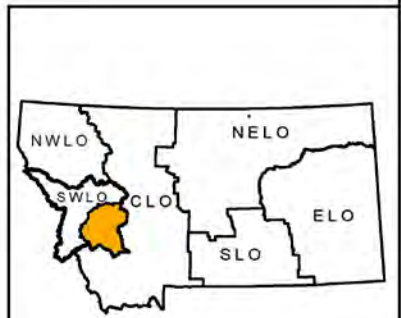
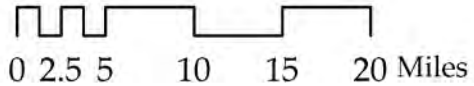
# DEVIL MOUNTAIN 2 VICINITY MAP ANACONDA UNIT

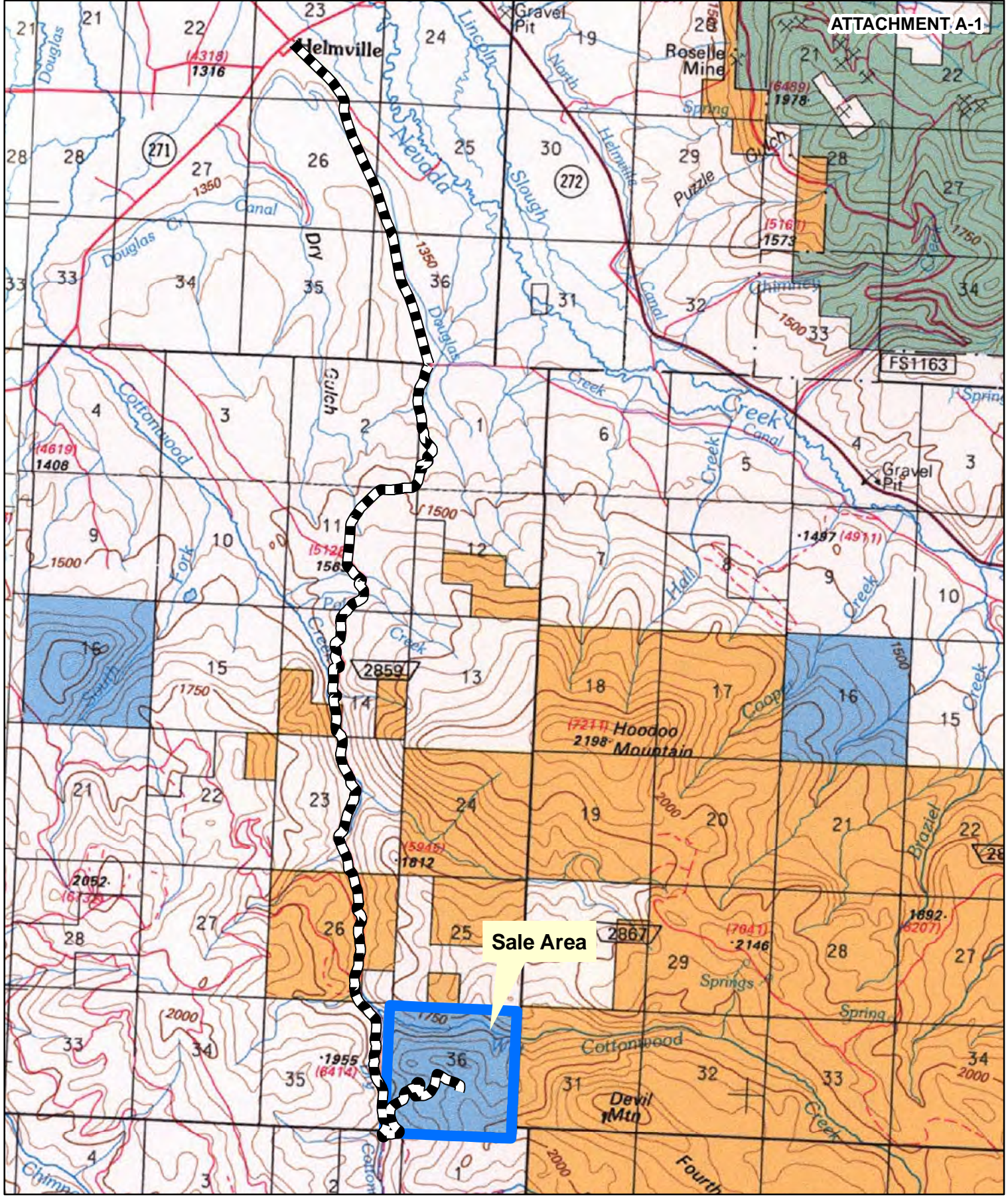


Section 36, T12N, R11W





- Towns
- Major Roads
- Rivers
- Water Bodies
- County Border
- State Trust Land



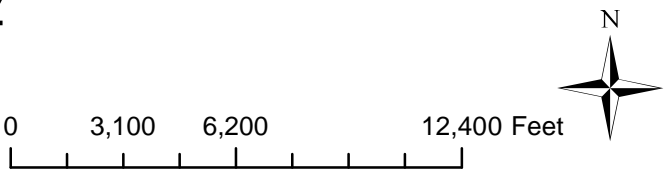


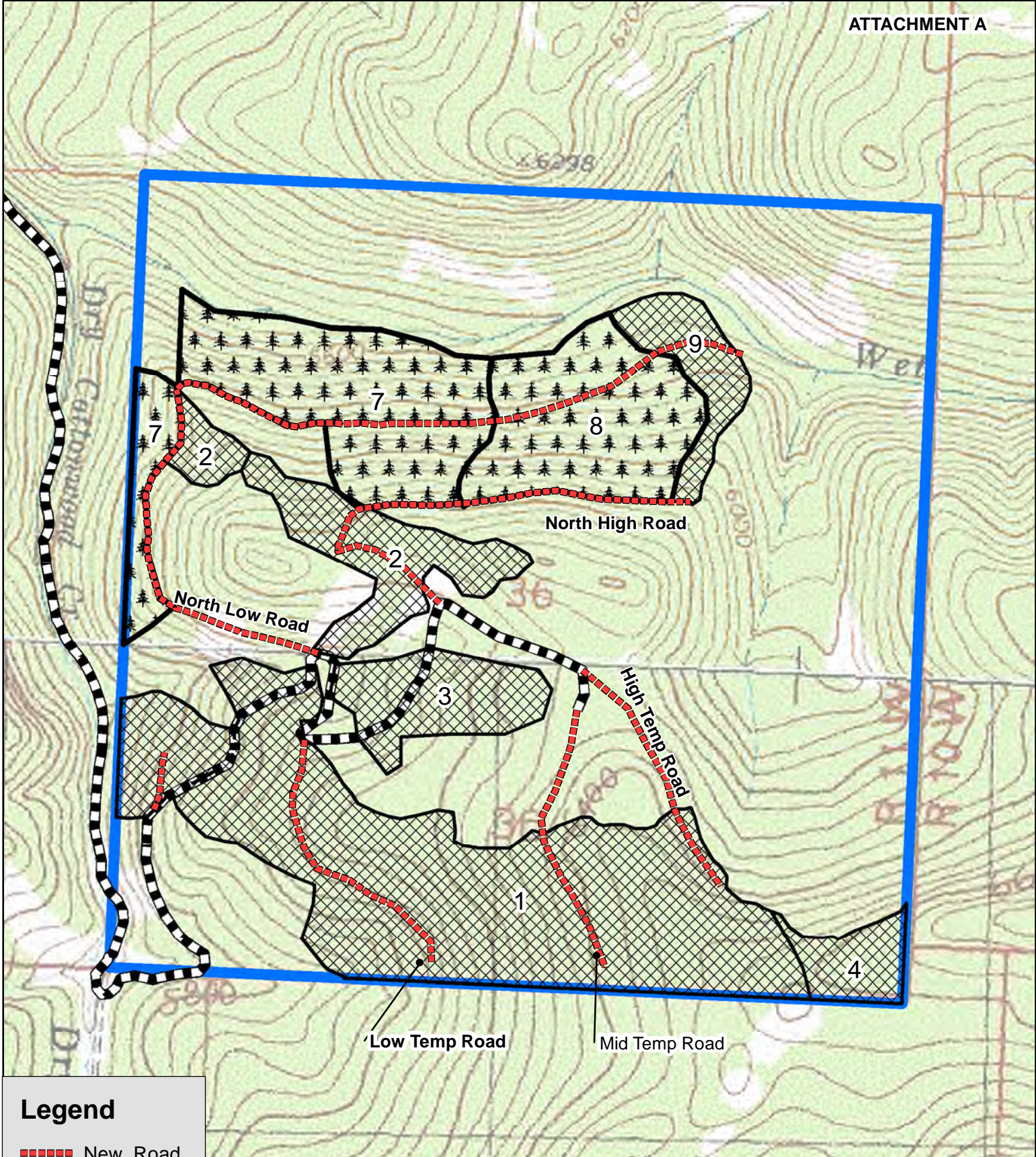
**Legend**

-  Haul Route
-  State Land

**DEVIL MOUNTAIN 2  
HAUL MAP  
T12N, R11W, S36**

Map Created by BR 11/22/2016





**Legend**

----- New\_Road

**Harvest**

Cable

Tractor

Haul Route

State Land

**DEVIL MOUNTAIN 2  
TIMBER SALE MAP  
T12N, R11W, S36**

Map Created by:  
BR 12/2016

