

NOTICE OF SALE

Department of Natural Resources & Conservation Timber Sale

The Lower Calico Fire Salvage Timber Sale is located within Sections 4 and 10, T22N-R27W on the State's Plains Unit. Approximately 9,020 tons, consisting of mixed conifer sawlogs, are offered for sale.

Sealed bids will be opened at the Department of Natural Resources & Conservation, 2705 Spurgin Road, Missoula, Montana on **January 27, 2017 at 2:00 p.m.** Bids may be hand delivered or mailed and will be accepted any time prior to the bid opening. **DNRC recommends that bidders contact the Trust Land Management Division (406-542-4300) prior to the bid opening to ensure that your bid has been received.** Bids must be accompanied by a deposit of **\$5,913.00**, representing 5% of the minimum bid value of the sale in cashier's check, certified check, bank money order or bank draft to be applied to the first sale invoice for the successful bidder. Bid bonds will be accepted and, for the successful bidder, will be closed upon execution of the Timber Sale Contract and Timber Sale Bond.

The sale will be awarded to the highest responsible bidder. **Award of the timber sale is conditional upon approval of the timber sale by the State Board of Land Commissioners at their January 17, 2017 meeting.** If the successful bidder is unable to execute the contract within **21** calendar days from the date the sale is awarded, the bid deposit will be retained by the Department as liquidated damages. The right is reserved to reject any or all bids.

Prospective bidders can obtain the sale prospectus, sale contract and bid forms from the Department of Natural Resources & Conservation, Trust Land Management Division, in Missoula (406-542-4300), the Northwestern Land Office in Kalispell (406-751-2257), or the Plains Unit Office in Plains, MT (406-826-4722).

Visit our website at <http://dnrc.mt.gov/divisions/trust/forest-management/timber-sale-information> for upcoming sales and bid results.

TIMBER SALE PROSPECTUS
MONTANA DEPARTMENT OF NATURAL RESOURCES AND CONSERVATION

Timber Sale Name: Lower Calico Fire Salvage			
Timber Sale Location: Sections 4 & 10, T22N, R27W			
For specific sale information, contact: Dale Peters			
Phone	406-826-4722	Plains	Unit Office
For copies of the Timber Sale Contract and bid forms, contact:			
Phone	406-542-4300	Forest Management Bureau	DNRC Missoula Office
Phone	406-751-2257	Northwest	Land Office

General Bidding Information

1. Bids must be submitted on standard Department of Natural Resources & Conservation (Dept) bid forms.
2. Timber will be sold to the highest responsible bidder; however, the Dept reserves the right to reject any or all bids.
3. The Dept recommends that bidders contact the Forest Management Bureau, Trust Land Management Division (542-4300) prior to the bid opening to ensure that your bid has been received.
4. A **Bid Guarantee** must accompany all bids and must be in the form of cash, cashiers check, certified check, money order, bank draft, surety bond or irrevocable letter of credit.
5. The Purchaser must submit a **Performance Bond** to the Dept within a maximum of **21** days of notification of sale award. The bond amount will be, at a minimum, 20% of the total bid value of the sale. The performance bond may be in the form of cash, irrevocable letter of credit, surety bond or certificate of deposit. The performance bond must be maintained separately from other payments for the duration of the sale contract. See the Timber Sale Contract for additional information.
6. The purchaser must submit an **Advance Stumpage Payment** prior to cutting any timber. The amount of the advance stumpage payment will be based on the expected harvest rate and the bid value of the stumpage. The advance stumpage payment may be in the form of cash, irrevocable letter of credit, payment bond or certificate of deposit.
7. At rates specified in the Contract, the purchaser will pay **Forest Improvement Fees** on all sawlog volume. All applicable **Road Use and/or Maintenance fees** will also be paid by the Purchaser in addition to stumpage payments.
8. This sale is being sold based on the gross weight of all species. Minimum price and bid price are on a per ton basis. Unless specified, the price applies to all species, green and dead. Price may vary by product. Billing will be based on gross weight. A weight ticket from a certified scale is required for each load hauled, regardless of product type.
9. The Dept has estimated the net scale merchantable sawlog volume to be available for purchase under this contract. Other products may be part of this sale. All delivered wood will be weighed and billed at per ton bid rates. The Dept recognizes that a percentage of delivered wood may not meet the log manufacturing and recovery standards of the timber sale contract. The actual percentage will vary based on the log manufacturing and recovery specifications of the purchaser and tree conditions in the sale area. The actual delivered weight may vary, resulting in an overrun or under-run of the estimated tonnage. The Dept strongly recommends that bidders evaluate these effects before bidding.
10. The Dept does not conduct detailed road appraisals. All appraised costs are gross estimates or averages, provided only to show the relative amount of work required, and not the true market value. The Dept strongly recommends that bidders make their own estimates based on contract requirements. Cost estimates provided are not guaranteed.
11. Bidders are encouraged to examine the complete Timber Sale Package and Sale Area prior to bidding. Additional information is available at the phone numbers shown above.
12. Estimates for sale volume, species percents, defect, product class, etc. provided in this prospectus and volume estimates listed in the sale contract are not guaranteed.
13. This prospectus is provided for information purposes only. If the prospectus is in error or contradicts the Timber Sale Contract, the contract governs.

Additional Sale Information:

1. New road construction completion date December 31, 2017 ***and prior*** to harvest operations of Unit #4-3_T.
2. Harvest Unit completion dates as per Table 3.

TABLE 3. HARVEST COMPLETION SCHEDULE		
Priority	Unit or Portion of Sale	Completion Date
1	4-1_T, 4-2_T, 10-1_T, 10-2_T	December 31, 2017
2	New Road Construction	December 31, 2017
3	4-3_T, 10-1_C, 10-2_C, 10-3_C	December 31, 2018

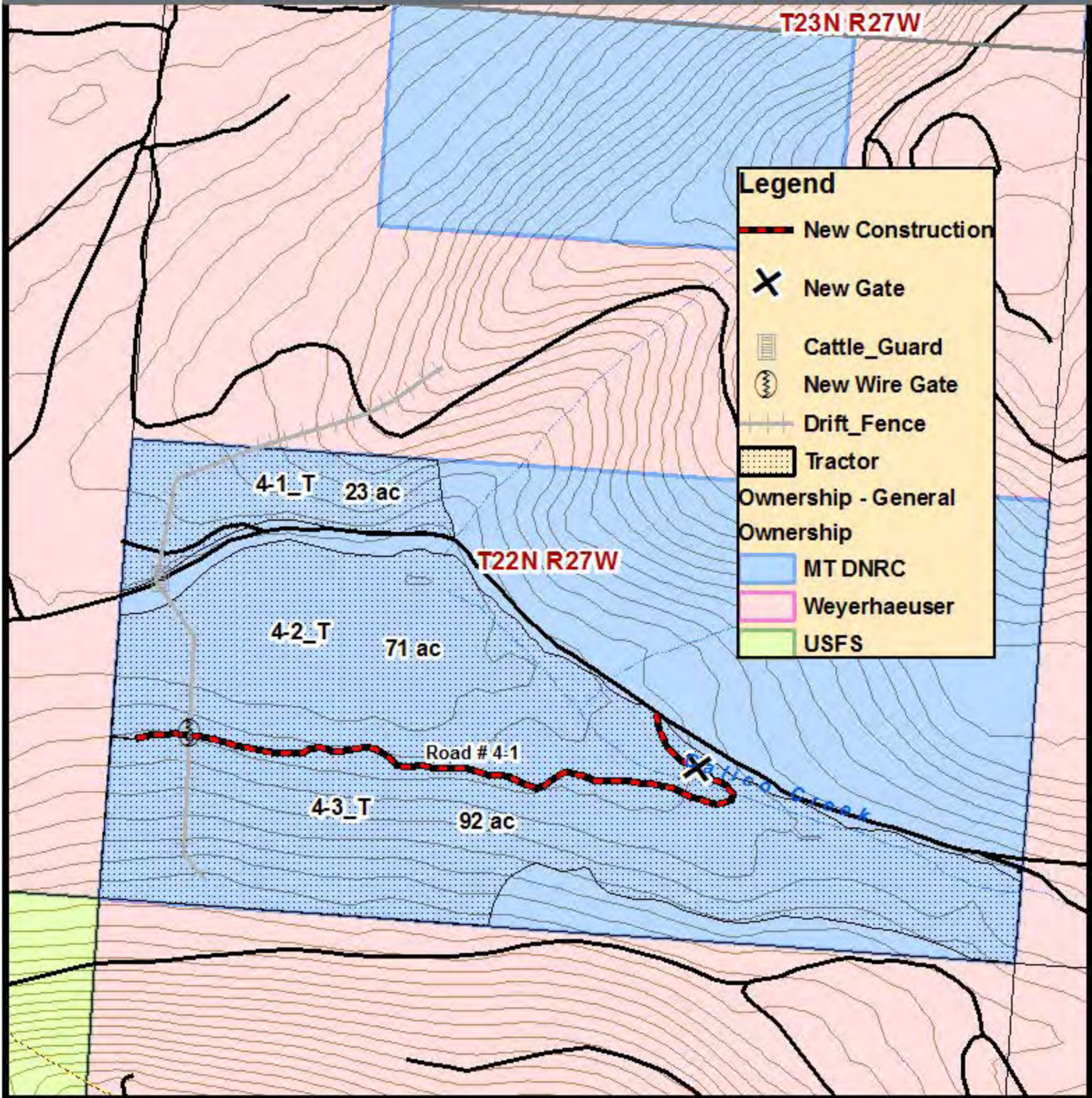
3. Operating Periods:
 - 1) Units 4-1T, 4-2T, 4-3T: June 16– March 31
 - 2) Units 10_1T, 10-2T: June 16 – April 14
 - 3) 10-1C, 10-2C, 10-3C: June 16 – April 14
4. Forest Improvement Fees to be billed concurrently with stumpage.

Timber Sale Information Sheet
Montana Department of Natural Resources and Conservation

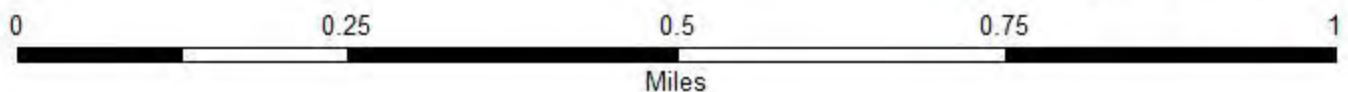
Lower Calico Fire Salvage										
Timber Sale Cruise Data										
SPECIES	PP	PP-D	DF	DF-D	WL	WL-D	LLP	LLP-D	GF L&D	TOTAL or AVE
Minimum Bid										\$13.11 per ton
Pounds per cubic foot	62	40	62	40	58	4	56.0	40.0	50.0	
Estimated tons of sawlogs (5.6" top DIB)	880	1,520	2,605	2,220	300	445	170	530	350	9,020 tons
Estimated tons of other material (pulp, etc)										0 tons
Gross MBF (Scribner 5.6" top DIB)	150	435	400	630	55	150	25	135	95	2,075 MBF
% Cull and Breakage	20.0%	23.0%	20.0%	32.5%	27.3%	33.3%	20.0%	29.6%	36.8%	27.0%
Net MBF (Scribner 5.6" top DIB)	120	335	320	425	40	100	20	95	60	1,515 MBF
Average logs per MBF	19.9	22.1	28.8	29.8	32.7	23.1	28.8	43.9	25.9	27.3 logs/M
Average DBH	12.7	13.4	11.3	12	10.4	13.4	9.9	9.5	14.2	11.9 in.
Average tons per acre harvested in leave-tree marked units										29 tons/ac
Average tons per acre harvested in cut-tree-marked units										0 tons/ac
Average MBF to cut per acre on the timber sale										4.9 MBF/ac
Range of cut trees per acre based on unit cruise										47-103
Calculated Sampling Error: Total cruised volume will fall between	1,280 and 1,750 Net MBF in 9 out of 10 cruises									15.5%
Tons Per Thousand Board Feet										
Contract Value - Estimated tons hauled per thousand Scribner board feet	9,020 estimated tons to a 5.6 inch top / 1,515 Net MBF Scribner to a 5.6 inch top DIB									5.95 tons/MBF

Contract Information	
Contract ending date	7/1/2019 Timing Restrictions: Section 4: April 1 – June 15 Section 10: April 15 – June 15 Harvest Completion 12/31/2018
Contract length	
Operating Season:	Outside of timing restrictions; only when Soil Compaction requirements in Section VII.H5 are met.

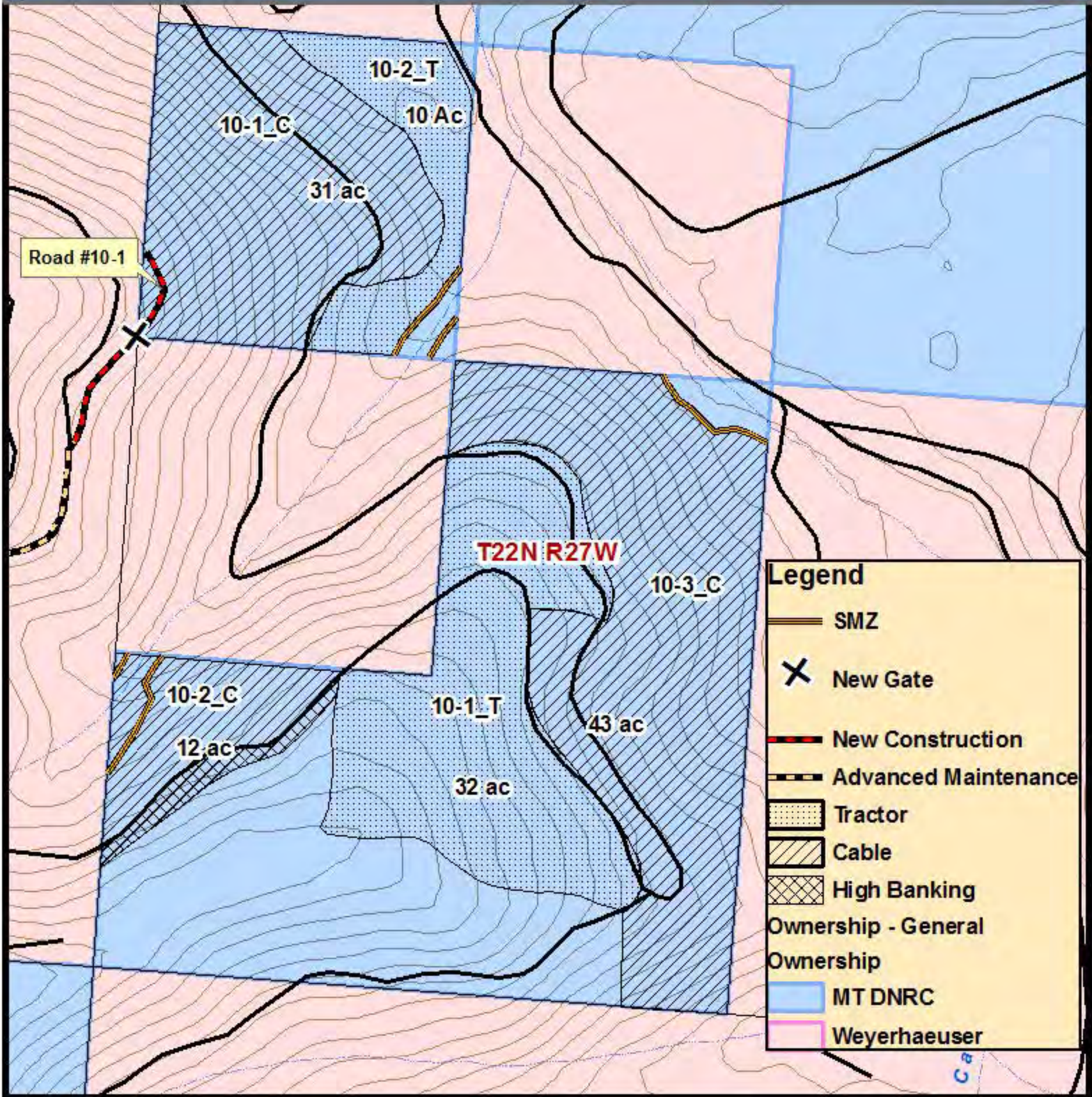
Lower Calico Fire Salvage S4 T22N R27W



Montana DNRC
Northwestern Land Office
Plains Unit dmp 11/16



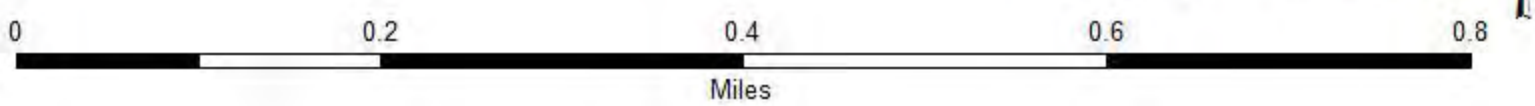
Lower Calico Fire Salvage S10 T22N R27W



Legend

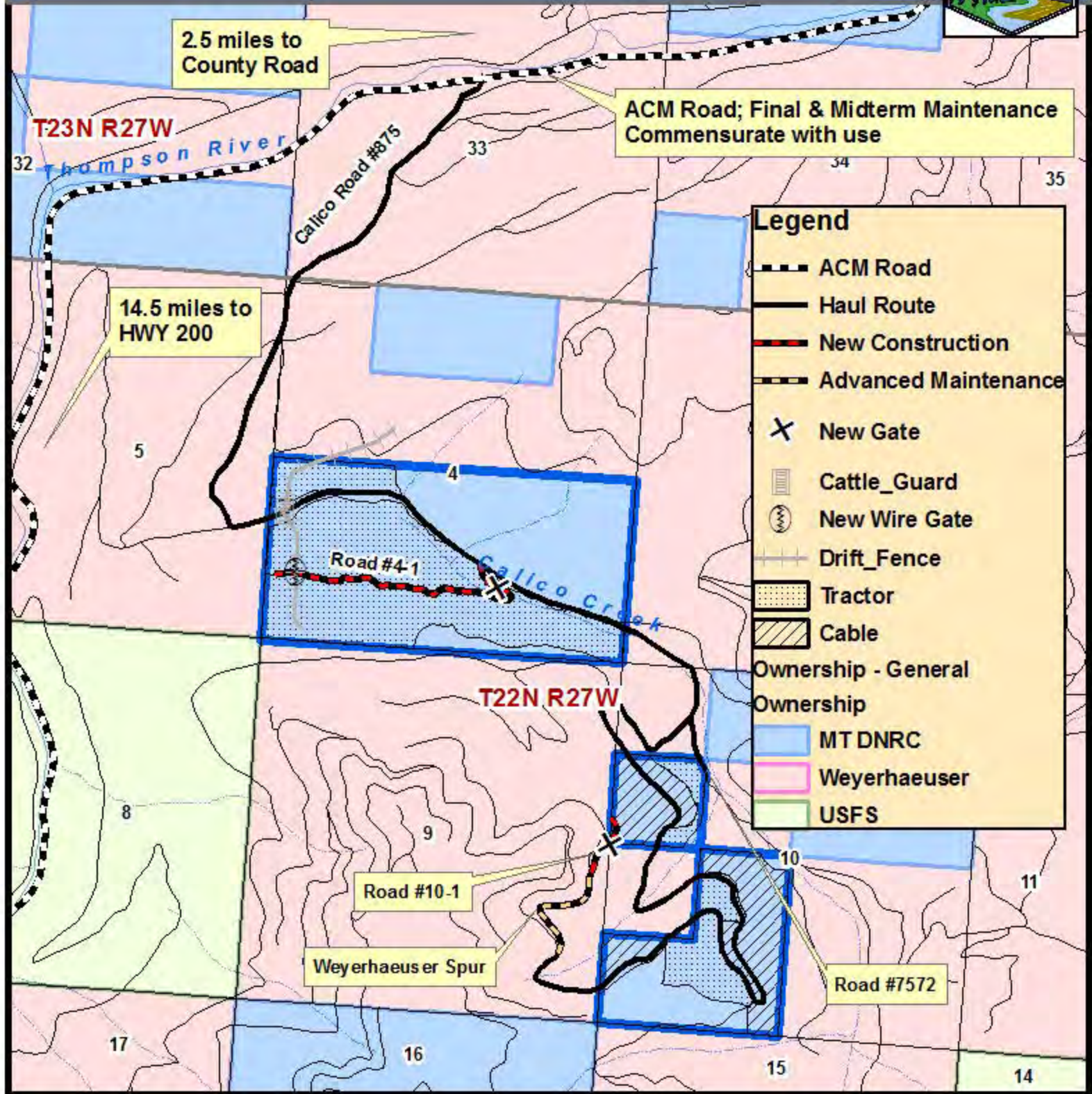
- SMZ
- New Gate
- New Construction
- Advanced Maintenance
- Tractor
- Cable
- High Banking
- Ownership - General
- Ownership
 - MT DNRC
 - Weyerhaeuser

Montana DNRC
Northwestern Land Office
Plains Unit dmp 11/16

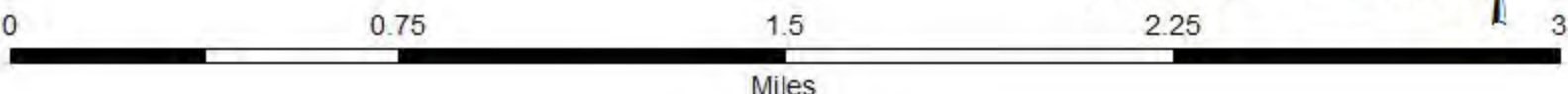


Lower Calico Fire Salvage: Transportation Plan

Sections 4 & 10 T22N R27W



Montana DNRC
 Northwestern Land Office
 Plains Unit dmp 11/16

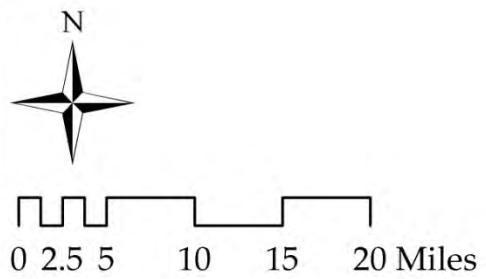
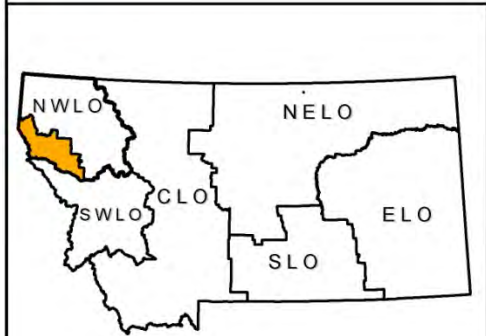


VICINITY MAP PLAINS UNIT



**Lower Calico Fire Salvage
Timber Sale**
Sections 4 & 10
T22N, R27W
dmp 10/16

- Towns
- Major Roads
- Rivers
- Water Bodies
- State Trust Land



Produced by Montana Department of Natural Resources and Conservation 2013
Datum: NAD 1983 Montana State Plane

