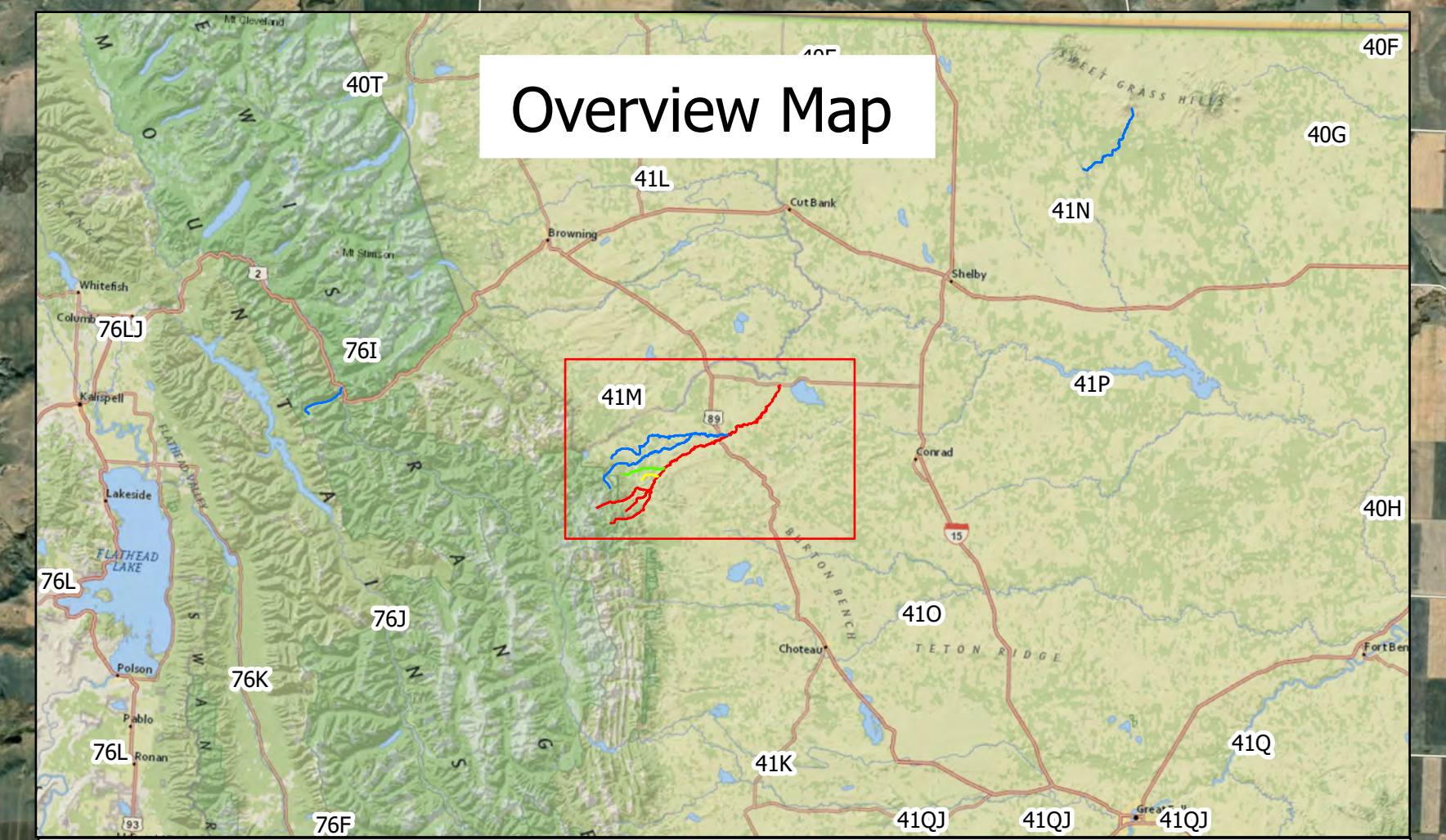
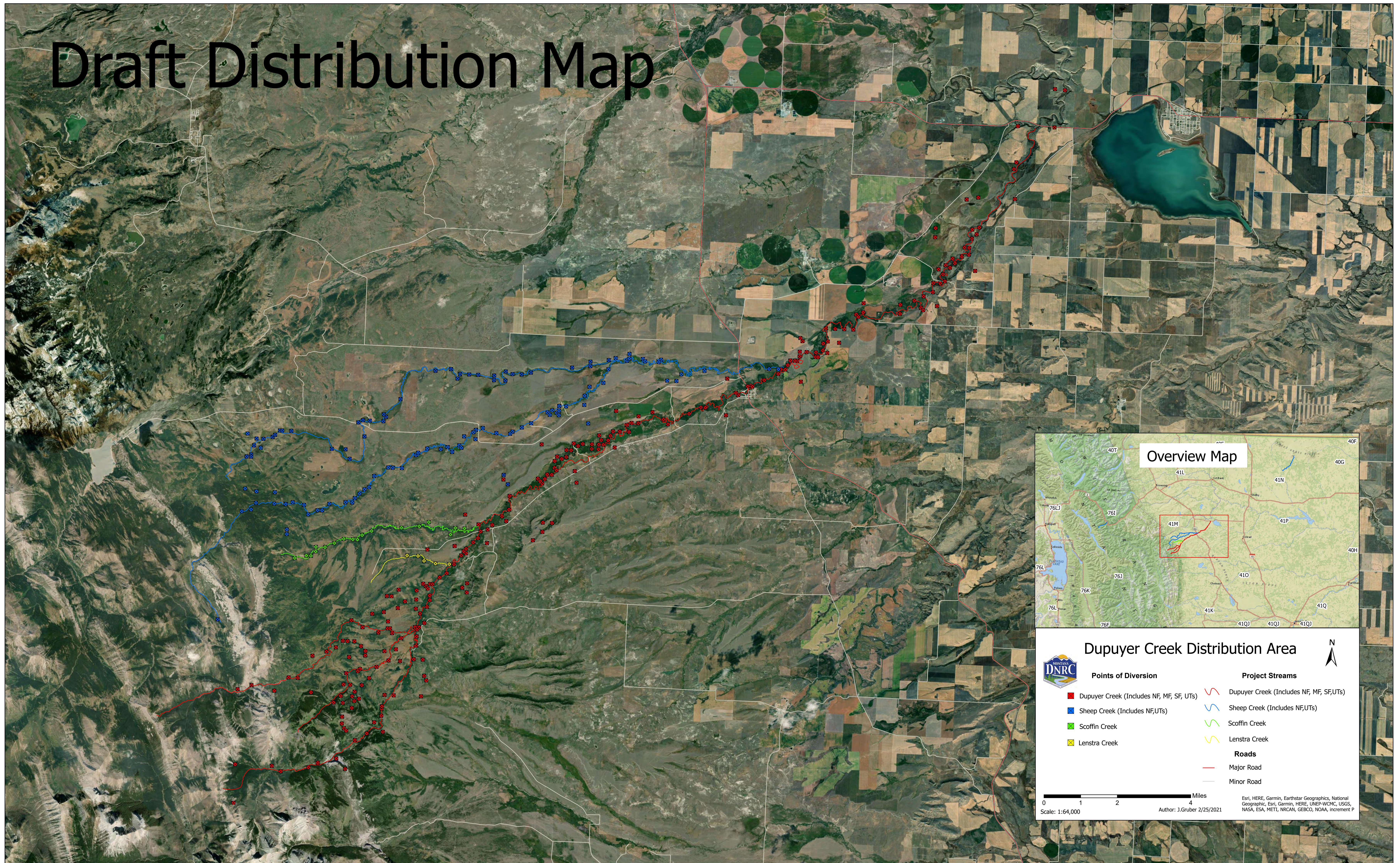












Draft Distribution Map





Dupuyer Creek Distribution Area

Points of Diversion	Project Streams
 Dupuyer Creek (Includes NF, MF, SF, UTs)	 Dupuyer Creek (Includes NF, MF, SF, UTs)
 Sheep Creek (Includes NF, UTs)	 Sheep Creek (Includes NF, UTs)
 Scoffin Creek	 Scoffin Creek
 Lenstra Creek	 Lenstra Creek

Roads

 Major Road
 Minor Road

0 1 2 4 Miles
Scale: 1:64,000
Author: J.Gruber 2/25/2021
Esri, HERE, Garmin, Earthstar Geographics, National Geographic, Esri, Garmin, HERE, UNEP-WCMC, USGS, NASA, ESA, METI, NRCAN, GEBCO, NOAA, increment P