



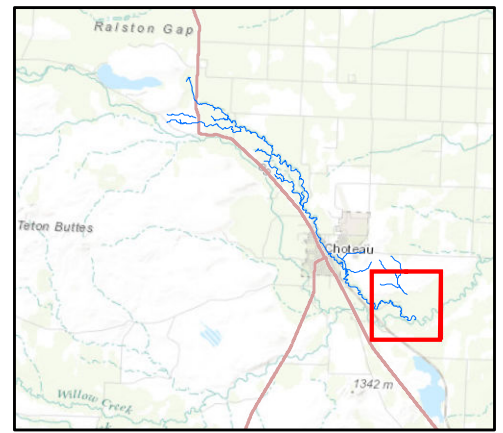




Spring Creek Diversion Sites

Basin 410 Post Decree Administration Area

-  Points of Diversion
-  Primary Road
-  Project Streams
-  Secondary Road



Aerial Photos: 2013 Color NAIP
Topographic Information: USGS 24K

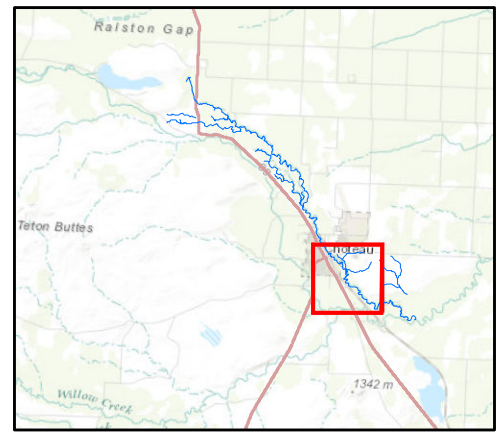




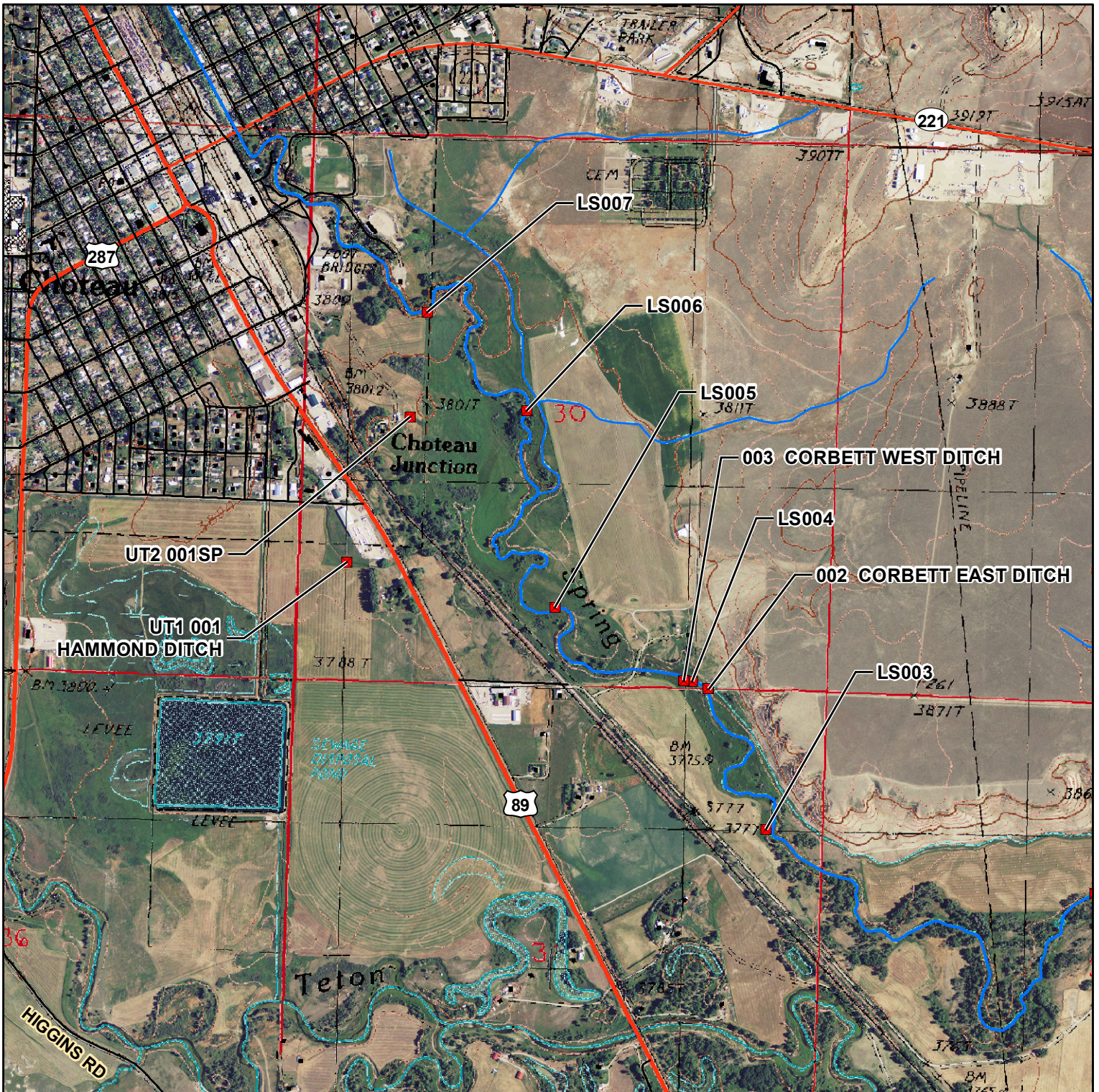
Spring Creek Diversion Sites

Basin 410 Post Decree Administration Area

- Points of Diversion
- Primary Road
- Project Streams
- Secondary Road



Aerial Photos: 2013 Color NAIP
Topographic Information: USGS 24K

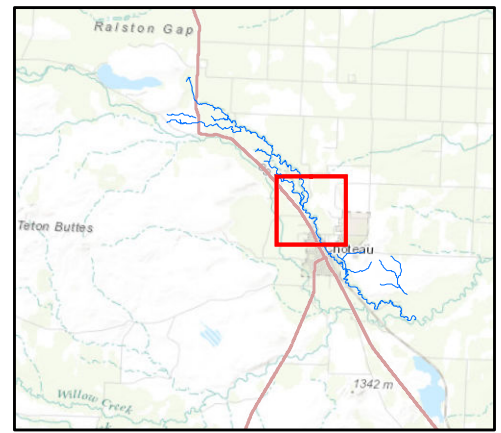




Spring Creek Diversion Sites

Basin 410 Post Decree Administration Area

- Points of Diversion
- ~ Project Streams
- ~ Primary Road
- ~ Secondary Road



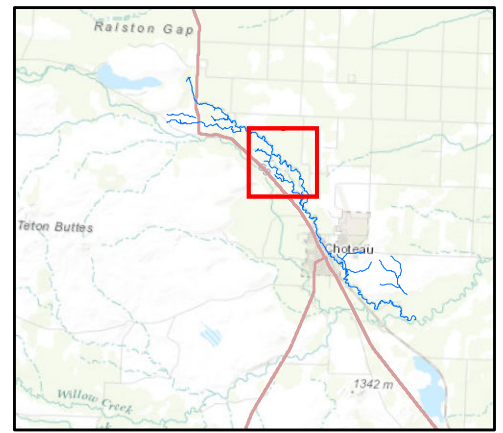
Aerial Photos: 2013 Color NAIP
Topographic Information: USGS 24K





Spring Creek Diversion Sites

Basin 410 Post Decree Administration Area



- Points of Diversion
- Primary Road
- Project Streams
- Secondary Road







Aerial Photos: 2013 Color NAIP
Topographic Information: USGS 24K

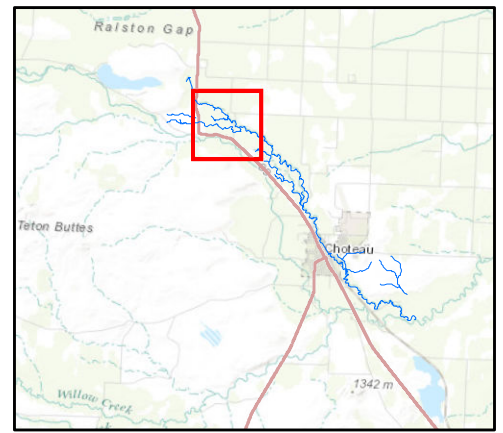




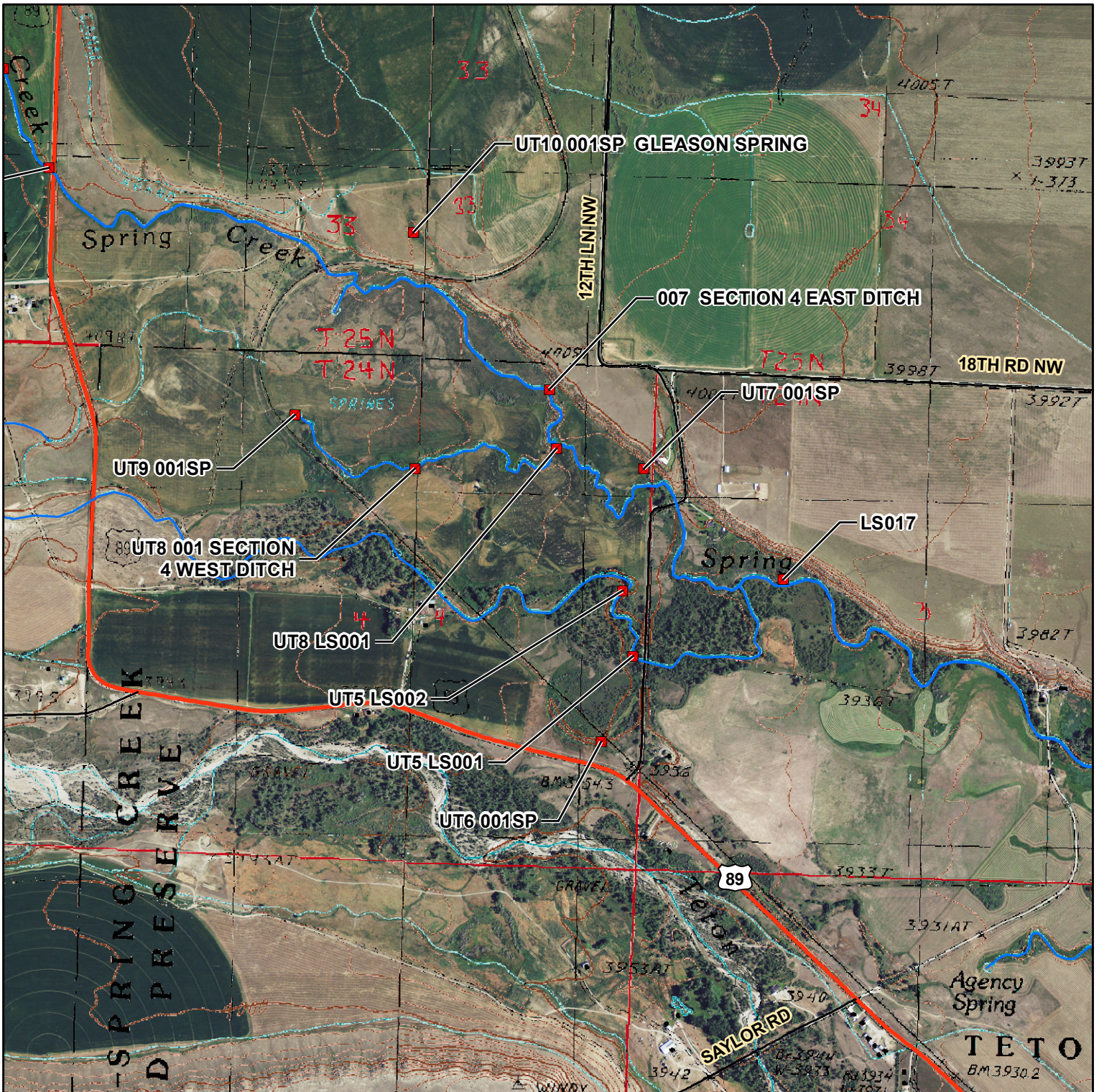
Spring Creek Diversion Sites

Basin 410 Post Decree Administration Area

-  Points of Diversion
-  Primary Road
-  Project Streams
-  Secondary Road







Aerial Photos: 2013 Color NAIP
Topographic Information: USGS 24K

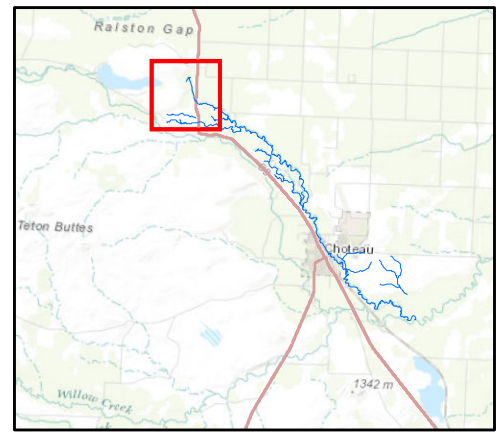




Spring Creek Diversion Sites

Basin 410 Post Decree Administration Area

-  Points of Diversion
-  Primary Road
-  Project Streams
-  Secondary Road



Aerial Photos: 2013 Color NAIP
Topographic Information: USGS 24K

