

E053 Staubach and Beaver Creek Map Index

Basin 41I Post Decree Administration Area



Map Extent and Page Number



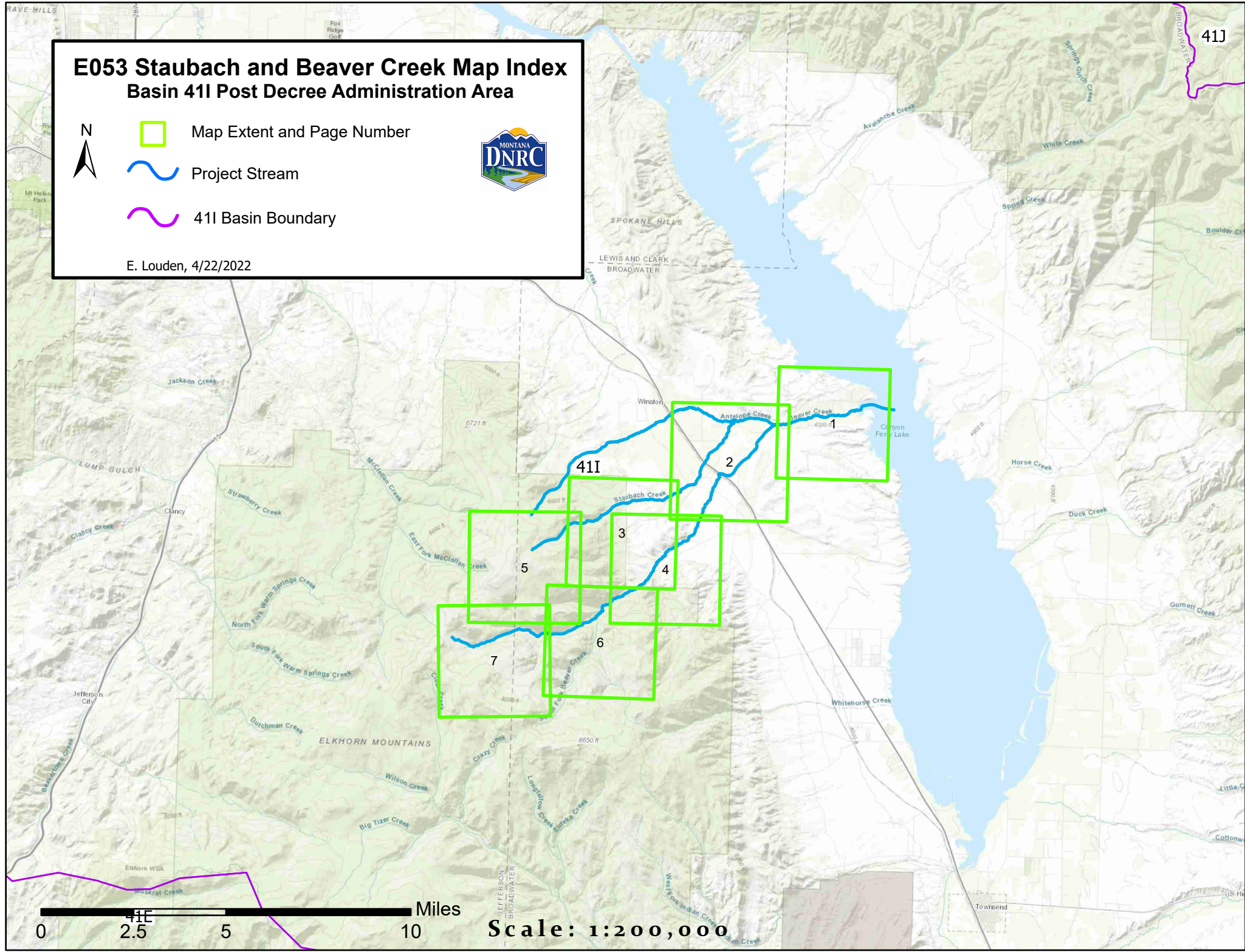
Project Stream



41I Basin Boundary



E. Louden, 4/22/2022



Scale: 1:200,000

E053 Beaver Creek and Staubach Creek Diversion Sites

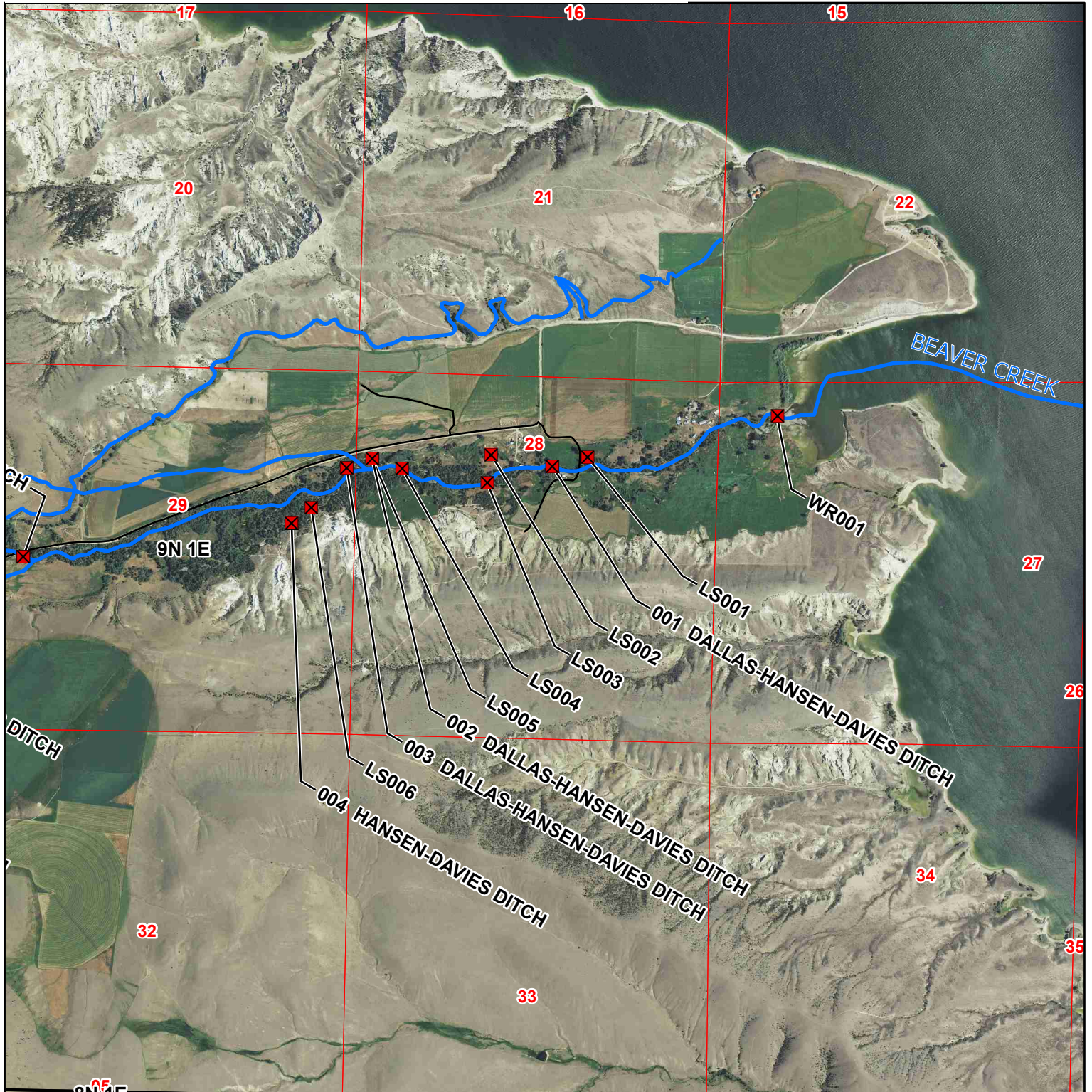
Basin 411 Post Decree Administration Area

- ✖ Points of Diversion
- ~ Primary Road
- ~ Project Streams
- ~ Secondary Road

Page 1 of 7



Aerial Photos: 2013 Color NAIP
Topographic Information: USGS 24K



0 0.13 0.25 0.5 0.75 1 Miles

1:24,000

E. Loudon 04/19/2022

E053 Beaver Creek and Staubach Creek Diversion Sites

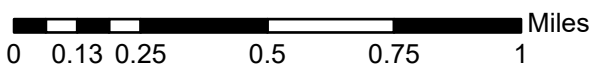
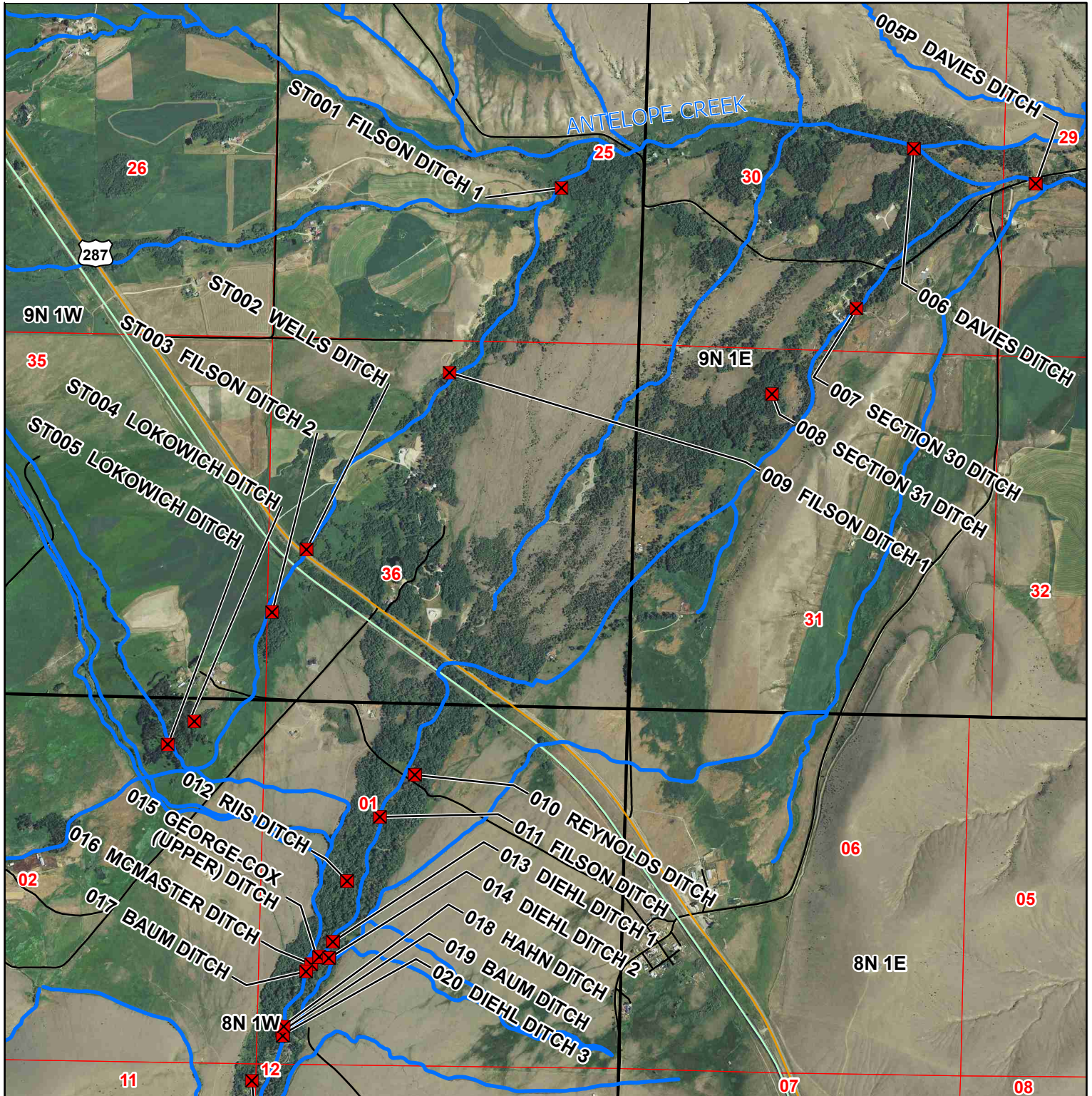
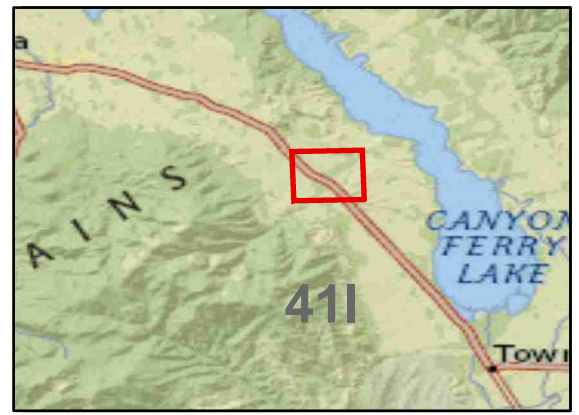
Basin 411 Post Decree Administration Area

- ✖ Points of Diversion
- ~ Primary Road
- ~ Project Streams
- ~ Secondary Road

Page 2 of 7



Aerial Photos: 2013 Color NAIP
Topographic Information: USGS 24K



1:24,000

E. Louden 04/19/2022

E053 Beaver Creek and Staubach Creek Diversion Sites

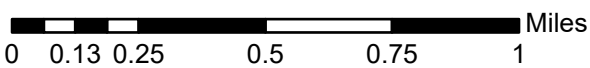
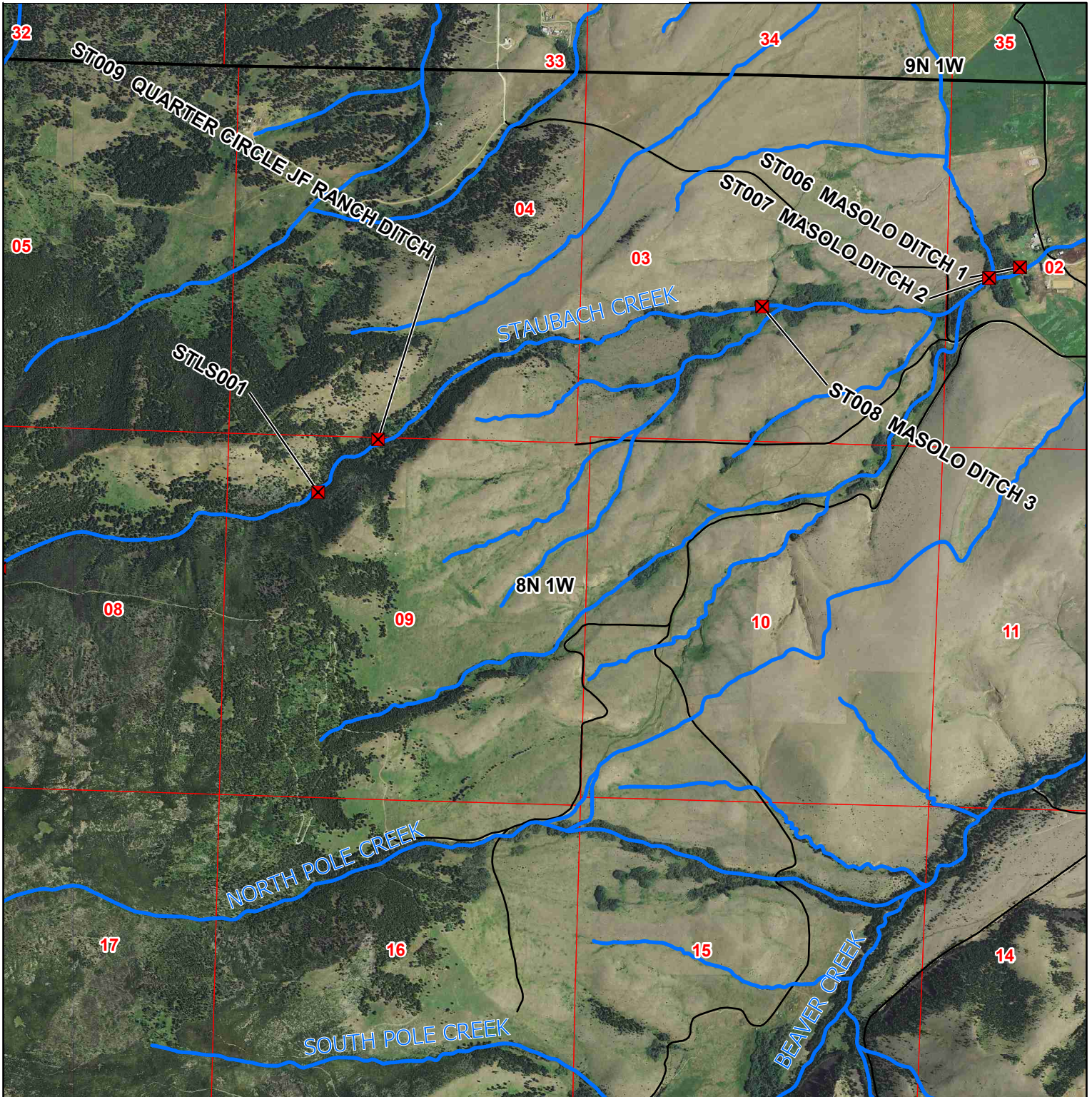
Basin 411 Post Decree Administration Area

- ✖ Points of Diversion
- ~ Primary Road
- ~ Project Streams
- ~ Secondary Road

Page 3 of 7



Aerial Photos: 2013 Color NAIP
Topographic Information: USGS 24K



1:24,000

E. Louden 04/19/2022

E053 Beaver Creek and Staubach Creek Diversion Sites

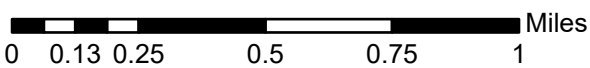
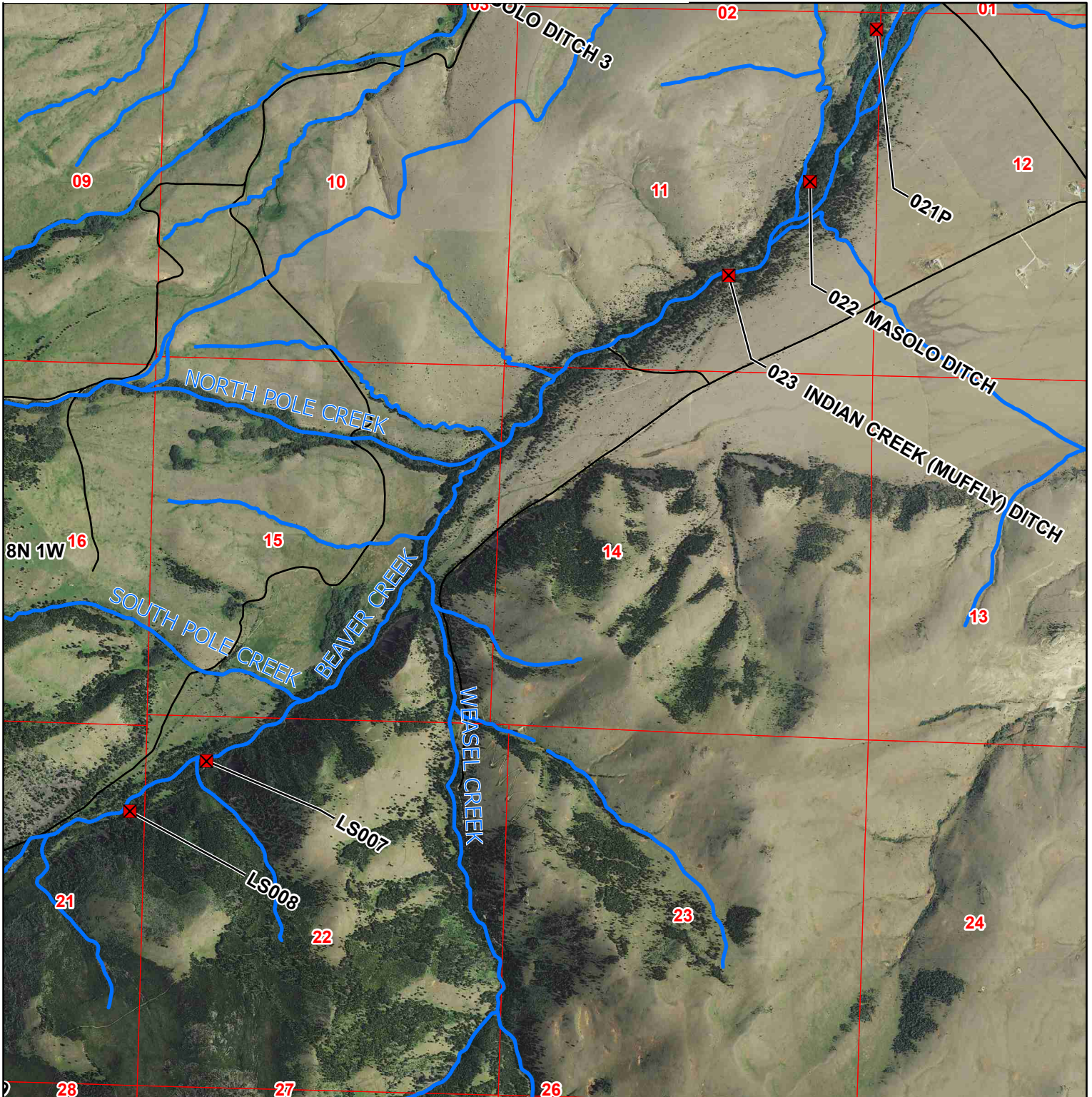
Basin 411 Post Decree Administration Area

- ✖ Points of Diversion
- ~ Primary Road
- ~ Project Streams
- ~ Secondary Road

Page 4 of 7



Aerial Photos: 2013 Color NAIP
Topographic Information: USGS 24K



1:24,000

E. Louden 04/19/2022

E053 Beaver Creek and Staubach Creek Diversion Sites

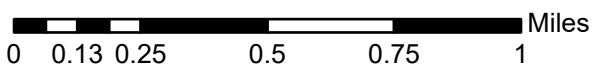
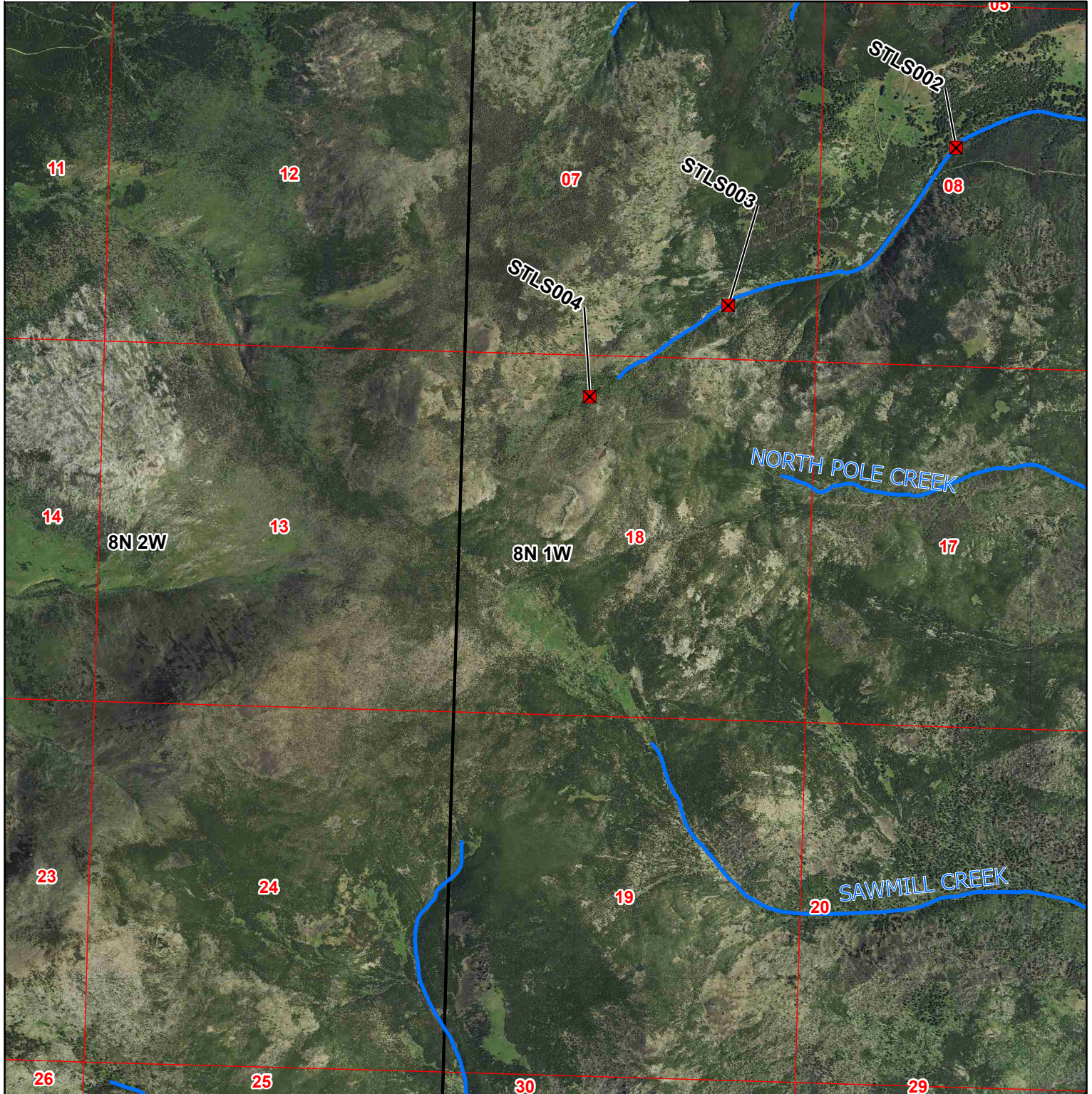
Basin 411 Post Decree Administration Area

Page 5 of 7



- ☒ Points of Diversion
- ~ Primary Road
- ~ Project Streams
- ~ Secondary Road

Aerial Photos: 2013 Color NAIP
Topographic Information: USGS 24K



1:24,000

E. Loudon 04/19/2022

E053 Beaver Creek and Staubach Creek Diversion Sites

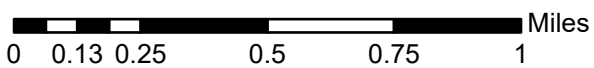
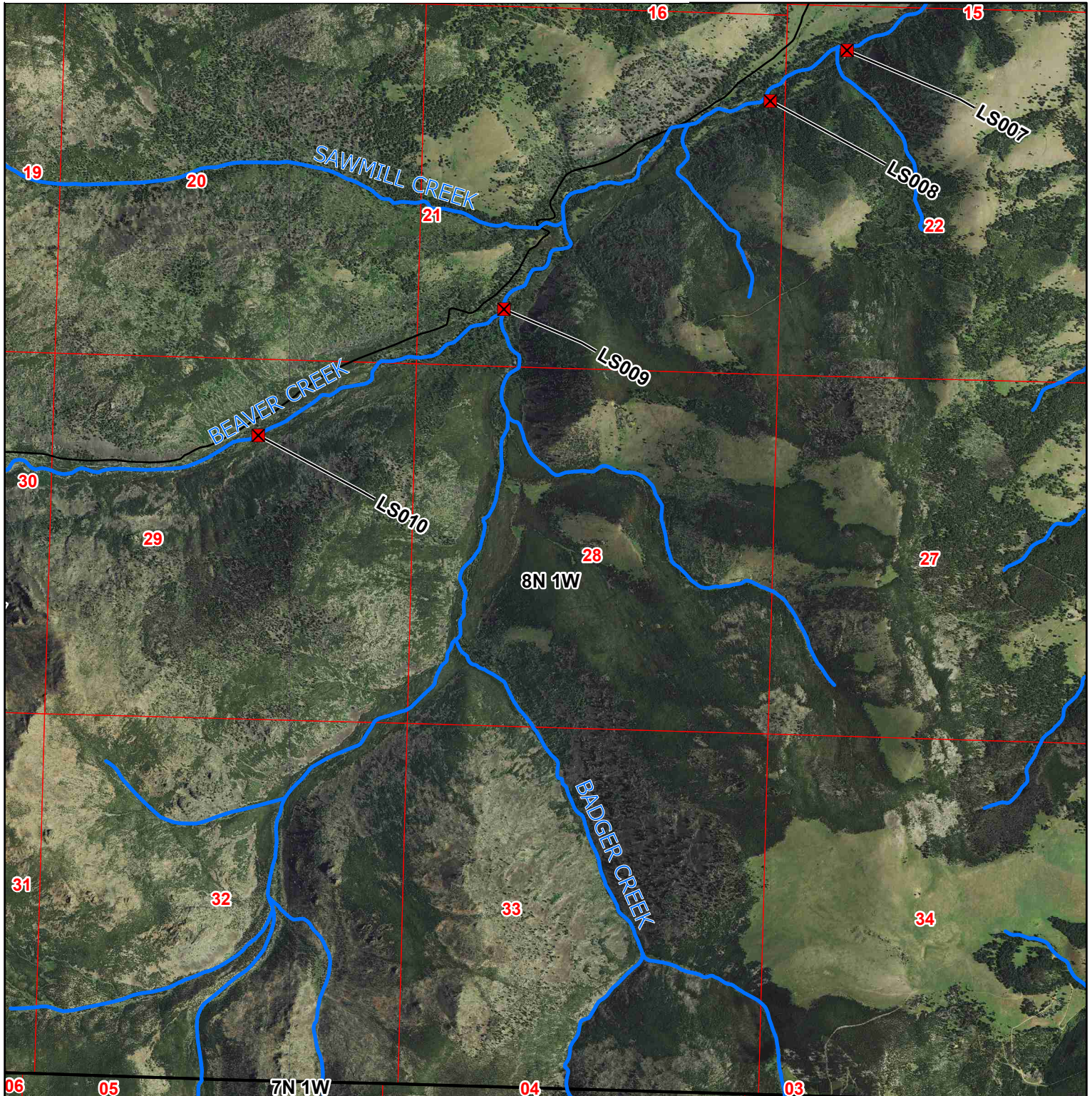
Basin 411 Post Decree Administration Area

- ✖ Points of Diversion
- ~ Primary Road
- ~ Project Streams
- ~ Secondary Road

Page 6 of 7



Aerial Photos: 2013 Color NAIP
Topographic Information: USGS 24K



1:24,000

E. Louden 04/19/2022

E053 Beaver Creek and Staubach Creek Diversion Sites

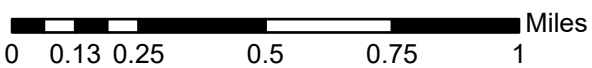
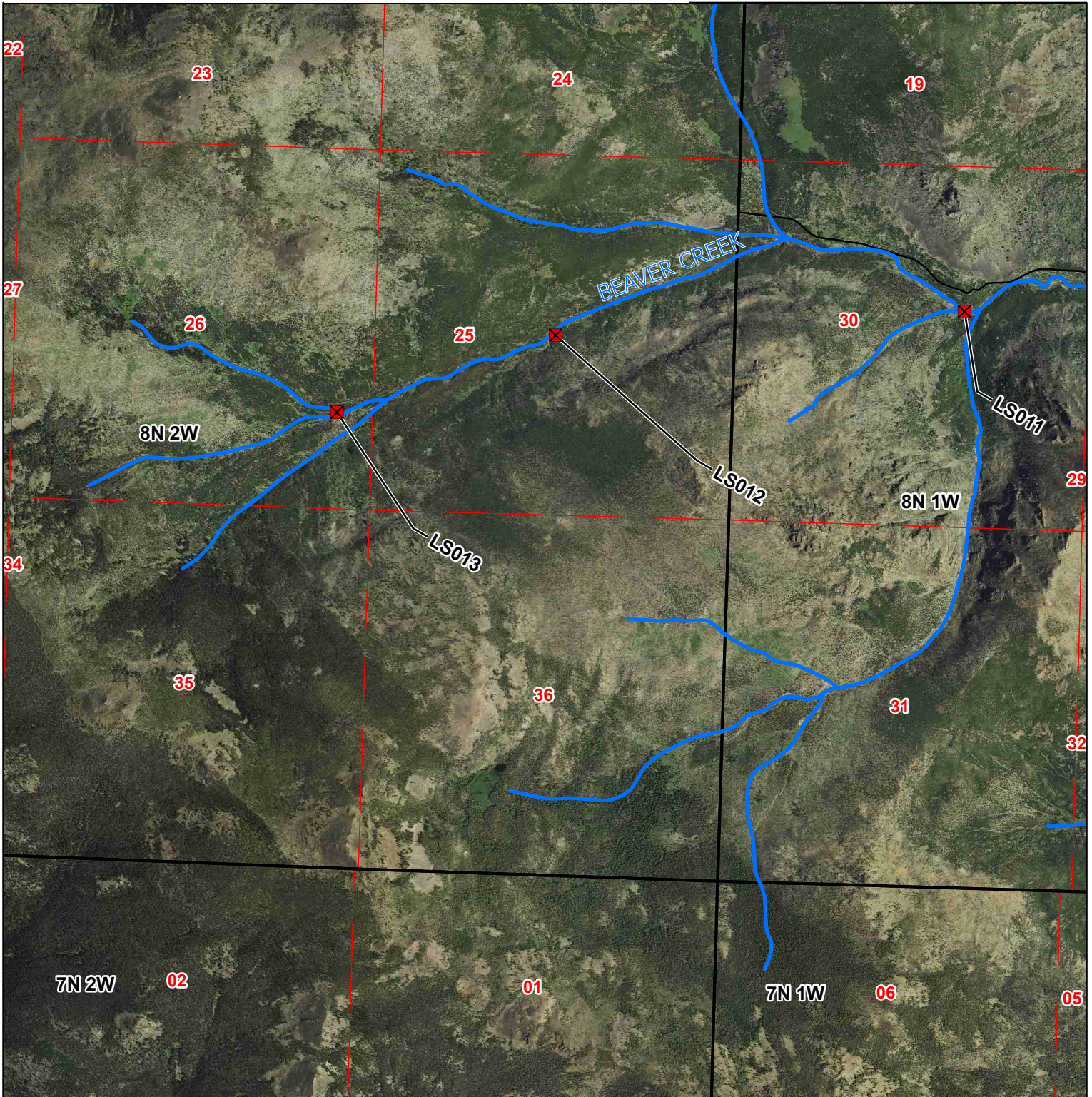
Basin 411 Post Decree Administration Area

- ✖ Points of Diversion
- ~ Primary Road
- ~ Project Streams
- ~ Secondary Road

Page 7 of 7



Aerial Photos: 2013 Color NAIP
Topographic Information: USGS 24K



1:24,000

E. Louden 04/19/2022