



De Rozier Creek Diversion Sites

Basin 76D Post Decree Administration Area

J.G. 02/09/2017



▣ Points of Diversion

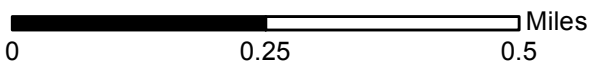
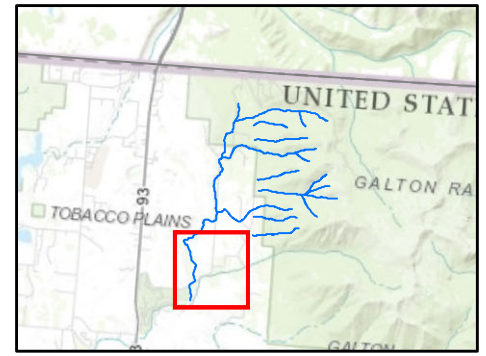
— Primary Road

~ Project Streams

~ Secondary Road

Page 1 of 3

Aerial Photos: 2013 Color NAIP
Topographic Information: USGS 24K



1:12,000



De Rozier Creek Diversion Sites

Basin 76D Post Decree Administration Area

J.G. 02/09/2017



▣ Points of Diversion

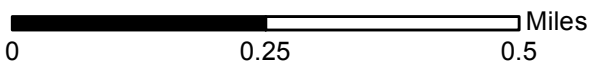
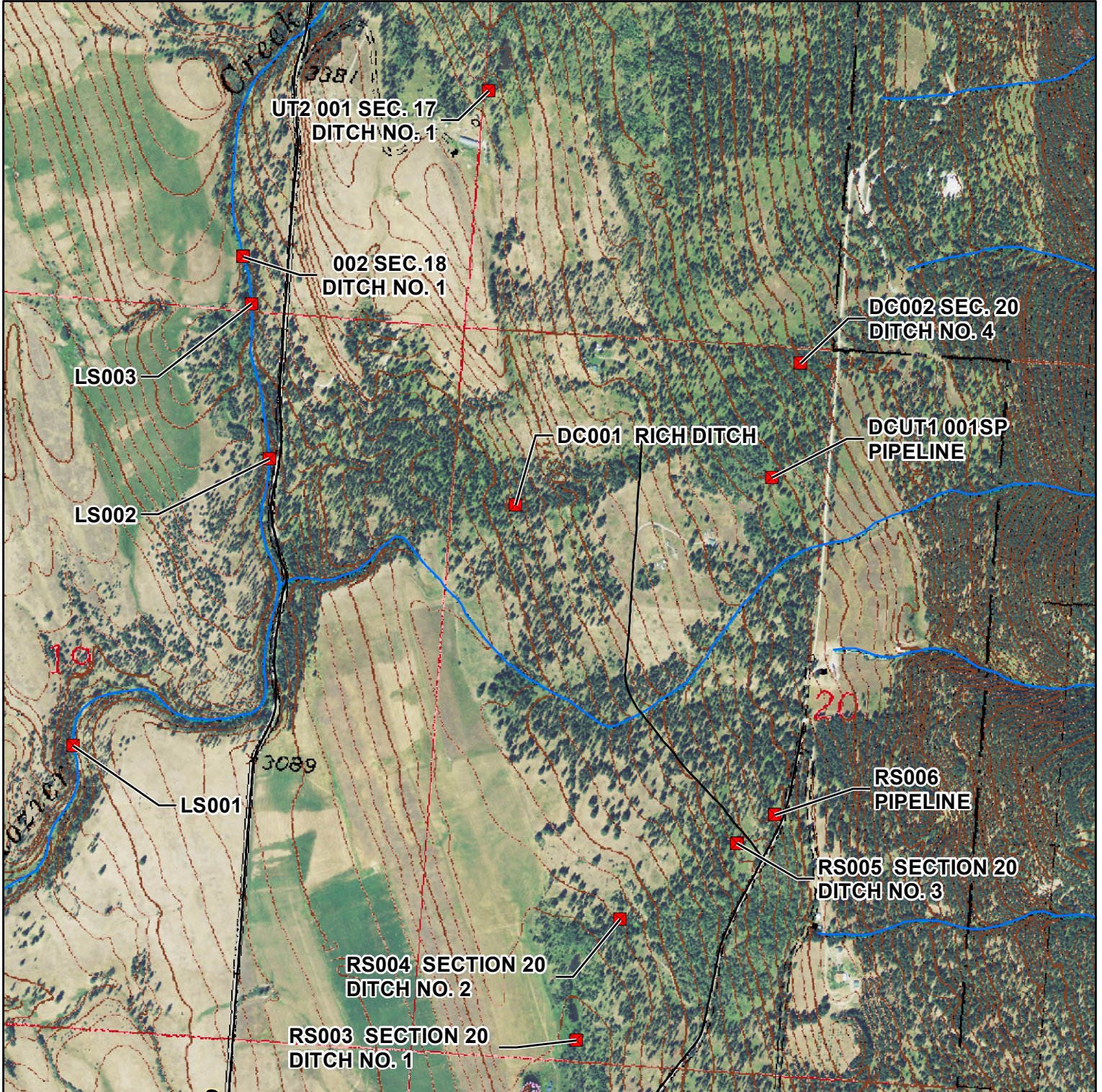
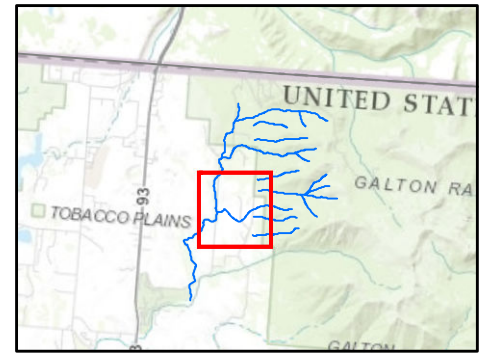
~ Project Streams

— Primary Road

~ Secondary Road

Page 2 of 3

Aerial Photos: 2013 Color NAIP
Topographic Information: USGS 24K



1:12,000



De Rozier Creek Diversion Sites

Basin 76D Post Decree Administration Area

J.G. 02/09/2017



▣ Points of Diversion

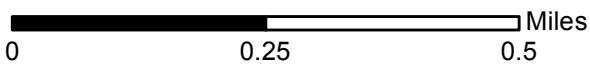
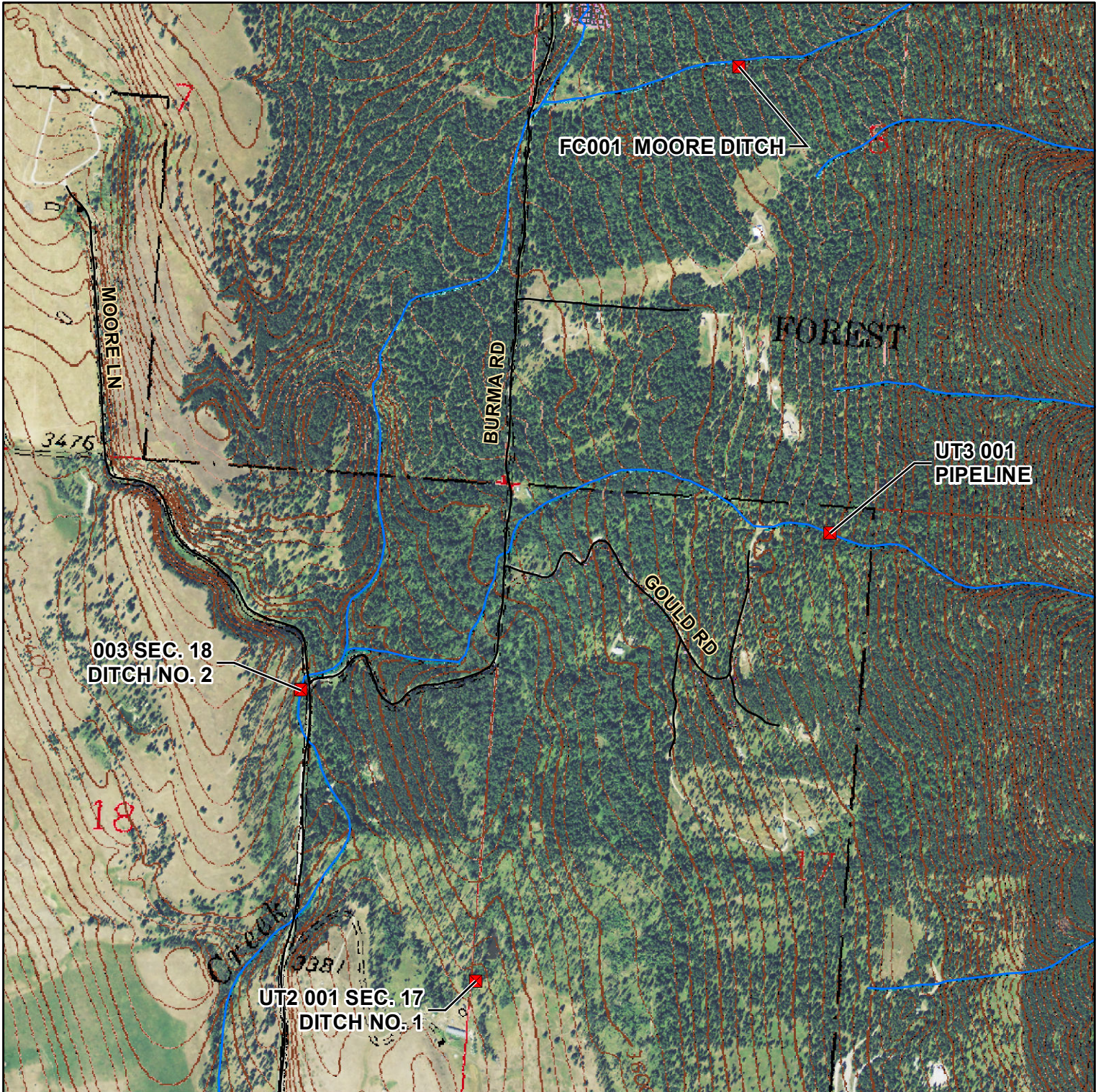
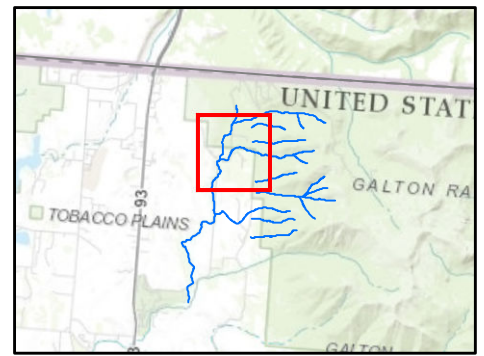
~ Project Streams

— Primary Road

~ Secondary Road

Page 3 of 3

Aerial Photos: 2013 Color NAIP
Topographic Information: USGS 24K



1:12,000