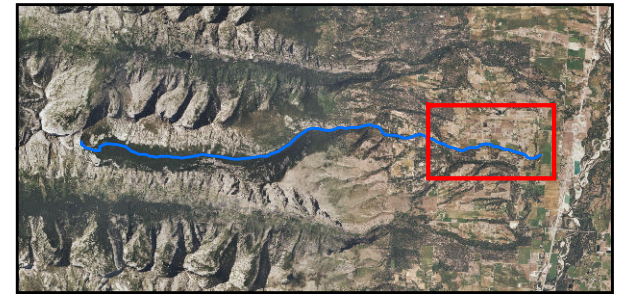




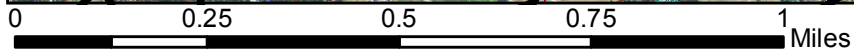
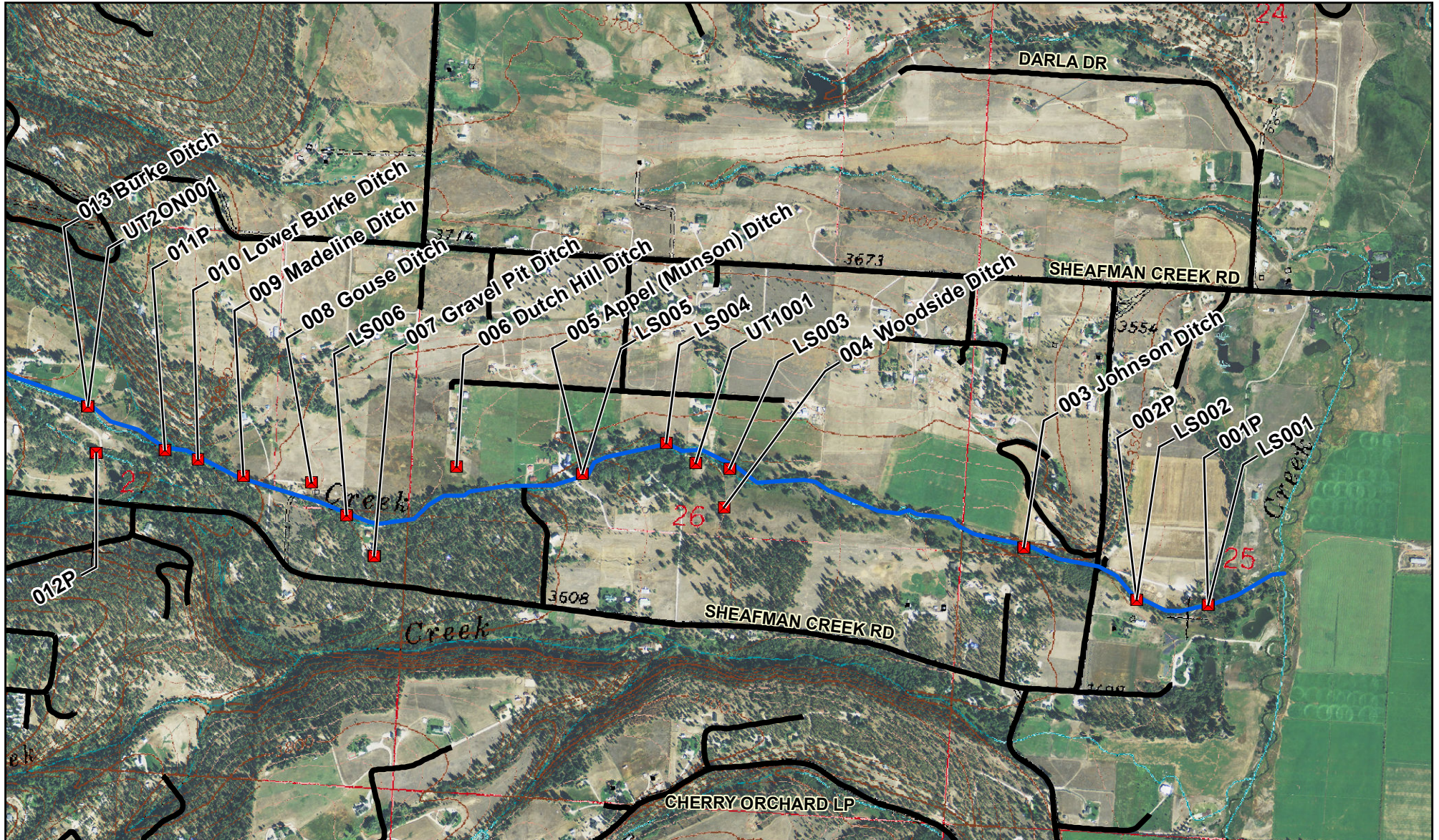
Sheafman Creek Diversion Sites

Basin 76HF Post Decree Administration Area



- Primary Point of Diversion
- ▲ Secondary Point of Diversion
- ~ Project Streams
- ~ Primary Road
- ~ Secondary Road

Aerial Photos: 2013 Color NAIP
Topographic Information: USGS 24K



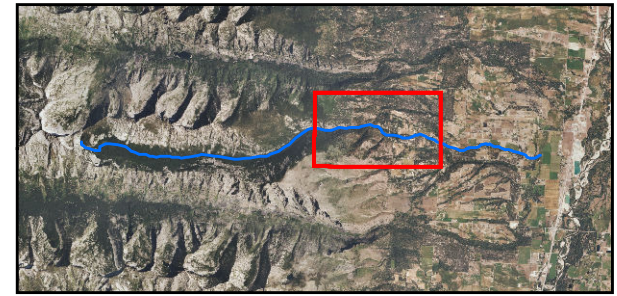
1:15,840

1 in = 0.25 miles



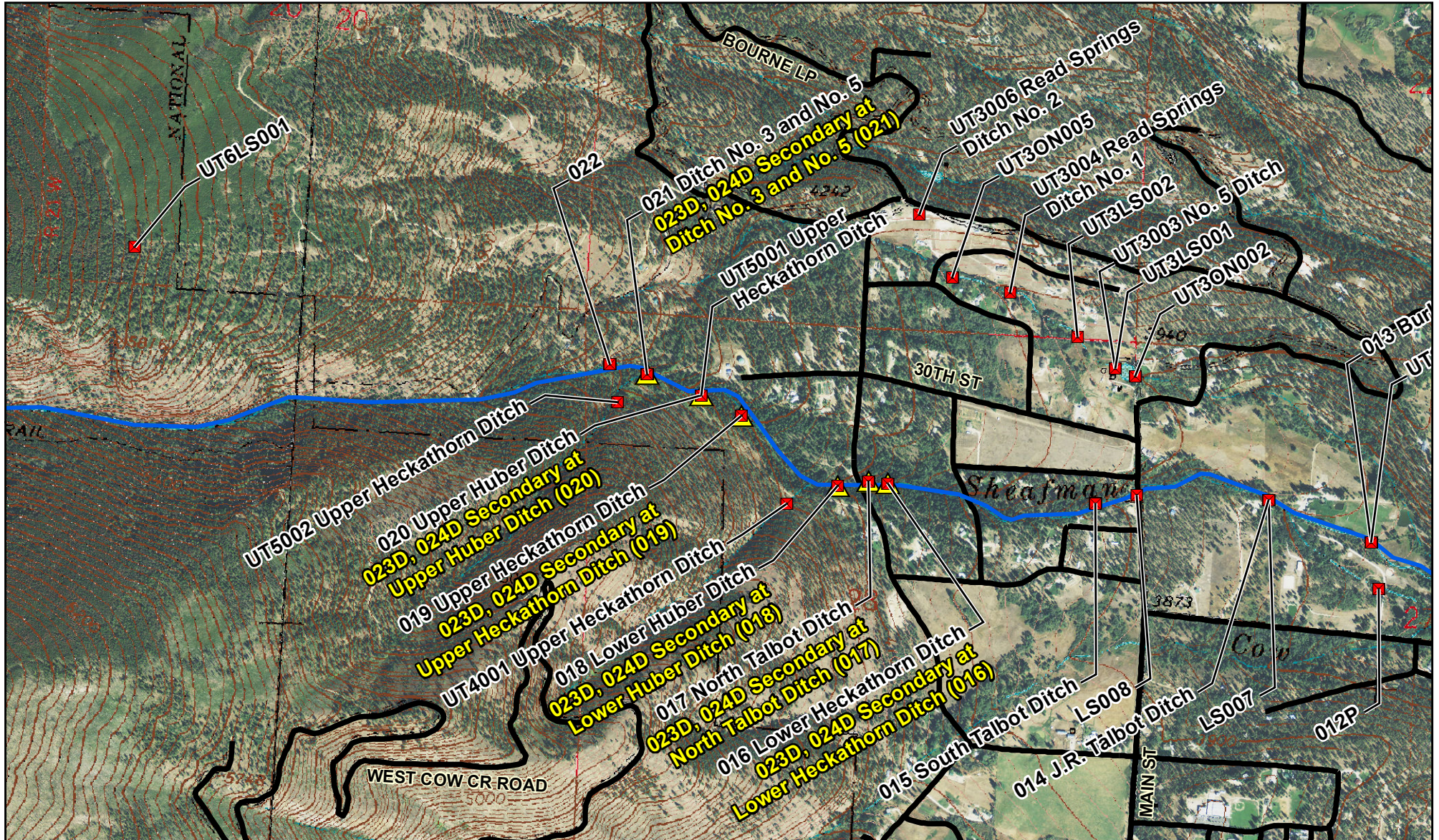
Sheafman Creek Diversion Sites

Basin 76HF Post Decree Administration Area



- Primary Point of Diversion
- ▲ Secondary Point of Diversion
- ~ Project Streams
- ~ Primary Road
- ~ Secondary Road

Aerial Photos: 2013 Color NAIP
Topographic Information: USGS 24K



0 0.25 0.5 0.75 1 Miles

1:15,840

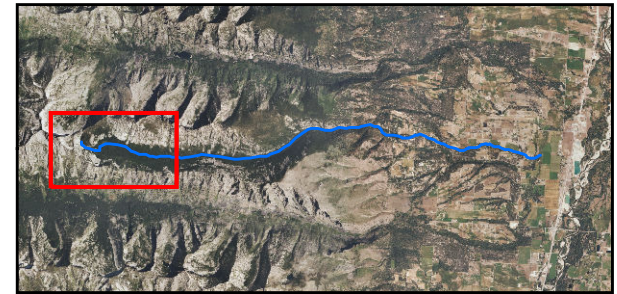
1 in = 0.25 miles

K. McLane -- 03/11/2015



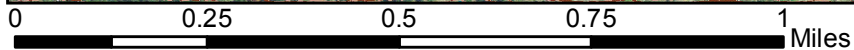
Sheafman Creek Diversion Sites

Basin 76HF Post Decree Administration Area



- Primary Point of Diversion
- ▲ Secondary Point of Diversion
- 🌊 Project Streams
- 🛣️ Primary Road
- 🛤️ Secondary Road

Aerial Photos: 2013 Color NAIP
Topographic Information: USGS 24K



1:15,840

1 in = 0.25 miles