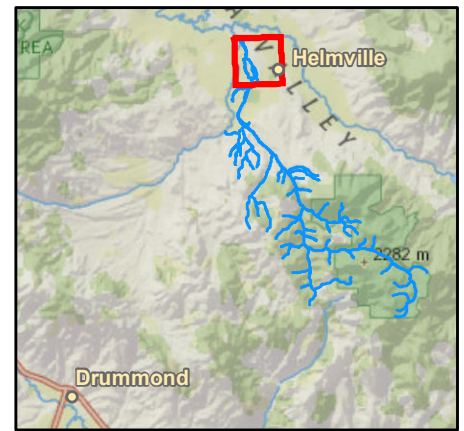




Cottonwood Creek Diversion Sites

Basin 76F Water Distribution Project



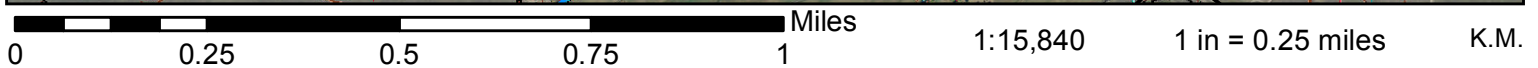
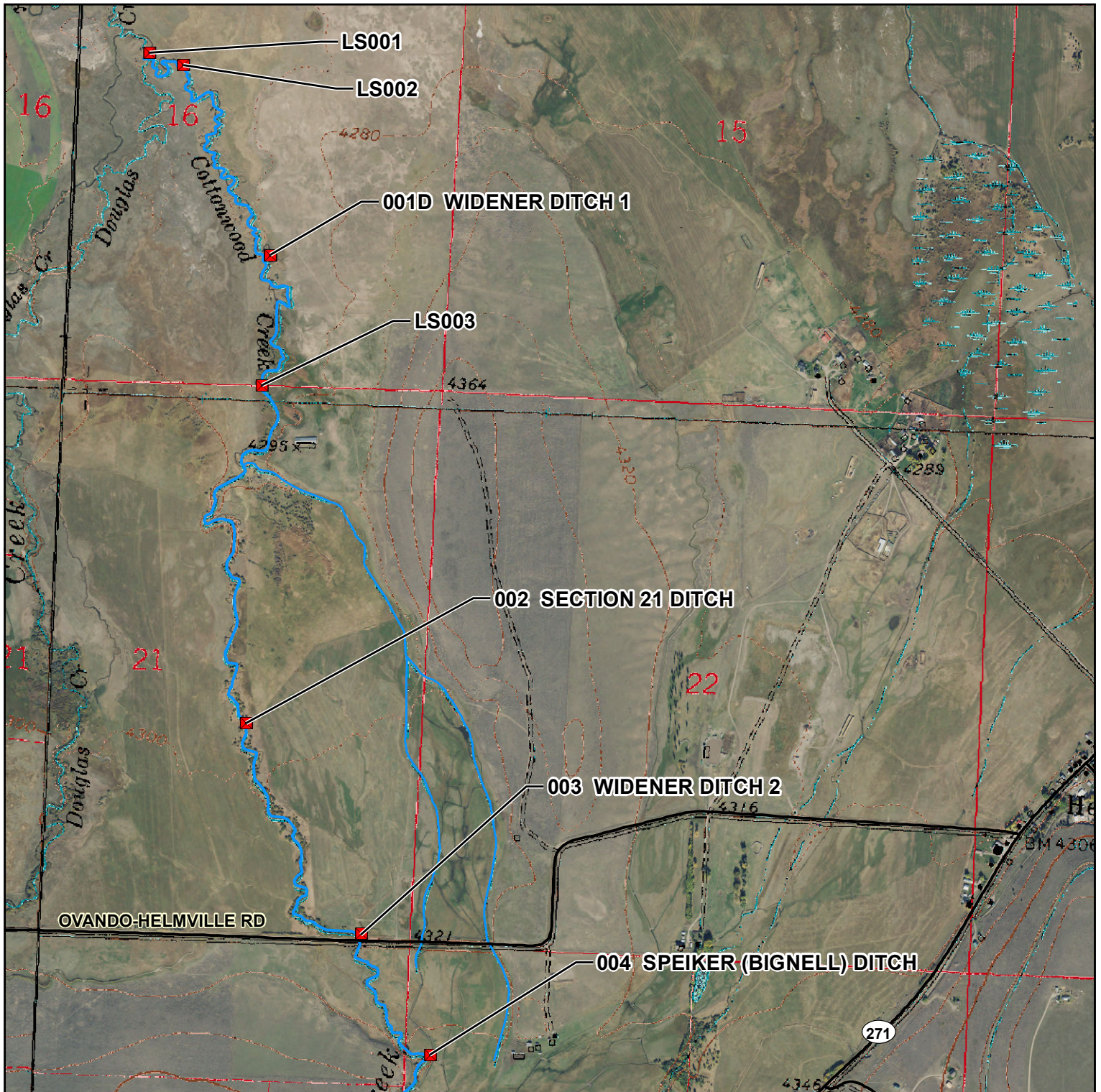
04/15/2016



- Primary Points of Diversion
- ~ Project Streams
- ▲ Secondary Points of Diversion
- ~ Primary Road
- ~ Secondary Road

Page 1 of 6

Aerial Photos: 2015 Color NAIP
Topographic Information: USGS 24K





Cottonwood Creek Diversion Sites

Basin 76F Water Distribution Project

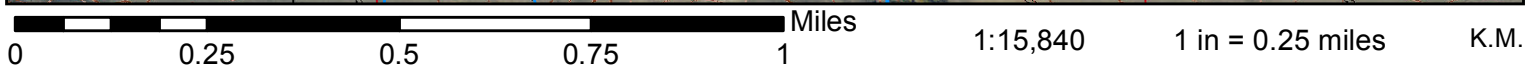
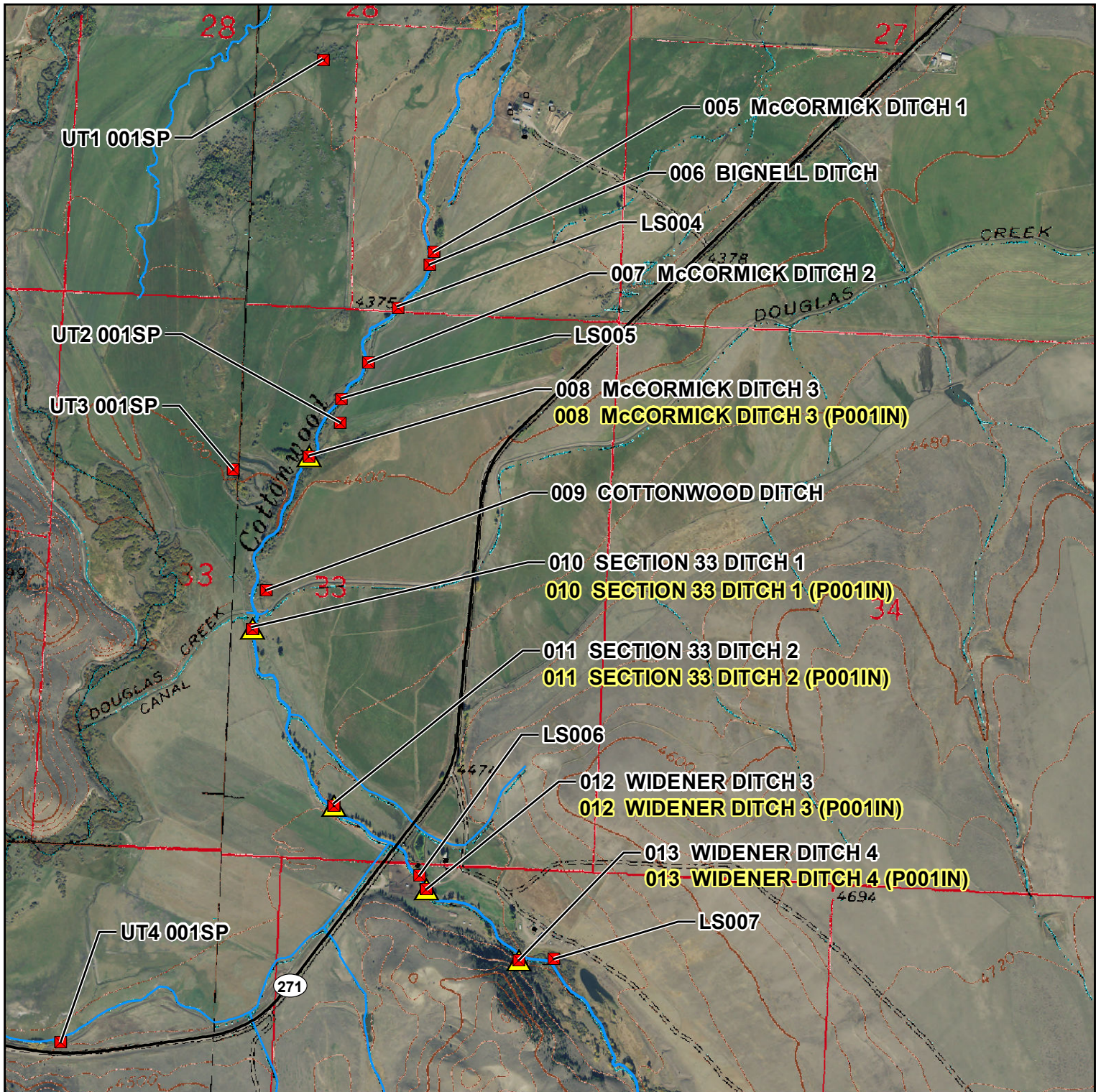
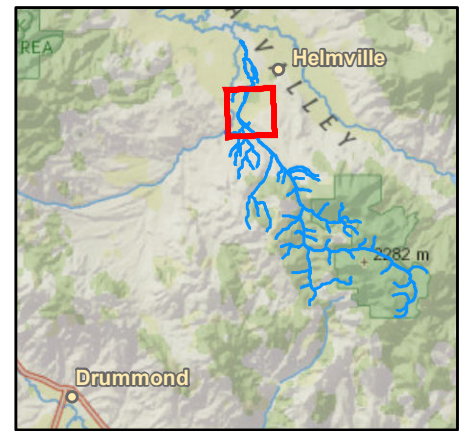
04/15/2016



Page 2 of 6

- Primary Points of Diversion
- ▲ Secondary Points of Diversion
- ~ Project Streams
- ~ Primary Road
- ~ Secondary Road

Aerial Photos: 2015 Color NAIP
Topographic Information: USGS 24K





Cottonwood Creek Diversion Sites

Basin 76F Water Distribution Project

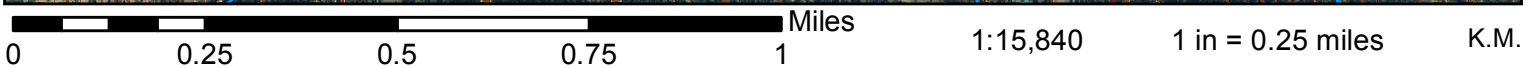
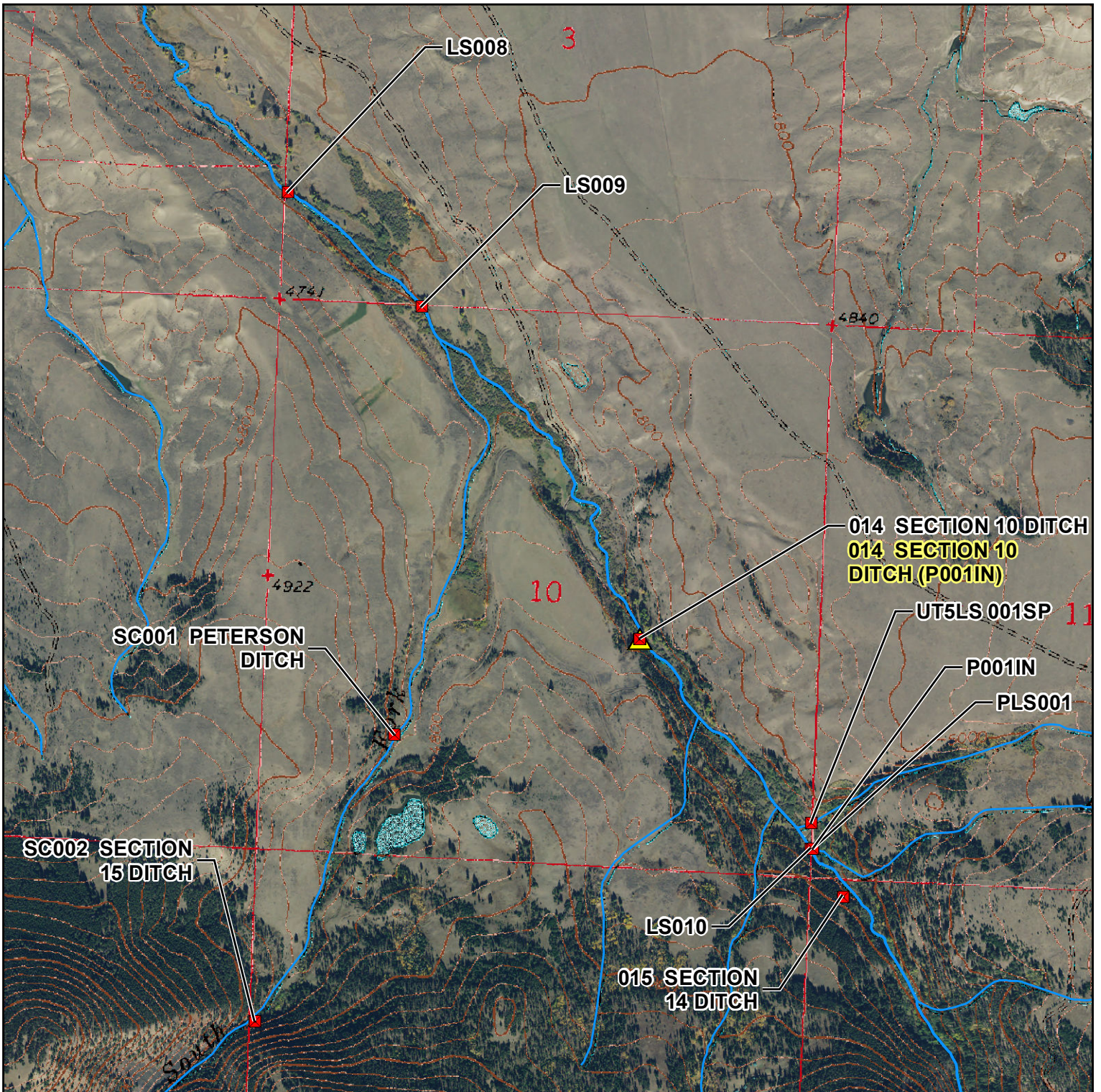
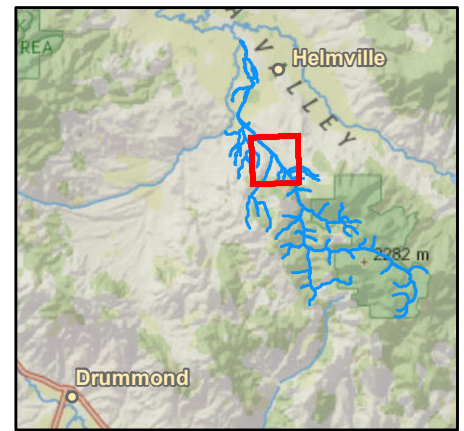
04/15/2016



Page 3 of 6

- Primary Points of Diversion
- ~ Project Streams
- ▲ Secondary Points of Diversion
- ~ Primary Road
- ~ Secondary Road

Aerial Photos: 2015 Color NAIP
Topographic Information: USGS 24K





Cottonwood Creek Diversion Sites

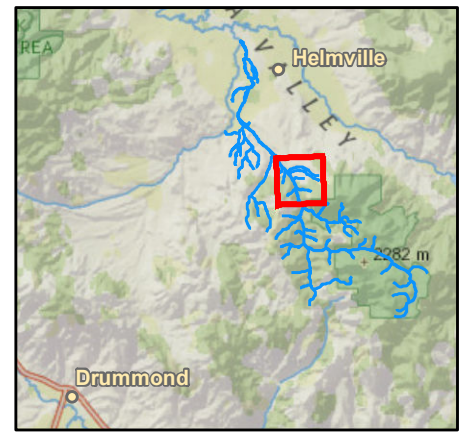
Basin 76F Water Distribution Project

04/15/2016

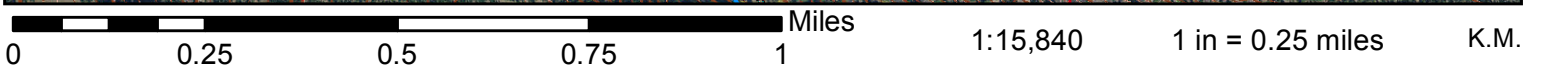
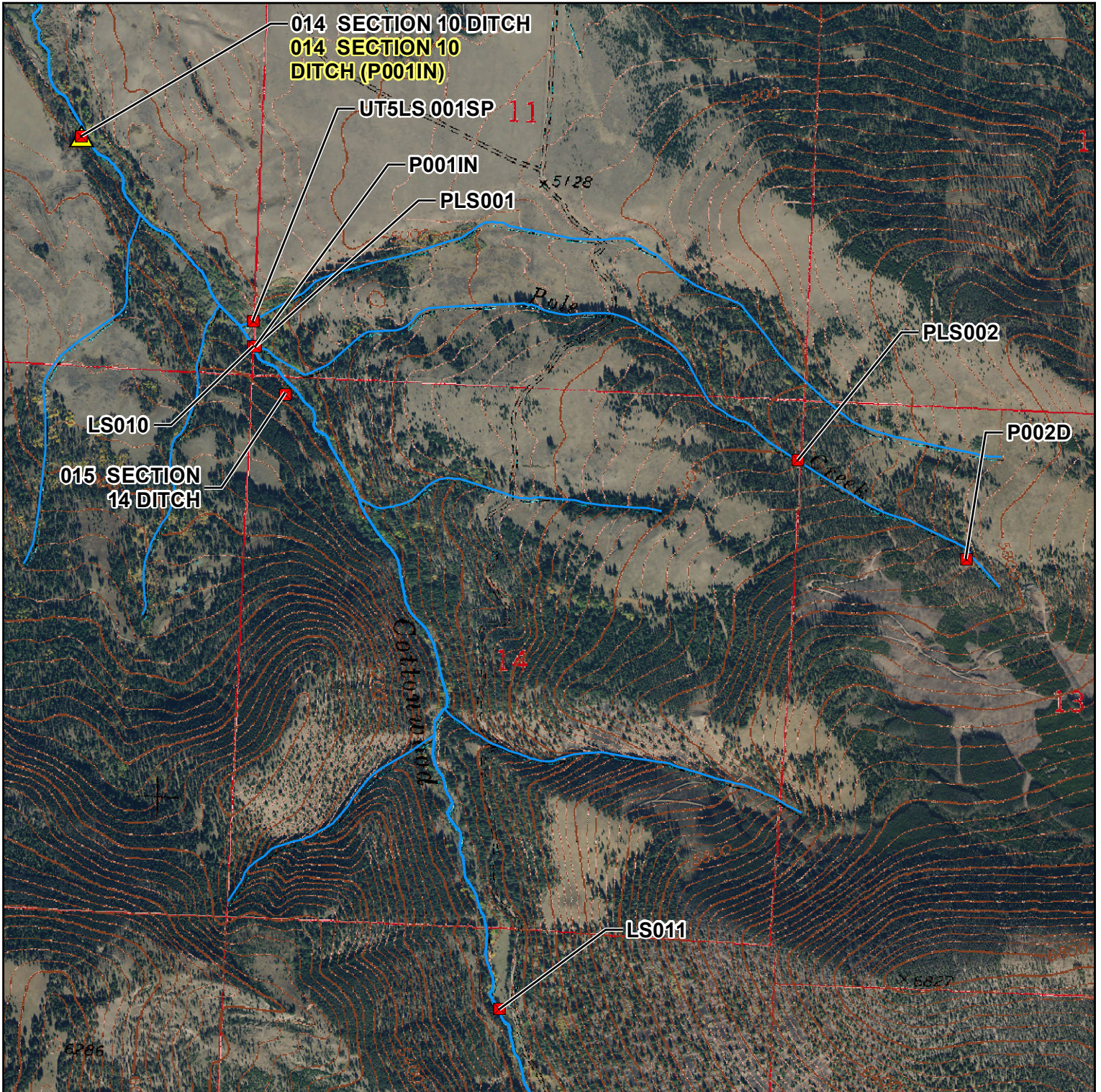


Page 4 of 6

- Primary Points of Diversion
- ~ Project Streams
- ▲ Secondary Points of Diversion
- ~ Primary Road
- ~ Secondary Road



Aerial Photos: 2015 Color NAIP
Topographic Information: USGS 24K





Cottonwood Creek Diversion Sites

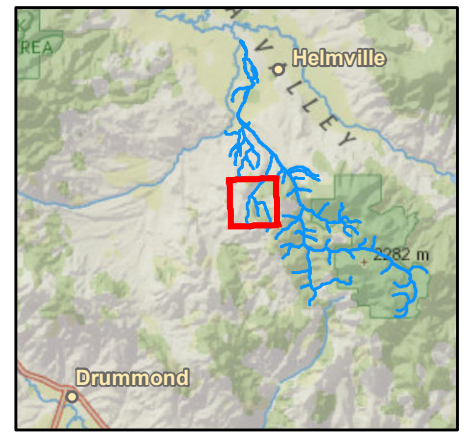
Basin 76F Water Distribution Project

04/15/2016

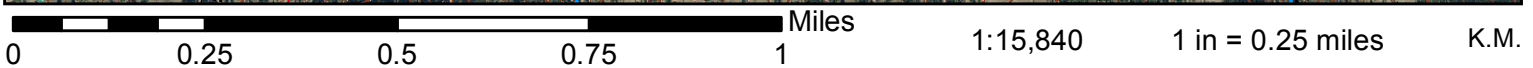
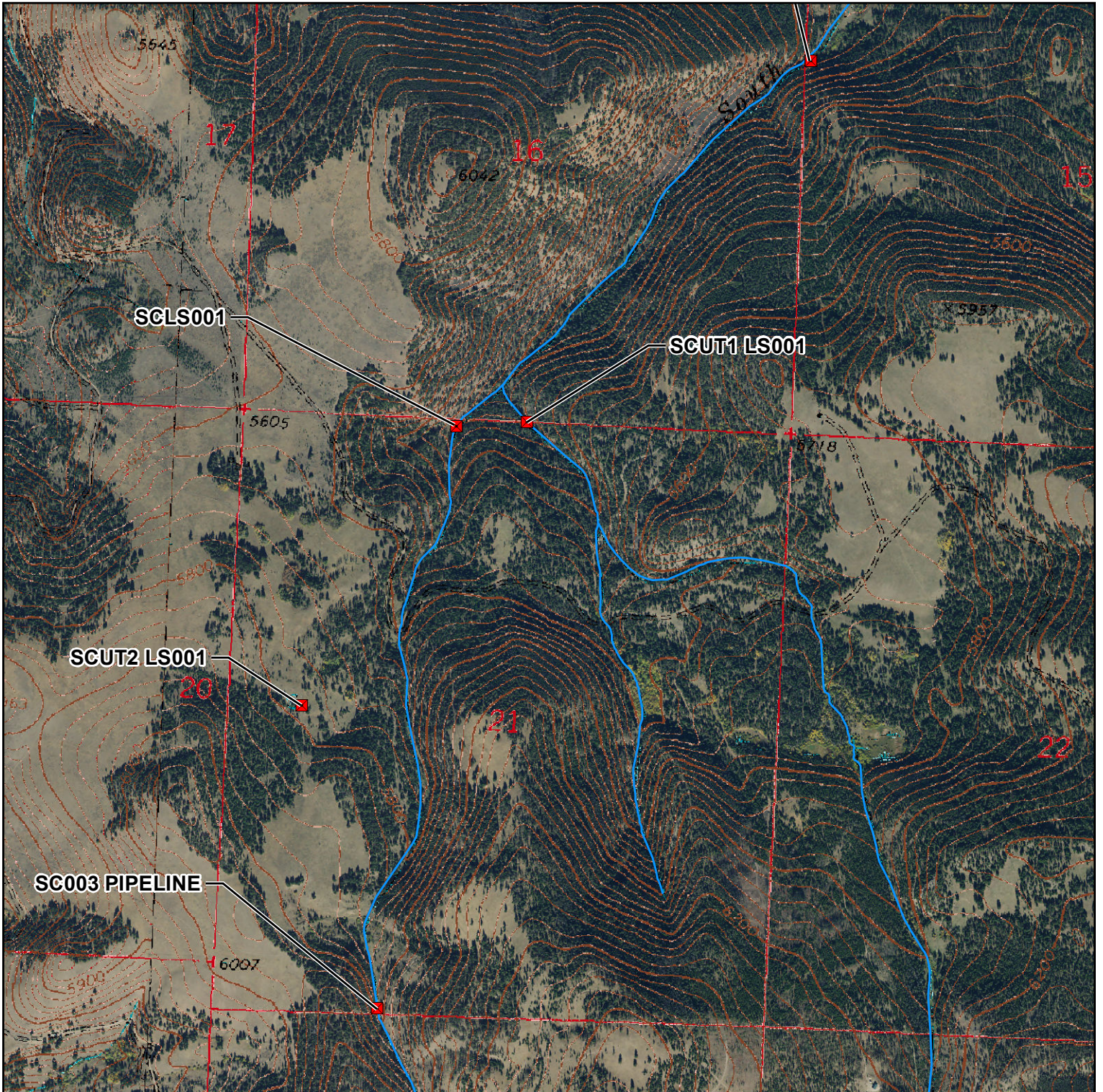


Page 5 of 6

- Primary Points of Diversion
- ~ Project Streams
- ▲ Secondary Points of Diversion
- ~ Primary Road
- ~ Secondary Road



Aerial Photos: 2015 Color NAIP
Topographic Information: USGS 24K





Cottonwood Creek Diversion Sites

Basin 76F Water Distribution Project

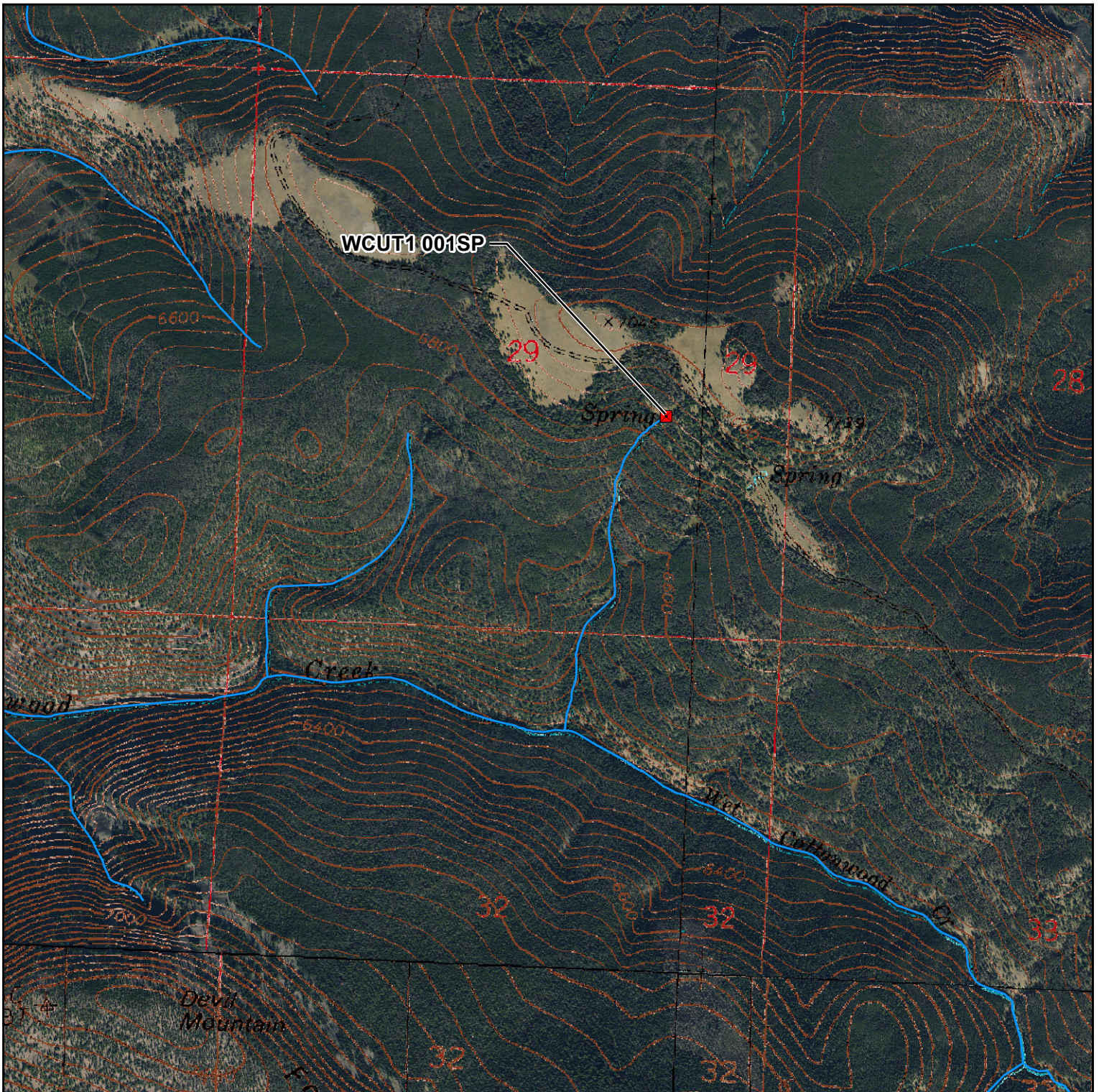
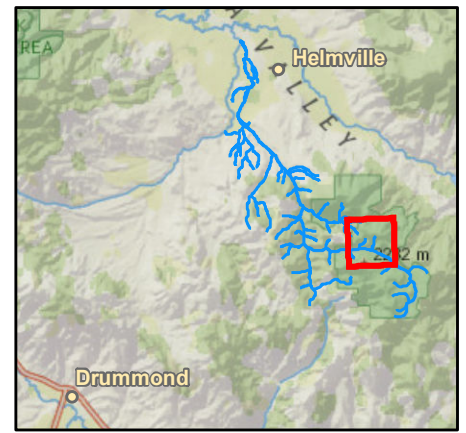
04/15/2016



Page 6 of 6

- Primary Points of Diversion
- ~ Project Streams
- ▲ Secondary Points of Diversion
- ~ Primary Road
- ~ Secondary Road

Aerial Photos: 2015 Color NAIP
Topographic Information: USGS 24K



0 0.25 0.5 0.75 1 Miles 1:15,840 1 in = 0.25 miles K.M.