

43A 191150 00
 43A 191650 00
 43A 3276 00
 43A 211793 00
 43A 191156 00
 43A 23752 00
 43A 20833 00
 43A 192763 00
 43A 191153 00
 43A 193210 00
 43A 190617 00
 43A 191652 00
 43A 20834 00
 43A 191152 00
 43A 2490 00
 43A 16746 00
 43A 212753 00
 43A 113252 00
 43A 16745 00
 43A 23753 00
 43A 2489 00
 43A 191155 00
 43A 193034 00
 43A 2491 00
 43A 193035 00

43A 14404 00
 43A 14405 00
 43A 192000 00
 43A 192001 00
 43A 192014 00
 43A 192018 00

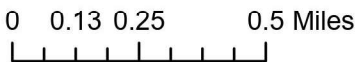
43A 30150058

43A 138988 00
 43A 195205 00

43A 18874 00
 43A 18875 00
 43A 18876 00
 43A 20835 00
 43A 20836 00



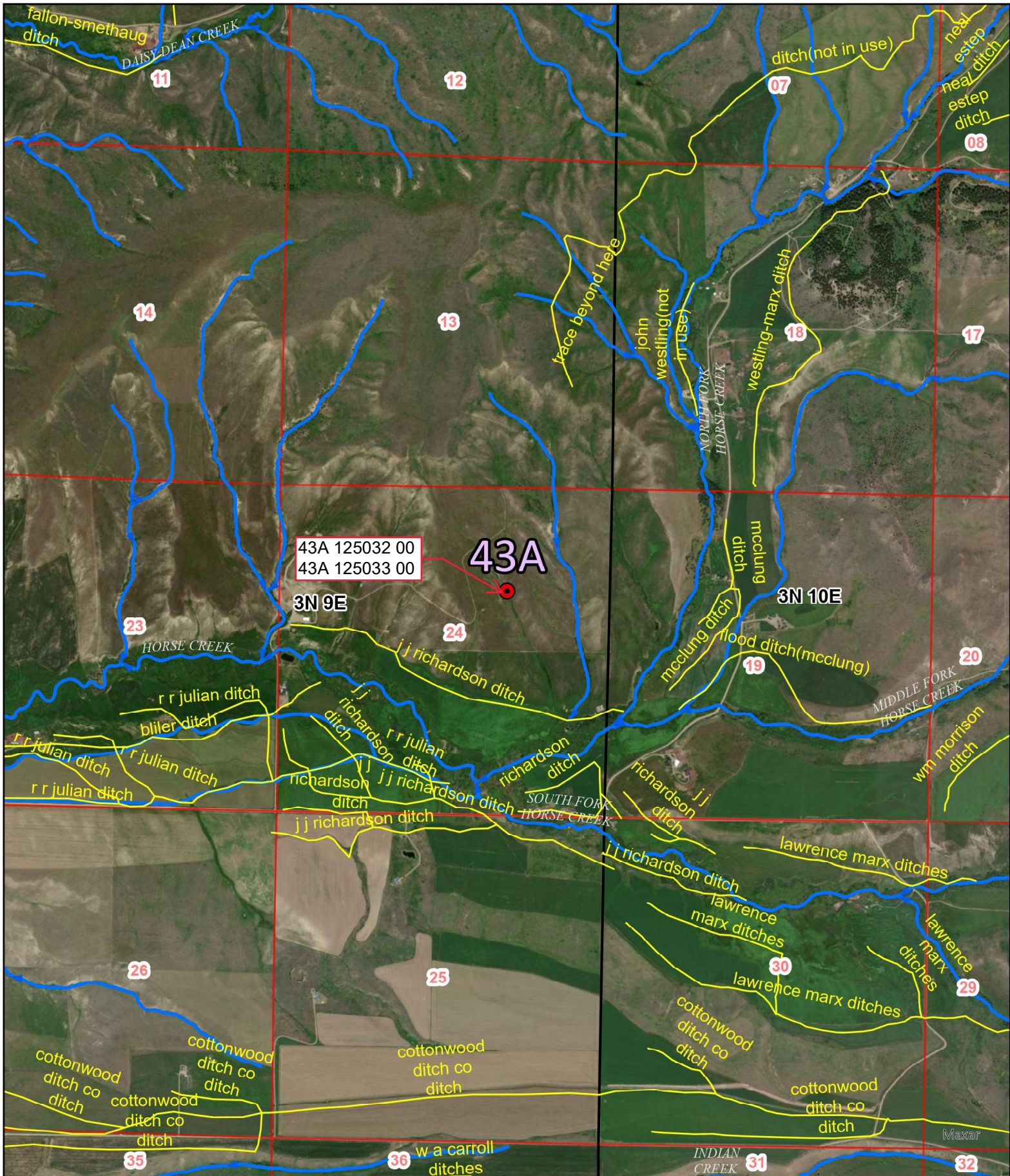
Cottonwood Creek
 Diversion Sites (Basin 43A)
 Post Decree Administration Area



Scale: 1:24,000

The diversions shown on this map are based on available data. The mapped diversions may not be correct.

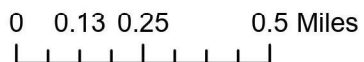




Cottonwood Creek

Diversion Sites (Basin 43A)

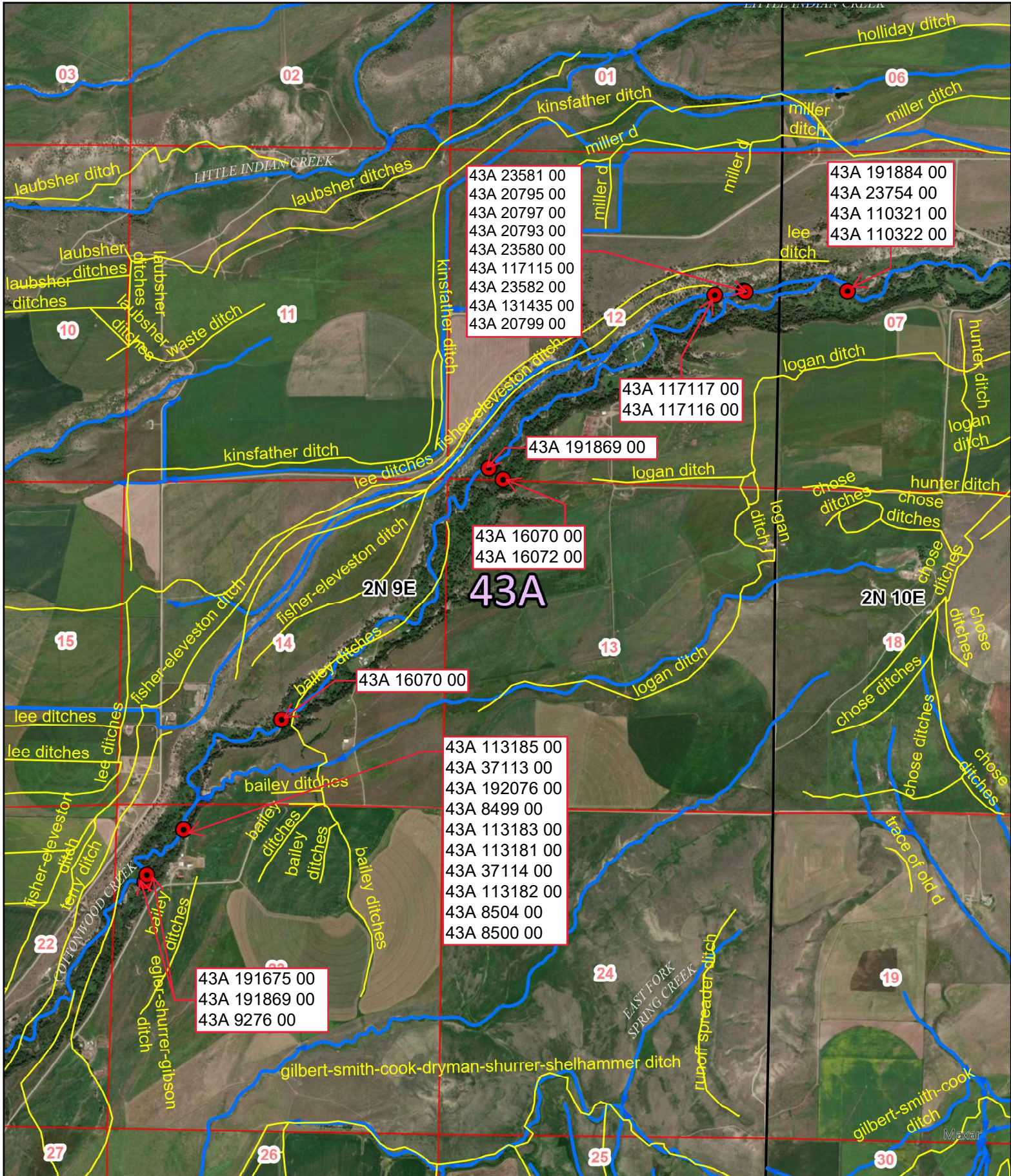
Post Decree Administration Area



Scale: 1:24,000



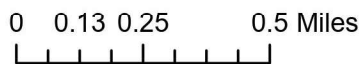
The diversions shown on this map are based on available data. The mapped diversions may not be correct.



Cottonwood Creek

Diversion Sites (Basin 43A)

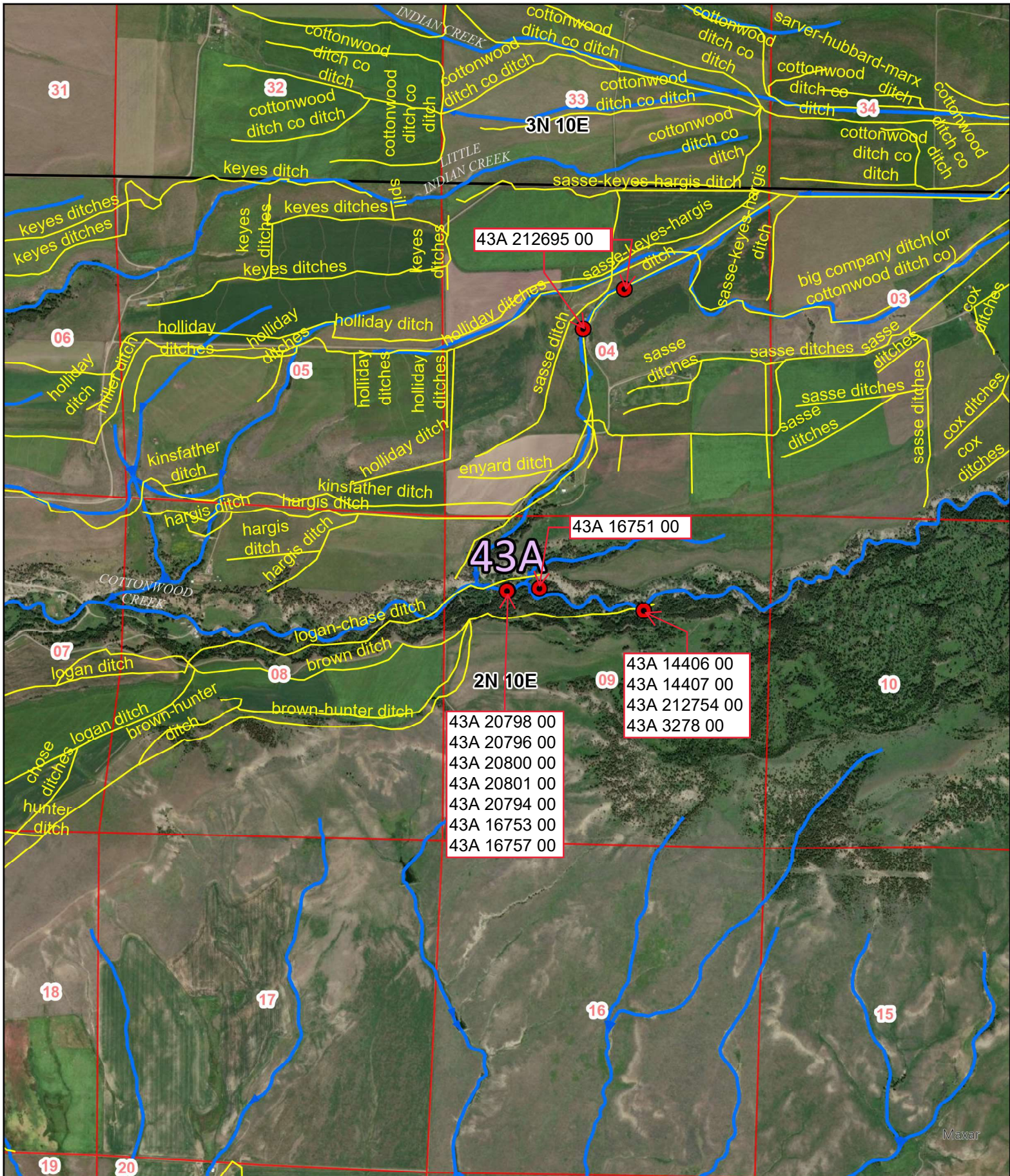
Post Decree Administration Area



Scale: 1:24,000



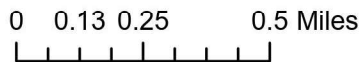
The diversions shown on this map are based on available data. The mapped diversions may not be correct.



Cottonwood Creek

Diversion Sites (Basin 43A)

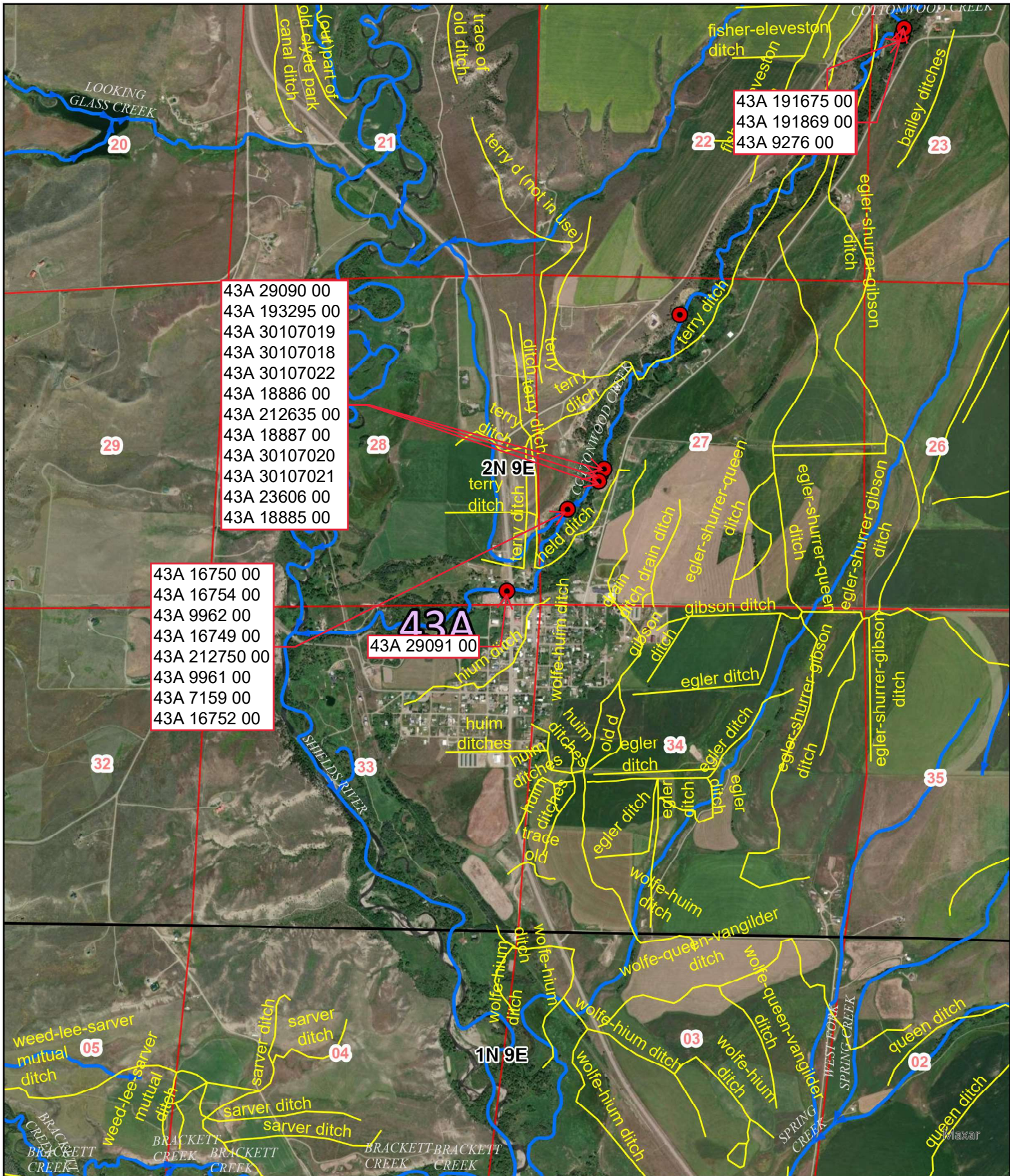
Post Decree Administration Area



Scale: 1:24,000



The diversions shown on this map are based on available data. The mapped diversions may not be correct.



43A 29090 00
 43A 193295 00
 43A 30107019
 43A 30107018
 43A 30107022
 43A 18886 00
 43A 212635 00
 43A 18887 00
 43A 30107020
 43A 30107021
 43A 23606 00
 43A 18885 00

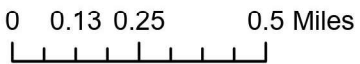
43A 191675 00
 43A 191869 00
 43A 9276 00

43A 16750 00
 43A 16754 00
 43A 9962 00
 43A 16749 00
 43A 212750 00
 43A 9961 00
 43A 7159 00
 43A 16752 00

43A
 43A 29091 00



Cottonwood Creek
 Diversion Sites (Basin 43A)
 Post Decree Administration Area



Scale: 1:24,000



The diversions shown on this map are based on available data. The mapped diversions may not be correct.