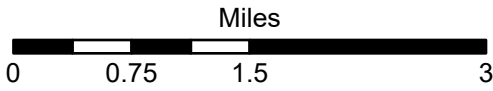




# Three Mile Creek Diversion Sites

CLARK FORK ABOVE BLACKFOOT RIVER (Basin Name) - Basin 76G

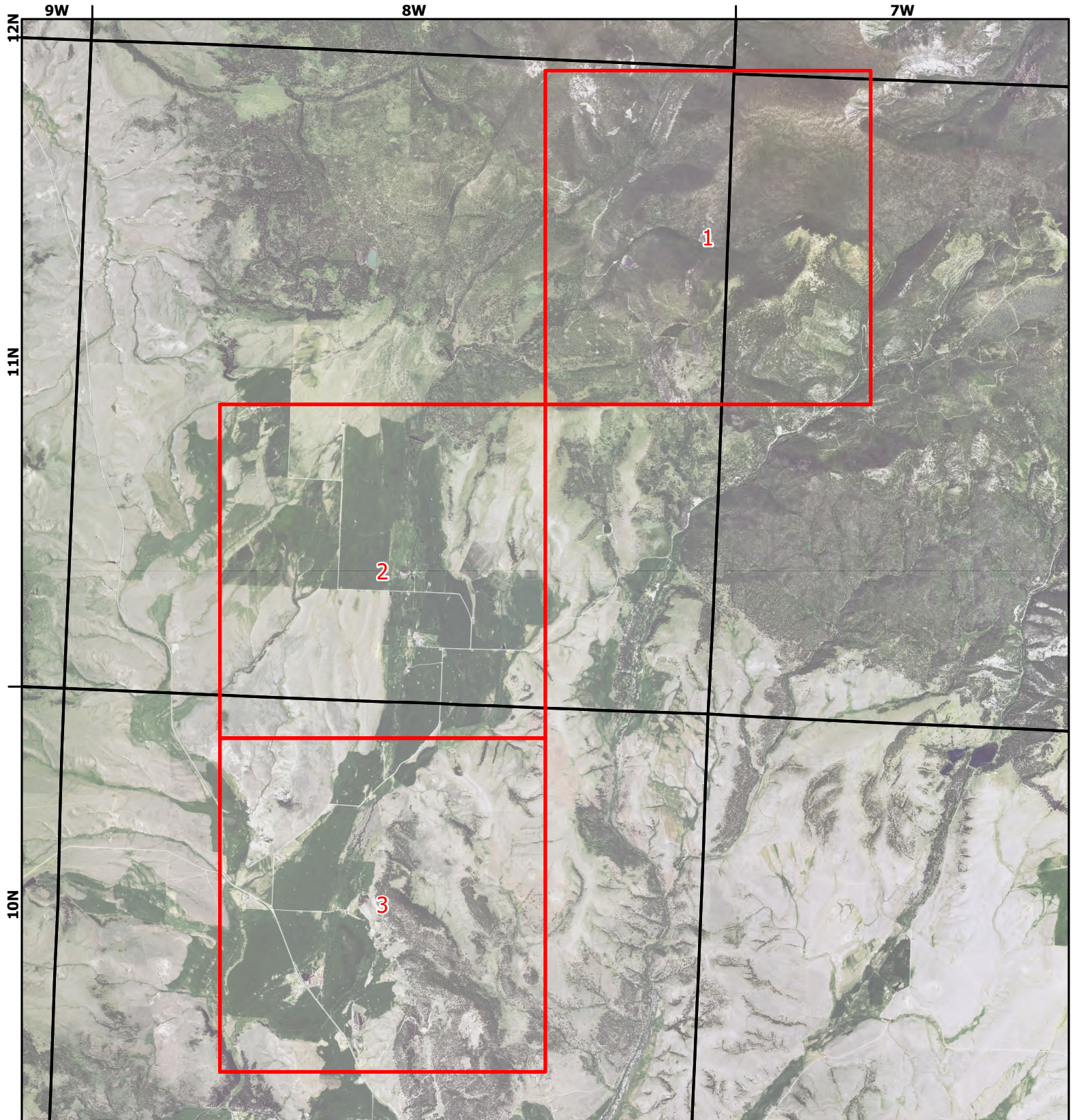


- Page # Index
- Township

- Interstate
- Cities and Towns

1:77,208

Aerial Photos: 2021 NAIP





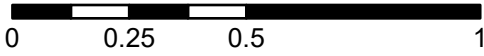
# Three Mile Creek Diversion Sites

CLARK FORK ABOVE BLACKFOOT RIVER (Basin Name) - Basin 76G

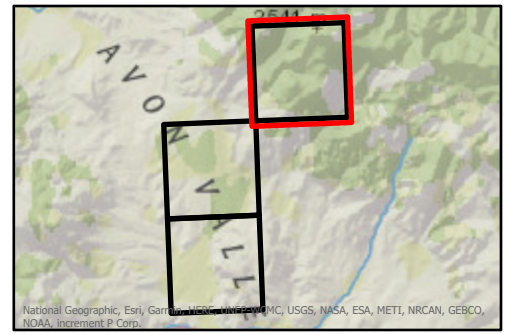


1:26,000

Miles

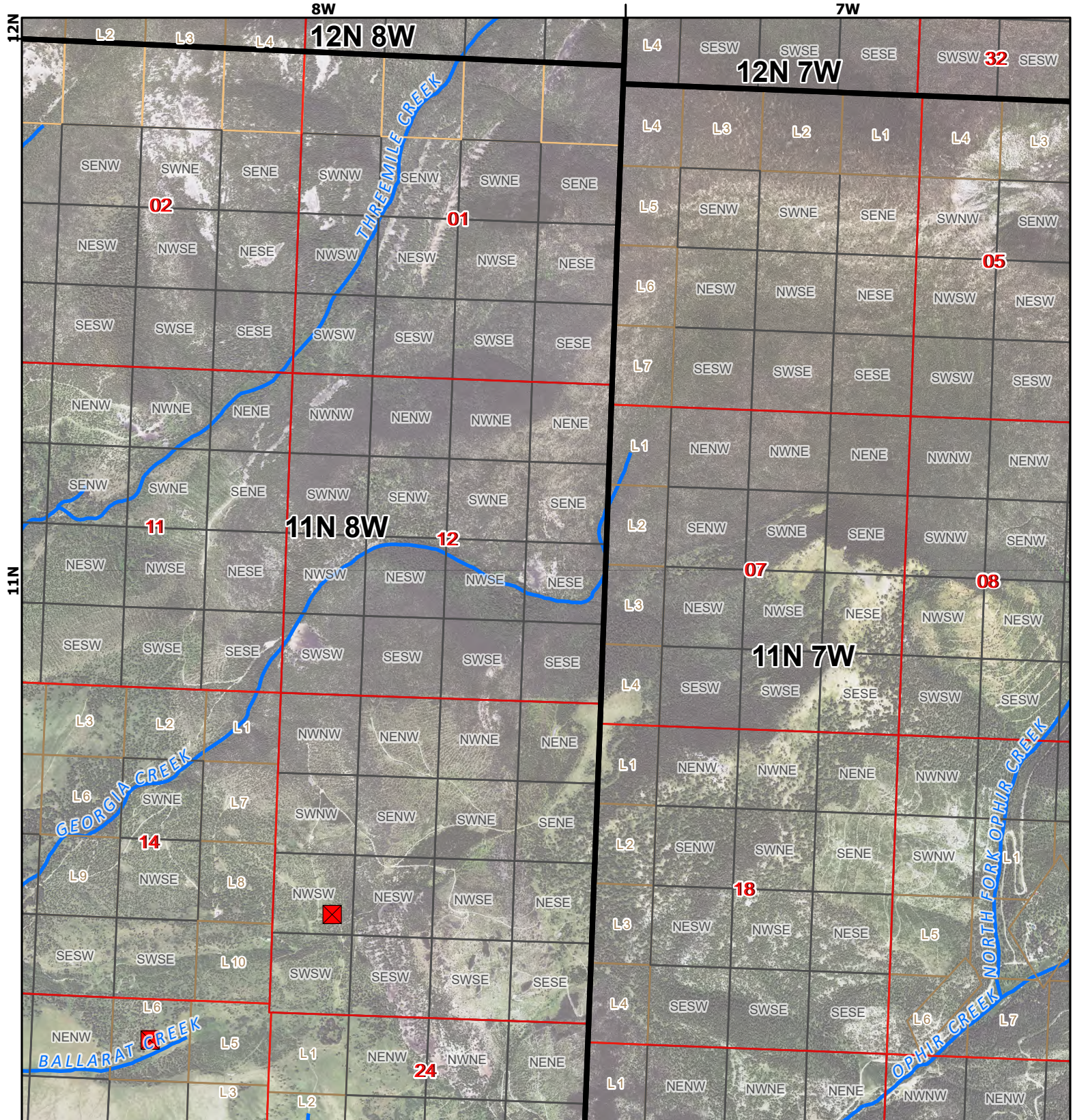


- ✖ Points of Diversion
- ~ Streams
- ~ Canal Ditch



\* The diversions shown on this map are based on available data. The mapped diversions may not be correct.

Aerial Photos: 2021 NAIP





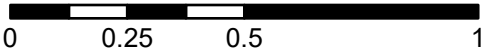
# Three Mile Creek Diversion Sites

CLARK FORK ABOVE BLACKFOOT RIVER (Basin Name) - Basin 76G



1:26,000

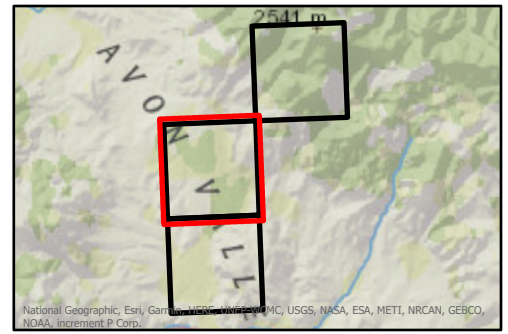
Miles



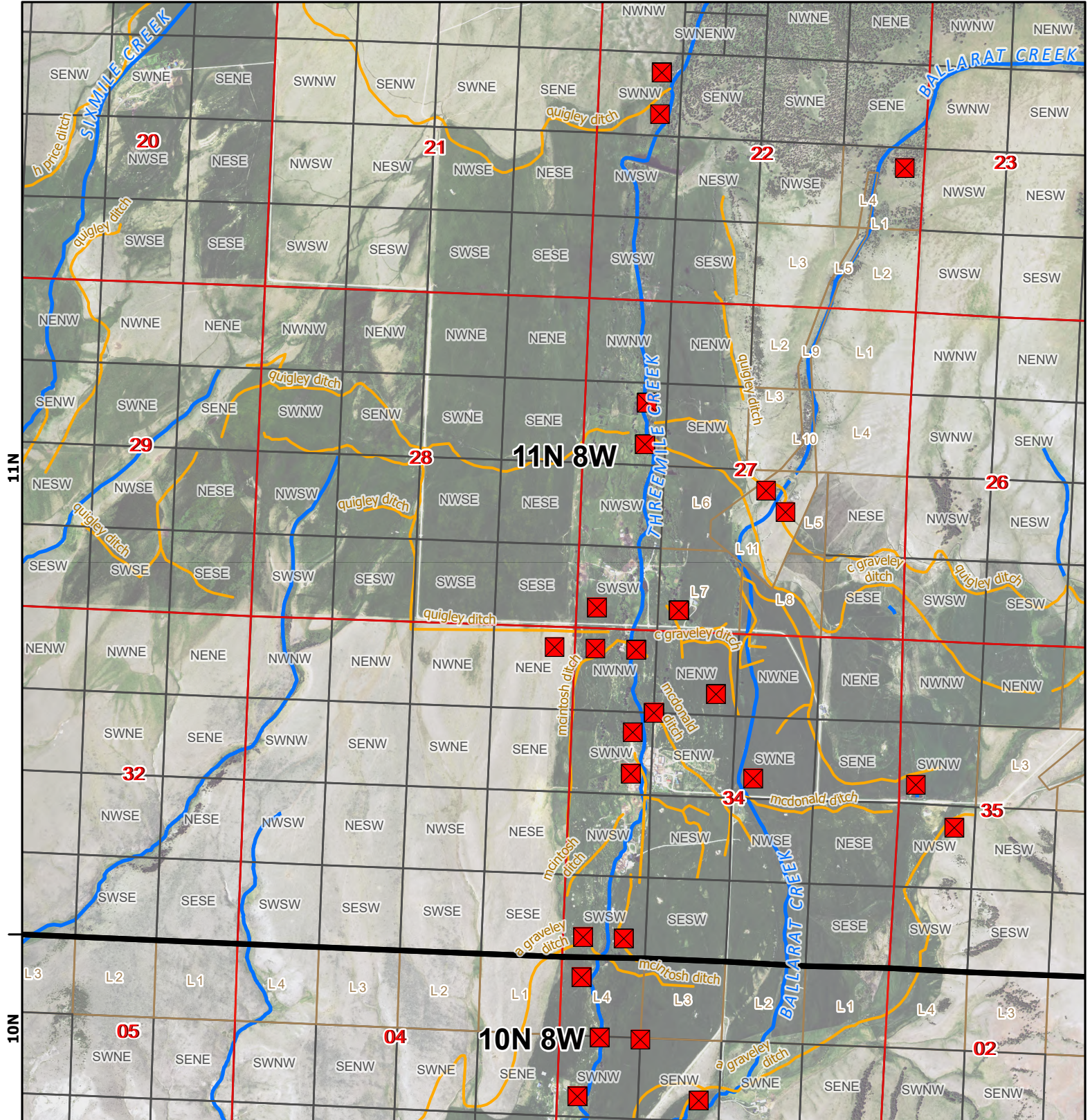
- ❑ Points of Diversion
- ~ Streams
- ~ Canal Ditch

\* The diversions shown on this map are based on available data. The mapped diversions may not be correct.

Aerial Photos: 2021 NAIP



**8W**





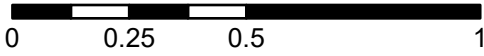


# Three Mile Creek Diversion Sites

CLARK FORK ABOVE BLACKFOOT RIVER (Basin Name) - Basin 76G

1:26,000

Miles



- ☒ Points of Diversion
- ~ Streams
- ~ Canal Ditch

\* The diversions shown on this map are based on available data. The mapped diversions may not be correct.

Aerial Photos: 2021 NAIP

