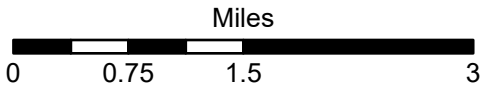




Fred Burr Creek Diversion Sites

BITTERROOT RIVER (Basin Name) - Basin 76H

5/30/2024



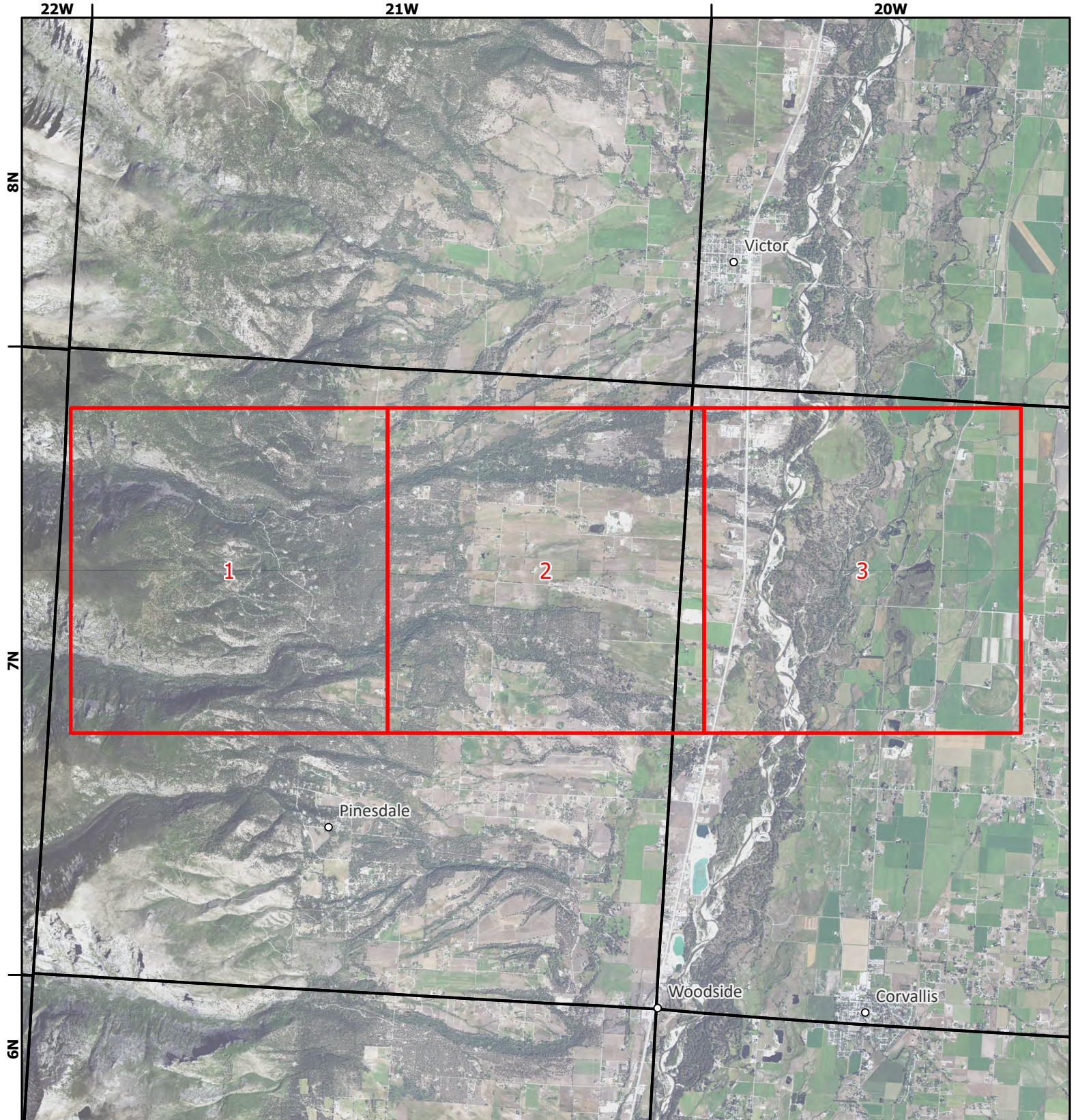
1:79,375



- Page # Index
- Township

- Interstate
- Cities and Towns

Aerial Photos: 2021 NAIP



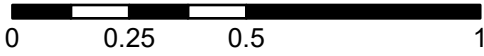





Fred Burr Creek Diversion Sites

BITTERROOT RIVER (Basin Name) - Basin 76H

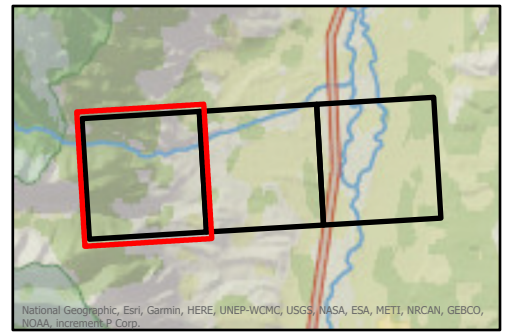
1:26,000

Miles



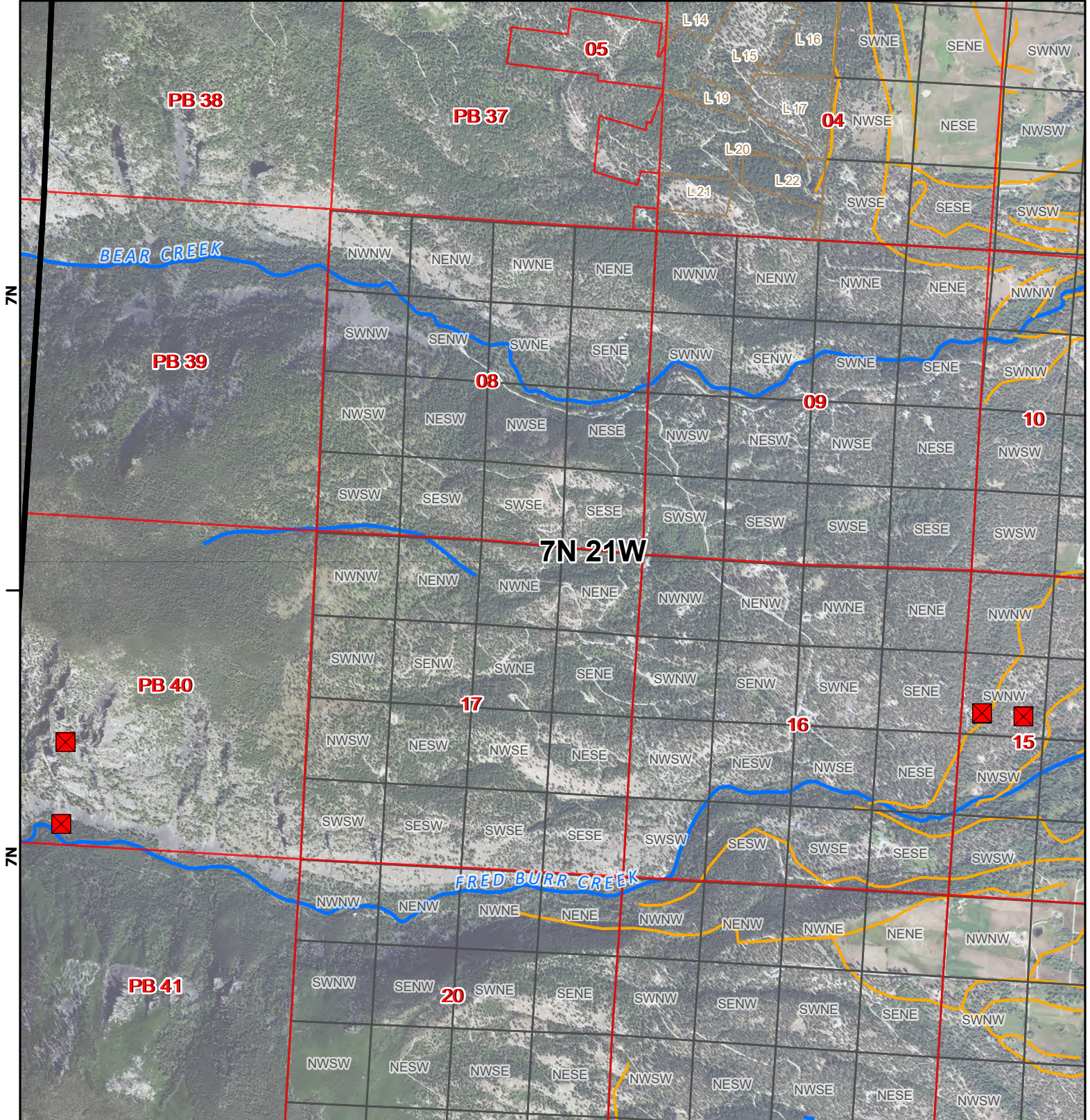
-  Points of Diversion
-  Streams
-  Canal Ditch

Aerial Photos: 2021 NAIP



22W

21W



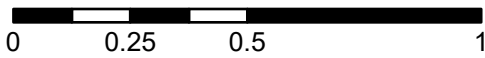


Fred Burr Creek Diversion Sites

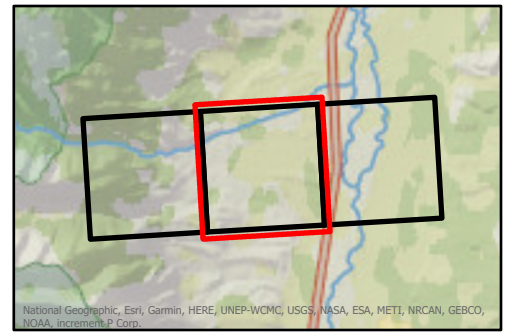
BITTERROOT RIVER (Basin Name) - Basin 76H

1:26,000

Miles



- ❑ Points of Diversion
- ~ Streams
- ~ Canal Ditch

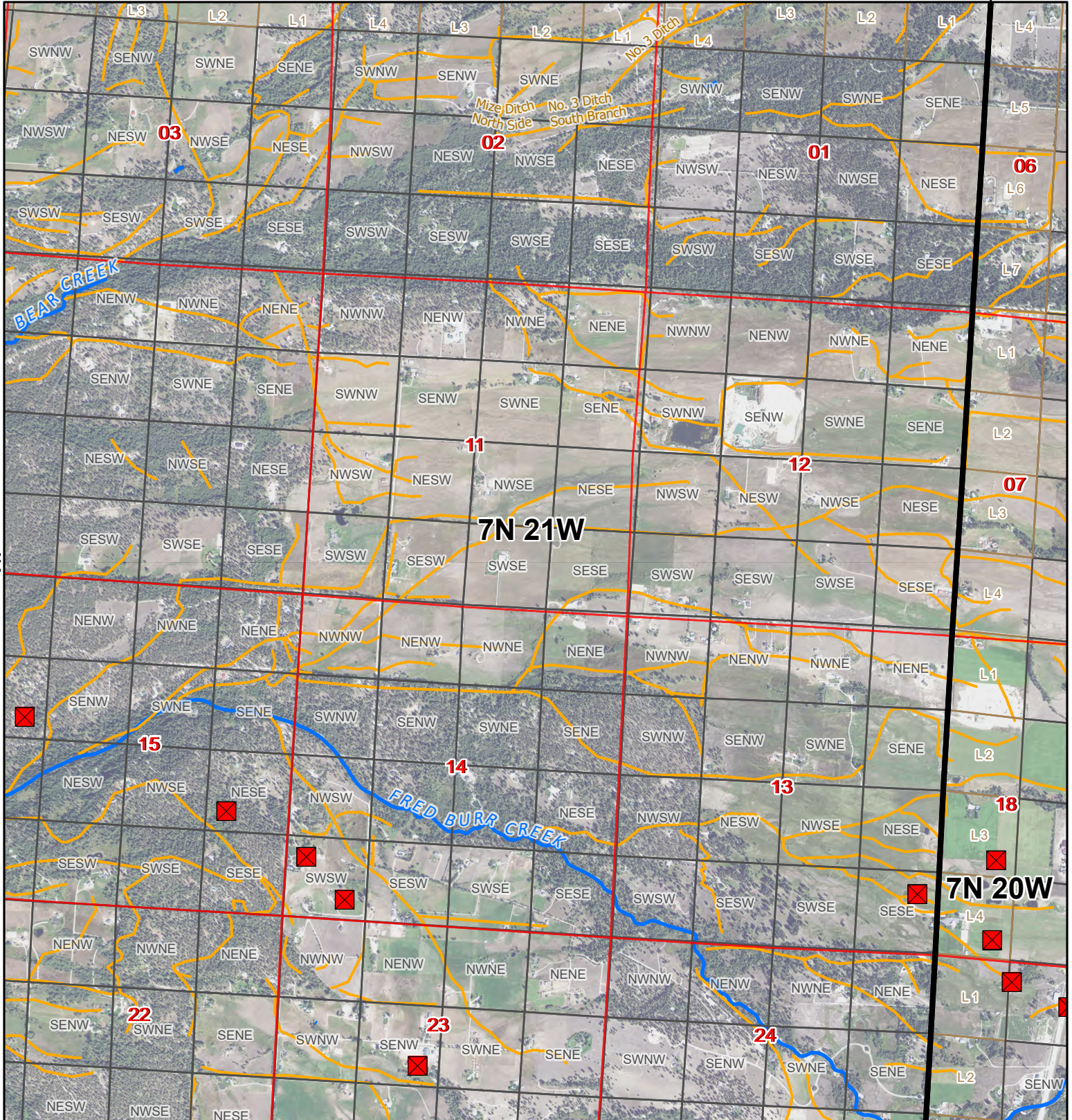


* The diversions shown on this map are based on available data. The mapped diversions may not be correct.

Aerial Photos: 2021 NAIP

21W

20W



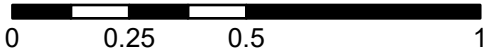


Fred Burr Creek Diversion Sites

BITTERROOT RIVER (Basin Name) - Basin 76H

1:26,000

Miles



- Points of Diversion
- Streams
- Canal Ditch

* The diversions shown on this map are based on available data. The mapped diversions may not be correct.

Aerial Photos: 2021 NAIP

