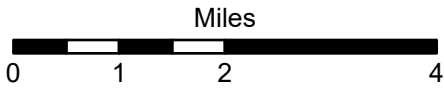




Sweeney Creek Diversion Sites

BITTERROOT RIVER (Basin Name) - Basin 76H

5/31/2024



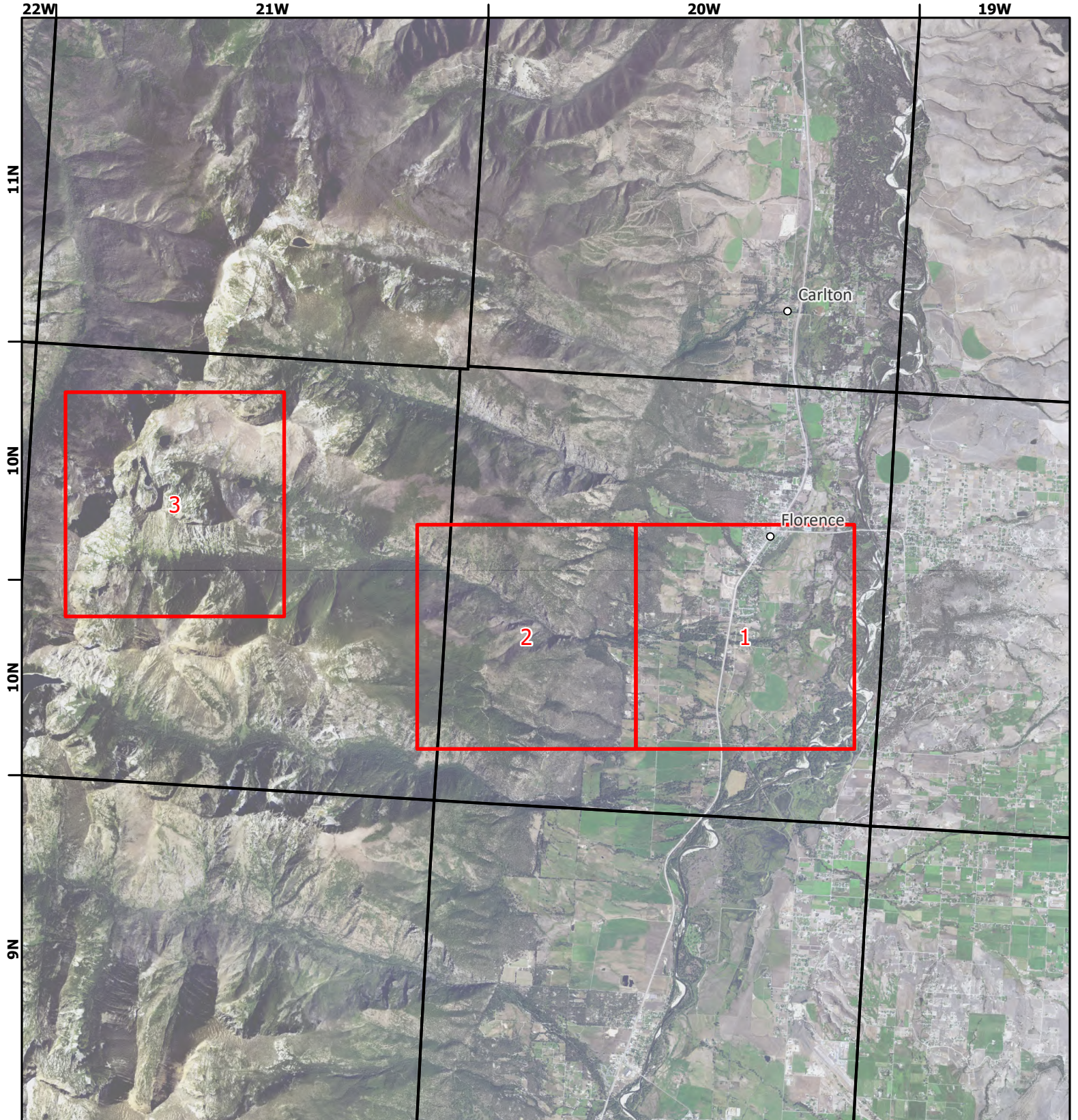
1:115,000



Page # Index
 Township

Interstate
 Cities and Towns

Aerial Photos: 2021 NAIP



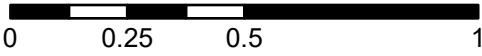


Sweeney Creek Diversion Sites

BITTERROOT RIVER (Basin Name) - Basin 76H

1:26,000

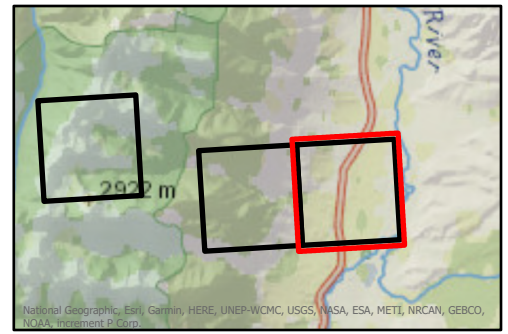
Miles



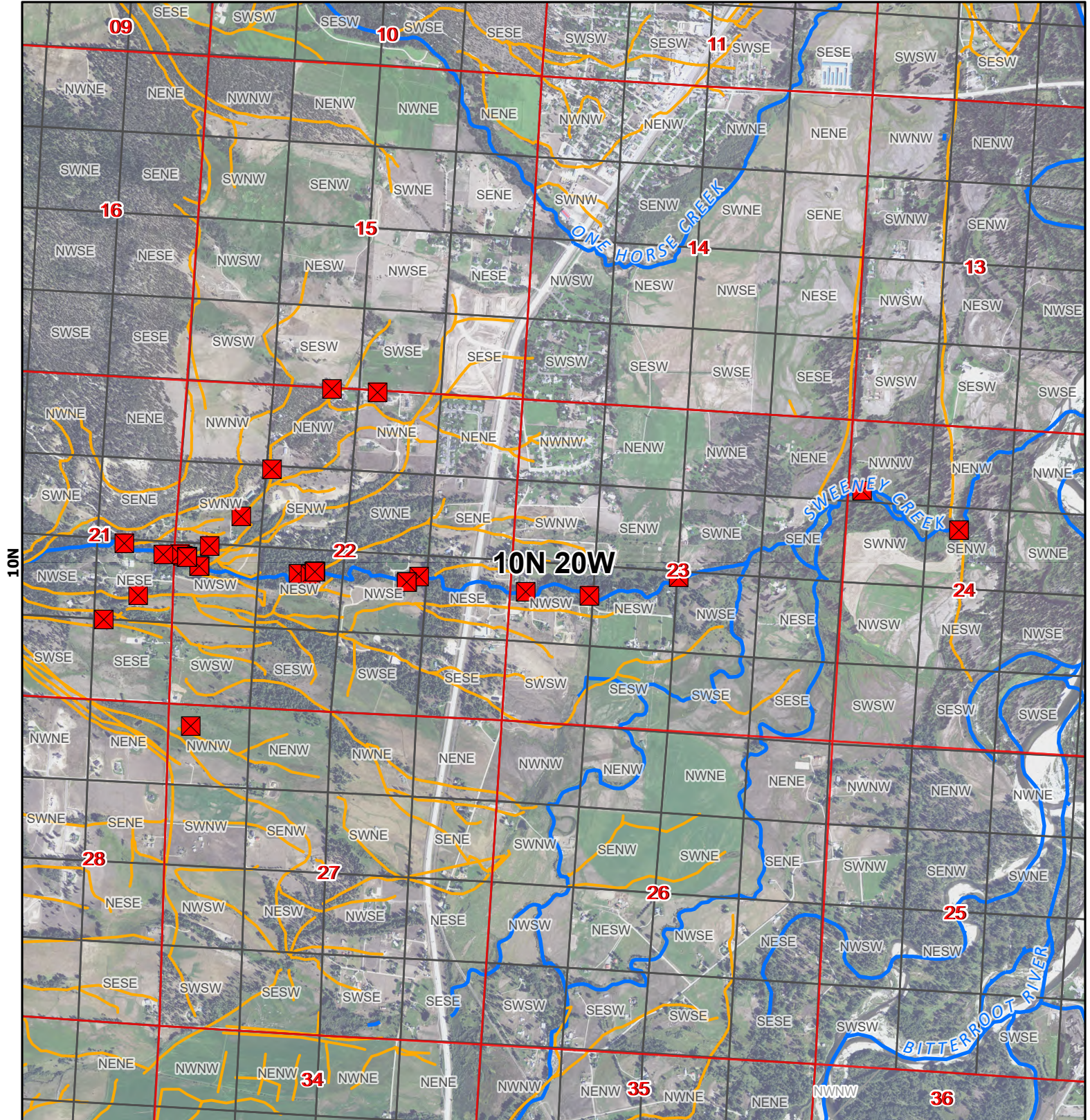
- Points of Diversion
- Streams
- Canal Ditch

* The diversions shown on this map are based on available data. The mapped diversions may not be correct.

Aerial Photos: 2021 NAIP



20W



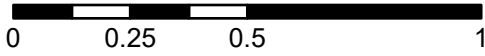


Sweeney Creek Diversion Sites

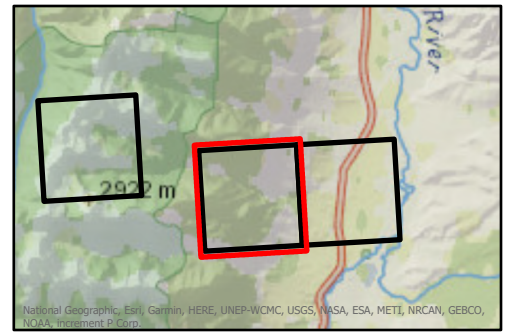
BITTERROOT RIVER (Basin Name) - Basin 76H

1:26,000

Miles

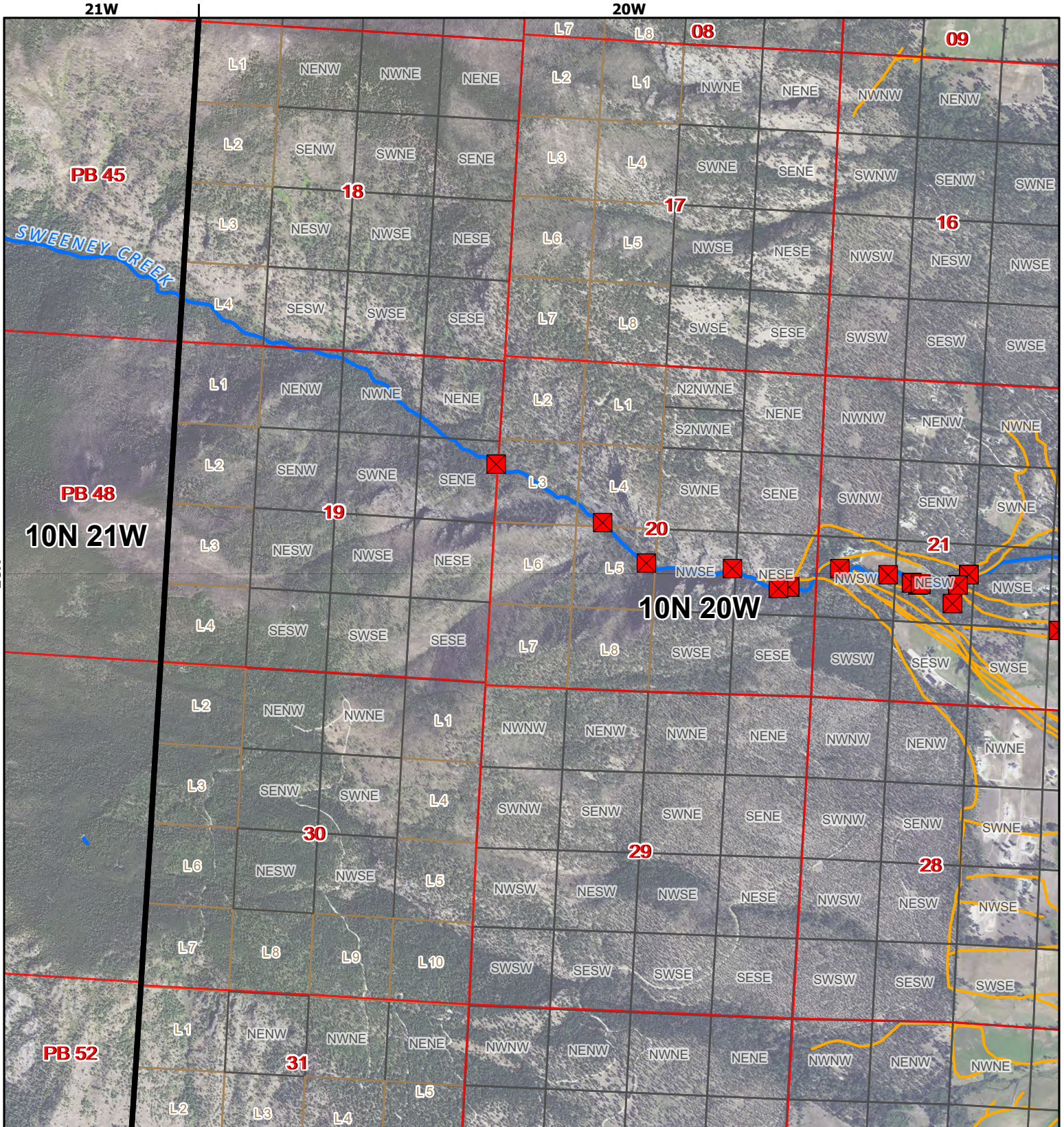


- Points of Diversion
- Streams
- Canal Ditch



* The diversions shown on this map are based on available data. The mapped diversions may not be correct.

Aerial Photos: 2021 NAIP

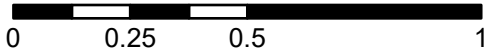







Sweeney Creek Diversion Sites

BITTERROOT RIVER (Basin Name) - Basin 76H

1:26,000
Miles

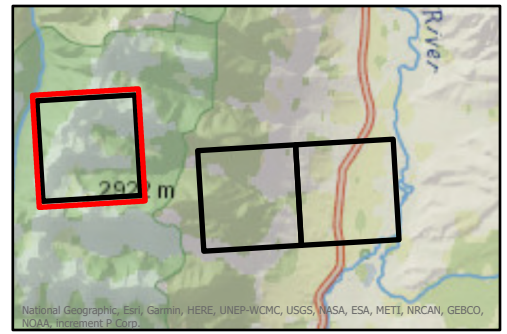


-  Points of Diversion
-  Streams
-  Canal Ditch

* The diversions shown on this map are based on available data. The mapped diversions may not be correct.

Aerial Photos: 2021 NAIP

21W



National Geographic, Esri, Garmin, HERE, UNEP-WCMC, USGS, NASA, ESA, METI, NRCAN, GEBCO, NOAA, iNaturalist, P. Corp.

