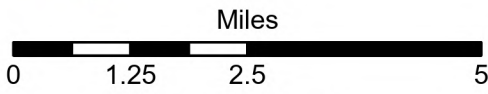




Wisconsin Creek Diversion Sites

RUBY RIVER (Basin Name) - Basin 41C

5/2/2024

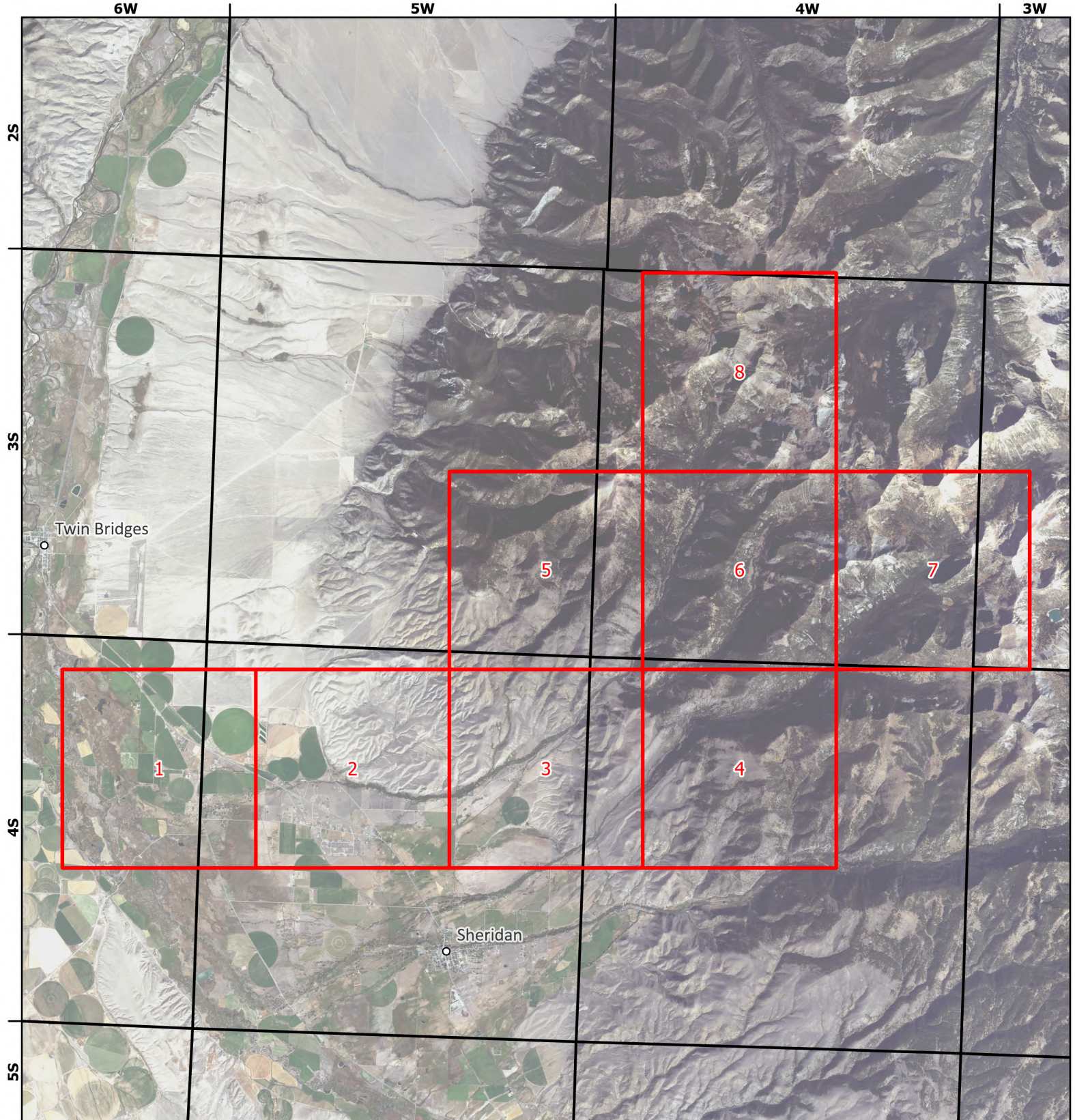


Page # Index
 Township

Interstate
 Cities and Towns

1:130,000

Aerial Photos: 2021 NAIP



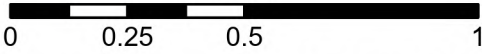
Wisconsin Creek Diversion Sites

RUBY RIVER (Basin Name) - Basin 41C



1:26,000

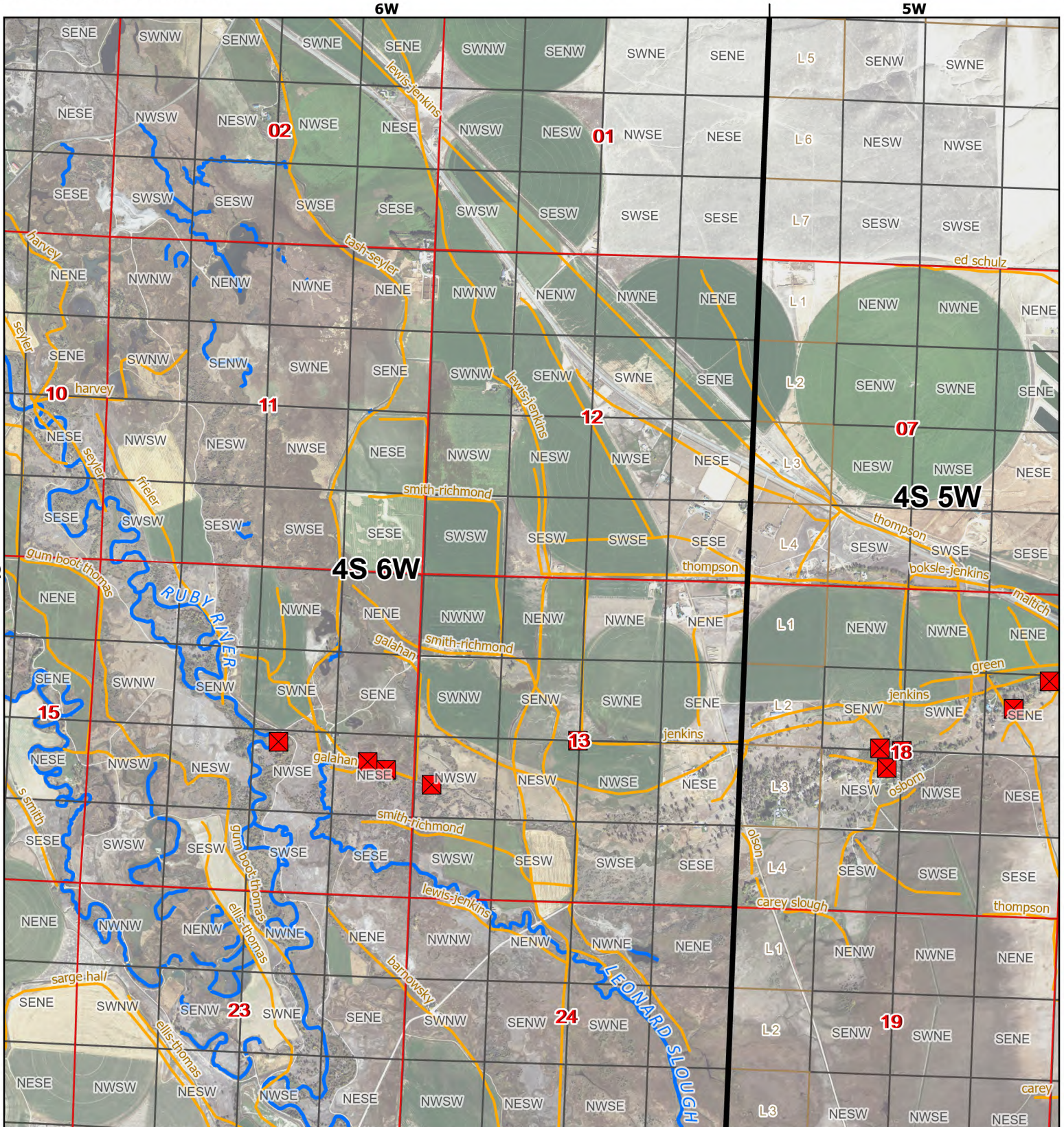
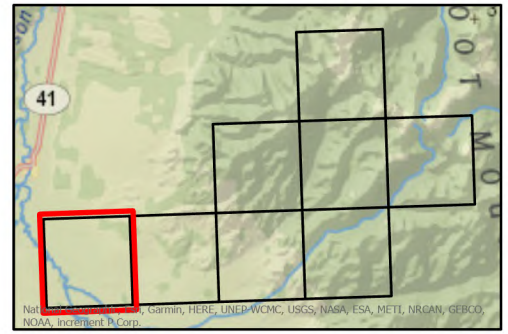
Miles



- ✖ Points of Diversion
- ~ Streams
- ~ Canal Ditch

* The diversions shown on this map are based on available data. The mapped diversions may not be correct.

Aerial Photos: 2021 NAIP



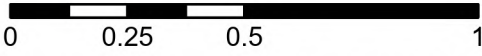
Wisconsin Creek Diversion Sites

RUBY RIVER (Basin Name) - Basin 41C

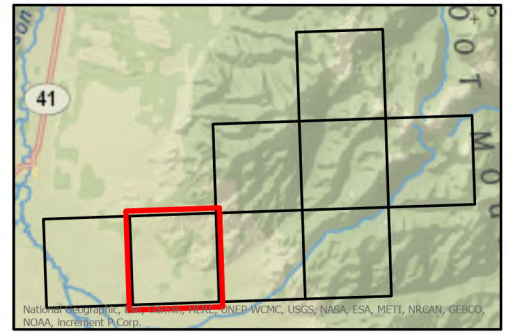


1:26,000

Miles



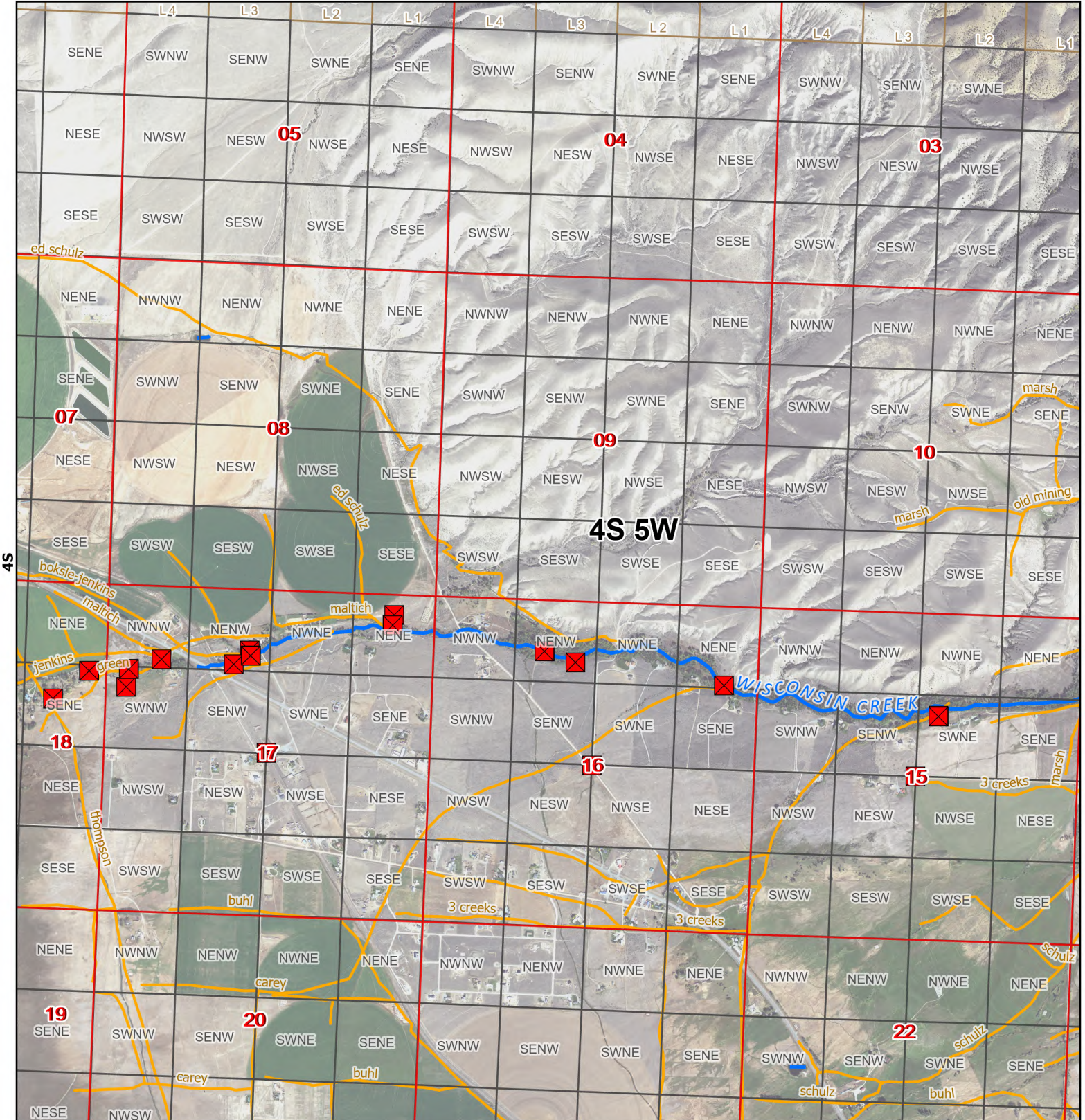
- ✖ Points of Diversion
- ~ Streams
- ~ Canal Ditch



* The diversions shown on this map are based on available data. The mapped diversions may not be correct.

Aerial Photos: 2021 NAIP

5W



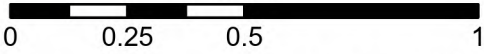


Wisconsin Creek Diversion Sites

RUBY RIVER (Basin Name) - Basin 41C

1:26,000

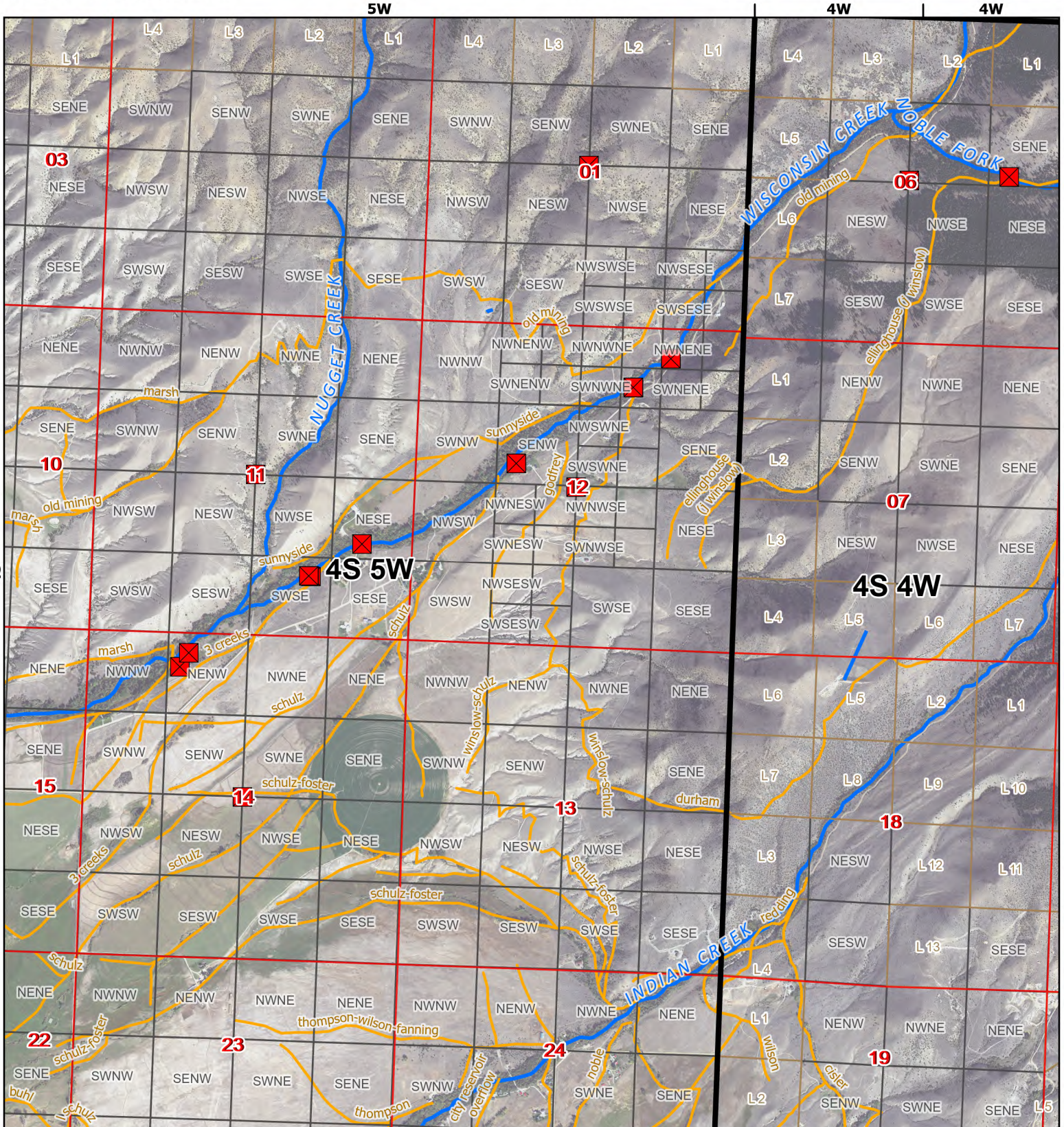
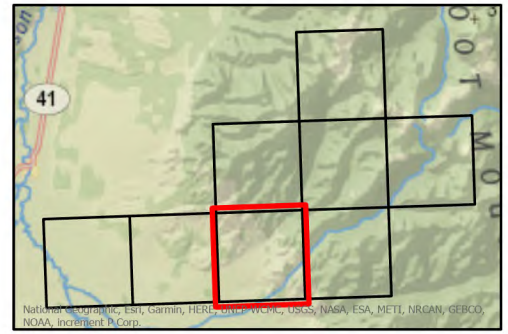
Miles



- Points of Diversion
- ~ Streams
- ~ Canal Ditch

* The diversions shown on this map are based on available data. The mapped diversions may not be correct.

Aerial Photos: 2021 NAIP

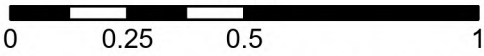


Wisconsin Creek Diversion Sites

RUBY RIVER (Basin Name) - Basin 41C

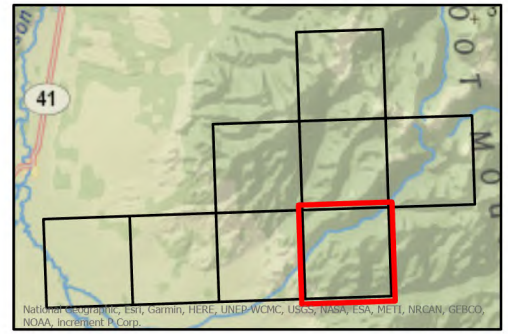


1:26,000
Miles

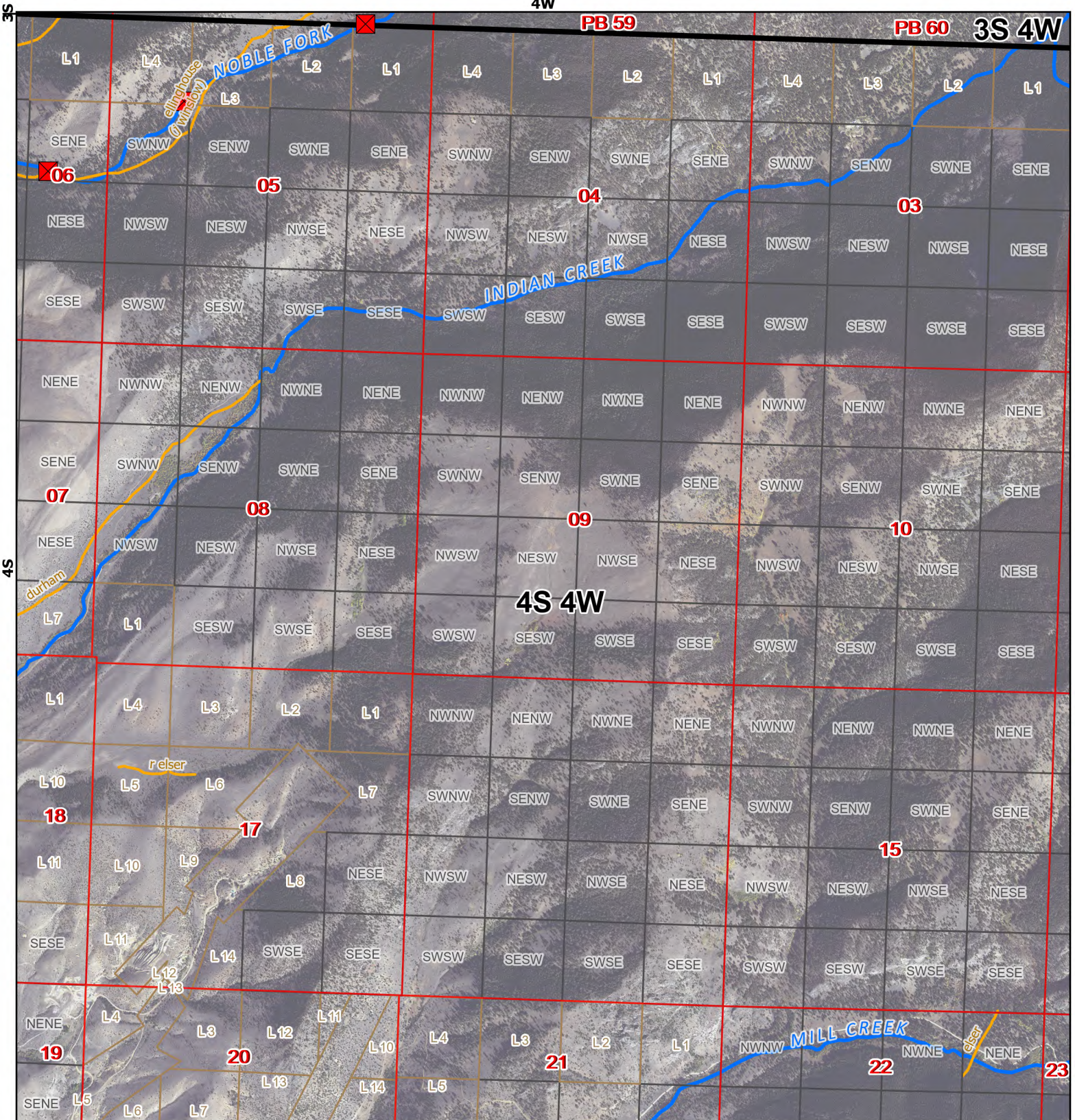


- ✖ Points of Diversion
- ~ Streams
- ~ Canal Ditch

Aerial Photos: 2021 NAIP



* The diversions shown on this map are based on available data. The mapped diversions may not be correct.

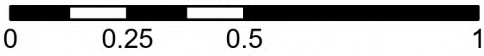




Wisconsin Creek Diversion Sites

RUBY RIVER (Basin Name) - Basin 41C

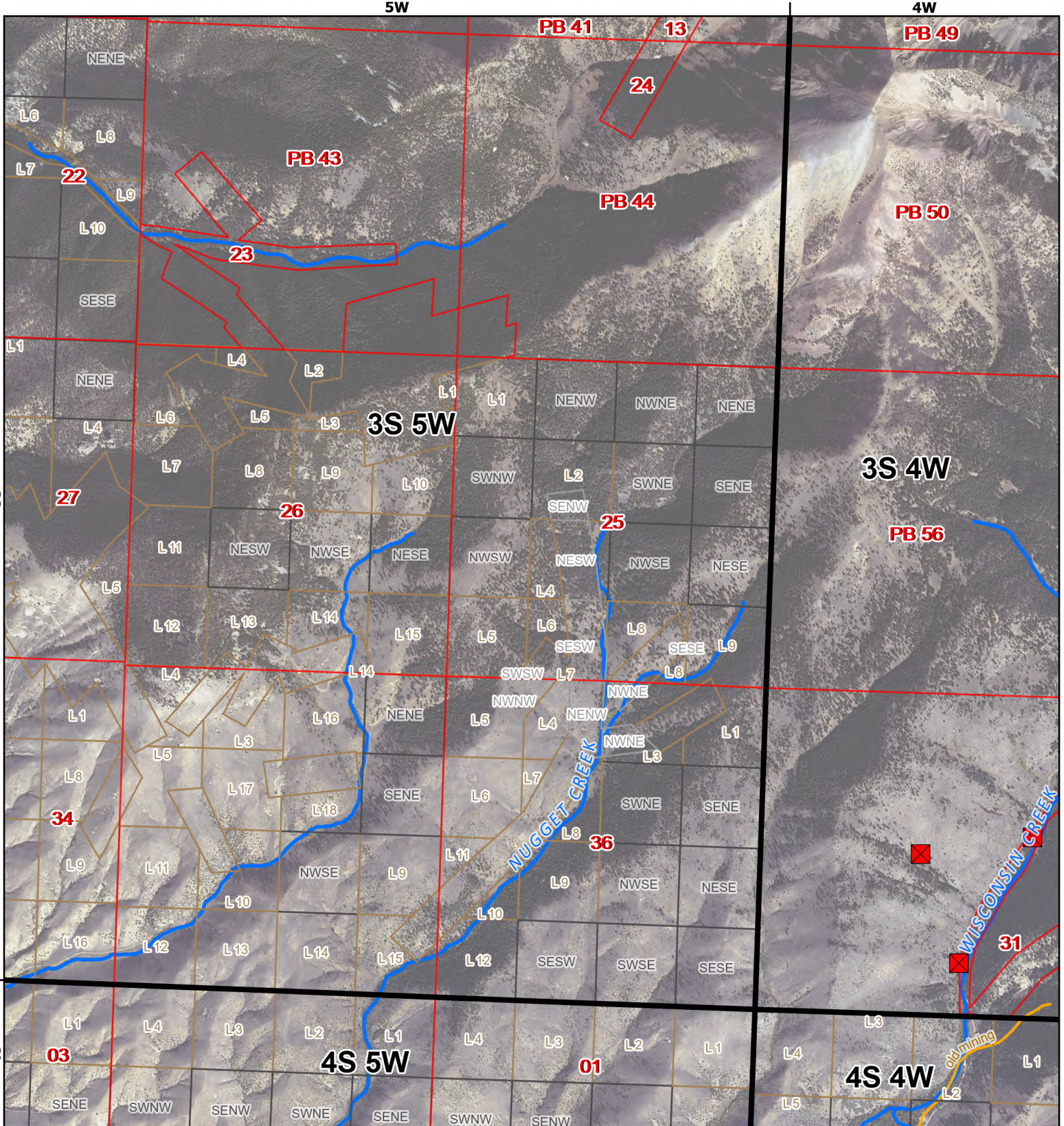
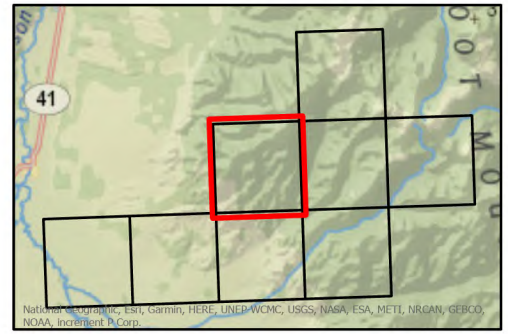
1:26,000
Miles



- Points of Diversion
- Streams
- Canal Ditch

Aerial Photos: 2021 NAIP

* The diversions shown on this map are based on available data. The mapped diversions may not be correct.

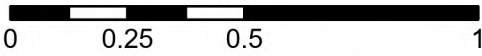




Wisconsin Creek Diversion Sites

RUBY RIVER (Basin Name) - Basin 41C

1:26,000
Miles

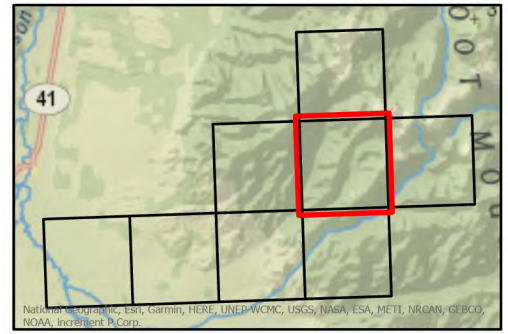


- Points of Diversion
- Streams
- Canal Ditch

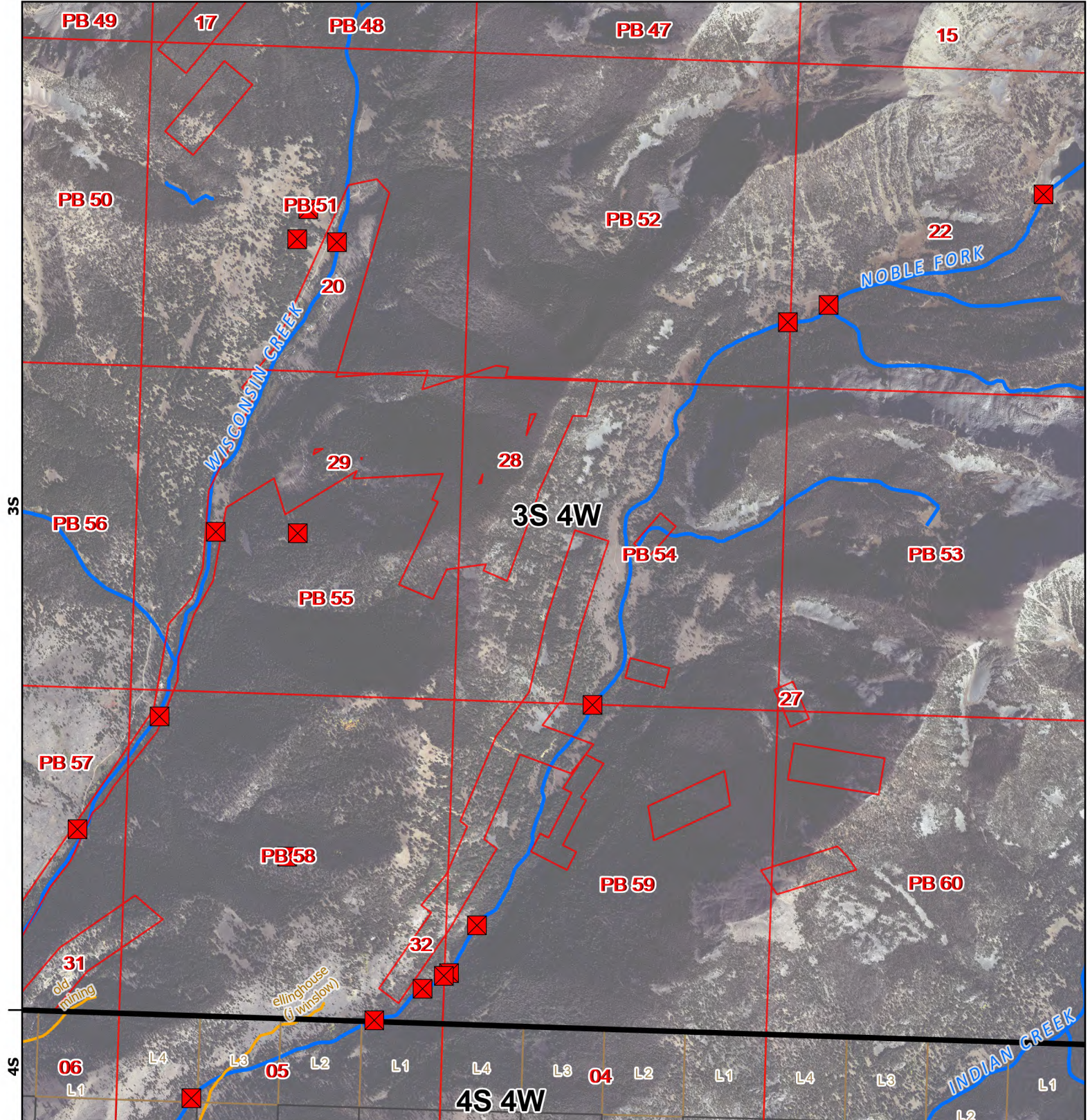
* The diversions shown on this map are based on available data. The mapped diversions may not be correct.

Aerial Photos: 2021 NAIP

4W



National Geographic, Esri, Garmin, HERE, UNEP-WCMC, USGS, NASA, ESA, METI, NRCAN, GEBCO, NOAA, Increment P Corp.

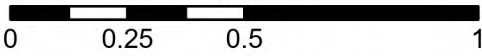




Wisconsin Creek Diversion Sites

RUBY RIVER (Basin Name) - Basin 41C

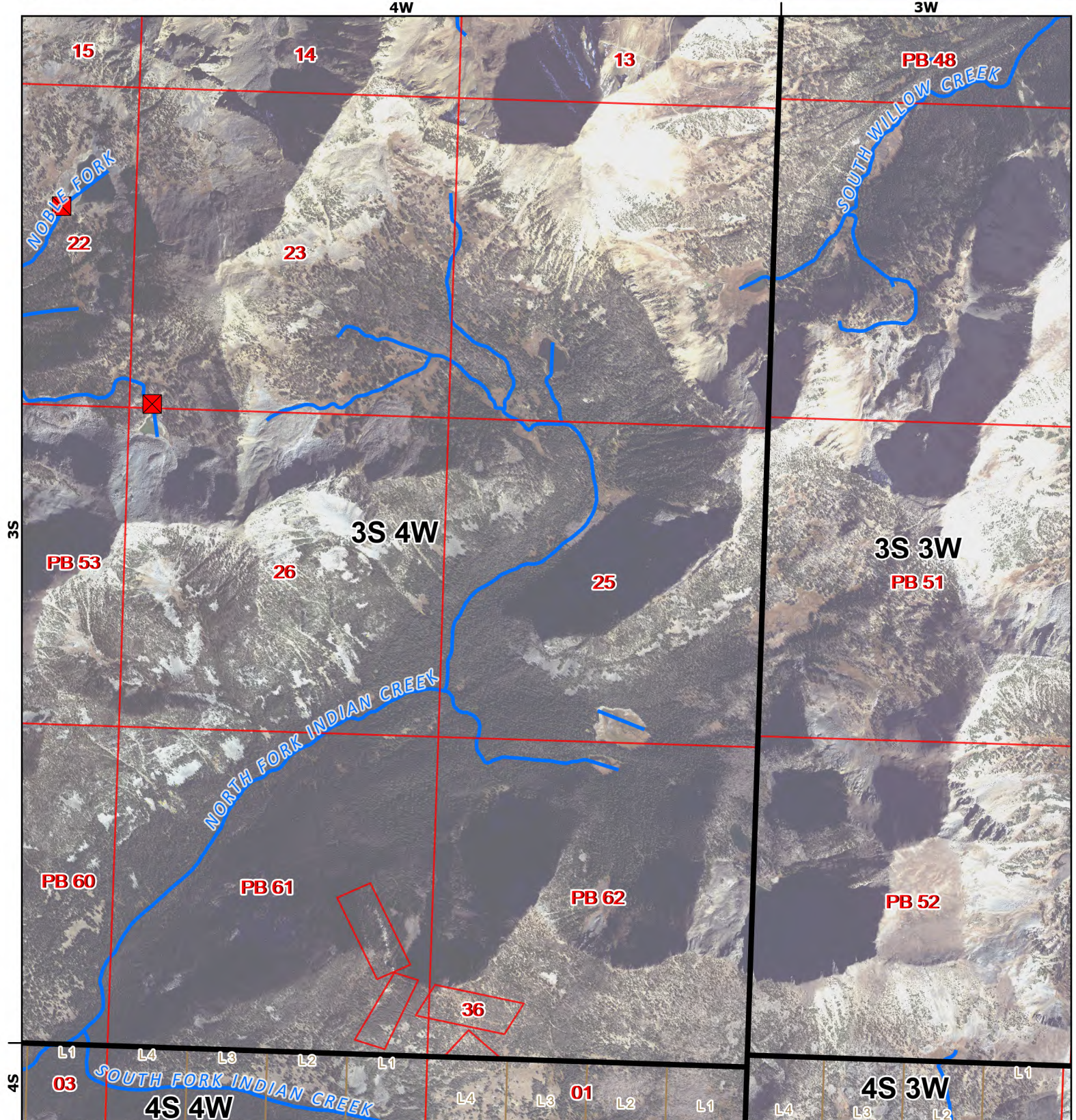
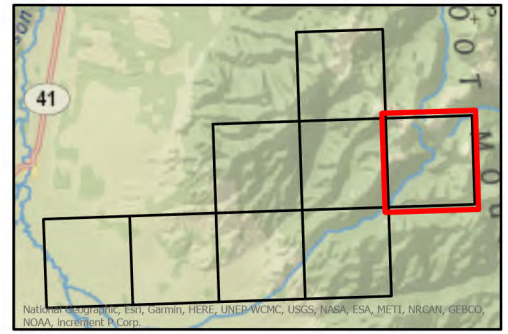
1:26,000
Miles



- Points of Diversion
- Streams
- Canal Ditch

* The diversions shown on this map are based on available data. The mapped diversions may not be correct.

Aerial Photos: 2021 NAIP

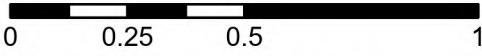




Wisconsin Creek Diversion Sites

RUBY RIVER (Basin Name) - Basin 41C

1:26,000
Miles



- Points of Diversion
- Streams
- Canal Ditch

* The diversions shown on this map are based on available data. The mapped diversions may not be correct.

Aerial Photos: 2021 NAIP

