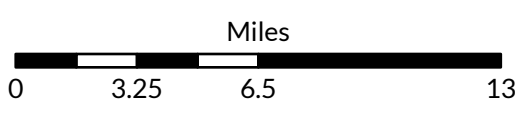
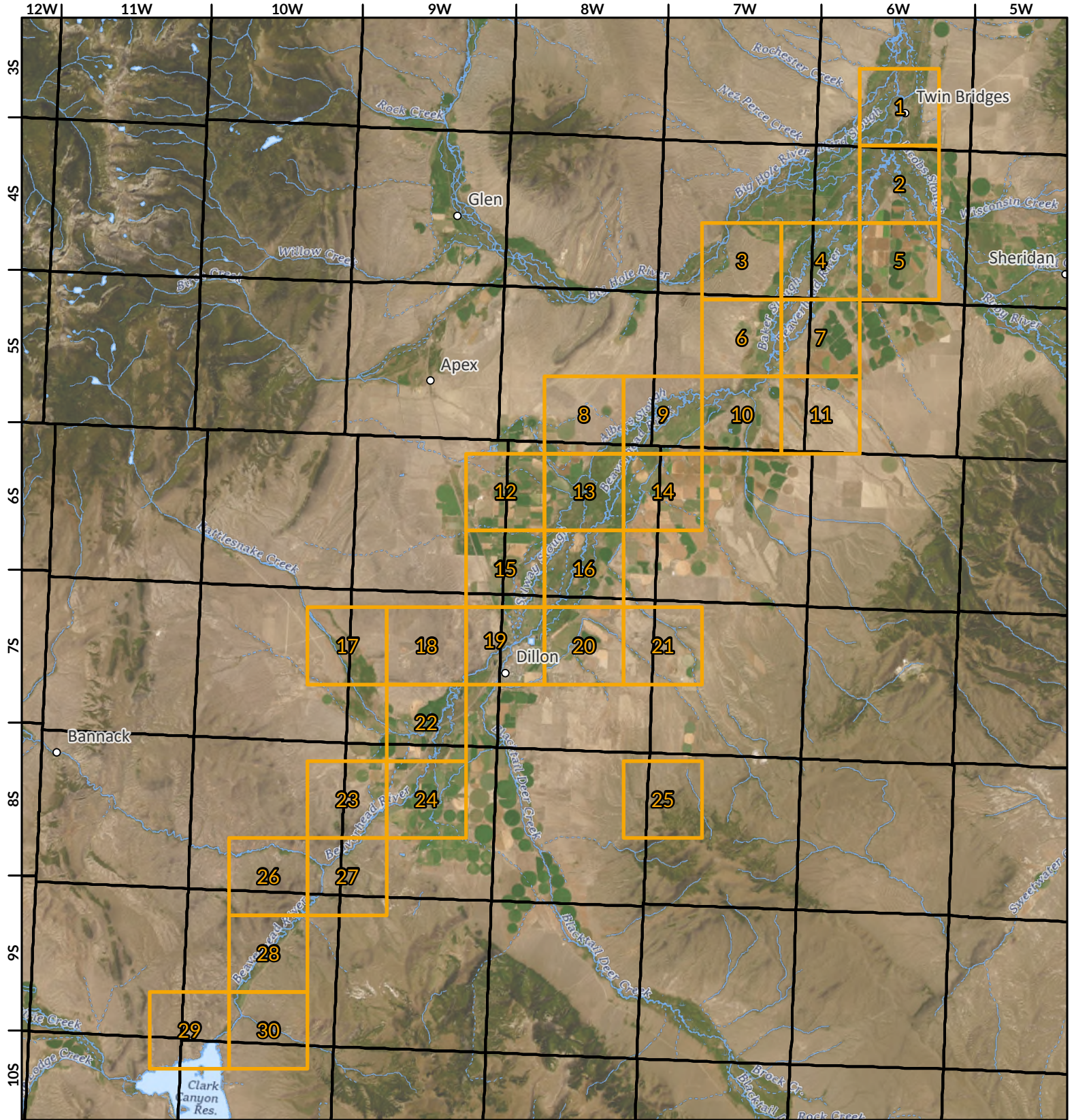


Beaverhead River Diversion Sites

Beaverhead River (Basin Name) - Basin 41B



The Montana Department of
**Natural Resources
& Conservation**



1:326,000



- Page # Index
- Township

- Interstate
- Cities and Towns

Aerial Photos: 2021 NAIP

Beaverhead River Diversion Sites

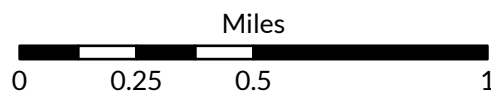
Beaverhead River (Basin Name) - Basin 41B



The Montana Department of Natural Resources & Conservation



- Points of Diversion
- Streams
- Canal Ditch

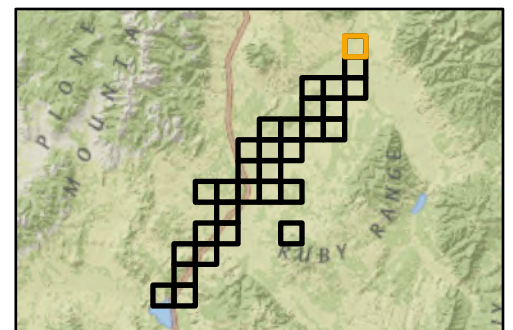


1:26,000



Aerial Photos: 2021 NAIP

* The diversions shown on this map are based on available data. The mapped diversions may not be correct.



Beaverhead River Diversion Sites

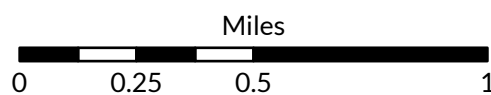
Beaverhead River (Basin Name) - Basin 41B



The Montana Department of
Natural Resources
& Conservation



- Points of Diversion
- Streams
- Canal Ditch

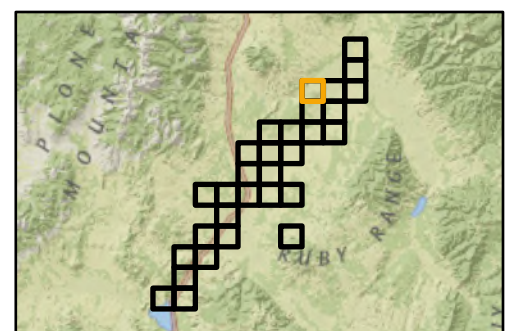


1:26,000



Aerial Photos: 2021 NAIP

* The diversions shown on this map are based on available data.
The mapped diversions may not be correct.



Beaverhead River Diversion Sites

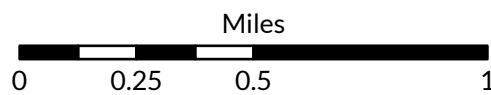
Beaverhead River (Basin Name) - Basin 41B



The Montana Department of
Natural Resources
& Conservation



- Points of Diversion
- Streams
- Canal Ditch

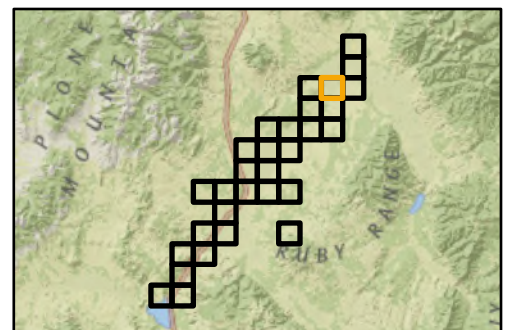


1:26,000



Aerial Photos: 2021 NAIP

* The diversions shown on this map are based on available data.
The mapped diversions may not be correct.






Beaverhead River Diversion Sites

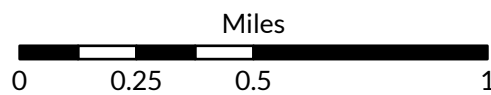
Beaverhead River (Basin Name) - Basin 41B



The Montana Department of
Natural Resources
& Conservation



-  Points of Diversion
-  Streams
-  Canal Ditch

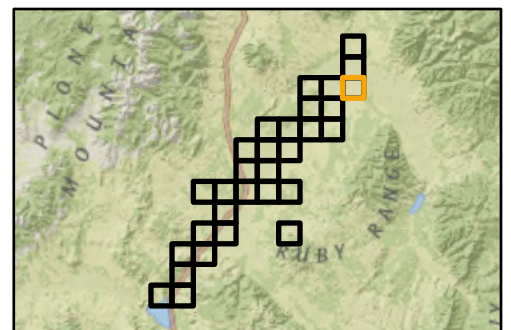


1:26,000



Aerial Photos: 2021 NAIP

* The diversions shown on this map are based on available data.
The mapped diversions may not be correct.



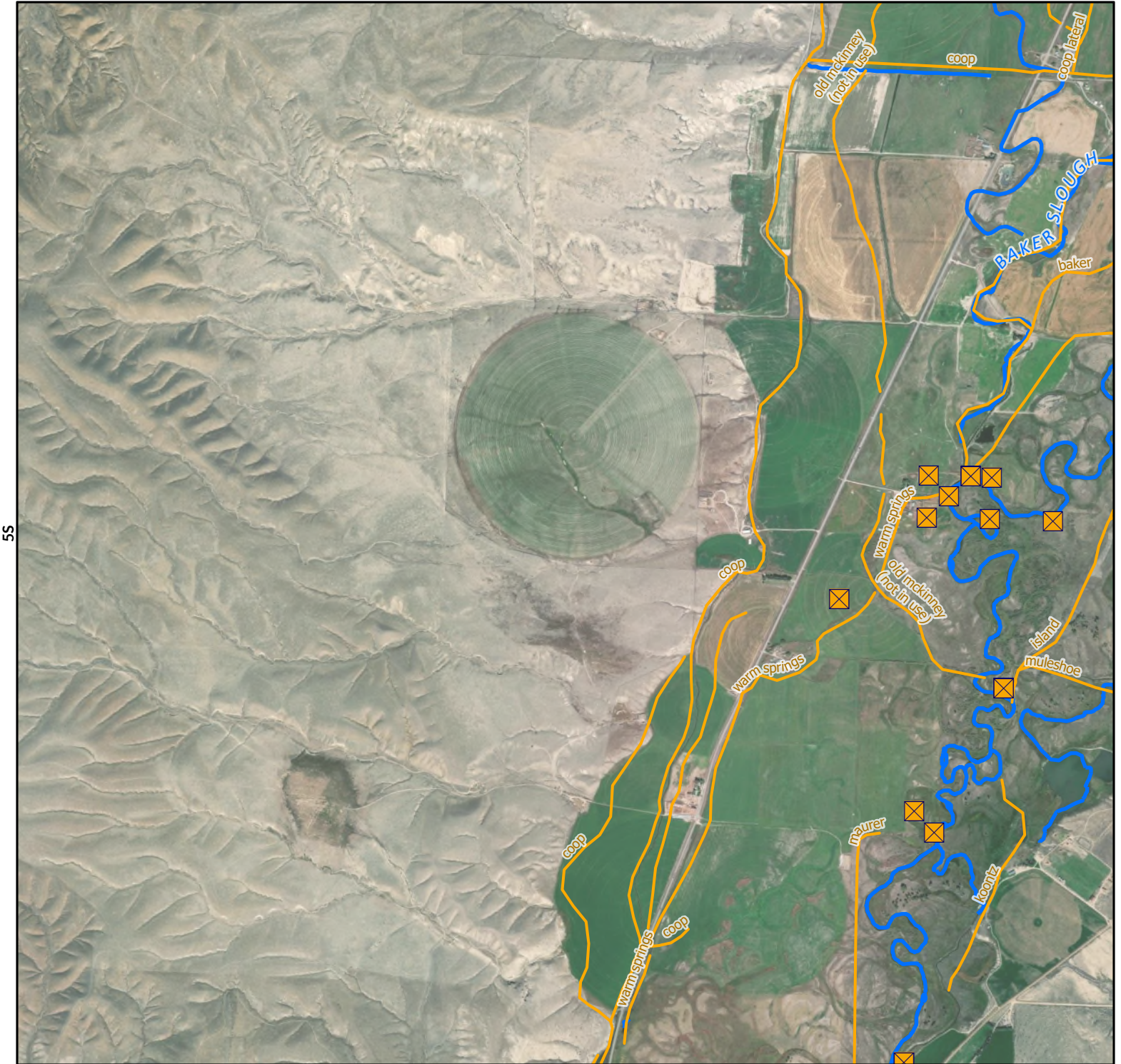
Beaverhead River Diversion Sites

Beaverhead River (Basin Name) - Basin 41B



The Montana Department of Natural Resources & Conservation

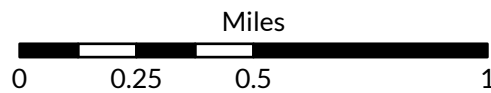
7W



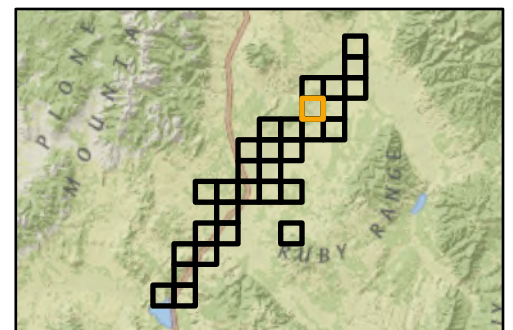
- Points of Diversion
- Streams
- Canal Ditch

Aerial Photos: 2021 NAIP

* The diversions shown on this map are based on available data. The mapped diversions may not be correct.



1:26,000



Beaverhead River Diversion Sites

Beaverhead River (Basin Name) - Basin 41B



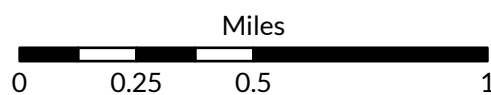
The Montana Department of
Natural Resources
& Conservation



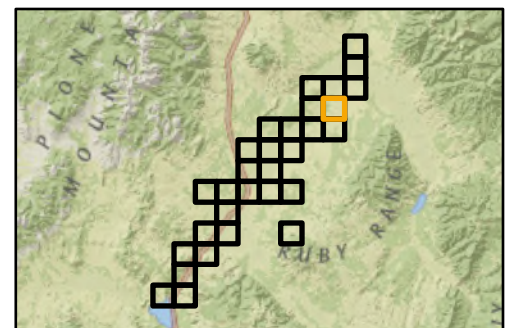
- Points of Diversion
- Streams
- Canal Ditch

Aerial Photos: 2021 NAIP

* The diversions shown on this map are based on available data. The mapped diversions may not be correct.



1:26,000



Beaverhead River Diversion Sites

Beaverhead River (Basin Name) - Basin 41B

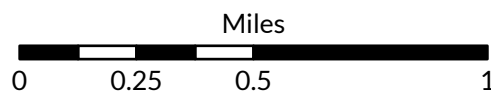


The Montana Department of
**Natural Resources
& Conservation**

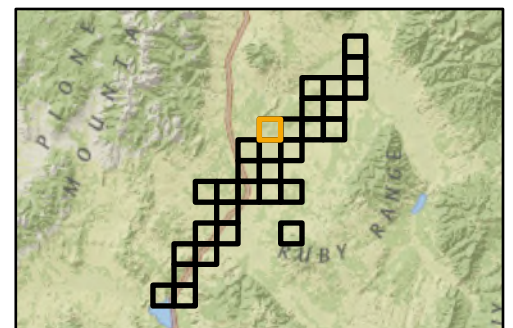
8W



- ☒ Points of Diversion
- ~ Streams
- ~ Canal Ditch



1:26,000



Aerial Photos: 2021 NAIP

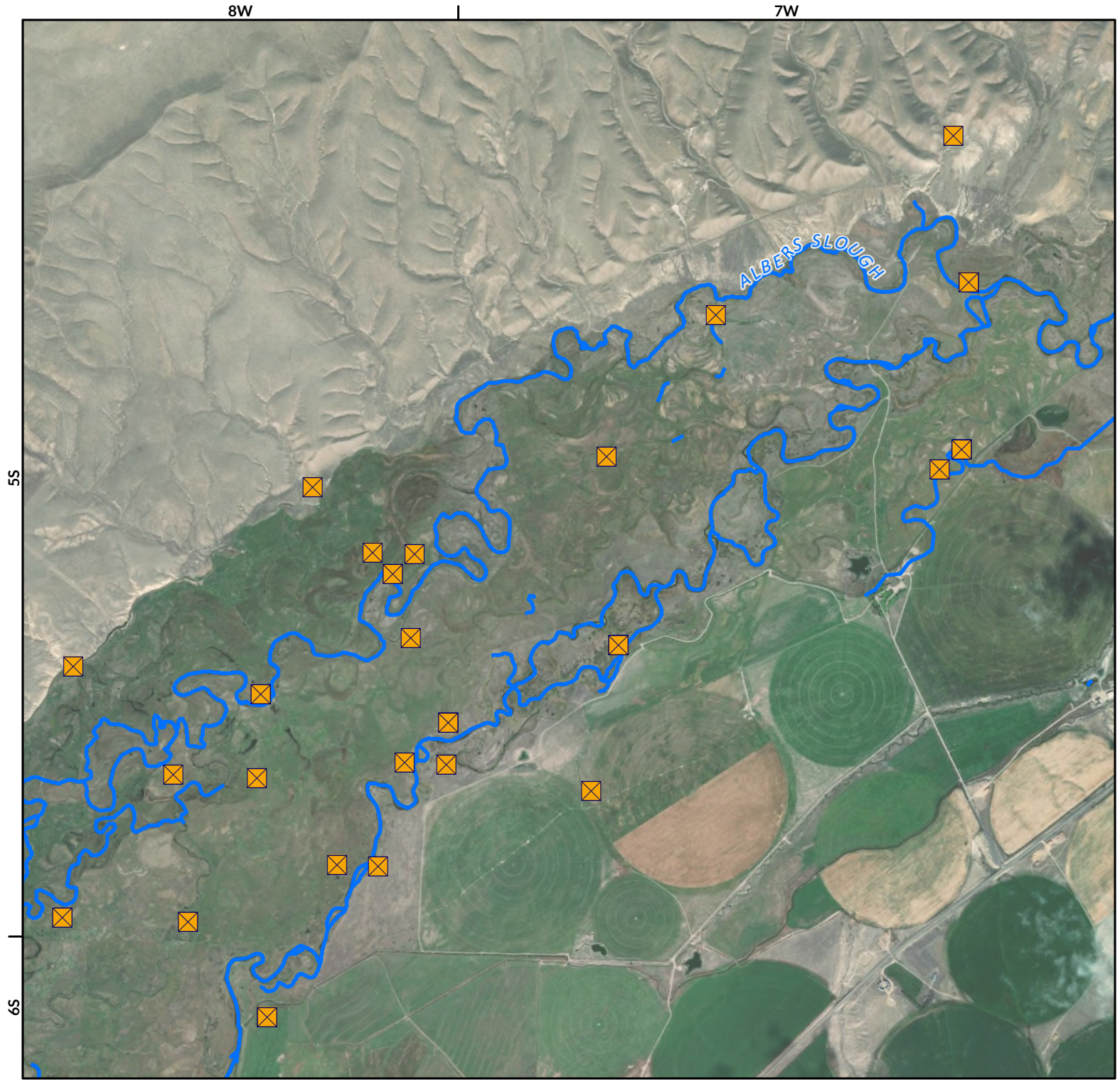
* The diversions shown on this map are based on available data.
The mapped diversions may not be correct.




Beaverhead River Diversion Sites

Beaverhead River (Basin Name) - Basin 41B



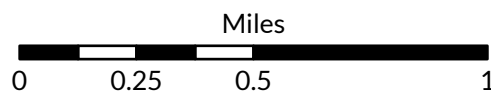
The Montana Department of
Natural Resources
& Conservation



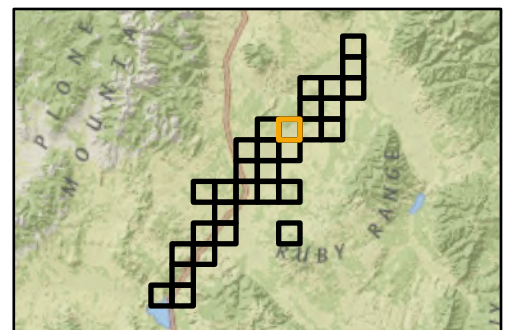
-  Points of Diversion
-  Streams
-  Canal Ditch

Aerial Photos: 2021 NAIP

* The diversions shown on this map are based on available data.
The mapped diversions may not be correct.



1:26,000



Beaverhead River Diversion Sites

Beaverhead River (Basin Name) - Basin 41B



The Montana Department of
**Natural Resources
& Conservation**

7W

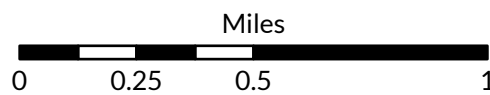
6W



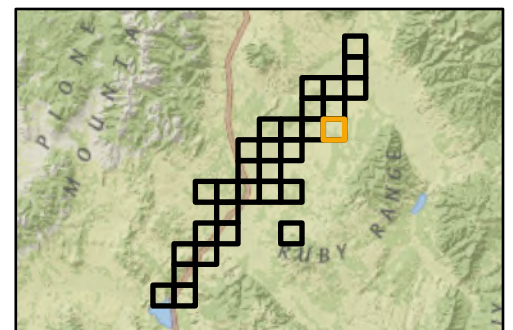
- ☒ Points of Diversion
- ~ Streams
- ~ Canal Ditch

Aerial Photos: 2021 NAIP

* The diversions shown on this map are based on available data.
The mapped diversions may not be correct.



1:26,000



Beaverhead River Diversion Sites

Beaverhead River (Basin Name) - Basin 41B



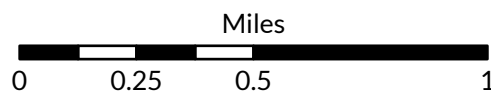
The Montana Department of
**Natural Resources
& Conservation**

9W

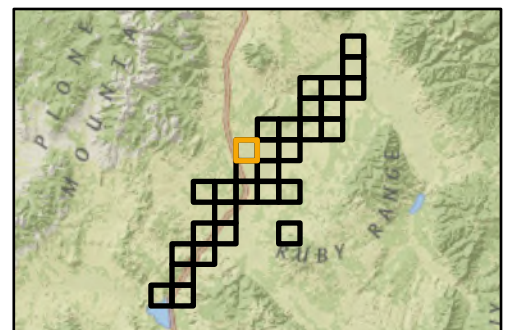
8W



- Points of Diversion
- Streams
- Canal Ditch



1:26,000



Aerial Photos: 2021 NAIP

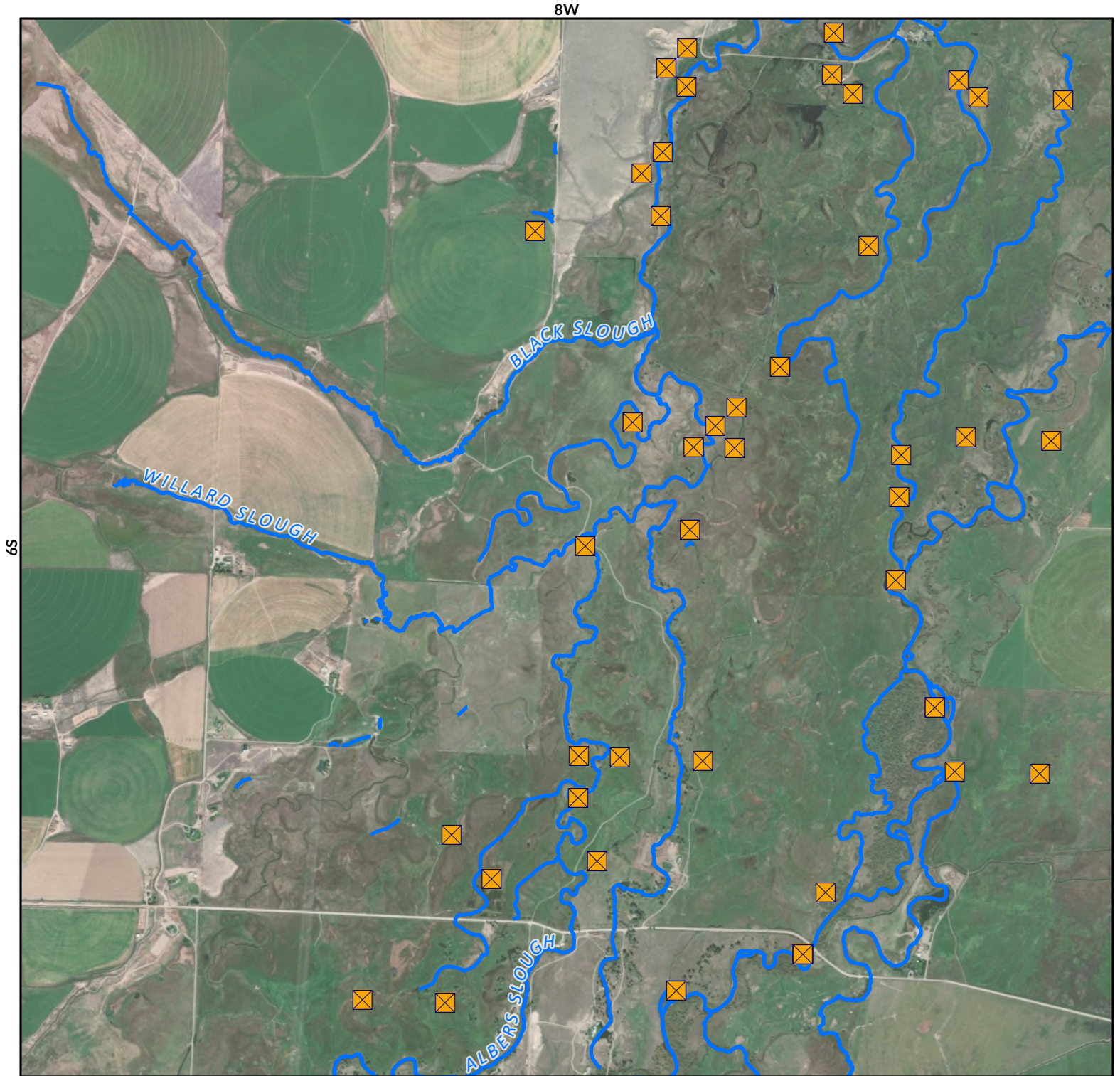
* The diversions shown on this map are based on available data.
The mapped diversions may not be correct.

Beaverhead River Diversion Sites

Beaverhead River (Basin Name) - Basin 41B



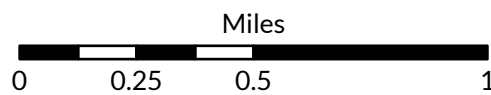
The Montana Department of
**Natural Resources
& Conservation**



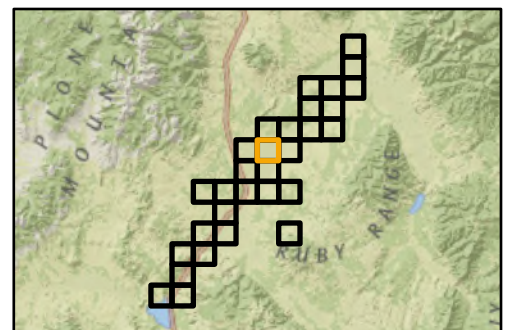
- Points of Diversion
- Streams
- Canal Ditch

Aerial Photos: 2021 NAIP

* The diversions shown on this map are based on available data.
The mapped diversions may not be correct.



1:26,000



Beaverhead River Diversion Sites

Beaverhead River (Basin Name) - Basin 41B



The Montana Department of
**Natural Resources
& Conservation**

8W

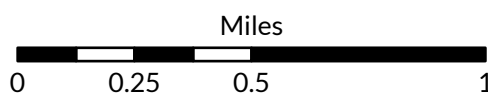
7W



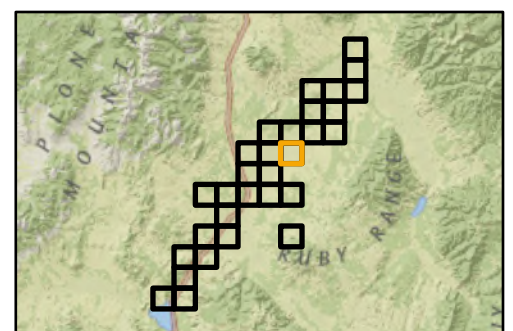
- Points of Diversion
- Streams
- Canal Ditch

Aerial Photos: 2021 NAIP

* The diversions shown on this map are based on available data.
The mapped diversions may not be correct.



1:26,000

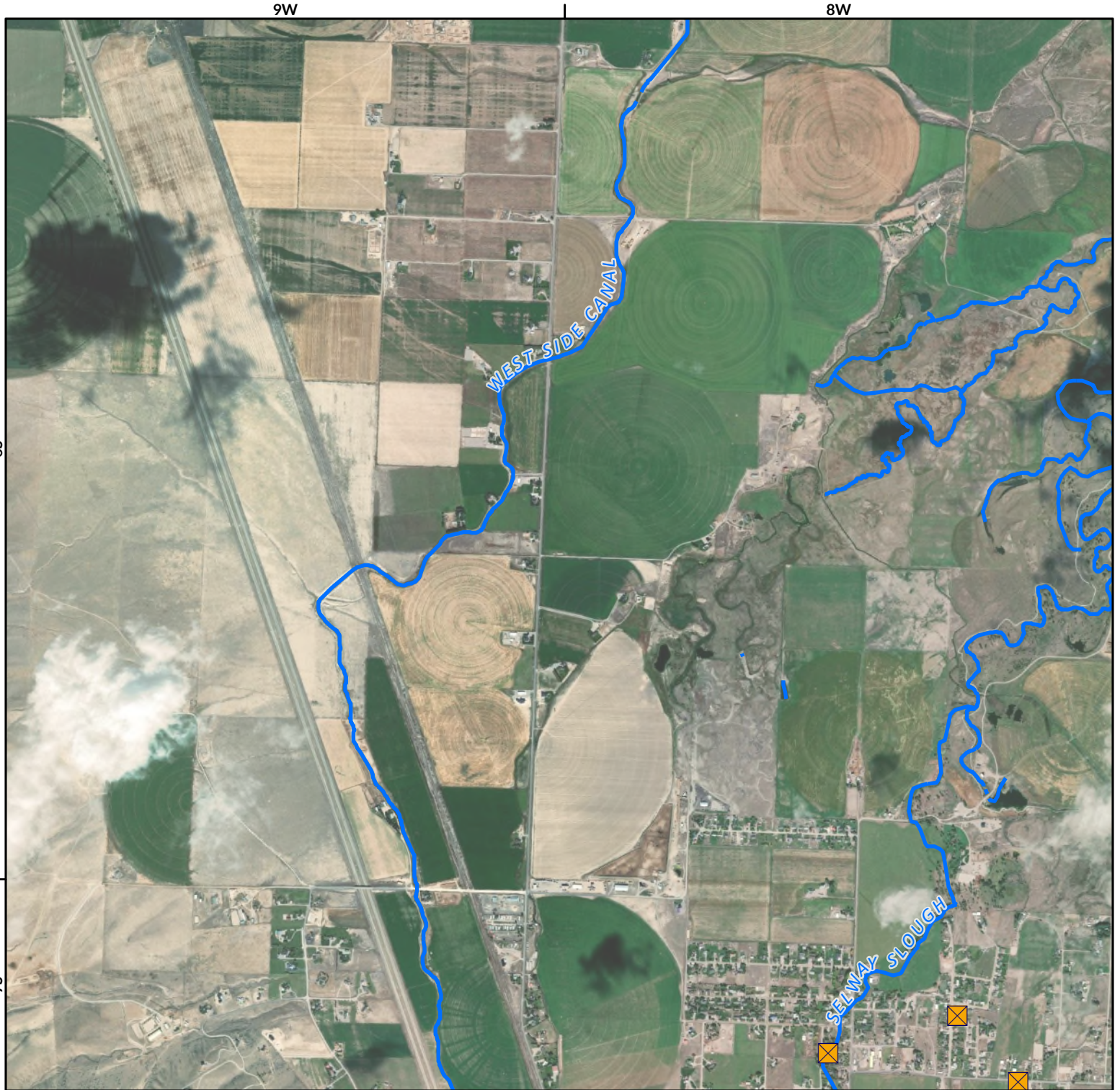


Beaverhead River Diversion Sites

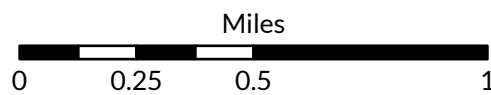
Beaverhead River (Basin Name) - Basin 41B



The Montana Department of
**Natural Resources
& Conservation**



- ☒ Points of Diversion
- ~ Streams
- ~ Canal Ditch

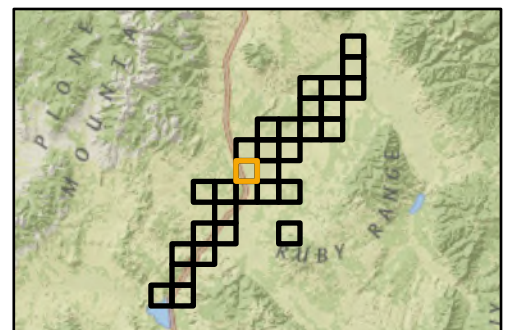


1:26,000



Aerial Photos: 2021 NAIP

* The diversions shown on this map are based on available data. The mapped diversions may not be correct.

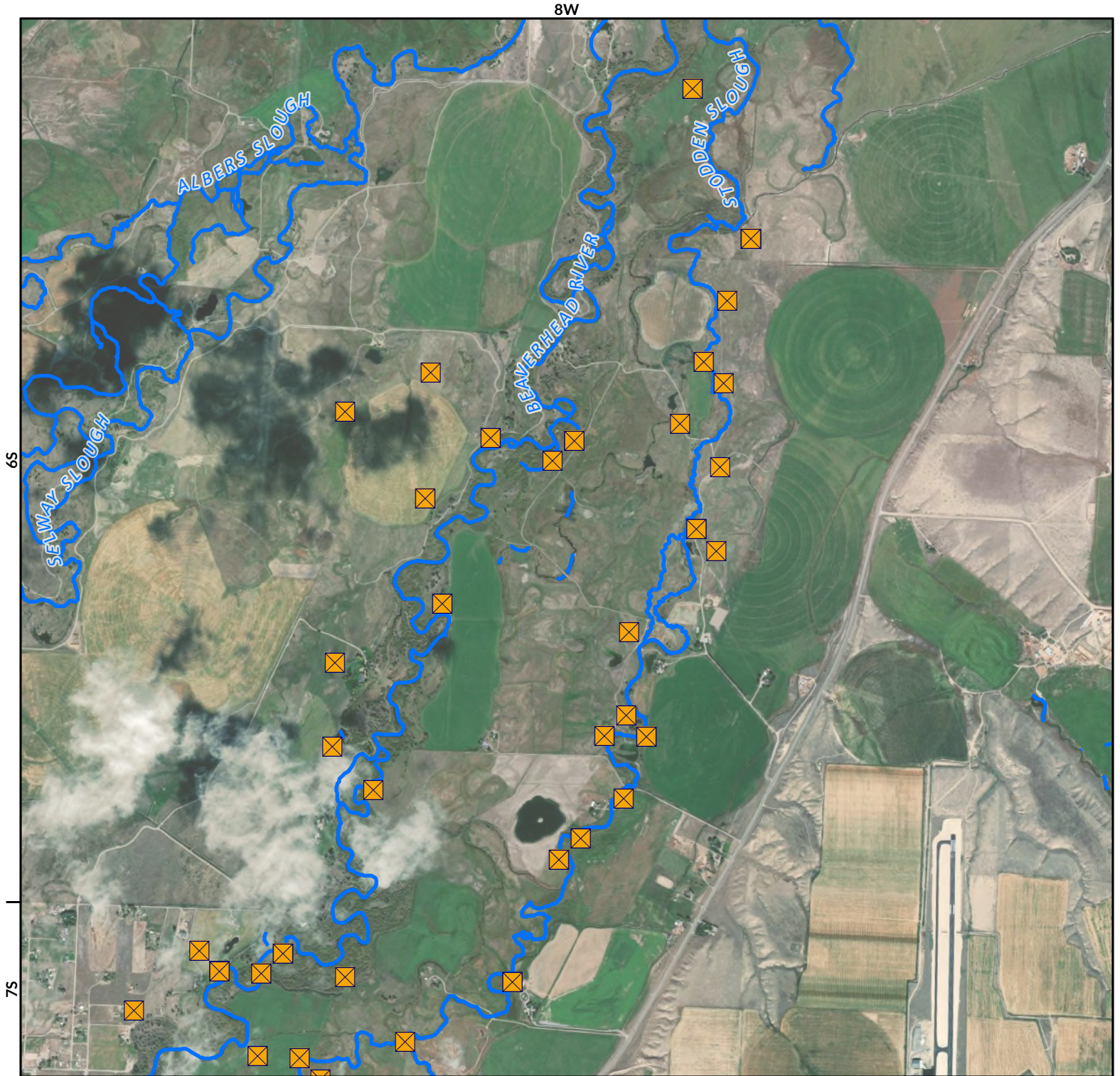


Beaverhead River Diversion Sites

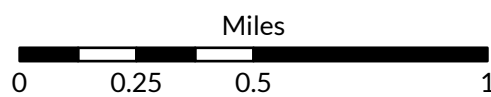
Beaverhead River (Basin Name) - Basin 41B



The Montana Department of
Natural Resources
& Conservation



- Points of Diversion
- Streams
- Canal Ditch

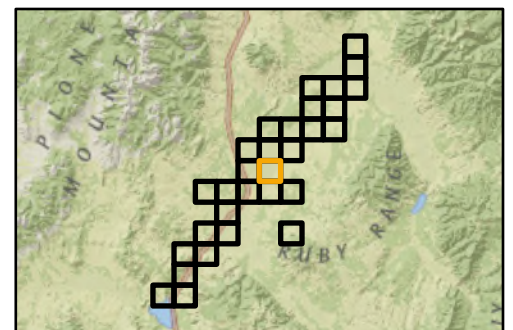


1:26,000



Aerial Photos: 2021 NAIP

* The diversions shown on this map are based on available data.
The mapped diversions may not be correct.



Beaverhead River Diversion Sites

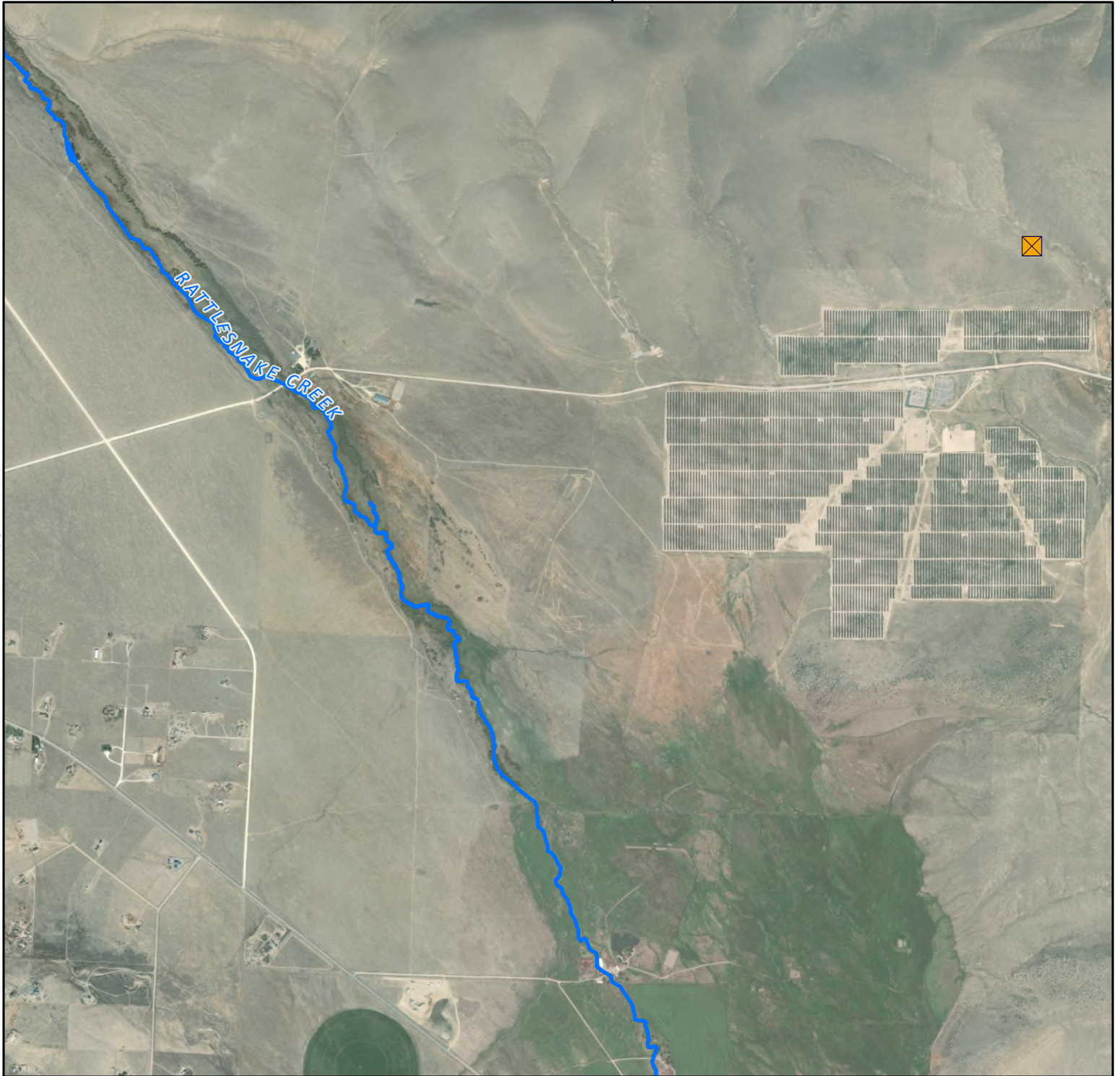
Beaverhead River (Basin Name) - Basin 41B



The Montana Department of
**Natural Resources
& Conservation**

10W

9W



7S

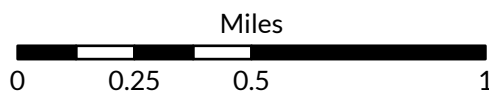
☒ Points of Diversion

~ Streams

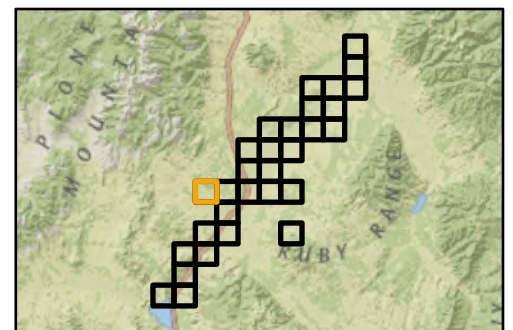
~ Canal Ditch

Aerial Photos: 2021 NAIP

* The diversions shown on this map are based on available data.
The mapped diversions may not be correct.



1:26,000



Beaverhead River Diversion Sites

Beaverhead River (Basin Name) - Basin 41B



The Montana Department of
**Natural Resources
& Conservation**

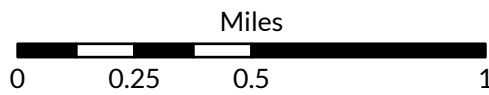
9W



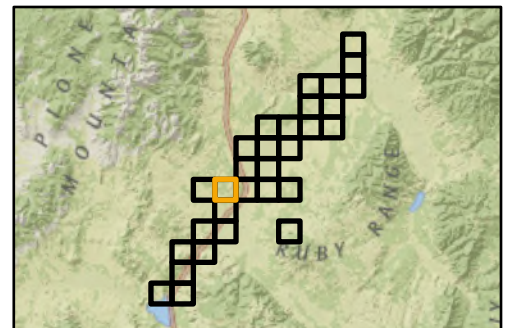
- Points of Diversion
- Streams
- Canal Ditch

Aerial Photos: 2021 NAIP

* The diversions shown on this map are based on available data.
The mapped diversions may not be correct.



1:26,000

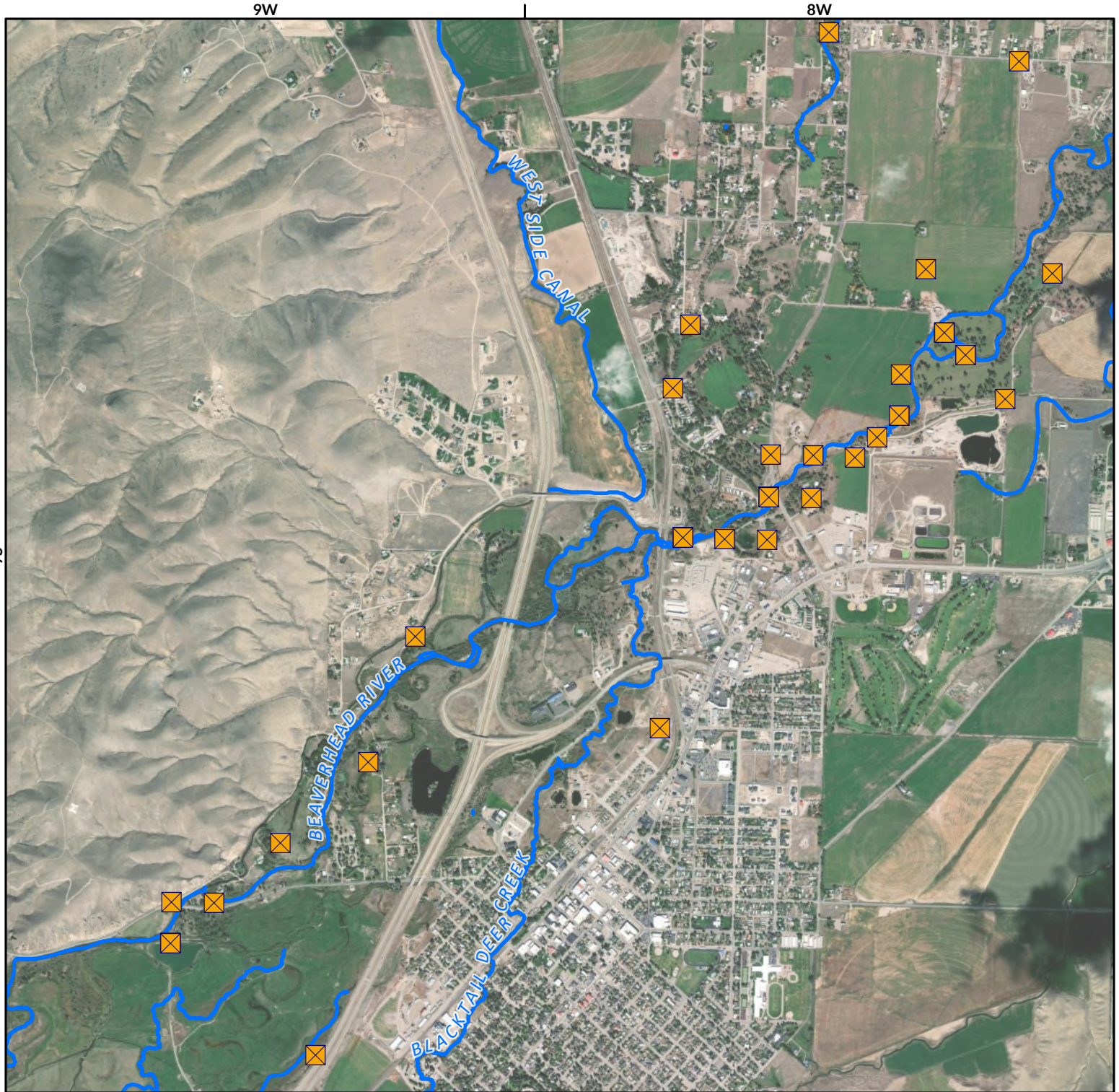


Beaverhead River Diversion Sites

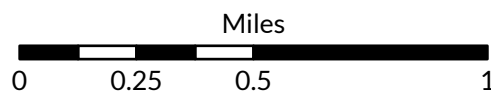
Beaverhead River (Basin Name) - Basin 41B



The Montana Department of
Natural Resources
& Conservation



- Points of Diversion
- Streams
- Canal Ditch

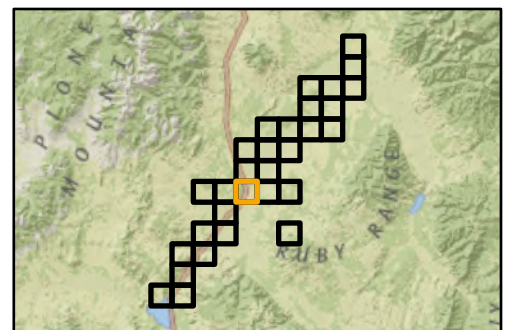


1:26,000



Aerial Photos: 2021 NAIP

* The diversions shown on this map are based on available data.
The mapped diversions may not be correct.



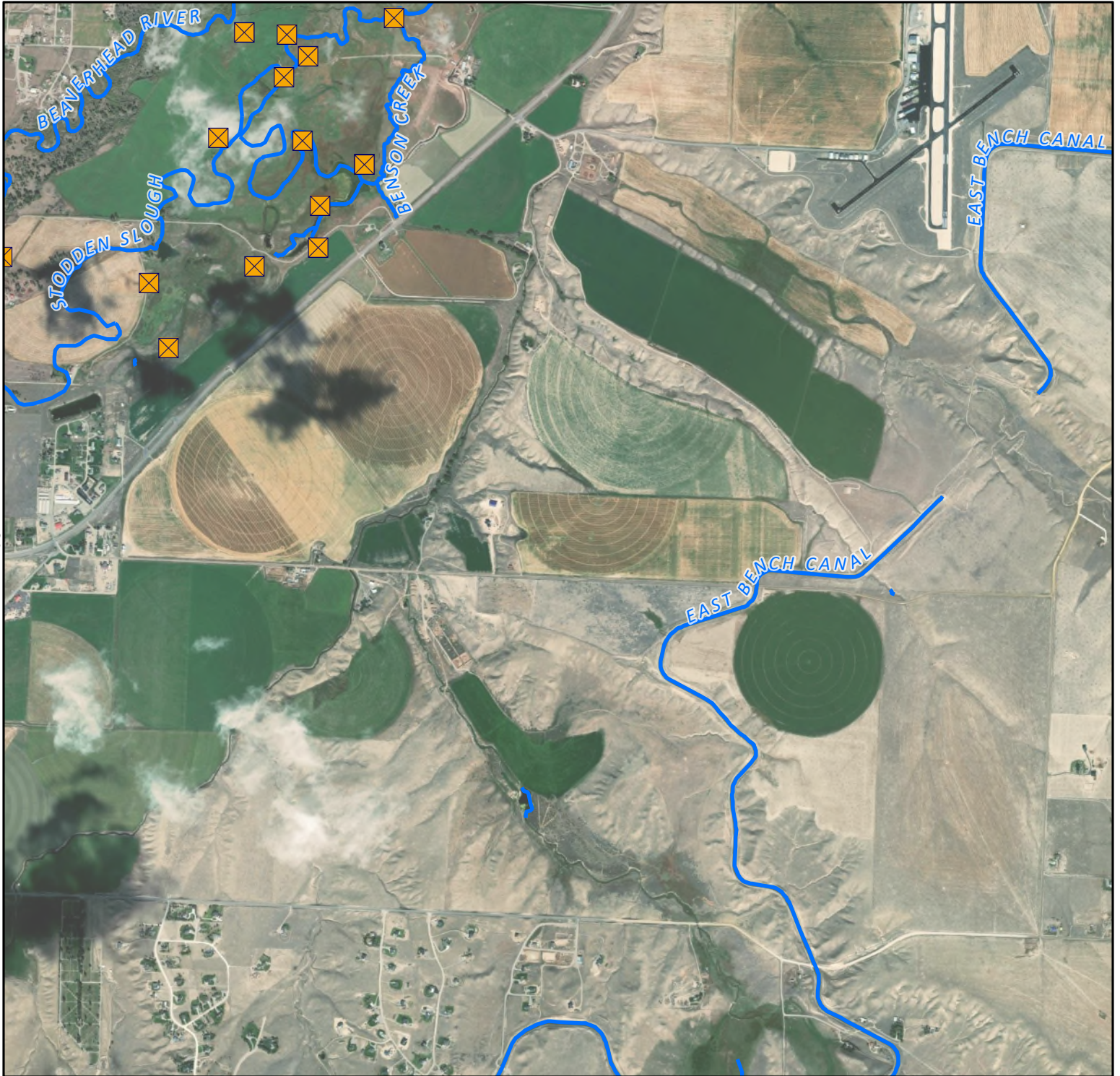
Beaverhead River Diversion Sites

Beaverhead River (Basin Name) - Basin 41B



The Montana Department of
Natural Resources
& Conservation

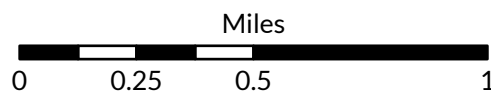
8W



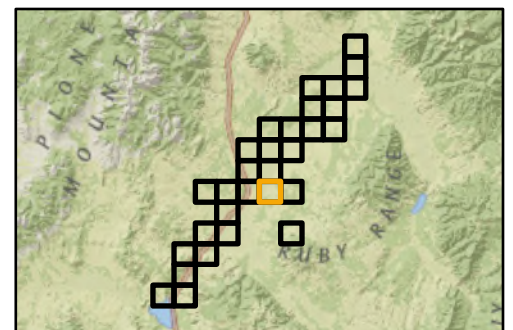
- Points of Diversion
- Streams
- Canal Ditch

Aerial Photos: 2021 NAIP

* The diversions shown on this map are based on available data.
The mapped diversions may not be correct.



1:26,000



Beaverhead River Diversion Sites

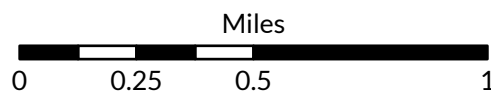
Beaverhead River (Basin Name) - Basin 41B



The Montana Department of
**Natural Resources
& Conservation**



- ☒ Points of Diversion
- ~ Streams
- ~ Canal Ditch

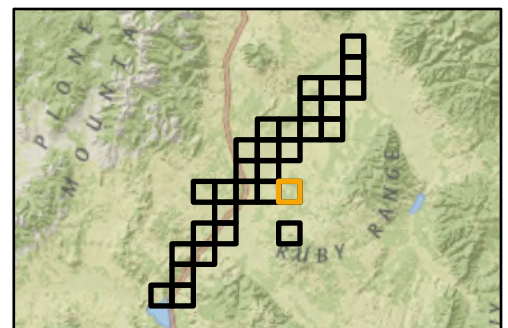


1:26,000



Aerial Photos: 2021 NAIP

* The diversions shown on this map are based on available data.
The mapped diversions may not be correct.



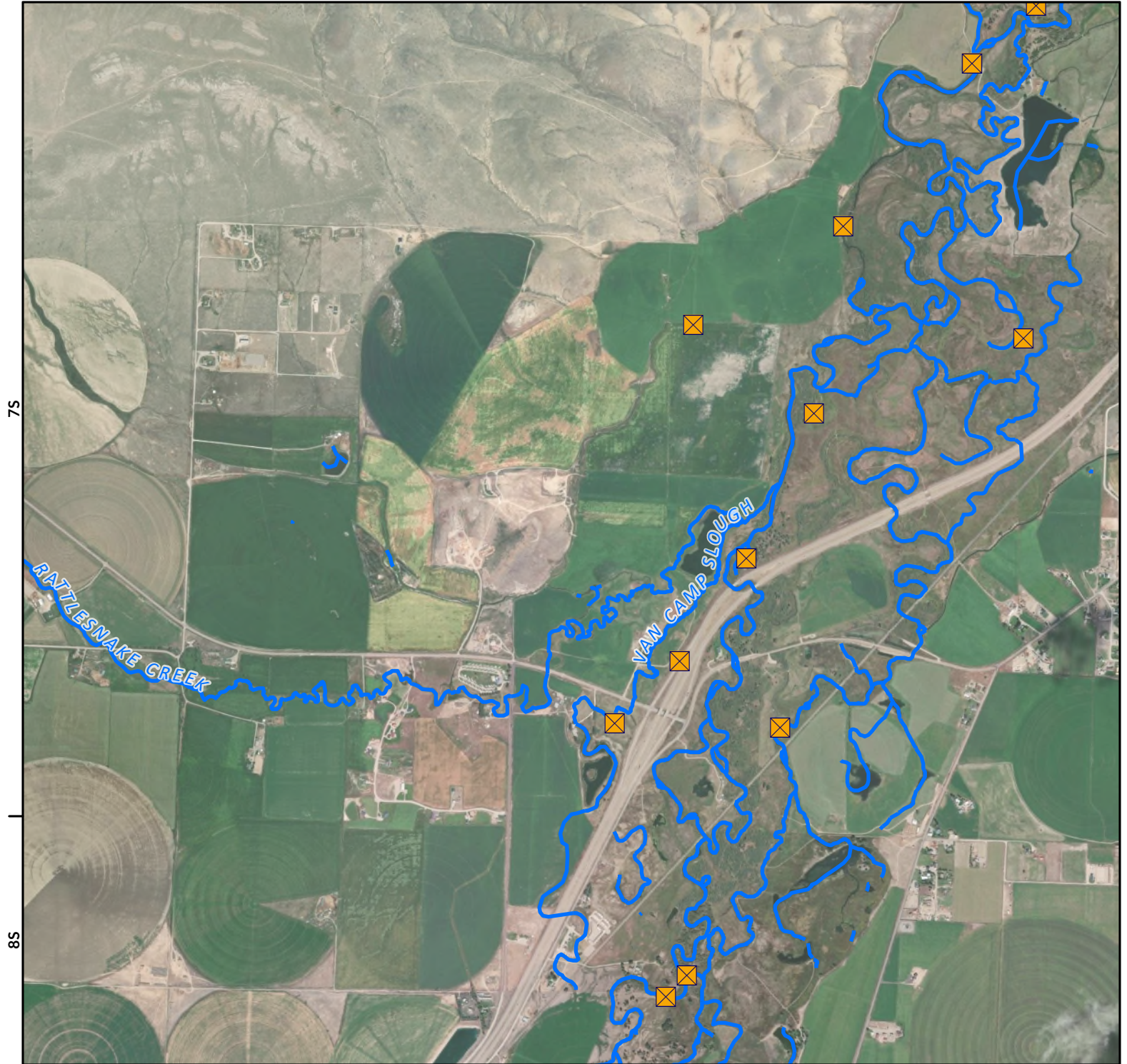
Beaverhead River Diversion Sites




Beaverhead River (Basin Name) - Basin 41B

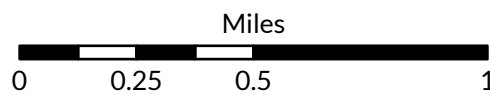


The Montana Department of
Natural Resources
& Conservation

9W



-  Points of Diversion
-  Streams
-  Canal Ditch

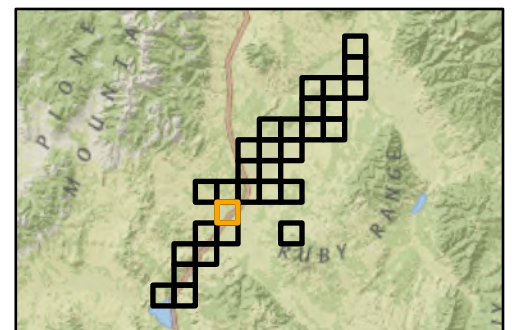


1:26,000



Aerial Photos: 2021 NAIP

* The diversions shown on this map are based on available data.
The mapped diversions may not be correct.



Beaverhead River Diversion Sites

Beaverhead River (Basin Name) - Basin 41B






The Montana Department of
Natural Resources
& Conservation

10W

9W

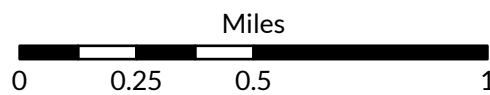
8S



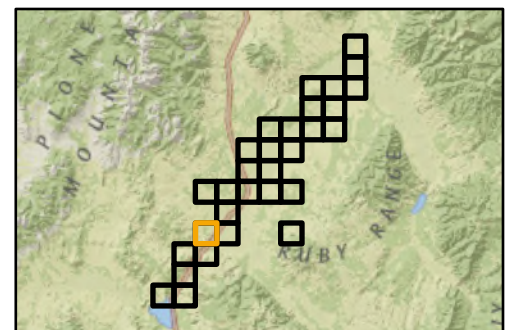
-  Points of Diversion
-  Streams
-  Canal Ditch

Aerial Photos: 2021 NAIP

* The diversions shown on this map are based on available data.
The mapped diversions may not be correct.



1:26,000



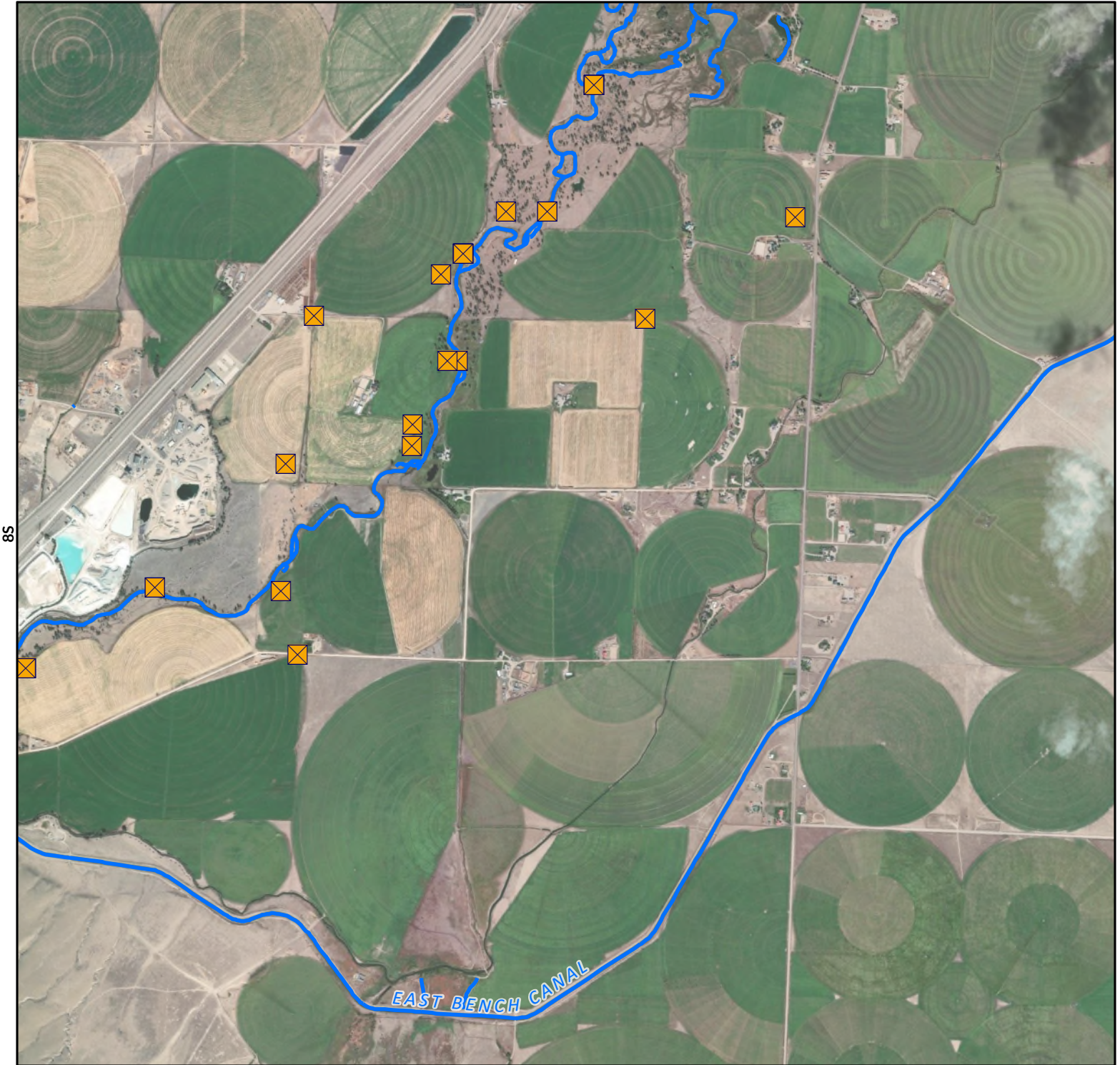
Beaverhead River Diversion Sites

Beaverhead River (Basin Name) - Basin 41B



The Montana Department of
Natural Resources
& Conservation

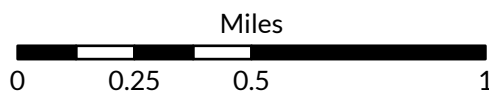
9W



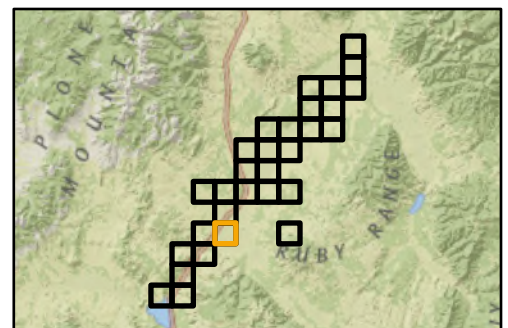
- Points of Diversion
- Streams
- Canal Ditch

Aerial Photos: 2021 NAIP

* The diversions shown on this map are based on available data.
The mapped diversions may not be correct.



1:26,000



Beaverhead River Diversion Sites

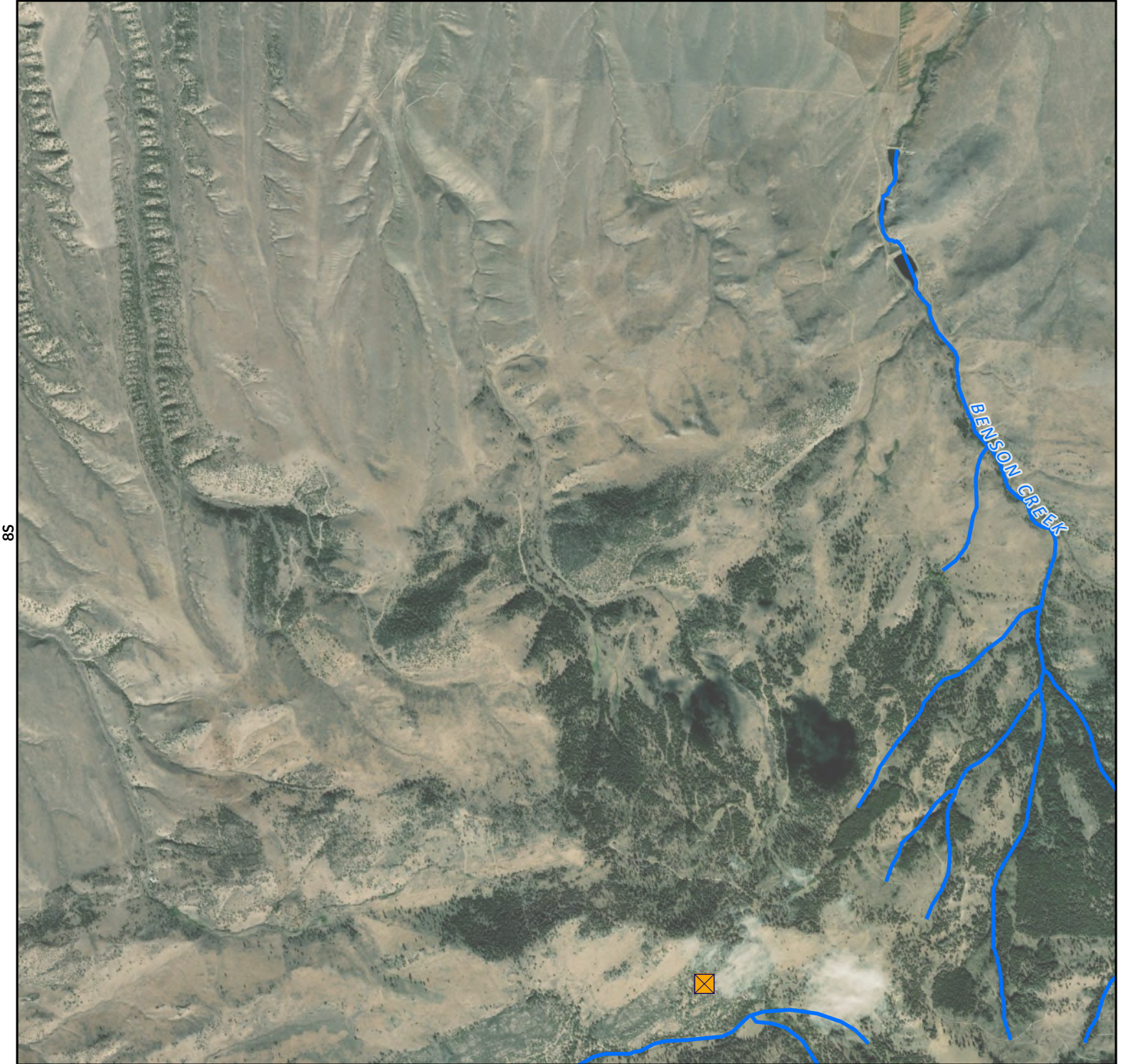
Beaverhead River (Basin Name) - Basin 41B



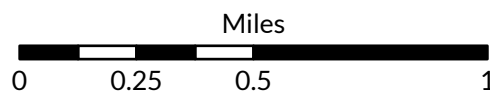
The Montana Department of
**Natural Resources
& Conservation**

8W

7W



- Points of Diversion
- Streams
- Canal Ditch

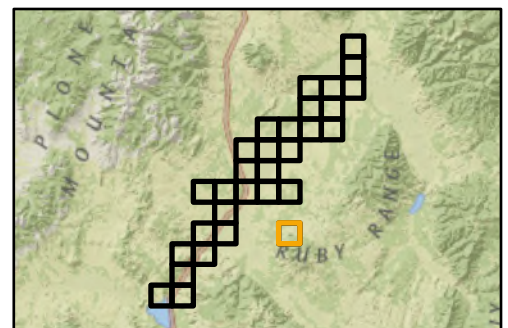


1:26,000



Aerial Photos: 2021 NAIP

* The diversions shown on this map are based on available data.
The mapped diversions may not be correct.



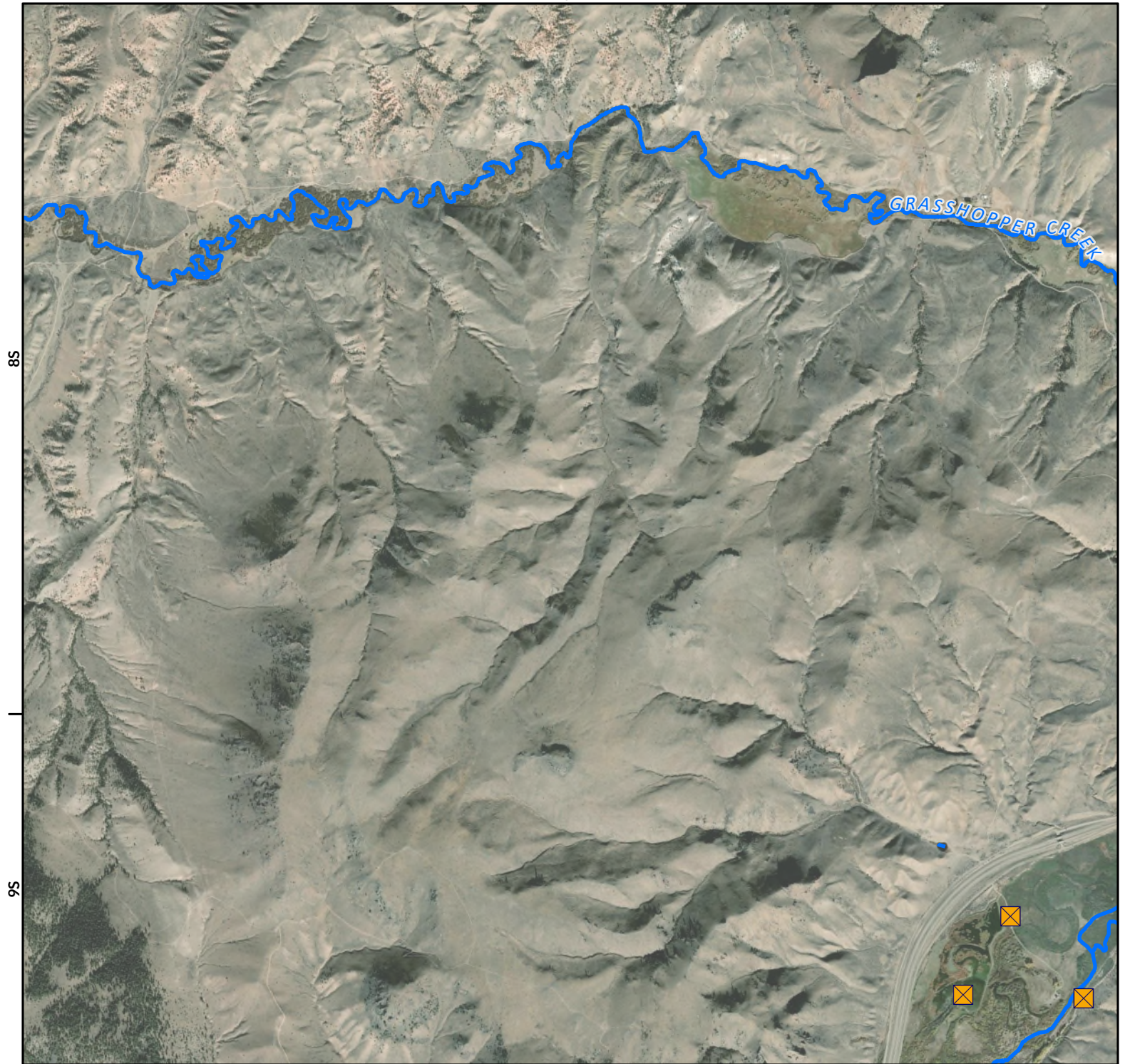
Beaverhead River Diversion Sites

Beaverhead River (Basin Name) - Basin 41B

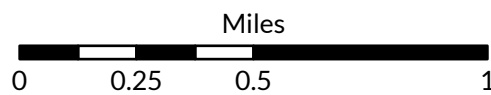


The Montana Department of
**Natural Resources
& Conservation**

10W



- ✕ Points of Diversion
- ~ Streams
- ~ Canal Ditch

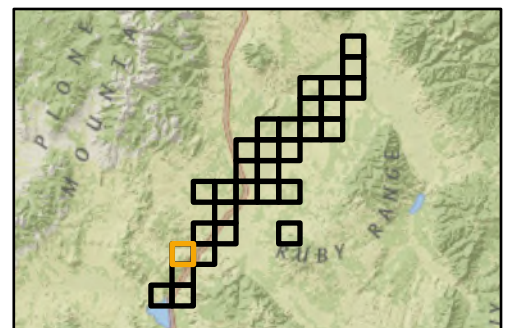


1:26,000



Aerial Photos: 2021 NAIP

* The diversions shown on this map are based on available data.
The mapped diversions may not be correct.



Beaverhead River Diversion Sites

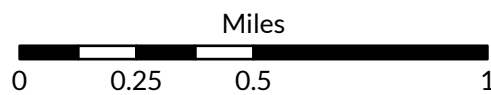
Beaverhead River (Basin Name) - Basin 41B



The Montana Department of
**Natural Resources
& Conservation**



- Points of Diversion
- Streams
- Canal Ditch

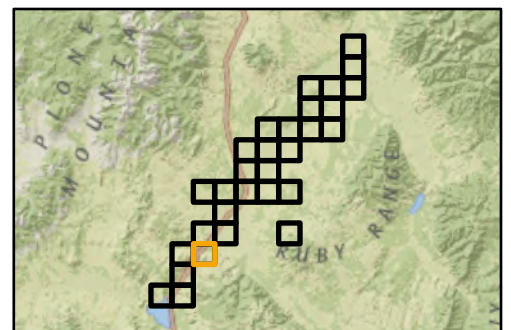


1:26,000



Aerial Photos: 2021 NAIP

* The diversions shown on this map are based on available data.
The mapped diversions may not be correct.



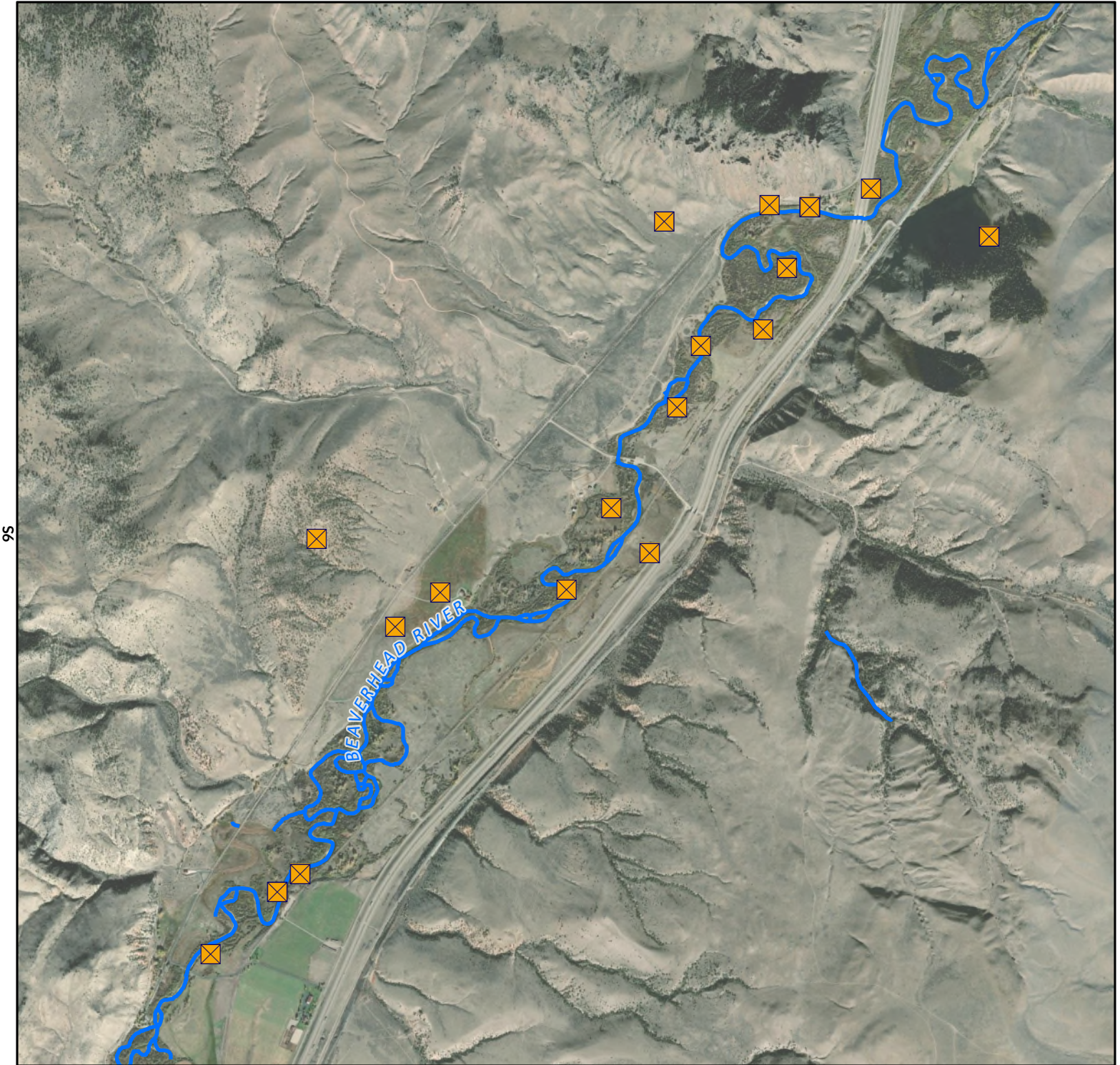
Beaverhead River Diversion Sites

Beaverhead River (Basin Name) - Basin 41B

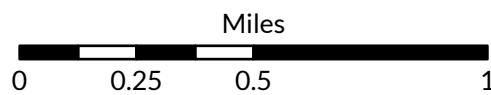


The Montana Department of
**Natural Resources
& Conservation**

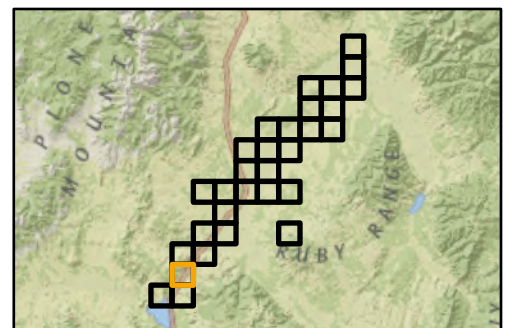
10W



- ☒ Points of Diversion
- ~ Streams
- ~ Canal Ditch



1:26,000



Aerial Photos: 2021 NAIP

* The diversions shown on this map are based on available data.
The mapped diversions may not be correct.

Beaverhead River Diversion Sites

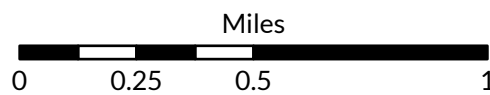
Beaverhead River (Basin Name) - Basin 41B



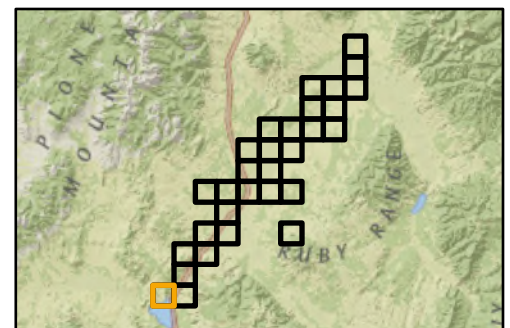
The Montana Department of
**Natural Resources
& Conservation**



- ☒ Points of Diversion
- ~ Streams
- ~ Canal Ditch



1:26,000



Aerial Photos: 2021 NAIP

* The diversions shown on this map are based on available data.
The mapped diversions may not be correct.

Beaverhead River Diversion Sites

Beaverhead River (Basin Name) - Basin 41B

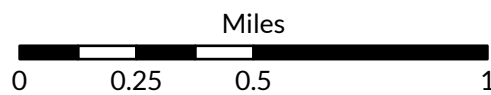


The Montana Department of
**Natural Resources
& Conservation**

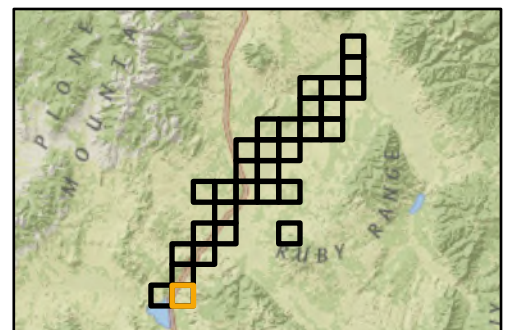
10W



- ☒ Points of Diversion
- ~ Streams
- ~ Canal Ditch



1:26,000



Aerial Photos: 2021 NAIP

* The diversions shown on this map are based on available data.
The mapped diversions may not be correct.