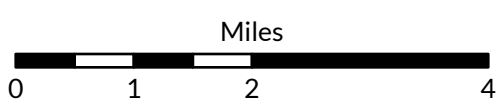
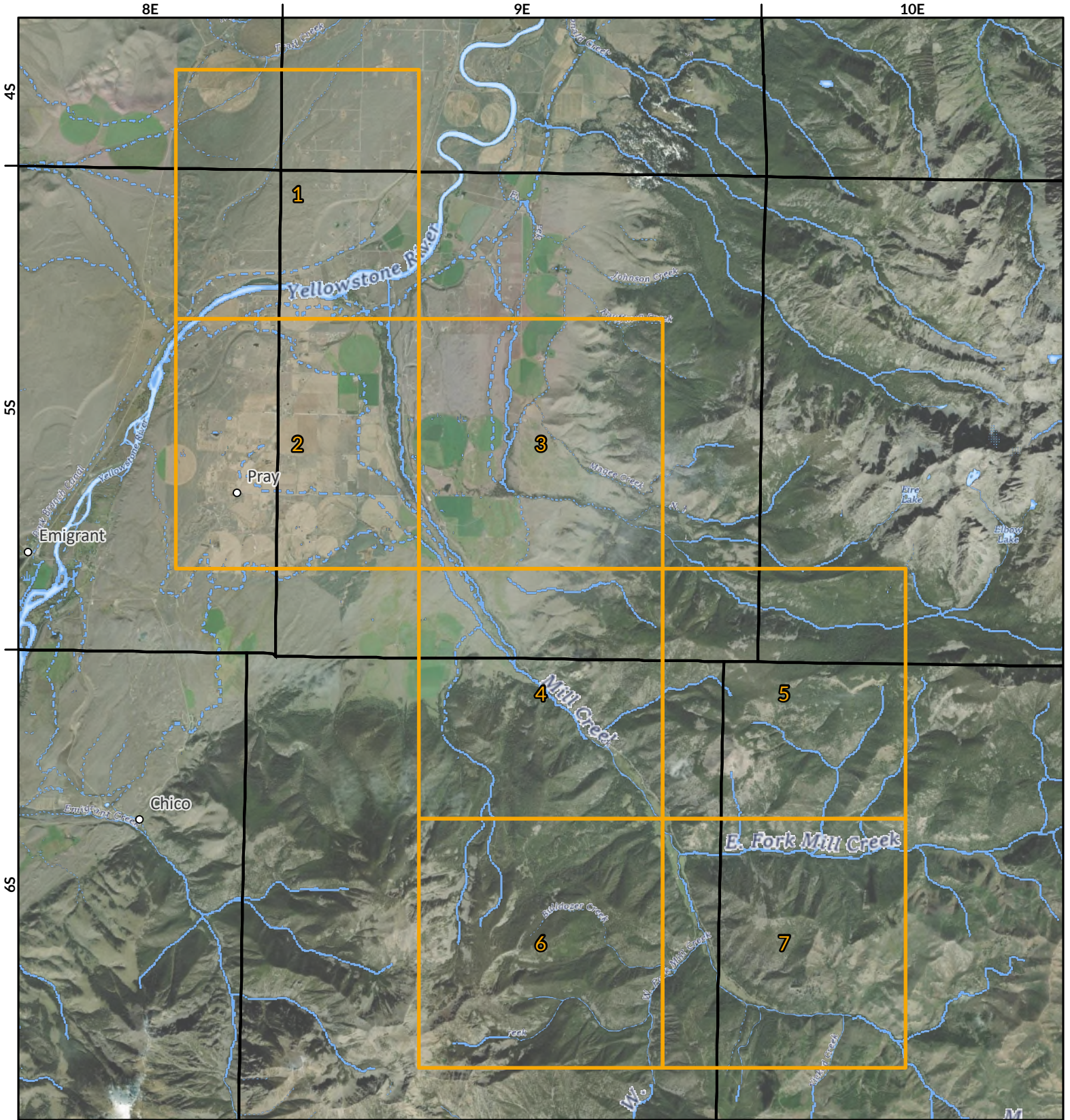


# Mill Creek Diversion Sites

Yellowstone River Above and Including Bridger Creek  
(Basin Name) - Basin 43B



The Montana Department of  
**Natural Resources  
& Conservation**




1:103,000



 Page # Index

 Township

 Interstate

 Cities and Towns

Aerial Photos: 2021 NAIP





# Mill Creek Diversion Sites

Yellowstone River Above and Including Bridger Creek  
(Basin Name) - Basin 43B



The Montana Department of  
**Natural Resources  
& Conservation**

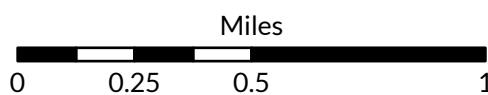
9E



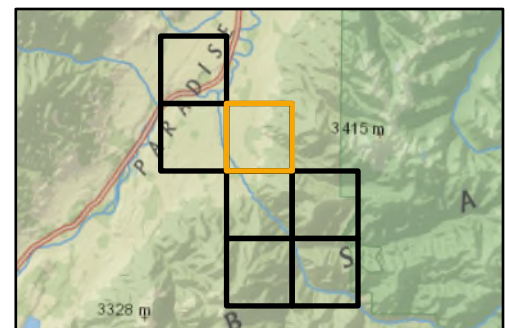
☒ Points of Diversion

~ Streams

~ Canal Ditch



1:26,000



Aerial Photos: 2021 NAIP

\* The diversions shown on this map are based on available data.  
The mapped diversions may not be correct.

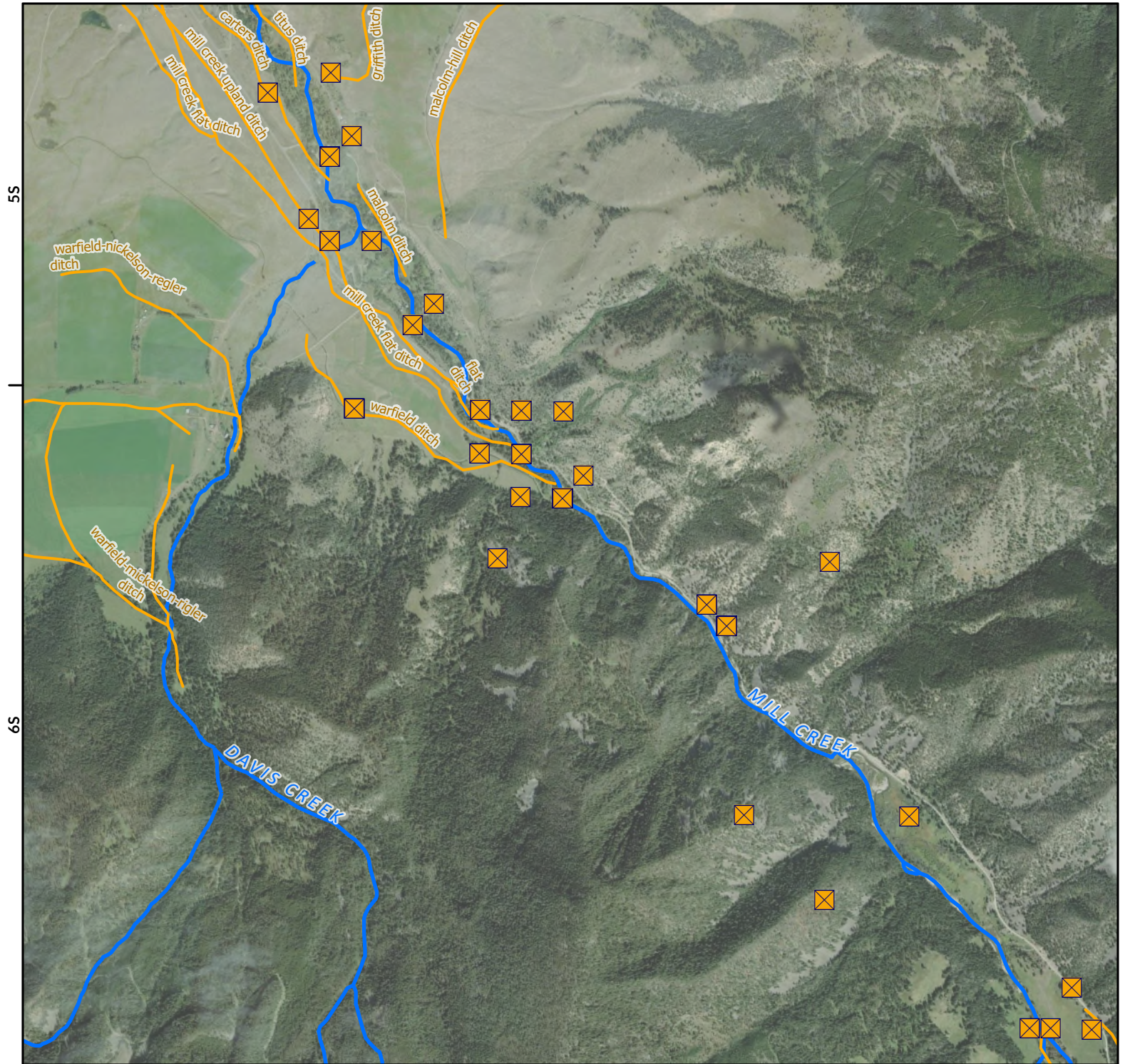
# Mill Creek Diversion Sites

Yellowstone River Above and Including Bridger Creek  
(Basin Name) - Basin 43B



The Montana Department of  
**Natural Resources  
& Conservation**

9E



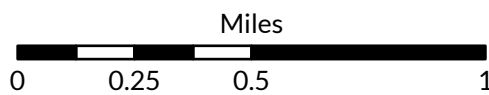
☒ Points of Diversion

~ Streams

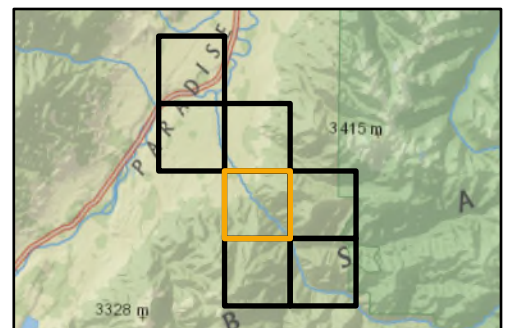
~ Canal Ditch

Aerial Photos: 2021 NAIP

\* The diversions shown on this map are based on available data.  
The mapped diversions may not be correct.



1:26,000

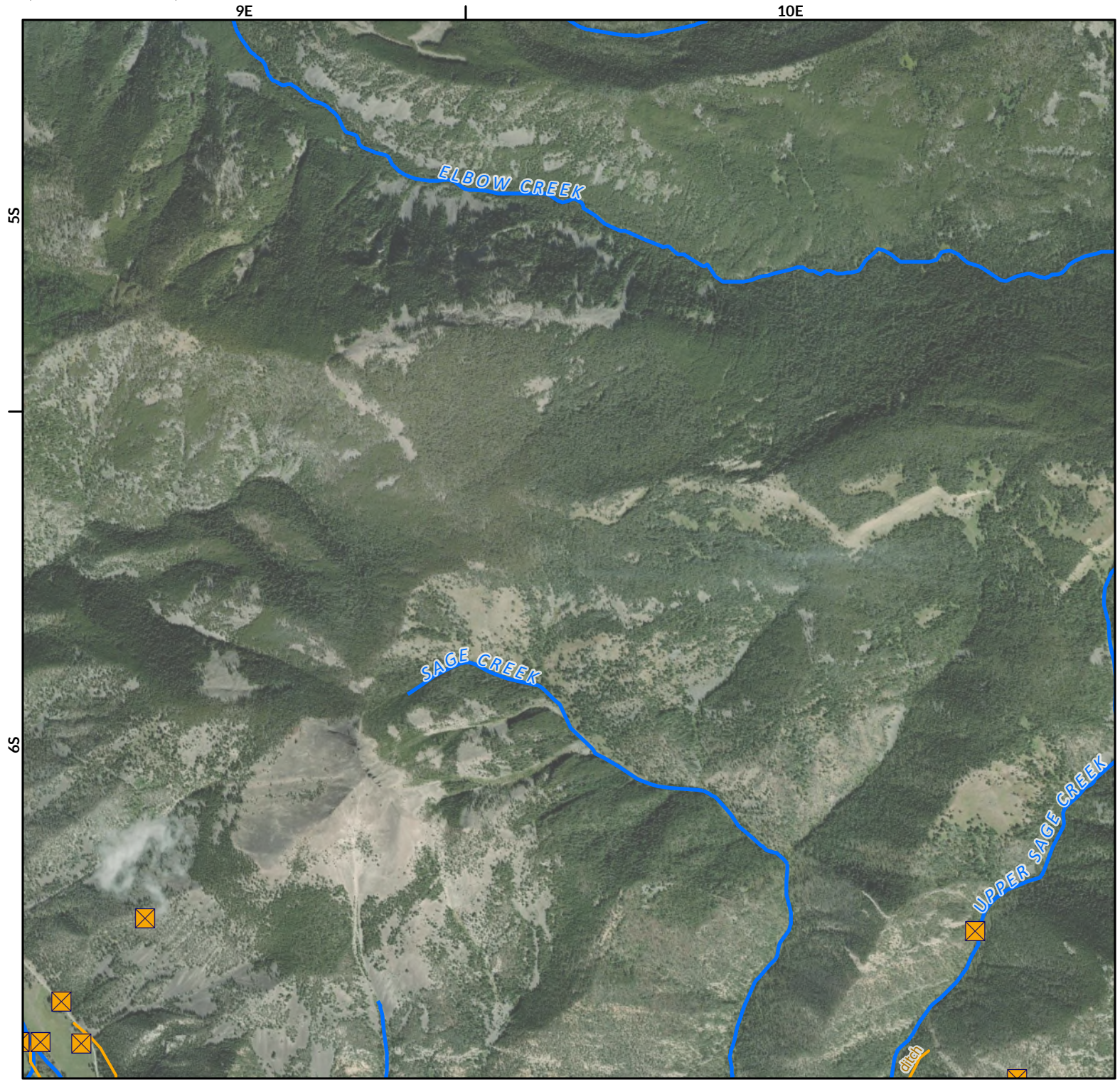


# Mill Creek Diversion Sites

Yellowstone River Above and Including Bridger Creek  
(Basin Name) - Basin 43B



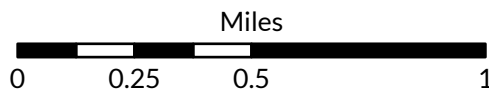
The Montana Department of  
**Natural Resources  
& Conservation**



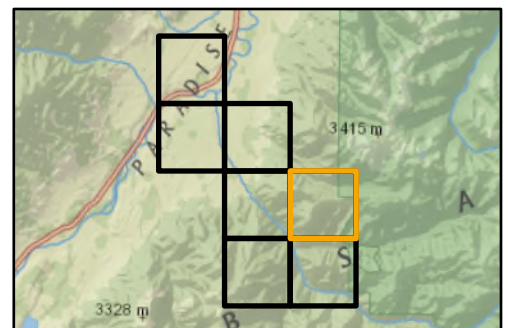
- ☒ Points of Diversion
- ~ Streams
- ~ Canal Ditch

Aerial Photos: 2021 NAIP

\* The diversions shown on this map are based on available data.  
The mapped diversions may not be correct.



1:26,000



# Mill Creek Diversion Sites

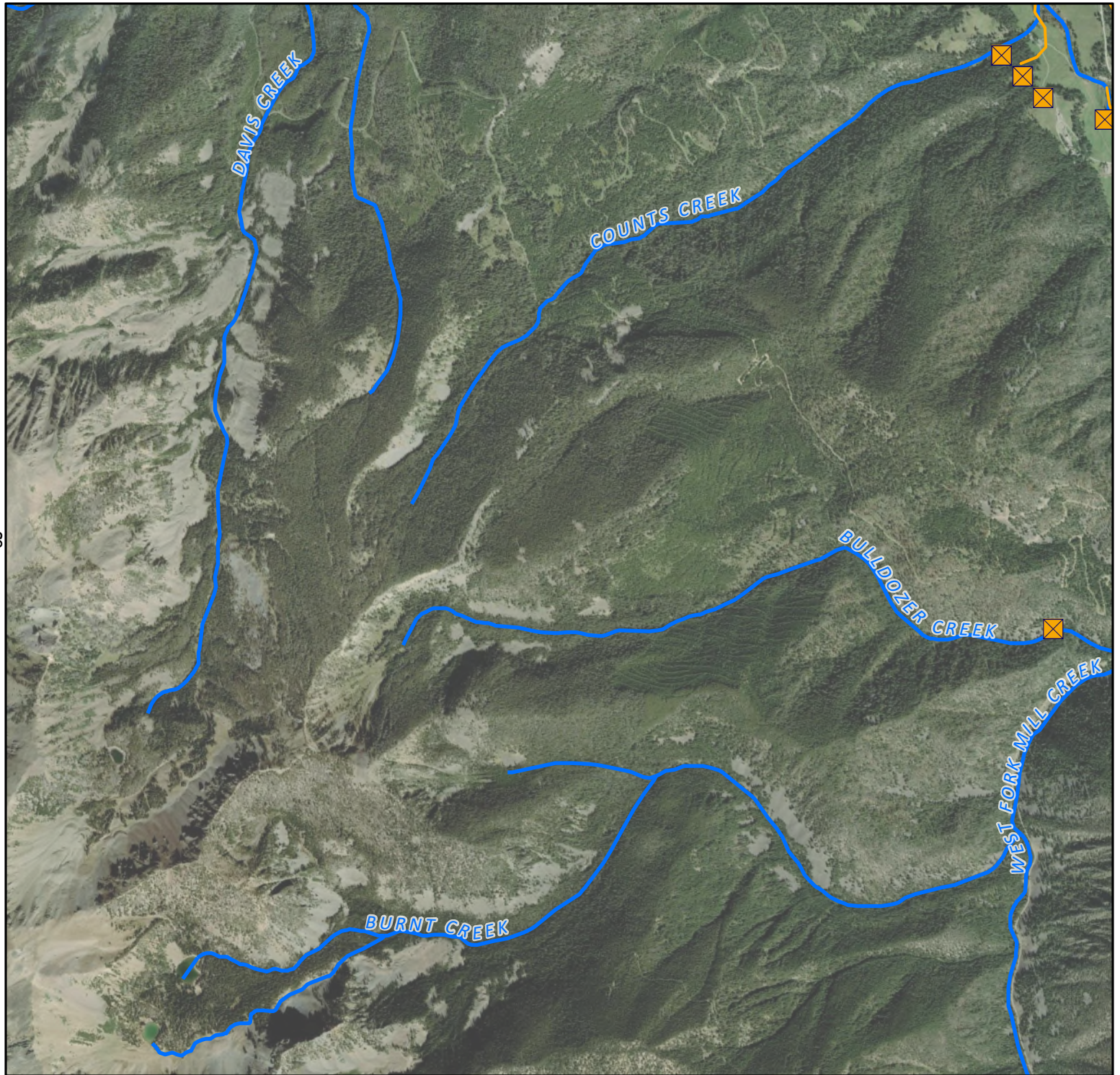
Yellowstone River Above and Including Bridger Creek  
(Basin Name) - Basin 43B



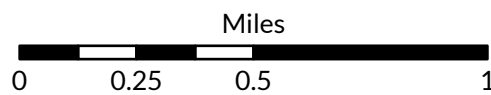
The Montana Department of  
**Natural Resources  
& Conservation**

9E

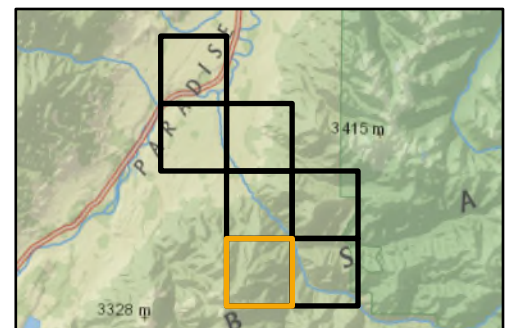
69



- ☒ Points of Diversion
- ~ Streams
- ~ Canal Ditch



1:26,000



Aerial Photos: 2021 NAIP

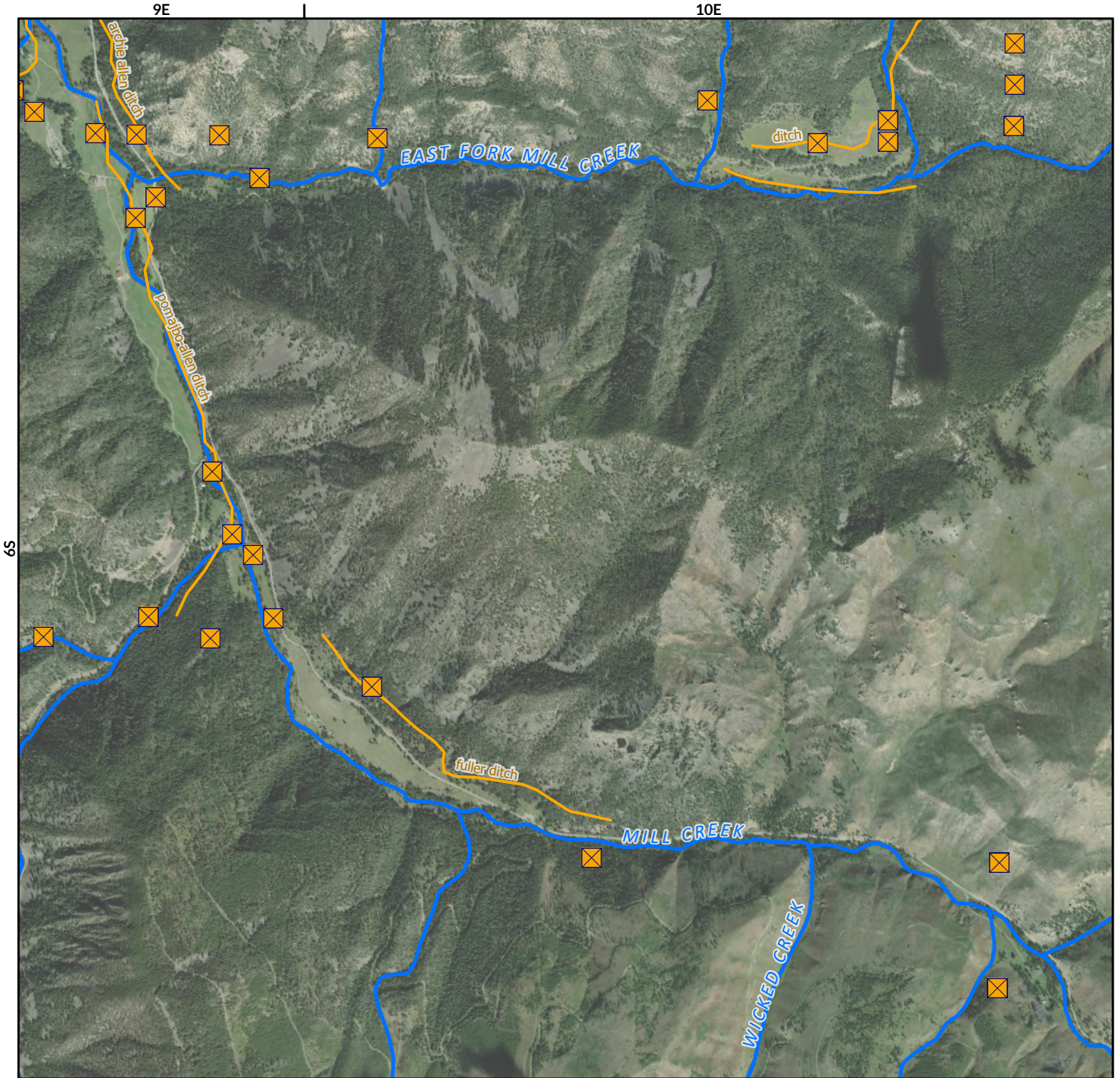
\* The diversions shown on this map are based on available data.  
The mapped diversions may not be correct.

# Mill Creek Diversion Sites

Yellowstone River Above and Including Bridger Creek  
(Basin Name) - Basin 43B



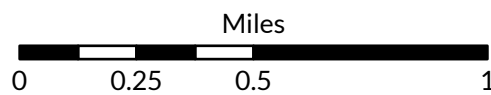
The Montana Department of  
**Natural Resources  
& Conservation**



- ☒ Points of Diversion
- ~ Streams
- ~ Canal Ditch

Aerial Photos: 2021 NAIP

\* The diversions shown on this map are based on available data.  
The mapped diversions may not be correct.



1:26,000

