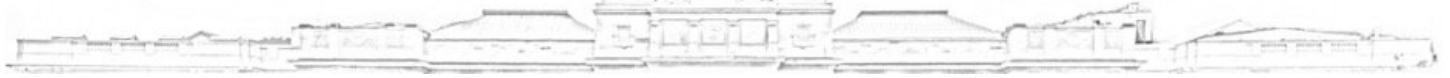




ADMINISTRATIVE RULES OF MONTANA



36.14.406 OPERATION PLAN - EMERGENCY PROCEDURES AND WARNING PLANS

- (1) All operation plans must contain emergency procedures and warning plans to be used in the event of an emergency.
- (2) The plan must be developed in cooperation with those designated by the owner for carrying out the plan in an emergency, such as county disaster emergency coordinators, county sheriff, city police, engineer, and others.
- (3) The owner shall file the plan with the appropriate disaster and emergency services coordinator.
- (4) The plan must include but not be limited to:
 - (a) a map of the evacuation area downstream of the dam based on the estimated inundation caused by a sudden breach of the dam;
 - (b) an up-to-date notification directory with phone numbers of key county or municipal and emergency management officials, an engineer familiar with the dam's characteristics, the department, and a procedure to notify downstream residents located within the inundation area;
 - (c) the current name of the owner or representative responsible for giving notification of a threat of failure;
 - (d) the general sites and availability of materials for emergency repairs such as filling erosion gullies and controlling seepage; and
 - (e) a list of contractors and others that could provide assistance before, during, and after a dam failure or reference that the county resource book for disaster and emergency services has been examined and contains the necessary contractors and others.
- (5) The owner shall annually review and update the emergency procedures and warning plan.

Authorizing statute(s): 85-15-110, MCA

Implementing statute(s): 85-15-212, MCA

History: NEW, 1988 MAR p. 2489, Eff. 11/24/88; AMD, 2022 MAR p. 1849, Eff. 9/24/22.