



SCOPE

Attn: Kelly Connect - Flathead Reservation Water Management Board
400 SW Main Street, Ronan, MT 59864

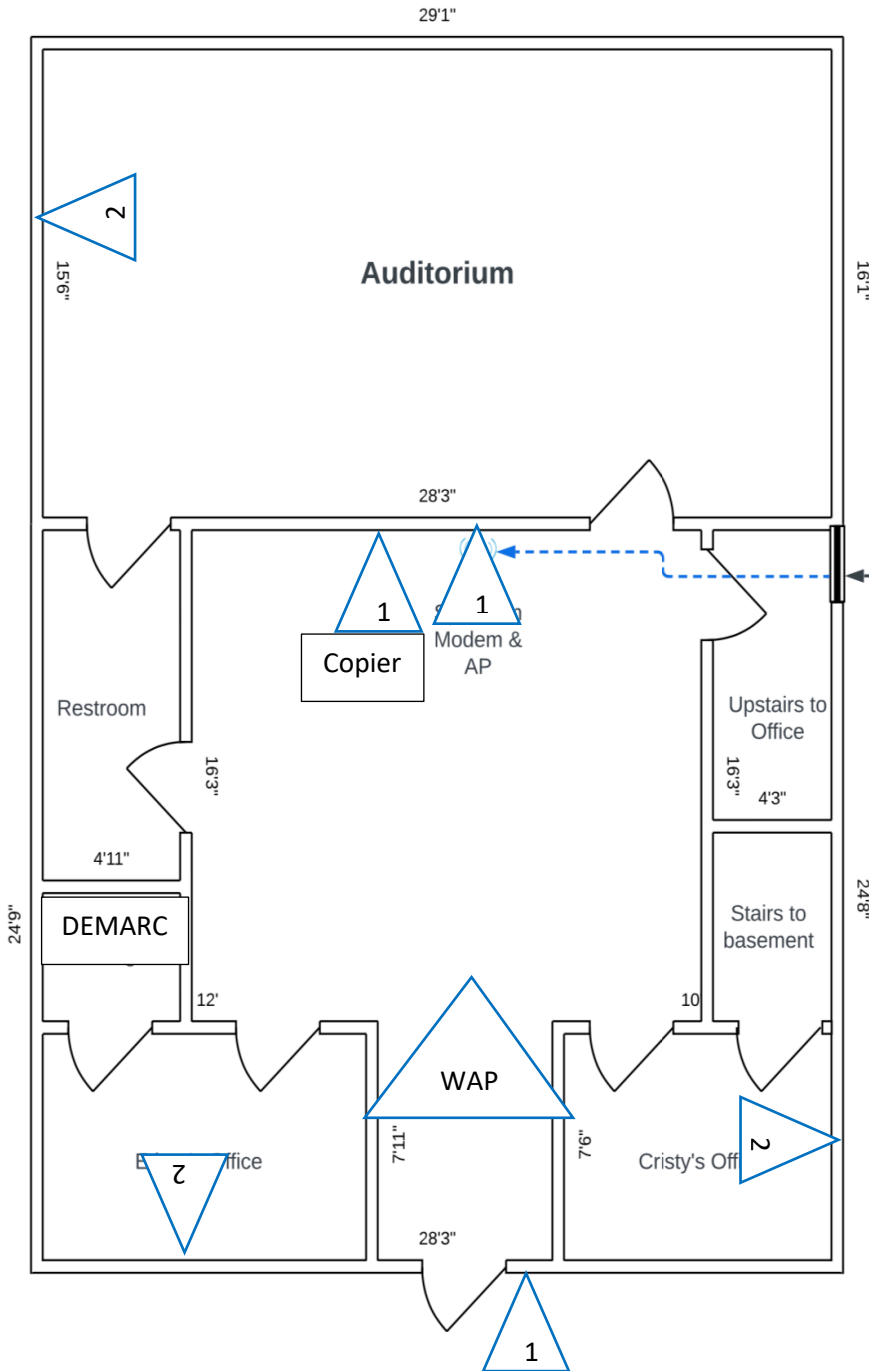
11/3/2022

Cabling Scope of Work:

- (13) Total Cat 6 cable runs throughout the building
 - (2) drops in front East office (Approx. 15Ft)
 - (2) drops in front West office (Approx. 35Ft)
 - (2) drops in auditorium on East Wall (Approx. 35Ft)
 - (1) drop for the copier (Approx. 25Ft)
 - (1) access point in the common area (Approx. 25Ft)
 - (1) access point in the auditorium (Approx. 25Ft)
 - (1) access point upstairs (Approx. 40Ft)
 - (2) drops upstairs (Approx. 30Ft & 40Ft)
 - (1) front door security camera (Approx. 35Ft)
- Provide & (1) install wall mounted 9U rack
- (1) patch panel
- Race way

Exclusions:

- Any additional hardware



Spectrum feed comes in thru a vent to the basement. It then goes across and up thru the floor to the modem

The first floor could be cabled by utilizing the basement. The patch panel could be placed in the storage closet in Ethan's office. There is a 4' crawl space above the ceiling to route cable to the upstairs and for AP's

