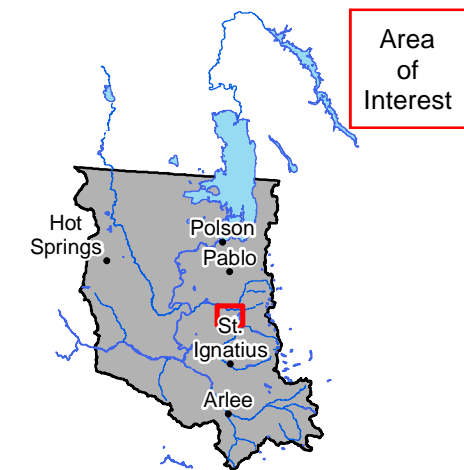


Place of Use
MFWP Wetlands

76L
30052922

Exhibit 1



Flathead Indian Reservation

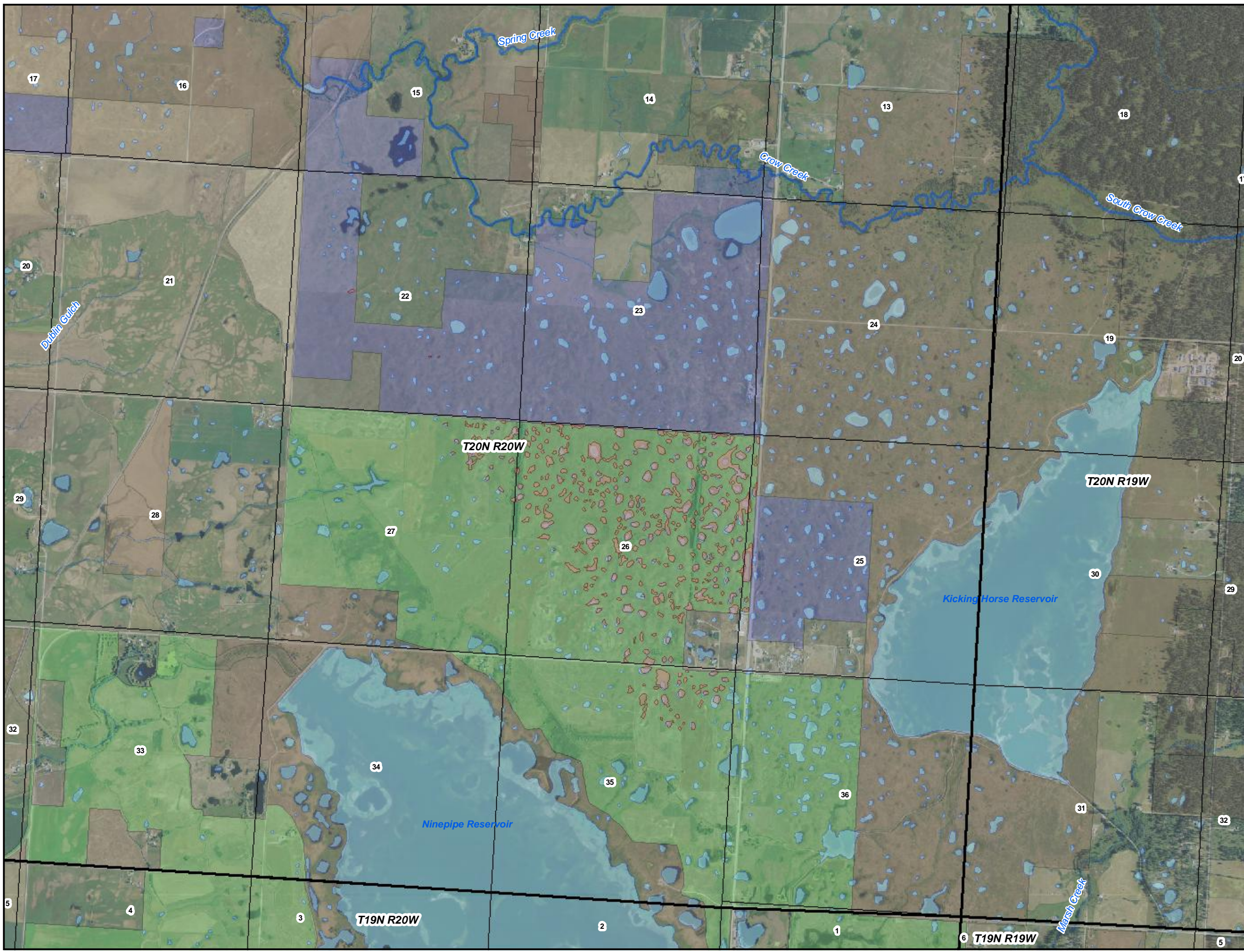
Legend

- Places of Use
- Reservation Boundary
- Land Owner**
- Tribal
- Federal
- State

0 0.25 0.5 Miles



POU/POD Data Source: CSKT-MT Compact Wetlands
 MTFWP WMA (available at nris.mt.gov)
 Imagery Source: "Montana 2009 Color NAIP Orthophotos,
 12-Kilometer Tiles" courtesy of USDA-Farm Services Agency,
 Aerial Photography Field Office and the Montana State Library.
 Hillshade created from: "National Elevation Dataset" courtesy of
 U.S. Geological Survey (USGS), EROS Data Center
 (1-arc second)



Place of Use
MFWP Wetlands

76LJ
30052924

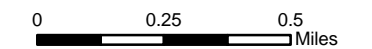
Exhibit 1



Flathead Indian Reservation

Legend

- Places of Use
- Reservation Boundary
- Land Owner**
- Tribal
- Federal
- State



POU/POD Data Source: CSKT-MT Compact Wetlands
 MTFWP WMA (available at nris.mt.gov)
 Imagery Source: "Montana 2009 Color NAIP Orthophotos,
 12-Kilometer Tiles" courtesy of USDA-Farm Services Agency,
 Aerial Photography Field Office and the Montana State Library.
 Hillshade created from: "National Elevation Dataset" courtesy of
 U.S. Geological Survey (USGS), EROS Data Center
 (1-arc second)



Place of Use
MFWP Wetlands

76L
30052925

Exhibit 1

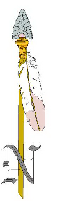


Flathead Indian Reservation

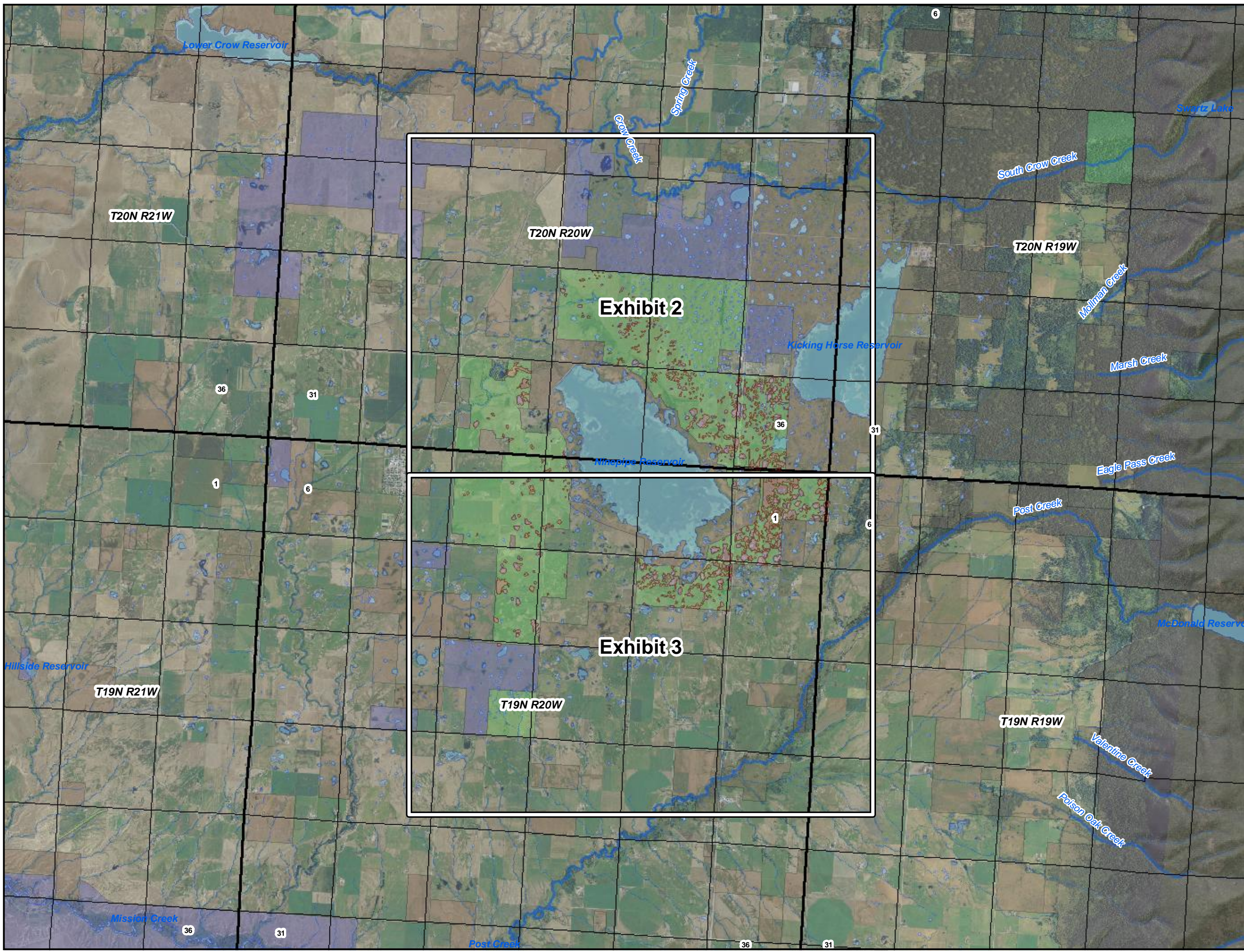
Legend

- Places of Use
- Reservation Boundary
- Land Owner**
- Tribal
- Federal
- State

0 0.5 1 Miles



POU/POD Data Source: CSKT-MT Compact Wetlands
USFWS WMA (available at nris.mt.gov)
Imagery Source: "Montana 2009 Color NAIP Orthophotos, 12-Kilometer Tiles" courtesy of USDA-Farm Services Agency, Aerial Photography Field Office and the Montana State Library.
Hillshade created from: "National Elevation Dataset" courtesy of U.S. Geological Survey (USGS), EROS Data Center (1-arc second)



Place of Use
MFWP Wetlands

76L
30052925

Exhibit 2

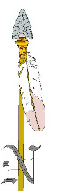


Flathead Indian Reservation

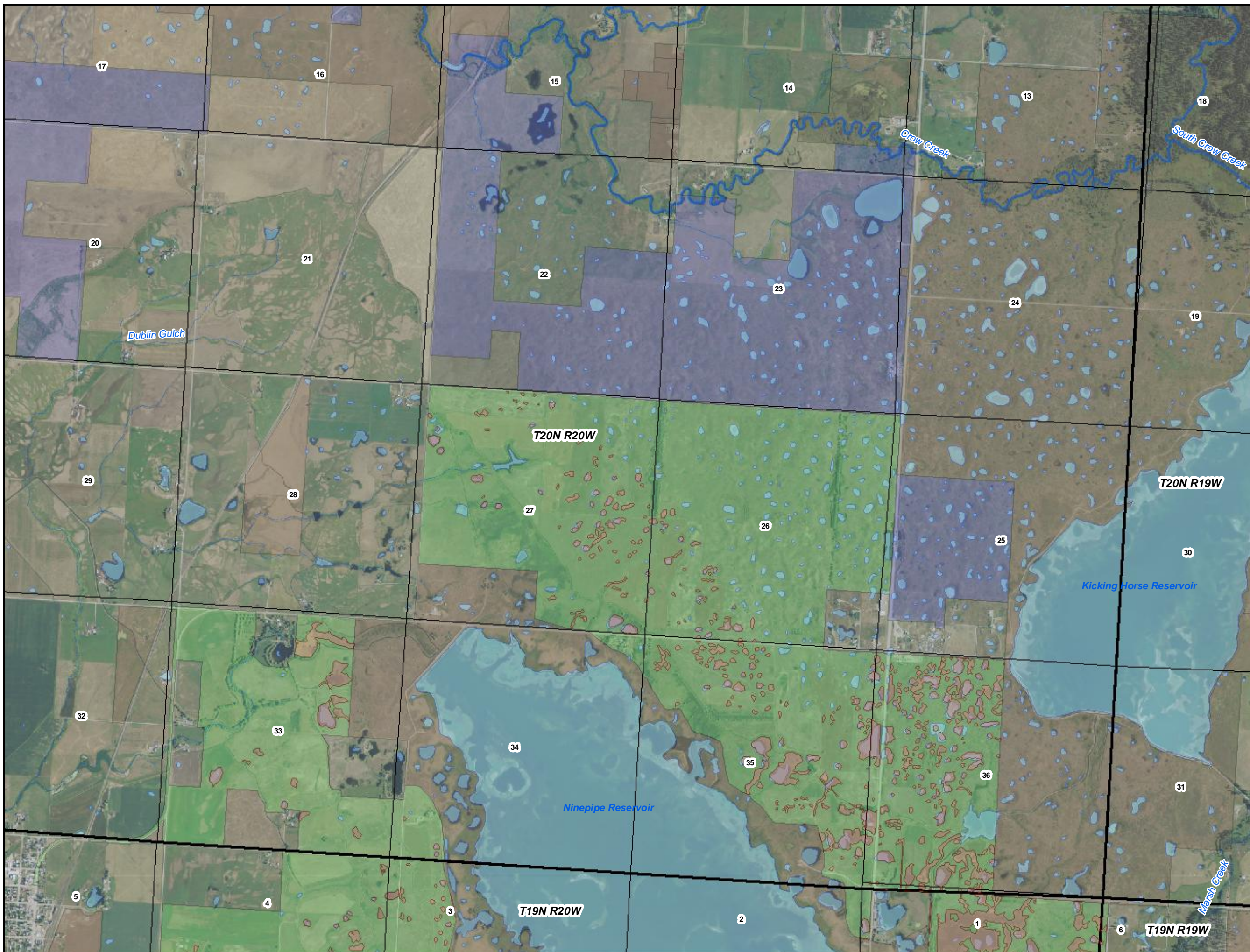
Legend

- Places of Use
- Reservation Boundary
- Land Owner**
- Tribal
- Federal
- State

0 0.25 0.5
Miles



POU/POD Data Source: CSKT-MT Compact Wetlands
USFWS WMA (available at nris.mt.gov)
Imagery Source: "Montana 2009 Color NAIP Orthophotos,
12-Kilometer Tiles" courtesy of USDA-Farm Services Agency,
Aerial Photography Field Office and the Montana State Library.
Hillshade created from: "National Elevation Dataset" courtesy of
U.S. Geological Survey (USGS), EROS Data Center
(1-arc second)



Place of Use
MFWP Wetlands

76L
30052925

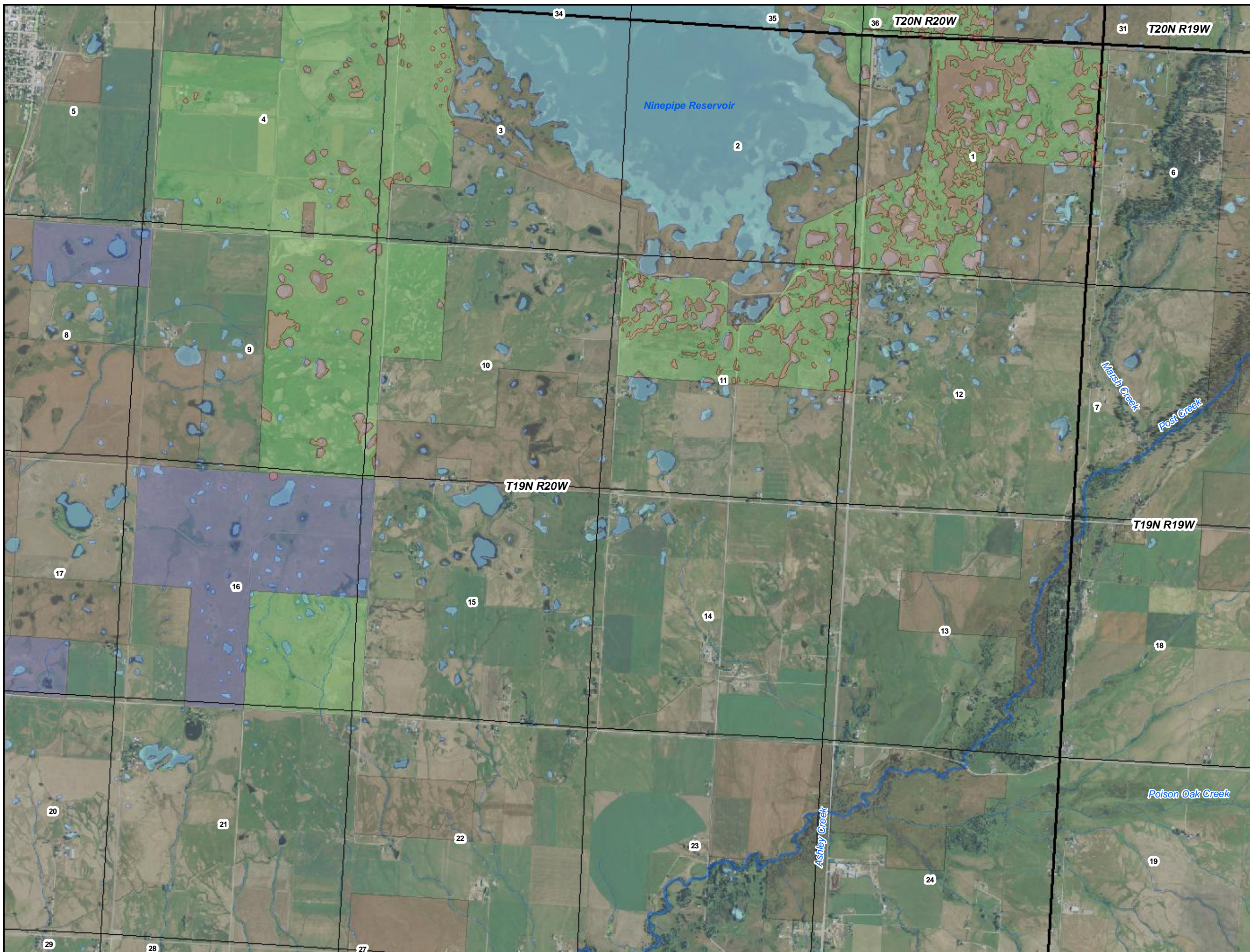
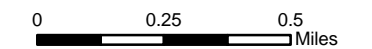
Exhibit 3



Flathead Indian Reservation

Legend

- Places of Use
- Reservation Boundary
- Land Owner**
- Tribal
- Federal
- State



POU/POD Data Source: CSKT-MT Compact Wetlands
USFWS WMA (available at nris.mt.gov)
Imagery Source: "Montana 2009 Color NAIP Orthophotos,
12-Kilometer Tiles" courtesy of USDA-Farm Services Agency,
Aerial Photography Field Office and the Montana State Library.
Hillshade created from: "National Elevation Dataset" courtesy of
U.S. Geological Survey (USGS), EROS Data Center
(1-arc second)