

NOTICE OF SALE

GOOD NEIGHBOR AUTHORITY

Department of Natural Resources & Conservation Timber Sale

The GNA Buckhorn Timber Sale is located within Sections 13, 14, 15, 21, 22, 23, 24, and 28 of T5N – R19W on the Bitterroot National Forest. Approximately 24,358 tons, consisting of mixed conifer sawlogs, are offered for sale.

Sealed bids will be opened at the Department of Natural Resources & Conservation, 2705 Spurgin Road, Missoula, Montana on **July 28th, 2020 at 2:00 pm**. Bids may be hand delivered or mailed and will be accepted any time prior to the bid opening. **DNRC recommends that bidders contact the Forestry Division (406-542-4300) prior to the bid opening to ensure that your bid has been received.** Bids must be accompanied by a deposit of **\$6,791.00**, which can be in the form of a cashier's check, certified check, bank money order or bank draft to be applied to the first sale invoice for the successful bidder. Bid bonds will be accepted and, for the successful bidder, will be closed upon execution of the Timber Sale Contract and Timber Sale Bond.

The sale will be awarded to the highest responsible bidder. If the successful bidder is unable to execute the contract within **30** calendar days from the date the sale is awarded, the bid deposit will be retained by the Department as liquidated damages. The right is reserved to reject any or all bids.

Prospective bidders can obtain the sale prospectus, sale contract and bid forms from the Department of Natural Resources & Conservation, Forestry Division, in Missoula (406-542-4300) and the Hamilton Unit Office (406-363-1585).

Visit our website at <http://dnrc.mt.gov/divisions/forestry/forestry-assistance/good-neighbor-authority-current-timber-sales> for upcoming sales and bid results.

TIMBER SALE PROSPECTUS
STATE OF MONTANA DEPARTMENT OF NATURAL RESOURCES AND CONSERVATION

| | | | |
|---|--------------|-------------------|--------------------------|
| Timber Sale Name: GNA Buckhorn | | | |
| For specific sale information, contact: | | | |
| Phone | 406-542-5877 | Nate Arno | Southwestern Land Office |
| For copies of the Timber Sale Contract and bid forms, contact: | | | |
| Phone | 406-542-4300 | Forestry Division | DNRC Missoula Office |
| Phone | 406-542-4377 | Southwestern | Land Office |

General Bidding Information

1. Bids must be submitted on Department of Natural Resources & Conservation (State) bid forms.
2. Timber will be sold to the highest responsible bidder; however, the State reserves the right to reject any or all bids.
3. The State recommends that bidders contact the Forestry Assistance Bureau, Forestry Division (406-542-4300) prior to the bid opening to ensure that your bid has been received.
4. A **Bid Deposit** must accompany all bids and must be in the form of cash, cashiers check, certified check, money order, bank draft, surety bond or irrevocable letter of credit.
5. The Purchaser must submit a **Performance Bond** to the State within 30 days of notification of sale award. The bond amount will be, at a minimum, 20% of the total bid value of the sale. The performance bond may be cash, irrevocable letter of credit, surety bond or certificate of deposit. The performance bond must be maintained separately from other payments for the duration of the Timber Sale Contract. See the Timber Sale Contract for additional information.
6. The purchaser must submit an **Advance Stumpage Payment** prior to cutting any timber. The amount of the advance stumpage payment will cover six weeks of harvesting and be based on the expected harvest rate and the bid value of the stumpage. The advance stumpage payment may be cash, irrevocable letter of credit, payment bond or certificate of deposit.
7. This sale is being sold based on the gross weight of all species. Minimum price and bid price are on a per ton basis. Unless otherwise specified, the price applies to all species, green and dead. Price may vary by product. Billing will be based on gross weight. A weight ticket from a certified scale is required for each load hauled, regardless of product type.
8. The State has estimated the net scale merchantable sawlog volume to be sold under this Contract. Other products may be part of this sale. All delivered wood will be weighed and billed at per ton bid rates. The State recognizes that a percentage of delivered wood may not meet the log manufacturing and recovery standards of the Timber Sale Contract. The actual percentage will vary based on the log manufacturing and recovery specifications of the purchaser and tree conditions in the sale area. The actual delivered weight may vary, resulting in an overrun or under-run of the estimated tonnage. The State strongly recommends that bidders evaluate these effects before bidding.
9. The State does not conduct detailed road appraisals. All appraised costs are gross estimates or averages, provided only to show the relative amount of work required, and not the true market value. The State strongly recommends that bidders make their own estimates based on Contract requirements. Cost estimates provided are not guaranteed.
10. Bidders are encouraged to examine the complete Timber Sale Package and Sale Area prior to bidding. Additional information is available at the phone numbers shown above.
11. Estimates for sale volume, species percents, defect, product class, etc. provided in this prospectus and volume estimates listed in the Timber Sale Contract are not guaranteed.
12. This prospectus is provided for information purposes only. If the prospectus is in error or contradicts the Timber Sale Contract, the Contract governs.

Additional Sale Information:

1. This timber sale is a State of Montana Timber Sale on Forest Service Land and is being performed under the Good Neighbor Authority. Potential Purchasers should be aware that this is a partnership, between the Montana DNRC and the US Forest Service, to increase the pace and Scale of forest restoration on National Forest System Lands. Considering this is one of the first Good Neighbor Timber Sales in Montana, Good Neighbor Authority is a high priority of both agencies, and it has a high degree of public interest, the purchaser should expect increased DNRC, Forest Service, and public attention on this timber sale. The DNRC and Forest Service may wish to have public or media tours of this timber sale and we will encourage active involvement by the timber sale purchaser and their contractors.
2. Under the Good Neighbor Authority all NEPA mitigations and Forest Plan requirements must be adhered to. Specific mitigations to do so are written into the contract. The DNRC encourages potential purchasers to familiarize themselves with these mitigations prior to bidding.
3. See contract for specifications regarding the application of borax to pine stumps.
4. USFS will provide grass seed. Contractor is responsible for purchasing organic fertilizer. Contractor is responsible for applying grass seed and fertilizer as specified in contract.
5. See attachment F for tree marking information.
6. Purchaser may elect to remove non-sawlog material at the rate of \$1.00/ton.
7. Harvest units are accessed via Skalkaho Hwy and FS Rd. 714.
8. Units 1,2,6,8,10,15 are a combination of tractor/skyline/excaline/cable/shovel log/forwarder. See unit maps in Attachment A and contact Nate Arno, with any questions.
9. Ground based skidding will be restricted to slopes of 35% or less, with short runs up to, but not exceeding 40% as directed by the forest officer. Feller-bunchers may operate on slopes up to 60% as directed by the forest officer.
10. DNRC and BNF will conduct botany and heritage surveys Spring 2020 and spring of 2021. These surveys may result in additional exclusion areas. Contact Nate Arno for more information.
11. There are **two separate prices for sawlogs**. This will require two sawlog sorts at the landing as well as separate truck tickets when hauling. Douglas- fir and Lodgepole Pine Sawlogs are one sort/bid rate. Ponderosa Pine, Engelman Spruce, and Subalpine Fir are being sold at the fixed rate of \$3.00/ton.
12. **Units 1,6,10b,10e, and 16 are designated optional units. the purchaser may elect to harvest portions or all of the unit as approved by the forest officer.** Mandatory and optional volumes outlined in contract table 1 were determined by species percentage on the total sale acreage, not at the individual harvest unit level. The timber sale appraisal and information sheet are reflective of the total volume available on the timber sale.
13. Units 3,11,14, and 15 will have 3-5 acre areas that will be sample leave tree marked (LTM) in orange prior to harvest. See Attachment A unit sale maps for locations of sample marking.

Timber Sale Information Sheet
Montana Department of Natural Resources and Conservation

| Buckhorn GNA | | | | | | | | | | | |
|--|--|-------|----|------|------|----|----|------|----|------|---------------|
| Timber Sale Cruise Data (Scribner 5.6" top DIB, Filter: All All Cut) | | | | | | | | | | | |
| SPECIES | PP | DF | WL | LP | ES | GF | RC | AF | WP | Dead | TOTAL or AVE |
| Minimum Bid per ton | | | | | | | | | | | |
| Pounds per cubic foot | 62.0 | 61.7 | | 56.0 | 57.0 | | | 55.0 | | 40.0 | |
| Estimated tons of sawlogs | 3320 | 24246 | | 3418 | 789 | | | 140 | | 2606 | 34,519 tons |
| Estimated tons of non-sawlog material | 77 | 552 | | 180 | 8 | | | 0 | | 103 | 920 tons |
| Gross MBF | 420 | 3610 | | 519 | 154 | | | 32 | | 719 | 5,453 MBF |
| % Cull and Breakage | 2.0 | 13.0 | | 7.0 | 10.0 | | | 15.0 | | 26.4 | 13.0% |
| Net MBF | 411 | 3159 | | 481 | 138 | | | 27 | | 529 | 4,744 MBF |
| Average logs per MBF | 28.6 | 27.9 | | 30.6 | 17.4 | | | 14.1 | | 36.1 | 28.8 logs/MBF |
| Average DBH | 11.0 | 11.5 | | 9.3 | 13.4 | | | 19.0 | | 10.0 | 11.0 in. |
| Average tons to cut per acre | | | | | | | | | | | 31 tons/ac |
| Average MBF to cut per acre | | | | | | | | | | | 4.2 MBF/ac |
| Total Average TPA Cut | | | | | | | | | | | 82 |
| Calculated Sampling Error: Total cruised volume will fall between | 4,286 and 5,202 Net MBF in 9 out of 10 cruises | | | | | | | | | | 9.7% |
| Tons Per Thousand Board Feet | | | | | | | | | | | |
| Conversion Factor - Estimated tons hauled per thousand Scribner board feet | 34,519 estimated tons / 4,744 Net MBF | | | | | | | | | | 7.28 tons/MBF |

| Contract Information | |
|----------------------------|------------|
| Contract Termination Date: | 11/31/2025 |
| Operating Period: | |

Timber Sale Information Sheet
Montana Department of Natural Resources and Conservation

Logging Information

| | |
|---|-------------|
| % of volume logged by clearcut or seed tree cut | 11% |
| % of volume logged with tractors | 50% |
| % of volume logged by skyline | 40% |
| % of volume logged by Excaline/Cable | 10% |
| Yarding distance tractor (average) | 500 ft. |
| Yarding distance skyline (average) | 800 ft. |
| Yarding distance Excaline/Cable | 300 ft. |
| Estimated haul distance (paved) | 120.0 miles |
| Estimated haul distance (unpaved) | 13.0 miles |

Purchaser fees and estimated costs

| | |
|--|-------------|
| Forest Improvement fee perMBF | \$0.00/MBF |
| Forest Improvement fee per ton | \$0.00/ton |
| Forest Improvement fee estimated total | \$0.00 |
| Forest Improvement fee quarterly installment | \$0.00 |
| Estimated Purchaser-do FI total \$ | \$0 |
| Estimated Purchaser-do FI per ton | \$0.00/ton |
| Estimated Purchaser-do slash disposal work total | \$46,800.00 |
| Estimated Purchaser-do slash disposal work per ton | \$1.36/ton |

**Road development and maintenance
fees and estimates**

| | |
|--|------------|
| Estimated road development cost total | \$0 |
| Estimated road development cost per ton | \$0.00/ton |
| Estimated road development cost perMBF | \$0.00/MBF |
| Estimated Purchaser-do road maintenance cost total | \$67,957 |
| Estimated Purchaser-do road maintenance cost per ton | \$1.97/ton |
| Private road maintenance charges per ton | \$0.00/ton |
| USFS road maintenance charges per ton | \$1.97/ton |
| Miles of temporary road construction | 1.2 miles |
| Miles of road reconstruction | 0.0 miles |
| Miles of road with site improvements | 0.0 miles |
| Miles of road reclamation or abandonment | 1.2 miles |
| Miles of road maintenance and blading | 23.0 miles |

Unit harvest volume

| Unit # | Acres | Est Tons | Est MBF | Harvest Deadline |
|--------|-----------|----------|---------|------------------|
| 1* | 215.91 | 5271 | 724 | |
| 2 | 51.52 | 1755 | 241 | |
| 3 | 30.50 | 778 | 107 | |
| 4 | 31.61 | 1021 | 140 | |
| 5 | 75.29 | 3527 | 485 | |
| 6* | 102.59 | 1594 | 219 | |
| 7 | 8.53 | 317 | 44 | |
| 8 | 37.51 | 1105 | 152 | |
| 9 | 14.33 | 302 | 42 | |
| 10* | 273.96 | 6723 | 923 | |
| 11 | 37.92 | 2180 | 300 | |
| 12A | 23.77 | 896 | 123 | |
| 12C | 32.02 | 1580 | 217 | |
| 13A | 9.80 | 397 | 55 | |
| 13B | 3.88 | 203 | 28 | |
| 14 | 79.50 | 3138 | 431 | |
| 15 | 30.91 | 1096 | 151 | |
| 16* | 19.73 | 725 | 100 | |
| 17 | 37.90 | 1911 | 263 | |
| Totals | 1,117 Ac. | 34,519 | 4,744 | |

* Units 1,6,10b, 10e and 16 are optional harvest units, see contract for further details

State Trust Land Vicinity Map

Hamilton Unit

BUCKHORN GNA VICINITY MAP



Project Name: **Buckhorn GNA**

Project Location: **Skalkaho Creek, Gird Point, Buckhorn Saddle**

Section: **13,14,15,21,22,23,24**

Township: **5N**

Range: **19W**

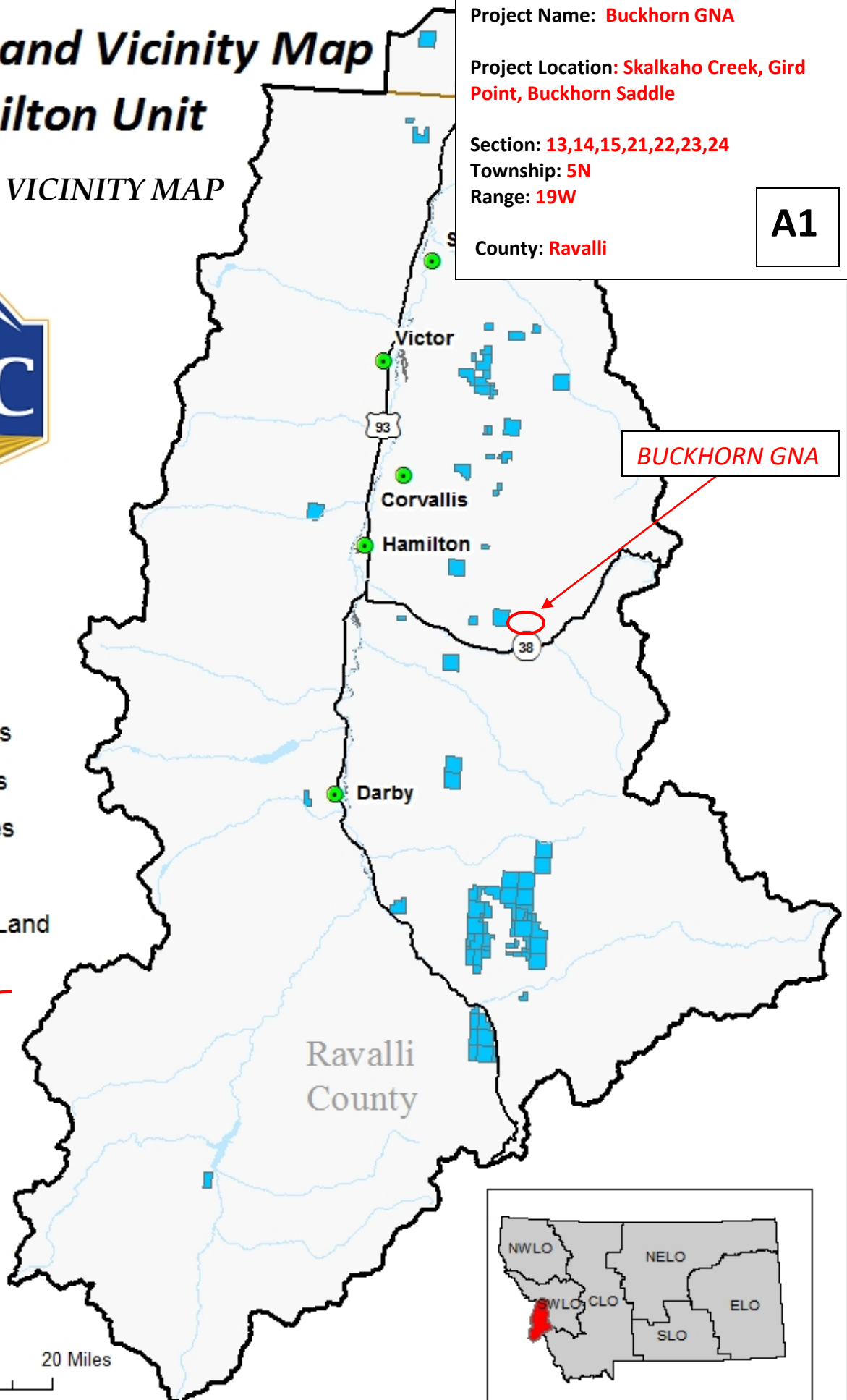
County: **Ravalli**

A1

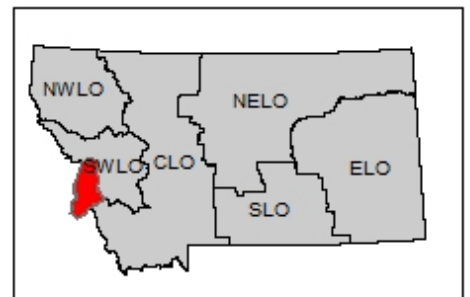
- Towns
- County Lines
- Major Roads
- Water Bodies
- Rivers
- State Trust Land

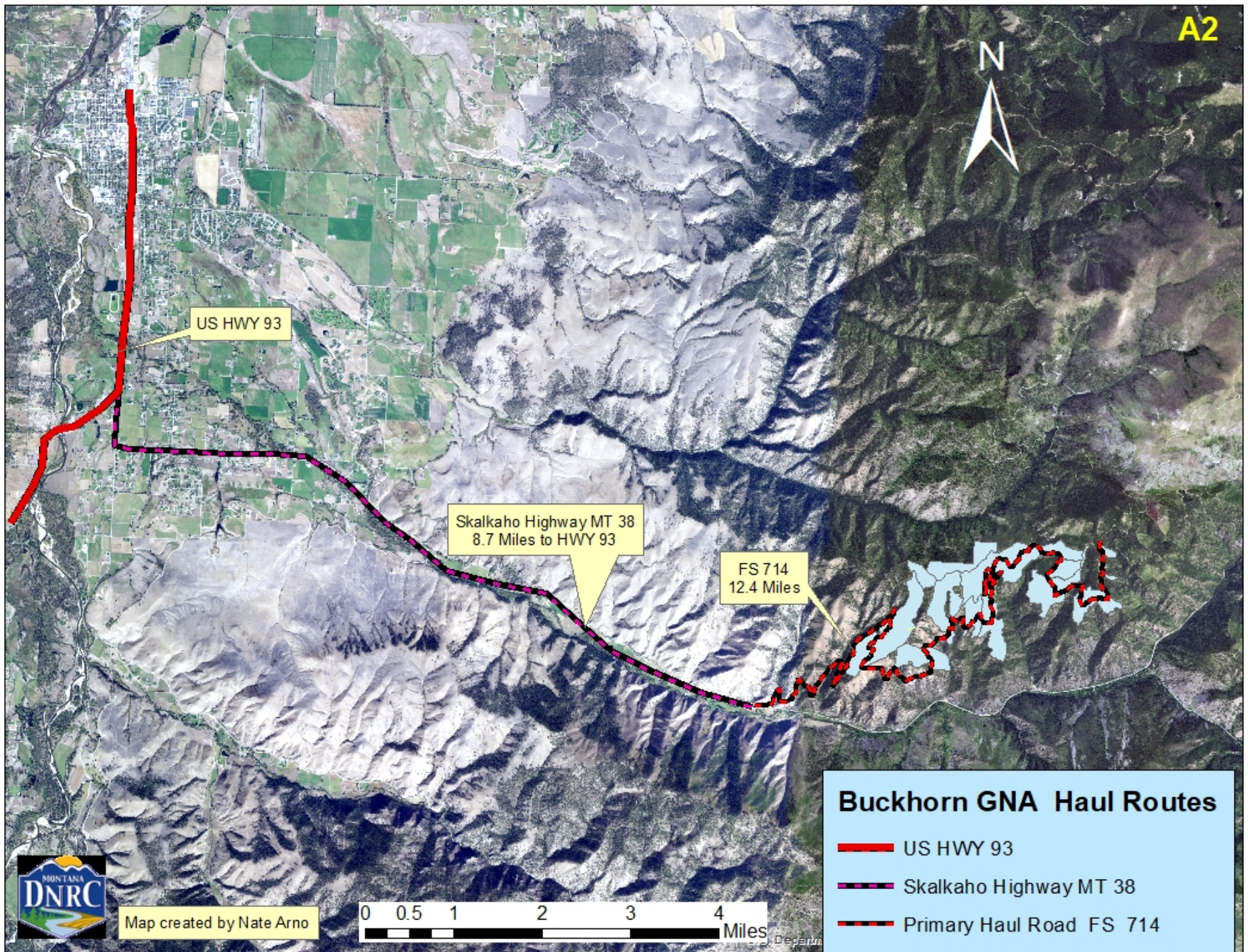


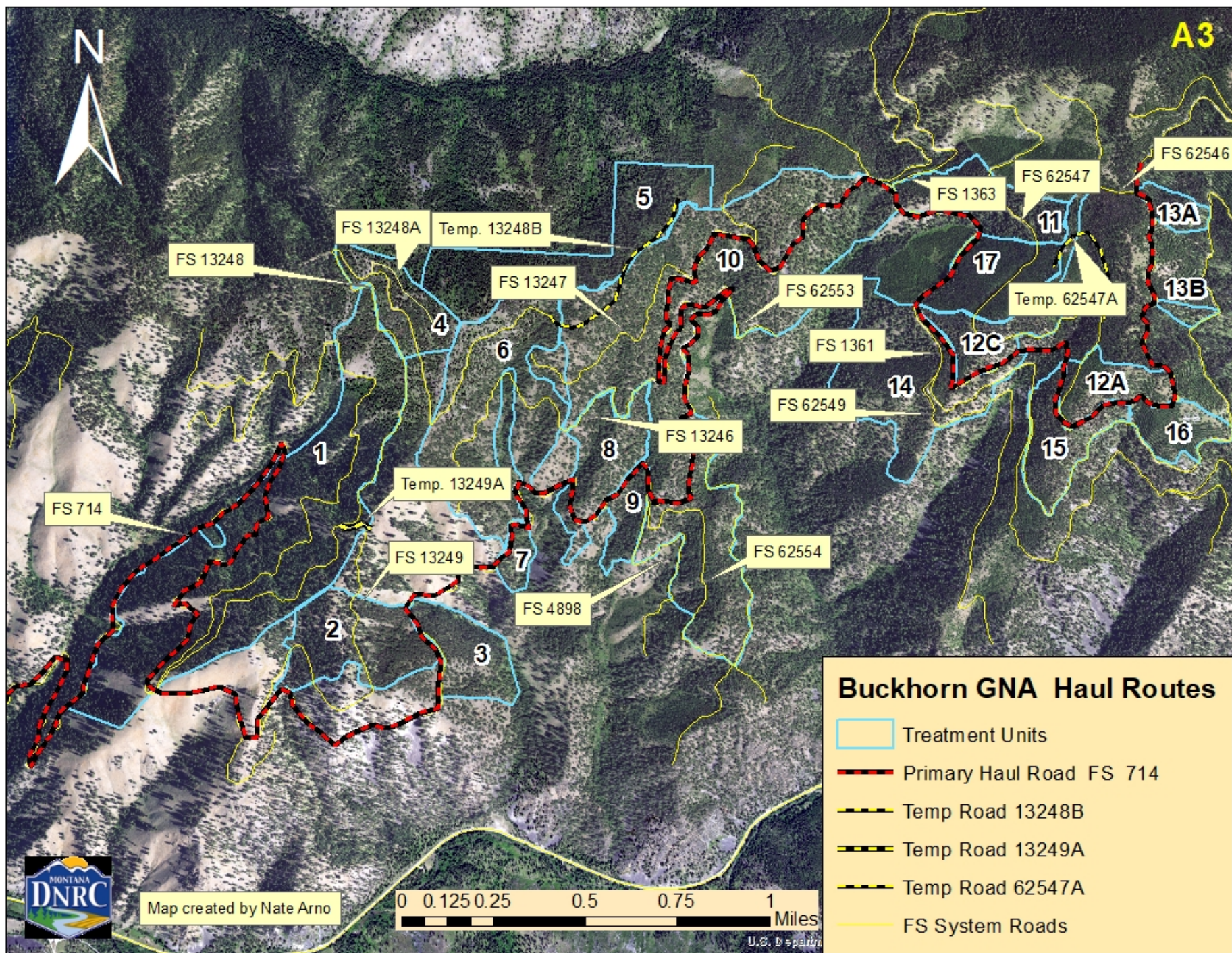
0 5 10 20 Miles

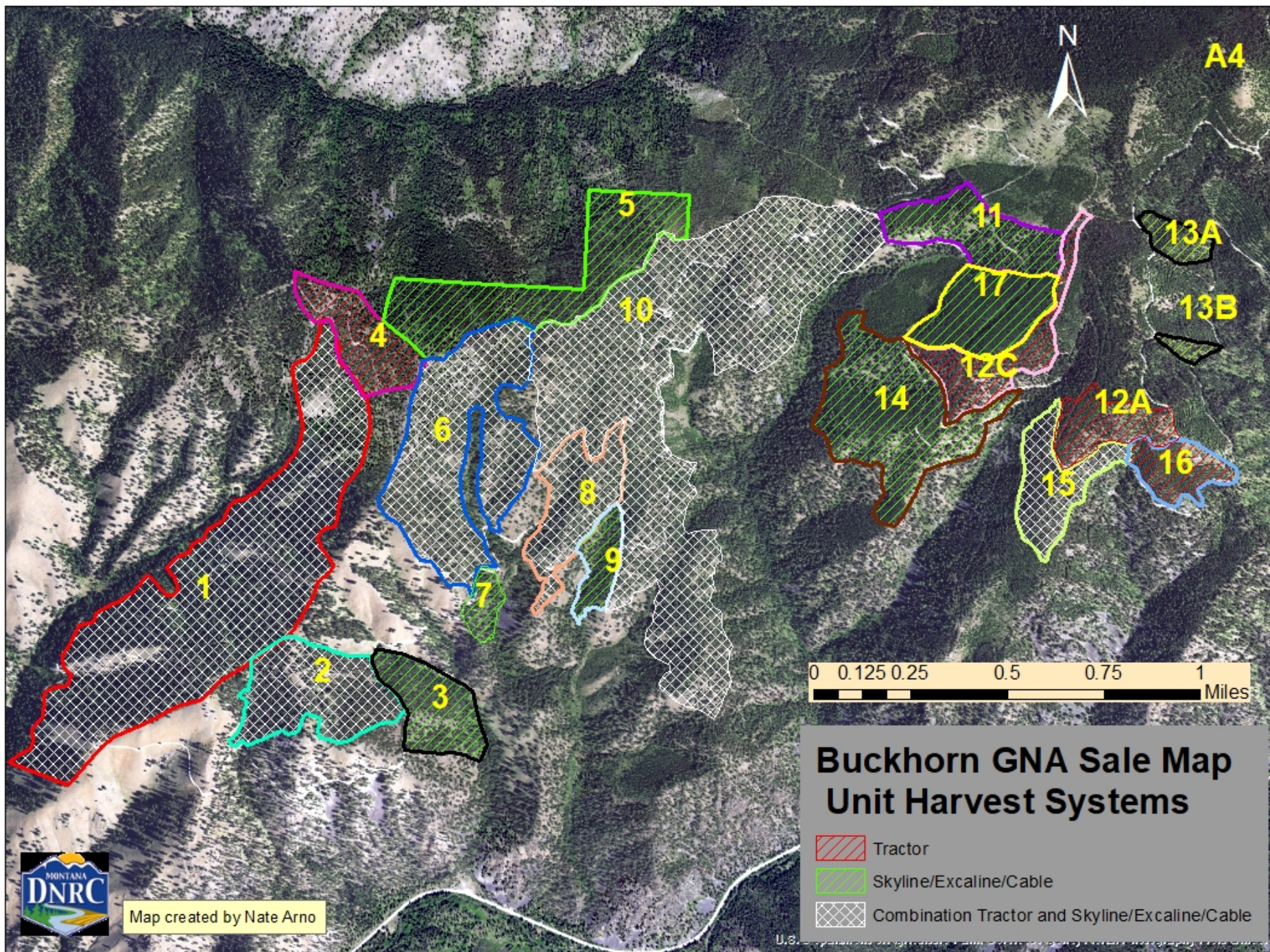


BUCKHORN GNA









Buckhorn GNA Unit 1 Sale Map

- Unit 1 DxD Tractor 102.5 Acres
- Unit 1 DxD Skyline/Excaline/Cable 104.8 Acres
- Unit 1
- Haul Road FS 714
- Haul Road FS 13248



A5







0 0.1 0.2 0.4 0.6 0.8 Miles

Map created by Nate Arno

Sources: Esri, HERE, Garmin, Intermap, increment P Corp., GEBCO, USGS, FAO, NPS, NRCAN, GeoBase, IGN, Kadaster NL, Ordnance Survey, Esri Japan, METI, Esri China (Hong Kong), (c) OpenStreetMap contributors, and the GIS User Community

Buckhorn GNA Unit 2 Sale Map

-  Unit 2 LTM Tractor 40.1 Acres
-  Unit 2 LTM Skyline/Excaline/Cable 7.8 Acres
-  Haul Road FS 714
-  Haul Road FS 13249



A6



Map created by Nate Arno

0 0.075 0.15 0.3 Miles

Sources: Esri, HERE, Garmin, Intermap, increment P Corp., GEBCO, USGS, FAO, NPS, NRCAN, GeoBase, IGN, Kadaster NL, Ordnance Survey, Esri Japan, METI, Esri China (Hong Kong), (c) OpenStreetMap contributors, and the GIS User Community





FS Road 714

A7



Buckhorn GNA Unit 3 Sale Map

 Unit_3_Sample_Marking

 Unit_3

World Imagery

Unit 3

0 410 820 1,640 Feet

Map created by Nate Arno

Sources: Esri, DigitalGlobe, GeoEye, Earthstar Geographics, CNES/Airbus DS, USDA, USGS, AeroGRID, IGN, and the GIS User Community

Buckhorn GNA Unit 6 Sale Map

| | | |
|---|-----------------------------|-------------|
|  | Unit 6 DxD Tractor | 54.7 Acres |
|  | Unit 6 DxD Skyline/Excaline | 43.02 Acres |
|  | Unit 6 RHCA Exclusion | 7.3 Acres |
|  | Haul Road FS 13248 | |
|  | Haul Road FS 13246 | |






A8

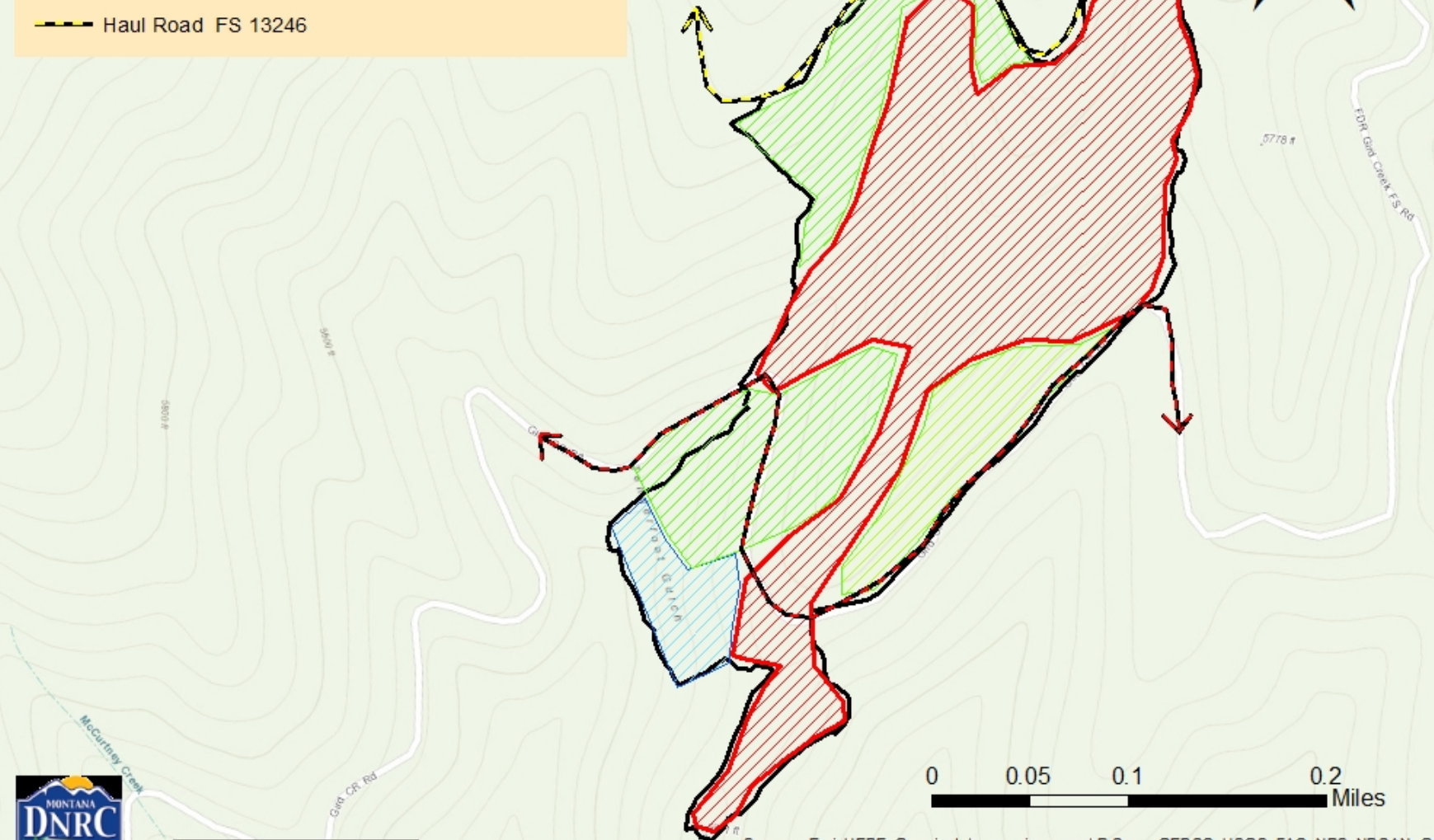
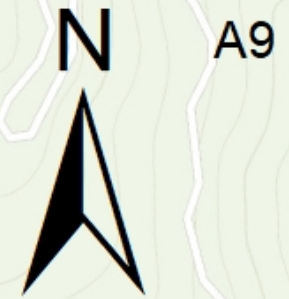


Map created by Nate Arno

Sources: Esri, HERE, Garmin, Intermap, increment P Corp., GEBCO, USGS, FAO, NPS, NRCAN, GeoBase, IGN, Kadaster NL, Ordnance Survey, Esri Japan, METI, Esri China (Hong Kong), (c) OpenStreetMap contributors, and the GIS User Community

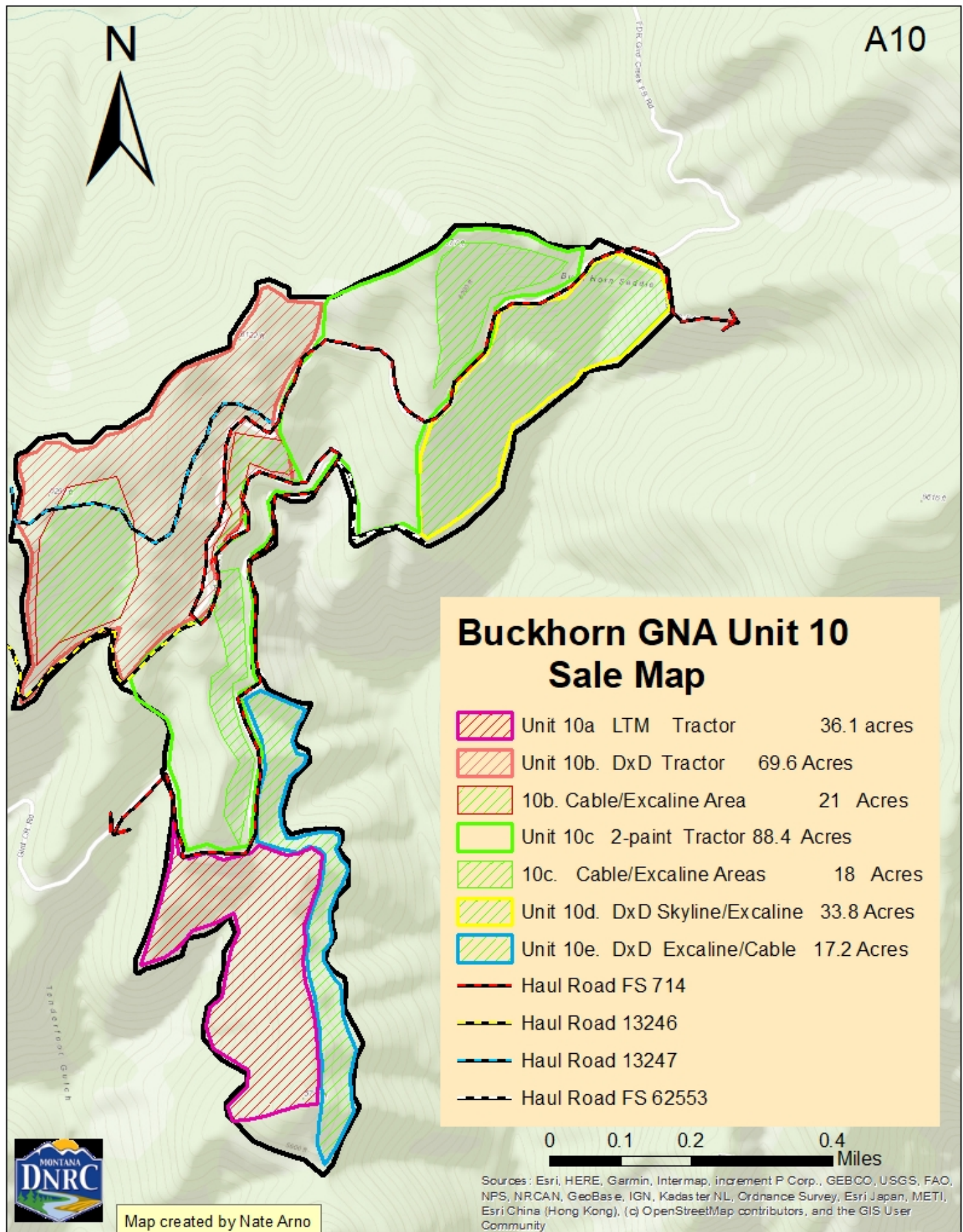
Buckhorn GNA Unit 8 Sale Map

-  Unit 8 2-Paint Tractor 22.47 Acres
-  Unit 8 Skyline/Excaline/Cable 12.6 Acres
-  Excluded Area (RHCA/Other)
-  Haul Road FS 714
-  Haul Road FS 13246





Map created by Nate Arno

Sources: Esri, HERE, Garmin, Intermap, increment P Corp., GEBCO, USGS, FAO, NPS, NRCAN, GeoBase, IGN, Kadaster NL, Ordnance Survey, Esri Japan, METI, Esri China (Hong Kong), (c) OpenStreetMap contributors, and the GIS User Community



Buckhorn GNA Unit 11 Sale Map

-  Unit_11_Sample_marking
-  Unit_11
- World Imagery

A11



FS Road 62547

FS Road 714

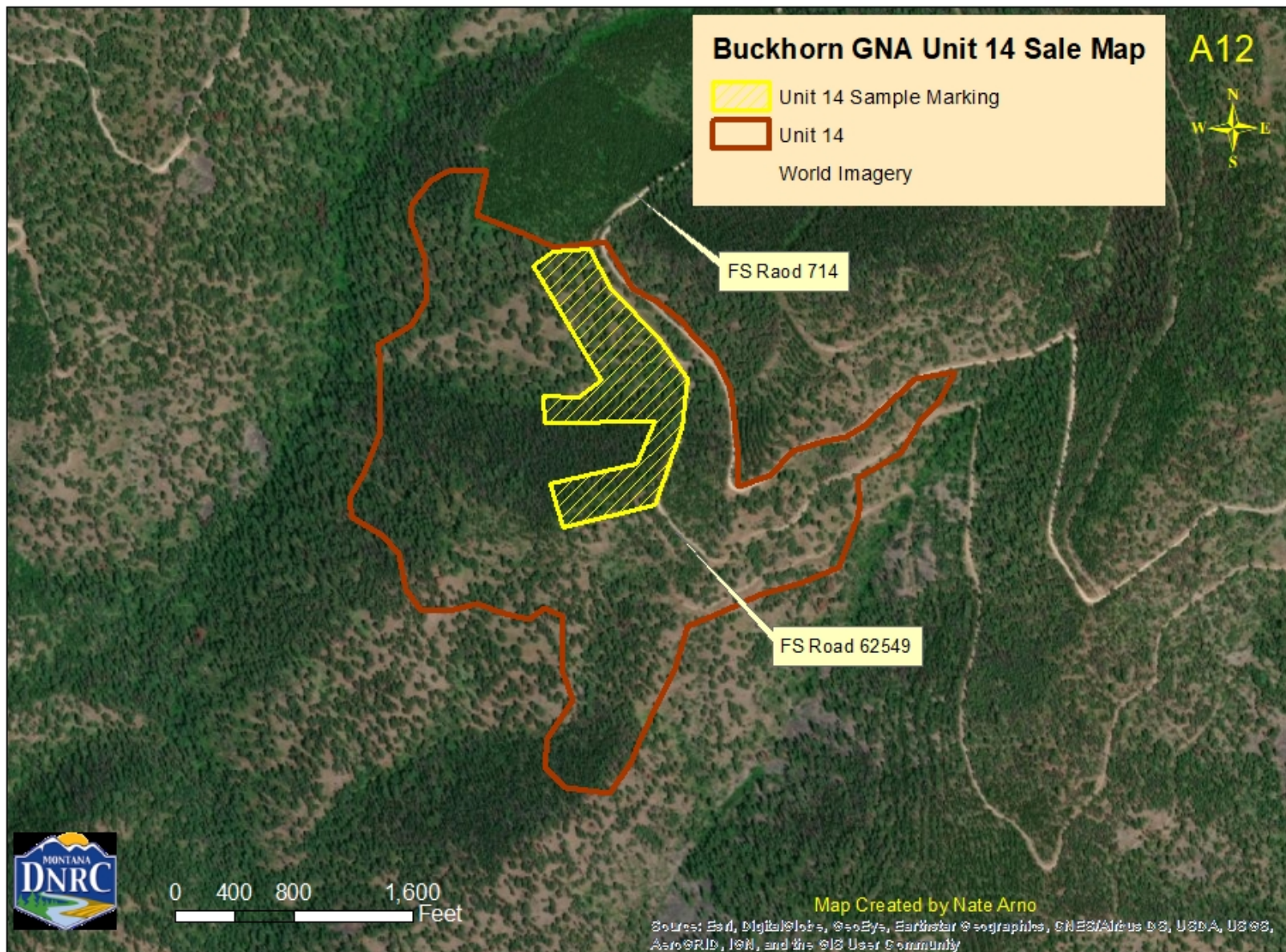
Unit 11




0 250 500 1,000 Feet

Map Created by Nate Arno

Source: Esri, DigitalGlobe, GeoEye, Earthstar Geographics, CNES/Airbus DS, USDA, USGS, AeroGRID, IGN, and the GIS User Community



Buckhorn GNA Unit 15 Sale Map

-  Unit 15 DxD Tractor 13.1 Acres
-  Unit 15 DxD Skyline/Excaline/Cable 14.2 Acres
-  Unit 15 Sample Marking
-  Haul Road FS 714
-  Haul Road FS 62550



0 0.045 0.09 0.18 Miles



Map created by Nate Arno

Sources: Esri, DigitalGlobe, GeoEye, Earthstar Geographics, CNES/Airbus DS, USDA, USGS, AeroGRID, IGN, and the GIS User Community