

TIMBER SALE PROSPECTUS
STATE OF MONTANA DEPARTMENT OF NATURAL RESOURCES AND CONSERVATION

Timber Sale Name: BLM Blackfoot Gold GNA			
For specific sale information, contact: Andy Moffett GNA Forester			
Phone	406-542-5873	Email: Andy.Moffett@MT.Gov	Southwest Land Office
For copies of the Timber Sale Contract and bid forms, contact:			
Phone	406-542-4300	Forestry Division	DNRC Missoula Office

Covid-19 DNRC Building Procedures:

Bid openings are held at the DNRC Forestry Division office in Missoula which is operating under State, County and agency guidelines. These guidelines may affect the public access to the building. If bidders would like to hand deliver their bids, or attend the bid opening, it is strongly suggested that they contact Neil Simpson at (406) 241-5697 at least 24 hours prior to the bid opening to avoid delays due to Covid-19 regulations.

General Bidding Information

1. Bids must be submitted on Department of Natural Resources & Conservation (State) bid forms.
2. Timber will be sold to the highest responsible bidder; however, the State reserves the right to reject any or all bids.
3. The State recommends that bidders contact the Good Neighbor Authority Bureau, Forestry Division (406-542-4300) prior to the bid opening to ensure that your bid has been received.
4. A **Bid Deposit** must accompany all bids and must be in the form of cash, cashiers check, certified check, money order, bank draft, surety bond or irrevocable letter of credit.
5. The Purchaser must submit a **Performance Bond** to the State within 30 days of notification of sale award. The bond amount will be, at a minimum, 20% of the total bid value of the sale. The performance bond may be cash, irrevocable letter of credit, surety bond or certificate of deposit. The performance bond must be maintained separately from other payments for the duration of the Timber Sale Contract. See the Timber Sale Contract for additional information.
6. The purchaser must submit an **Advance Stumpage Payment** prior to cutting any timber. The amount of the advance stumpage payment will cover six weeks of harvesting and be based on the expected harvest rate and the bid value of the stumpage. The advance stumpage payment may be cash, irrevocable letter of credit, payment bond or certificate of deposit.
7. This sale is being sold based on the gross weight of all species. Minimum price and bid price are on a per ton basis. Unless otherwise specified, the price applies to all species, green and dead. Price may vary by product. Billing will be based on gross weight. A weight ticket from a certified scale is required for each load hauled, regardless of product type.
8. The State has estimated the net scale merchantable sawlog volume to be sold under this Contract. Other products may be part of this sale. All delivered wood will be weighed and billed at per ton bid rates. The State recognizes that a percentage of delivered wood may not meet the log manufacturing and recovery standards of the Timber Sale Contract. The actual percentage will vary based on the log manufacturing and recovery specifications of the purchaser and tree conditions in the sale area. The actual delivered weight may vary, resulting in an overrun or under-run of the estimated tonnage. The State strongly recommends that bidders evaluate these effects before bidding.
9. The State does not conduct detailed road appraisals. All appraised costs are gross estimates or averages, provided only to show the relative amount of work required, and not the true market value. The State strongly recommends that bidders make their own estimates based on Contract requirements. Cost estimates provided are not guaranteed.
10. Bidders are encouraged to examine the complete Timber Sale Package and Sale Area prior to bidding. Additional information is available at the phone numbers shown above.
11. Estimates for sale volume, species precents, defect, product class, etc. provided in this prospectus and volume estimates listed in the Timber Sale Contract are not guaranteed.
12. This prospectus is provided for information purposes only. If the prospectus is in error or contradicts the Timber Sale Contract, the Contract governs.

Additional Sale Information:

1. This timber sale is a State of Montana Timber Sale on Bureau of Land Management (BLM) managed land being performed under the Good Neighbor Authority. Potential Purchasers should be aware that this is a partnership, between the Montana DNRC and the BLM, to increase the pace and Scale of forest restoration on BLM Lands. Good Neighbor Authority is a high priority of both agencies, and it has a high degree of public interest. The purchaser should expect increased DNRC, BLM, and public attention on this timber sale. The DNRC and BLM may wish to have public or media tours of this timber sale and we will encourage active involvement by the timber sale purchaser and their contractors.
2. Under the Good Neighbor Authority all NEPA mitigations and project design criteria must be adhered to. Specific mitigations to do so are written into the contract. The DNRC encourages potential purchasers to familiarize themselves with these mitigations prior to bidding.
3. **This timber sale is being bid in conjunction with a the GNA FS Blackfoot Gold Timber Sale.** Purchasers will submit one bid sheet for two separate timber sales. The two sales have separate minimum bid rates and contracts. All contract requirements such as bonds are separate. Contract requirements differ, and purchasers should familiarize themselves with all aspects of both timber sale packages. The winning bid will be determined by adding together the total bid value of the GNA BLM Blackfoot Gold and GNA FS Blackfoot Gold Timber Sales.
4. Sawlogs from tractor units will be at bid rate (\$/ton). Sawlogs from skyline units (HF5A and HF3A optional) is at a fixed rate of \$3.00/ton. Other material from all units is at \$1.00/ton.
5. **CERTIFICATION REGARDING DEBARMENT AND SUSPENSION:** The Purchaser must complete and deliver to the State form AD-1047, Certification Regarding Debarment, Suspension, and Other Responsibility Matters – Primary covered transactions and form AD-1048 Certification Regarding Debarment, Suspension, Ineligibility and Voluntary Exclusion – Lower tier Covered Transactions.
6. **Weed spraying** before log hauling is required on approximately 17.5 miles of roads. See Attachment B for details.
7. Paving of Johnsrud road may occur summer of 2022. Hauling may be impacted during operating period. Hauling out Ninemile Prairie may be used as an alternative haul route. BMPs will need to adhere to on the alternative route. Maintenance works includes spot blading and earthwork from Whitaker Bridge to the end of county maintenance on Ninemile road . See Attachment B for details.
8. **OTHER MATERIAL:** The contract contains unit specific provisions requiring cutting skidding and removal of other material based on DBH. The State encourages potential bidders to familiarize themselves with timber designation and merchantability specifications in the contract.
9. **A pre-bid tour** will be held for interested bidders on Monday May 10. ATV/UTV's will be required to see the sale area. We will meet at the junction of Highway 200 and Gold Creek Road at 8:00 am and spend the entire day looking at both the USFS and BLM Blackfoot Gold Sale areas. Entrance to the sale area after the pre-bid tour will require coordination with the Forest Officer. Contact Andy Moffett at (406) 274-7177 or andy.moffett@mt.gov for information.

Timber Sale Information Sheet
Montana Department of Natural Resources and Conservation

Blackfoot Gold BLM											
Timber Sale Cruise Data (Scribner 5.6" top DIB, Filter: All All Cut)											
SPECIES	PP	DF	WL	LP	ES	GF	RC	AF	WP	Dead	TOTAL or AVE
Minimum Bid per ton											
Pounds per cubic foot	62.0	61.7	58.3							40.0	
Estimated tons of sawlogs	1268	5980	95							62	7,404 tons
Estimated tons of non-sawlog material	150	219	8							1	378 tons
Gross MBF	148	834	18							14	1,013 MBF
% Cull and Breakage	4.0	11.0	24.0							14.7	9.8%
Net MBF	142	746	13							12	913 MBF
Average logs per MBF	34.9	26.7	33.9							27.0	28.1 logs/MBF
Average DBH	10.2	12.0	9.3							12.5	11.6 in.
Average tons to cut per acre	→										28 tons/ac
Average MBF to cut per acre	→										3.4 MBF/ac
Total Average TPA Cut	→										66
Calculated Sampling Error: Total cruised volume will fall between	771 and 1,055 Net MBF in 9 out of 10 cruises										15.6%
Tons Per Thousand Board Feet											
Conversion Factor - Estimated tons hauled per thousand Scribner board feet	7,404 estimated tons / 913 Net MBF										8.11 tons/MBF

Contract Information		
Contract Termination Date:	10/31/2025	
Operating Period:	Dry or Frozen Conditions excluding June 1 - July 15	

Timber Sale Information Sheet
Montana Department of Natural Resources and Conservation

Logging Information	
% of volume logged by clearcut or seed tree cut	00%
% of volume logged with tractors	91%
% of volume logged by skyline	09%
% of volume logged by other system (specify)	00%
Yarding distance tractor (average)	750 ft.
Yarding distance skyline (average)	550 ft.
Yarding distance other system (specify)	0 ft.
Estimated haul distance (paved)	65.0 miles
Estimated haul distance (unpaved)	11.5 miles

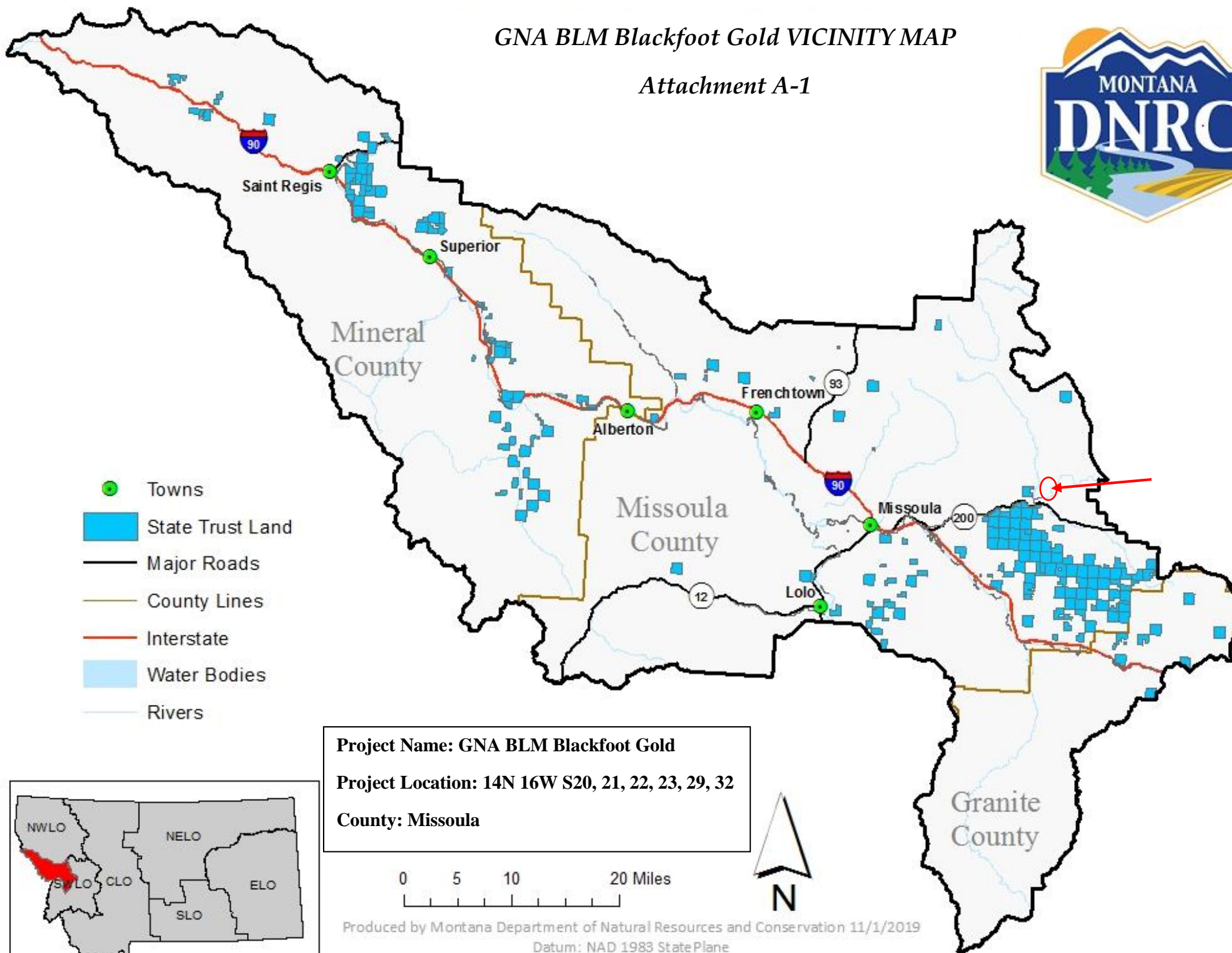
Purchaser fees and estimated costs	
Forest Improvement fee perMBF	\$0.00/MBF
Forest Improvement fee per ton	\$0.00/ton
Forest Improvement fee estimated total	\$0.00
Forest Improvement fee quarterly installment	\$0.00
Estimated Purchaser-do FI total \$	\$0
Estimated Purchaser-do FI per ton	\$0.00/ton
Estimated Purchaser-do slash disposal & other work total	\$36,000.00
Estimated Purchaser-do slash and other work per ton	\$4.86/ton

Road development and maintenance fees and estimates	
Estimated road development cost total	\$20,502
Estimated road development cost per ton	\$2.77/ton
Estimated road development cost perMBF	\$22.45/MBF
Estimated Purchaser-do road maintenance cost total	\$8,451
Estimated Purchaser-do road maintenance cost per ton	\$1.14/ton
Private road maintenance charges per ton	\$0.00/ton
USFS road maintenance charges per ton	\$0.00/ton
Miles of road construction	0.2 miles
Miles of road reconstruction	0.1 miles
Miles of road with site improvements	0.0 miles
Miles of road reclamation or abandonment	0.2 miles
Miles of road maintenance and blading	17.3 miles

Unit harvest volume				
Unit #	Acres	Est Tons	Est MBF	Harvest Deadline
HF3E	49.88	733	90	August 31, 2025
HF3C	84.08	2020	249	August 31, 2025
HF3B	8.59	241	30	August 31, 2025
HF5	31.87	1091	135	August 31, 2025
HF5C	7.67	308	38	August 31, 2025
HF5A	23.15	1094	135	August 31, 2025
HF5B	6.59	132	16	August 31, 2025
HF6A	15.51	367	45	August 31, 2025
F17	37.78	1419	175	August 31, 2025
HF3A (Optional)	3.70	104	13	August 31, 2025
	265 Ac.	7,404 tons	913 MBF	

GNA BLM Blackfoot Gold VICINITY MAP

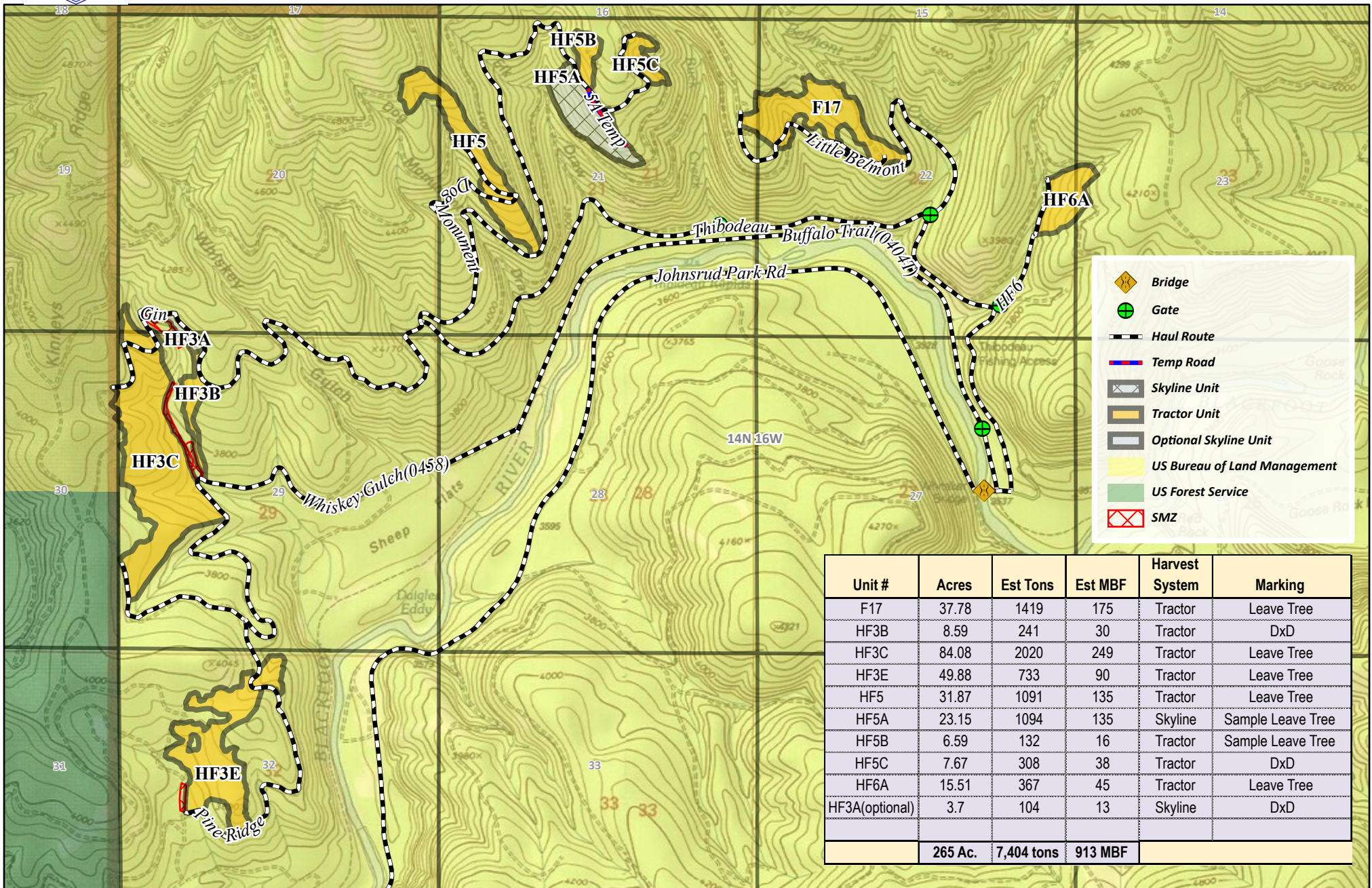
Attachment A-1





GNA BLM Blackfoot Gold Sale Map

Attachment A-2
14N 16W S20, 21, 22, 23, 29, 32



Unit #	Acres	Est Tons	Est MBF	Harvest System	Marking
F17	37.78	1419	175	Tractor	Leave Tree
HF3B	8.59	241	30	Tractor	DxD
HF3C	84.08	2020	249	Tractor	Leave Tree
HF3E	49.88	733	90	Tractor	Leave Tree
HF5	31.87	1091	135	Tractor	Leave Tree
HF5A	23.15	1094	135	Skyline	Sample Leave Tree
HF5B	6.59	132	16	Tractor	Sample Leave Tree
HF5C	7.67	308	38	Tractor	DxD
HF6A	15.51	367	45	Tractor	Leave Tree
HF3A(optional)	3.7	104	13	Skyline	DxD
	265 Ac.	7,404 tons	913 MBF		

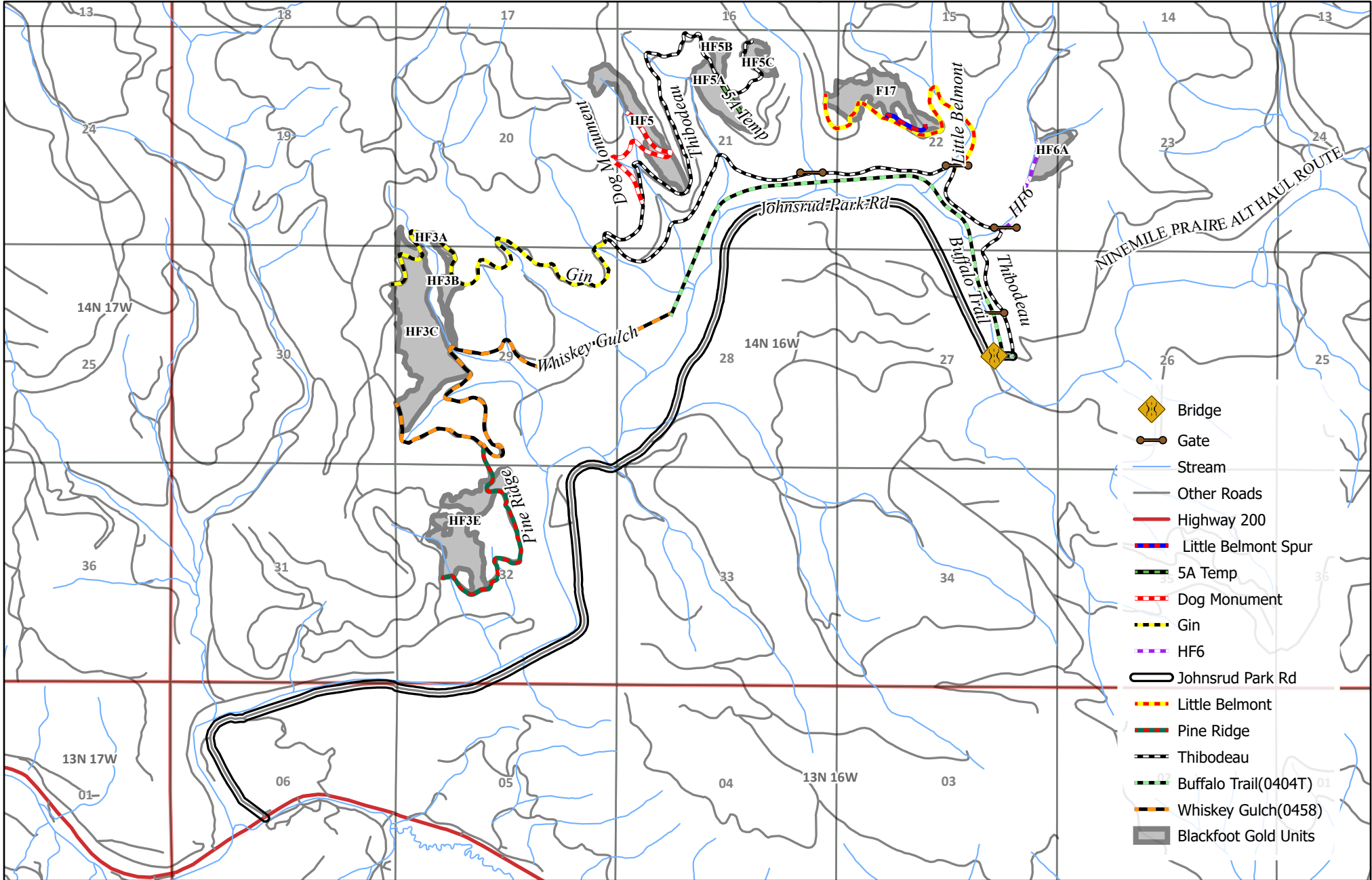




GNA BLM Blackfoot Gold Haul Route Map

Attachment A-3

14N 16W S20, 21, 22, 23, 29, 32





GNA BLM Blackfoot Gold SMZ HF3B and HF3C. HF3A.

Attachment A-4

