

NOTICE OF SALE

Department of Natural Resources & Conservation Timber Sale

The GNA Upper Fish timber sale is located within sections S10, S15, S16, S20, S22, & S28 of T29N – R24W on the Flathead National Forest. Approximately 37,702 tons, consisting of mixed conifer sawlogs, are offered for sale.

Sealed bids will be opened at the Department of Natural Resources & Conservation, 2705 Spurgin Road, Missoula, Montana on **Wednesday, July 15th, 2026, at 2:00 pm**. Bids may be hand delivered or mailed and will be accepted any time prior to the bid opening. **DNRC recommends that bidders contact the Forestry Division (406-542-4300) prior to the bid opening to ensure that your bid has been received.** Bids must be accompanied by a deposit of **\$16,731.21** representing 5% of the minimum bid value of the sale in cashier's check, certified check, bank money order or bank draft to be applied to the first sale invoice for the successful bidder. Bid bonds will be accepted and, for the successful bidder, will be closed upon execution of the Timber Sale Contract and Timber Sale Bond.

The sale will be awarded to the highest responsible bidder. If the successful bidder is unable to execute the contract within **30** calendar days from the date the sale is awarded, the bid deposit will be retained by the Department as liquidated damages. The right is reserved to reject any or all bids.

Prospective bidders can obtain the sale prospectus, sale contract and bid forms from the Department of Natural Resources & Conservation, Forestry Division, in Missoula (406-542-4300).

Visit our website for upcoming sales and bid results.

<https://dnrc.mt.gov/Forestry/Forest-Products/timber-sales>

TIMBER SALE PROSPECTUS
STATE OF MONTANA DEPARTMENT OF NATURAL RESOURCES AND CONSERVATION

Timber Sale Name: GNA Upper Fish			
For specific sale information, contact:			
Phone	406-751-2267	Forester Rachel Cutler	Kalispell Unit
For copies of the Timber Sale Contract and bid forms, contact:			
Phone	406-542-4300	Missoula DNRC Main Office	GNA Bureau
Phone	406-751-2240		Kalispell Unit

General Bidding Information

1. Bids must be submitted on Department of Natural Resources & Conservation (State) bid forms.
2. Timber will be sold to the highest responsible bidder; however, the State reserves the right to reject any or all bids.
3. The State recommends that bidders contact the Good Neighbor Authority Bureau, Forestry Division (406-542-4300) prior to the bid opening to ensure that your bid has been received.
4. A **Bid Deposit** must accompany all bids and must be in the form of cash, cashiers check, certified check, money order, bank draft, surety bond or irrevocable letter of credit.
5. The Purchaser must submit a **Performance Bond** to the State within 30 days of notification of sale award. The bond amount will be, at a minimum, 20% of the total bid value of the sale. The performance bond may be cash, irrevocable letter of credit, surety bond or certificate of deposit. The performance bond must be maintained separately from other payments for the duration of the Timber Sale Contract. See the Timber Sale Contract for additional information.
6. The purchaser must submit an **Advance Stumpage Payment** prior to cutting any timber. The amount of the advance stumpage payment will cover six weeks of harvesting and be based on the expected harvest rate and the bid value of the stumpage. The advance stumpage payment may be cash, irrevocable letter of credit, payment bond or certificate of deposit.
7. This sale is being sold based on the gross weight of all species. Minimum price and bid price are on a per ton basis. Unless otherwise specified, the price applies to all species, green and dead. Price may vary by product. Billing will be based on gross weight. A weight ticket from a certified scale is required for each load hauled, regardless of product type.
8. The State has estimated the net scale merchantable sawlog volume to be sold under this Contract. Other products may be part of this sale. All delivered wood will be weighed and billed at per ton bid rates. The State recognizes that a percentage of delivered wood may not meet the log manufacturing and recovery standards of the Timber Sale Contract. The actual percentage will vary based on the log manufacturing and recovery specifications of the purchaser and tree conditions in the sale area. The actual delivered weight may vary, resulting in an overrun or under-run of the estimated tonnage. The State strongly recommends that bidders evaluate these effects before bidding.
9. The State does not conduct detailed road appraisals. All appraised costs are gross estimates or averages, provided only to show the relative amount of work required, and not the true market value. The State strongly recommends that bidders make their own estimates based on Contract requirements. Cost estimates provided are not guaranteed.
10. Bidders are encouraged to examine the complete Timber Sale Package and Sale Area prior to bidding. Additional information is available at the phone numbers shown above.
11. Estimates for sale volume, species percents, defect, product class, etc. provided in this prospectus and volume estimates listed in the Timber Sale Contract are not guaranteed.
12. This prospectus is provided for information purposes only. If the prospectus is in error or contradicts the Timber Sale Contract, the Contract governs.

Additional Sale Information:

1. This timber sale is a State of Montana Timber Sale on Forest Service Land and is being performed under the Good Neighbor Authority. Potential Purchasers should be aware that this is a partnership, between the Montana DNRC and the US Forest Service, to increase the pace and Scale of forest restoration on National Forest System Lands. Considering Good Neighbor Authority is a high priority of both agencies, and it has a high degree of public interest, the purchaser should expect increased DNRC, Forest Service, and public attention on this timber sale. The DNRC and Forest Service may wish to have public or media tours of this timber sale and we will encourage active involvement by the timber sale purchaser and their contractors.
2. Under the Good Neighbor Authority all NEPA mitigations and Forest Plan requirements must be adhered to. Specific mitigations to do so are written into the contract. The DNRC encourages potential purchasers to familiarize themselves with these mitigations prior to bidding.
3. Unlike DNRC Trust Lands Timber Sales, no Forest Improvement Fees will be charged.
4. Unlike Forest Service Timber Sales, all deposits such as KV, BD, and road Deposits are included in the stumpage value and accounted for between the DNRC and Forest Service.
5. Log Branding: This contract is subject to the Forest Resource Conservation and Shortage Relief Act of 1990, as amended (12 USC 620, et seq.) The purchaser must comply with log branding and accounting rules in Attachment E.
6. The GNA Upper Fish sale is located west of Kalispell, MT. Please see Attachment A pages 1-6 for further information on sale location.
7. There are two haul routes for GNA Upper Fish. Haul route A will be used for the east side of the sale. This route starts on South Logan (FS 11258), which turns into Logan Creek (FS 313) 2.6 miles after the gate. Logan Creek Road continues for 6.3 miles until you reach the paved Star Meadows Road. The South Logan Road is gated at mile 2.35 and the combination lock code is **2-2-6-7**. Haul Route B will be used for the west side of the sale. This route utilizes the Fish Creek Road (FS 10236) for approximately 11.4 miles until you reach N. Ashley Lake Road. The Fish Creek Road is gated at mile 4.1 and the combination lock code is **2-2-6-7**.
8. The purchaser **is required to cut, skid and dispose of** (placed in landing pile at a minimum) **or haul Other Material** that does not meet Sawlog Manufacturing and Recovery Standards in Table 2 of GNA Upper Fish Contract. Hauling of other material is not required. **The Purchaser may elect to remove Other Material as approved by the Forest Officer. Such products shall be billed at the rate for Other Material shown in Table 1 of GNA Upper Fish contract.** In units with slashing and excavator piling, the purchaser may dispose of other materials in the in-unit piles with approval from the forest officer.
9. The GNA Upper Fish Timber Sale has three optional harvest units that the purchaser may elect to cut.
10. **Slashing Required:** Slashing is required in units 169, 171A, 174, 177A, 177B, 177C, 177D, 183, 187A, 187B, 188A, 188B, 188D, 188E, 189, 193, 194A, 194B, 195A, 195B, 196, 197A, 197B, 199, 200A, 200B, 201, 203, **200C, and 200D**. Section VII. G.1 in the contract. Approximately 438 acres of slashing, plus additional if optional units are harvested.
11. **Excavator Piling Required:** Excavator piling is required in units 169, 171A, 177A, 177C, 177D, 183, 187A, 187B, 188A, 189, 193, 195A, 195B, 196, 197A, 197B, 199, 200A, 200B, 201, 203, **200C, and 200D**. Section VII. G. 2 in the contract. Approximately 354 acres of piling, plus additional if optional units are harvested.
12. **Skyline Yarding Required:** A skyline yarding system capable of yarding 1,600-2,000 feet external yarding distance uphill must be used. A carriage capable of 50 feet minimum lateral yarding distance is required. The carriage must maintain a fixed position on the skyline while lateral yarding. Please see Section VII. G.3 in the contract for further requirements and Section VII. F (unit designations) for units and acreage.
13. **Alternate Yarding Systems May Be Approved:** The Forest Officer may approve alternative yarding methods besides those specified for each sale unit. An alternative system proposed by the Purchaser must be approved by the Forest Officer at or before the time the Logging Operations Plan for the unit is approved. The Forest Officer will only approve alternatives that are consistent with planned mitigation and resource protection measures. Alternatives may include tethered equipment or other systems. Costs of alternative systems will be borne by the Purchaser.

Upper Fish												
Timber Sale Cruise Data (Scribner 5.6" top DIB, Filter: All All Cut)												
	PP	DF	WL	LP	ES	GF	RC	AF	WP	WH	Dead	TOTAL or AVE
Minimum Bid per ton												
Pounds per cubic foot		55.5	52.2	50.4	51.3						0.0	
Estimated CF		184,203.40	76,556.60	895,797.20	30,881.40			18,805.60			0.0	1,206,244 CF
Estimated CF of non-sawlog material		6,456.50	2,512.30	70,610.60	994.20			1,045.50			0.0	81,619 CF
Estimated tons of sawlogs		4,694.30	1,750.80	20,686.80	700.50			393.40			0	28,226 tons
Estimated tons of non-sawlog material		164.90	58.60	1,635.90	22.50			21.90			0	9,476 tons
Gross MBF		749.40	331.20	3,273.10	122.30			69.20			0	4,545 MBF
% Cull and Breakage		8.00	12.00	8.00	11.00			15.00			0.0	8.9%
Net MBF		688.2	289.9	2,997.6	108.4			58.5			0	4,143 MBF
Average logs per MBF		27.4	28.9	38.9	28.1			38.6			0.0	35.9 logs/MBF
Average DBH		10.5	10.4	8.5	10.3			9.2			0.0	8.9 in.
Average tons to cut per acre												47 tons/acre
Average MBF to cut per acre												6.9 MBF/acre
Total Average TPA Cut												230
Calculated Sampling Error: Total cruised volume will fall between			3,742 and 4,543 Net MBF in 9 out of 10 cruises									9.6%
Tons Per Thousand Board Feet												
Conversion Factor - Estimated tons hauled per thousand Scribner board feet												6.81 tons/MBF

Contract Information		
Contract Termination Date:	10/15/2030	
Operating Period:	When soil conditions meet VIII.L. 1 a-c and VII.N.	

Logging Information	
% of volume logged by clearcut or seed tree cut	74%
% of volume logged with tractors	75%
% of volume logged by skyline	25%
% of volume logged by other system (specify)	00%
Yarding distance tractor (average)	470 ft.
Yarding distance skyline (average)	400 ft.
Yarding distance other system (specify)	N/A
Estimated haul distance (paved)	25.0 miles
Estimated haul distance (unpaved)	16.0 miles

Road development and maintenance fees and estimates	
Estimated road development cost total	\$86,236
Estimated road development cost per ton	\$3.06/ton
Estimated road development cost per MBF	\$20.82/MBF
Estimated Purchaser-do road maintenance cost total	\$46,905
Estimated Purchaser-do road maintenance cost per ton	\$1.66/ton
Private road maintenance charges per ton	N/A
USFS road maintenance charges per ton	N/A
Miles of road construction	0.1 miles
Miles of road reconstruction	0.0 miles
Miles of road with site improvements	0.0 miles
Miles of road reclamation or abandonment	0.1 miles
Miles of road maintenance and blading	29.0 miles

Purchaser fees and estimated costs	
Forest Improvement fee per MBF	N/A
Forest Improvement fee per ton	N/A
Forest Improvement fee estimated total	N/A
Forest Improvement fee quarterly installment	N/A
Estimated Purchaser-do FI total \$	N/A
Estimated Purchaser-do FI per ton	N/A
Estimated Purchaser-do slash disposal work total	\$195,000.00
Estimated Purchaser-do slash disposal work per ton	\$6.91/ton

Unit harvest volume					Haul Route A	Haul Route B
Unit #	Acres	Est Tons	Est MBF	Harvest Deadline		
169	2.72	48	7	August 1, 2030	48	
171A	15.58	615	90	August 1, 2030	289	
171B	3.23	189	27	August 1, 2030	441	
171C	3.69	61	9	August 1, 2030	1386	
171D	11.10	363	53	August 1, 2030		1657
171E	6.67	175	25	August 1, 2030		1174
171F	7.33	188	27	August 1, 2030		564
171G	3.60	157	23	August 1, 2030	342	
171H	2.96	272	40	August 1, 2030	100	
174	10.08	288	43	August 1, 2030	134	
176	10.39	440	64	August 1, 2030	685	
177A	4.83	134	19	August 1, 2030	623	
177B	8.97	325	48	August 1, 2030	672	
177C	5.54	184	27	August 1, 2030	2311	
177D	13.71	782	114	August 1, 2030	1724	
180	19.21	1383	204	August 1, 2030		391
183	38.47	1653	243	August 1, 2030		589
184	38.30	1172	171	August 1, 2030		481
185	7.82	563	82	August 1, 2030		135
187A	7.03	390	57	August 1, 2030		589
187B	10.41	567	83	August 1, 2030		568
187C	8.14	197	29	August 1, 2030		848
188A	7.55	588	86	August 1, 2030		1161
188B	4.10	135	20	August 1, 2030		1139
188C	10.84	934	146	August 1, 2030		486
188D	5.23	400	58	August 1, 2030		400
188E	8.30	485	71	August 1, 2030		939
189	8.60	341	50	August 1, 2030	258	
190	5.98	100	15	August 1, 2030	783	
193	3.50	134	20	August 1, 2030	184	
194A	17.29	480	70	August 1, 2030	326	
194B	29.83	2410	351	August 1, 2030	134	

Haul Route A Total: 15398
Haul Route B Total: 13283

Unit harvest volume (Optional Units)					Haul Route A	Haul Route B
Unit #	Acres	Est Tons	Est MBF	Harvest Deadline		
200C	16.47	515	65	August 1, 2030		515
200D	11.98	333	42	August 1, 2030		333
171H	3.02	17	2	August 1, 2030	17	

17 848

Timber Sale Information Sheet
 Montana Department of Natural Resources and Conservation

195A	42.65	1759	256	August 1, 2030	1763	
195B	4.12	257	37	August 1, 2030		2414
196	16.32	683	100	August 1, 2030	616	
197A	22.81	1137	166	August 1, 2030	189	
197B	16.63	846	126	August 1, 2030	61	
198	18.95	622	91	August 1, 2030	363	
199	18.45	670	98	August 1, 2030	175	
200A	16.55	1155	178	August 1, 2030		922
200B	28.14	921	134	August 1, 2030	188	
201	47.00	2306	336	August 1, 2030	157	
203	24.21	1720	251	August 1, 2030	272	
	597 Ac.	28,226 tons	4,143 MBF		15398	13283



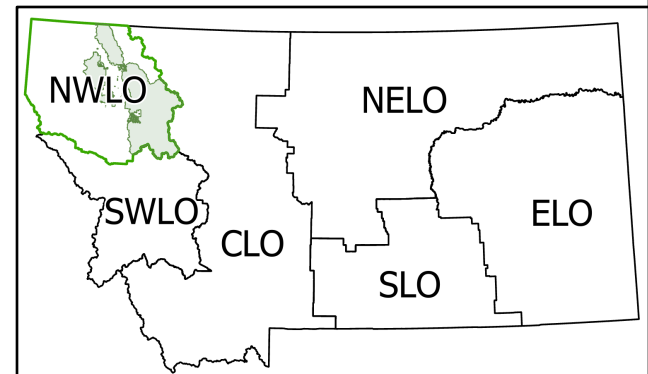
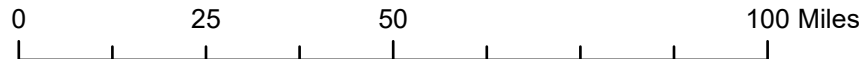
GNA Upper Fish Attachment A-1: Vicinity Map



The sale is located approximately 17 miles North West of Kalispell. It is contained within township 29 North, range 24 West, and sections 15, 16, 20, 22, and 28.

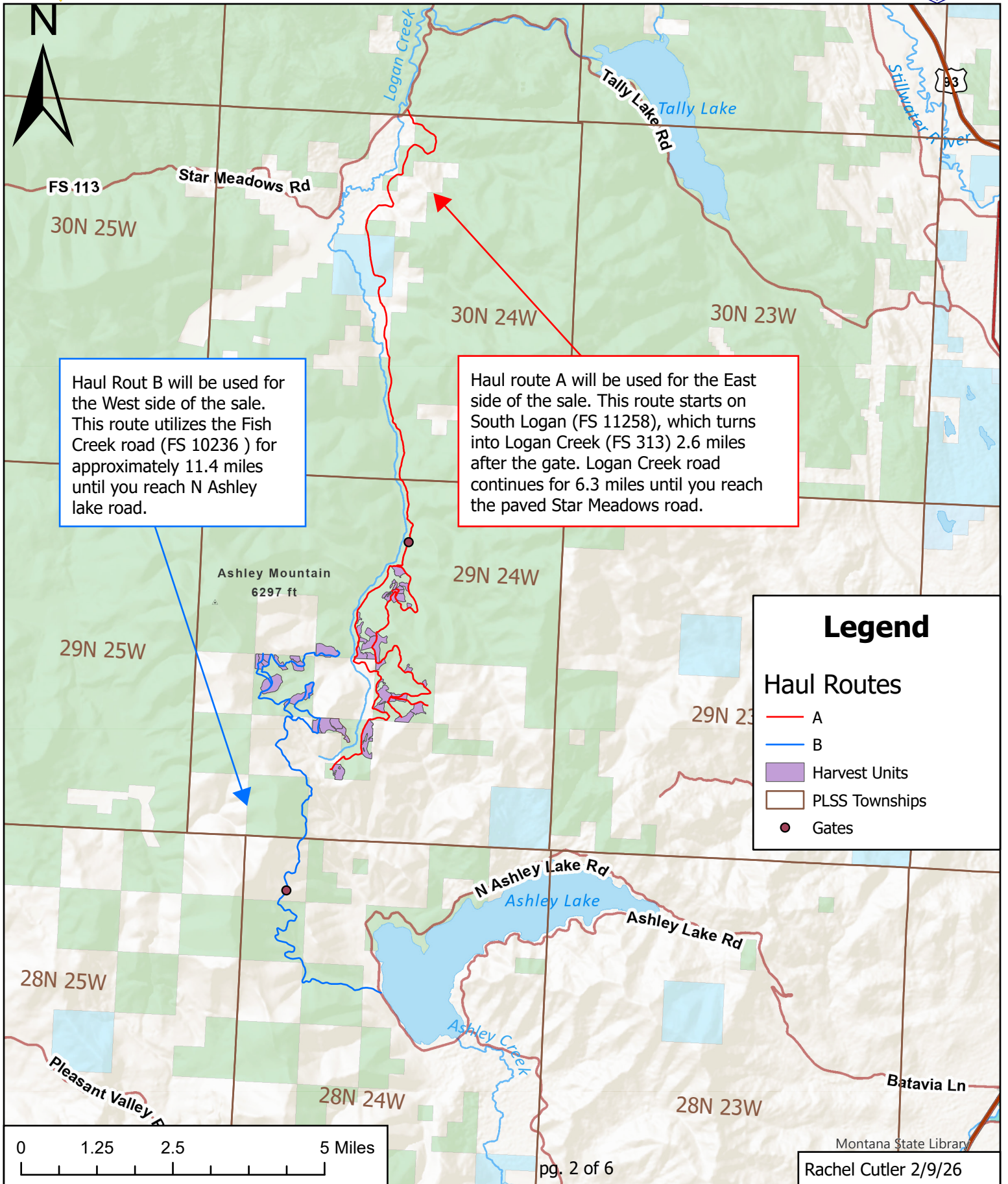


- Cities
- Highways & Roads
- ▭ NW Land Office
- ▭ Lakes
- ▭ Flathead NF
- ▭ Counties



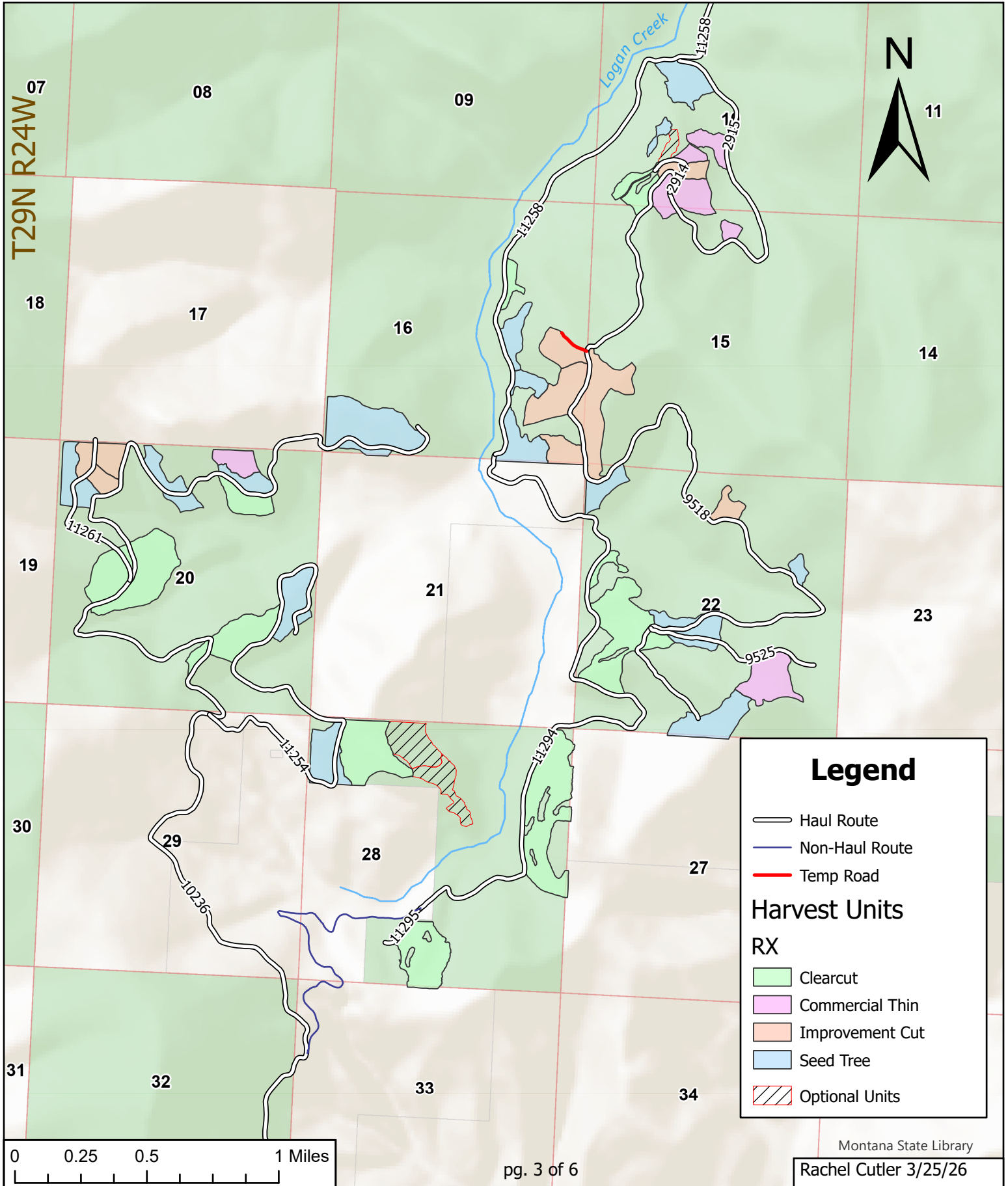


GNA Upper Fish Attachment A-2: Haul Routes



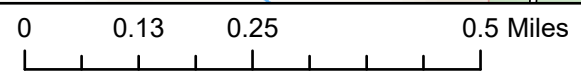
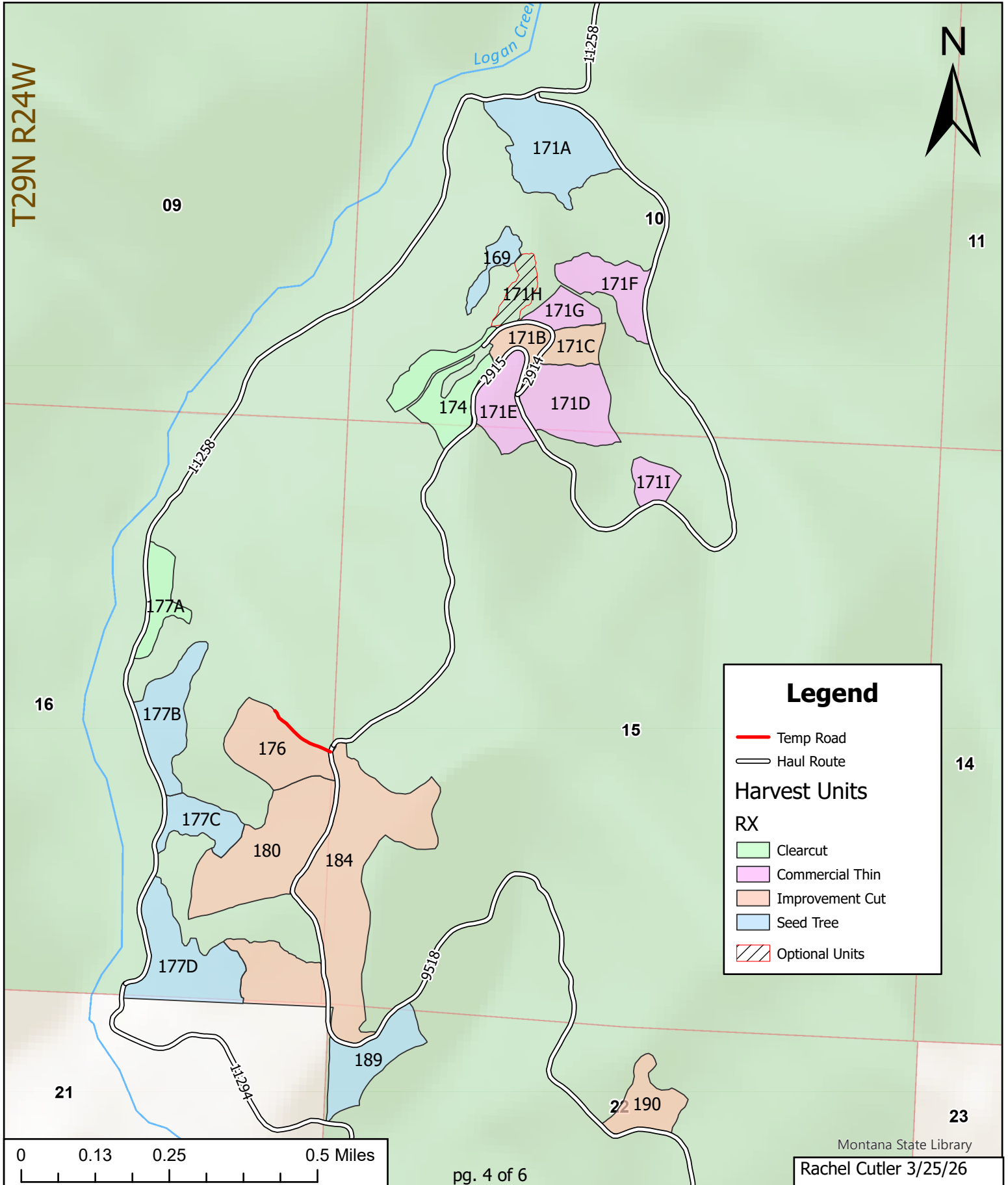


GNA Upper Fish Attachment A-3: Unit Overview Map



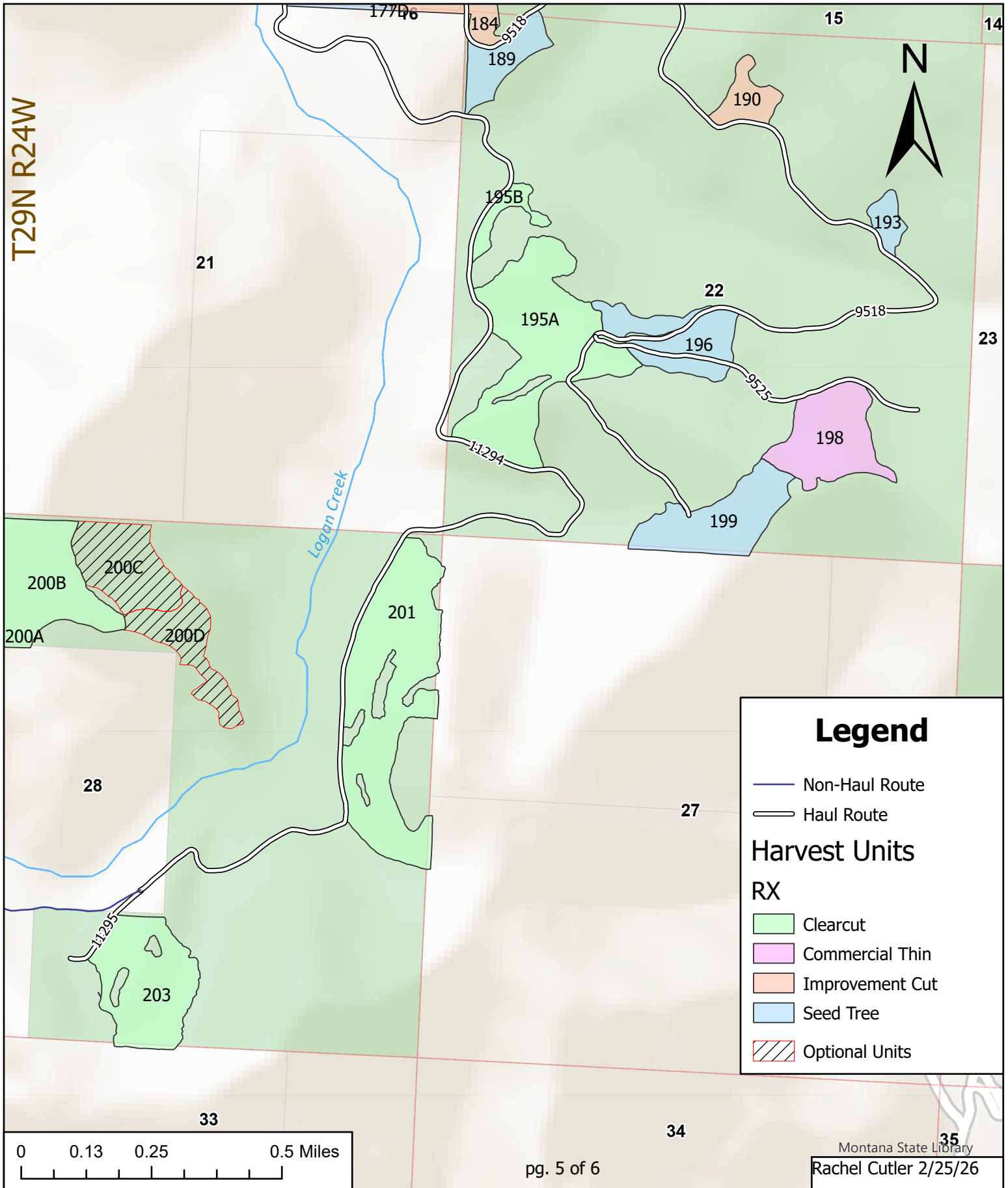


GNA Upper Fish Attachment A-4: Unit Map 1





GNA Upper Fish Attachment A-5: Unit Map 2





GNA Upper Fish Attachment A-6: Unit Map 3

