

NOTICE OF SALE

Department of Natural Resources & Conservation Timber Sale

The GNA Rice timber sale is located within sections 15, 21, 22, 27, NE ¼ 28 of T17N – R15W on the Lolo National Forest. Approximately 35,460 tons, consisting of mixed conifer sawlogs, are offered for sale.

Sealed bids will be opened at the Department of Natural Resources & Conservation, 2705 Spurgin Road, Missoula, Montana on **Friday, February 6th, 2026, at 2:00 pm**. Bids may be hand delivered or mailed and will be accepted any time prior to the bid opening. **DNRC recommends that bidders contact the Forestry Division (406-542-4300) prior to the bid opening to ensure that your bid has been received.** Bids must be accompanied by a deposit of **\$15,616.00** representing 5% of the minimum bid value of the sale in cashier's check, certified check, bank money order or bank draft to be applied to the first sale invoice for the successful bidder. Bid bonds will be accepted and, for the successful bidder, will be closed upon execution of the Timber Sale Contract and Timber Sale Bond.

The sale will be awarded to the highest responsible bidder. If the successful bidder is unable to execute the contract within **30** calendar days from the date the sale is awarded, the bid deposit will be retained by the Department as liquidated damages. The right is reserved to reject any or all bids.

Prospective bidders can obtain the sale prospectus, sale contract and bid forms from the Department of Natural Resources & Conservation, Forestry Division, in Missoula (406-542-4300).

Visit our website for upcoming sales and bid results.

<https://dnrc.mt.gov/Forestry/Forest-Products/timber-sales>

TIMBER SALE PROSPECTUS
STATE OF MONTANA DEPARTMENT OF NATURAL RESOURCES AND CONSERVATION

Timber Sale Name: Rice			
For specific sale information, contact:			
Phone	406-531-0265	Brian Cannata	DNRC Southwest Land Office
For copies of the Timber Sale Contract and bid forms, contact:			
Phone	406-542-4300	Forestry Division	DNRC Missoula Office

General Bidding Information

1. Bids must be submitted on Department of Natural Resources & Conservation (State) bid forms.
2. Timber will be sold to the highest responsible bidder; however, the State reserves the right to reject any or all bids.
3. The State recommends that bidders contact the Good Neighbor Authority Bureau, Forestry Division (406-542-4300) prior to the bid opening to ensure that your bid has been received.
4. A **Bid Deposit** must accompany all bids and must be in the form of cash, cashiers check, certified check, money order, bank draft, surety bond or irrevocable letter of credit.
5. The Purchaser must submit a **Performance Bond** to the State within 30 days of notification of sale award. The bond amount will be, at a minimum, 20% of the total bid value of the sale. The performance bond may be cash, irrevocable letter of credit, surety bond or certificate of deposit. The performance bond must be maintained separately from other payments for the duration of the Timber Sale Contract. See the Timber Sale Contract for additional information.
6. The purchaser must submit an **Advance Stumpage Payment** prior to cutting any timber. The amount of the advance stumpage payment will cover six weeks of harvesting and be based on the expected harvest rate and the bid value of the stumpage. The advance stumpage payment may be cash, irrevocable letter of credit, payment bond or certificate of deposit.
7. This sale is being sold based on the gross weight of all species. Minimum price and bid price are on a per ton basis. Unless otherwise specified, the price applies to all species, green and dead. Price may vary by product. Billing will be based on gross weight. A weight ticket from a certified scale is required for each load hauled, regardless of product type.
8. The State has estimated the net scale merchantable sawlog volume to be sold under this Contract. Other products may be part of this sale. All delivered wood will be weighed and billed at per ton bid rates. The State recognizes that a percentage of delivered wood may not meet the log manufacturing and recovery standards of the Timber Sale Contract. The actual percentage will vary based on the log manufacturing and recovery specifications of the purchaser and tree conditions in the sale area. The actual delivered weight may vary, resulting in an overrun or under-run of the estimated tonnage. The State strongly recommends that bidders evaluate these effects before bidding.
9. The State does not conduct detailed road appraisals. All appraised costs are gross estimates or averages, provided only to show the relative amount of work required, and not the true market value. The State strongly recommends that bidders make their own estimates based on Contract requirements. Cost estimates provided are not guaranteed.
10. Bidders are encouraged to examine the complete Timber Sale Package and Sale Area prior to bidding. Additional information is available at the phone numbers shown above.
11. Estimates for sale volume, species percents, defect, product class, etc. provided in this prospectus and volume estimates listed in the Timber Sale Contract are not guaranteed.
12. This prospectus is provided for information purposes only. If the prospectus is in error or contradicts the Timber Sale Contract, the Contract governs.

Additional Sale Information:

- This timber sale is a State of Montana Timber Sale on Forest Service Land and is being performed under the Good Neighbor Authority. Potential Purchasers should be aware that this is a partnership, between the Montana DNRC and the US Forest Service, to increase the pace and scale of forest restoration on National Forest System Lands. Considering this is one of the first Good Neighbor Timber Sales in Montana, Good Neighbor Authority is a high priority of both agencies, and it has a high degree of public interest, the purchaser should expect increased DNRC, Forest Service, and public attention on this timber sale. The DNRC and Forest Service may wish to have public or media tours of this timber sale and we will encourage active involvement by the timber sale purchaser and their contractors.
- Under the Good Neighbor Authority all NEPA mitigations and Forest Plan requirements must be adhered to. Specific mitigations to do so are written into the contract. The DNRC encourages potential purchasers to familiarize themselves with these mitigations prior to bidding.
- DESIGNATION BY PRESCRIPTION: See contract for specific cutting information in these units.
- BORATE APPLICATION REQUIRED: Borate application is required on Ponderosa Pine stumps greater than 12" (See contract more information).
- OTHER MATERIAL: Treatment of other material not meeting sawlog specifications is required in all mechanically harvested units. See contract for more information.
 - The purchaser has the option of disposing of other material by using any of the following methods, in accordance with instructions of the Forest Officer:
 - Processing into a pulp log and hauling at the rate listed for Other Material in Table 1. *See contract*
 - Processing into other product log and hauling at the rate listed for Other Material in Table 1. *See contract*
 - Skidded to a landing pile (subject to contract constraint on landing pile size).
 - Lopped and scattered within the unit (subject to slash height and tons per acre constraint).
- Slashing of damaged sub-merchantable material is required in all units. See contract for more information.
- Cable harvest systems required in some Special Operating Areas.
- Special Operating Requirements:
 - Soils: Units 14 and 15 have sensitive soils at high risk for unacceptable levels of detrimental soil disturbance (DSD). As a result, unit harvest will be restricted to Winter Conditions only. Additionally, Cut-to-Length equipment are required in units 14 and 15 and must operate on a slash mat during the course of harvest operations to mitigate potential soil disturbance. For Definition of Winter Conditions, See Section VII.L.2-3
 - Restricted Operating Period: Operations in Unit 26 will be restricted to April 1 – November 30 in any given year. No operations will be allowed outside of this operational period. Access into unit on FR 4369 will also be restricted to April 1- November 30.
 - Restricted Operating Period: If Purchaser elects to utilize tethered harvest system in units 18A or 18B, winter harvest will be required. Winter Harvest restrictions not required if excaline or traditional cable yarding is utilized. For Definition of Winter Conditions, See Section VII.L.2-3

A pre-bid tour of the sale area will be held on 1/15/2026 at 0900. We will meet in the Seeley Lake Ranger District Parking Lot. Please RSVP to Brian Cannata at brian.cannata@mt.gov by COB 1/13/2026. If no-one responds by this date, the field tour will be cancelled.

Rice											
Timber Sale Cruise Data (Scribner 5.6" top DIB, Filter: All All Cut)											
SPECIES	DF	WL	LP	ES	GF	RC	AF	WP	WH	Dead	TOTAL or AVE
Minimum Bid per ton											
Pounds per cubic foot	61.7	58.3	56.0	57.0			55.0			40.0	
Estimated CF	1067802.4	65479.2	89939.4	16925.1			19237.0			257354.2	1,521,591 CF
Estimated CF of non-sawlog material	14979.5	3493.4	4486.9	299.7			433.1			3637.1	27,597 CF
Estimated tons of sawlogs	29364	1705	2278	432			448			1085	35,460 tons
Estimated tons of non-sawlog material	414	91	115	8			10			11	657 tons
Gross MBF	4606	233	314	90			84			1185	6,523 MBF
% Cull and Breakage	10.5	10.3	9.4	10.0			15.0			77.5	23.0%
Net MBF	4117	208	283	81			71			265	5,025 MBF
Average logs per MBF	21.6	37.0	36.9	14.1			24.6			32.6	23.7 logs/MBF
Average DBH	12.5	9.2	9.3	11.6			11.1			12.9	12.2 in.
Average tons to cut per acre											32 tons/ac
Average MBF to cut per acre											4.6 MBF/ac
Total Average TPA Cut											78
Calculated Sampling Error: Total cruised volume will fall between	4,611 and 5,482 Net MBF in 9 out of 10 cruises										8.6%
Tons Per Thousand Board Feet											
Conversion Factor - Estimated tons hauled per thousand Scribner board feet	35,460 estimated tons / 5,025 Net MBF										7.06 tons/MBF

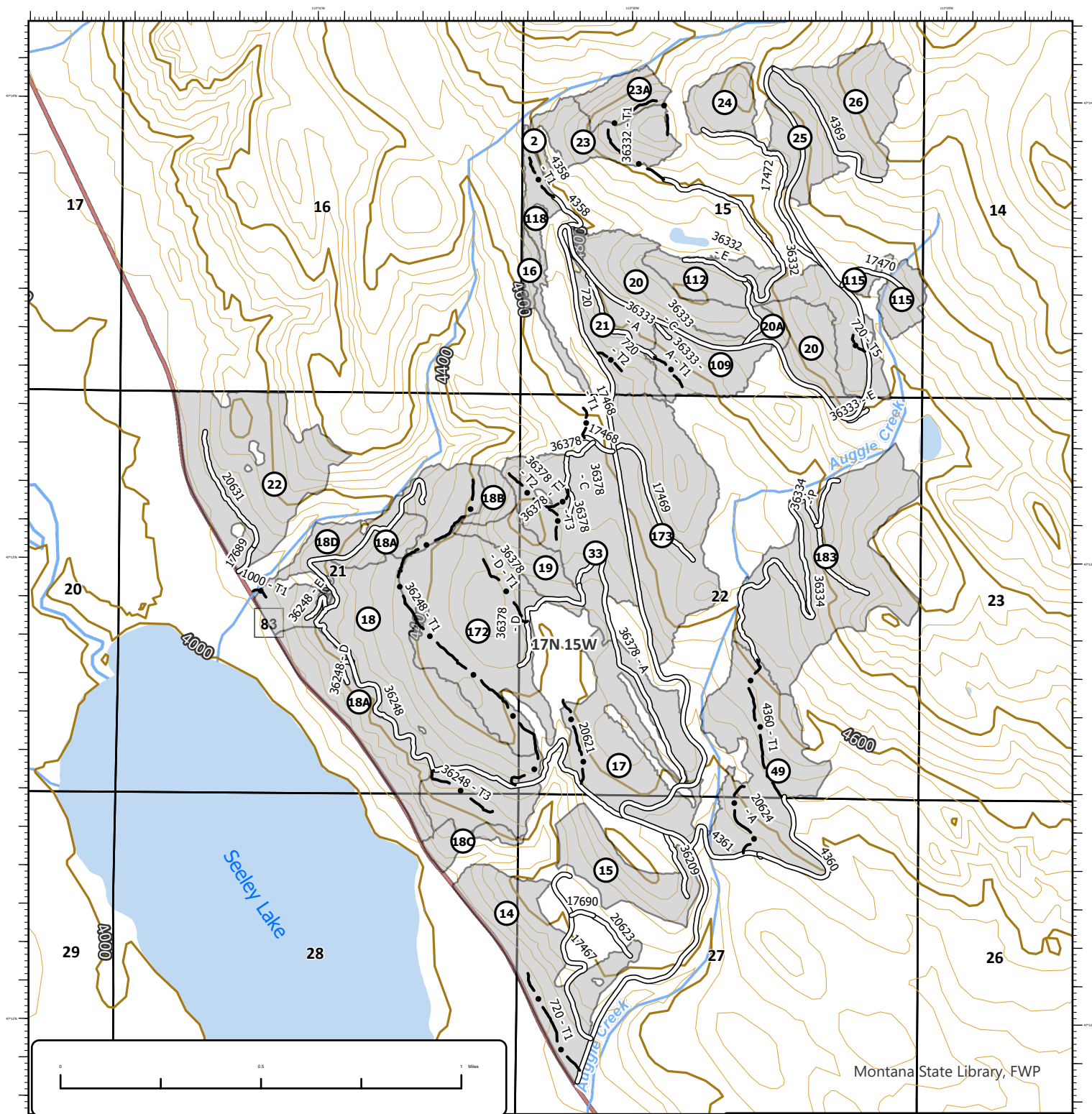
Contract Information		
Contract Termination Date:	11/1/2030	
Operating Period:	All units except Unit 26: Dry or Frozen (see VII.L.2-3). Unit 26: Between April 1-November 30 only, must be Dry or Frozen (See VII.L.2-3)	

Logging Information	
% of volume logged by clearcut or seed tree cut	46%
% of volume logged with tractors	53%
% of volume logged by skyline or ground-lead	08%
% of volume logged by Cut-to-Length	39%
Yarding distance tractor (average)	600 ft.
Yarding distance skyline (average)	300 ft.
Yarding distance other system (specify)	600 ft.
Estimated haul distance (paved)	94.0 miles
Estimated haul distance (unpaved)	3.0 miles

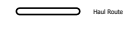
Road development and maintenance fees and estimates	
Estimated road development cost total	\$153,622
Estimated road development cost per ton	\$4.33/ton
Estimated road development cost perMBF	\$30.57/MBF
Estimated Purchaser-do road maintenance cost total	\$65,816
Estimated Purchaser-do road maintenance cost per ton	\$1.86/ton
Private road maintenance charges per ton	\$0.00/ton
USFS road maintenance charges per ton	\$0.00/ton
Miles of road construction	3.3 miles
Miles of road reconstruction	0.3 miles
Miles of road with site improvements	5.1 miles
Miles of road reclamation or abandonment	5.4 miles
Miles of road maintenance and blading	9.6 miles

Purchaser fees and estimated costs	
Forest Improvement fee perMBF	\$0.00/MBF
Forest Improvement fee per ton	\$0.00/ton
Forest Improvement fee estimated total	\$0.00
Forest Improvement fee quarterly installment	\$0.00
Estimated Purchaser-do FI total \$	\$0
Estimated Purchaser-do FI per ton	\$0.00/ton
Estimated Purchaser-do slash disposal work total	\$0.00
Estimated Purchaser-do slash disposal work per ton	\$0.00/ton

Unit harvest volume						
Unit #	Acres	Est Tons	Est MBF	Yarding	Rx	Harvest Deadline
2	1.60	53	8	Ground-Lead	Regen	3/15/2030
14	52.21	1907	270	CTL	Regen	3/15/2030
15	30.33	1083	153	CTL	Regen	3/15/2030
16	4.06	262	37	CTL	Regen	3/15/2030
17	63.99	1647	233	CTL	Regen	3/15/2030
18	116.39	4499	637	WT or CTL	Intermediate	3/15/2030
19	17.92	875	124	WT or CTL	Regen	3/15/2030
20	53.77	2045	290	CTL	Regen	3/15/2030
21	24.75	1396	198	WT or CTL	Regen	3/15/2030
22	72.05	3172	449	CTL	Intermediate	3/15/2030
23	24.74	786	111	CTL	Regen	3/15/2030
24	15.08	525	74	WT or CTL	Regen	3/15/2030
25	23.06	998	141	CTL	Regen	3/15/2030
26	33.88	2037	289	CTL	Regen	11/30/2029
33	55.47	1819	258	WT or CTL	Intermediate	3/15/2030
49	65.02	2202	312	WT or CTL	Regen	11/1/2026
109	26.28	693	98	WT or CTL	YFMT	3/15/2030
112	44.04	867	123	WT or CTL	YFMT	3/15/2030
115	13.31	250	35	WT or CTL	YFMT	3/15/2030
118	12.57	220	31	WT or CTL	YFMT	3/15/2030
172	80.70	1579	224	WT or CTL	YFMT	3/15/2030
173	73.89	1340	190	WT or CTL	YFMT	3/15/2030
183	91.22	1060	150	WT or CTL	YFMT	11/1/2026
18A	45.56	1955	277	Cable/Tether	Intermediate	3/15/2030
18B	6.67	260	37	Ground-Lead	Intermediate	3/15/2030
18C	7.78	487	69	Ground-Lead	Intermediate	3/15/2030
18D	23.40	930	132	CTL	Intermediate	3/15/2030
20A	3.14	113	16	Ground-Lead	Regen	3/15/2030
23A	12.98	401	57	Cable/Tether	Regen	3/15/2030
	1,096 Ac.	35,460 tons	5,025 MBF			



GNA Rice Timber Sale
Lolo National Forest
Seeley Lake Ranger District
Highway 83 North Project Area



Unit #	Acres	Est Tons	Est MBF	Unit Table		Harvest Re	Restrictions
				Yarding	Harvest Re		
2	2	53	8	Ground-Lead *	Regen		
14	52	1907	270	CTL	Regen	Soils	
15	20	1063	153	CTL	Regen	Soils	
16	4	262	37	CTL	Regen		
17	64	1647	233	CTL	Regen		
18	116	4489	637	WT or CTL	Intermediate		
19	18	875	124	WT or CTL	Regen		
20	54	2045	290	CTL	Regen		
21	25	1296	186	WT or CTL	Regen		
22	72	3172	449	CTL	Intermediate		
23	25	786	111	CTL	Regen		
24	15	525	74	WT or CTL	Regen		
25	23	868	141	CTL	Regen		
26	34	2037	289	CTL	Regen		
27	55	1819	258	WT or CTL	Intermediate		
28	45	2202	312	WT or CTL	Regen		
29	20	683	98	WT or CTL	VFMT		
112	44	867	123	WT or CTL	VFMT		
115	13	250	35	WT or CTL	VFMT		
118	13	220	31	WT or CTL	VFMT		
172	61	1579	224	WT or CTL	VFMT		
173	74	1340	190	WT or CTL	VFMT		
183	91	1060	150	WT or CTL	VFMT		
18A	46	1955	277	Exclosure *	Intermediate		
18B	7	250	37	Ground-Lead *	Intermediate		
18C	9	487	69	Ground-Lead *	Intermediate		
18D	24	930	132	CTL	Intermediate		
20A	3	113	16	Ground-Lead *	Regen		
23A	13	401	57	Cable *	Regen		
1,096		38,460	5,025				
Ac.		tons	MBF				

* All Cable, Exclosure, or Ground-Lead harvest units may utilize Tethered Harvest System.

Map Number	Agency	Route Type	Route Name	Management Type	Visual Condition
181001	USFS	Trail	Trail	Decommission	USFS - Harvest
181002	USFS	Trail	Trail	Decommission	USFS - Harvest
181003	USFS	Trail	Trail	Decommission	USFS - Harvest
181004	USFS	Trail	Trail	Decommission	USFS - Harvest
181005	USFS	Trail	Trail	Decommission	USFS - Harvest
181006	USFS	Trail	Trail	Decommission	USFS - Harvest
181007	USFS	Trail	Trail	Decommission	USFS - Harvest
181008	USFS	Trail	Trail	Decommission	USFS - Harvest
181009	USFS	Trail	Trail	Decommission	USFS - Harvest
181010	USFS	Trail	Trail	Decommission	USFS - Harvest
181011	USFS	Trail	Trail	Decommission	USFS - Harvest
181012	USFS	Trail	Trail	Decommission	USFS - Harvest
181013	USFS	Trail	Trail	Decommission	USFS - Harvest
181014	USFS	Trail	Trail	Decommission	USFS - Harvest
181015	USFS	Trail	Trail	Decommission	USFS - Harvest
181016	USFS	Trail	Trail	Decommission	USFS - Harvest
181017	USFS	Trail	Trail	Decommission	USFS - Harvest
181018	USFS	Trail	Trail	Decommission	USFS - Harvest
181019	USFS	Trail	Trail	Decommission	USFS - Harvest
181020	USFS	Trail	Trail	Decommission	USFS - Harvest
181021	USFS	Trail	Trail	Decommission	USFS - Harvest
181022	USFS	Trail	Trail	Decommission	USFS - Harvest
181023	USFS	Trail	Trail	Decommission	USFS - Harvest
181024	USFS	Trail	Trail	Decommission	USFS - Harvest
181025	USFS	Trail	Trail	Decommission	USFS - Harvest
181026	USFS	Trail	Trail	Decommission	USFS - Harvest
181027	USFS	Trail	Trail	Decommission	USFS - Harvest
181028	USFS	Trail	Trail	Decommission	USFS - Harvest
181029	USFS	Trail	Trail	Decommission	USFS - Harvest
181030	USFS	Trail	Trail	Decommission	USFS - Harvest
181031	USFS	Trail	Trail	Decommission	USFS - Harvest
181032	USFS	Trail	Trail	Decommission	USFS - Harvest
181033	USFS	Trail	Trail	Decommission	USFS - Harvest
181034	USFS	Trail	Trail	Decommission	USFS - Harvest
181035	USFS	Trail	Trail	Decommission	USFS - Harvest
181036	USFS	Trail	Trail	Decommission	USFS - Harvest
181037	USFS	Trail	Trail	Decommission	USFS - Harvest
181038	USFS	Trail	Trail	Decommission	USFS - Harvest
181039	USFS	Trail	Trail	Decommission	USFS - Harvest
181040	USFS	Trail	Trail	Decommission	USFS - Harvest
181041	USFS	Trail	Trail	Decommission	USFS - Harvest
181042	USFS	Trail	Trail	Decommission	USFS - Harvest
181043	USFS	Trail	Trail	Decommission	USFS - Harvest
181044	USFS	Trail	Trail	Decommission	USFS - Harvest
181045	USFS	Trail	Trail	Decommission	USFS - Harvest
181046	USFS	Trail	Trail	Decommission	USFS - Harvest
181047	USFS	Trail	Trail	Decommission	USFS - Harvest
181048	USFS	Trail	Trail	Decommission	USFS - Harvest
181049	USFS	Trail	Trail	Decommission	USFS - Harvest
181050	USFS	Trail	Trail	Decommission	USFS - Harvest
181051	USFS	Trail	Trail	Decommission	USFS - Harvest
181052	USFS	Trail	Trail	Decommission	USFS - Harvest
181053	USFS	Trail	Trail	Decommission	USFS - Harvest
181054	USFS	Trail	Trail	Decommission	USFS - Harvest
181055	USFS	Trail	Trail	Decommission	USFS - Harvest
181056	USFS	Trail	Trail	Decommission	USFS - Harvest
181057	USFS	Trail	Trail	Decommission	USFS - Harvest
181058	USFS	Trail	Trail	Decommission	USFS - Harvest
181059	USFS	Trail	Trail	Decommission	USFS - Harvest
181060	USFS	Trail	Trail	Decommission	USFS - Harvest
181061	USFS	Trail	Trail	Decommission	USFS - Harvest
181062	USFS	Trail	Trail	Decommission	USFS - Harvest
181063	USFS	Trail	Trail	Decommission	USFS - Harvest
181064	USFS	Trail	Trail	Decommission	USFS - Harvest
181065	USFS	Trail	Trail	Decommission	USFS - Harvest
181066	USFS	Trail	Trail	Decommission	USFS - Harvest
181067	USFS	Trail	Trail	Decommission	USFS - Harvest
181068	USFS	Trail	Trail	Decommission	USFS - Harvest
181069	USFS	Trail	Trail	Decommission	USFS - Harvest
181070	USFS	Trail	Trail	Decommission	USFS - Harvest
181071	USFS	Trail	Trail	Decommission	USFS - Harvest
181072	USFS	Trail	Trail	Decommission	USFS - Harvest
181073	USFS	Trail	Trail	Decommission	USFS - Harvest
181074	USFS	Trail	Trail	Decommission	USFS - Harvest
181075	USFS	Trail	Trail	Decommission	USFS - Harvest
181076	USFS	Trail	Trail	Decommission	USFS - Harvest
181077	USFS	Trail	Trail	Decommission	USFS - Harvest
181078	USFS	Trail	Trail	Decommission	USFS - Harvest
181079	USFS	Trail	Trail	Decommission	USFS - Harvest
181080	USFS	Trail	Trail	Decommission	USFS - Harvest
181081	USFS	Trail	Trail	Decommission	USFS - Harvest
181082	USFS	Trail	Trail	Decommission	USFS - Harvest
181083	USFS	Trail	Trail	Decommission	USFS - Harvest
181084	USFS	Trail	Trail	Decommission	USFS - Harvest
181085	USFS	Trail	Trail	Decommission	USFS - Harvest
181086	USFS	Trail	Trail	Decommission	USFS - Harvest
181087	USFS	Trail	Trail	Decommission	USFS - Harvest
181088	USFS	Trail	Trail	Decommission	USFS - Harvest
181089	USFS	Trail	Trail	Decommission	USFS - Harvest
181090	USFS	Trail	Trail	Decommission	USFS - Harvest
181091	USFS	Trail	Trail	Decommission	USFS - Harvest
181092	USFS	Trail	Trail	Decommission	USFS - Harvest
181093	USFS	Trail	Trail	Decommission	USFS - Harvest
181094	USFS	Trail	Trail	Decommission	USFS - Harvest
181095	USFS	Trail	Trail	Decommission	USFS - Harvest
181096	USFS	Trail	Trail	Decommission	USFS - Harvest
181097	USFS	Trail	Trail	Decommission	USFS - Harvest
181098	USFS	Trail	Trail	Decommission	USFS - Harvest
181099	USFS	Trail	Trail	Decommission	USFS - Harvest
181100	USFS	Trail	Trail	Decommission	USFS - Harvest

