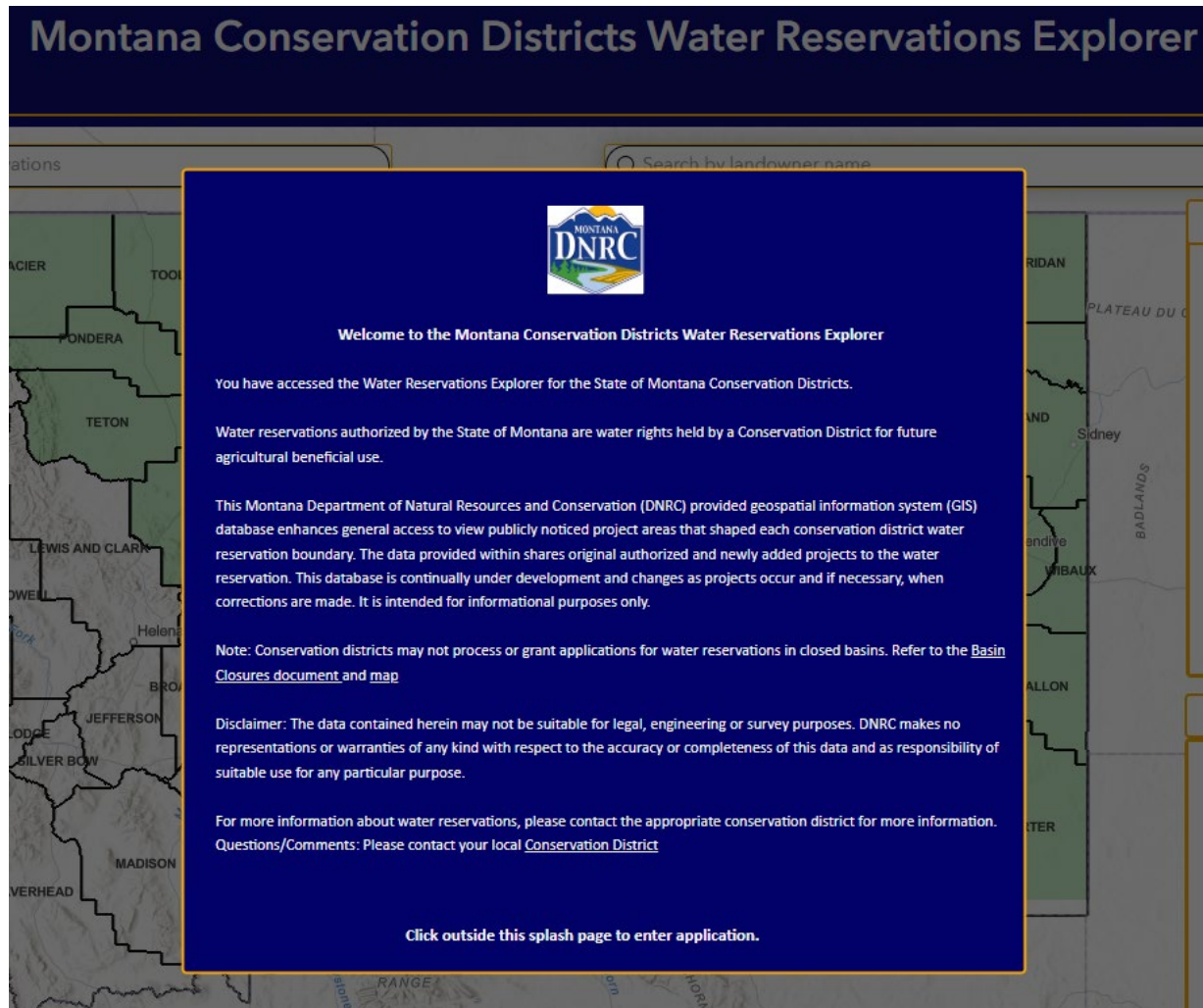


MONTANA CONSERVATION DISTRICTS WATER RESERVATIONS EXPLORER



A geospatial information system database to view publicly noticed project areas that shape each conservation district water reservation boundary.

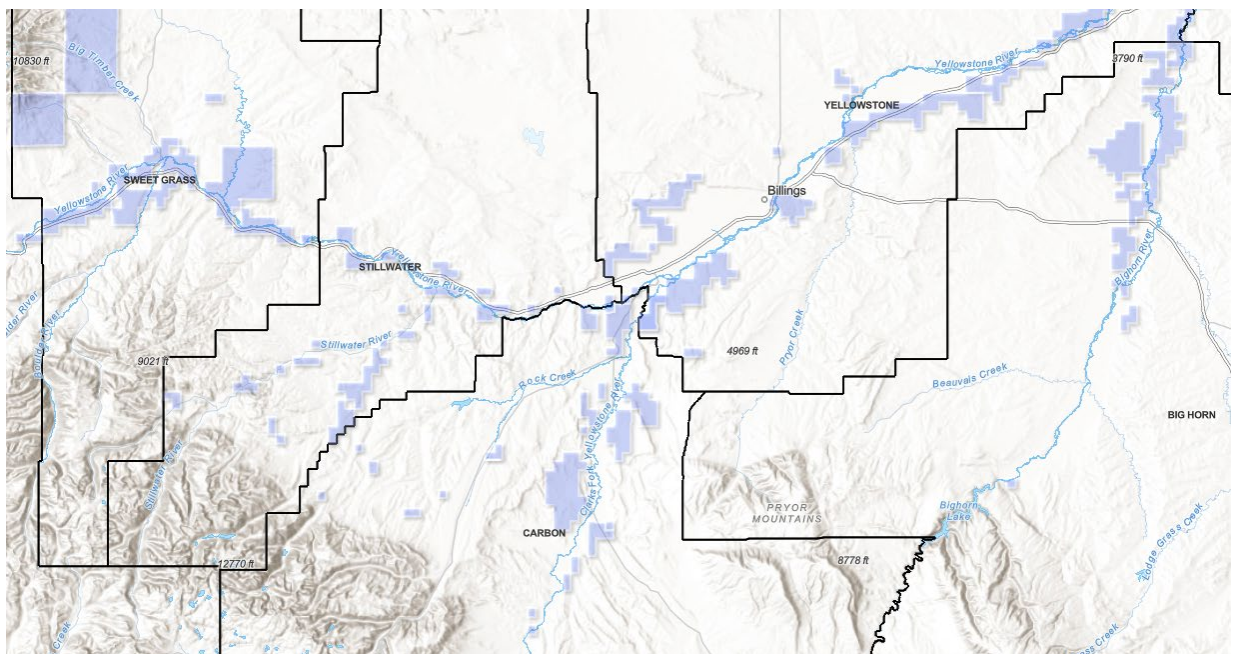
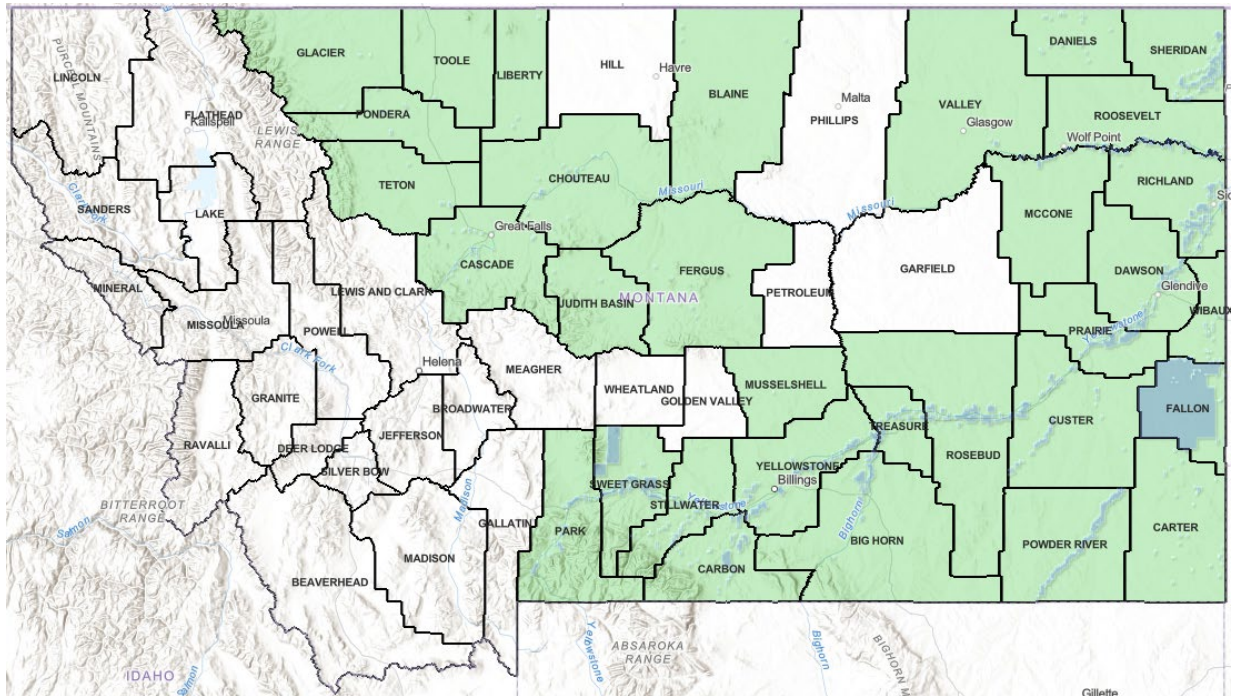
CLICK TO ENTER

Then scroll to access layers



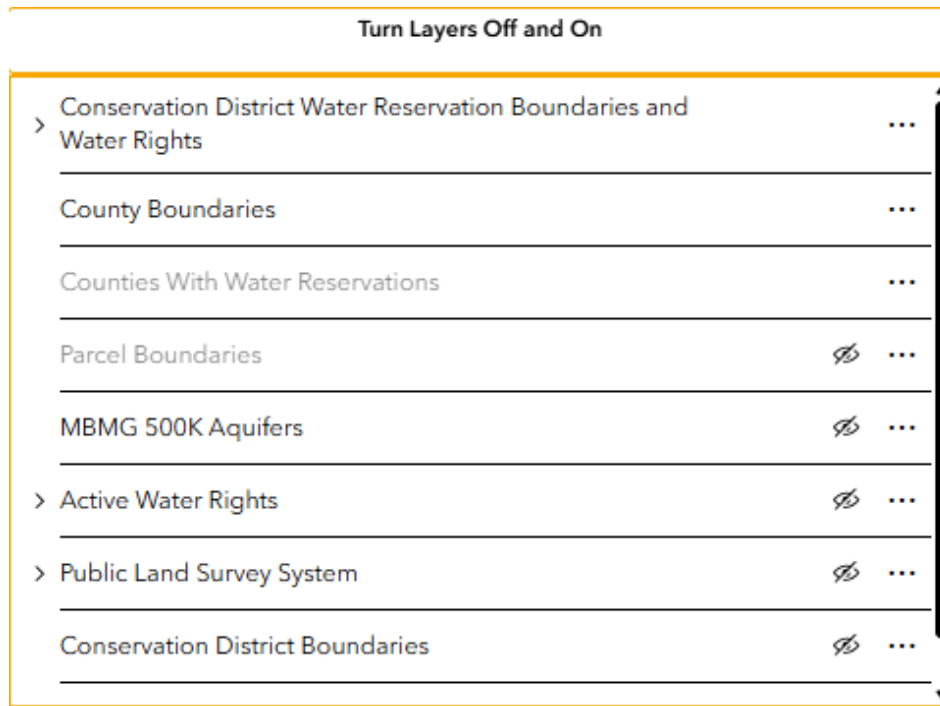
BASEMAP – WHITE TERRAIN WITH LABELS



Conservation Districts with Water Reservations in Green



PURPLE polygons	Public notice project areas that create the boundaries of the water reservation
BLACK borders	County boundaries
BLUE lines	Creeks, rivers, streams

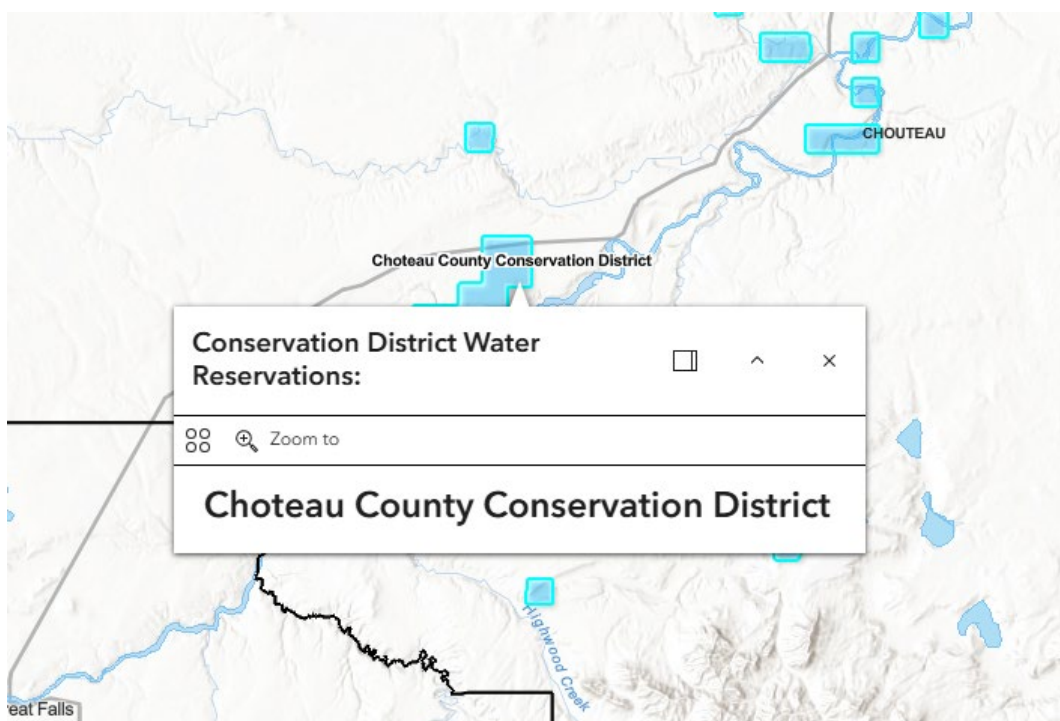
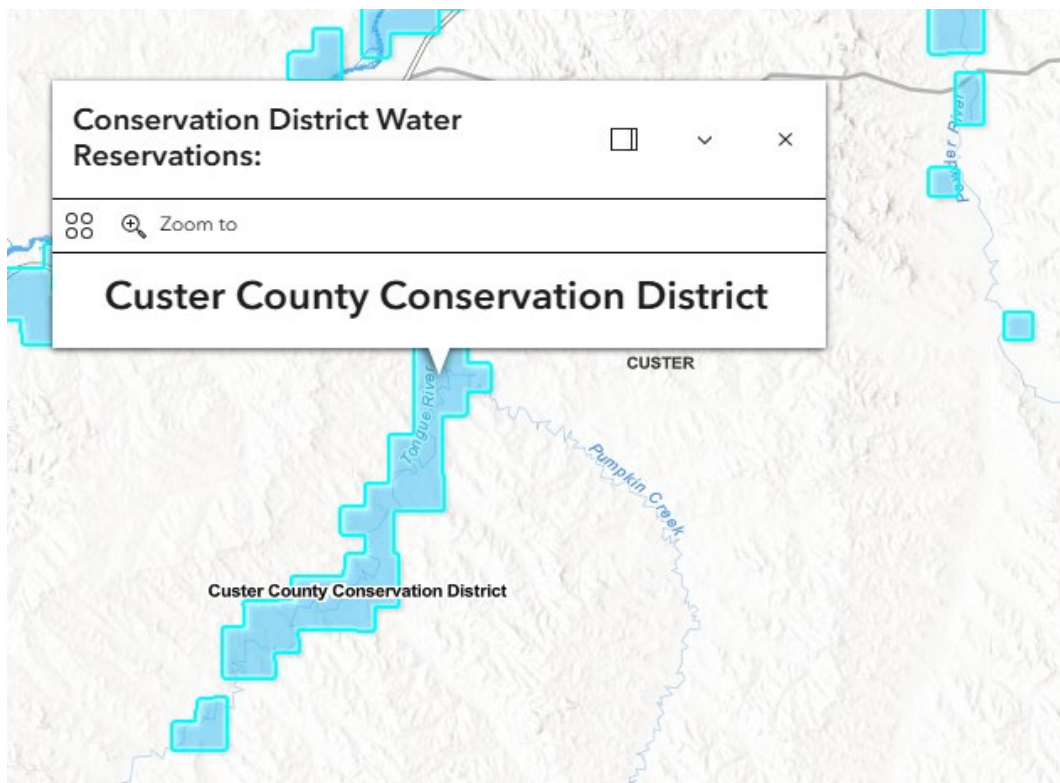
LAYERS



<ul style="list-style-type: none"> Conservation District Water Reservation Boundaries and Water Rights 	<ul style="list-style-type: none"> Existing Conservation District Record Water Rights Water Reservation Change Authorizations Conservation District Water Reservation Boundaries
County Boundaries	56 Montana counties
Counties with Water Reservations	May appear with gray font. Has scale dependencies – appears when you first open map
Parcel Boundaries	May appear with gray font. Has scale dependencies – data appears when you zoom into an area of the map
MBMG 500K Aquifers	Large file, slow to load: Principal aquifers of Montana
<ul style="list-style-type: none"> Active Water Rights 	<ul style="list-style-type: none"> Existing Points of Diversion Existing Places of Use
Public Land Survey System	A grid of township and sections using north-south line meridians, and east-west baselines dividing 6-mile square townships. Further subdivided into 36 one-square mile sections covering 640 acres each.
Conservation District Boundaries	Boundaries created by petition and vote to be included in a conservation district.
<div>  Active layer  Non-active layer </div>	

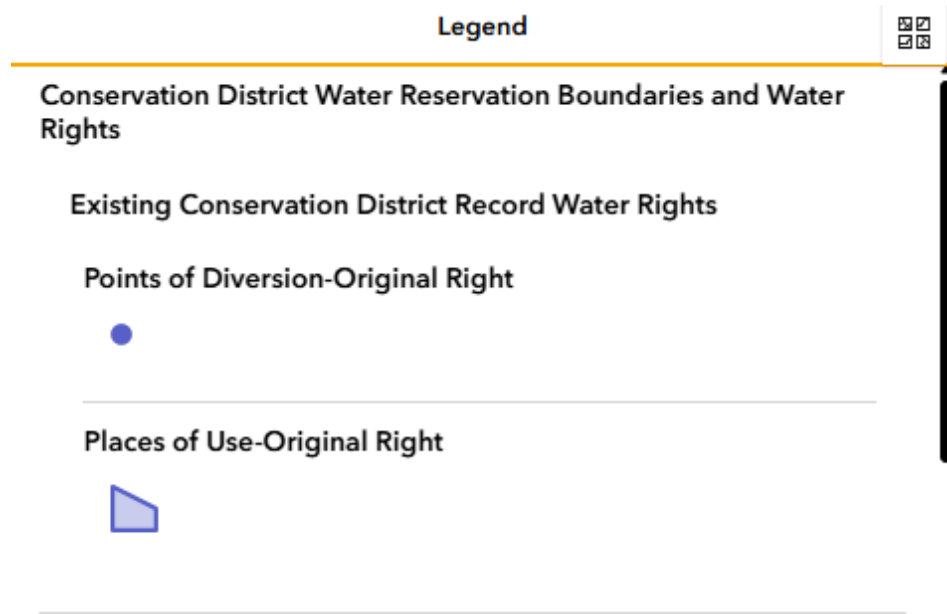
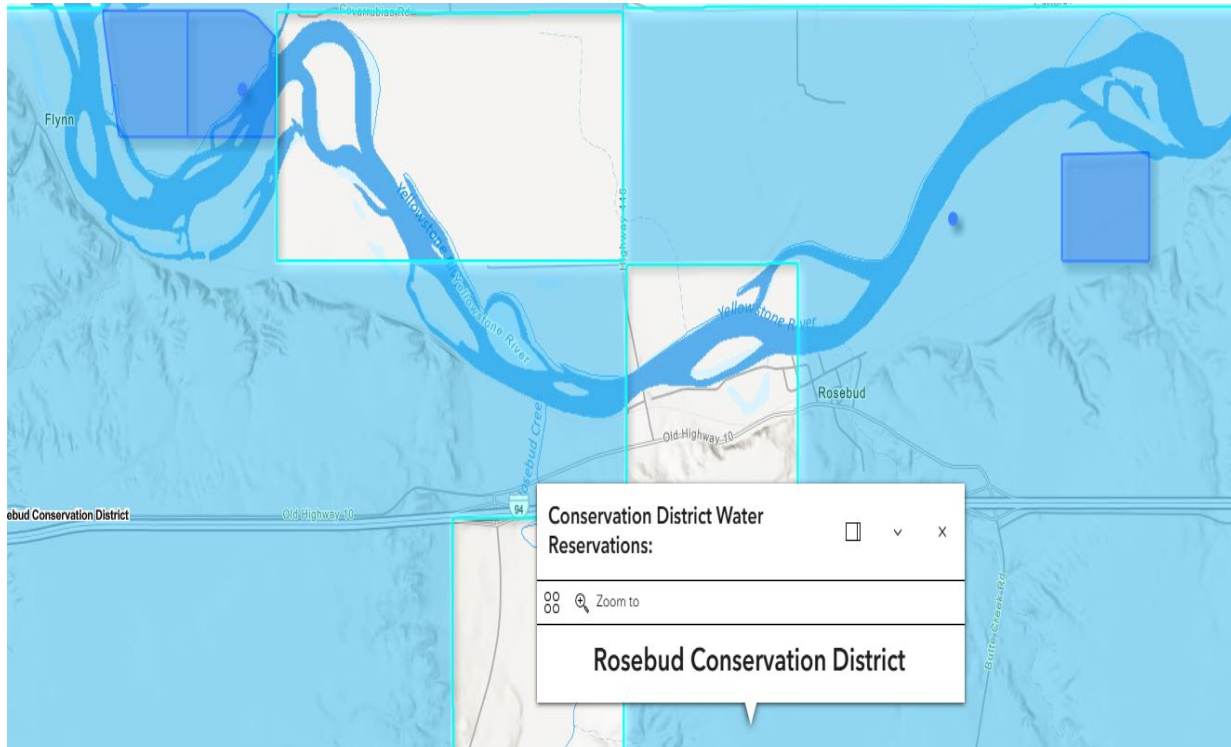
CONSERVATION DISTRICT WATER RESERVATION BOUNDARIES AND WATER RIGHTS

If you want to see the entire boundary by conservation district, click on any purple polygon in the county to highlight the water reservation.

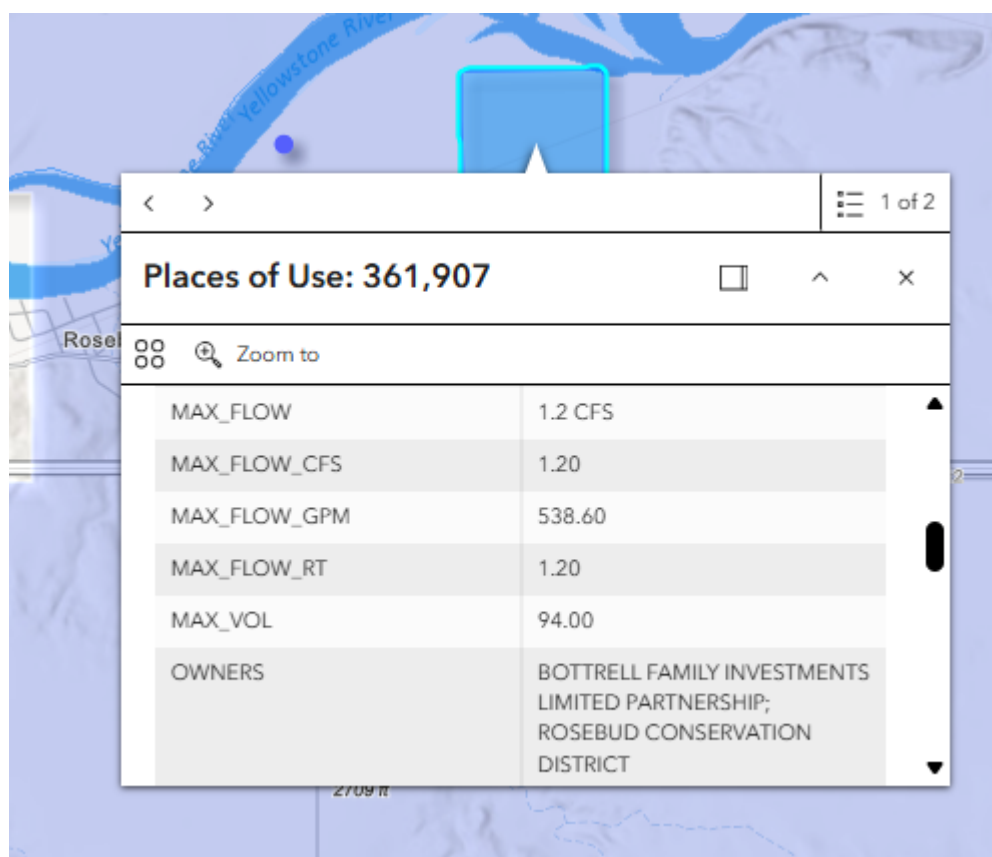
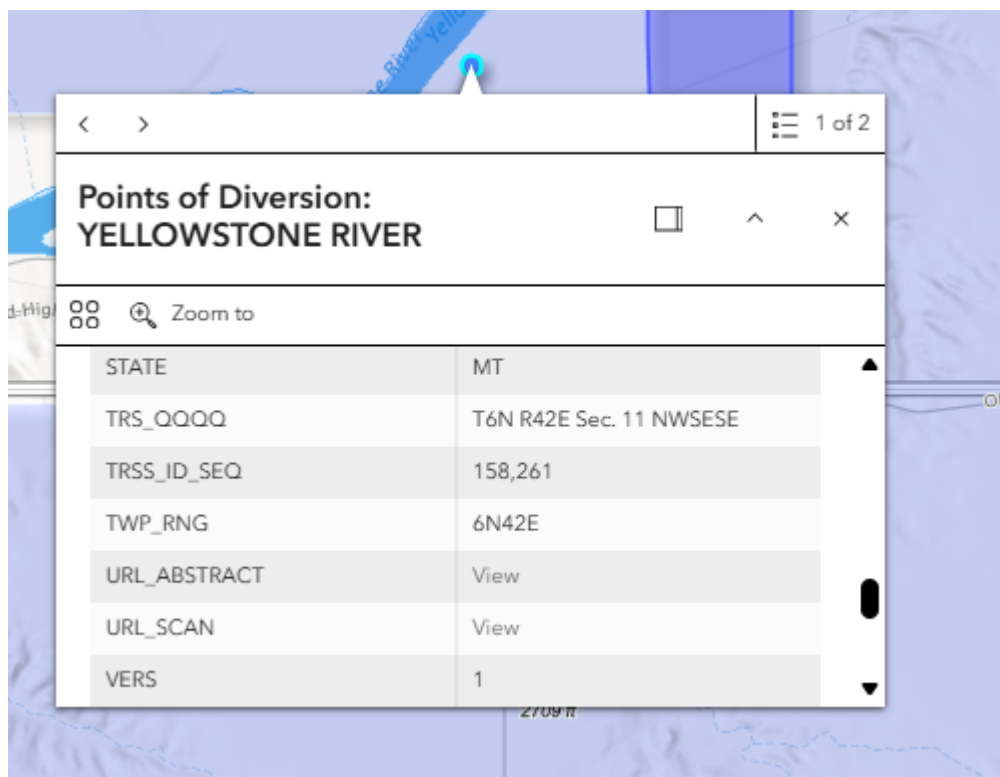


ORIGINAL RIGHT IN THE ORIGINAL PUBLIC NOTICE BOUNDARIES

To view an original right within the water reservation boundary, scroll to a project of interest and locate the BLUE polygon and dot. This was authorized within the original publicly noticed project area and did not require a change authorization.



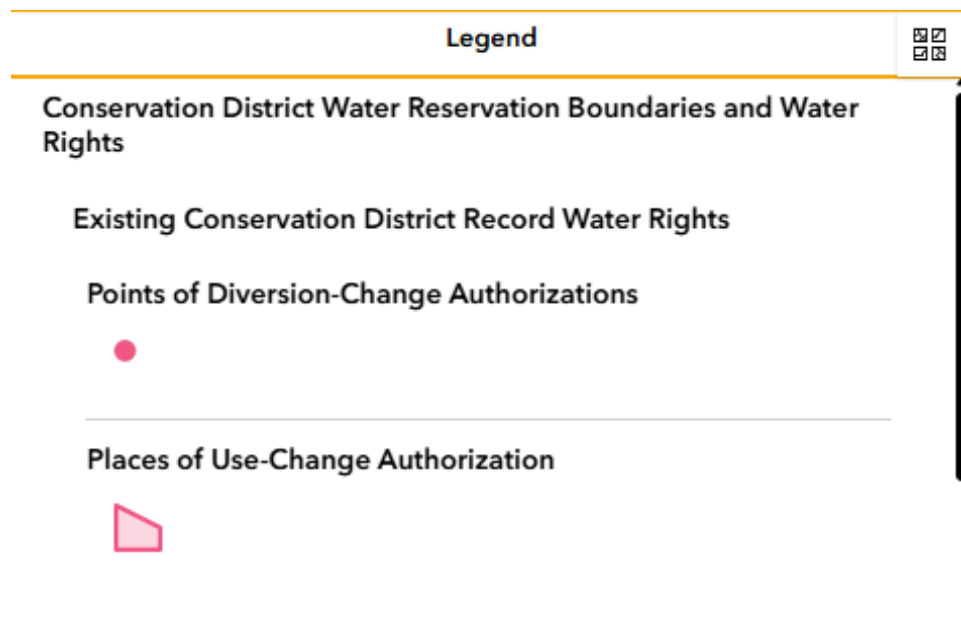
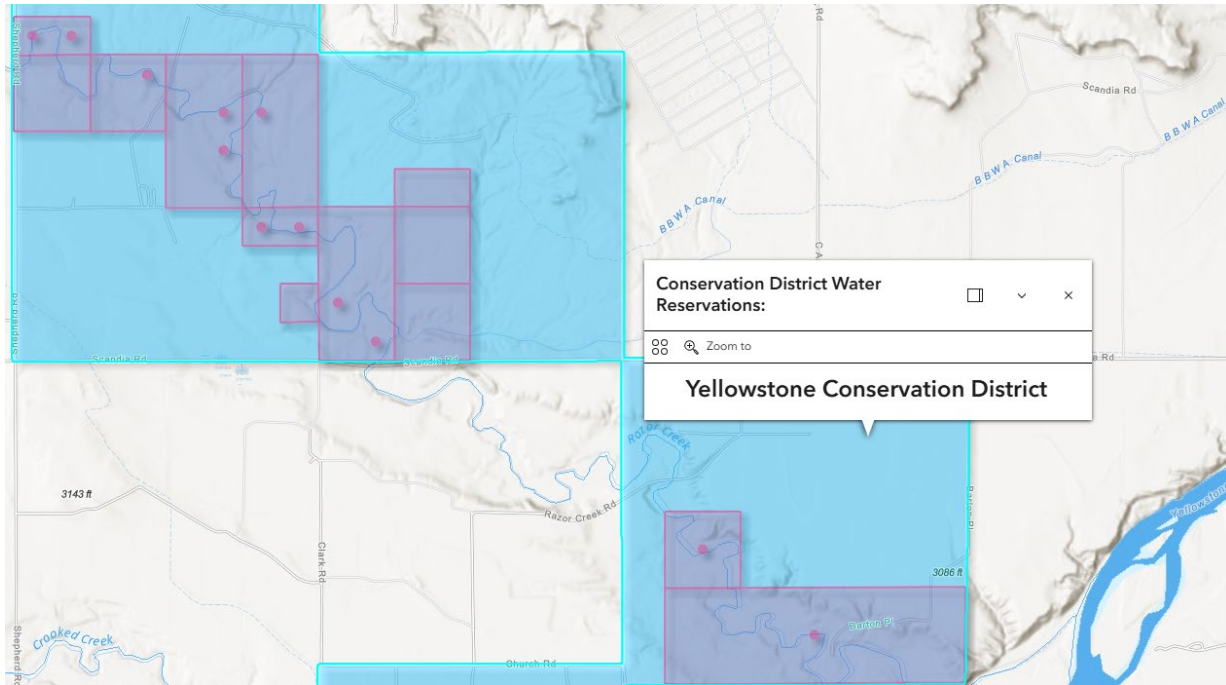
Click on the Blue dot to view the point of diversion. Scroll down URL Abstract to view and print the General Abstract. URL Scan will provide a link to WRIS database documents.



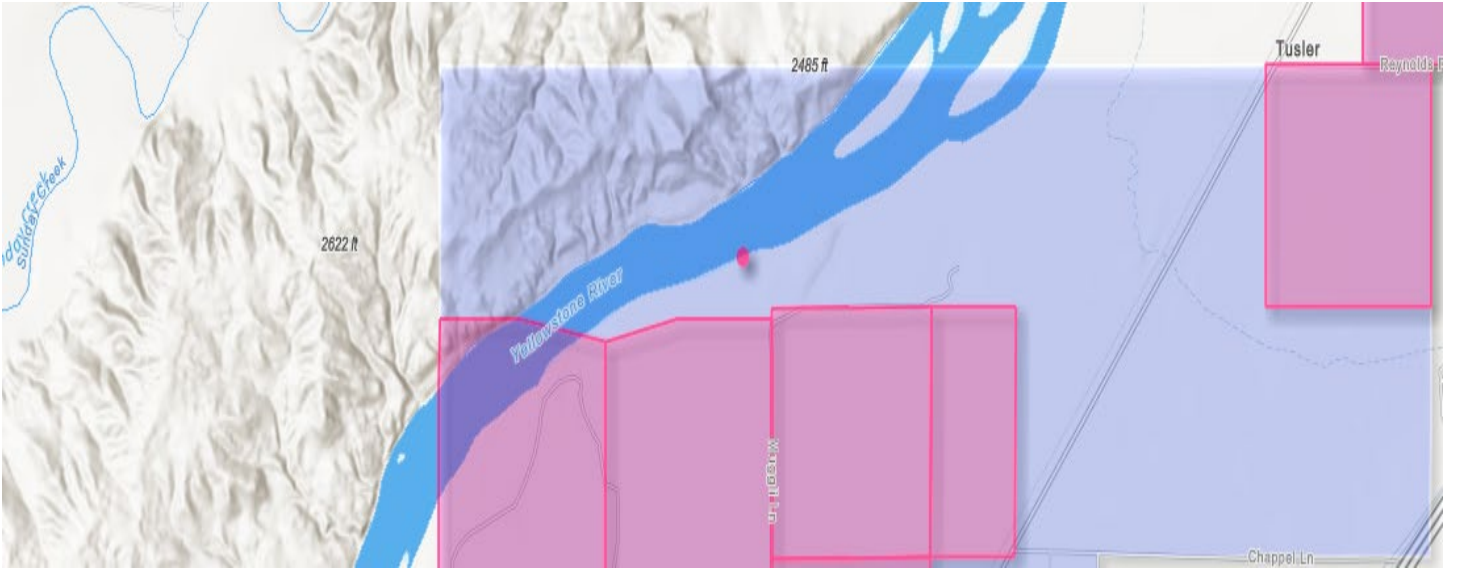
Click on the Blue polygon to view the place of use. Scroll down to view record details or print General Abstract. (this may be the same project as the point of diversion abstract from the example above)

CHANGE RIGHT IN THE ORIGINAL PUBLIC NOTICE BOUNDARIES

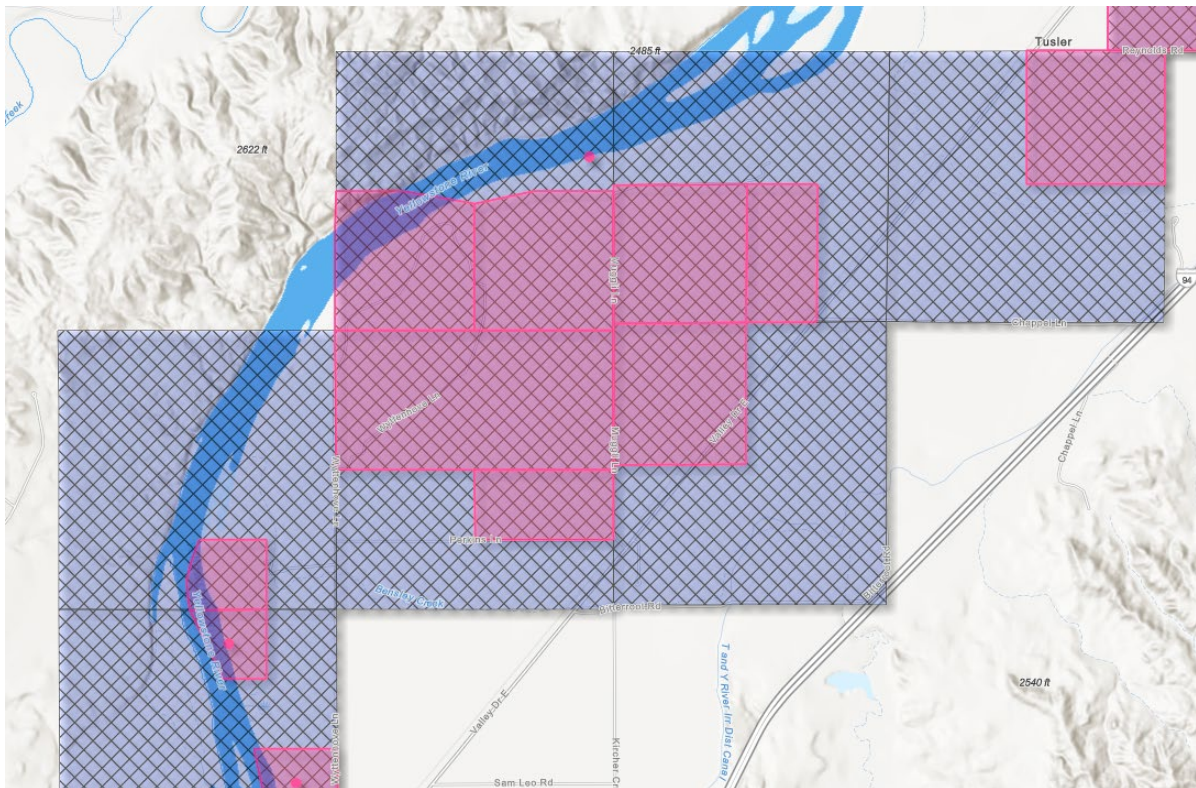
To view a change right within the water reservation boundary, scroll to a project of interest and locate the PINK polygon and dot. This change was authorized to add a project's point of diversion or place of use to the original publicly noticed reservation boundary.



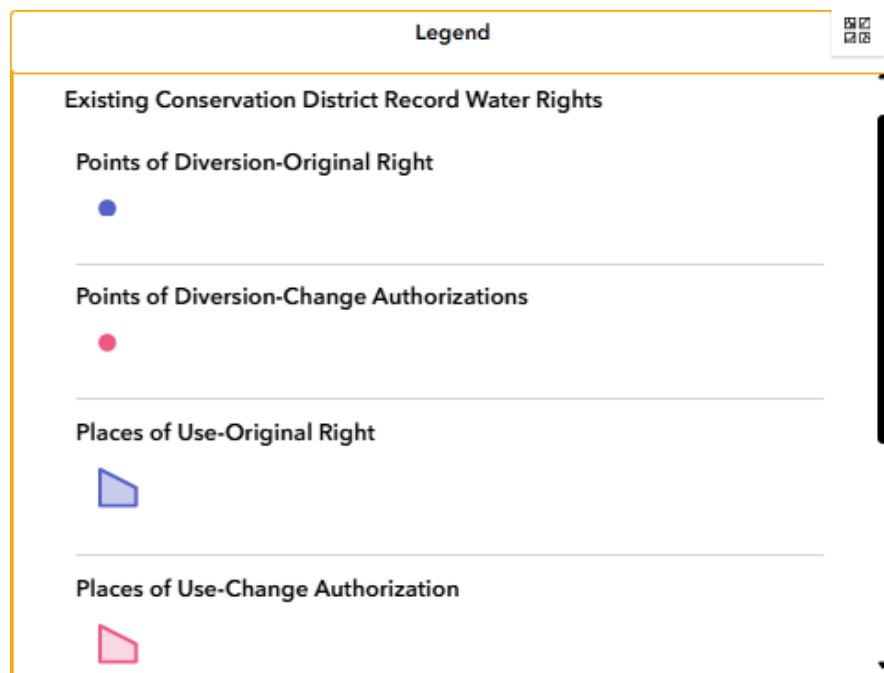
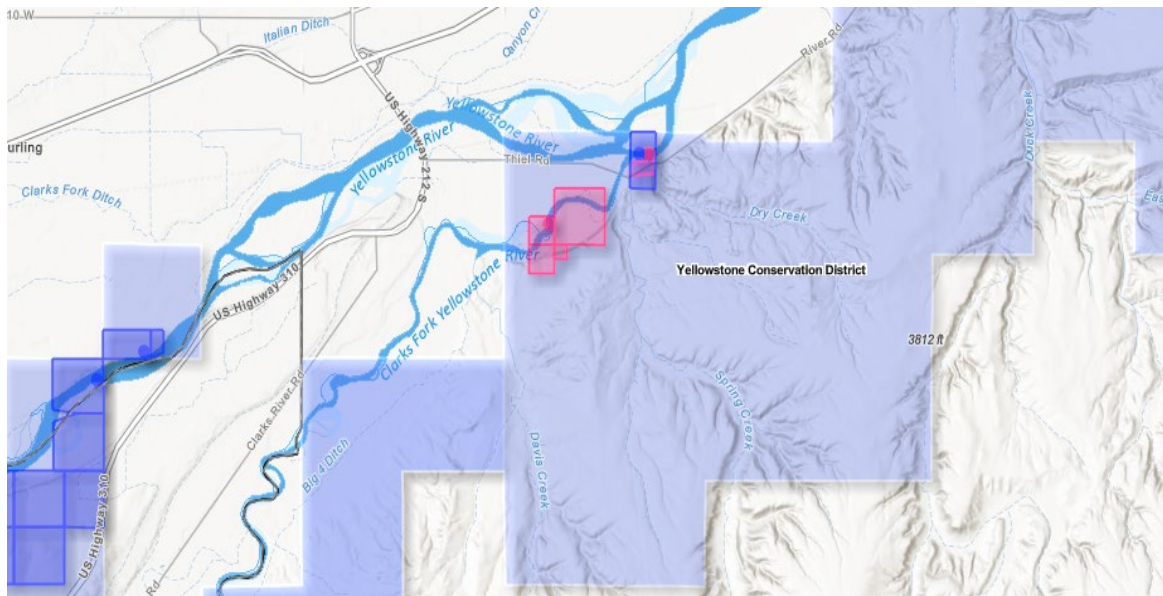
Without the WR Change Authorization layer turned on, the newly added acres only appear as slightly dark purple area in the reservation boundary. The pink polygon and dot are also associated with the change authorization.



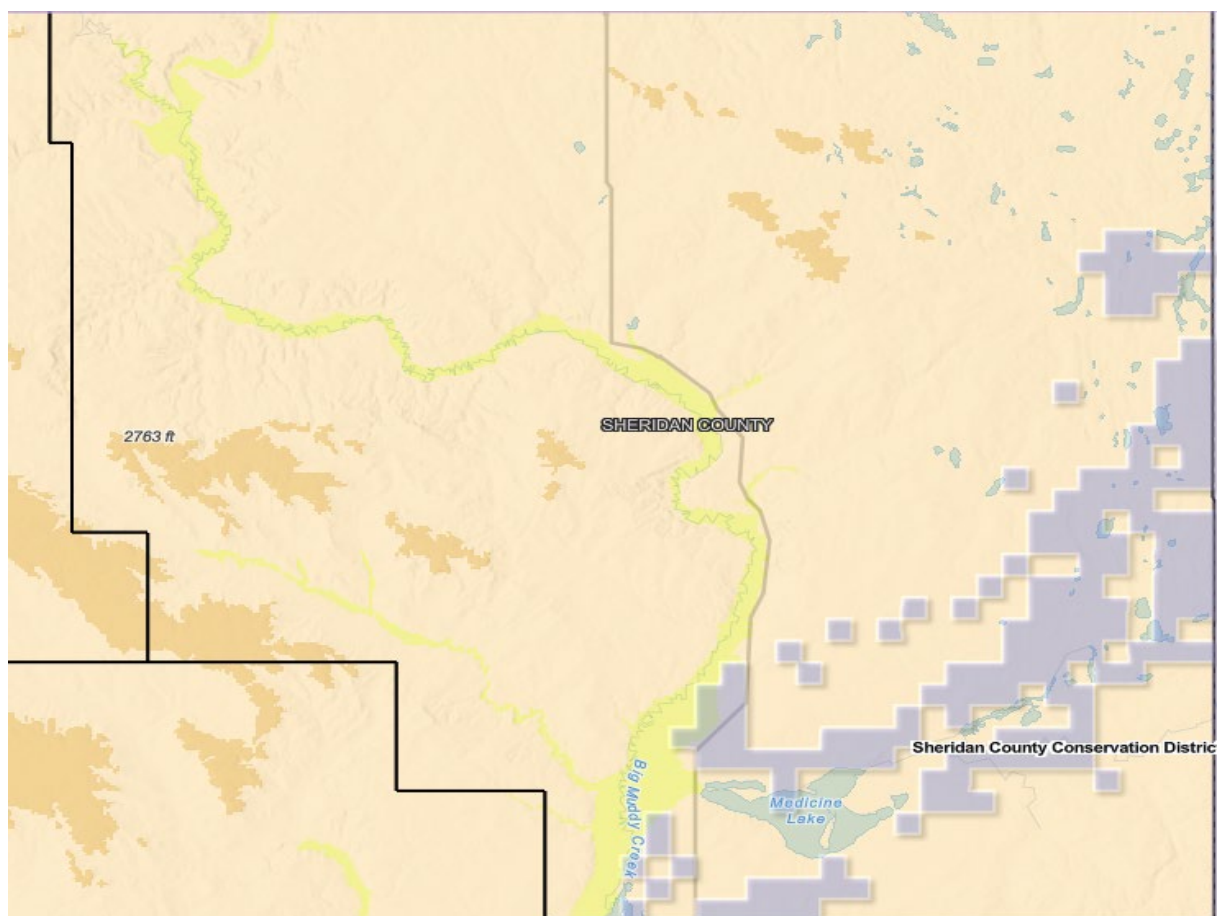
If the WR Change Authorizations layer is turned on, those same areas become cross hatched and easier to see.



By turning layers off and on in a large landscape, both original and change attributes will show up as project areas.



MBMG 500K AQUIFERS

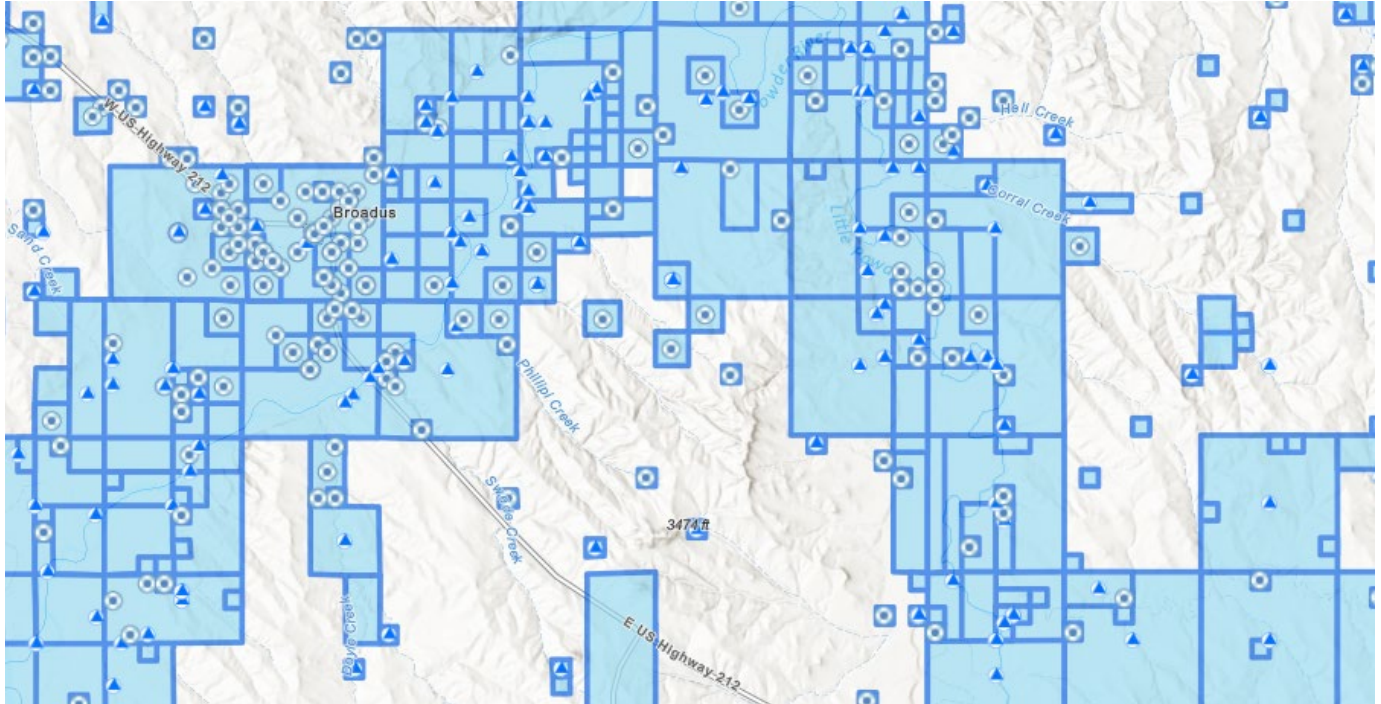


Legend

MBMG 500K Aquifers

-  Eagle Aquifer
-  Fox Hills-Hell Creek Aquifer
-  Judith River Aquifer
-  Kootenai Aquifer
-  Livingston Aquifer
-  Cretaceous Shales Confining Unit
-  Sedimentary Rock Aquifer
-  Madison Aquifer
-  Lower Paleozoic Aquifer
-  Quaternary Basin Fill and Alluvial Aquifers

ACTIVE WATER RIGHTS



Legend

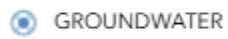


County Boundaries



Active Water Rights

Existing Points of Diversion



GROUNDWATER

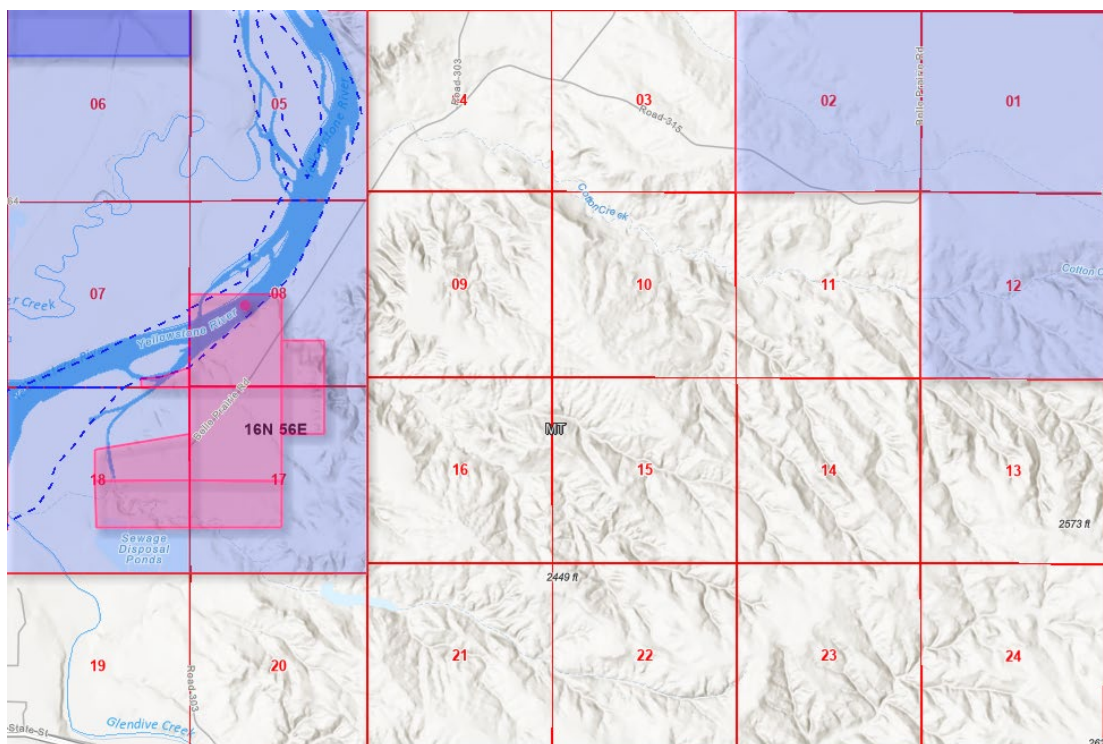
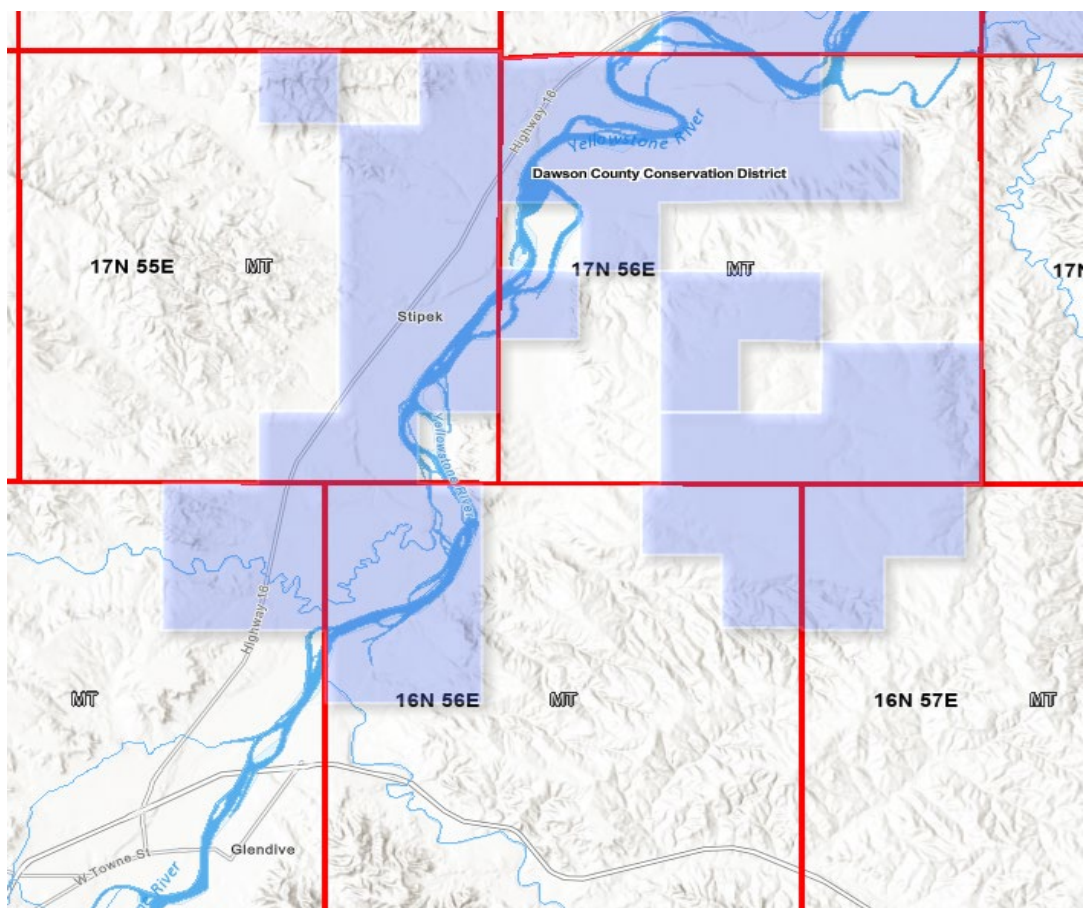


SURFACE

Existing Places of Use



PUBLIC LAND SURVEY SYSTEM



PARCEL BOUNDARIES

