



**Project Notification  
Union Timber Blowdown Salvage  
03/05/2026**

The Montana Department of Natural Resources and Conservation (DNRC), **Missoula** Unit is proposing to harvest timber on the following state-owned parcel:

**Section 36, T13N, R15W**

The Union Timber Blowdown Salvage is located approximately 6.5 aerial miles from Potomac, MT. The project is located within the Washoe Creek drainage.

The primary objectives for the project are:

- Generate revenue for the Common Schools Trust
- Salvage windthrown timber from the Dec. 2025 major wind event
- Reduce fuel loading.

The project will include a salvage harvest of an estimated 90 MBF (thousand board feet) from within the approximately 173-acre project area. The proposed harvest would contribute to the DNRC's sustained yield as mandated by state statute 77-5-222.

The DNRC, Trust Land Management Division, adopted categorical exclusions for certain forest management activities conducted on state forested trust lands (ARM 36.11.447). "Categorical Exclusion" refers to a type of action that does not individually, collectively, or cumulatively require an EA or EIS, pursuant to MEPA (MCA 75-1-101 through 324) and DNRC Administrative Procedures for MEPA (ARM 36.2.521 through 543), unless extraordinary circumstances occur (ARM 36.2.522(5)).

Road maintenance may occur on approximately 1.5 miles of existing access roads to maintain the function and drainage of the haul route. No new construction will occur. No additional activities will occur under this project.

In preparation for this project, specialists such as wildlife biologists, hydrologists, soil scientists, and archeologists have been consulted.

Clark Cederberg  
Management Forester  
Clark.cederberg@mt.gov

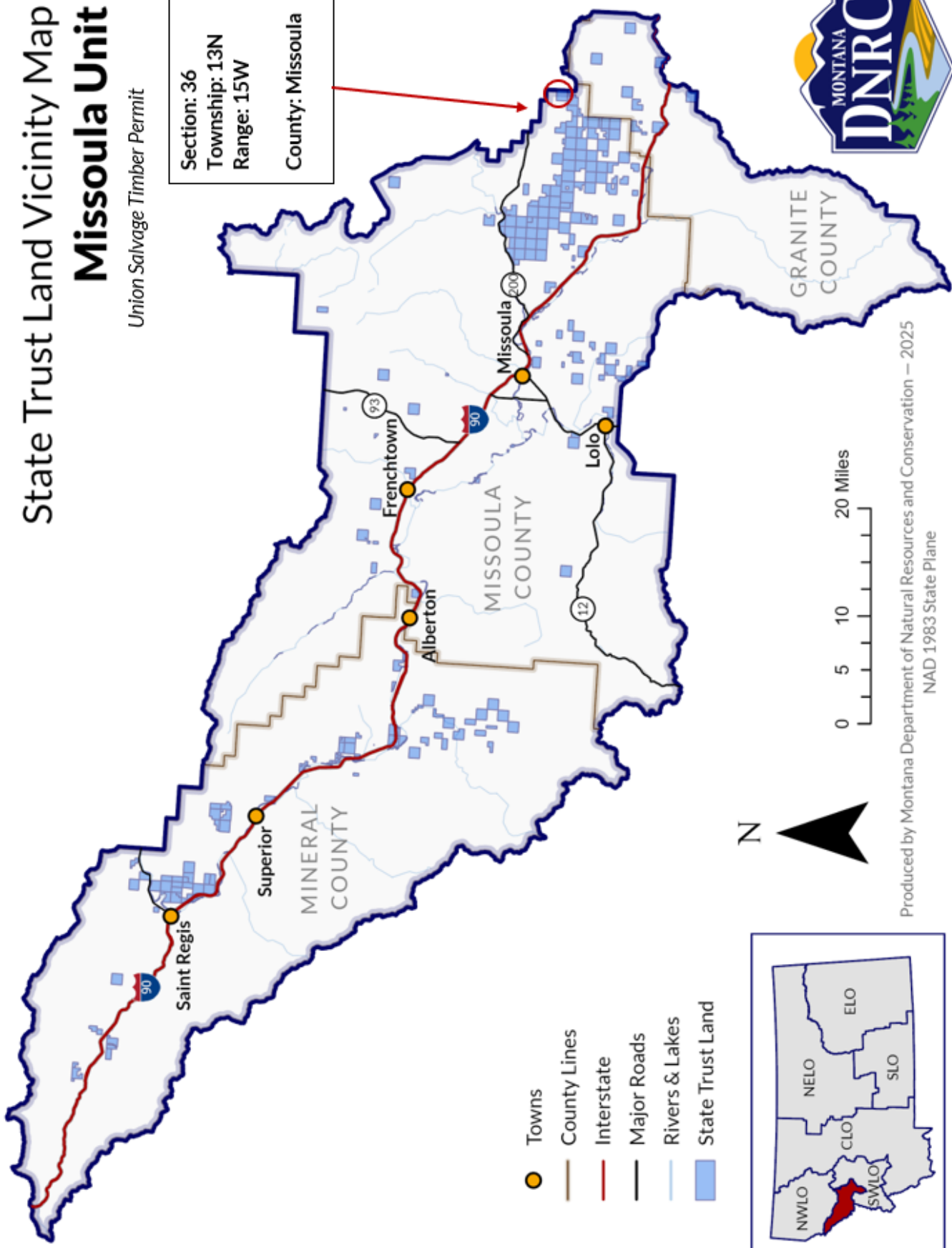


# State Trust Land Vicinity Map

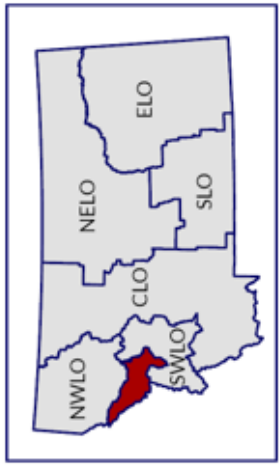
## Missoula Unit

Union Salvage Timber Permit

Section: 36  
 Township: 13N  
 Range: 15W  
 County: Missoula



- Towns
- County Lines
- Interstate
- Major Roads
- Rivers & Lakes
- State Trust Land



Produced by Montana Department of Natural Resources and Conservation — 2025  
 NAD 1983 State Plane