



**Project Notification  
Tarkio Flats Salvage Timber Permit  
03/05/2026**

The Montana Department of Natural Resources and Conservation (DNRC), **Missoula** Unit is proposing to harvest timber on the following state-owned parcel:

**T15N R25W Sec 35 and 36  
T14N R25W Sec 02**

The Tarkio Flats Salvage Timber Permit Project is located approximately 16 aerial miles West of Alberton, MT, along the I-90 corridor.

The primary objectives for the project are:

- Generate revenue for the Common Schools and MSU Eastern/UM Western Trusts
- Improve the health and vigor of forested stands by reducing basal area, targeting low vigor, diseased, and poor form Douglas-fir and Ponderosa Pine for removal.
- Salvage windthrown (blowdown) timber from the most recent major wind event
- Reduce fuel loading and the likelihood of a stand-replacing fire.

The project will include harvesting an estimated 400 MBF (thousand board feet) from the approximately 76-acre project area using a combination of salvage and individual-tree selection silvicultural prescriptions. The proposed harvest would contribute to the DNRC's sustained yield as mandated by state statute 77-5-222.

The DNRC, Trust Land Management Division, adopted categorical exclusions for certain forest management activities conducted on state forested trust lands (ARM 36.11.447). "Categorical Exclusion" refers to a type of action that does not individually, collectively, or cumulatively require an EA or EIS, pursuant to MEPA (MCA 75-1-101 through 324) and DNRC Administrative Procedures for MEPA (ARM 36.2.521 through 543), unless extraordinary circumstances occur (ARM 36.2.522(5)).

Road maintenance may occur on approximately 3 miles of existing access roads to maintain the function and drainage of the haul route. New temporary road construction may occur, not to exceed 0.5 miles, in order to access timber.

In preparation for this project, specialists such as wildlife biologists, hydrologists, soil scientists, and archeologists will be consulted.

**Department of Natural Resources and Conservation  
Attn: Clark Cederberg  
Missoula Unit  
3206 Maverick Lane Missoula, MT 59804  
[Clark.cederberg@mt.gov](mailto:Clark.cederberg@mt.gov)**

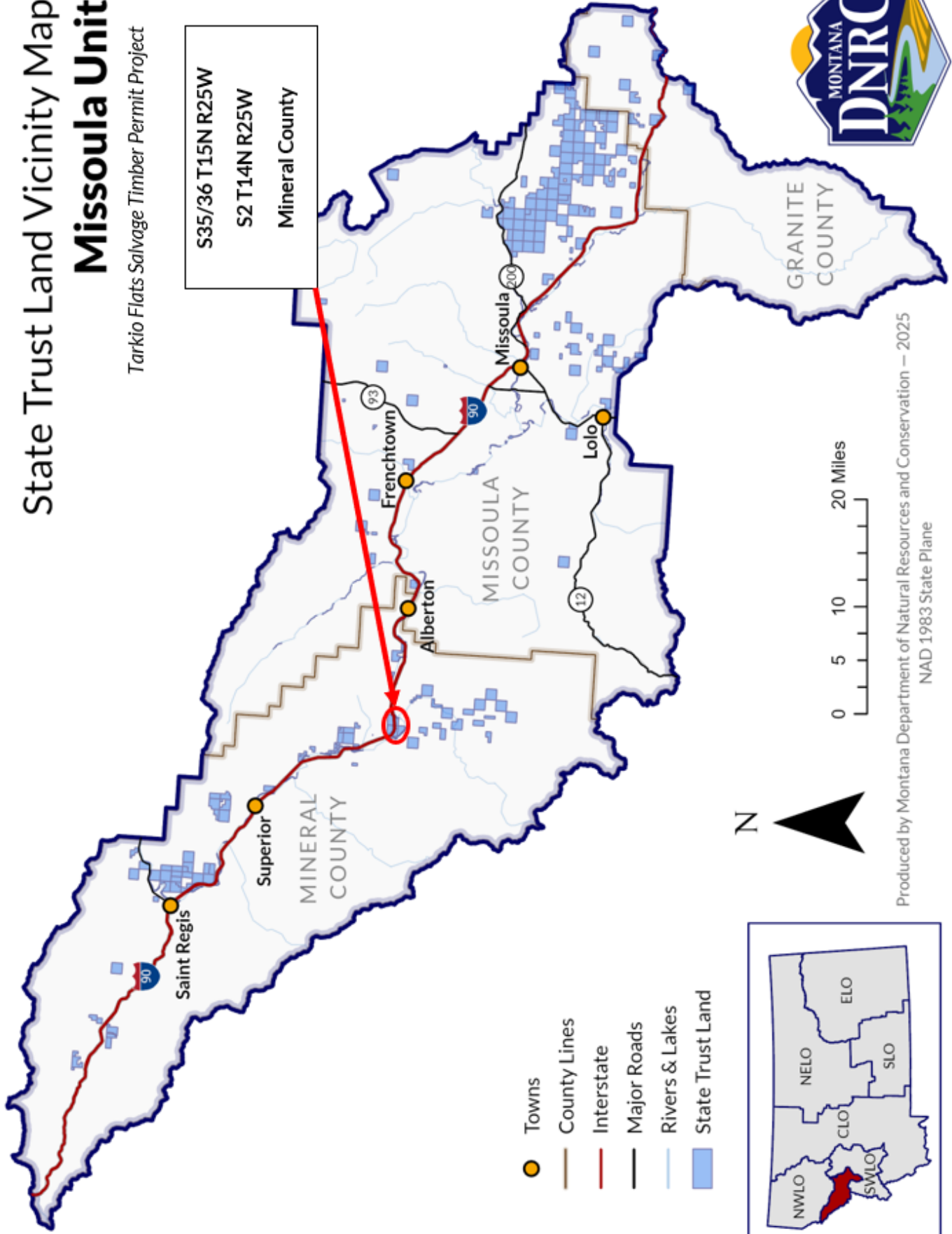


# State Trust Land Vicinity Map

## Missoula Unit

Tarkio Flats Salvage Timber Permit Project

S35/36 T15N R25W  
S2 T14N R25W  
Mineral County



- Towns
- County Lines
- Interstate
- Major Roads
- Rivers & Lakes
- State Trust Land



Produced by Montana Department of Natural Resources and Conservation – 2025  
NAD 1983 State Plane