



**Initial Proposal  
Luke Mountain 2 Salvage  
6/17/2026**

The land involved in this proposed project is held in trust by the State of Montana (Enabling Act of February 22, 1889; 1972 Montana Constitution, Article X, Section 11). The Board of Land Commissioners and the DNRC are required by law to administer these trust lands to produce the largest measure of reasonable and legitimate return over the long run for the beneficiary institutions (Section 77-1-202, MCA).

The Montana Department of Natural Resources and Conservation (DNRC), Anaconda Unit is proposing to salvage timber on the following state-owned parcel:

**T10N, R9W, Section 16**

The Luke Mountain 2 Salvage Timber Sale is located approximately 7 miles west of Avon, MT (See attached Map).

The primary objective of the proposed action is to:

- Salvage wind-thrown Douglas-fir, reduce Douglas-fir beetle occurrence, and generate revenue for the common school trust fund.

The proposed actions would salvage up to approximately 1 million board feet (MMbf) of timber within a 640-acre project area. The anticipated activities of the project would be expected to last up to one year. The proposed actions would contribute to the DNRC's sustained yield as mandated by state statute 77-5-222.

No new temporary or permanent roads would be built as part of the project. Other activities associated with this timber sale may include noxious weed management, tree planting, and slash pile burning.

The DNRC is in the scoping phase of the project environmental assessment, so all volumes, acreages and road distances are preliminary estimates. In preparation for this project, specialists such as wildlife biologists, hydrologists, soil scientists, and archeologists may be consulted.

The Montana DNRC invites written comments and suggestions concerning this proposal. Please respond by **July 15, 2026**, to:

Department of Natural Resources and Conservation  
Sean Steinebach  
Anaconda Unit  
1300 Maguire Road  
Anaconda, MT 59711  
406-563-6078  
[sean.steinebach@mt.gov](mailto:sean.steinebach@mt.gov)

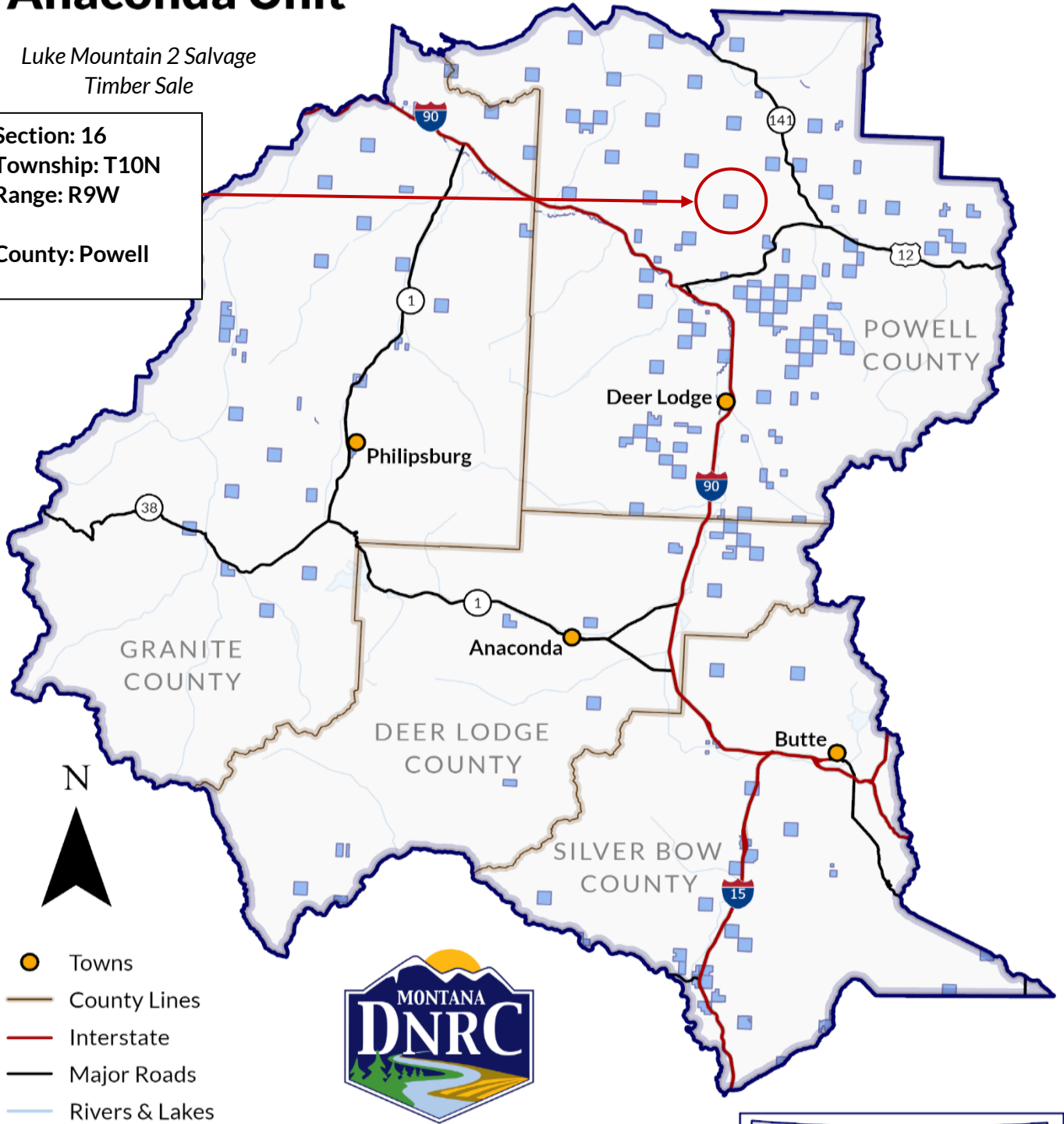


# State Trust Land Vicinity Map

## Anaconda Unit

Luke Mountain 2 Salvage  
Timber Sale

Section: 16  
Township: T10N  
Range: R9W  
County: Powell



- Towns
- County Lines
- Interstate
- Major Roads
- Rivers & Lakes
- State Trust Land

