



**Initial Proposal
Gopher Land Timber Sale
May 1, 2026**

The lands involved in this proposed project are held in trust by the State of Montana. (Enabling Act of February 22, 1889; 1972 Montana Constitution, Article X, Section 11). The Board of Land Commissioners and the DNRC are required by law to administer these trust lands to produce the largest measure of reasonable and legitimate return over the long run for the beneficiary institutions (Section 77-1-202, MCA).

The Montana Department of Natural Resources and Conservation (DNRC), **Libby** Unit is proposing to harvest timber on the following state-owned parcels:

**Section 36, T32N, R29W
Section 14, T31N, R29W**

The Gopher Land parcels are located approximately 28 miles northeast of Libby, MT within the Warland Creek and Kootenai River drainages.

Gopher Land Timber Sale would harvest approximately 4-5 million board feet on 618 acres. Ground based tractor logging systems would be utilized on approximately 350 acres and cable-based logging systems would be utilized on remaining acres. Approximately 2 miles of new road would be constructed/reconstructed, approximately 11 miles of existing road would be maintained.

Silvicultural harvest treatments would include shelterwood, seed tree, or commercial thinning. The proposed harvest would contribute to the DNRC's sustained yield as mandated by state statute 77-5-222.

A brief description of the proposed projects is listed below:

- Sell approximately 4-5 MMBF of timber to generate revenue for the Common Schools and Public Buildings Trusts.
- Promote the development of historic stand conditions while improving stand health and vigor.
- Reduce fuels and the related risk for wildfire

Follow-up treatments could include machine piling and scarification, slash burning, weed spraying, hand planting tree seedlings, and pre-commercial thinning. Harvest activities could begin in 2027, and length of harvest would be approximately 3-4 years.

The DNRC is in the scoping phase of the project environmental assessment so all volumes, acreages and road distances are preliminary estimates. In preparation for this project, specialists such as wildlife biologists, hydrologists, soil scientists, and archeologists may be consulted.

The Montana DNRC invites written comments and suggestions concerning this proposal. Please respond by **5:00 PM on June 1, 2026** to:

Department of Natural Resources and Conservation
Attn: **Jessica Mannion**
Libby Unit
177 State Lands Office Rd
Libby, MT 59923
E-Mail: Jessica.Mannion@mt.gov Phone: (406) 283-3529

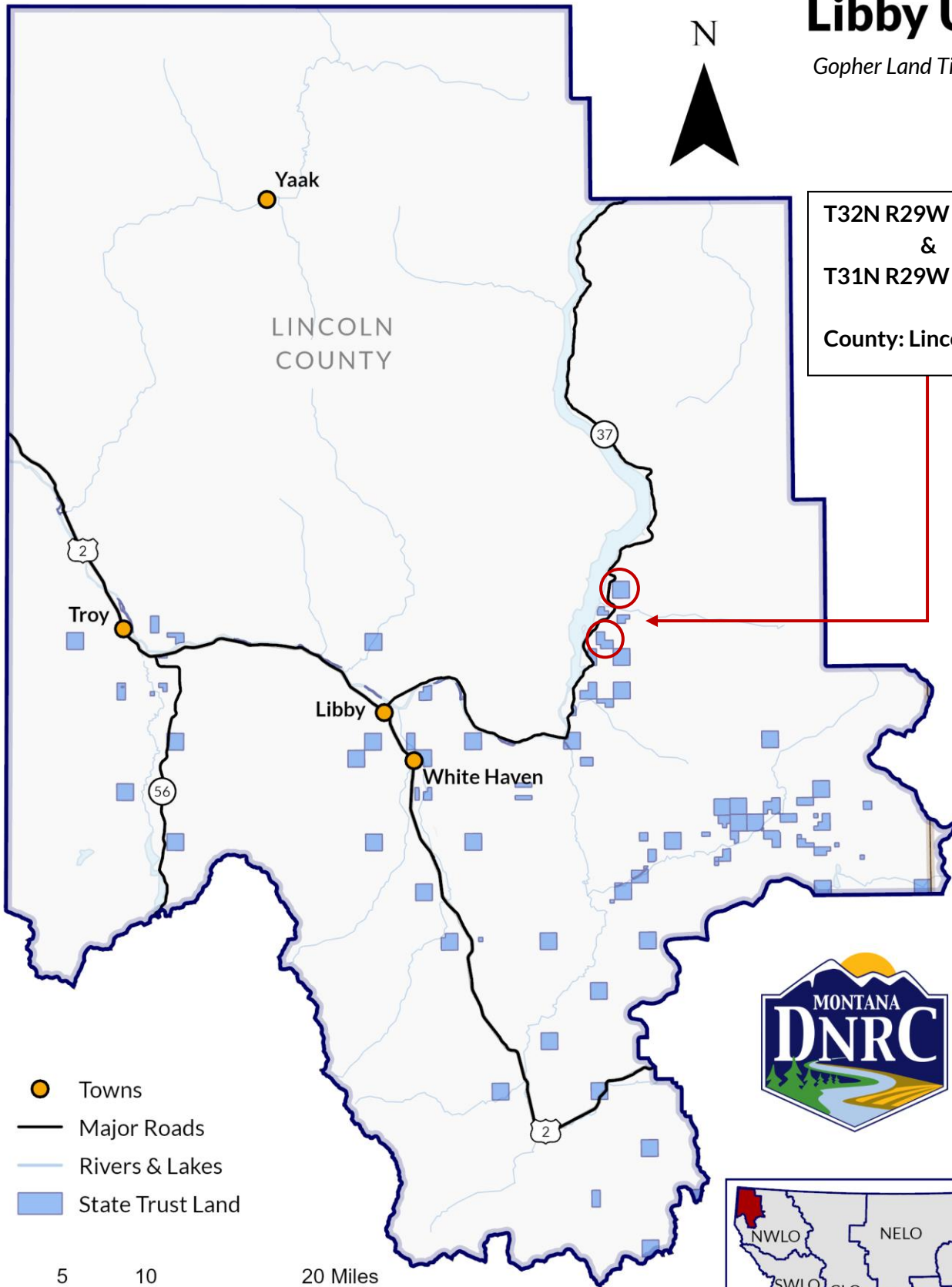


State Trust Land Vicinity Map

Libby Unit

Gopher Land Timber Sale

N



T32N R29W Sec 36
&
T31N R29W Sec 14

County: Lincoln

- Towns
- Major Roads
- Rivers & Lakes
- State Trust Land

0 5 10 20 Miles

Produced by Montana Department of Natural Resources and Conservation – 2025
NAD 1983 State Plane

