



**Initial Proposal
Big Stryke Timber Sale Project
May 11, 2026**

The lands involved in this proposed project are held in trust by the State of Montana. (Enabling Act of February 22, 1889; 1972 Montana Constitution, Article X, Section 11). The Board of Land Commissioners and the DNRC are required by law to administer these trust lands to produce the largest measure of reasonable and legitimate return over the long run for the beneficiary institutions (Section 77-1-202, MCA).

The Montana Department of Natural Resources and Conservation (DNRC), Stillwater Unit is proposing forest management treatments on the following state owned parcels:

T33N R23W Sections 14-16 & 21-24

The proposed Big Stryke Timber Sale Project is located approximately 10 miles northeast of Olney, Montana in the Stillwater Main Block, in Flathead County. The proposed project would treat stands in all age classes.

The primary objectives of the proposed project are:

- The proposed harvest of 4-8 million board feet (MMbf) would contribute to the DNRC's sustained yield as mandated by the state statute 77-5-222 to sell approximately 60 MMbf of timber annually and continue to produce revenue over time. The revenue generated from this proposal would benefit Common Schools.
- Promote biodiversity on State ownership by managing for appropriate or desired stand structures and species composition based on ecological characteristics such as topography, habitat type, disturbance regimes, and unique characteristics.
- Improve and maintain transportation systems to meet the State of Montana's Best Management Practices (BMPs). Road maintenance, improvements, and reconstruction may be needed on existing roads to improve function and drainage of the haul route. Temporary road construction may also be necessary.

Within the approximately 4,400-acre project area harvest prescription would include, but are not limited to: clear cut, seed tree, shelterwood, group selection, old growth maintenance, overstory removal, commercial thin, and sanitation.

Other management activities such as noxious weed management, pre-commercial thinning, tree planting, mechanical scarification, slash pile burning, and prescribed burning may also occur.

The DNRC is in the scoping phase of the project environmental assessment, so all volumes, acreages and road distances are preliminary estimates. In preparation for this project, specialists such as wildlife biologists, hydrologists, soil scientists, and archeologists will be consulted.

The Montana DNRC invites written comments and suggestions concerning this proposal. Please respond by **June 11, 2026** to:

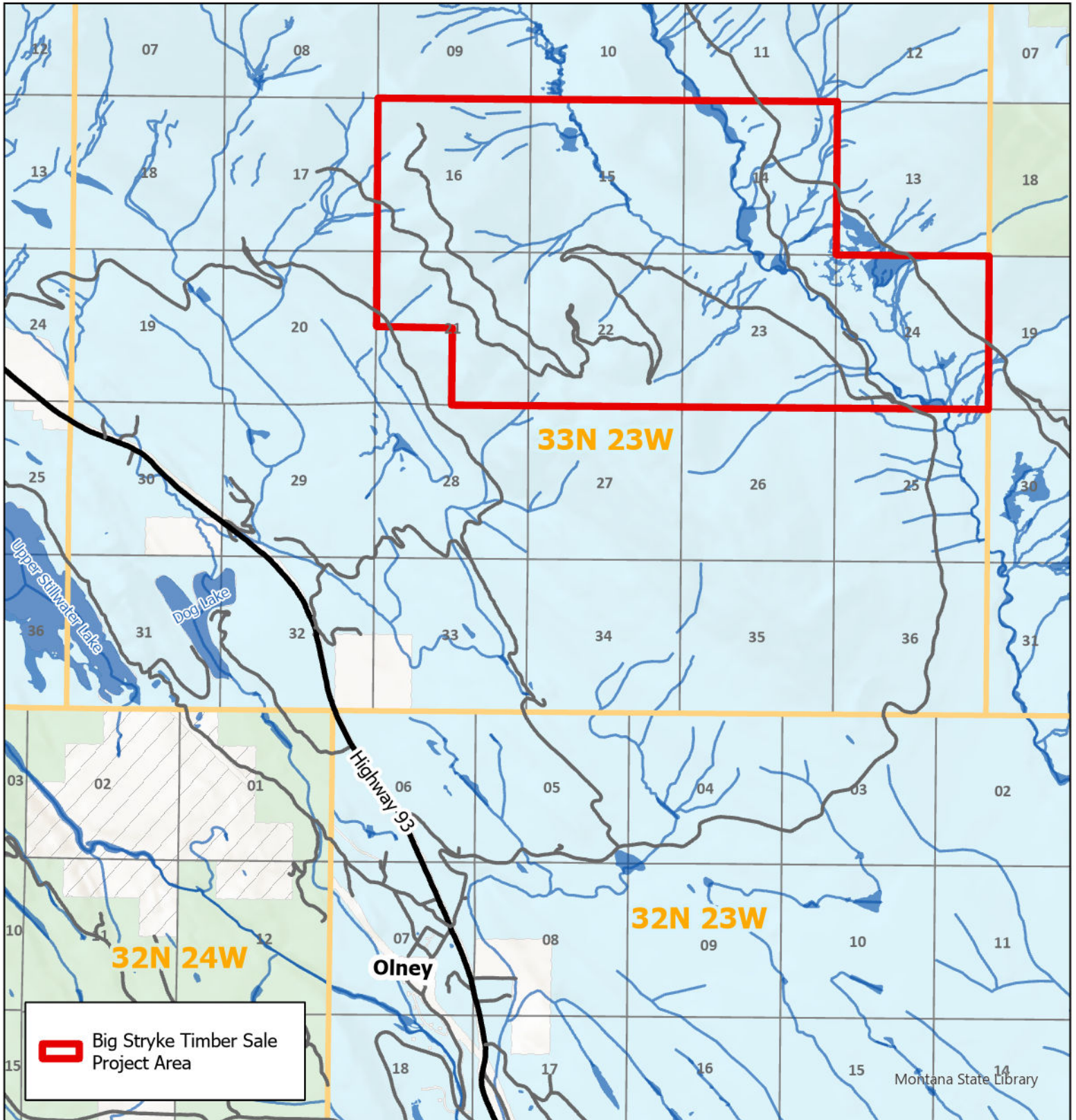
Department of Natural Resources and Conservation
Attn: Sophia Ackerman-Mero
Stillwater Unit
PO Box 164 Olney, MT 59927
Sophia.ackerman-mero@mt.gov
(406)-881-2673



Big Stryke Timber Sale Project

T33N R23W Sections 14, 15, 16, 21, 22, 23 & 24

Scoping Map



May 2026
S. Golden

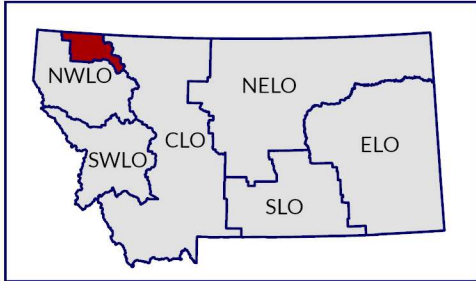
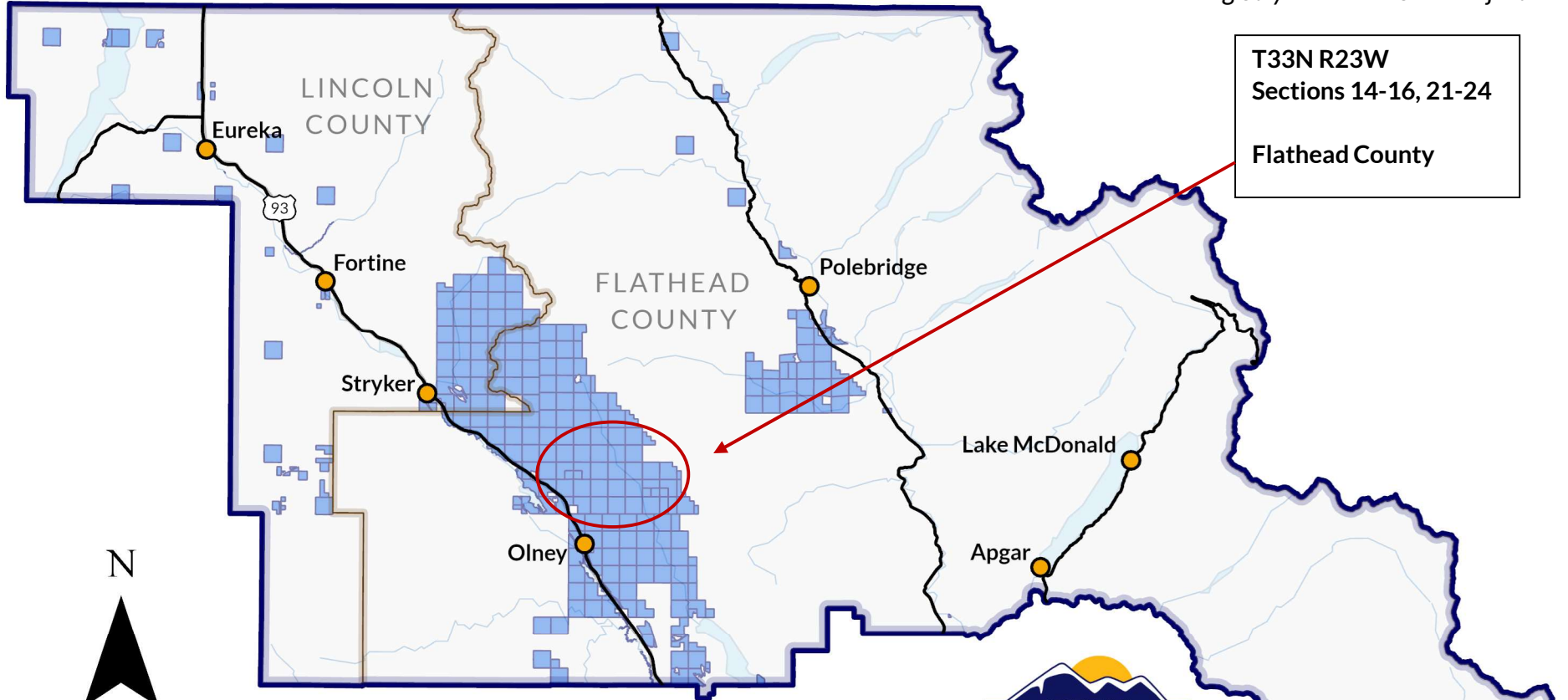


State Trust Land Vicinity Map

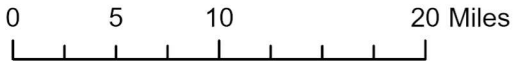
Stillwater Unit

Big Stryke Timber Sale Project

T33N R23W
Sections 14-16, 21-24
Flathead County



- Towns
- County Lines
- Major Roads
- Rivers & Lakes
- State Trust Land



Produced by Montana Department of Natural Resources and Conservation – 2025
NAD 1983 State Plane