

DEPARTMENT OF NATURAL RESOURCES AND CONSERVATION



GREG GIANFORTE, GOVERNOR

1539 ELEVENTH AVENUE

STATE OF MONTANA

DIRECTOR'S OFFICE: (406) 444-2074
FAX: (406) 444-2684

PO BOX 201601
HELENA, MONTANA 59620-1601

October 2024

To Prospective Timber Sale Bidders:

Montana Department of Natural Resources and Conservation (DNRC), Stillwater Unit will be advertising the included sales during the next 6 months. To enable easy access before substantial snowfall, we would like to make the areas available for your assessment. Bid-window dates and harvest volumes are approximate.

There are six sales with various levels of layout on the ground:

(1) Swift Stryke Timber Sale

- Bidding Period: March 2025
- Location: 4 miles east of Olney, MT, accessed via the 4-Mile Road system off Upper Whitefish Road
- Harvest system: 100% tractor
- Prescriptions: commercial thin, sanitation
- Volume: 2.5 MMbf sawtimber
- Species: western larch, Douglas-fir, spruce, lodgepole pine, subalpine fir, grand fir, cedar
- Roadwork: CMP installations, blading & maintenance, temp road construction or adverse skids
- **Special Notes: 165 acres of mandatory winter harvest or CTL harvest**

(2) Lupfer Loop Timber Sale

- Bidding Period: December 2024
- Location: 12 miles north of Whitefish, MT, off Highway 93 and the Lupfer County Road
- Harvest system: 100% tractor
- Prescriptions: seed tree
- Volume: 900 Mbf sawtimber
- Species: Douglas-fir, western larch, spruce, lodgepole pine, subalpine fir, grand fir
- Roadwork: 4.5 miles road maintenance, brushing, drainage improvements, blading
- **Special Notes: March 2025 harvest deadline for units 1 & 2, some hand-felling required, WMZ crossings**

(3) Antice Flats Timber Sale

- Bidding Period: May 2025
- Location: 10 miles northwest of Olney, MT, accessed via Upper Whitefish and Antice Loop roads
- Harvest system: 100% tractor
- Prescriptions: Commercial thin and clear cut
- Volume: 3.5 MMbf sawtimber
- Species: western larch, Douglas-fir, spruce and subalpine fir
- Roadwork: road maintenance, BMP upgrades, improving drainage features
- **Special Notes: mandatory CTL units and/or winter-harvest only**

(4) Rad Dog Timber Sale

- Bidding Period: February 2025
- Location: 3 miles north of Olney, MT
- Harvest system: 100% tractor
- Prescriptions: Commercial thin, shelterwood, seed tree, old-growth maintenance and over-story removal
- Volume: 2.5 MMbf sawtimber
- Species: western larch, Douglas-fir, lodgepole pine, subalpine fir, grand fir, cedar
- Roadwork: brushing, blading, re-routing, optional temp-road construction
- **Special Notes: mandatory CTL units, summer-only harvest units w/in Nordic Trail system**

(5) Taylor to Swift Timber Sale

- Bidding Period: May 2025
- Location: North of Whitefish Lake
- Harvest system: Ground and cable
- Prescriptions: Salvage, old growth maintenance, seed tree and shelterwood
- Volume: 1.5 – 2 MMbf
- Species: Douglas-fir, western larch, subalpine fir, lodgepole pine and spruce
- Roadwork: 24 miles of maintenance, 1.5 miles prism improvement, 2 miles temp. construction
- **Special Notes: Extensive beetle salvage throughout project area, heavy recreation use within project area**

(6) Dog Rock Timber Sale

- Bidding Period: March 2025
- Location: Ewing Road area, 8 miles north of Olney, MT
- Harvest system: 100% tractor
- Prescriptions: Commercial thin, shelterwood, seed tree, and clear cut
- Volume: 2.5 MMbf sawtimber
- Species: Douglas-fir, western larch, spruce, cedar, lodgepole pine and subalpine fir
- Roadwork: brushing, new temp road construction, blading, maintenance and BMP upgrades
- **Special Notes: mandatory CTL and winter harvest units, wet CMP installations**

Additional information and maps will be available at the Stillwater Unit when bid periods are open. If you have inquiries on these projects, please contact 406-881-2668 / sam.bracken@mt.gov. We will be happy to provide you the latest information and connect you with the project forester.

Thank you,

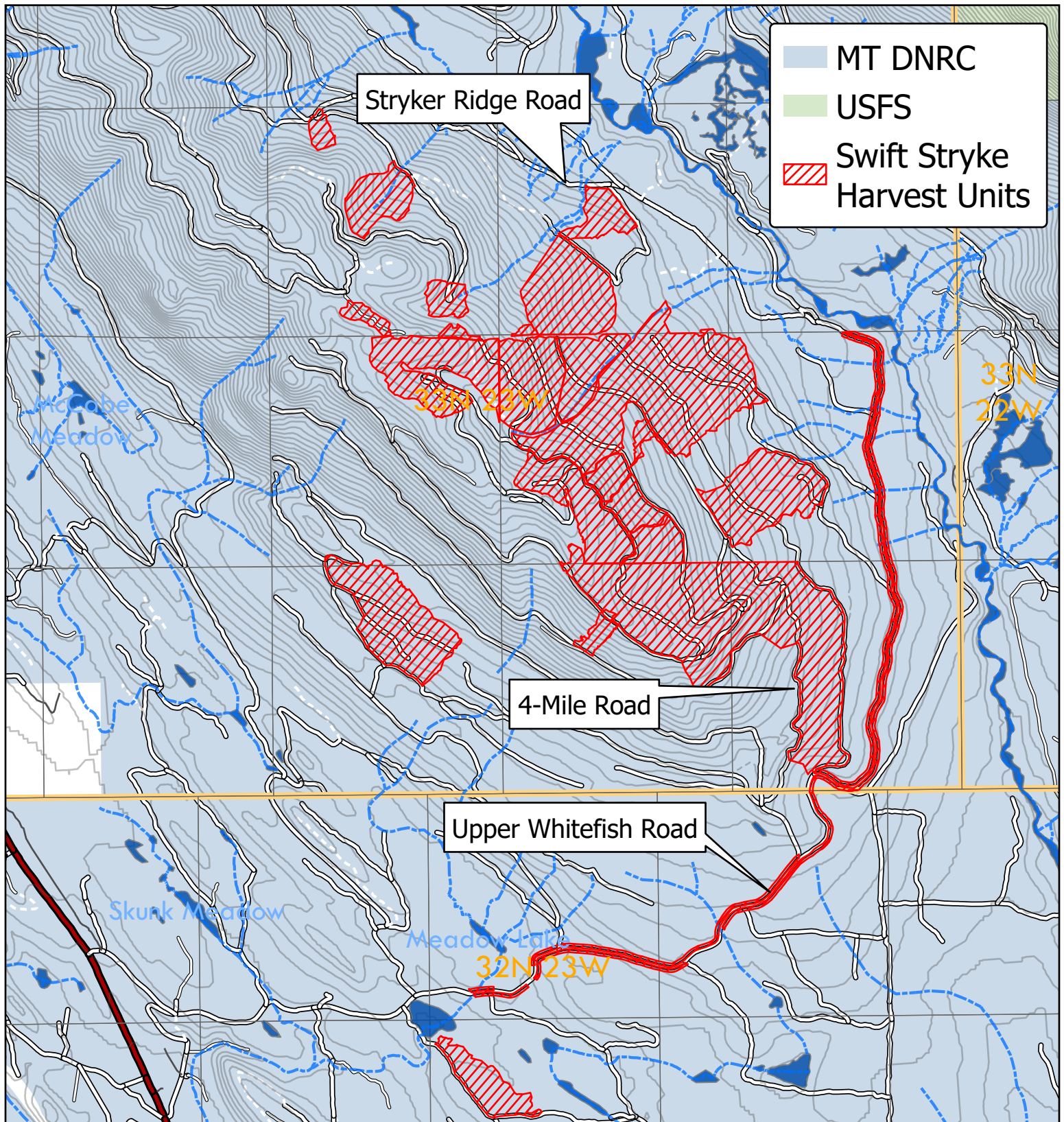
Sam Bracken
Forest Management Supervisor,
Montana DNRC – Stillwater Unit

Encl: Maps – Antice Flats, Dog Rock, Lupfer Loop, Rad Dog, Swift Stryke and Taylor to Swift Timber Sales

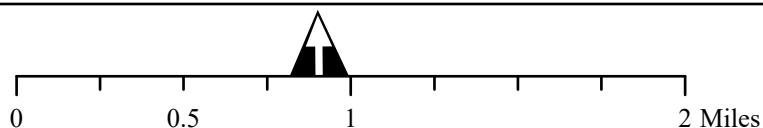
Swift Stryke - 2.5 MMbf - 1300 acres

T33N R23W Sec. 22, 23, 25-27, 34-36

T32N R23W Sec. 3, 4 & 9

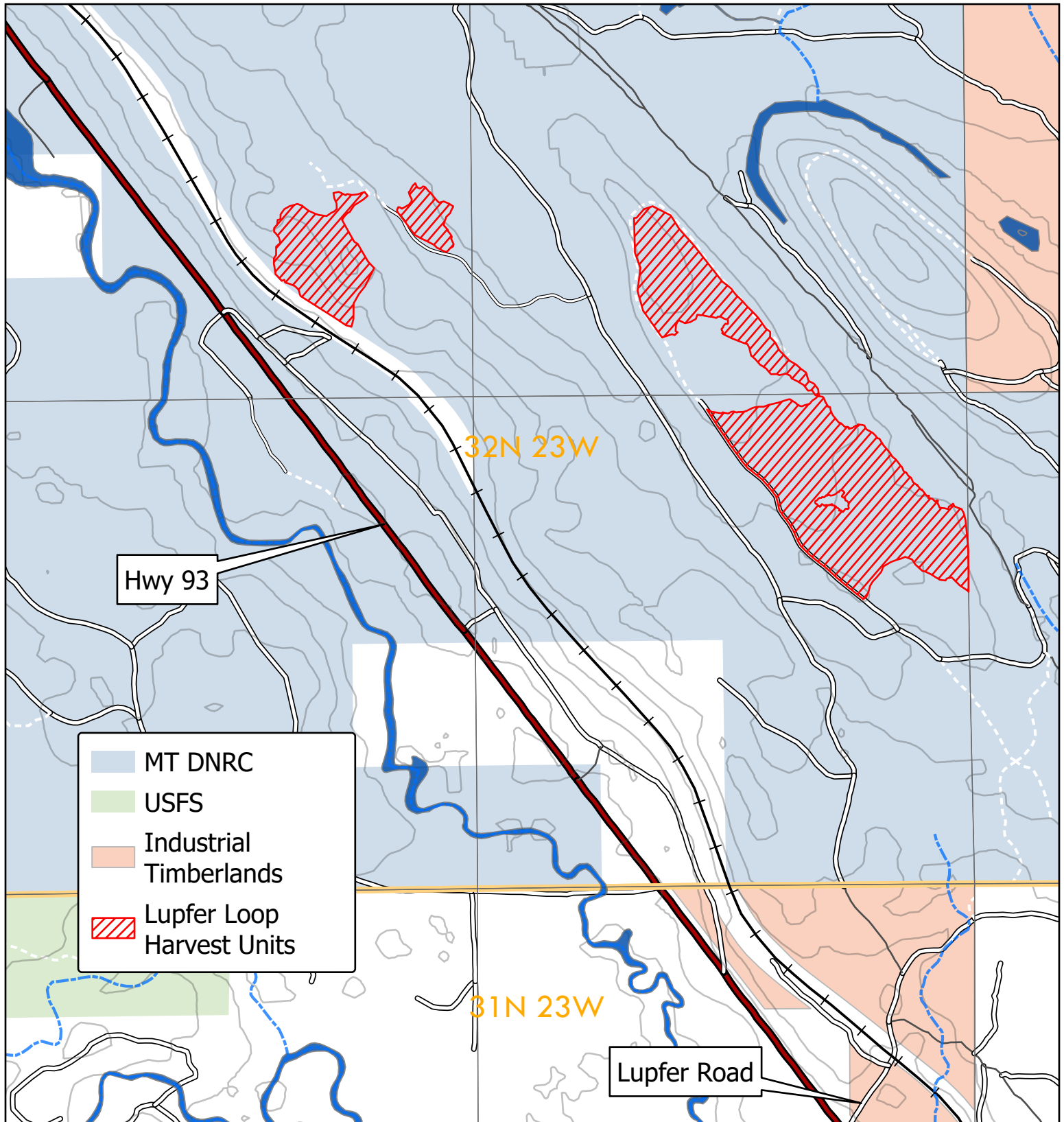


October, 2024
S. Bracken

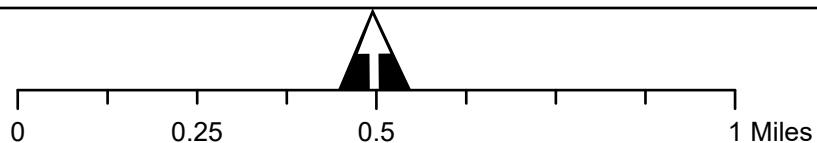


Lupfer Loop - 900 Mbf - 120 acres

T32N R23W Sec. 27, 28 & 34

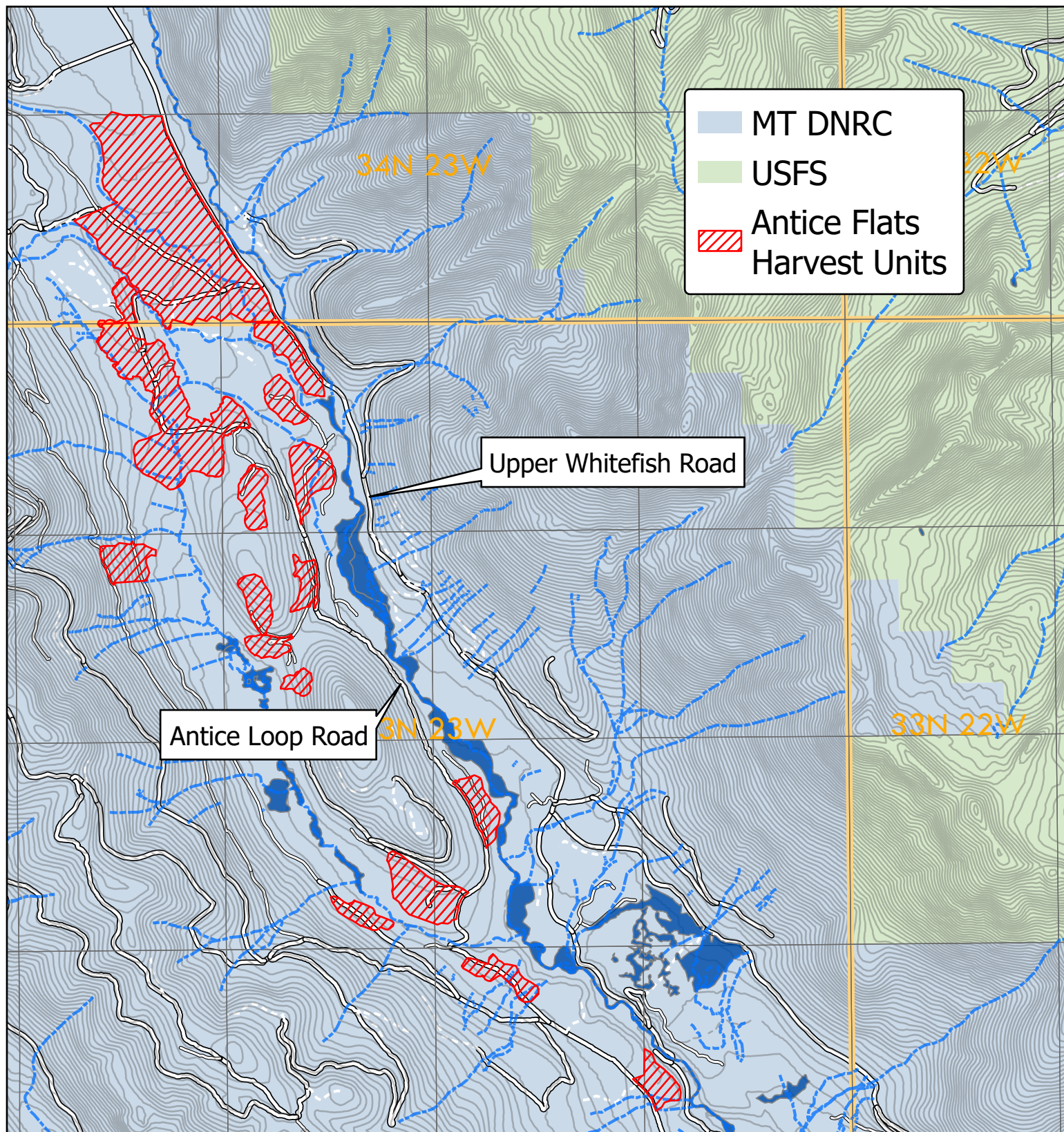


October, 2024
S. Bracken

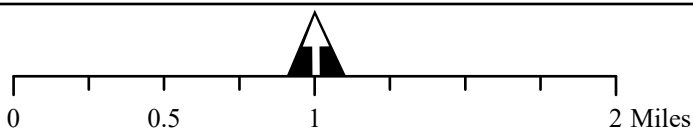


Antice Flats - 3.5 MMbf - 775 acres

T34N R23W Sec. 33 & 34
T32N R23W Sec. 3, 4, 9, 10, 14, 15, 23 & 24

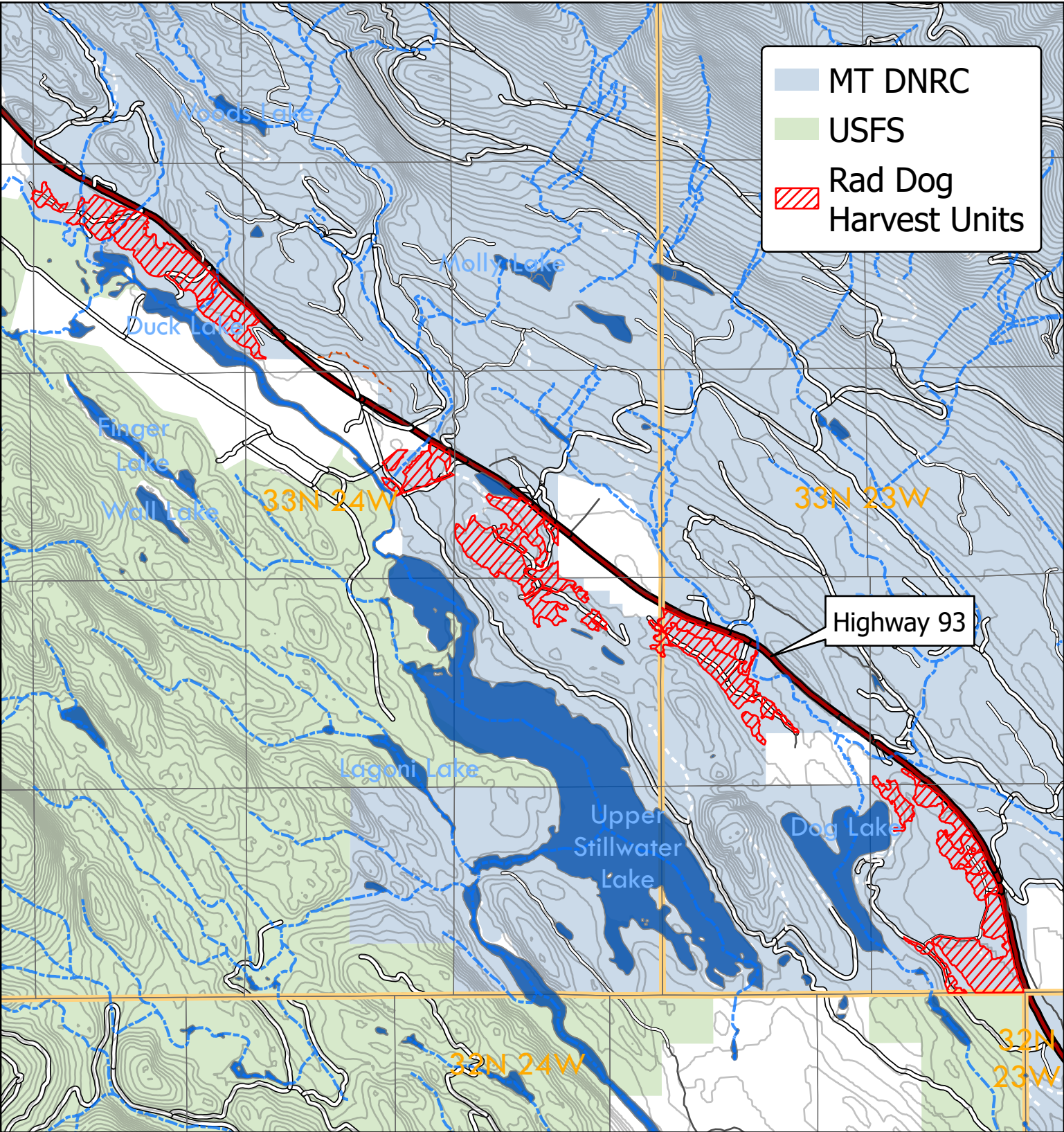


October, 2024
S. Bracken

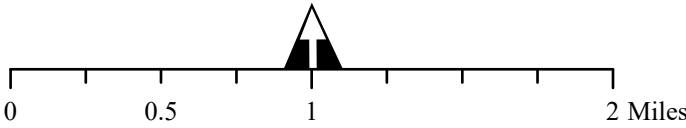


Rad Dog - 2.5 MMbf - 420 acres

T33N R24W Sec. 15, 23-25
T33N R23W Sec. 29, 30 & 32

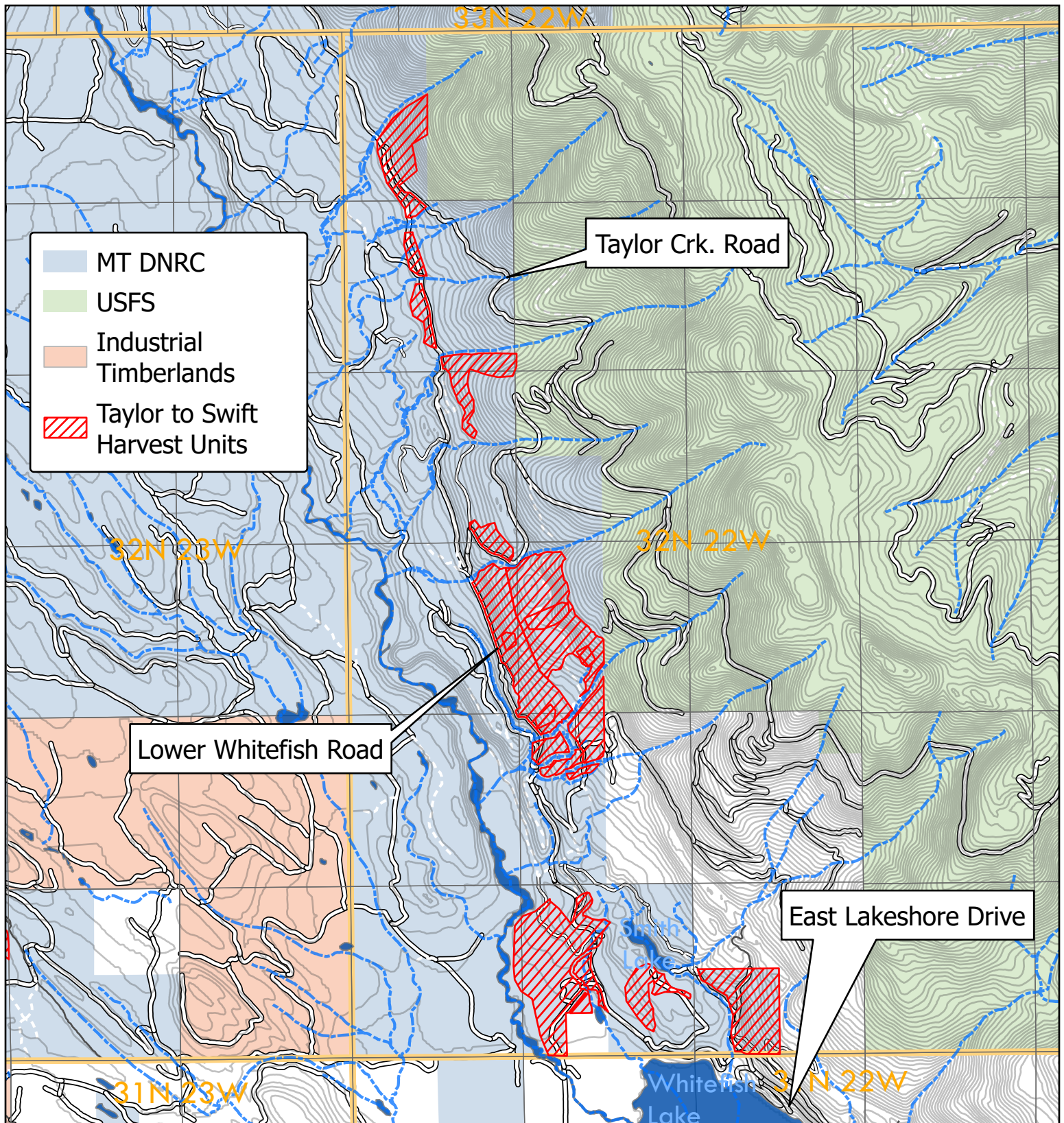


October, 2024
S. Bracken

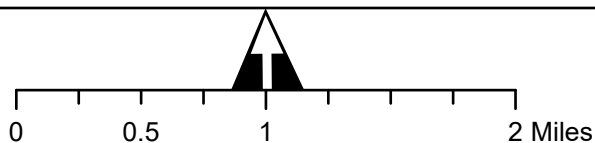


Taylor to Swift - 1.5 MMbf - 745 acres

T32N R22W Sec. 6, 7, 17, 18, 19, 20, 29-33

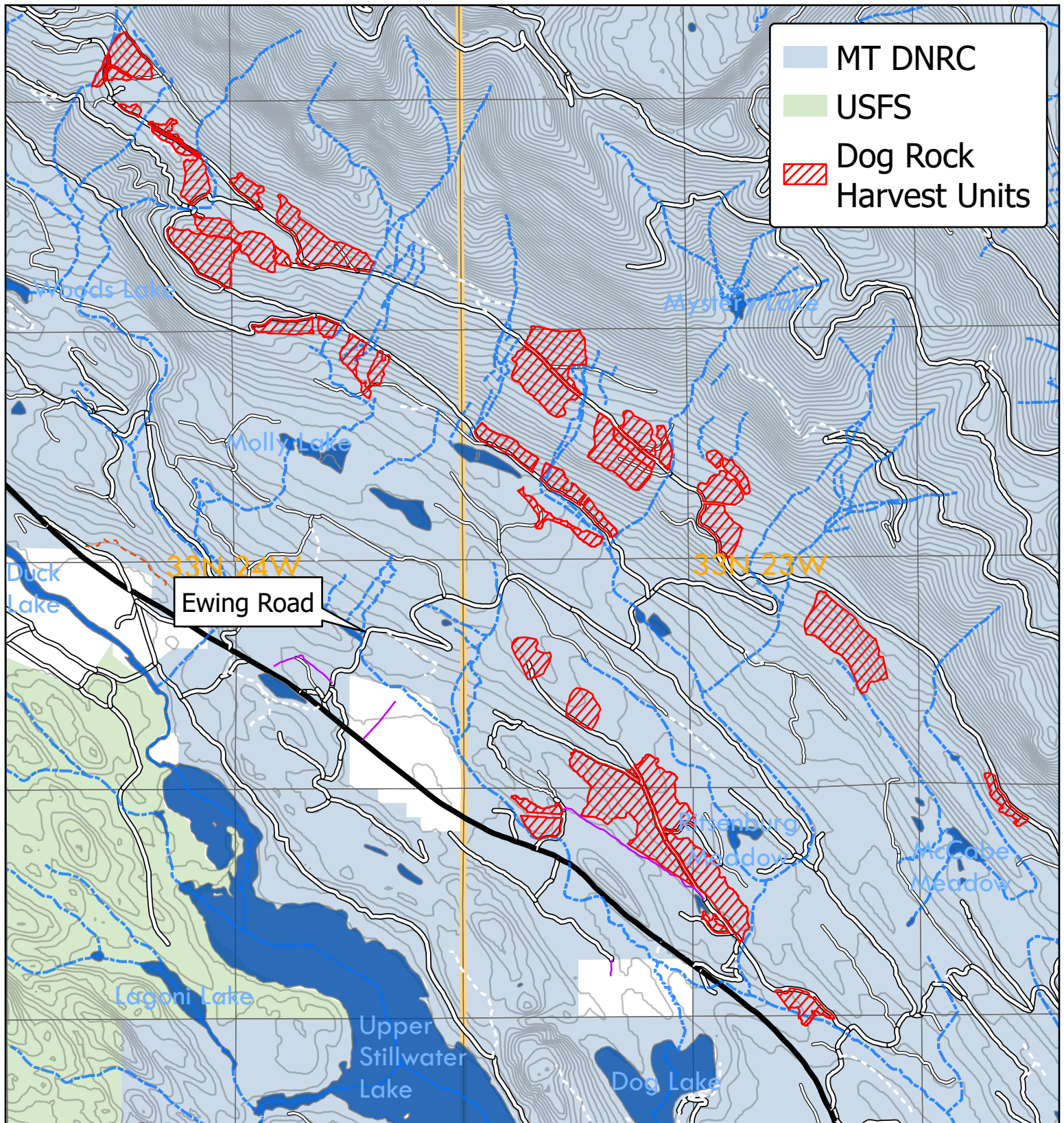


October, 2024
S. Bracken



Dog Rock - 2.5 MMbf - 565 acres

T33N R24W Sec. 2, 11-13
T33N R23W Sec. 17-21, 29, 30 & 32



October, 2024
S. Bracken

