

GOVERNOR GREG GIANFORTE



DNRC DIRECTOR AMANDA KASTER

**Initial Proposal
Stillwater Power Forest Management Project
September 3, 2025**

The Montana Department of Natural Resources and Conservation (DNRC), Stillwater Unit is proposing to harvest timber on the following state-owned parcel:

**T31N R23W S2, 11, 12
T32N R23W S7, 8, 17, 20, 21, 27, 28, 34, 35**

**T33N R24W S24
T33N R23W S29, 30, 32**

The Stillwater Power Forest Management Project is located approximately 2 miles southwest of Olney, MT in Flathead County.

The Primary objectives of the Stillwater Power Forest Management Project are:

- Establish an approximate 300' critical power corridor encompassing the Bonneville Power Administration's (BPA) existing powerline through the Stillwater State Forest. BPA is pursuing a 100' permanent easement for this powerline corridor on state lands.
- Align management activity with the Montana Forest Action Plan objective to harden critical infrastructure.
- Restrict unauthorized motorized use on approximately 16 miles of BPA powerline roads.
- Generate revenue for the Public Buildings, School of Mines, MSU Morrill, State Normal School, School for the Deaf and Blind, and Common Schools trusts.
- Regenerate new timber stands and enhance the vigor of regenerated timber stands.
- Promote biodiversity on State Ownership by managing for appropriate or desired stand structures and species composition based on ecological characteristics such as topography, habitat type, disturbance regimes, and unique characteristics.
- Reduce fire hazard and associated risks of loss to the State of Montana and privately-owned land in the Flathead County wildland urban interface.

The project would harvest approximately 5 - 10 million board feet (MMbf) within a 5,753-acre project area. Harvest prescriptions would vary unit by unit and may include but not limited to: Clear cut, seed tree, shelterwood, commercial thinning, old-growth maintenance and overstory removal. The proposed harvest would contribute to the DNRC's sustained yield as mandated by state statute 77-5-222.

Road maintenance and reconstruction may be needed on existing roads to improve the function and drainage of the haul route. Approximately 1.5 miles of temporary road construction may also be necessary. No permanent roads would be built as part of this project.

Other activities associated with this forest management project may include noxious weed management, pre-commercial thinning, tree planting, mechanical scarification, and slash pile burning.

Forest Management activities may occur on the Lupfer Conservation Easement held by the Flathead Land Trust; all activities would be in line with the Forest and Timber Management plan. Temporary restrictions of the Whitefish Trail Lupfer Trailhead may occur during management activities.

The DNRC is in the scoping phase of the project environmental assessment, so all volumes, acreages and road distances are preliminary estimates. In preparation for this project, specialists such as wildlife biologists, hydrologists, soil scientists, and archeologists will be consulted.

The Montana DNRC invites written comments and suggestions concerning this proposal. Please respond by October 3, 2025 to:

Department of Natural Resources and Conservation
Attn: Joe Rizzi
Stillwater Unit
PO Box 164, Olney, MT 59927
Joseph.Rizzi@mt.gov
(406) 881-2675

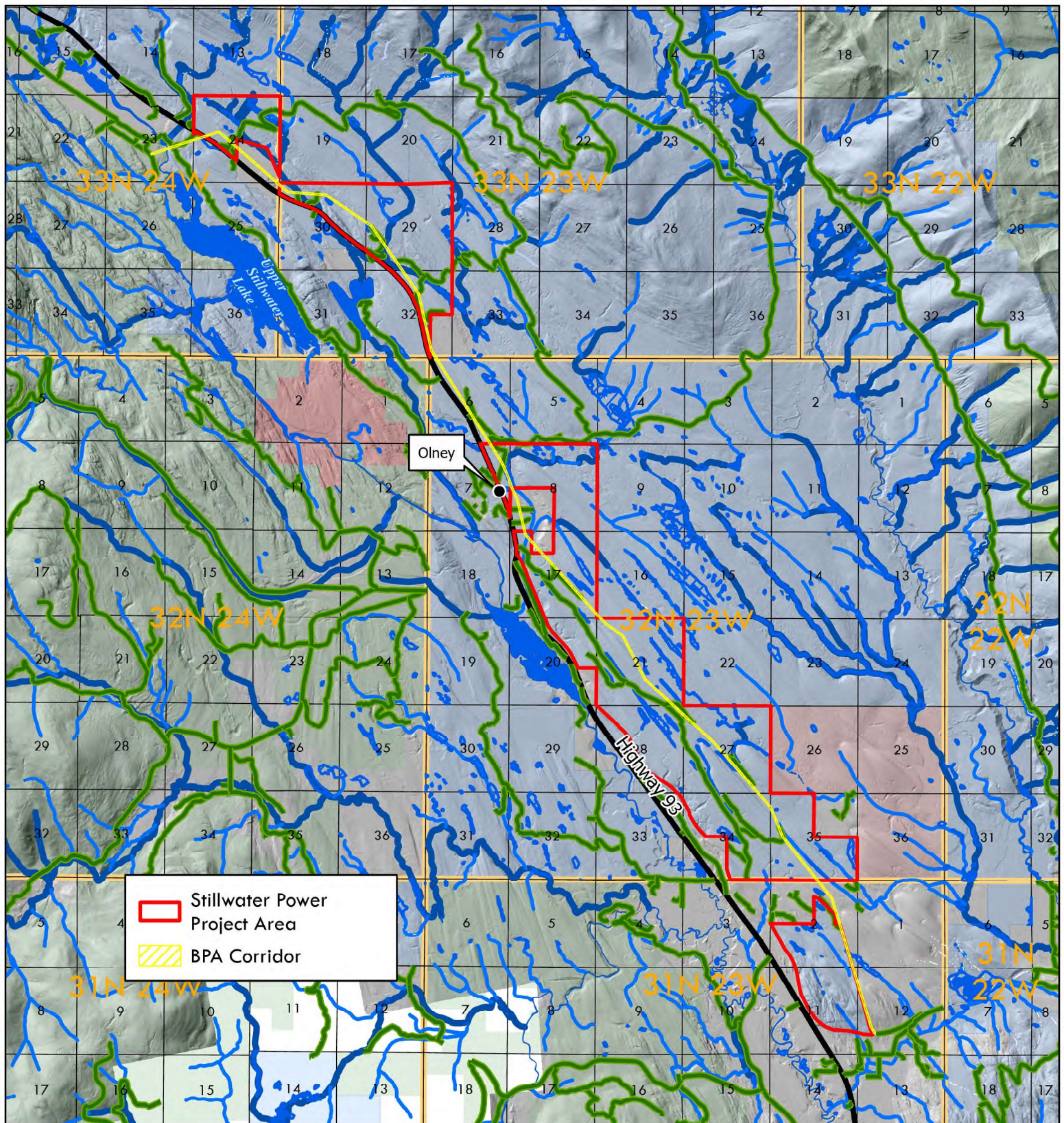


Stillwater Power Forest Management Project

T31N R23W S2, 11, 12
T32N R23W S7, 8, 17, 20, 21, 27, 28, 34, 35

T33N R23W S29, 30, 32
T33N R24W S24

Scoping Map



August 26, 2025



0 0.75 1.5 3 Miles

Joe Rizzi

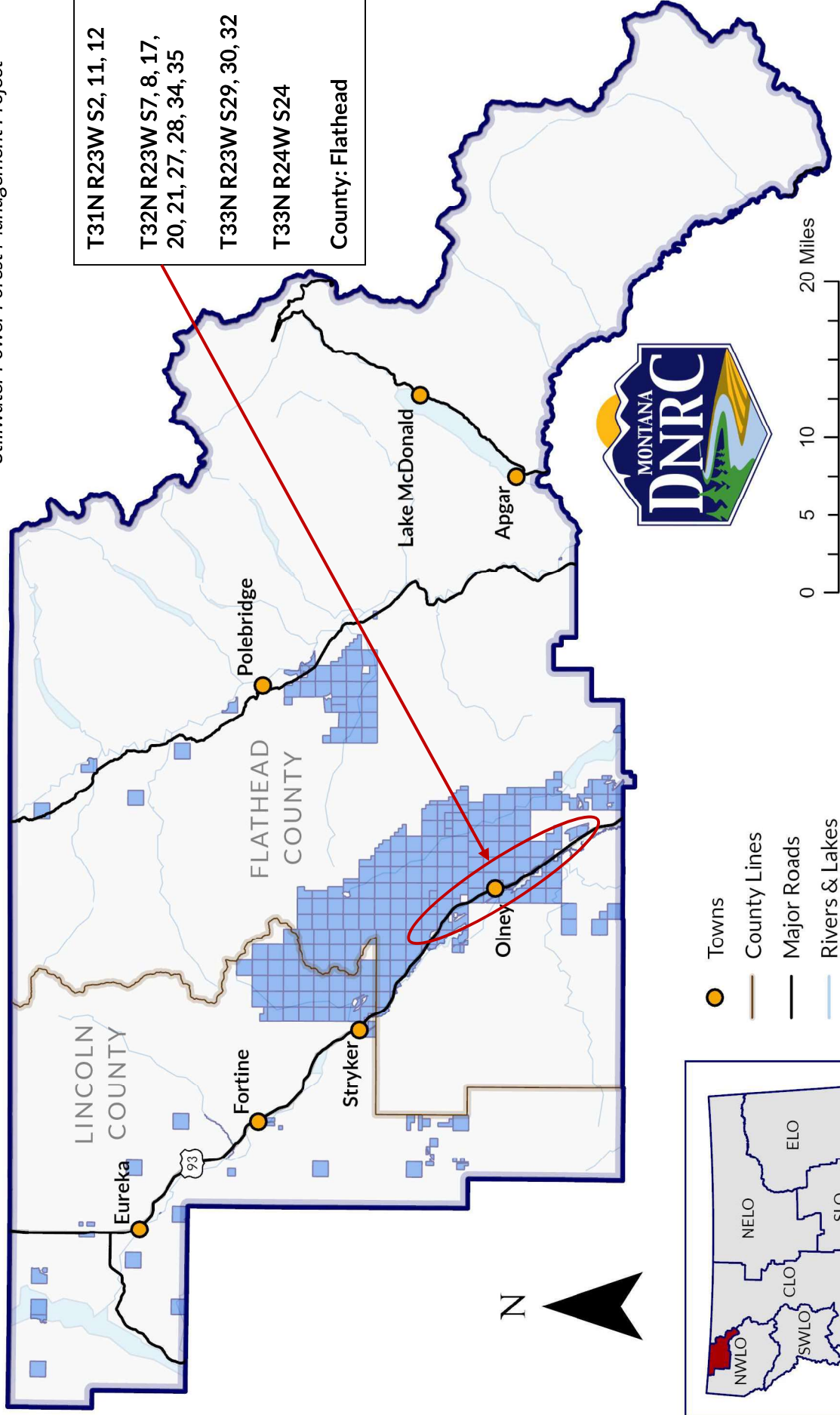


State Trust Land and Vicinity Map

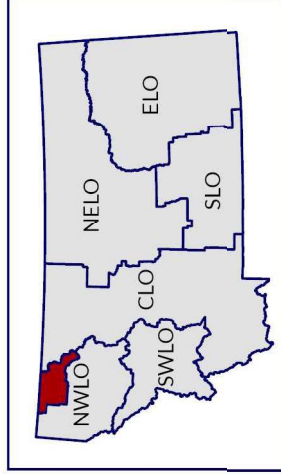
Stillwater Unit

Stillwater Power Forest Management Project

T31N R23W S2, 11, 12
 T32N R23W S7, 8, 17,
 20, 21, 27, 28, 34, 35
 T33N R23W S29, 30, 32
 T33N R24W S24
 County: Flathead



- Towns
- County Lines
- Major Roads
- Rivers & Lakes
- State Trust Land



Produced by Montana Department of Natural Resources and Conservation — 2025
 NAD 1983 State Plane