



**Initial Proposal
Redemption 18 Salvage Permit
9/15/2025**

The Montana Department of Natural Resources and Conservation (DNRC), Libby Unit, is proposing to harvest timber on the following state-owned parcel:

Section 18, Township 29N, Range 27W

The proposed Redemption 18 project is located in the Wolf Creek area, approximately 35 miles from the town of Libby, MT. The proposed harvest would salvage burned timber from the Wolf Syrup Fire from June of 2025.

The primary objectives for this project are:

- Generate revenue for the Public Buildings Trust and capture the value of the burned timber before tree mortality erodes additional value
- Prevent potential tree mortality from the spread of insect damage and disease into currently healthy timber
- Reduce additional fuels and lower the potential risk for another wildfire to occur

The estimated volume for this salvage is 350-550 thousand board feet of timber from approximately 40 acres within the Wolf Syrup Fire area. The proposed harvest would contribute to the DNRC's sustained yield as mandated by state statute 77-5-222.

No new roads will be built for this harvest. Approximately 1-1.5 miles of existing roads will be maintained.

Follow-up treatments could include slash pile burning and tree planting. Harvest activities could begin during 2025.

The DNRC is in the scoping phase of the project environmental assessment, so all volumes, acreages and road distances are preliminary estimates. In preparation for this project, specialists such as wildlife biologists, hydrologists, soil scientists, and archeologists will be consulted.

The Montana DNRC invites written comments and suggestions concerning this proposal. Please respond by **5pm on October 15th, 2025** to:

Department of Natural Resources and Conservation
Attn: **Jessica Mannion**
Libby Unit
177 State Lands Office Rd, Libby, MT 59923
Jessica.mannion@mt.gov
(406)283-3529

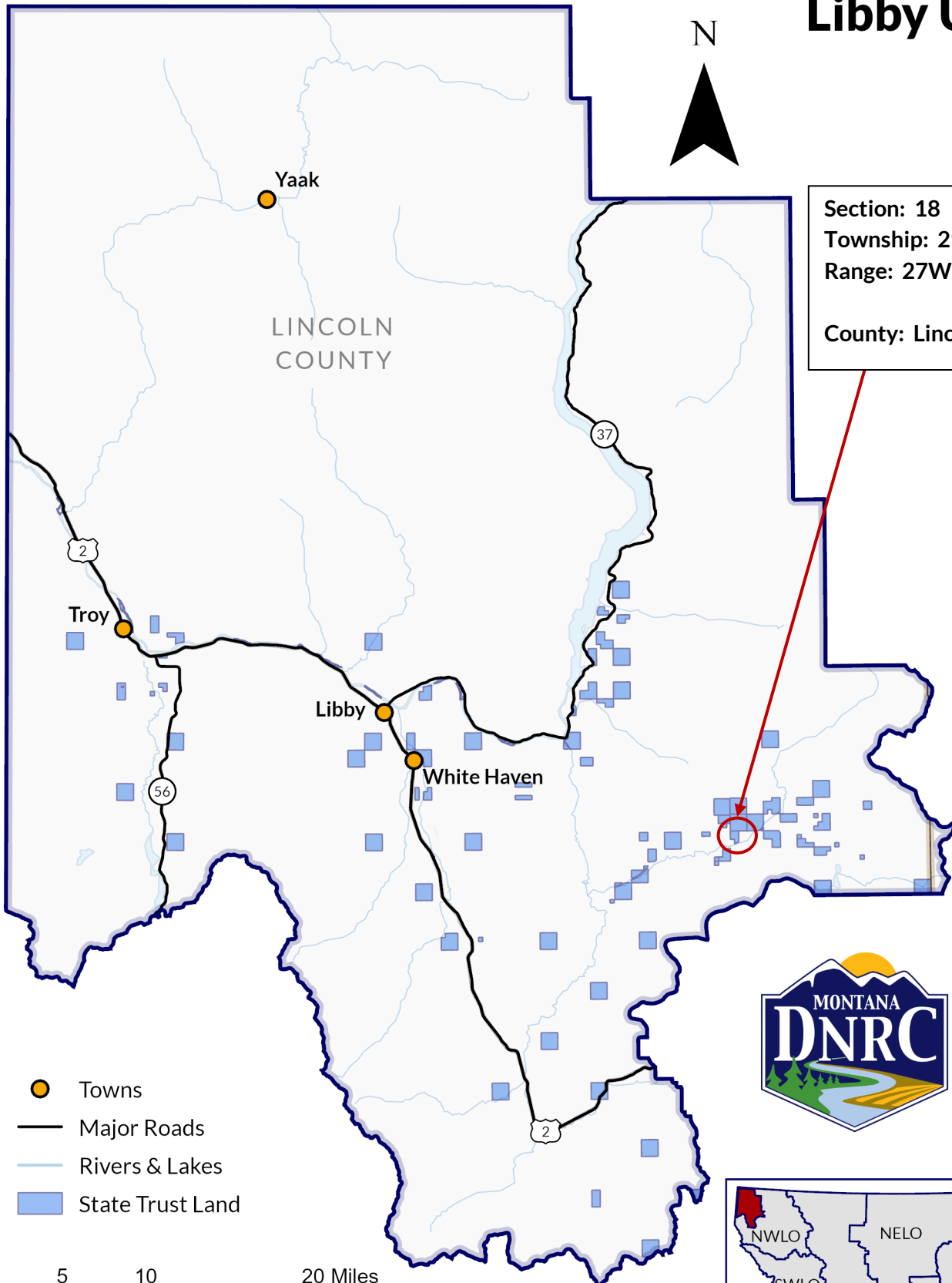


State Trust Land Vicinity Map

Libby Unit



Section: 18
Township: 29N
Range: 27W
County: Lincoln



- Towns
- Major Roads
- Rivers & Lakes
- State Trust Land

0 5 10 20 Miles

Produced by Montana Department of Natural Resources and Conservation – 2025
NAD 1983 State Plane

